



SUPREME AUDIT INSTITUTION OF INDIA
लोकहितार्थं सत्यनिष्ठा
Dedicated to Truth in Public Interest

Finance Accounts (Volume-I) 2024-25



Government of Himachal Pradesh

FINANCE ACCOUNTS

Volume-I

2024-25

GOVERNMENT OF HIMACHAL PRADESH

Table of Contents

Subject	Page(s)
Volume I	
▪ Report of the Comptroller and Auditor General of India	(iii-v)
▪ Guide to the Finance Accounts	(vii-xi)
1. Statement of Financial Position	2-3
2. Statement of Receipts and Disbursements	4-7
Annexure to Statement No.2-A Cash balances and investments of cash balances	
3. Statement of Receipts Consolidated Fund	8-10
4. Statement of Expenditure (Consolidated Fund)	11-16
5. Statement of Progressive Capital Expenditure	17-22
6. Statement of Borrowings and Other Liabilities	23-26
7. Statement of Loans and Advances given by the Government	27-29
8. Statement of Investments of the Government	30
9. Statement of Guarantees given by the Government	31
10. Statement of Grants-in-Aid given by the Government	32-34
11. Statement of Voted and Charged Expenditure	35
12. Statement on Sources and Application of Funds for Expenditure other than on Revenue Account	36-40
13. Summary of balances under Consolidated Fund,Contingency Fund and Public Account	41-43
▪ Notes to Finance Accounts for the year 2024-25	44-62
Volume II	
Part I- Detailed Statements	
14. Detailed Statement of Revenue and Capital Receipts by Minor Heads	64-98
15. Detailed Statement of Revenue Expenditure by Minor Heads	99-157
16. Detailed Statement of Capital Expenditure by Minor Heads and Sub Heads	158-233
17. Detailed Statement of Borrowings and Other Liabilities	234-247
18. Detailed Statement of Loans and Advances given by the State Government	248-255
19. Detailed Statement of Investments	256-272
20. Detailed Statement of Guarantees given by the Government	273-274
21. Detailed Statement on Contingency Fund and Other Public Account transactions	275-284
22. Detailed Statement on Investment of Earmarked Funds	285

Table of Contents

Subject	Page(s)
Volume II	
Part II: Appendices	
I. Comparative Expenditure on Salary	287-296
II. Comparative Expenditure on Subsidy	297-305
III. Grants-in-Aid given by the State Government (Institution wise and Scheme wise)	306-326
IV. Details of Externally Aided Projects	327-328
V. Expenditure on Schemes	329-335
A-Central Schemes (Centrally Sponsored Schemes and Central Schemes)	
B-States Schemes	
VI. Direct transfer of Central Scheme funds to Implementing Agencies in the State (Funds routed outside the State Budget) (Unaudited Figures)	336-339
VII. Acceptance and Reconciliation of Balances	340
VIII. Financial results of Irrigation Works	341
IX. Statement of Commitments-List of Incomplete Capital Works	342-347
X. Maintenance Expenditure with Segregation of Salary and non-salary portion	348-354
XI. Major Policy decisions during the year or New Schemes Proposed in the Budget	355
XII. Statement on Committed Liabilities of the State in future	356

Report of the Comptroller and Auditor General of India
Audit of the Finance Accounts of the Government of Himachal Pradesh

Opinion

The Finance Accounts of the Government of Himachal Pradesh for the year ended 31 March 2025, present the financial position along with accounts of the receipts and disbursements of the Government for the year involving transactions from and/or to the Consolidated Fund, the Contingency Fund and the Public Account of the State. The compilation of Finance Accounts comprises two Volumes; Volume-I contains the consolidated position of the state of finances and explanatory 'Notes to Finance Accounts' including a summary of Significant Accounting Policies. Volume-II depicts the accounts in detail. The Appropriation Accounts of the Government for the year for Grants and Charged Appropriations, which represent the budget comparison, are presented separately.

On the basis of the information and explanations that my officers required and have obtained and as a result of test audit of the accounts, in my opinion, the Finance Accounts read with the explanatory 'Notes to Finance Accounts' present fairly the financial position and the receipts and disbursements of the Government of Himachal Pradesh for the year 2024-25.

Observations arising from audit of these accounts as well as audit conducted during the year or earlier years are contained in my Financial, Compliance and Performance Audit Reports on the Government of Himachal Pradesh being presented separately for the year ended 31 March 2025.

Basis for Opinion

The conduct of audit is in accordance with the CAG's Auditing Standards. These Standards require that we plan and perform audits to obtain reasonable assurance that the accounts are free from material misstatement. An audit includes examination, on a test basis, of evidence relevant to the amounts and disclosures in the financial statements. The audit evidence that we have obtained provides a basis for my opinion.

Responsibilities for Preparation of the Initial and Subsidiary Accounts

The State Government is responsible for obtaining authorisation of budget from the State Legislature. The State Government and those responsible for execution of budget such as treasuries, offices and departments of the Government of Himachal Pradesh are responsible for preparation and correctness of the initial and subsidiary accounts as well as for ensuring the regularity of transactions in accordance with the applicable laws, standards, rules and regulations.

Also, they are responsible for rendering the initial and subsidiary accounts and information related thereto to the Office of the Principal Accountant General (Accounts and Entitlements) of Himachal Pradesh for compilation and preparation of the Finance Accounts.

Responsibilities for Compilation of Annual Accounts

The Office of the Principal Accountant General (Accounts and Entitlements) of Himachal Pradesh functioning under my control is responsible for compilation and preparation of Annual Accounts of the State Government. This is in accordance with the requirements of the Comptroller and Auditor General's (Duties, Powers and Conditions of Service) Act, 1971.

The Annual Accounts have been compiled from the vouchers, challans and initial and subsidiary accounts as received from the treasuries, offices and departments of the Government of Himachal Pradesh and the statements received from the Reserve Bank of India.

Statements (8, 9, 19 & 20) and Appendices (IV, VI, VIII, IX, XI and XII) in this compilation have been prepared directly from the information received from the Government of Himachal Pradesh and the Union Government who are responsible for such information.

Responsibilities for the Audit of the Annual Accounts

The audit of the Annual Accounts is conducted through the Office of the Principal Accountant General (Audit) in accordance with the requirements of Articles 149 and 151 of the Constitution of India and the Comptroller and Auditor General's (Duties, Powers and Conditions of Service) Act, 1971 for expressing an opinion on these Accounts based on the results of such audit.

The Office of the Principal Accountant General (Audit) and the Office of the Principal Accountant General (Accounts and Entitlements) are independent organisations with distinct cadres, separate reporting lines and management structure.



(K. SANJAY MURTHY)

Comptroller and Auditor General of India

Date: 24 December 2025
Place: New Delhi

A. Broad overview of the structure of Government accounts

1. The Finance Accounts of the State of Himachal Pradesh present the accounts of receipts and outgoings of the Government for the year, together with the financial results disclosed by the Revenue and Capital accounts, the accounts of the Public Debt and the Liabilities and Assets of the State Government as worked out from the balances recorded in the accounts. The Finance Accounts are accompanied by Appropriation Accounts, which present comparison of expenditure against the Grants/ Appropriations.

2. The Accounts of the Government are kept in the following three parts:

Part I: Consolidated Fund: This Fund comprises all revenues received by the State Government, all loans raised by the State Government (Market Loans, Bonds, Loans from the Central Government, Loans from Financial Institutions, Special Securities issued to National Small Savings Fund, etc.), Ways and Means Advances (WMA) extended by the Reserve Bank of India (RBI) and all moneys received by the State Government in repayment of loans. No moneys can be appropriated from this fund, except in accordance with law and for the purposes and in the manner provided by the Constitution of India. Certain categories of expenditure (e.g., salaries of constitutional authorities, loan repayments etc.), constitute a charge on the Consolidated Fund of the State (Charged expenditure) and are not subject to vote by the Legislature. All other expenditure (Voted Expenditure) is voted by the Legislature.

The Consolidated Fund comprises two sections: Revenue and Capital (including Public Debt, Loans and Advances). These are further categorised under 'Receipts' and 'Expenditure'. The Revenue Receipts section is divided into three sectors, viz., 'Tax Revenue', 'Non Tax Revenue' and 'Grants-in-Aid and Contributions'. These three sectors are further divided into sub-sectors like 'Goods and Services Tax', 'Taxes on Income and Expenditure', 'Fiscal Services', etc. The Capital Receipts section does not contain any sectors or sub-sectors. The Revenue Expenditure section is divided into four sectors, viz., 'General Services', 'Social Services', 'Economic Services' and 'Grants-in-Aid and Contributions'. These sectors in the Revenue Expenditure section are further divided into sub-sectors like, 'Organs of State', 'Education, Sports, Art and Culture' etc. The Capital Expenditure section is sub-divided into seven sectors, viz., 'General Services', 'Social Services', 'Economic Services', 'Public Debt', 'Loans and Advances', 'Inter-State Settlement' and 'Transfer to Contingency Fund'.

Part II: Contingency Fund: This Fund is in the nature of an imprest which is established by the State Legislature by law, and is placed at the disposal of the Governor to enable advances to be made for meeting unforeseen expenditure pending authorisation of such expenditure by the State Legislature. The fund is recouped by debiting the expenditure to the concerned functional major head relating to the Consolidated Fund of the State. The Contingency Fund of the Government of Himachal Pradesh for 2024-25 is ₹ 5.00 crore.

Part III: Public Account: All other public moneys received by or on behalf of the Government, where the Government acts as a banker or trustee, are credited to the Public Account. The Public Account includes repayable such as Small Savings and Provident Funds, Deposits (bearing interest and not bearing interest), Advances, Reserve Funds (bearing interest and not bearing interest), Remittances and Suspense heads (both of which are transitory heads, pending final booking). The net cash balance available with the Government is also included under the Public Account. The Public Account comprises six sectors, viz., 'Small Savings, Provident Funds, etc.', 'Reserve Funds', 'Deposit and Advances', 'Suspense and Miscellaneous', 'Remittances', and 'Cash Balance'. These sectors are further sub-divided into sub-sectors. The Public Account is not subject to the vote of the Legislature.

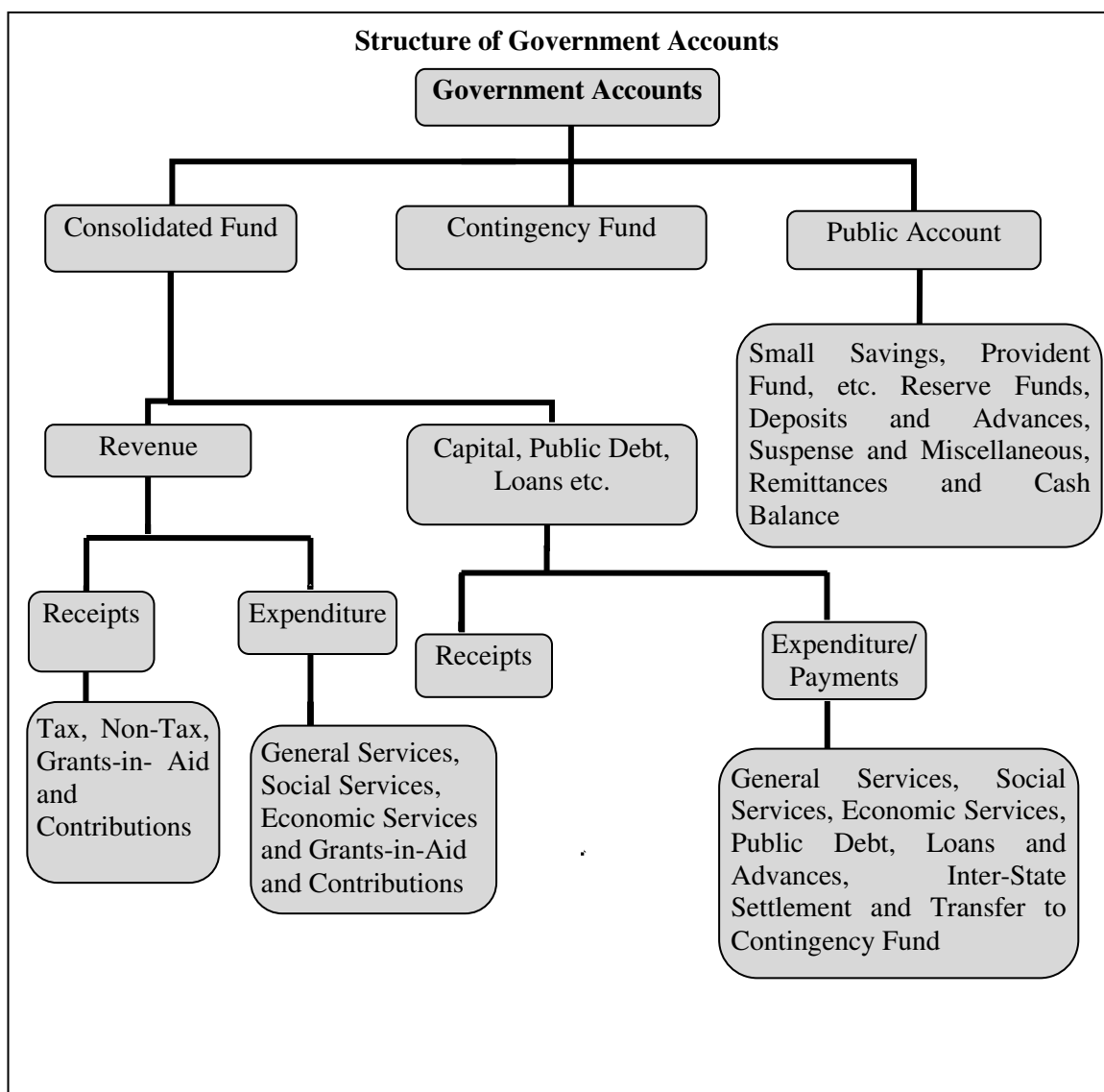
3. Government accounts are presented under a six tier classification, viz., Major Heads (four digits), Sub-Major Heads (two digits), Minor Heads (three digits), Sub-Heads (two

digits), Detailed Heads (two to three digits), and Object Heads (two/three/four digits). Major Heads represent functions of Government, Sub- Major Heads represent sub-functions, Minor Heads represent programme/ activities, Sub-Heads represent schemes, Detailed Heads represent sub-schemes, and Object Heads represent purpose/object of expenditure.

4. The main unit of classification in accounts is the Major Head which contains the following coding pattern (according to the List of Major and Minor Heads corrected up to 31 March 2025)

0005 to 1606	Revenue Receipts
2011 to 3606	Revenue Expenditure
4000	Capital Receipts
4016 to 7810	Capital Expenditure (including Public Debt, Loans and Advances)
7999	Appropriation to the Contingency Fund
8000	Contingency Fund
8001 to 8999	Public Account

5. A pictorial representation of the structure of accounts is given below:



B. What the Finance Accounts contain

The Finance Accounts are presented in two volumes.

Volume I contains the Certificate of the Comptroller and Auditor General of India, the Guide to the Finance Accounts, 13 Statements which gives summarised information on the financial position and transactions of the State Government for the current financial year and Notes to Finance Accounts. Description of 13 Statements and Notes to Finance Accounts in **Volume I** are given below:

- 1. Statement of Financial Position:** This statement depicts the cumulative figures of assets and liabilities of the State Government, as they stand at the end of the year, and as compared to the position at the end of the previous year.
- 2. Statement of Receipts and Disbursements:** This statement depicts all receipts and disbursements of the State Government during the year in all the three parts in which Government accounts are kept, viz., the Consolidated Fund, Contingency Fund and Public Account. In addition, it contains an annexure, showing alternative depiction of Cash Balances (including investments) of the Government. The Annexure also depicts the Ways and Means position of the Government in detail.
- 3. Statement of Receipts (Consolidated Fund):** This statement comprises Revenue and Capital Receipts, Borrowings and Repayments of the Loans given by the State Government. This statement corresponds to Detailed Statements 14,17 and 18 in Volume II of the Finance Accounts.
- 4. Statement of Expenditure (Consolidated Fund):** In departure from the general depiction of the Finance Accounts up to the Minor Head level, this statement gives details of expenditure by nature of activity (objects of expenditure) also. This statement corresponds to Detailed Statement 15,16,17 and 18 in Volume II.
- 5. Statement of Progressive Capital Expenditure.** This statement corresponds to the Detailed Statement 16 in Volume II.
- 6. Statement of Borrowings and Other Liabilities:** Borrowings of the Government comprise Market Loans raised by it (Internal Debt) and Loans and Advances received from the Government of India. 'Other Liabilities' comprise 'Small Savings, Provident Funds etc.', 'Reserve Funds' and 'Deposits'. The statement also contains a note on service of debt and corresponds to the Detailed Statement 17 in Volume II.
- 7. Statement of Loans and Advances given by the Government:** This statement depicts all Loans and Advances given by the State Government to various categories of loanees like Statutory Corporations, Government Companies, Autonomous and Other Bodies/ Authorities and recipient individuals (including Government servants). This statement corresponds to the Detailed Statement 18 in Volume II.
- 8. Statement of Investments of the Government:** This statement depicts investments of the State Government in the equity capital of Statutory Corporations, Government Companies, other Joint Stock Companies, Cooperative institutions and Local Bodies. This statement corresponds to Detailed Statement 19 in Volume-II.
- 9. Statement of Guarantees given by the Government:** This statement summarises the guarantees given by the State Government on repayment of principal and interest on loans raised by Statutory Corporations, Government Companies, Local Bodies and Other institutions. This statement corresponds to Detailed Statement 20 in Volume-II.
- 10. Statement of Grants-in-aid given by the Government:** This statement depicts all Grants-in-aid given by the State Government to various categories of grantees, like, Statutory Corporations, Government Companies, Autonomous and Other Bodies/ Authorities and individuals. Appendix III provides details of the recipient institutions.
- 11. Statement of Voted and Charged Expenditure:** This statement assists in the agreement of the net figures appearing in the Finance Accounts with the gross figures appearing in the Appropriation Accounts.
- 12. Statement on Sources and Application of Funds for Expenditure other than on Revenue Account:** This statement is based on the principle that revenue expenditure is expected to be defrayed from Revenue Receipts, while Capital Expenditure of the year

is met from Revenue Surplus, net credit balances in the Public Account, Cash Balance at the beginning of the year, and Borrowings.

- 13. Summary of Balances under Consolidated Fund, Contingency Fund and Public Account:** This statement assists in establishing the accuracy of the accounts. This statement corresponds to the Detailed Statements 14, 15, 16, 17, 18 and 21 in Volume II.

Notes to Finance Accounts and Significant Accounting Policies

Notes to Finance Accounts provide disclosures and explanatory notes, which are intended to provide additional information/explanation relevant to the transactions, classes of transactions, balances, etc., which shall be helpful to the stakeholders/users of the Finance Accounts.

Significant Accounting Policies, including basis of Budget and Financial reporting, requirements of Indian Government Accounting Standards (IGASs), form of accounts, classification between Capital and Revenue Expenditure, rounding off, periodical adjustments, etc., are included as part of the Notes to Finance Accounts in Volume I of the Finance Accounts.

Volume II of the Finance Accounts contains two parts-nine Detailed Statements in Part I and 12 Appendices in Part II.

Part I of Volume II

- 14. Detailed Statement of Revenue and Capital Receipts by Minor Heads:** This statement corresponds to the Summary Statement 3 in Volume 1 of the Finance Accounts. In addition to representing details of Revenue Receipt at Minor Head level, this statement depicts details at Sub Head level in respect of Grant-in-aid from Central Government.
- 15. Detailed Statement of Revenue Expenditure by Minor Heads:** This statement, which corresponds to the Summary Statement 4 in Volume I, depicts the Revenue Expenditure of the State Government. Charged and Voted expenditure are exhibited distinctly.
- 16. Detailed Statement of Capital Expenditure by Minor Heads and Sub Heads:** This statement, which corresponds to the Summary Statement 5 in Volume-I, depicts the Capital Expenditure (during the year and cumulatively) of the State Government. Charged and Voted expenditure are exhibited distinctly. In addition to representing details of Capital Expenditure at Minor Head level, in respect of significant schemes, this statement depicts details at Sub head level also.
- 17. Detailed Statement of Borrowings and Other Liabilities:** This statement, which corresponds to the Summary Statement 6 in Volume I, contains details of all loans raised by the State Government (Market Loans, Bonds, Loans from the Central Government, Loans from Financial Institutions, Special Securities issued to National Small Savings Fund, etc.), and Ways and Means advances extended by the Reserve Bank of India. This statement presents the information on loans under three categories: (a) details of individual loans; (b) maturity profile, i.e., amounts payable in respect of each category of loans in different years; (c) interest rate profile of outstanding loans and annexure depicting Market Loans.
- 18. Detailed Statement of Loans and Advances given by the Government:** This statement corresponds to the Summary Statement 7 of Volume I.
- 19. Detailed Statement of Investments of the Government:** This statement depicts details of investments entity wise and Major and Minor Head wise details of Investments during the year, where there is a difference between Statements 16 and 19. This statement corresponds to Statement 8 in Volume I.
- 20. Detailed Statement of Guarantees given by the Government:** This statement depicts entity wise details of Government Guarantees. This statement corresponds to Statement 9 in Volume I.

- 21. Detailed Statement of Contingency Fund and Public Account Transactions:** This statement depicts at Minor Head level the details of un-recouped amounts under Contingency Fund, consolidated position of Public Accounts transactions during the year, and outstanding balances at the end of the year.
- 22. Detailed Statement of Investments of Earmarked Balances:** This statement depicts details of Investment from the Reserve Funds and Deposits (Public Account).

Part II of Volume II

Part II Contains 12 Appendices on various items including Salaries, Subsidies, Grants-in-aid, Externally Aided Projects, etc. These details are presented in the accounts at Sub-Head level or below (i.e. below Minor Head levels) and so are not generally depicted in the Finance Accounts. A detailed list of appendices appears at the 'Table of Contents' in Volume I and II. The statements and Notes to Finance Accounts read with the appendices present the financial position along with accounts of the receipts and disbursements of the Government for the year.

C. Ready Reckoner:

The section below links the summary statements appearing in Volume I with the detailed statements and appendices in Volume II (Appendices which do not have a direct link with the Summary Statements are not shown below).

Parameter	Volume I	Volume II	
	Summary Statements	Detailed Statements	Appendices
Revenue Receipts (including Grants received), Capital Receipts	2, 3	14	
Revenue Expenditure	2, 4	15	I (Salary), II (Subsidy)
Grants-in-Aid given by the Government	2,10	...	III (Grants-in-aid)
Capital Expenditure	1, 2, 4,5,12	16	I (Salary)
Loans and Advances given by the Government	1, 2, 7	18	
Debt Position/Borrowings	1, 2, 6	17	
Investments of the Government in Companies, Corporations etc	8	19	
Cash	1, 2,12,13	...	
Balances in Public Account and investments there of	1, 2,12,13	21, 22	
Guarantees	9	20	
Schemes			IV (Externally Aided Projects)

Volume-I

1. STATEMENT OF FINANCIAL POSITION

(₹ in crore)

Assets ^(a)	Reference (Sl. No.)		As on 31 st March 2025	As on 31 st March 2024
	Notes to Finance Account	Statement/ Appendix		
Cash			44.93	1,500.44
(i) Cash in Treasuries and Local Remittances	Nil	Annx. to Statement No 2
(ii) Departmental Balances	Nil	21	0.16	0.16
(iii) Permanent Cash Imprest	Nil	21	0.03	0.03
(iv) Cash Balance Investments	Nil	21	...	1,457.81
(v) Deposits with Reserve Bank of India (If credit balance include herewith minus sign)	Nil	Annx. to Statement No 2	44.74	42.44
(vi) Investments from Earmarked Funds ²	Nil	22
Capital Expenditure		5,16	73,075.00*	67,118.17
(i) Investments in shares of Companies Corporations etc	Nil	8,19	6,239.08	5,524.23
(ii) Other Capital Expenditure	Nil	5,16	66,835.92	61,593.94
Contingency Fund (un-recouped)	4	Nil
Loans and Advances	Nil	7,18	7,981.79	8,132.18
Advances with departmental officers	Nil	21
Suspense and Miscellaneous Balances (Net)³	Nil	Nil
Remittances Balances	Nil	Nil
Cumulative excess of expenditure over receipts⁴	Nil	Nil	23,308.85	19,772.18
Total			1,04,410.57	96,522.97

¹The figures of assets and liabilities are cumulative figures. Please also see note 1 (v) in the section 'Notes to Finance Accounts'.

²Investments out of earmarked funds in shares of companies etc are excluded under capital expenditure and included under statements from 'Earmarked Funds'

³In this statement the line item 'Suspense and Miscellaneous Balances' does not include 'Cash Balance Investment Account' 'Departmental Balance' and 'Permanent Cash Imprest' which are included separately above though the latter forms part of this sector elsewhere in these Accounts.

⁴The Cumulative excess of expenditure over receipts is different from and not the fiscal/revenue deficit for the current year.

*Difference of ₹ 0.03 crore between rounded off grand total and corresponding rounded off absolute figure

Note: The difference between Summary and Detailed Statements in this Statement and all other Summary Statements in Finance Accounts Volume-1 is due to rounding-off in ₹ Crore/Lakh respectively.

1. STATEMENT OF FINANCIAL POSITION

(₹ in crore)

Liabilities	Reference (Sl. No.)		As on 31 st March 2025	As on 31 st March 2024
	Notes to Finance Account	Statement/ Appendix		
Borrowings (Public Debt)			75,554.53	70,369.12
(i) Internal Debt of the State Government	Nil	6,17	67,448.38	61,439.29
<i>Market Loans</i>	Nil	6,17	57,161.06	52,147.06
<i>Ways and Means Advances from RBI</i>	Nil	6,17	1,652.42	...
<i>Compensation and other Bonds</i>	Nil	6,17	2,023.35	2,312.40
<i>Loans from Financial Institution</i>	Nil	6,17	3,929.09	3,728.27
<i>Special Securities issued to National Small Savings Fund of Central Government</i>	Nil	6,17	2,682.46	3,251.56
(ii) Loans and Advances from Central Government	Nil	6,17	8,106.15	8,929.83
<i>Non-Plan Loans</i>	Nil	6,17	0.71	1.09
<i>Loans for State Plan Schemes</i>	Nil	6,17	1,172.40	2,958.77
<i>Other Loans for States/Union Territory with Legislature Schemes</i>	Nil	6,17	6,932.91	5,969.84
<i>Other loans (Pre 1984-85 loans)</i>	Nil	6,17	0.13	0.13
Contingency Fund (corpus)	4	21	5.00	5.00
Liabilities on Public Account			28,851.04	26,148.85
(i) Small Savings, Provident Funds etc.	Nil	21	20,867.39	19,337.58
(ii) Reserve Funds	Nil	21	2,879.44	2,279.77
(iii) Deposits	Nil	21	4,030.03	3,645.97
(iv) Remittance Balances	Nil	21	804.23	620.25
(v) Suspense and Miscellaneous Balances (Net)*	Nil	21	269.95	265.28
Cumulative excess of receipts over expenditure	Nil	Nil
Total			1,04,410.57	96,522.97

*See footnote 3 at page 2 Vol.-I

2. STATEMENT OF RECEIPTS AND DISBURSEMENTS

(₹ in crore)

Receipts			Disbursements		
	2024-25	2023-24		2024-25	2023-24
Part - I Consolidated Fund					
Section - A : Revenue					
Revenue Receipts (Ref. Statement 3 & 14)	40,872.35(a)	39,173.05	Revenue Expenditure (Ref. Statement 4-A,4-B & 15)	47,676.95(a)	44,731.63
Tax revenue (raised by the State) (Ref. Statement 3 & 14)	12,772.00	11,835.29	Salaries ⁽¹⁾ (Ref. Statement 4-B & Appendix-I)	15,335.03	15,046.97
Non-tax revenue (Ref. Statement 3 & 14)	3697.50*	3,020.89	Subsidies ⁽¹⁾ (Ref. Statement 4-B & Appendix-II)	1,872.20	1,768.35
Interest receipts (Ref. Statement 3 & 14)	556.18	126.06	Grants-in-aid ^{(1), (2)} (Ref. Statement 4-B,10 & Appendix-III)	6,231.02	5,092.21
Others (Ref. Statement 3)	3,141.32	2,894.83	General services (Ref. Statement 4 & 15)	17,542.24	16,435.51
	Interest Payment and service of debt (Ref. Statement 4-A,4-B & 15)	6,260.93	5,648.37
Share of Union Taxes/Duties (Ref. Statement 3 & 14)	10,681.24	9,374.72	Pension (Ref. Statement 4-A,4-B & 15)	10,536.17	10,055.85
			Others (Ref. Statement 4-B)	745.14	731.29
			Social services (Ref. Statement 4-A & 15)	4,592.88	5,043.98
			Economic services (Ref. Statement 4-A & 15)	2,103.58	1,344.61
Grants from Central Government (Ref. Statement 3 & 14)	13,721.61	14,942.15	Compensation and assignment to Local Bodies and PRIs (Ref. Statement 4-A & 15)
Revenue Deficit	6,804.60	5,558.59	Revenue Surplus
Section - B : Capital					
Capital Receipts (Ref. Statement 3 & 14)	...	2.20	Capital Expenditure (a),(b) (Ref. Statement 4A,4B & 16)	5,956.83	5,629.79
			General Services (Ref. Statement 4-A & 16)	328.35	356.71
			Social Services (Ref. Statement 4-A & 16)	1,918.29	1,743.61
			Economic Services (Ref. Statement 4-A & 16)	3,710.19	3,529.47
Recoveries of Loans and Advances (Ref. Statement 3,7 & 18)	184.64	27.40	Loans and Advances disbursed (Ref. Statement 4-A,7 & 18)	34.25	106.95
General Services	General Services (Ref. Statement 4-A,7 & 18)
Social Services	0.07	0.12	Social Services (Ref. Statement 4-A,7 & 18)
Economic Services	178.56	21.52	Economic Services (Ref. Statement 4-A,7 & 18)	27.40	98.35

⁽¹⁾ Salary, Subsidy and Grants-in-aid figures have been summed up across all sectors to present a consolidated figure. The expenditure in this statement under the sectors 'General','Social' and 'Economic' services does not include expenditure on salaries, subsidies and grants-in-aid (explained in footnote 2) under Revenue Expenditure and salaries under capital expenditure. Salaries, sometimes, also figure under capital expenditure. The expenditure booked in the object head Salary is excluding ROP.

⁽²⁾ Grants-in-aid are given to statutory corporations, companies, autonomous bodies, local bodies etc. by the Government which is included as a line item above. These grants are distinct from compensation and assignment of taxes, duties to the Local Bodies which is depicted as a separate line item 'Compensation and assignment to Local Bodies and PRIs'.

* Includes an amount of ₹ 0.90 crore by way of book adjustment. See also footnote at page no.72 Statement No.14 (Vol.II)

(a) Differs from figures in Statement 3,4A and 4B due to different level of rounding-off.

2. STATEMENT OF RECEIPTS AND DISBURSEMENTS

(₹ in crore)

Receipts			Disbursements		
	2024-25	2023-24		2024-25	2023-24
Section - B : Capital					
Loan and Advances to Government Servants (Ref. Statement 7 & 18)	6.01	5.76	Others (Ref. Statement 7)	6.85	8.60
Public Debt receipts (Ref. Statement 3,6 & 17)	26,622.16	14,901.51	Repayment of Public Debt (Ref. Statement 4-A,6 & 17)	18,168.81	7,895.87
Internal Debt (Market Loans NSSF etc.) (Ref. Statement 3,6 & 17)	24,100.47	13,252.36	Internal Debt (Market Loans NSSF etc.) (Ref. Statement 4-A,6 & 17)	18,091.38	7,788.24
Loans from Government of India (Ref. Statement 3,6 & 17)	2,521.69	1,649.15	Loans from Government of India (Ref. Statement 4-A,6 & 17)	77.43	107.63
Inter-State Settlement Account *	Inter-State Settlement Account *
			Appropriation to Contingency Fund
Total Receipts Consolidated Fund ** (Ref. Statement 3)	67,679.15	54,104.16	Total Expenditure Consolidated Fund ** (Ref. Statement 4)	71,836.84	58,364.24
Fiscal Deficit (a)	12,611.04	11,265.72	Fiscal Surplus
Deficit in Consolidated Fund	4,157.69	4,260.08	Surplus in Consolidated Fund
Part - II Contingency Fund					
Contingency Fund	Contingency Fund
Part - III Public Account					
Small Savings (Ref. Statement 21)	5,167.31	4,794.75	Small Savings (Ref. Statement 21)	3,637.50	3,139.42
Reserves and Sinking Funds (Ref. Statement 21)	1,553.51	1,645.78	Reserves and Sinking Funds (Ref. Statement 21)	953.84	1,300.73
Deposits (Ref. Statement 21)	4,121.65	4,071.13	Deposits (Ref. Statement 21)	3,737.59	4,033.64
Advances (Ref. Statement 21)	Advances (Ref. Statement 21)
Suspense and Miscellaneous (Ref. Statement 21)	20,818.84	44,949.83	Suspense and Miscellaneous ³ (Ref. Statement 21)	19,356.36	42,722.13
Remittances (Ref. Statement 21)	7,456.22	9,076.55	Remittances (Ref. Statement 21)	7,272.25	8,950.26
Total Receipts Public Account (Ref. Statement 21)	39,117.53	64,538.04	Total Disbursements Public Account (Ref. Statement 21)	34,957.54	60,146.18
Deficit in Public Account	Surplus in Public Account	4,159.99	4,391.86
Opening Cash Balance (Ref. Statement 21)	42.44	(-)89.33	Closing Cash Balance (Ref. Statement 21)	44.74	42.44
Increase in Cash Balance	2.30	131.78	Decrease in Cash Balance

(a) Fiscal Deficit = (Revenue Expenditure + Capital Expenditure + Loans and Advances disbursed + Interstate Settlement + Appropriation to Contingency Fund) - (Revenue Receipts + Misc. Capital Receipts + Recovery of Loans and Advances + Interstate Settlement)

* Interstate settlement Account - This depicts figures under MH 7810 relating to the Financial settlement between States/States and Union wherever applicable.

** Differs from figures in Statement 3,4A and 4B due to different level of rounding-off.

^[3] 'Suspense and Miscellaneous' includes 'other accounts' such as Cash Balance Investment account (Major Head 8673) etc. The figures may appear huge on account of these other accounts. Details may please be seen in Statement 21.

2. STATEMENT OF RECEIPTS AND DISBURSEMENTS-Contd.
Annexure to Statement No.2 CASH BALANCES AND INVESTMENT OF CASH BALANCES

₹ in crore

Overall Cash Position of the Government	As on 31 March 2025	As on 31 March 2024
(A) General Cash Balances -		
1 Cash in Treasuries
2 Deposit with Reserve Bank*	44.74 (a)	42.44
Total	44.74	42.44
3 Investments held in the "Cash Balance Investment Account"	...	1,457.81
Total-(A)-General Cash Balances	44.74	1,500.25
(B) Other Cash Balances and Investments -		
1 Cash with departmental Officers viz. Public Works etc.	0.16	0.16
2 Permanent Advance for contingent expenditure with departmental Officers	0.03	0.03
Total-(B) Other Cash Balances and Investments	0.19	0.19
Total-(A) and (B)	44.93	1,500.44

* The balance under the head "Deposit with Reserve Bank" is arrived at after taking into account the Inter Government monetary settlements pertaining to transactions of financial year 2024-25 advised to the Reserve Bank of India till 10 April 2025.

(a) There was a difference of ₹ 6.96 crore (Dr) between the figures reflected in the accounts {₹ 44.74 crore (Dr)} and as intimated by the Reserve Bank of India {₹ 37.78 crore (Cr)}.

EXPLANATORY NOTES

(a) Cash and Cash Equivalent:- Cash and cash equivalents consist of cash in treasuries and deposit with Reserve Bank of India and other Banks and Remittances in Transit. The Balance under the Head "Deposits with Reserve Bank" depicts combined balance of the Consolidated Fund, Contingency Fund and the Public Account at the end of the year. To arrive at the overall cash position, the cash balances with treasuries, departments and investments out of the cash balances/reserve funds etc. are added to the balance in "Deposits with Reserve Bank of India".

(b) Daily Cash Balance: Under an agreement with the Reserve Bank of India, the State Government has to maintain a minimum cash balance of ₹ 0.55 crore with the Bank. If the balance falls below the agreed minimum on any day the deficiency is made good by taking Ordinary and Special Drawing Facility/Overdrafts from time to time.

For arriving at the daily cash balance* for the purpose of grant of Ways and Means Advances/Overdraft, the RBI evaluates the holdings of the 14 day treasury bills along with the transactions reported (at Reserve Bank of India counters Inter-Government transactions and Treasury transactions reported by the agency banks) for the day. To the cash balance so arrived the maturity of 14 days Treasury Bills if any, is added and excess balance, if any, after maintaining the minimum cash balance is reinvested in Treasury Bills. If the net cash balance arrived at results in less than the minimum cash balance or a credit balance and if there are no 14 day treasury bills maturing on that day, Reserve Bank of India rediscounts the holdings of the 14 day Treasury Bills and makes good the shortfall. If there is no holding of 14 day Treasury Bills on that day the State Government applies for Ways and Means Advances/Special Drawing Facility/ Over Draft.

(c) Ways and Means Advances: The limit for ordinary ways and means advances to the State Government was ₹ 777.00 crore with effect from 01.07.2024. The Bank has also agreed to give Special Drawing Facility against the pledge of Government Securities. The limit of Special Drawing Facility is revised by the Reserve Bank of India from time to time.

* The cash balance (Deposit with Reserve Bank of India) above is the closing cash balance of the year as on 31 March 2025 but worked out by 10 April 2025 and not simply the daily balance on 31 March 2025.

EXPLANATORY NOTES

The extent to which the Government maintained the minimum cash balance with the Reserve Bank of India during 2024-25 is given below: -

(i) Number of days on which the minimum balance was maintained without taking any advance	203
(ii) Number of days on which the minimum balance was maintained by taking ordinary ways and means advance	120
(iii) Number of days on which the minimum balance was maintained by taking special ways and means advance	...
(iv) Number of days on which there was shortfall in minimum balance even after taking the above advances but no overdraft was taken	...
(v) Number of days on which overdrafts were taken	42

To make up the deficiency in the Cash Balance 14 day treasury bills for ₹ 17,886.22 crore were invested on 76 occasions and ₹ 19,344.03 crore rediscounted on 116 occasions during the year 2024-25.

The following is an analysis of the Investments held in the Cash Balance Investment Account:-

(₹ in crore)

	Opening balance as on 1 April 2024	Purchases during the year 2024-25	Sales during the year 2024-25	Closing balance on 31 March 2025	Interest realised during the year 2024-25
1	2	3	4	5	6
Government of India Treasury Bills	1,457.81	17,886.22	19,344.03	...	9.26
Total	1,457.81	17,886.22	19,344.03	...	9.26

3. STATEMENT OF RECEIPTS IN CONSOLIDATED FUND

(₹ in crore)

Description		2024-25	2023-24
I. TAX AND NON-TAX REVENUE			
(A)	Tax Revenue		
A.1	Own Tax Revenue	12,772.01	11,835.30
	State Goods and Services Tax (SGST)	5,816.61	5,339.89
	Land Revenue	15.59	7.03
	Stamps and Registration Fees	491.12	440.37
	State Excise	2,698.23	2,692.33
	Taxes on Sales, Trade etc.	1,842.30	1,753.73
	Taxes on Vehicles	907.04	781.74
	Taxes on Goods and Passengers	76.04	70.88
	Taxes and Duties on Electricity	494.88	369.07
	Other Taxes and Duties on Commodities and Services	430.20	380.26
A.2	Share of net proceeds of Union Taxes/Duties	10,681.24	9,374.72
	Central Goods and Services Tax (CGST)	3,119.54	2,845.13
	Corporation Tax	3,030.83	2,813.87
	Taxes on Income other than Corporation Tax	3,865.36	3,249.67
	Customs	543.46	328.53
	Union Excise Duties	104.56	124.32
	Service Tax	0.30	1.73
	Other Taxes and Duties on Commodities and Services	17.19	11.47
	Total - (A)	23,453.25	21,210.02
(B)	Non -Tax Revenue		
	Interest Receipts	556.18	126.06
	Dividends and Profits	191.04	191.17
	Public Service Commission	4.55	4.94
	Police	58.06	65.53
	Jails	0.15	0.16
	Supplies and Disposals	0.10	0.04
	Stationery and Printing	10.08	8.88
	Public Works	47.38	53.86
	Other Administrative Services	40.85	40.50
	Contributions and Recoveries towards Pension and Other Retirement benefits	130.80	177.23
	Miscellaneous General Services	4.77	2.62
	Education, Sports, Art and Culture	49.64	59.80
	Medical and Public Health	25.65	24.47
	Family Welfare	0.02	0.01
	Water Supply and Sanitation	58.25	51.99
	Housing	5.31	4.34
	Urban Development	7.33	5.23
	Information and Publicity	0.37	0.73
	Labour and Employment	15.50	11.66
	Social Security and Welfare	12.74	20.05
	Other Social Services	4.79	0.02
	Crop Husbandry	16.19	24.99
	Animal Husbandry	2.01	0.46
	Fisheries	5.36	3.13
	Forestry and Wild Life	85.66	89.95
	Plantations	...	0.01
	Food, Storage and Warehousing	0.09	0.10

3. STATEMENT OF RECEIPTS IN CONSOLIDATED FUND

(₹ in crore)

Description		2024-25	2023-24
I.TAX AND NON-TAX REVENUE			
(B) Non Tax Revenue- Concl.			
	Cooperation	4.36	3.38
	Other Agricultural Programmes	0.04	0.07
	Other Rural Development Programmes	14.98	5.53
	Other Special Areas Programmes	0.03	0.05
	Major Irrigation	0.63	...
	Medium Irrigation	0.01	0.02
	Minor Irrigation	1.71	0.77
	Power	1,894.30	1,667.35
	Village and Small Industries	1.70	1.67
	Industries	18.77	20.22
	Non-Ferrous Mining and Metallurgical Industries	358.16	331.73
	Roads and Bridges	57.56	10.02
	Road Transport	0.11	0.05
	Other Scientific Research	0.75	0.27
	Tourism	4.29	3.37
	Civil Supplies	0.11	0.39
	Other General Economic Services	7.14	8.06
	Total - (B)	3,697.52	3,020.88
II.GRANTS FROM GOVERNMENT OF INDIA			
(C) Grants-in-Aid from Central Government			
Centrally Sponsored Schemes			
	Central Assistance/Share	3,590.43	3,394.54
	Externally Aided Projects-Grants for Centrally Sponsored Schemes	1,262.89	1,198.65
	Grants under Art 275(1) of the Constitution	22.44	16.96
	Grants from Central Road and Infrastructure Fund	130.96	136.32
	Special Component Plan for Scheduled Castes	866.23	470.48
	Tribal Area Sub Plan	281.66	113.96
	Deduct-Refunds	(-0.03)	(-2.22)
	Total-Grants for Centrally Sponsored Schemes	6,154.58	5,328.69
Finance Commission Grants			
	Post Devolution Revenue Deficit Grant	6,258.00	8,058.00
	Grants for Rural Local Bodies	433.24	118.51
	Grants for Urban Local Bodies	177.24	158.04
	Grants-in-Aid for State Disaster Response Fund	378.40	360.80
	Grants-in-Aid for State Disaster Mitigation Fund	184.65	42.80
	Total-Finance Commission Grants	7,431.53	8,738.15
Other Transfer/Grants to State/Union Territories with Legislatures			
	Grants towards Contribution to National Disaster Response Fund (NDRF)	84.56	787.25
	Special Assistance	...	0.05
	Compensation for loss of revenue arising out of implementation of GST	50.93	88.00
	Total- Other Transfer/Grants to State/Union Territories with Legislatures	135.49	875.30
	Total- C	13,721.60	14,942.14
	Total- Revenue Receipts (A+B+C)	40,872.37	39,173.04

3. STATEMENT OF RECEIPTS IN CONSOLIDATED FUND

(₹ in crore)

Description	2024-25	2023-24
III. CAPITAL, PUBLIC DEBT AND OTHER RECEIPTS		
D. Capital Receipts		
Others	...	2.20
Total- D	...	2.20
E. Public Debt Receipts		
Internal Debt	24,100.47	13,252.36
Market Loans	7,359.00	8,072.00
Compensation and other Bonds
Loans from Financial Institutions	866.77	799.99
Special Securities issued to National Small Savings Fund of the Central Government
Ways and Means Advances from the Reserve Bank of India	15,874.70	4,380.37
Loans and Advances from the Central Government	2,521.69	1,649.15
Other Loans for States/Union Territory with Legislature Schemes
Block Loans	2,521.69	1,649.15
Total- E	26,622.16	14,901.51
F. Loans and Advances given by the State Government (Recoveries)	184.64	27.40
Social Services	0.07	0.12
Economic Services	178.56	21.52
Others	6.01	5.76
G. Inter State Settlement
Total Receipts in Consolidated Fund (A+B+C+D+E+F+G)	67,679.17	54,104.15

4. STATEMENT OF EXPENDITURE (CONSOLIDATED FUND)

A. EXPENDITURE BY FUNCTION

(₹ in crore)

	Description	Revenue	Capital	Loans and Advances	Total
A	General Services				
A.1	Organs of State	468.07	468.07
	Parliament/State/Union Territory Legislatures	47.79	47.79
	President/Vice-President/Governor/Administrator of Union Territories	8.81	8.81
	Council of Ministers	19.17	19.17
	Administration of Justice	366.64	366.64
	Elections	25.66	25.66
A.2	Fiscal Services	463.66	463.66
	Land Revenue	255.15	255.15
	Stamps and Registration	0.59	0.59
	State Excise	95.26	95.26
	Taxes on Sales, Trade etc.	15.00	15.00
	Taxes on Vehicles	22.92	22.92
	Collection Charges Under States Goods and Services Tax	6.83	6.83
	Other Taxes and Duties on Commodities and Services	66.75	66.75
	Other Fiscal Services	1.16	1.16
A.3	Interest Payment and Servicing of Debt	6,260.93	6,260.93
	Interest Payments	6,260.93	6,260.93
A.4	Administrative Services	2,620.15	328.35	...	2,948.50
	Public Service Commission	20.96	20.96
	Secretariat-General Services	101.91	101.91
	District Administration	270.61	270.61
	Treasury and Accounts Administration	57.00	57.00
	Police	1,553.46	49.44	...	1,602.90
	Jails	59.45	59.45
	Supplies and Disposals	1.38	1.38
	Stationery and Printing	24.20	24.20
	Public Works	331.92	255.73	...	587.65
	Vigilance	43.06	43.06
	Other Administrative Services	156.20	23.18	...	179.38

4. STATEMENT OF EXPENDITURE (CONSOLIDATED FUND)

A. EXPENDITURE BY FUNCTION

(₹ in crore)

	Description	Revenue	Capital	Loans and Advances	Total
A	General Services - (Concl'd.)				
A.5	Pensions and Miscellaneous General Services	10,559.65	10,559.65
	Pensions and other Retirement benefits	10,536.17	10,536.17
	Miscellaneous General Services	23.48	23.48
	Total A - General Services	20,372.46	328.35	...	20,700.81
B	Social Services				
B.1	Education, Sports, Art and Culture	8,750.06	340.06	...	9,090.12
	General Education	8,578.48	340.06	...	8,918.54
	Technical Education	102.92	102.92
	Sports and Youth Services	33.70	33.70
	Art and Culture	34.96	34.96
B.2	Health and Family Welfare	3,078.18	583.93	...	3,662.11
	Medical and Public Health	2,498.68	583.93	...	3,082.61
	Family Welfare	579.50	579.50
B.3	Water Supply, Sanitation, Housing and Urban Development	2,510.85	894.26	...	3,405.11
	Water Supply and Sanitation	1,146.05	734.97	...	1,881.02
	Housing	706.02	57.83	...	763.85
	Urban Development	658.78	101.46	...	760.24
B.4	Information and Broadcasting	50.34	0.80	...	51.14
	Information and Publicity	50.34	0.80	...	51.14
B.5	Welfare of Scheduled Castes, Scheduled Tribes, Other Backward Classes and Minorities	54.50	11.15	...	65.65
	Welfare of Scheduled Castes, Scheduled Tribes, Other Backward Classes and Minorities	54.50	11.15	...	65.65
B.6	Labour and Labour Welfare	315.89	315.89
	Labour, Employment and Skill Development	315.89	315.89
B.7	Social Welfare and Nutrition	3,084.46	88.09	...	3,172.55
	Social Security and Welfare	2,257.00	88.09	...	2,345.09
	Nutrition	116.09	116.09
	Relief on Account of Natural Calamities	711.37	711.37
B.8	Others	43.80	43.80
	Other Social Services	0.58	0.58
	Secretariat-Social Services	43.22	43.22
	Total B - Social Services	17,888.08	1,918.29	...	19,806.37

4. STATEMENT OF EXPENDITURE (CONSOLIDATED FUND)

A. EXPENDITURE BY FUNCTION

(₹ in crore)

	Description	Revenue	Capital	Loans and Advances	Total
C	Economic Services				
C.1	Agriculture and Allied Activities	2,574.81	42.15	...	2,616.96
	Crop Husbandry	681.48	11.44	...	692.92
	Soil and Water Conservation	66.67	0.06	...	66.73
	Animal Husbandry	463.25	9.08	...	472.33
	Dairy Development	28.55	28.55
	Fisheries	27.42	16.17	...	43.59
	Forestry and Wild Life	799.52	5.37	...	804.89
	Plantations	0.83	0.83
	Food, Storage and Warehousing	190.49	0.02	...	190.51
	Agricultural Research and Education	268.39	268.39
	Cooperation	48.21	0.01	...	48.22
C.2	Rural Development	1,943.55	30.25	...	1,973.80
	Special Programmes for Rural Development	152.02	152.02
	Rural Employment	648.86	648.86
	Land Reforms	1.09	1.09
	Other Rural Development Programmes	1,141.58	30.25	...	1,171.83
C.3	Special Areas Programmes
C.4	Irrigation and Flood Control	410.02	388.53	...	798.55
	Major Irrigation	11.23	11.23
	Medium Irrigation	12.46	16.73	...	29.19
	Minor Irrigation	385.42	268.19	...	653.61
	Command Area Development	...	34.89	...	34.89
	Flood Control and Drainage	0.91	68.72	...	69.63
C.5	Energy	1,914.34	138.15	27.40	2,079.89
	Power	1,912.31	138.15	27.40	2,077.86
	New and Renewable Energy	2.03	2.03
C.6	Industry and Minerals	113.77	89.28	...	203.05
	Village and Small Industries	88.85	89.28	...	178.13
	Industries	12.50	12.50
	Non-Ferrous Mining and Metallurgical Industries	12.42	12.42
C.7	Transport	2,269.09	2,663.49	...	4,932.58
	Capital Outlay on Indian Railways-Commercial Lines	...	(-201.70)*	...	(-201.70)
	Civil Aviation	9.53	514.72	...	524.25
	Roads And Bridges	1,567.78	1,768.55	...	3,336.33
	Road Transport	691.71	556.51	...	1,248.22
	Inland Water Transport	0.07	0.07

* Represents adjustment of unspent amount refunded by Land Acquisition Officer booked as an expenditure in previous years.

4. STATEMENT OF EXPENDITURE (CONSOLIDATED FUND)

A. EXPENDITURE BY FUNCTION

(₹ in crore)

	Description	Revenue	Capital	Loans and Advances	Total
C	Economic Services - (Concl.)				
C.7	Transport - (Concl.)				
	Other Transport Services	...	25.41	...	25.41
C.8	Communications
C.9	Science Technology and Environment	8.72	8.72
	Other Scientific Research	8.39	8.39
	Ecology and Environment	0.33	0.33
C.10	General Economic Services	182.15	358.35	...	540.50
	Secretariat-Economic Services	32.19	32.19
	Tourism	108.71	109.51	...	218.22
	Census Surveys and Statistics	17.32	17.32
	Civil Supplies	20.54	20.54
	Other General Economic Services	3.39	248.84	...	252.23
	Total C - Economic Services	9,416.45	3,710.20	27.40	13,154.05
E.	Loans to Government Servants Etc.				
	Loans to Government Servants etc.	6.85	6.85
	Total E - Loans to Government Servants Etc.	6.85	6.85
F.	Public Debt				
	Internal Debt of the State Government	18,091.38	18,091.38
	Loans and Advances from the Central Government	77.43	77.43
	Total F - Public Debt	18,168.81	18,168.81
	Total Consolidated Fund Expenditure	47,676.99	5,956.84	18,203.06	71,836.89*

* Difference of ₹ 0.04 crore between rounded off grand total and corresponding rounded off absolute figure

4. STATEMENT OF EXPENDITURE (CONSOLIDATED FUND)
B. EXPENDITURE BY NATURE

(₹ in crore)

Object Head Code	Object of Expenditure	2024-25			2023-24		
		Revenue	Capital	Total	Revenue	Capital	Total
1	Salaries	15,335.03	...	15,335.03	15,046.97	...	15,046.97
2	Wages	312.45	...	312.45	305.61	...	305.61
3	Travel Expenses	41.62	...	41.62	39.28	...	39.28
4	Liveries	4.35	...	4.35	4.41	...	4.41
5	Office Expenses	208.24	...	208.24	183.64	...	183.64
6	Medical Reimbursement	188.81	...	188.81	183.36	...	183.36
7	Rent, Rates and Taxes	43.27	...	43.27	36.48	...	36.48
8	Publications	2.79	...	2.79	2.01	...	2.01
9	Advertising and Publicity	34.59	...	34.59	33.61	...	33.61
10	Hospitality and Entertainment Expenses	10.07	...	10.07	8.89	...	8.89
11	Furnishings	0.47	...	0.47	2.03	...	2.03
12	Professional and Special Service	36.95	...	36.95	23.32	...	23.32
15	Training	5.47	...	5.47	3.35	...	3.35
16	Social Security Pension	1,454.75	...	1,454.75	1,251.54	...	1,251.54
17	Emoluments	4.69	...	4.69	4.91	...	4.91
19	Secret Service Expenditure	0.29	...	0.29	0.50	...	0.50
20	Other Charges	2,666.97(a)	...	2,666.97	3,438.77	...	3,438.77
21	Maintenance	1,818.71	...	1,818.71	2,074.18	...	2,074.18
23	Interest	6,260.93	...	6,260.93	5,648.37	...	5,648.37
27	Motor Vehicles (Purchase)	8.66	...	8.66	4.67	...	4.67
28	Sumptuary Allowance	0.26	...	0.26	0.29	...	0.29
29	Compensations	659.26	167.10	826.36	213.12	42.82	255.94
30	Motor Vehicles	95.87	...	95.87	68.23	...	68.23
31	Machinery and Equipment	30.95	220.36	251.31	21.58	92.96	114.54
32	Rewards	0.02	...	0.02	0.02	...	0.02
33	Material and Supply	474.12	53.12	527.24	361.63	44.99	406.62
36	Minor Works	273.26	...	273.26	145.51	...	145.51
37	Major Works	...	5,207.23	5,207.23	...	5,327.16	5,327.16
38	Pensions	9,543.85(b)	...	9,543.85	9,212.64	...	9,212.64
39	Gratuity	1,152.53(b)	...	1,152.53	1,081.82	...	1,081.82
40	Scholarships Stipends and Concession	113.54	...	113.54	98.46	...	98.46
41	Grants-in-Aid General (Salary)	1,814.02	...	1,814.02	1,771.45	...	1,771.45
42	Grants-in-Aid General (Non-Salary)	3,233.80	...	3,233.80	2,409.71	...	2,409.71
43	Investment	...	716.31 (c)	716.31	...	182.52	182.52
44	Grants-in-Aid for Capital Assets	1,183.20	...	1,183.20	911.05	...	911.05
48	Loans & Borrowings	...	18,203.06	18,203.06	...	8,002.83	8,002.83

4. STATEMENT OF EXPENDITURE (CONSOLIDATED FUND)
B. EXPENDITURE BY NATURE

(₹ in crore)

Object Head Code	Object of Expenditure	2024-25			2023-24		
		Revenue	Capital	Total	Revenue	Capital	Total
62	Subsidy on Interests	5.25	...	5.25
63	Subsidy	1,872.20	...	1,872.20	1,768.35	...	1,768.35
64	Transfer Expenses	5.51	...	5.51	1.48	...	1.48
65	Remuneration to Outsourced Employees	223.66	...	223.66	210.05	...	210.05
70	Energy Charges	490.02	...	490.02	503.74	...	503.74
79	Suspense	547.98	...	547.98	746.92	...	746.92
99	Honorarium	604.69	...	604.69	503.50	...	503.50
	Total (Gross)	50,757.85	24,567.18	75,325.03	48,330.70	13,693.28	62,023.98
90	Deduct Recoveries	3,080.90	407.28	3,488.18	3,599.05	60.66	3,659.71
	Total (Net)	47,676.95*	24,159.90	71,836.85*	44,731.65	13,632.62	58,364.27

* Differs from figures in Statement 2 and 4 A due to different level of rounding-off.

(a) Includes ₹ 1,431.85 crore on account of expenditure and transfer to Reserve Fund (SDRF/NDRF/SDMF), repairs maintenance charges & Direction & Administration etc.

(b) Total Pension figure of ₹ 10,536.17 crore in statement 2 & 4A differ due to depiction of Pensions; ₹ 9,543.85 crore, Gratuities; ₹ 1,152.53 crore and Deduct recoveries; ₹ 160.21 crore (included in deduct row) separately in Statement 4 B.

(c) Differs with figure of ₹ 1.46 crore given in statement 8 due to redemption of ₹ 1.48 crore and addition of ₹ 0.02 crore in Cooperative Societies.

5. STATEMENT OF PROGRESSIVE CAPITAL EXPENDITURE

Major Description Head	Expenditure during 2023-24	Progressive expenditure upto 2023-24	Expenditure during 2024-25	Progressive expenditure upto 2024-25	Increase (+)/ Decrease (-) in per cent during the year 2024-25
1	2	3	4	5	6
(₹ in crore)					
A. Capital Account of General Services					
4047 Capital Outlay on other Fiscal Services	...	0.08	...	0.08	...
4055 Capital Outlay on Police	76.41	765.67	49.44	815.11	(-)35.30
4058 Capital Outlay on Stationery and Printing	...	6.59	...	6.59	...
4059 Capital Outlay on Public Works	269.77	2,190.65	255.73	2,446.38	(-)5.20
4070 Capital Outlay on other Administrative Services	10.53	134.93	23.18	158.10	(+)120.13
Total - A. Capital Account of General Services	356.71	3,097.92	328.35	3,426.26	(-)7.95
B. Capital Account of Social Services					
<i>(a) Capital Account of Education, Sports, Art and Culture</i>					
4202 Capital Outlay on Education, Sports, Art and Culture	300.30	4,986.20	340.06	5,326.26	(+)13.24
Total - (a) Capital Account of Education, Sports, Art and Culture	300.30	4,986.20	340.06	5,326.26	(+)13.24
<i>(b) Capital Account of Health and Family Welfare</i>					
4210 Capital Outlay on Medical and Public Health	295.67	3,563.04	583.93	4,146.97	(+)97.49
4211 Capital Outlay on Family Welfare	...	33.22	...	33.22	...
Total - (b) Capital Account of Health and Family	295.67	3,596.26	583.93	4,180.19	(+)97.49
<i>(c) Capital Account of Water Supply, Sanitation, Housing and Urban Development</i>					
4215 Capital Outlay on Water Supply and Sanitation	1,022.97	10,335.44	734.97	11,070.41	(-)28.15
4216 Capital Outlay on Housing	24.82	1,139.81	57.83	1,197.64	(+)133.00
4217 Capital Outlay on Urban Development	61.24	466.88	101.46	568.34	(+)65.68

5. STATEMENT OF PROGRESSIVE CAPITAL EXPENDITURE

Major Head	Description	Expenditure during 2023-24	Progressive expenditure upto 2023-24	Expenditure during 2024-25	Progressive expenditure upto 2024-25	Increase (+)/ Decrease (-) in per cent during the year 2024-25
1		2	3	4	5	6
(₹ in crore)						
B. Capital Account of Social Services - (Concl'd.)						
<i>(c) Capital Account of Water Supply, Sanitation, Housing and Urban Development - (Concl'd.)</i>						
Total - (c) Capital Account of Water Supply, Sanitation, Housing and Urban Development		1,109.03	11,942.13	894.26	12,836.39	(-)19.37
<i>(d) Capital Account of Information and Broadcasting</i>						
4220	Capital Outlay on Information and Publicity	0.47	12.24	0.80	13.04	(+)70.21
Total - (d) Capital Account of Information and Broadcasting		0.47	12.24	0.80	13.04	(+)70.21
<i>(e) Capital Account of Welfare of Scheduled Castes, Scheduled Tribes and other Backward Classes</i>						
4225	Capital Outlay on Welfare of Scheduled Castes, Scheduled Tribes, Other Backward Classes and Minorities	1.27	232.55	11.15	243.70	(+)777.95
Total - (e) Capital Account of Welfare of Scheduled Castes, Scheduled Tribes and other Backward Classes		1.27	232.55	11.15	243.70	(+)777.95
<i>(g) Capital Account of Social Welfare and Nutrition</i>						
4235	Capital Outlay on Social Security and Welfare	35.96	182.24	88.09	270.33	(+)144.97
Total - (g) Capital Account of Social Welfare and Nutrition		35.96	182.24	88.09	270.33	(+)144.97
<i>(h) Capital Account of other Social Services</i>						
4250	Capital Outlay on other Social Services	0.91	18.36	...	18.36	(-)100.00
Total - (h) Capital Account of other Social Services		0.91	18.36	...	18.36	(-)100.00
Total - B. Capital Account of Social Services		1,743.61	20,969.98	1,918.29	22,888.27	(+)10.02

5. STATEMENT OF PROGRESSIVE CAPITAL EXPENDITURE

Major Description Head	Expenditure during 2023-24	Progressive expenditure upto 2023-24	Expenditure during 2024-25	Progressive expenditure upto 2024-25	Increase (+)/ Decrease (-) in per cent during the year 2024-25
1	2	3	4	5	6
(₹ in crore)					
C. Capital Account of Economic Services					
(a) Capital Account of Agriculture and Allied Activities					
4401 Capital Outlay on Crop Husbandry	(-)10.90	157.46	11.44	168.89	(-)204.95
4402 Capital Outlay on Soil and Water Conservation	0.57	553.14	0.06	553.20	(-)89.47
4403 Capital Outlay on Animal Husbandry	7.73	194.34	9.08	203.41	(+)17.46
4404 Capital Outlay on Dairy Development	...	5.38	...	5.38	...
4405 Capital Outlay on Fisheries	3.77	63.23	16.17	79.40	(+)328.91
4406 Capital Outlay on Forestry And Wildlife	6.07	222.91	5.37	228.28	(-)11.53
4408 Capital Outlay on Food Storage and Warehousing	0.07	39.97	0.02	39.98	(-)71.43
4415 Capital Outlay on Agricultural Research and Education	...	3.42	...	3.42	...
4416 Capital Outlay on Agricultural Financial Institutions	...	9.49	...	9.49	...
4425 Capital Outlay on Cooperation	0.27	79.21	0.01	79.22	(-)96.30
4435 Capital Outlay on other Agricultural Programmes	...	2.21	...	2.21	...
Total - (a) Capital Account of Agriculture and Allied Activities	7.58	1,330.76	42.15	1,372.88	(+)456.07
(b) Capital Account of Rural Development					
4515 Capital Outlay on other Rural Development Programme	24.56	170.96	30.25	201.21	(+)23.17
Total - (b) Capital Account of Rural Development	24.56	170.96	30.25	201.21	(+)23.17
(d) Capital Account of Irrigation and Flood Control					
4700 Capital Outlay on Major Irrigation	...	282.83	...	282.83	...
4701 Capital Outlay on Medium Irrigation	0.04	763.72	16.73	780.46	(+)41,725.00
4702 Capital Outlay on Minor Irrigation	294.69	3,300.66	268.19	3,568.85	(-)8.99
4705 Capital Outlay on Command Area Development	57.72	495.69	34.89	530.58	(-)39.55

5. STATEMENT OF PROGRESSIVE CAPITAL EXPENDITURE

Major Description Head	Expenditure during 2023-24	Progressive expenditure upto 2023-24	Expenditure during 2024-25	Progressive expenditure upto 2024-25	Increase (+)/ Decrease (-) in per cent during the year 2024-25
1	2	3	4	5	6
(₹ in crore)					
C. Capital Account of Economic Services - (Contd.)					
<i>(d) Capital Account of Irrigation and Flood Control - (Concl'd.)</i>					
4711 Capital Outlay on Flood Control Projects	33.02	1,627.28	68.72	1,696.00	(+)108.12
Total - (d) Capital Account of Irrigation and Flood Control	385.47	6,470.18	388.53	6,858.72	(+)0.79
<i>(e) Capital Account of Energy</i>					
4801 Capital Outlay on Power Projects	23.50	3,575.87	138.15	3,714.02	(+)487.87
Total - (e) Capital Account of Energy	23.50	3,575.87	138.15	3,714.02	(+)487.87
<i>(f) Capital Account of Industry and Minerals</i>					
4851 Capital Outlay on Village and Small Industries	72.09	879.00	89.28	968.29	(+)23.85
4853 Capital Outlay on Non-Ferrous Mining and Metallurgical Industries	...	0.12	...	0.12	...
4858 Capital Outlay on Engineering Industries	...	3.87	...	3.87	...
4859 Capital Outlay on Telecommunication and Electronic Industries	...	2.97	...	2.97	...
4885 Other Capital Outlay on Industries and Minerals	...	70.34	...	70.34	...
Total - (f) Capital Account of Industry and Minerals	72.09	956.30	89.28	1,045.59	(+)23.85
<i>(g) Capital Account of Transport</i>					
5002 Capital Outlay on Indian Railways-Commercial Lines	154.72	1,057.49	(-)201.70	855.79	(-)230.36
5053 Capital Outlay on Civil Aviation	315.82	460.21	514.72	974.93	(+)62.98
5054 Capital Outlay on Roads and Bridges	2,065.12	24,556.36	1,768.55	26,324.91	(-)14.36
5055 Capital Outlay on Road Transport	132.49	1,664.42	556.51	2,220.92	(+)320.04
5056 Capital Outlay on Inland Water Transport	...	2.20	...	2.20	...
5075 Capital Outlay on other Transport Services	12.26	31.42	25.41	56.83	(+)107.26
Total - (g) Capital Account of Transport	2,680.41	27,772.10	2,663.49	30,435.58	(-)0.63

5. STATEMENT OF PROGRESSIVE CAPITAL EXPENDITURE

Major Description Head	Expenditure during 2023-24	Progressive expenditure upto 2023-24	Expenditure during 2024-25	Progressive expenditure upto 2024-25	Increase (+)/ Decrease (-) in per cent during the year 2024-25
1	2	3	4	5	6
(₹ in crore)					
C. Capital Account of Economic Services - (Concl.)					
<i>(j) Capital Account of General Economic Services</i>					
5452 Capital Outlay on Tourism	63.72	455.00	109.51	564.51	(+)71.86
5465 Investment in General Financial and Trading Institutions	...	3.29	...	3.29	...
5475 Capital Outlay on other General Economic Services	272.14	2,315.80	248.84	2,564.64	(-)8.56
Total - (j) Capital Account of General Economic Services	335.86	2,774.09	358.35	3,132.44	(+)6.70
Total - C. Capital Account of Economic Services	3,529.47	43,050.26	3,710.20	46,760.44	(+)5.12
Grand Total	5,629.79	67,118.16	5,956.84*	73,074.97*	(+)5.81

* Difference of ₹ 0.01 crore between rounded off grand total and corresponding rounded off absolute figure.

EXPLANATORY NOTES

During 2024-25, the Government invested ₹ 507.63 crore in Statutory Corporation/Boards, ₹ 208.66 crore in Government and other Companies and net redemption of (-) ₹ 1.44 crore in Cooperative Societies/Banks.

The total investment of the Government in share capital and debentures of different concerns at the end of 2022-2023, 2023-2024 and 2024-2025 was ₹ 5,333.57 crore, ₹ 5,524.23 crore and ₹ 6,239.08 crore respectively. The dividend received at the end of 2022-2023, 2023-2024 and 2024-2025 was ₹ 180.90 crore, ₹ 191.17 crore and ₹ 191.04 crore respectively.

6. STATEMENT OF BORROWINGS AND OTHER LIABILITIES

(i) Statement of Public Debt and Other Liabilities

Nature of Borrowings	Balance as on 1 April 2024	Receipt during the year	Repayments during the year	Balance as on 31 March 2025	Net Increase(+) /Decrease (-) during the year 2024-25		As Percentage of total liability
					Amount	Percentage	
(₹ in crore)							
A Public Debt							
6003 Internal Debt of the State Government							
Market Loans	52,147.06	7,359.00	2,345.00	57,161.06	(+)5,014.00	(+)9.62	55.32
Compensation and other Bonds	2,312.40	...	289.05	2,023.35	(-)289.05	(-)12.50	1.96
Loans from Financial Institutions	3,728.27	866.77	665.95	3,929.09	(+)200.82	(+)5.39	3.80
Ways and Means Advances from the Reserve Bank of India	...	15,874.70	14,222.28	1,652.42	(+)1,652.42	...	1.60
Special Securities issued to National Small Savings Fund of the Central Government	3,251.56	...	569.10	2,682.46	(-)569.10	(-)17.50	2.60
Total- 6003	61,439.29	24,100.47	18,091.38	67,448.38	(+)6,009.09	(+)9.78	65.27
6004 Loans and Advances from the Central Govt.							
01 Non-Plan Loans -							
201 House Building Advances	0.08	...	0.01	0.07	(-)0.01	(-)12.50	...
800 Other Loans	1.01	...	0.36	0.65	(-)0.36	(-)35.64	...
Total - 01	1.09	...	0.37	0.72	(-)0.37	(-)33.94	...
02 Loans for State/Union Territory Plan Schemes							
101 Block Loans	1,231.94*	...	59.55	1,172.39	(-)59.55	(-)4.83	1.13
105 State plan loans consolidated in terms of recommendations of 12 th Finance Commission	9.83	...	9.83	...	(-)9.83	(-)100.00	...
Total - 02	1,241.77	...	69.38	1,172.39	(-)69.38	(-)5.59	1.13

* Differs from last year closing balance by ₹ 1,717.01 crore due to prior period adjustment on account of back to back loan of GST Compensation.

6. STATEMENT OF BORROWINGS AND OTHER LIABILITIES

(i) Statement of Public Debt and Other Liabilities

Nature of Borrowings	Balance as on 1 April 2024	Receipt during the year	Repayments during the year	Balance as on 31 March 2025	Net Increase(+) /Decrease (-) during the year 2024-25		As Percentage of total liability
					Amount	Percentage	
(₹ in crore)							
A Public Debt -Concl.							
6004 Loans and Advances from the Central Govt. Concl.							
<i>07 Pre-1984-85 Loans -</i>							
102 National Loan Scholarship Scheme	0.13	0.13
Total 07	0.13	0.13
<i>09 Other Loans for States/Union Territory with Legislature Schemes</i>							
101 Block Loans	4,418.90*	2,521.69	7.67	6,932.92	(+)2,514.02	(+)56.89	6.71
Total - 09	4,418.90	2,521.69	7.67	6,932.92	(+)2,514.02	(+)56.89	6.71
Total (6004)	5,661.89	2,521.69	77.42	8,106.16	(+)2,444.27	(+)43.17	7.84
Total-A Public Debt	67,101.18	26,622.16	18,168.80	75,554.54	(+)8,453.36	(+)12.60	73.12
B Other Liabilities							
Public Accounts							
Small Savings, Provident Funds etc.	19,337.58	5,167.31	3,637.50	20,867.39	(+)1,529.81	(+)7.91	20.19
Reserve funds bearing interest	1,969.07	1,486.58	716.45	2,739.20	(+)770.13	(+)39.11	2.65
Reserve funds not bearing interest	310.70	66.92	237.39	140.23	(-)170.47	(-)54.87	0.14
Deposits bearing interest	16.50	21.43	21.33	16.60	(+)0.10	(+)0.61	0.02
Deposits not bearing interest	3,629.99	4,100.23	3,716.27	4,013.95	(+)383.96	(+)10.58	3.88
Total-B Other Liabilities	25,263.84	10,842.47	8,328.94	27,777.37	(+)2,513.53	(+)9.95	26.88
Total Public Debt and Other liabilities	92,365.02	37,464.63	26,497.74	1,03,331.91**	(+)10,966.89	(+)11.87	100.00

* Differs from last year closing balance by ₹ 1,550.94 crore due to prior period adjustment on account of back to back loan of GST Compensation.

** Difference of ₹ 0.01 crore between rounded off grand total and corresponding rounded off absolute figure.

6. STATEMENT OF BORROWINGS AND OTHER LIABILITIES
EXPLANATORY NOTES

- 1 Amortisation arrangements:-** The State Government has not constituted Sinking Fund for loans raised by it in the open market.
- 2 Loans from Small Saving Fund: -** The loans received during 2024-25 amounted to ₹ Nil crore and ₹ 569.10 crore was repaid during the year. The balance outstanding at the end of the year was ₹ 2,682.46 crore which was 3.98 *per cent* of the total Internal Debt of the State Government and 3.55 *per cent* of the total Public Debt of the State Government as on 31 March 2025.
- 3 Internal Debt of the State Government, Market Loans etc.**
- (a) Market Loans:-** Long term loans raised in the open market fall under this category. During the year, thirteen loans amounting to ₹ 1,000.00 crore, ₹ 700.00 crore, ₹ 500.00 crore, ₹ 700.00 crore, ₹ 500.00 crore, ₹ 500.00 crore, ₹ 700.00 crore, ₹ 600.00 crore, ₹ 500.00 crore, ₹ 500.00 crore, ₹ 500.00 crore, ₹ 322.00 crore and ₹ 337.00 crore bearing interest @ 7.45 *per cent*, 7.47 *per cent*, 7.44 *per cent*, 7.46 *per cent*, 7.35 *per cent*, 7.25 *per cent*, 7.22 *per cent*, 7.08 *per cent*, 7.13 *per cent*, 7.11 *per cent*, 7.12 *per cent*, 7.26 *per cent* and 7.10 *per cent* respectively per annum were floated by the State Government at par which were realised in cash. These loans are redeemable in April 2044, May 2033, June 2034, June 2036, July 2034, August 2033, September 2039, October 2034, November 2039, December 2034, December 2036, March 2035, and March 2040, respectively.
- Ten long term Loans for ₹ 550.00 crore, ₹ 200.00 crore, ₹ 200.00 crore, ₹ 150.00 crore, ₹ 150.00 crore, ₹ 400 crore, ₹ 200 crore, ₹ 100 crore, ₹ 300 crore and ₹ 95.00 crore @ 9.63 *per cent*, 9.23 *per cent*, 8.98 *per cent*, 8.96 *per cent*, 9.00 *per cent*, 8.87 *per cent*, 8.45 *per cent*, 8.26 *per cent*, 8.13 *per cent* and 8.08 *per cent* respectively were notified for discharge.
- (b) Loans from the Life Insurance Corporation of India:-** These are also long term interest bearing loans granted by the Life Insurance Corporation of India for various schemes of the State Government and are repayable in accordance with the terms and conditions agreed upon by the State Government. During the year an amount of ₹ 2.85 crore were repaid to the Life Insurance Corporation of India.
- (c) Loans from the National Bank for Agriculture and Rural Development: -** These loans are granted by the National Bank for Agriculture and Rural Development for the Primary Agriculture Credit Societies. During the year, loan amounting to ₹ 849.99 crore was obtained by the State Government from this bank, and an amount of ₹ 638.00 crore was repaid during the year. The balance outstanding at the end of the year is ₹ 3,852.21 crore.
- (d) Compensation and other Bonds: -** This loan was obtained by State Government on account of Himachal Pradesh Special Bonds under UDAY. During the year, an amount of ₹ 289.05 crore was repaid. The balance outstanding at the end of the year is ₹ 2,023.35 crore.
- (e) Loans from National Cooperative Development Corporation: -** These loans are granted by the National Cooperative Development Corporation to the State Government. During the year an amount of ₹ Nil crore was obtained and ₹ 25.10 crore was repaid. The balance outstanding at the end of the year is ₹ 50.02 crore.
- (f) Loans from other Institutions: -** This loan has been granted by UIDF to the State Government. During the year an amount of ₹ 16.78 crore was obtained and amount of ₹ NIL crore was repaid. The balance outstanding at the end of the year is ₹ 16.78 crore.
- (g) Ways and Means Advances from the Reserve Bank of India: -** Ways and Means Advances are taken from the Reserve Bank of India to make good the deficiency in the minimum cash balance i.e., ₹ 0.55 crore which the State Government is required to maintain with the Reserve Bank of India. An amount of ₹ 11,267.83 crore Ways and Means Advances and ₹ 4,606.87 crore Overdraft was obtained and ₹ 10,490.83 crore and ₹ 3,731.45 crore was repaid during the year 2024-25 respectively.

6. STATEMENT OF BORROWINGS AND OTHER LIABILITIES
EXPLANATORY NOTES

4 Service of Debt:-

Interest on debt and other obligations - The outstanding gross debt and other obligations and the total net amount of interest charges met from revenue during 2023-24 and 2024-25 are shown as below:-

	2024-25	2023-24	Net increase(+)/ decrease(-) during the year 2024-25
			(₹ in crore)
(i) Gross Debt and other obligations outstanding at the end of the year			
(a) Public Debt and Small Savings, Provident Funds etc.	96,421.92	89,706.69	(+),6,715.23
(b) Other Obligations	6,909.98	5,926.25	(+),983.73
Total (i)	1,03,331.90*	95,632.94	(+),7,698.95
(ii) Interest paid by Government			
(a) On Public Debt and Small Savings, Provident Funds etc.	6,183.29	5,594.33	(+),588.96
(b) Other Obligations	77.63	54.03	(+),23.60
Total (ii)	6,260.92	5,648.36	(+),612.56
(iii) Deduct			
(a) Interest received on loans and advances given by Government	422.40	47.65	(+),374.75
(b) Interest realised on investment of cash balances	9.26	21.43	(-),12.17
Total (iii)	431.66	69.08	(+),362.58
(iv) Net interest charges	5,829.26	5,579.28	(+),249.98
(v) Percentage of gross interest item (ii) to total Revenue Receipts	15.32	14.42	(+),0.90
(vi) Percentage of net interest item (iv) to total Revenue Receipts	14.26	14.24	(+),0.02

Note: The Government also received ₹ 191.04 crore during the year as dividend on investments (Major Head- 0050 page no 68 Vol.-II) in various undertakings.

* Difference in figures is due to rounding-off.

7. STATEMENT OF LOANS AND ADVANCES GIVEN BY THE GOVERNMENT

Section: 1 Summary of Loans and Advances: Loanee group wise

(₹ in crore)

Loanee Group	Balance on 1 April 2024	Disbursements during the year	Repayments during the year	Write-off of irrecoverable loans and advances	Balance on 31 March 2025 (2+3)-(4+5)	Net increase(+)/ decrease(-) during the year 2024-25 (6-2)	Interest payment in arrears
1	2	3	4	5	6	7	8
Social Services							
Municipalities/Municipal Councils/Municipal Corporations	7.57	7.57	...	*
Urban Development Authorities	1.06	1.06	...	*
Housing Boards	4.09	...	0.06	...	4.03	(-)0.06	*
Statutory Corporations	6.43	6.43	...	*
Others	11.21	11.21	...	*
Total - Social Services	30.36	...	0.06	...	30.30	(-)0.06	*
Economic Services							
Panchayati Raj Institutions	0.04	0.04	...	*
Statutory Corporations	7,929.66	27.40	154.28	...	7,802.78	(-)126.88	*
Cooperative Societies/Cooperative Corporations/Banks	45.48	...	24.26	...	21.22	(-)24.26	*
Others	96.69	...	0.01	...	96.68	(-)0.01	*
Total - Economic Services	8,071.87	27.40	178.55	...	7,920.72	(-)151.15	*
Govt. Servant and Miscellaneous purposes							
Government Servant	28.93	6.85	6.01	...	29.77	(+)0.84	*
Miscellaneous purposes	1.02	1.02	...	*
Total - Govt. Servant and Miscellaneous purposes	29.95	6.85	6.01	...	30.79	(+)0.84	*
Total	8,132.18	34.25	184.62	...	7,981.81**	(-)150.37	*

*Information not furnished by the State Government.

** Difference in figures as on page no.28 is due to rounding-off.

Note: For details, refer section 1 of Detailed Statement of Loans and Advances made by the State Govt. (page no. 248 to 252 Vol - II)

7. STATEMENT OF LOANS AND ADVANCES GIVEN BY THE GOVERNMENT

Section: 1 Summary of Loans and Advances: Loanee group wise

Following are the cases of a loan having been sanctioned as 'loan in perpetuity'

(₹ in crore)

Loanee entity	Year of sanction		Sanction Order No.		Amount	Rate of Interest	
Loans to Himachal Pradesh Horticultural Produce Marketing & Processing Corporation Limited (HPMC)	2011-12		HTC-F(11)3/2011		7.00	Interest Free	
	2012-13		HTC-F(1)3/2010-Vol-II		5.00	Interest Free	
	2017-18		HTC-F(11)-1/2013		8.00	Interest Free	
Section: 2 Summary of Loans and Advances: Sector wise							
Sector	Balance on 1 April 2024	Disbursements during the year	Repayments during the year	Write-off of irrecoverable loans and advances	Balance on 31 March 2025 (2+3)-(4+5)	Net increase(+)/ decrease(-) during the year 2024-25 (6-2)	Interest payment in arrears
1	2	3	4	5	6	7	8
Social Services	30.36	...	0.07	...	30.29	(-)0.07	...
Economic Services	8,071.86	27.40	178.56	...	7,920.70	(-)151.16	...
Other Services	29.95	6.85	6.01	...	30.79	(+)0.84	...
Total:	8,132.17	34.25	184.64	...	7,981.78*	(-)150.39	...

* Difference of ₹ 0.01 crore between rounded off grand total and corresponding rounded off absolute figure.

7. STATEMENT OF LOANS AND ADVANCES GIVEN BY THE GOVERNMENT

Section: 3 Summary of repayments in arrears from loanee entities

(₹ in crore)

Loanee - entity	Amount of arrears as on 31 March 2025			Earliest period to which arrears relate	Total loans outstanding against the entity on 31 March 2025
	Principal	Interest *	Total		
1	2	3	4	5	6
Municipalities/Municipal Councils/Municipal Corporations	0.57	...	0.57	2001-02	7.57
Housing Boards	1.16	...	1.16	2009-10	1.16
H.P.M.C	14.54	...	14.54	2015-16	60.09
H.P Krishi Vishavidyala	5.61	...	5.61	1987-88	5.61
Himachal Pradesh State Electricity Board Ltd.	74.75	...	74.75	1987-88	2,983.15
General Financial Institution	0.10	...	0.10	1985-86	0.10
Total :	96.73	...	96.73		3,057.68

*Information not furnished by the State Government.

8. STATEMENT OF INVESTMENTS OF THE GOVERNMENT

Comparative summary of Government Investment in the share capital and debentures of different concerns for 2023-24 and 2024-25.

(₹ in crore)

Name of the concern	2024-25			2023-24		
	Number of concerns	Investment at the end of the year	Dividend/interest received during the year	Number of concerns	Investment at the end of the year	Dividend/interest received during the year
1. Statutory Corporations/Boards	6	2,797.64	...	6	2,290.01	...
2. Government Companies	27	2,292.85	0.49	26	2,084.19	3.81
3. Other Joint Stock Companies and Partnerships						
(i) Central Govt. Companies	1	1,098.14	189.90	1	1,098.14	186.74
(ii) Other Companies	13	0.10	...	13	0.10	0.02
Total - Other Joint Stock Companies and Partnerships	14	1,098.24	189.90	14	1,098.24	186.76
4. Cooperative Bank	9	13.37	0.10	9	13.37	0.12
5. Cooperative Institutions and Local Bodies						
(i) Cooperative Societies	15	36.98	0.55	15	38.42	0.48
Total-	71	6,239.08	191.04	70	5,524.23	191.17

Source: State Government

**9. STATEMENT OF GUARANTEES GIVEN BY THE GOVERNMENT
SECTOR-WISE GUARANTEE**

(₹ in crore)

Sector (No. of guarantees with in bracket)	Maximum amount guaranteed as on 31st March 2025 *	Outstanding at the beginning of the year		Additions during the year		Deletions (Other than invoked during the year)		Invoked during the year		Outstanding at the end of the year		Guarantee Commission or Fee**		Other Material details
		Principal	Interest	Principal	Interest	Principal	Interest	Discharged	Not discharged	Principal	Interest	Receivable	Received	
Power (15)	3,035.67	1,153.58	...	953.20	...	748.00	1,358.78	...	5.79	...	
Cooperative Banks (1)	400.00	257.94	...	78.00	8.43	62.34	8.43	273.61	
Roads and Transport (11)	504.00	233.75	121.22	70.80	121.22	162.95	
State Financial Corporations (2)	30.00	6.62	...	5.00	...	5.44	6.18	
Other Infrastructure (1)	10.00	7.60	0.64	0.87	0.64	6.73	
Any Other (12)	135.00	85.32	...	20.92	0.41	18.89	0.41	87.34	0.99***	
Total - (42)	4,114.67	1,744.81	...	1,057.12	130.70	906.34	130.70	1,895.59	...	5.79	0.99***	

* This figure represents the maximum ceiling amount guaranteed and does not include any interest amount.

**It includes guarantee fees and commitment charges also.

***Deposited by the HIMUDA as per information given by the State Govt.

10. STATEMENT OF GRANTS-IN-AID GIVEN BY THE GOVERNMENT

(i) Grants-in-Aid paid in cash

(₹ in crore)

Name/ Category of the Grantees	Total Funds Released as Grants-in-Aid				Funds Allocated for Creation of Capital Assets out of Total Funds Released under Column No. 2			
	2024-25			2023-24	2024-25			2023-24
	State Fund Expenditure (a)	Central Assistance (including CSS/CS) (b)	Total (a+b)	[Total of State Fund Expenditure and Central Assistance (including CSS/CS)]	State Fund Expenditure (a)	Central Assistance (including CSS/CS) (b)	Total (a+b)	[Total of State Fund Expenditure and Central Assistance (including CSS/CS)]
1	2	3	4	5	6	7	8	9
6 Others (not covered by items 1 to 5 above)	1,241.81	2,142.40	3,384.21	2,253.11	151.97	114.47	266.44	100.67
(i) Elementary Education	100.11	607.94	708.05	441.19
(ii) Secondary Education	51.42	278.31	329.73	281.75
(iii) Higher Education	48.76	...	48.76	36.51	0.14	...	0.14	0.66
(iv) Forests	200.25	...	200.25	115.72	5.16	...	5.16	4.70
(v) Social Welfare	164.83	859.85	1,024.68	599.11	2.98	94.92	97.90	50.34
(vi) Miscellaneous	676.44	396.30	1,072.74	778.83	143.69	19.55	163.24	44.97
Total-	3,564.49	2,666.54	6,231.03	5,092.20	995.35	187.87	1,183.22*	911.06

* Difference of ₹ 0.02 crore between rounded off grand total and corresponding rounded off absolute figure.

10. STATEMENT OF GRANTS-IN-AID GIVEN BY THE GOVERNMENT
(ii) Grants-in-Aid given in kind

(₹ in crore)

Name/ Category of the Grantees	Total Funds Released as Grants-in-Aid	Value of Grants-in-aid in kind being Capital Asset in Nature
1	2	3
	2024-25	2024-25
1 Panchayati Raj Institutions		
(i) Zila Parishads	--	--
(ii) Panchayat Samitis	--	--
(iii) Gram Panchayats	--	--
2 Urban Local Bodies		
(i) Municipal Corporations	--	--
(ii) Municipalities/Municipal Councils	--	--
(iii) Others	--	--
3 Public Sector Undertakings		
(i) Government Companies	--	--
(ii) Statutory Corporations	--	--
4 Autonomous Bodies		
(i) Universities	--	--
(ii) Development Authorities	--	--
(iii) Cooperative Institutions	--	--
(iv) Others	--	--
5 Non-Government Organisations		
Total-	--	--

Note : Information not furnished by the State Government.

11. STATEMENT OF VOTED AND CHARGED EXPENDITURE

Particulars	Actuals					
	2024-25			2023-24		
	Charged	Voted	Total	Charged	Voted	Total
						(₹ in crore)
Expenditure Heads (Revenue Account)	6,592.90	41,084.06	47,676.96	5,739.12	38,992.51	44,731.63
Expenditure Heads (Capital Account)	24.35	5,932.49	5,956.84	12.94	5,616.84	5,629.78
Disbursements under Public Debt, Loans and Advances, Inter State Settlement and Transfer to Contingency Fund (a)	18,168.81	34.25	18,203.06	7,895.87	106.96	8,002.83
Total	24,786.06	47,050.80	71,836.86	13,647.93	44,716.31	58,364.24
(a) The figures have been arrived as follows -						
E. Public Debt						
Internal Debt of the State Government	18,091.38	...	18,091.38	7,788.24	...	7,788.24
Loans and Advances from the Central Government	77.43	...	77.43	107.63	...	107.63
F. Loans and Advances*						
Loans for Economic Services	...	27.40	27.40	...	98.35	98.35
Loans to Government Servants etc.	...	6.85	6.85	...	8.60	8.60
G. Inter-State Settlement						
Inter-State Settlement
H. Transfer to Contingency Fund						
Transfer to Contingency Fund
Total (a)	18,168.81	34.25	18,203.06	7,895.87	106.95	8,002.82

(i) The percentage of charged expenditure and voted expenditure to total expenditures during 2023-24 and 2024-25 was as under:-

Year	Percentage of total expenditure	
	Charged	Voted
2023-24	23.38	76.62
2024-25	34.50	65.50

* Detailed account is given in Statement No.18

**12. STATEMENT ON SOURCES AND APPLICATION
OF FUNDS FOR EXPENDITURE OTHER THAN ON REVENUE ACCOUNT**

Heads	On 1 April 2024	During the year 2024-25	On 31 March 2025
1	2	3	4
			(₹ in crore)
CAPITAL AND OTHER EXPENDITURE-			
Gross Capital Expenditure			
General Services			
Capital Outlay on other Fiscal Services	0.08	...	0.08
Capital Outlay on Police	765.67	49.44	815.11
Capital Outlay on Stationery and Printing	6.59	...	6.59
Capital Outlay on Public Works	2,190.65	255.73	2,446.38
Capital Outlay on other Administration Services	134.93	23.18	158.11
Total - General Services	3,097.92	328.35	3,426.27
Social Services			
Education, Sports, Art and Culture	4,986.44	340.06	5,326.50
Health and Family Welfare	3,596.26	583.93	4,180.19
Water Supply, Sanitation, Housing and Urban Development	11,942.87	894.25	12,837.12
Information and Broadcasting	12.24	0.80	13.04
Welfare of Scheduled Castes, Scheduled Tribes, other Backward Classes and Minorities	232.55	11.15	243.70
Social Welfare and Nutrition	182.25	88.09	270.34
Other Social Services	18.36	...	18.36
Total - Social Services	20,970.97	1,918.28	22,889.25
Economic Services			
Agriculture and Allied Activities	2,773.53	89.66	2,863.19
Rural Development	170.96	30.25	201.21
Irrigation and Flood Control	7,037.87	388.53	7,426.40
Energy	3,575.87	138.15	3,714.02
Industry and Minerals	956.46	89.28	1,045.74

**12. STATEMENT ON SOURCES AND APPLICATION
OF FUNDS FOR EXPENDITURE OTHER THAN ON REVENUE ACCOUNT**

Heads	On 1 April 2024	During the year 2024-25	On 31 March 2025
1	2	3	4
(₹ in crore)			
CAPITAL AND OTHER EXPENDITURE - Concl'd.			
Gross Capital Expenditure - Concl'd.			
Economic Services - (Concl'd.)			
Transport	27,842.89	3,023.24	30,866.13
General Economic Services	2,774.09	358.35	3,132.44
Total - Economic Services	45,131.67	4,117.46	49,249.13
Total - Gross Capital Expenditure	69,200.56	6,364.09	75,564.65
Recovery Capital Expenditure			
Social Services			
Education, Sports, Art and Culture	0.24	...	0.24
Water Supply, Sanitation, Housing and Urban Development	0.75	...	0.75
Total - Social Services	0.99	...	0.99
Economic Services			
Agriculture and Allied Activities	1,442.77	47.53	1,490.30
Irrigation and Flood Control	567.69	...	567.69
Industry and Minerals	0.15	...	0.15
Transport	70.80	359.75	430.55
Total - Economic Services	2,081.41	407.28	2,488.69
Total - Recovery Capital Expenditure	2,082.40	407.28	2,489.68
Total -Net Capital Expenditure	67,118.16	5,956.81	73,074.97
LOANS AND ADVANCES-			
Loans and Advances for various services			
Social Services			
Loans for Education, Sports, Art and Culture	10.15	...	10.15
Loans for Water Supply and Sanitation
Loans for Housing	8.32	(-)0.07	8.25
Loans for Urban Development	7.58	...	7.58

**12. STATEMENT ON SOURCES AND APPLICATION
OF FUNDS FOR EXPENDITURE OTHER THAN ON REVENUE ACCOUNT**

Heads	On 1 April 2024	During the year 2024-25	On 31 March 2025
1	2	3	4
			(₹ in crore)
LOANS AND ADVANCES -Concl.			
Loans and Advances for various services -Contd.			
Social Services -Concl.			
Loans for Welfare of Scheduled Castes, Scheduled Tribes, other Backward Classes and Minorities	3.25	...	3.25
Loans for Social Security and Welfare	0.08	...	0.08
Loans for Relief on account of Natural Calamities	0.99	...	0.99
Total - Social Services	30.37	(-0.07)	30.30
Economic Services			
Loans for Crop Husbandry	93.06	...	93.06
Loans for Food Storage and Warehousing	1.06		1.06
Loans for Cooperation	45.62	(-)24.26	21.36
Loans for Other Agricultural Programmes	1.63	...	1.63
Loans for Other Rural Development Programmes	0.18	...	0.18
Loans for Power Projects	7,841.72	(-)126.89	7,714.83
Loans for General Financial and Trading Institutions	0.10	...	0.10
Loans for Village and Small Industries	3.87	(-)0.01	3.86
Other Loans to Industries and Minerals	84.61	...	84.61
Loans to Government Servants etc.	28.94	0.84	29.78
Miscellaneous Loans	1.02	...	1.02
Total - Economic Services	8,101.81	(-150.32)	7,951.49
Total - Loans and Advances	8,132.18	(-150.39)	7,981.79
Transfer to Contingency Fund
Total - Capital and Other Expenditure	75,250.34	5,806.42	81,056.76
Deduct:- Contribution from Contingency Fund
Net - Capital and Other Expenditure	75,250.34	5,806.42	81,056.76

**12. STATEMENT ON SOURCES AND APPLICATION
OF FUNDS FOR EXPENDITURE OTHER THAN ON REVENUE ACCOUNT**

Heads	On 1 April 2024	During the year 2024-25	On 31 March 2025
1	2	3	4
			(₹ in crore)
Principal Sources of Funds -			
Debt -			
Internal Debt of the State Government	61,439.29	6,009.09	67,448.38
Loans and Advances from the Central Government	5,661.89*	2,444.26	8,106.15
Small Savings, Provident Funds etc.	19,337.58	1,529.81	20,867.39
Total - Debt	86,438.76	9,983.16	96,421.92
Other Obligations			
Contingency Fund	5.00	...	5.00
Reserve Funds	2,279.77	599.67	2,879.44
Deposits and Advances	3,645.97	384.06	4,030.03
Suspense and Miscellaneous (other than amount closed to Government Account & Cash Balances Investment Account)**	265.09	4.67	269.76
Remittances	620.25	183.98	804.23
Total - Other Obligations	6,816.08	1,172.38	7,988.46
Total - Debt and Other Obligations	93,254.84	11,155.54	1,04,410.38
Other Receipts -			
Deduct - Cash Balance	42.44	2.30	44.74
Deduct - Investment**	1,457.81	(-)1,457.81	...
Total -	91,754.59	12,611.05	1,04,365.64
Deduct: Revenue Deficit/Add: Revenue Surplus		(-)6,804.60	
Add - Amount closed to Government Account
Net - Provision of Funds		5,806.45	
Progressive Net Capital and Other Expenditure			81,056.76
Progressive Principal Source of Fund			1,04,365.64
Difference			(-)23,308.88***

* Differs from last year closing balance of by ₹ 3,267.94 crore due to prior period adjustment on account of back to back loan of GST Compensation.

**Differs from last year closing balance due to depiction of investment figure only under MH 8673 & remaining in Suspense & Miscellaneous.

*** The difference of (-)₹ 23,308.88 crore is explained at next page.

**12. STATEMENT ON SOURCES AND APPLICATION
OF FUNDS FOR EXPENDITURE OTHER THAN ON REVENUE ACCOUNT**

Heads	On 1 April 2024	During the year 2024-25	On 31 March 2025
1	2	3	4
			(₹ in crore)
1. Revenue Deficit:-			
(i) Revenue Deficit upto 31 March 2024		(-)19,820.77	
(ii) Current year deficit(-)/surplus(+)		(-)6,804.60	(-)26,625.37
(iii) Capital Receipt upto 31 March 2024		70.36	
(iv) Capital Receipt during the year 2024-25		...	70.36
2. Amount adjusted under:-			
(i) Inter State Settlement		(-)1.43	
(ii) Net Amount adjusted under "7999-Appropriation to Contingency Fund"		(-)5.00	
(iii) Miscellaneous Government Account		(-)7.84	
(iv) Net Amount adjusted through proforma correction		(-)7.50	
(v) Net Amount adjusted through PPA		3,267.94	3,246.17
Net Total			(-)23,308.84*

* Difference of ₹ 0.04 crore is due to rounding.

13. SUMMARY OF BALANCES UNDER CONSOLIDATED FUND, CONTINGENCY FUND AND PUBLIC ACCOUNT

A. The following is a summary of the balances as on 31 March 2025 :-

Debit balance	Sector of the General Account	Name of Account	Credit balance
		Consolidated Fund	(₹ in crore)
96,383.84(a)	A to D,G,H and Part of L (Major Head 8680 only)	Government Account	
	E	Public Debt	
		(i) Internal Debt of the State Government	67,448.38
		(ii) Loan and Advances from the Central Government	8106.15*
7981.79*	F	Loans and Advances	
		Contingency Fund	
		Contingency Fund	5.00
		Public Account	
	I	Small Savings, Provident Funds, etc.	20,867.39
	J	Reserve Funds	
		(i) Reserve Funds bearing Interest	2,739.21
		(ii) Reserve Funds not bearing Interest	140.23
		Gross Balance	
	K	Deposits and Advances	
		(i) Deposits bearing Interest	16.60
		(ii) Deposits not bearing Interest	4,013.95
		(iii) Advances	(-)0.51
0.19	L	Suspense and Miscellaneous	
		(i) Investments	
		(ii) Other Items (Net)	269.95
	M	Remittances	
		(i) Cash Remittances and adjustments between officers rendering accounts to the same Accounts Officers	804.14
		(ii) Inter Government Adjustment Account	0.08
44.74(b)	N	Cash Balance	
0.01		On account of rounding	
1,04,410.57		Total	1,04,410.57

(a) Please see 'B' on page no. 44 (Vol.-I) to understand how this figure is arrived at.

(b) There was a difference between the figures reflected in the accounts and that intimated by the Reserve Bank of India regarding "Deposits with Reserve Bank" included in the Cash Balance. The discrepancy is under reconciliation. See also footnote (a) on page 279 (Vol.-II).

* Differs from figures in Statements 6 and 7 due to different level of rounding-off.

13. SUMMARY OF BALANCES UNDER CONSOLIDATED FUND, CONTINGENCY FUND AND PUBLIC ACCOUNT

B. Government Account: Under the system of book-keeping followed in Government accounts, the amount booked under Revenue, Capital and other transactions of Government, the balances of which are not carried forward from year to year in the accounts, are closed to a single head called "Government Account". The balance under this head represents the cumulative result of all such transactions.

To this the balances under Public Debt, Loans and Advances, Small Savings, Provident Funds, Reserve Funds, Deposits and Advances, Suspense and Miscellaneous (Other than Miscellaneous Government Account), Remittances and Contingency Fund, etc. are added and the closing cash balance at the end of the year is to be worked out and proved.

The other headings in the summary take into account the balances under all accounts heads in Government books in regard to which Government has a liability to repay the money received or has a claim to recover the amounts paid and also heads of account opened in the books for adjustment of remittance transactions.

It must be understood that these balances can not be regarded as a complete record of the financial position of the Government as it does not take into account all the physical assets of the State, such as lands, buildings, communication, etc. nor any accrued dues or outstanding liabilities which are not brought to account under the cash basis of accounting followed by Government.

The net amount at the debit of Government Account at the end of the year has been arrived at as under:-

		(₹ in crore)
Dr.	Details	Cr.
86,890.34	A. Amount at the Debit of Government Account on 1 April 2024	
	B. Receipt Heads (Revenue Account)	40,872.35
	C. Receipt Heads (Capital Account)	...
47,676.96	D. Expenditure Heads (Revenue Account)	
5,956.83	E. Expenditure Heads (Capital Account)	
	F. Suspense and Miscellaneous (Miscellaneous Government Accounts)	...
	G. InterState Settlement	...
	Prior period Adjustment of Back to Back loan	3,267.94
	H. Amount at the debit of Government Account on 31 March 2025	96,383.84
	On account of rounding	...
1,40,524.13	Total	1,40,524.13

Note:- In a number of cases, there are unreconciled differences in the closing balance as reported in the statement of 'Receipts, Disbursements and Contingency Fund and Public Account' (Statement no. 21) and that shown in separate registers or other records maintained in the Account office/Departmental offices for the purpose. Steps are being taken to settle the discrepancies.

The balances are communicated to the officers concerned every year for verification and acceptance thereof. In a large number of cases such acceptances have not been received.

13. SUMMARY OF BALANCES UNDER CONSOLIDATED FUND, CONTINGENCY FUND AND PUBLIC ACCOUNT - Concl'd.

Annexure								
Prior Period Adjustment in Compliance With IGAS-4								
(₹ in crore)								
Sl. No.	Type of Correction	Head of Accounts	Carry forward 'Opening balance as on 01.04.2024'	Year of Prior Period Adjustment	Amount of Correction	Reason of Correction	Opening balance as on 01.04.2024 after correction	Remarks, if any
1	2	3	4	5	6	7	8	9
1	Proforma Correction (Para 7.13 of Account Code for Accountants General)	6004-02-101-10	1,717.00	2023-24	1,248.36	Repayment of Back to Back loan in lieu of GST Compensation paid by the Central Government from GST Compensation Fund in the Public Account of India	NIL	Since, Back to back loan was not repayable by the State Government to the Central Government, its impact has been reflected in the calculation of Government Account as on 31 March 2025 in Statement 13.
				2024-25	468.64			
		6004-09-101-03	2,695.22	2024-25	1,550.94		1,144.28	
Total			4,412.22		3,267.94		1,144.28	

Notes to Finance Accounts for the year 2024-25

1. Summary of Significant Accounting Policies:

(i) Reporting Entity:

These accounts present the transactions of the Government of Himachal Pradesh. The accounts of receipts and disbursement of the Government of Himachal Pradesh have been compiled based on the initial accounts rendered by 19 Treasuries (including one SNA-SPARSH Treasury created), 96 Public Works Divisions {77 Building and Roads (including three B&R Divisions created), 08 National Highways, 06 Mechanical, 05 Electrical}, 72 Jal Shakti Divisions (including three Jal Shakti Divisions created) and Advices of the Reserve Bank of India. No accounts have been excluded at the end of the year.

(ii) Reporting Period:

The reporting period of these accounts is 1 April 2024 to 31 March 2025.

(iii) Reporting Currency:

The accounts of the Government of Himachal Pradesh are reported in Indian Rupees (₹).

(iv) Form of Accounts:

Under Article 150 of the Constitution of India, the accounts of the Union and of the States are kept in such form as the President may, on the advice of the Comptroller and Auditor General of India, prescribe. The word "form" used in Article 150 has a comprehensive meaning so as to include the prescription not only of the broad form in which the accounts are to be kept but also the basis for selecting appropriate heads of accounts under which the transactions are to be classified, which forms the chart of accounts.

(v) Basis of Budget and Financial Reporting:

As per the provisions of Article 202 of the Constitution of India, a statement of estimated receipts and expenditure, the Annual Financial Statement (called Budget) for a financial year, is presented to the legislature in form of grants/appropriations before the commencement of the financial year. Budget is presented on gross basis without the recoveries and receipts which are otherwise permitted to be set off in reduction of expenditure. All grants / appropriations relating to heads of budget and accounts, whose balances are not carried forward, lapse at the end of the financial year.

Budget and Accounts: Both budget and accounts of the State follow the same accounting period, cash basis of accounting and uniform basis of classification. The accounts are classified as per the List of Major and Minor Heads (LMMH) to the level of Minor Heads as notified by the Controller General of Accounts in consultation with the Comptroller &

Auditor General of India. Classification followed below Minor Heads is as agreed to by the Office of the Principal Accountant General (A&E) in each state.

A separate budget comparison statement is presented as Appropriation Accounts, which represents actual disbursements in comparison to the grants/appropriations. The Appropriation Accounts are presented on gross basis and a reconciliation Statement is included in the Appropriation Accounts to reconcile the net figure in the Finance Accounts.

Cash basis: The accounts represent the actual cash receipts and disbursements during the reporting period with the exception of such book adjustments which are authorised. Receipts and disbursements in the Finance Accounts are on net basis; net of recoveries, deductions and refunds.

Book Adjustments: Book adjustments are non-cash transactions that appear in the accounts as adjustments/settlements. Some of these transactions take place at the level of the account rendering units, e.g., treasuries, divisions, etc., for adjustments of deductions and recoveries from salaries to Revenue Receipts/Loans/Public Account, 'nil' bills for transfer of moneys between the Consolidated Fund and Public Account, etc.

Book adjustments are also carried out at Office of the Principal Accountant General (A&E). These, amongst others, include booking for creation of and contribution to funds in Public Account by debit to Consolidated Fund (e.g., State Disaster Response Fund, Central Road and Infrastructure Fund, Sinking Fund, etc.), crediting Reserve Funds/Deposit heads of accounts in Public Account by debiting Consolidated Fund; annual adjustment of interest on General Provident Fund and State Government Group Insurance Scheme by debiting Major Head 2049-Interest Payments and crediting relevant Major Heads in Public Account; adjusting Debt waiver under the scheme of Government of India based on the recommendations of the Central Finance Commissions, recoupment of Contingency Fund, etc.

Classification between Capital and Revenue Expenditure: Significant expenditure incurred with the object of acquiring tangible assets of a permanent nature (for use in the Government establishment and not for sale in the ordinary course of business) or enhancing the utility of existing assets, are broadly defined as Capital expenditure. Subsequent charges on maintenance, repair, upkeep and working expenses, which are required to maintain the assets in a running order as also all other expenses incurred for the day to day running of the establishment and administrative expenses are classified as Revenue expenditure. Capital and Revenue expenditure are shown separately in the Accounts.

Physical and Financial Assets and Liabilities: Physical Assets and Financial Assets (such as, investments, loans and advances made by the Government, etc.), as well as Liabilities, such as, debt, etc., are measured at historical cost. Physical Assets are not depreciated, and financial assets are not amortized. Losses in Physical Assets at the end of their life are also not expensed or recognized.

Grants-in-aid: In compliance with IGAS 2 - Accounting and Classification of Grants-in-aid, grants-in-aid in cash is recognized as revenue expenditure at the time of disbursement even if it involves creation of assets by the grantee, except in cases specifically authorised by the President on the advice of the Comptroller and Auditor General of India. All grants received are recognized as revenue receipts. Details for meeting the requirements of accounting and classification of Grants-in-aid given by the State Government are depicted in Statement 10 and Appendix III of the Finance Accounts. Detailed information in respect of Grants-in-aid given in kind is to be disclosed, as provided by the State Government.

Loans and Advances: In compliance with IGAS 3 - Loans and Advances made by Government, details of loans and advances made by the State Government are disclosed in Statements 7 and 18 of the Finance Accounts. The closing balances depicted in Statements as on 31 March 2025 are as provided by the State Government.

Prior Period Adjustments: In compliance with IGAS 4 - Prior Period Adjustment, the State Government carries out adjustments as per the existing procedure and discloses such information, which pertains to the prior period errors and covers entries requiring Prior Period Adjustments arising out of changes in Government decisions, which may impact current balances and progressive amounts during the earlier years for which accounts have been closed.

Retirement benefits: Retirement benefits disbursed during the reporting period as per the Pay-As-You-Go basis have been reflected in the accounts, but the future pension liability of the Government towards employees under the Old Pension scheme, i.e., the liability towards payment of retirement benefits for the past and the present service of its employees is not included in the accounts under Major Head-2071. The estimated future pension liability of the Government towards employees is to be reflected in Appendix-XII.

(vi) Rounding off:

The statements present figures that are rounded off to ₹ in lakh and ₹ in crore as depicted at the top of the respective statements. Difference wherever occurring in relation to absolute figures as well as rounded figures across different Statements, is due to rounding-off of the figures.

(vii) Cash Balance:

Cash balance as reported in the accounts is the balance of the State at the end of the 31 March of a year as recorded in the Account of the State Government with the Central Accounts Section of the Reserve Bank of India. The cash balance reflects the balance after cash transactions involving Consolidated Fund, the Contingency Fund and Public Account of the State for the year. Book adjustments do not affect the cash balance as they are non-cash transactions. Cash balance reported in the Finance Accounts is subject to reconciliation with the books of the Reserve Bank of India.

(viii) Disclosure of Contingent & Committed liabilities:

IGAS 1: 'Guarantees given by the Governments' The sector-wise details of guarantees are disclosed in Statement 9 and sector and class-wise details are depicted in Statement 20 of the Finance Accounts as per the details made available by the State Government.

The Government does not follow commitment accounting and the commitments are neither recorded nor the liability against commitment recognized in accounts. However, it has to disclose its future commitments under Appendix XII of the Finance Accounts.

(ix) Pass-through transactions:

Pass-through transactions in the nature of receipts collected by the State but required to be transferred to other entity are disclosed in the Notes to Finance Accounts. These may include transfer of 10 *per cent* of the collection of the year in the State CAMPA Fund to the National Fund on annual basis, transfer of two per cent of the royalty to the National Mineral Exploration Trust (NMET), labour cess collected and kept in Government Account and transferred to the 'Building and Other Construction Workers' Welfare Board, transfer of Central share received by the State on Centrally Sponsored Schemes, Central Sector Schemes to Single Nodal Agency, transfer of NPS contributions from the designated major head in Public Account to designated fund manager etc.

2. Compliance with the Accounting Framework:**(i) Freezing of accounts by treasuries after closing monthly accounts:**

As per the existing practice, accounts once closed by the State and rendered to the Office of Principal Accountant General (A&E), should not be opened for any changes, as this would mis-represent the monthly account. Non-freezing of accounts by treasuries after closing monthly accounts may give scope for data modification after submission of monthly accounts to Principal Accountant General (A&E) office and may lead to mismatch of figures/data between PAG office and State Government. In Himachal Pradesh, there is

provision for freezing of monthly accounts in the Integrated Financial Management System after closure of monthly accounts and sending them to the office of Principal Accountant General (A&E).

(ii) Operation of unauthorized heads:

No such instance has been noticed during the Financial Year 2024-25.

(iii) Opening of New Sub Heads/Detailed Heads of Accounts without advice:

According to Article 150 of the Constitution of India, the accounts of the State are to be kept in the form as advised by the Comptroller and Auditor General of India. During the year 2024-25, the State Government of Himachal Pradesh has not opened any new Sub Heads in the budget, without seeking the advice or informing the Principal Accountant General (A&E) office.

3. Consolidated Fund:

(i) Goods and Services Tax:

Goods and Services Tax (GST) was introduced with effect from 1 July 2017. During the year 2024-25, the State GST collection was ₹ 5,816.61 crore compared to ₹ 5,339.89 crore in 2023-24, registering an increase of ₹ 476.72 crore (8.93 per cent). In addition, the State received ₹ 3,119.54 crore as its share of net proceeds assigned to the State under Central Goods and Services Tax. The total receipts under GST were ₹ 8,936.15 crore. The State received non-debt compensation of ₹ 50.93 crore as Revenue receipt on account of loss of revenue arising out of implementation of GST during 2024-25.

The relevant figures are available in Statement No. 14 of the Finance Accounts.

(ii) Misclassification/ Incorrect operation of Object Heads:

During the year 2024-25, the Government of Himachal Pradesh has budgeted and booked an expenditure of ₹ 2,666.97 crore under Object Head '20- Other Charges'. Out of this amount of ₹ 2,666.97 crore, vouchers pertaining to ₹ 1,747.60 crore were test checked, wherein it was observed that ₹ 691.97 crore pertaining to transfer to Reserve Funds and ₹ 127.56 crore pertaining to Compensation on Court orders were booked under Object Head '20- Other Charges' instead of Object Head '49- Inter Account Transfer' and '29- Compensations' respectively. The practice of budgeting and booking of expenditure under omnibus Object Head '20- Other Charges' instead of specific Object Head affects the transparency of nature of expenditure.

(iii) Reconciliation between CCOs and Principal Accountant General (A&E) of Receipts and Expenditure and Loans & Advances Given by the State:

All Controlling Officers are required (as per the Rule 119 (2) Himachal Pradesh Treasury Rule 2017) to reconcile receipt and expenditure of the Government with the figures accounted for by the Principal Accountant General (A&E), Himachal Pradesh. During the year 2024-25, revenue receipt amounting to ₹ 38,895.59 crore (95.16 *per cent* of total revenue receipts) and revenue expenditure amounting to ₹ 33,932.71 crore (71.17 *per cent* of total revenue expenditure) and capital expenditure amounting to ₹ 4,898.59 crore (82.23 *per cent* of total capital expenditure) were reconciled by the State Government. Loans and Advances given by the State Government amounting to ₹ 34.25 crore (100 *per cent* of total loans and advances given by the State Government) were reconciled.

In comparison, during the last year 2023-24, revenue receipts amounting to ₹ 39,173.05 crore (100 *per cent* of total revenue receipts) and revenue expenditure amounting to ₹ 44,731.63 crore (100 *per cent* of total revenue expenditure) and capital expenditure amounting to ₹ 5,629.79 crore (100 *per cent* of total capital expenditure) were reconciled by the State Government. During the last year, Loans and Advances given by the State Government amounting to ₹ 106.95 crore (100 *per cent* of total loans and advances given by the State Government) were reconciled.

(iv) Bookings under Minor Head 800-Other Expenditure and 800-Other Receipts:

The Minor Head 800-Other Expenditure/800-Other Receipts is to be operated only when the appropriate minor head has not been provided in the accounts. Routine operation of Minor Head 800 should be discouraged since it renders the accounts opaque.

During the year 2024-25, ₹ 1,187.76 crore under 21 Major Heads of accounts, constituting 2.21 *per cent* of the total Revenue and Capital expenditure¹ (₹ 53,633.78 crore) was classified under the Minor Head 800-Other Expenditure in the accounts. During the previous year 2023-24, ₹ 530.09 crore under 19 Major Heads of accounts, constituting 1.05 *per cent* of the total Revenue and Capital expenditure (₹ 50,361.42 crore) was classified under the Minor Head 800-Other Expenditure in the accounts.

Similarly, ₹ 2,682.95 crore under 46 Major Heads of Account, constituting 6.56 *per cent* of the total Revenue Receipts (₹ 40,872.35 crore) was classified under 800-Other Receipts in the accounts. During the previous year, ₹ 2,425.22 crore under 47 Major Heads of Account, constituting 6.19 *per cent* of the total Revenue Receipts (₹ 39,173.05 crore) was classified under 800-Other Receipts in the accounts.

¹ It excludes Loans & Advances and repayment of Public Debt.

This has reference to Statements 14, 15 and 16 of the Finance Accounts.

(v) Transfer of funds to Personal Deposit (PD)/Personal Ledger (PL) Accounts:

The PD accounts enable designated Drawing Officers to incur expenditure for specific purposes pertaining to a scheme.

During the year 2024-25, no amount was transferred to the PD Accounts from Consolidated Fund of the State. In Himachal Pradesh, there are PD Accounts but they are related to sources other than Consolidated Fund of the State, such as Sheriff Petty Account.

(vi) Unadjusted Abstract Contingent (AC) Bills:

Rule 183 (3) (v) of HP Treasury Rules, 2017 envisages that no moneys should be drawn from Government treasury unless it is required for immediate disbursement. In emergent circumstances, Drawing and Disbursing Officers (DDOs) are authorised to draw sums of money through Abstract Contingent (AC) bills. In terms of Rule 187 of HP Treasury Rules 2017, the DDOs are required to present Detailed Countersigned Contingent (DCC) bills containing vouchers in support of final expenditure within the same financial year.

Mechanism for identification of AC bills was established in Himachal Pradesh during the year 2022-23. Total 244 number of AC bills amounting to ₹ 7.19 crore were drawn during the year 2024-25, out of which 07 AC bills amounting to ₹ 0.02 crore (0.28 per cent) were drawn in March 2025. No AC bill remained pending for adjustment at the end of the year.

(vii) Utilisation Certificates (UCs) for Grants-in-Aid not received:

In terms of Rule 157 of Himachal Pradesh Financial Rules 2009, Institutions or Organisations receiving grants shall furnish audited Utilisation Certificates (UCs) to the Government after utilisation of Grants-in-Aid (GIA). Further, as per HP Government F.D. letter No. 1-3/73-Fin (Reg.) dated 28 January 1976, the release of further grant to institutions should not be done, which fail to furnish proof of proper utilisation of the earlier grants within a reasonable time, i.e. one year from the date of issue of the grant. However, this provision has been amended by the State Government w.e.f. 05-12-2024. As per the amendment, the Institutions or Organisations receiving grants shall furnish audited UCs to the Government within six months of utilisation of GIA and it should be utilized within three months of realisation or before the release of next installments, whichever is earlier. To the extent of non-submission of UCs, there is a risk that the amount shown in Finance Accounts may not have reached the beneficiaries.

During the year 2024-25, ₹ 7,887.44 crore pertaining to 22,512 outstanding UCs were due for the period up to 31 March 2025 (GIA bills drawn upto 31 March 2024). Of these, ₹ 4,562.91 crore pertaining to 19,991 outstanding UCs were cleared. The position of outstanding UCs as on 31 March 2025 is given below:

Year*	Number of UCs Outstanding	Amount (₹ in crore)
Upto 2023-24	1,375	1,176.48
2024-25	1,146	2,148.05
Total	2,521 #	3,324.53 #
Year	Number of UCs submitted before due date of submission	...
2024-25	3	38.61

* The year mentioned above relates to "Due year" i.e., after one year of actual withdrawal.

These include 155 outstanding UCs amounting to ₹ 1,200.49 crore related to CSS.

This has reference to the Statement 10 and Appendix III of the Finance Accounts.

(viii) Interest Adjustment:

Government is liable to pay/adjust interest in respect of balances under category J-Reserve Funds (a. Reserve Funds bearing interest) and K-Deposit and Advances (a. Deposits bearing interest), and for this purpose, specific Sub-Major Heads are provided in the List of Major and Minor Heads of Account.

Details of these Funds/Deposits and interests paid by the Government during the year 2024-25 are given below:

(₹ in crore)

Funds/Deposits	Opening Balance on 1 April, 2024	Basis calculation for of interest	Interest due	Interest paid	Interest short paid
Defined Contribution Pension Scheme for Government Employees	16.50	Interest calculated at the rate of 7.10 per cent as per interest payable to General Provident Fund.	1.18	Nil	1.18
State Disaster Response Fund	58.15	Interest calculated at the rate of 8.46 per cent by taking into account the interest rate on overdraft during 2024-25.	14.41	Nil	14.41
State Disaster Mitigation Fund	43.46		7.42	Nil	7.42
Total			23.01	Nil	23.01

Non-payment of the interest amounting to ₹ 23.01 crore has led to understatement of Revenue Expenditure by ₹ 23.01 crore.

This has reference to figures in Statements 15, 21 and 22 of the Finance Accounts.

(ix) Guarantees given by the Government:

In terms of H.P. FRBM Act 2005, amended in 2011, the total outstanding Government Guarantees shall not exceed 40 *per cent* of the State Revenue Receipts in the preceding financial year. During the year, amount guaranteed by the State Government was ₹ 1,057.12 crore. The outstanding guarantees of ₹ 1,895.59 crore as on 31 March 2025, works out to 4.84 *per cent* of the State Revenue Receipts of the year 2023-24 (₹ 39,173.05 crore) and are within the limits prescribed.

As per instruction of Finance Department, Government of Himachal Pradesh, under Rule 168 of Himachal Pradesh Financial Rules (H.P.F.R.) 2009, the Government shall charge one *per cent* guarantee fee and 0.20 *per cent* commitment charge of the guaranteed amount for issuing of the guarantee.

During 2024-25, the State Government received ₹ 0.99 crore from HIMUDA towards guarantee commission, which constituted 0.09 *per cent* of the amount of guarantee given during the year.

The relevant figures are available in Statements 9, 14 and 20 of the Finance Accounts.

(x) Expenditure on Ecology and Environment:

The expenditure incurred by the State Government towards ecology and environment is depicted in the Finance Accounts to the level of Minor Head under various functional head of accounts. During the year 2024-25, the Government of Himachal Pradesh incurred ₹ 866.52 crore against the budget allocation of ₹ 990.86 crore under Major Heads 2402, 2406 and 3435. During the previous year 2023-24, the Government of Himachal Pradesh incurred expenditure of ₹ 715.67 crore against the budget allocation of ₹ 951.41 crore under Major Heads 2402, 2406 and 3435.

This has reference to Statements 15 of the Finance Accounts.

(xi) Expenditure relating to unforeseen/extraordinary events/disaster:

During the year 2024-25, the Government of Himachal Pradesh incurred ₹ 720.48 crore (₹ 1,239.18 crore in previous year) on relief measures relating to unforeseen/extraordinary events under Major Head 2245. This whole amount pertained to Revenue Expenditure.

The Government received ₹ 647.62 crore from the Central Government for this purpose, being grants in aid/central assistance, etc., which have been accounted for under Major Head 1601.

This has reference to Statements 14, 15 and 21 of the Finance Accounts.

(xii) Writing off of Central Loans:

Further to the recommendations of the Thirteenth Finance Commission, Ministry of Finance, Government of India, in February 2012, had written off loans advanced to the State Government by various Ministries (except those advanced by the Ministry of Finance itself) as on 31 March 2010, towards Central Plan and Centrally Sponsored Schemes. Ministry of Finance permitted the State Governments to adjust the excess repayments of principal and interest made from the effective date of the order (31 March 2010) and its implementation against future repayments to the Ministry of Finance. The Government of Himachal Pradesh had made excess repayment of ₹ 15.58 crore (principal ₹ 7.72 crore, interest ₹ 7.86 crore) to end of 31 March 2025, of which, Ministry of Finance has so far adjusted ₹ 12.31 crore. No amount has been adjusted during 2024-25.

This has reference to Statement 17 of the Finance Accounts.

(xiii) Loans given by the State Government:

In respect of old loans amounting to ₹ 96.73 crore involving six loanee entities as on 31 March 2025, recoveries of principal have not been affected during the past several years, which include loans pending since the year 1985-86.

The Principal Accountant General (A&E) annually communicates loan balances [where detailed accounts are maintained by the Principal Accountant General (A&E)] to the loan sanctioning departments for verification and acceptance. Four out of the six loanees have confirmed the balances. Details of information awaited from Departmental Officers for Reconciliation of Balances have been provided in Appendix-VII of the Finance Accounts.

This has reference to Statements 7 & 18 of the Finance Accounts.

(xiv) Committed Liabilities:

In terms of the Twelfth Finance Commission recommendations, action has been initiated by the Central Government to move towards accrual basis of accounting. However, as the transition would occur in stages, for a changeover to the accrual-based system of accounting, some additional information in the form of statement is required to be appended to the present system of cash accounting to ensure more transparency in decision-making. The State Government has to furnish information on Committed Liabilities and the same is to be reflected in Appendix-XII of Finance Accounts, Vol-II. However, the State Government did not furnish the same.

(xv) Expenditure on Centrally Sponsored Schemes (CSSs):

During the year, the total expenditure booked under Centrally Sponsored Schemes, as on 31 March 2025, is ₹ 6,727.35 crore (Revenue Expenditure ₹ 5,131.18 crore and Capital Expenditure ₹ 1,596.17 crore), which includes expenditure out of Central Share (₹ 4,687.49 crore) and State Share (₹ 2,039.86 crore). State share expenditure includes expenditure of ₹ 1,245.89 crore funded from Externally Aided Projects Grants from GoI, which should have been included in Central Share expenditure.

This has reference to Statements 15 and 16 of the Finance Accounts.

(xvi) Direct transfer of Central Scheme Funds by the Union Government to Implementing Agencies / Beneficiaries in the State:

As per the PFMS portal of the CGA, ₹ 1,852.42 crore was directly received by the implementing agencies including beneficiaries (NGOs, Central Govt. organizations, Statutory organizations, Urban/Rural Bodies, Beneficiaries, etc.) in the State during 2024-25. The direct transfer of fund to the implementing agencies has decreased by 4.83 *per cent* as compared to 2023-24 (from ₹ 1,946.42 crore in 2023-24 to ₹ 1,852.42 crore) in 2024-25.

Details are in Appendix-VI of the Finance Accounts.

(xvii) Off-Budget Liabilities of State Government, Implicit Subsidies and fiscal burden due to policy implications:

Off-Budget Borrowing is a liability of the Government in as much as the principal and the interest thereon invariably are serviced through the Government Budget, either as assistance or grant to the State entity.

The State Government did not disclose the off-budget liabilities in their budget documents/annual financial statements.

The State Government informed the Ministry of Finance, Government of India and to the Principal Accountant General (A&E) office that the State had not availed any off-budget borrowings during 2024-25.

During the year, the State Government has paid principal of ₹ 289.05 crore and an interest of ₹ 183.51 crore on the bond issued under UDAY.

(xviii) Transfer of funds to Single Nodal Agency (SNA):

Ministry of Finance, Government of India vide letter No. 1(13)PFMS/FCD/2020, dated 23-03-2021 had notified procedure for release of funds under Centrally Sponsored Scheme (CSS) and monitoring utilization of the funds released through Single Nodal

Agency (SNA). For each CSS, SNA is set up with own Bank Account in scheduled Commercial Bank authorized to conduct Government business by the State Government.

As per MoF, GoI's letter dated 16 February, 2023, the State Government shall transfer the Central share as well as the commensurate State share to the SNA account within 30 days of receipt of Central share. Any delay beyond 30 days in transfer of Central share to the SNA account, interest on the number of days at the rate of 7% per annum has to be paid by the State Government with effect from 01-04-2023.

As per the State Government/SNA 01 report of PFMS portal, the State Government received ₹ 4,090.75 crore being Central share during the year in its Treasury account. As on 31 March 2025, the Government transferred Central share of ₹ 4,279.97 crore and State share of ₹ 796.51 crore to the SNAs. Detailed vouchers and supporting documents of actual expenditure were not received by Principal Accountant General (A&E) office from the SNAs.

As informed by the State Government/as per the SNAs report, ₹ 764.37 crore are lying unspent in the bank accounts of SNAs as on 31 March 2025.

(xix) Funds transferred to DDO Bank Account:

As per Rule 183 (V) of the Himachal Treasury Rules, no money shall be drawn from the treasury unless it is required for immediate disbursement. It is not permissible to draw money from the treasury in anticipation of demands or to prevent the lapse of budget grants. The State Government has not provided information regarding funds transferred to DDO Bank Accounts.

4. Contingency Fund:

In exercise of the powers conferred by Section 3 of the Contingency Fund Act, 1971, the State Government made the Himachal Pradesh Contingency Fund Act, 1971 for regulating all matters connected with or ancillary to the custody of, payment of monies into, and the withdrawal of monies from, the Contingency Fund of the State of Himachal Pradesh. The Contingency Fund of the State of Himachal Pradesh has a corpus of ₹ 5.00 crore. During the year, there was no transaction from the Contingency Fund. At the end of 2024-25, no amount remained un-recouped.

As on 31 March 2025, Contingency Fund has balance of ₹ 5.00 crore.

The relevant figures are available in Statements 1, 2, and 21 of the Finance Accounts.

5. Public Account:

(i) National Pension System (NPS):

The State Government of Himachal Pradesh has notified reversion to the Old Pension Scheme (OPS) with effect from 01.04.2023. As per information provided by the State Government, there were a total of 1,18,877 NPS Subscribers as on 01.04.2023. Out of which, 1,17,520 subscribers had opted for the OPS and 1,357 subscribers remained in NPS as on 31.03.2025. After 01.04.2023, all appointments were made under CCS Pension Rules 1972.

During the year 2024-25, contribution from Government under MH-2071-Minor Head 117 was ₹ 12.79 crore and employees contribution was ₹ 8.93 crore for NPS. This also included the contribution in relation to AIS officers. The Government transferred ₹ 21.42 crore (Employee share ₹ 8.93 crore and Government's share ₹ 12.49 crore) to the Public Account under Major Head 8342-117 Defined Contribution Pension scheme. The Government's contribution reflected under MH 8342-117 (₹ 12.49 crore) was lower than the amount booked under MH 2071-01-117 (₹ 12.79 crore) because DDOs directly released the Government's NPS contribution for the last month to retiring subscribers, instead of routing it through the Public Account.

Of the total amount transferred / deposited in the Public Account, ₹ 16.60 crore remained in the Public Account as on 31 March 2025 and was not transferred to the NSDL. The cash balance of the Government was overstated by this amount.

(ii) (A) Reserve Funds bearing Interest:

(a) State Disaster Response Fund (SDRF):

In terms of guidelines on constitution and administration of the State Disaster Response Fund (under Major Head- '8121 General & Other Reserve Funds' which is under interest bearing section), the Central and State Governments are required to contribute to the Fund in the proportion of 90:10. During the year 2024-25, the State Government received ₹ 378.40 crore as Central Government's share. The State Government's share during the year is ₹ 41.60 crore. The State Government transferred ₹ 420.00 crore (Central share ₹ 378.40 crore and State share ₹ 41.60 crore) to the Fund under Major Head 8121-122 SDRF.

In addition, during the year 2024-25, the State Government received ₹ 84.56 crore from the Central Government towards NDRF. Out of which, State Government transferred ₹ 66.92 crore to the Fund under Major Head 8235-125-NDRF as on 31 March 2025.

Remaining amount of ₹ 17.64 crore was not transferred to the Fund during the year, resulting in understatement of revenue expenditure to that extent.

An amount of ₹ 520.19 crore was set off in the Major Head 2245 as expenditure met from the Fund (₹ 410.59 crore from SDRF and ₹ 109.60 crore from NDRF) and no amount was invested from the Fund. The closing balance as on 31 March 2025 was ₹ 67.55 crore and ₹ 13.54 crore in SDRF and NDRF respectively.

(b) State Disaster Mitigation Fund:

The State Disaster Mitigation Fund (SDMF) is to be constituted under section 48 (1) (c) of the Disaster Management Act, 2005. This Fund is exclusively for the purpose of mitigation project in respect of disaster covered under State Disaster Response Fund (SDRF)/National Disaster Response Fund (NDRF) guidelines and the State specific local disaster notified by the State Government from time to time. The State Government has created the SDMF vide Notification No. Fin-G-C(2) 05/2022 dated 27.02.2023 under Major Head 8121-130- State Disaster Mitigation Fund.

The Central and the State Governments are required to contribute to the Fund in the proportion of 90:10. During the year 2024-25, the State Government received ₹ 184.65 crore as Central Government's share of SDMF (₹ 94.60 crore for 2024-25 and ₹ 90.05 crore arrears of 2023-24). Corresponding State Government's share during the year was ₹ 20.40 crore (₹ 10.40 crore for 2024-25 and ₹ 10.00 crore for 2023-24). The State Government transferred ₹ 205.05 crore (Central share: ₹ 184.65 crore and State share: ₹ 20.40 crore) to the Fund under Major Head 8121-130 SDMF.

An amount of ₹ 200.28 crore was set off in the Major Head 2245 as expenditure met from the Fund and no amount was invested from the Fund. The closing balance as on 31 March 2025 was ₹ 48.23 crore in the Fund.

(c) State Compensatory Afforestation Fund:

In compliance with the instructions issued by the Ministry of Environment, Forests and Climate Change, Government of India, the State Governments are required to establish the State Compensatory Afforestation Fund (SCAF) under interest bearing section in Public Account of the State for amounts received from user agencies for undertaking Compensatory Afforestation.

During the year 2024-25, the State Government has received ₹ 0.02 crore (Nil in 2023-24) from the user agencies and remitted 10 *per cent* share (Nil in previous year) to

the National Fund. The Government also received ₹ 784.65 crore (₹ 308.30 crore in 2023-24) from National Compensatory Afforestation Deposit.

During the year 2024-25, the expenditure of ₹ 105.57 crore incurred under Major Head 2406-04-103-State Compensatory Afforestation has been met from the Fund. The Government has not invested any amount from the Fund. The total balance in the State Compensatory Afforestation Fund as on 31 March 2025 was ₹ 2,623.42 crore.

(B) Reserve Funds not bearing Interest:

(a) Consolidated Sinking Fund:

In terms of recommendations of Twelfth Finance Commission, the State Governments were required to create Consolidated Sinking Fund to be administered by the Reserve Bank of India for redemption of outstanding liabilities. According to Reserve Bank of India's guidelines of 2006, the State Governments were required to make minimum annual contribution to the Fund at the rate of 0.5 *per cent* of the outstanding liabilities at the end of previous financial year. The Government of Himachal Pradesh has not created Consolidated Sinking Fund till date.

(b) Guarantee Redemption Fund:

The State Governments were required to set up Guarantee Redemption Fund, as per recommendation of Twelfth Finance Commission to meet the contingent liabilities arising from the guarantees given and make minimum annual contributions to the Fund at prescribed rate of the outstanding guarantees as at the end of the previous year. The Government of Himachal Pradesh has not created the Guarantee Redemption Fund yet.

(iii) Central Road and Infrastructure Fund (CRIF):

The erstwhile Central Road Fund (CRF) has been renamed as the Central Road and Infrastructure Fund (CRIF) vide GoI's Gazette notification dated 31 March 2018. The CRIF is to be used for development and maintenance of National Highways, Railway projects, improvement of safety in Railways, State and Rural roads and other infrastructure, etc.

In terms of the extant accounting procedure, the grants received by the State from the Centre are to be initially booked as Revenue Receipts under Major Head 1601. Thereafter, the amount so received is to be transferred by the State Government to the Public Account under Major Head 8449-103-Subventions from Central Road and Infrastructure Fund through functional Major Head(s). The State Government has not yet created CRIF in Public Account.

During the year 2024-25, the State Government received grants of ₹ 130.96 crore towards CRIF. The State Government did not transfer any amount to the Fund in the Public Account, as the Fund has not been yet created by the State Government. However, during the year the State Government spent ₹ 167.83 crore under CRIF from Major Head 5054.

(iv) Suspense and Remittance Balances:

During the year 2024-25, expenditure of ₹ 0.17 lakh and receipts of ₹ 0.78 crore have been placed under suspense [Major Head 8658, Minor Head 110-Reserve Bank Suspense-Central Accounts Office] by the office of the Principal Accountant General (A&E), for want of documents like vouchers/challans/sanction letters, etc. The total expenditure/receipt of the Government is understated to that extent.

The Finance Accounts reflect the net balances under Suspense and Remittance Heads. The outstanding balance under these heads, worked out by aggregating the outstanding debit and credit balances separately under various heads, was ₹ 1,074.16 crore (credit) under Major Heads 8658,8782 and 8793 as on 31 March 2025 [₹ 885.53 crore (credit) as on 31 March 2024].

Non-clearance of outstanding balances under these heads affects the accuracy of receipt/expenditure figures and balances under different heads of Accounts (which are carried forward from year to year) of the State Government.

(v) Cheques, Bills and Digital Payments:

In Himachal Pradesh Major Head 8670-Cheques and Bills is not operational, as all payments are made through digital mode. In case of digital payments, payment orders through electronic mode are treated as expenditure as and when the transaction is completed. However, in case of failure referred to as 'e-Kuber failed' transactions, the treatment of the transaction is accounted for as suspense in 8658. In the year 2024–2025, an amount of ₹ 13.11 crore (Credit) was accounted for as suspense due to e-Kuber failed transactions.

(vi) Building and other Construction Workers Welfare Cess:

The Government of India enacted the Building and Other Construction Workers Welfare Cess Act, 1996 (Cess Act) to levy and collect cess for providing benefits to the workers.

During the year 2024-25, the Government collected ₹ 33.47 crore (2023-24: ₹ 48.36 crore) as Labour Cess under Major Head 8443 and transferred ₹ 30.38 crore (2023-24: ₹ 42.76 crore) to the Building and Other Construction Workers Welfare Board. Total un-transferred amount from the Major Head 8443 was ₹ 35.36 crore as on

31 March 2025 (₹ 32.27 crore as on 31 March 2024). Since this is pass through transaction, the cash balance of the Government was overstated by this amount.

(vii) Other Cesses levied by the State:

During the year 2024-25, the State Government collected various Cesses amounting to ₹ 209.58 crore (Milk Cess: ₹ 141.92 crore, Cess on taxes: ₹ 43.02 crore, Prakritik Kheta Cess: ₹ 24.62 crore, Cess on land: ₹ 0.03 crore) (2023-24: ₹ 182.40 crore) other than Labour Cess. There is no provision for creation of Fund under Public Account of the State in the Acts/Notifications of these Cesses. The Principal Accountant General (A&E) has taken up the matter with the State Government for creation of Fund for other Cesses under Public Account of the State.

(viii) Remittance to National Mineral Exploration Trust (NMET):

National Mineral Exploration Trust (NMET) was established in August 2015 under section 9C (1) (inserted vide amendment in 2015) of the Mines and Mineral (Development and Regulation) – MMDR Act, 1957. Section 9C(4) of the Act states that the holder of a mining lease or a mineral concession shall pay to the Trust, a sum equivalent to two per cent of the royalty paid in terms of the Second Schedule, in such manner as may be prescribed by the Central Government.

Rule 7(6) of the NMET Rules, 2015 state that the responsibility of collection and depositing the amount so collected in the Trust Fund and maintaining necessary accounts to be shared with the Central Government shall be that of the State Government. Further, Rule 7 (7) states, that the State Government shall provide information regarding amount paid pursuant to sub-section (4) of section 9C of the Act and royalty payments to the India Bureau of Mines on a monthly basis.

As per the accounting procedure, the State Government on receipt of the royalty, under Major Head 0853-Non-ferrous Mining and Metallurgical Industries, required to transfer the amount in the Public Account of the State under Major Head 8449-123-NMET. The accretions are thereafter periodically transferred to the NMET under Public Account of India. The NMET Fund is non-lapsable and non-interest-bearing fund created under the Public Account of India.

During the year 2024-25, the State Government collected ₹ 352.79 crore under Major Head 0853-102-Major Mineral Concession Fees and Rents. No amount has been booked under Major Head 0853-107-Minor Mineral Concession Fees and Rents. However, the State has both Major and Minor Minerals. The Principal Accountant General (A&E) has taken up the matter with the State Government.

During the year 2024-25, the State Government received an amount of ₹ 2.18 crore as NMET contribution directly in Public Account under Major Head 8449-00-123 from mining holders. The State Government transferred ₹ 2.21 crore to the National Mineral Exploration Trust.

Out of the amount under Major Head 8449-123, the Government transferred ₹ 0.32 crore (O.B. ₹ 0.36 crore) short to the NMET (to the Centre), which resulted in overstatement of Cash Balance of the State Government.

(ix) Adverse Balance:

Adverse balance is a situation, when a head of account closing to balances at the end of the financial year reflects minus balance, debit/(-)credit balance representing liability heads or heads where it should normally have credit balance, and credit/(-) debit balance representing Assets heads or heads where it should normally have debit balance. The adverse balance in a head of account arises due to misclassification, more disbursement than the availability of funds, more disbursement than the contribution received, non-carrying forward of balances from one accounting unit to another, administrative reorganization leading to creation of States/more accounting units, etc. In 2024-25, there was no new adverse balance added.

Adverse balance as on 31.03.2025 appears in one Major Head as detailed below:

Head of Accounts	Description	Amount (₹ in crore)
7610-203	Loans to Govt. Servant (Advances for purchase of other Conveyance)	0.03
7610-800	Loans to Govt. Servant (Other Advances)	0.22

(x) Cash Balance:

The Cash balance as on 31 March 2025 as per the record of Principal Accountant General (A&E) was ₹ 44.74 crore (Debit) and that reported by the RBI was ₹ 37.78 crore (Credit). There was a net difference of ₹ 6.96 crore (Debit), mainly due to pending reconciliation between the Treasury/RBI/Agency Bank and AG Office. The difference is under reconciliation. The position for the last year, *i.e.*, as on 31 March 2024 was ₹ 42.44 crore (Debit).

The relevant figures are available in Statement No. 21 of the Finance Accounts.

6. Impact on Receipt, Expenditure and Cash Balance:

The impact on revenue receipt, expenditure and cash balance of misclassifications/non-compliance to statutory provisions on the state's finances as brought out in the preceding paras is tabulated below:

(₹ in crore)

Para No.	Item	Impact on Revenue Receipts		Impact on Revenue Expenditure		Impact on Capital Expenditure		Impact on Cash Balance	
		O/S	U/S	O/S	U/S	O/S	U/S	O/S	U/S
3 (viii)	Non-payment of interest on interest bearing Reserve Funds/Deposits	--	--	--	23.01	--	--	--	--
5 (i)	Non transfer of amount accumulated under Major Head 8342-117 (NPS)	--	--	--	--	--	--	16.60	--
5 (ii) (a)	Short transfer of receipt of NDRF to the Fund	--	--	--	17.64	--	--	--	--
5 (iv)	Suspense and Remittance Balances	--	0.61	--	--	--	--	--	--
5 (vi)	Short-Transfer of Labour Cess	--	--	--	--	--	--	35.36	--
5 (viii)	Short-Transfer to NMET	--	--	--	--	--	--	0.32	--
Total (Net) Impact	Overstatement (O/S)/Under-statement (U/S)	--	0.61	--	40.65	--	--	52.28	--

© COMPTROLLER AND
AUDITOR GENERAL OF INDIA
www.cag.gov.in

<https://cag.gov.in/ae/himachal-pradesh/en>

