

Appendix - 1.1

(Reference to paragraph: 1.1; page 1)

Part A: Structure and Form of Government Accounts

Structure of Government Accounts: The accounts of the State Government are kept in three parts (i) Consolidated Fund, (ii) Contingency Fund and (iii) Public Account.

Part I: Consolidated Fund

All revenues received by the State Government, all loans raised by issue of treasury bills, internal and external loans and all moneys received by the Government in repayment of loans shall form one consolidated fund entitled 'The Consolidated Fund of the State' established under Article 266 (1) of the Constitution of India.

Part II: Contingency Fund

Contingency Fund of the State established under Article 267(2) of the Constitution is in the nature of an imprest placed at the disposal of the Governor to enable him to make advances to meet urgent unforeseen expenditure, pending authorisation by the Legislature. Approval of the Legislature for such expenditure and for withdrawal of an equivalent amount from the Consolidated Fund is subsequently obtained, whereupon the advances from the Contingency Fund are recouped to the Fund.

Part III: Public Account

Receipts and disbursements in respect of certain transactions such as small savings, provident funds, reserve funds, deposits, suspense, remittances etc which do not form part of the Consolidated Fund, are kept in the Public Account set up under Article 266 (2) of the Constitution and are not subject to vote by the State Legislature.

Appendix - 1.1
(Reference to paragraph: 1.1; page 1)
Part B: Lay out of Finance Accounts

Statement	Lay Out
Statement No.1	Presents the summary of transactions of the State Government—receipts and expenditure, revenue and capital, public debt receipts and disbursements etc in the Consolidated Fund, Contingency Fund and Public Account of the State.
Statement No.2	Contains the summarized statement of capital outlay showing progressive expenditure to the end of 2006-07.
Statement No.3	Gives financial results of irrigation works, their revenue receipts, working expenses and maintenance charges, capital outlay, net profit or loss, etc.
Statement No.4	Indicates the summary of debt position of the State which includes borrowing from internal debt, loans and advances from Government of India, other obligations and servicing of debt.
Statement No. 5	Gives the summary of loans and advances given by the State Government during the year repayments made, recoveries in arrears etc.
Statement No.6	Gives the summary of guarantees given by the Government for repayment of loans etc. raised by the statutory corporations, local bodies and other institutions.*
Statement No.7	Gives the summary of cash balances and investments made out of such balances.
Statement No.8	Depicts the summary of balances under Consolidated Fund, Contingency Fund and Public Account as on 31 March 2007.
Statement No.9	Shows the revenue and expenditure under different heads for the year 2006-07 as a percentage of total revenue/expenditure.
Statement No.10	Indicates the distribution between the charged and voted expenditure incurred during the year.
Statement No.11	Indicates the detailed account of revenue receipts by minor heads.
Statement No.12	Provides accounts of revenue expenditure by minor heads under non-plan and plan separately and capital expenditure by major head-wise.
Statement No.13	Depicts the detailed capital expenditure incurred during and to the end of 2006-07.
Statement No.14	Shows the details of investment of the State Government in statutory corporations, Government companies, other joint stock companies, co-operative banks and societies etc up to the end of 2006-07.
Statement No.15	Depicts the capital and other expenditure to the end of 2006-07 and the principal sources from which the funds were provided for that expenditure.
Statement No.16	Gives the detailed account of receipts disbursements and balances under heads of account relating to Debt, Contingency Fund and Public Account.
Statement No.17	Presents detailed account of debt and other interest bearing obligations of the Government of Jharkhand.
Statement No.18	Provides the detailed account of loans and advances given by the Government of Jharkhand, the amount of loan repaid during the year, the balance as on 31 March 2007 and the interest received during the year.
Statement No.19	Gives the details of earmarked balances of reserve funds.

* Not prepared in the absence of assets and liabilities between Bihar and Jharkhand.

Appendix - 1.1
(Reference to paragraph: 1.2; page 3)
Part C: List of Terms used in the Chapter I and basis of their calculation

Terms	Basis of calculation
Buoyancy of a parameter	Rate of Growth of the parameter/ GSDP Growth
Buoyancy of a parameter (X) With respect to another parameter (Y)	Rate of Growth of parameter (X)/ Rate of Growth of parameter (Y)
Rate of Growth (ROG)	[(Current year Amount /Previous year Amount)-1]* 100
Development Expenditure	Social Services + Economic Services
Average interest paid by the State	Interest payment/[(Amount of previous year's Fiscal Liabilities + Current year's Fiscal Liabilities)2]*100
Weighted Interest Rate (I_w)	$I_w = \sum_i^n I_i W_i$ where I_i is the rate of interest on the i^{th} stock of debt and W_i is the share of i^{th} stock in the total debt stock of the State.
Interest spread	GSDP growth – Weighted Interest Rate
Quantum spread	Debt stock *Interest spread
Interest received as per cent to Loans Outstanding	Interest Received [(Opening balance + Closing balance of Loans and Advances)2]*100
Revenue Deficit	Revenue Receipt – Revenue Expenditure
Fiscal Deficit	Revenue Expenditure + Capital Expenditure + Net Loans and Advances – Revenue Receipts – Miscellaneous Capital Receipts
Primary Deficit	Fiscal Deficit – Interest payments
Balance from Current Revenue (BCR)	Revenue Receipts minus all Plan grants and Non-plan Revenue Expenditure excluding expenditure recorded under the major head 2048–Appropriation for reduction of Avoidance of debt.

Appendix – 1.2

(Reference to paragraph: 1.2 and 1.6; page 3 and 20)

**SUMMARISED FINANCIAL POSITION OF THE GOVERNMENT OF JHARKHAND
AS ON 31 MARCH 2007**

Liabilities				
As on 31 March 2006			As on 31 March 2007	
<i>(Rupees in crore)</i>			<i>(Rupees in crore)</i>	
13017.79		Internal Debt		14422.62
	3551.22	Market Loans bearing interest	3807.73	
	2.00	Market Loans not bearing interest	7.24	
	4.70	Loans from LIC	4.70	
	1.60	Loans from GIC	1.60	
	2413.05	Loans from other institutions	2341.96	
	8.86	Ways and means advances (R.B.I)	8.86	
	7036.36	Special securities issued to NSS Fund of Central Government	8250.53	
		Shortfall in Deposit with Reserve Bank		
2846.40		Loans and Advances from Central Government		2701.21
	111.07	Pre 1984-85 loans	95.29	
	132.38	Non-Plan Loans	122.30	
	2566.14	Loans for state plan scheme	2446.02	
	2.22	Loans for central plan scheme	2.00	
	20.05	Loans for Centrally Sponsored Plan Scheme	21.06	
	14.54	Other ways and means advances	14.54	
150.00		Contingency Fund		118.25
490.50		Small Saving, Provident Fund etc.		719.51
790.25		Deposits		1201.97
331.33		Reserve funds		488.26
		Suspense and Miscellaneous Balance		
17626.27		Total		19651.82

		Assets			
5908.05		Gross Capital outlay on fixed assets		7369.39	
	14.04 #	Investment in shares of companies corporation etc.	14.04 #		
	5894.01	Other Capital Outlay	7355.35		
5067.04		Loans and advances		5462.09	
	4746.47	Loans for power project	5080.92		
	287.31	Other Development Loans	348.99		
	33.26	Loans to Government servants and Misc. loans	32.18		
5.48		Advances		21.28	
13.85		Remittance Balance		98.49	
382.85		Suspense and Misc. Balance		339.18	
(-) 54.62		Cash		1003.65	
		Cash in Treasuries and Local Remittances			
	110..52	Departmental Cash Balance	56.31		
	0.11	Permanent advances	0.11		
	(-)428.84	Deposit with Reserve Bank	(-)135.96		
	116.22	Investment of earmarked funds	116.22		
	147.37	Cash Balance Investment	966.97		
6303.62		Deficit on Government Accounts		5357.74	
	26.94	Revenue deficit during the year			
		Revenue surplus during the year	945.88		
	6276.68	Accumulated Deficit	6303.62		
17626.27		Total		19651.82	

Excludes Rs 2 crore invested from Revenue Account and Rs 5.75 crore shown in the Accounts of Corporations but its source is awaited.

Appendix – 1.3
(Reference to paragraph: 1.2; page 3)
ABSTRACT OF RECEIPTS AND DISBURSEMENTS FOR THE YEAR 2006-07.

Receipts				Disbursement					
2005-2006			2006-2007	2005-2006		Non plan	Plan	Total	2006-2007
<i>(Rupees in crore)</i>				<i>(Rupees in crore)</i>					
SECTION – A REVENUE									
8463.88	I Revenue receipts		10009.82	8490.82	I Revenue Expenditure	6632.25	2431.69	9063.94	9063.94
2758.04	- Tax revenue	3188.50		3577.43	General Services	3453.66	356.32	3809.98	3809.98
1426.53	- Non – Tax Revenue	1250.40		3060.30	Social Services	2242.21	1085.06	3327.27	3327.27
3175.89	- State's share of union taxes	4050.90		1628.08	Education Sport, Art and Culture	1299.42	439.14	1738.56	
111.72	- Non plan grants	259.70		472.29	- Health and Family Welfare	288.59	107.20	395.79	
719.34	- Grant for State Plan Scheme	760.95		166.25	- Water Supply, Sanitation Housing and Urban Development	218.40	58.67	277.07	
272.36	- Grants for Central and Centrally Sponsored Plan Scheme	499.37		15.22	- Information and Broadcasting	19.36	2.80	22.16	
				258.24	- Welfare of Scheduled Caste Scheduled Tribes and other Backward Classes	156.23	77.34	233.57	
				26.64	- Labour and Labour Welfare	20.31	16.93	37.24	
				486.03	- Social Welfare and Nutrition	230.92	382.99	613.91	
				7.55	- Others	8.97		8.97	
				1853.08	-Economic Services	934.34	990.30	1924.64	1924.64
				446.39	-Agriculture and Allied Activities	181.57	325.81	507.38	
				461.65	- Rural Development	197.00	311.98	508.98	
				-	- Special Area Programme				
				116.89	- Irrigation and Flood control	162.29	0.25	162.54	
				441.42	- Energy	211.35	28.10	239.45	
				122.75	- Industry and Minerals	25.16	104.97	130.13	
				173.78	- Transport	128.81	164.59	293.40	
				90.20	General Economic Services	28.16	54.60	82.76	
				0.01	Grants-in-aid Contributions	2.05	-	2.05	2.05
8463.88			10009.82	8490.82	Total	6632.25	2431.69	9063.94	9063.94
26.94	II.Revenue deficit carried over to Section – B			-	II.Revenue Surplus Carried over to Section -B				945.88

Receipts				Disbursement					
2005-2006			2006-2007	2005-2006		Non plan	Plan	Total	2006-2007
<i>(Rupees in crore)</i>				<i>(Rupees in crore)</i>					
SECTION – B									
884.41	III. Opening cash including permanent Advances and Cash Balance Investment		(-)54.62	Nil	III. Opening Overdraft from RBI				
	IV. Miscellaneous capital receipts			1839.03	IV. Capital Outlay	0.02	1461.32	1461.34	1461.34
				76.17	General Services		72.37	72.37	72.37
				547.13	Social Services		494.85	494.85	494.85
				171.28	Education Sports, Art and Culture		196.72	196.72	
				59.25	Health and Family Welfare		53.03	53.03	
				189.50	Water Supply, Sanitation		193.89	193.89	
				64.61	Housing and Urban Development				
				62.49	Welfare of Scheduled Castes Scheduled Tribes and Other Backward Classes		51.21	51.21	
				1215.73	Economic Services	0.02	894.10	894.10	894.12
				7.66	Agriculture and Allied Activities		16.69	16.69	
				564.94	Rural Development Special Areas Programmes	0.02	472.32	472.34	
				340.55	Irrigation and Flood Control		205.14	205.14	
				30.00	Energy		53.00	53.00	
				4.00	Industry and Minerals		1.63	1.63	
				249.39	Transport	-	129.48	129.48	
				19.19	Other Economic Services		15.84	15.84	
9.81	V. Recoveries of Loans and Advances		15.75	3746.84	V. Loans and Advances disbursed	291.90	118.91	410.81	410.81
-	- From Power Project		-	3651.12	For Power Project	274.45	60.00	334.45	
9.58	- From Government servants	15.05		15.74	To Government servants	13.97	-	13.97	
0.23	- From others	0.70		79.98	To others	3.48	58.91	62.39	
-	VI. Revenue surplus brought down		945.88	26.94	VI- Revenue Deficit brought down				

3500.62	VII. Public debt receipts		1865.99	281.08	VII – Repayment of Public Debt				606.34
3494.84	-Internal debt other than ways and means Advance and overdraft		1849.14	129.89	Internal debt other than Ways and Means Advances and overdraft			444.30	
-	Net transactions under Ways and means advance and overdraft			-	Net transactions under Ways and means advance and overdraft				
5.78	-Loans and Advances from the Central Government		16.85	151.19	Repayment of Loans and Advances from the Central Government			162.04	
-	VIII- Appropriation to Contingency Fund	-	-	-	VIII- Appropriation to Contingency Fund				
	IX-Amount transferred to Contingency Fund	-	-	-	IX-Expenditure from Contingency Fund				31.75
3908.13	X-Public Account receipts		4292.80	2463.70	X-Public Account Disbursements				3551.92
408.77	-Small Savings and Provident Funds	453.05		196.32	Small Savings and Provident Funds			224.04	
160.85	Reserve funds	156.93		104.40	Reserve Fund			-	
89.78	-Suspense and Misc.	143.12		(-)816.16	Suspense and Misc.			99.45	
1920.26	Remittances	1961.13		2009.04	Remittances			2045.78	
1328.47	Deposit and Advances	1578.57		970.10	Deposit and Advances			1182.65	
	XI-Closing Overdraft from Reserve Bank of India			(-)54.62	XI-Cash Balance at end				1003.64
					Cash in Treasuries and Local Remittances				
				(-)428.84	Deposit with Reserve Bank			(-)135.96	
				110.63	Departmental Cash Balance Including Advances			56.41	
				116.22	Investment of earmarked funds			116.22	
				147.37	Cash Balance Investment			966.97	
8302.97	Total		7065.80	8302.97	Total				7065.80

Appendix – 1.4
(Reference to paragraph: 1.2; page 3)
SOURCES AND APPLICATION OF FUNDS

		Sources			
2005-2006					2006-2007
<i>(Rupees in crore)</i>					
8463.88		1. Revenue receipts			10009.82
9.81		2. Recoveries of loans and advances			15.75
3219.54		3. Increase in public debt other than overdraft			1259.65
1444.43		4. Net receipts from public account			740.88
	212.45	Increase in small savings	229.01		
	358.37	Increase in deposit and advances	395.92		
	56.45	Increase in reserve fund	156.93		
	905.94	Net effect of suspense and miscellaneous transaction	43.67		
	(-)88.78	Net effect of remittance transactions	(-)84.65		
	-	5. Net effect of Contingency Fund transactions			(-)31.75
(+939.03)		6. Decrease in closing cash balance			
14076.69		Total			11994.35
Application					
8490.82		1. Revenue expenditure			9063.94
3746.84		2. Lending for development and other purposes (Loan)			410.81
1839.03		3. Capital expenditure			1461.34
-		4. Transfer to Contingency fund			
-		5. Increase in closing cash balance			1058.26
14076.69		Total			11994.35

Explanatory notes for Statement I, II and III:

1. The abridged accounts in the foregoing statements have to be read with comments and explanations in the Finance Accounts.
2. Government accounts being mainly on cash basis, the deficit on Government account, as shown in Statement I, indicates the position on cash basis, as opposed to accrual basis in commercial accounting. Consequently, items payable or receivable or items like depreciation or variation in stock figures etc., do not figure in the accounts.
3. Remittance, Suspense and miscellaneous balances include cheques issued but not paid, payments made on behalf of other states and other transactions pending settlement etc.
4. In terms of the Bihar Reorganisation Act, 2000 (No. 30 of 2000) the State of Bihar has been reorganised and a new state known as State of Jharkhand comprising 18 districts of the composite State of Bihar has been formed with effect from 15 November 2000 (*i.e.* appointed day). The apportionment of assets and liabilities of the composite State of Bihar immediately prior to the appointed day as also other financial adjustments are to be done in each case with reference to the provision of the Bihar Reorganisation Act, 2000. Such allocation has so far been made in respect of Public Debt and Cash balance only.

Appendix –1.5
(Reference to paragraph: 1.2 & 1.6; page 3 and 20)
TIME SERIES DATA ON STATE GOVERNMENT FINANCES

	2001-02	2002-03	2003-04	2004-05	2005-06	2006-07
<i>(Rupees in crore)</i>						
Part A -Receipts						
1. Revenue Receipts	4495(74)	4937(72)	5638(70)	6661(65)	8464(71)	10010(83)
(i) Tax revenue	1586(35)	1750(35)	1986(35)	2383(36)	2758(32)	3189(32)
Taxes on Agricultural Income	-	-				
Taxes on Sales, Trade, etc.	1239(78)	1366(78)	1601(81)	1882(79)	2212(80)	2257(71)
State Excise	100(6)	99(5)	96(5)	146(6)	162(6)	130(4)
Taxes on Vehicles	86(5)	105(6)	99(5)	130(5)	138(5)	218(7)
Stamps and Registration fees	64(4)	83(5)	82(4)	87(4)	92(3)	122(4)
Land Revenue	10(1)	15(1)	17(1)	17(1)	18(1)	36(1)
Other taxes	87(6)	83(5)	91(4)	121(5)	136(5)	426(13)
(ii) Non Tax Revenue	852(19)	987(20)	1106(20)	1053(16)	1427(17)	1250(12)
(iii) State's share of Union taxes and duties	1603(36)	1703(35)	1980(35)	2366(35)	3176(38)	4051(41)
(iv) Grants-in-aid from GOI	454(10)	497(10)	566(10)	859(13)	1103(13)	1520(15)
2. Misc. Capital Receipts	-	-	-	-	-	-
3. Total revenue and Non debt capital receipts (1+2)	4495	4937	5638	6661	8464	10010
4. Recoveries of Loans and Advances	2	3	4	8	10	16
5. Public Debt Receipts	1585(26)	1889(28)	2422(30)	3570(35)	3501(29)	1866(16)
Internal Debt (excluding Ways and Means Advances and Overdrafts)	1196	1481	1951	3057	3495	1849
Net transactions under Ways and Means Advances and Overdrafts	-	-	-	-	-	-
Loans and Advances from Government of India	389	408	471	513	6	17
6. Total receipts in the Consolidated Fund (3+4+5)	6082	6829	8064	10239	11975	11892
7. Contingency Fund Receipts	-	-	-	-	-	-
8. Public Account receipts	1940	3049	3113	2927	3908	4293
9. Total receipts of the State (6+7+8)	8022	9878	11,177	13166	15883	16185
Part B- Expenditure / Disbursement						
10. Revenue Expenditure	4800(82)	5509(83)	5406(83)	6976(79)	8491(60)	9064(83)
Plan	1262(26)	1025(19)	1091(20)	1980(28)	2139 (25)	2432(27)
Non-plan	3538(74)	4484(81)	4315(80)	4996(72)	6352(75)	6632(73)
General Services (including Interests payments)	1840(38)	2753(50)	2609(48)	2943(42)	3578(42)	3810(42)
Social Services	1897(40)	1935(35)	1869(35)	2524(36)	3060(36)	3327(37)
Economic Services	1062(22)	821 (15)	928(17)	1509(22)	1853(22)	1925(21)
Grants-in-aid and Contributions	0.69(..)	0.72(..)	0.52(..)	0.07(..)	-	2
11. Capital Expenditure	733(12)	866(13)	976(15)	1333(15)	1839(13)	1461(13)
Plan	733(100)	866(100)	976(100)	1333(100)	1837(100)	1461(100)
Non-plan	-	-	-	-	2	-
General Services	7(1)	30(3)	33(3)	20(2)	76(4)	72(5)
Social Services	123(17)	162(19)	126(13)	226(17)	547(30)	495(34)

	2001-02	2002-03	2003-04	2004-05	2005-06	2006-07
<i>(Rupees in crore)</i>						
Economic Services	603(82)	674(78)	817(84)	1087(81)	1216(66)	894(61)
12. Disbursement of Loans and Advances	329(6)	285(4)	134(2)	577(6)	3747(27)	411(4)
13. Total (10+11+12)	5862	6660	6516	8886	14077	10936
14. Repayments of Public Debt	193	986	987	802	281	606
Internal Debt (excluding Ways Means Advances and Overdrafts)	2(1)	127(13)	106(11)	132(16)	130(46)	444(73)
Net transactions under Ways and Means Advances and Overdrafts	-	-	-	-	-	-
Loans and Advances from Government of India	191(99)	859(87)	881(89)	670(84)	151(54)	162(19)
15. Appropriation to Contingency Fund	-	-	-	-	-	-
16. Total disbursement out of Consolidated Fund (13+14+15)	6055	7646	7503	9688	14358	11542
17. Contingency Fund disbursements	-	-	128	-	-	32
18. Public Account disbursements	2463	2434	2913	3603	2464	3552
19. Total disbursement by the State (16+17+18)	8518	10080	10544	13291	16822	15126
Part C - Deficits						
20. Revenue Deficit (-) / Surplus (+) (1-10)	(-)305	(-)572	(+)232	(-)315	(-)27	946
21. Fiscal Deficit (-) / Surplus (+) (3+4 -13)	(-)1365	(-)1720	(-)874	(-)2217	(-)5603	(-)910
22. Primary Deficit(-) / Surplus (+) (21-23)	(-)797	(-)301	(+)308	(-)1076	(-)4183	703
Part D - Other Data						
23. Interest Payments (included in revenue expenditure)	568	1419	1182	1141	1420	1613
24. Arrears of Revenue (Percentage of Tax & Non-Tax Revenue Receipts)	1762(72)	2944(107)	1627(53)	1741(51)	1672	1656
25. Financial Assistance to local bodies etc.	367	459	452	958	1156	1631
26. Ways and Means Advances/ Overdraft availed (days)	1	-	31	-	-	29
27. Interest on WMA/ Overdraft	-	-	1	-	-	-
28. Gross State Domestic Product (GSDP)	35030	38187	42494	56871(P)	62950(Q)	69752(A)
29. Outstanding Public Debt (year end)	7537	8441	9876	12645	15864	17123
30. Outstanding guarantees (year end)	-	-	-	-	-	-
31. Maximum amount guaranteed (year end)	-	-	-	-	-	-
32. Number of incomplete projects	1	1	1	1	11	27
33. Capital blocked in incomplete projects	907	955	1007	1103	1310	1489

Note: Figures in brackets represent percentages (rounded) to total of each sub heading

R.E: Revised Estimate, Q: Quick and A: Advanced Estimates.

* Excludes figures relating to Water Resources Departments.

Appendix – 1.6

(Reference to paragraph: 1.5.2; page 15)

Statement of savings/surrenders in Departments of Social Services

(Rupees in crore)

Name of Department	Head	Provision	Expenditure	Savings/surrender	Adverse impact of the savings/surrenders	Amount
H&FW	2210-01-110-0018 N.P	121.38	7.5	113.88	(i)Non-construction of 6 C.H.C having 30 beds each in areas having no PHC.	53.75
	2210-03-103-0006 N.P				(ii)Non-upgradation of 39 PHC in CHC with 30 beds each construction of building and purchase of machinery.	11.63
					(iii)Non-upgradation of 70 Addl. PHC in P.H.C	17.50
					(iv)Non-upgradation of 4 sub-divisional Hospitals into Sadar Hospitals.	12.00
					(v) Non-upgradation of 7 Mother & child centre into 30 bedded Hospitals.	12.00
					(vi)Non-upgradation of 5 Urban family centre into 30 bedded mother & child hospitals.	6.00
					(vii) Non-upgradation of Sadar Hospitals into sub-divisional Hospitals.	4.50
					(viii)Non-upgradation of Sadar Hospital Ranchi into 500 bedded Hospitals.	4.00
(Rs 7.5 crore only spent on above mentioned works)						
H&FW	2210-03-103-0001	120.03	82.23	37.80	Failure to appoint 1267 Doctors & 66 Pharmacist distorted the Doctor: Covered population ratio from 1:12196 to 1:25012.	37.80
H&FW	2210-03-103-0103	19.00	9.70	9.30	Non-upgradation of 7 PHC & Addl. PHC in CHC.	9.30
	2210-03-796-0202	15.00	12.50	2.1	Upgradation of 2 PHC in CHC	2.1
	4210-01-200-0201	5.00	3.75	1.25	Non-construction of building & purchase of Machinery and Medicines.	1.25

	4210-02-796-0215	12.00	3.85	8.15	Non-construction of Labour Rooms in 48 PHC	8.15
	4210-02-103-0111	12.00	0.70	11.30	Non-construction of Labour Rooms in 58 PHCs	11.30
	2202-01-101-0101 N.P	107.82	---	107.82	Non-strengthening of 10,000 primary school, 155 Kasturba Gandhi Vidhalaya and 128 Basic schools.	107.82
	2202-01-101-0101 CSPS	49.89	13.34	36.55	14.62 lakh students were deprived of the benefit of mid day meal.	36.55
H.R.D	2202-01-101-0101 Plan	88.99	85.66	3.34	Non-construction of kitchen shed and non-purchase of utensils for primary & Middle school.	3.34
	2202-01-101-0206	65.17	42.07	23.10	Books to students of General and Backward classes could not be supplied.	9.00
					5.64 lakh students deprived of getting midday meal benefit.	14.10
	2202-02-109-0005	113.00	----	113.00	Strengthening of 50 projects schools, non-upgradation of 125 middle school into High schools, 100 High school into +2 school and non-construction of boundary wall of 150 Girls secondary school.	113.00
Welfare	2225	9.00	0.48	8.52	Non-implementation of Jharkhand Tribal Development programme in 90 villages in 8 blocks under 4 districts.	8.52
	2225	59.97		59.97	Non-implementation of Tribal Welfare scheme viz. construction of Angan Bari Centre, Power supply in Residential schools etc.	59.97

Appendix 1.7
(Reference to paragraph: 1.5.3; page 16)
Statement of savings/surrenders in Departments of Economic Services

(Rupees in crore)

Name of Department	Head	Provision	Expenditure	Savings/surrender	Adverse impact of the savings/surrenders	Amount
Energy Department	6801-00-796-0202 Plan	530.00	52.00	478.00	Non-installation of 52 power sub-station under transmission.	41.00
	6801-00-800-0101				Non-installation of transmission line.	437.00
	6801-00-202-0101	13.00		13.00	Non-restoration of work of unit No. 3 & 5 in P.T.P.S	13.00
	6801-00-201-0101	22.00	--	22.00	Non-completion of 8 small incomplete Hydel projects (34.85 M.W)	22.00
	6801-00-796-0203		--	400.00	New APDRP schemes in 13 Districts and addl. schemes in 6 Districts	
					Non-installation of 24 numbers of 33/11 kv power station	94.12
					Non-cabling of 1926.80 km of 33 kv & 11 kv line.	108.59
					Non-restoration and non-installation of 1241 Nos. of Distribution system.	175.31
					Non-computerized consumer centre and energy accounting system , metering etc.	21.98
R.D.D.				20.64	Non-construction of 8256 Indra Awas to persons under B.P.L.	20.64
				92.77	Non-completion of Sampoorna Gramin Rozgar Yojana for employment of people under BPL, which resulted in direct loss of approx 74.25 lakh numbers of mandays employment.	92.77
				3.91	Non-completion of nearly half the work of water conservation in drought prone areas i.e. 500 hectare of land in each 150-200 villages in 14 districts.	3.91
				47.43	Non-completion of nearly half the work of chief Minister Gram Setu Yojana	47.43

Appendix –1.8

(Reference to paragraph: 1.5.6; page 19)

**Statement of outstanding Utilisation Certificates related to Grants-in-aid
(State) for the period from 1.4.2006 to 31.3.07 but not received up to 30
September 2007 for Jharkhand State**

(Rupees in lakh)

Sl. No.	Department	Year	Due		Received		Awaited		
			Item	Amount	Item	Amount	Item	Amount	
1	Industry	Up to 2005-06	98	49702.30	8	11789.24	90	37913.06	152 (Item)
		2006-07	101	84384.46	39	686.74	62	83697.72	121610.78 (Amt.)
2	Animal Husbandry	Up to 2005-06	46	445.83	46	445.83	-	-	20 (Item)
		2006-07	65	1160.48	45	898.31	20	262.17	262.17 (Amt.)
3	Co-operative	Up to 2005-06	73	19614.32	63	8545.50	10	11068.82	33 (Item)
		2006-07	29	8689.86	6	2336.45	23	6353.41	17422.23 (Amt.)
4	Medical	Up to 2005-06	5	8004.65	4	7182.00	1	822.65	5 (Item)
		2006-07	5	5462.47	1	1052.73	4	4409.74	5232.39 (Amt.)
5	Agriculture	Up to 2005-06	18	9639.17	18	9639.17	-	-	3 (Item)
		2006-07	3	410.00	-	-	3	410.00	410.00 (Amt.)
6	Welfare	Up to 2005-06	18	5733.31	3	172.47	15	5560.84	46 (Item)
		2006-07	31	1462.26	-	-	31	1462.26	7023.10 (Amt.)
7	Education	Up to 2005-06	101	70405.54	35	40687.92	66	29817.62	101 (Item)
		2006-07	39	39622.65	4	835.30	35	38787.35	68604.97 (Amt.)
8	Urban Development	Up to 2005-06	802	17187.27	151	873.54	651	8450.73	1226 (Item)
		2006-07	600	34444.79	25	16148.80	575	18295.99	26746.72 (Amt.)
9	Other	Up to 2005-06	58	28552.86	11	26393.79	47	2159.07	1 (Item)
		2006-07	157	41038.53	48	2871.42	109	38167.00	21.38 (Amt.)
10	Land Reform	Up to 2005-06	2	24.36	2	24.36	-	-	156 (Item)
		2006-07	1	21.38	-	-	1	21.38	40326.07 (Amt.)
Grand Total			2252	426006.49	509	138346.57	1743	287659.92	1743(Item) 287659.81 (Amt.)

Appendix - 2.1
(Reference to paragraph: 2.3.1; page 34)
Areas in which savings exceeding Rs 10 crore occurred

(Rupees in crore)

Grant No. & Name	Major Head & Minor head	Area in which major saving occurred.	Savings	Main reasons for savings
10 Energy Department	2801-80-101-0001	Grants-in-aid to Jharkhand State Electricity Board (N.P)	85.35	Rs 85.35 crore attributed to non-drawal of fund due to lack of time and non receipt of utilisation certificate from the board
	2801-05-796-0201	Grants to Jharkhand State Electricity Board for Accelerated Power Development Programme (P)	66.00	Rs 66.00 crore attributed to non-release of fund from Government of India.
	800-0101	As above	34.00	Rs 34.00 crore attributed to non-release of fund from Government of India.
	6801-796-0202	Loans to Jharkhand State Electricity Board (P)	323.39	Rs 291.00 crore attributed to non-sanction of loan by REC in time and Rs 32.39 crore non-availability of utilization certificate for previous year.
	6801-0101	Loans to Jharkhand State Electricity Board (P)	154.61	Rs 146.00 crore attributed to non-sanction of loans in time by R.E.C.L and Rs 8.61 crore non-availability of utilization certificate for previous year.
	6801-202-0101	Loans to Patratu Thermal Power Station (P)	13.00	Non-utilisation of the entire provision attributed to non drawal of fund due to non- receipt of utilization certificate for previous year.
	6801-796-0201	Loans to Jharkhand State Electricity Board under Accelerated Power Development Programme (P)	198.00	Non-utilisation of the entire provision attributed to non drawal of fund from the Government of India and non-sanction of loan for Financial Institutions (REC).
	0203	Loans to Jharkhand State Hydro Electricity Board (P)	18.00	Incomplete Hydral Project.
	6801-800-0002	Payment of arrears against Boards issued by Electricity Boards (N.P).	211.53	Reasons not intimated.
	6801-800-0102	Loans to Jharkhand State Electricity Board Under Accelerated Power Development Programme (P)	102.00	Non-utilisation of entire provision attributed to non-release of fund from the Government of India and non sanction of loan from REC.
20 Health, Medical Education & Family Welfare Department	2210-01-001-0101	Superintendence (P)	16.13	(i) delay in preparation of estimates of scheme (Rs 11.13 crore) (ii) providing fund for other units (Rs 5.00 crore)
	0013	Sadar Hospitals (N.P)	16.12	Rs 1.70 crore was attributed to providing fund for other unfits. Reasons for balance amount not intimated.
	103-0001	Primary Health Centre (N.P)	37.79	Providing fund for 2 nd supplementary (Rs 11.45 crore) and lack of investigation report (Rs. 1.50 crore) Reasons for the balance amount not intimated.
	0003	Additional Primary Health Centre (NP)	20.67	Reasons not intimated.
	0006	Strengthening of Primary Health structure (NP)	58.49	Rs 18.50 crore attributed to excess provision of fund reasons for Rs 39.99 crore has not been intimated
	04-105-0006	Rajendra Institute of Medical Science, Ranchi (N.P)	26.22	Rs 26.22 crore was attributed to less release of fund Grants -in-aid.

	2211-101-0402	Health Sub Centres (CPS)	69.99	Rs 32.14 crore was attributed to non receipt of demand letter. Reasons for the balance amount not intimated
	105-0401	Compensation regarding District level Medical College post Delivery Programme (CPS)	10.99	Rs 10.99 crore attributed to imposition of ban on expenditure by the Government of India.
	4210-02-103-0111	Buildings, Primary Health Centre (P)	11.30	Rs 7.84 crore was attributed to non-receipt of estimate. Reasons for Rs 3.45 crore has not been intimated
	0104	Buildings Sadar Hospital (P)	33.29	Rs 32.99 crore attributed to non sanction of loan from HUDCO and NABARD. Reason for balance amount not intimated.
41 Road Construction Department	5054-03-337-0101	Major Roads current Scheme (P)	71.73	Reason not intimated
	796-0201	Major Roads non Scheme (P)	199.54	Reason not intimated
	0202 A	Major Roads new Scheme (P)	49.07	Reason not intimated
	0203	0203 Bridges (P)	23.17	Reason not intimated
	0204	Bridges New Scheme (P)	10.93	Reason not intimated.
42 Rural Development Department	2501-06-101-0101	Swarnajayanti Gram Swarojgar Yojana (CSS).	16.65	Reason not intimated.
	796-0201	Swarnajayanti Gram Swarojgar Yojanas (CSS).	34.92	Reason not intimated.
	2505-01-702-0102	Indira Awas Yojanas (CSS)	22.65	Reason not intimated.
	2505-01-702-0111	Overall rural Employment Programme (CSS)	73.36	Rs 11.25 crore attributed to excess provisions of fund. Reasons for balance amount not intimated.
	2505-01-796-0201	Overall Rural Employment Proramme (CSS)	100.22	Reasons not intimated
	2505-01-796-0206	Overall Rural Employment Scheme (P)	11.26	Rs 7.00 crore attributed to excess provision of fund and Rs 4.09 crore due to non release of required centre share. Reasons for balance amount not intimated.
	0209	Overall Rural Employment Scheme (CSS)	19.41	Rs 10.00 crore attributed to excess provision of fund and Rs 9.41 crore due to non release of central share.
	2515-001-0003	District Panchayat Establishment (NP)	14.25	Reasons not intimated
	0113	Grants to Gram Sabha (P)	14.54	Rs 10.55 crore attributed to excess allotment of fund. Reasons for Rs 3.99 crore not intimated.
	2505-01-702-0101	Overall Rural Employment Programme (CSS)	80.00	Reasons not intimated
	0401	Pradhan Mantri Gramodaya Yojana (CPS)	25.53	Reasons not intimated
	796-202	Indira Awas Yojana (CSS)	69.76	Reasons not intimated
	0401	Pradhan Mantri Gramodaya Yojana (CPS)	7600.00	Reasons not intimated
	2515-001-0108	Assistance to Panchayati Raj Institution (P)	53.39	Reasons not intimated
	796-0207	Assistance to Panchayati Raj Institution (P)	42.81	Reasons not intimated
	4515-103-0101B	Pradhan Mantri Gram Saddak Yojana (P)	27.00	Reasons not intimated
	0110	Chief Minister Gram Setu Yojana (P)	26.23	Rs 0.75 crore due to excess provision. Reasons for balance amount not intimated.
	796-0203	Minimum Needs Programme (P)	24.94	Rs 1.24 crore attributed to reduction in working force. Reasons for balance amount not intimated.
	0204	Chief Minister Gram Setu Yojana (P)	21.20	Reasons not intimated.
	0208	Implementation of scheme on the recommendation of members of the Legislative Assembly (P)	14.64	Reasons not intimated.

44 Secondary, Primary and Mass Education Department	2202-01-101-0001	Government Primary and Middle School.(NP)	104.84	Reasons not intimated.
	0101	Govt. Primary and Middle School.(CSS)	36.55	Reasons not intimated.
	0206	Govt. Primary and Middle School.(P)	23.10	Reasons not intimated.
	2202-01-101-0003	Strengthening of Primary Education infrastructure (NP)	107.82	Reasons not intimated.
	02-109-0006	Strengthening of Primary Education infrastructure (NP)	118.06	Reasons not intimated.
	4202-01-202-0101	Construction of Model School under special integrated scheme (P)	16.00	Reasons not intimated.
	796-0201	Construction of Model School under special integrated scheme (P)	16.50	Reasons not intimated.
48 Urban Development and Housing Department	2217-05-191-0601	Central Share for Centrally sponsored JNNURM/UIDSSMT etc (CSS)	70.00	Reasons not intimated.
	80-191-0102	Central Share for Centrally sponsored JNNURM/UIDSSMT etc (P)	70.00	Rs 51.50 crore attributed to non-receipt of sanction of scheme for Central Govt. Re-appropriation of Rs 18.50 crore was due to less provision of fund.
	6215-01-796-0202	Loans to urban local bodies for supply of drinking water (P)	15.21	Rs 9.75 crore due to non-receipt of sanction for Central Government Reasons for balance amount not intimated.
	4217-60-190-0113	Central Grants for development of Capital Ranchi (P)	50.00	Non-finalisation of DPR
51 Welfare Department	2225-02-796-0220	TASP special central assistance (P)	55.84	Rs 54.07 crore due to non passing of bill by Treasury. Reasons for balance amount not intimated.
	2235-02-102-0602	Integrated Child Development Scheme (CSS)	25.19	Reasons not intimated.
	0614	Integrated Child Development Scheme (CSS)	31.09	Reasons not intimated.
	4225-02-796-0202	Article 275 (I) of the Constitution (P)	19.49	Reasons not intimated.

Appendix – 2.2
(Reference to paragraph: 2.3.1; page 34)
Savings exceeding 25 per cent of provision

(Rupees in crore)

Sl. No.	Revenue Voted	Provision	Saving	Percentage
1	2- Animal Husbandry Department	138.26	67.42	49
2	3- Building Construction Department	129.02	67.06	52
3	7- Vigilance	6.43	2.39	37
4	8- Civil Aviation Department	97.81	31.32	31
5	10- Energy Department	437.86	191.09	44
6	17- Finance (Commercial Tax) Department	21.00	6.61	31
7	20- Health, Medical Education and Family Welfare Department	840.15	449.62	54
8	23- Industry Department	169.82	48.89	29
9	25- Institutional Finance and Programme Implementation Department	3.35	2.03	61
10	29- Mines and Geology Department	19.93	8.61	43
11	34- Jharkhand Public Service Commission	7.58	3.12	41
12	39- Disaster Management Department	358.40	197.66	55
13	40- Revenue and Land Reform Department	160.87	47.73	30
14	42- Rural Development Department	1295.86	764.26	59
15	43- Science and Technology Department	116.10	69.05	59
16	48- Urban Development and Housing Department	334.51	179.69	54
17	51- Welfare Department	745.26	206.71	28
18	52- Art, Culture and Youth Welfare Department	24.12	14.43	60
Total		4906.33	2357.69	
Capital (Voted)				
1	1- Agriculture Department	4.10	1.10	27
2	9- Cooperative Department	90.46	77.65	86
3	10- Energy Department	1317.33	929.88	71
4	20- Health Medical Education & Family Welfare Department	147.49	94.46	64
5	23- Industry Department	4.75	2.49	52
6	27- Law Department	6.28	1.81	29
7	36- Drinking Water and Sanitation Department	306.84	159.56	52
8	41- Road Construction Department	520.10	390.95	75
9	44- Primary, Secondary & Mass Education Department	32.50	32.50	100
10	47- Transport Department	45.15	44.82	99
11	48- Urban Development and Housing Department	132.20	65.51	50
12	49- Water Resources Department	364.50	141.06	39
13	50- Minor Irrigation Department	137.64	88.45	64
14	51- Welfare Department	63.87	23.27	36
Total		3173.21	2053.51	
Grand Total		8079.54	4411.20	

Appendix – 2.3
(Reference to paragraph: 2.3.1; page 34)
Savings exceeding Rs 1 crore and 10 per cent of provision
(Rupees in crore)

Sl. No.	Revenue Voted	Provision	Saving
1	1- Agriculture Department	199.17	47.02
2	2- Animal Husbandry Department	138.26	67.42
3	3- Building Construction Department	129.02	67.06
4	4- Co-ordination and Cabinet Secretariat Department	19.85	4.00
5	6- Election	11.18	1.99
6	7-Vigilance	6.43	2.39
7	8- Civil Aviation Department	97.81	31.32
8	9-Co-Operative Department	136.85	29.83
9	10- Energy Department	437.86	191.09
10	11-Excise and Prohibition Department	9.08	1.60
11	12- Finance Department	20.44	3.14
12	15- Pension	791.14	112.17
13	17- Finance (Commercial Tax) Department	21.00	6.61
14	18- Food Supply and Commercial Department	71.26	12.36
15	19- Forest and Environment Department	217.06	34.73
16	20- Health, Medical Education and Family Welfare Department	840.15	449.62
17	22- Home Department	1120.74	248.30
18	23- Industry Department	169.82	48.89
19	25- Institutional Finance and Programme Implementation Department	3.35	2.03
20	26- Labour, Employment and Training Department	218.47	33.02
21	29- Mines and Geology Department	19.93	8.61
22	33- Personnel and Administrative Reforms Department	9.19	1.61
23	34- Jharkhand Public Service Commission.	7.58	3.12
24	35- Planning and Development Department	332.75	62.61
25	39- Disaster Management Department	358.40	197.66
26	40- Revenue and Land Reform Department	160.87	47.73
27	41- Road Construction Department	127.81	20.10
28	42- Rural Development Department	1295.86	764.26
29	43- Science and Technology Department	116.10	69.05
30	44- Secondary, Primary and Mass Education Department	1852.62	387.10
31	48- Urban Development and Housing Department	334.51	179.69
32	49- Water Resources Department	150.83	21.34
33	51- Welfare Department	745.26	206.71
34	52- Art, Culture and Youth Welfare Department	24.12	14.43
	Total	10194.77	3378.61

Capital (Voted)			
1	1- Agriculture Department	4.10	1.10
2	3- Building Construction Department	74.25	13.07
3	9- Co-operative Department	90.46	77.65
4	10-Energy Department	1317.33	929.88
5	12- Finance Department	17.00	3.03
6	20- Health Medical Education & Family Welfare Department	147.49	94.46
7	22- Home Department	54.36	12.09
8	23- Industry Department	4.75	2.49
9	27-Law Department	6.28	1.81
10	30- Minority Welfare Department	12.70	2.09
11	36- Drinking Water and Sanitation Department	306.84	159.56
12	41- Road Construction Department	520.10	390.95
13	42- Rural Development Department	603.43	130.44
14	44- Primary, Secondary & Mass Education Department	32.50	32.50
15	46- Tourism Department	21.00	5.16
16	47- Transport Department	45.15	44.82
17	48- Urban Development and Housing Department	132.20	65.51
18	49- Water Resources Department	364.50	141.06
19	50- Minor Irrigation Department	137.64	88.45
20	51- Welfare Department	63.87	23.27
21	52- Art ,Culture & Youth Welfare Department	212.58	46.36
Total		4168.53	2265.75
Grand Total		14363.30	5644.36

Appendix – 2.4
(Reference to paragraph: 2.3.2; page 34)
Excess provision/allotment of fund

(Rupees in lakh)

Sl. No.	Grant / Appropriation Number Head of Account	Total Grant	Total Expenditure	Saving	Saving due to excess provision of fund
1	Grant No.2 2403-105-0002	92.17	65.55	26.62	14.00
2	Grant No.9 2425-001-0001	137.10	97.40	39.70	4.37
3	2425-001-0002	981.06	752.36	228.70	15.97
4	2425-004-0001	37.64	15.08	22.56	0.78
5	Grant No.20 2210-103-0006	6399.00	550.00	5849.00	1850.00
6	Grant No. 27 2014-114-0003	210.00	127.23	82.77	15.25
7	Grant No.34 2051-102-0001	758.29	446.61	311.68	179.29
8	Grant No.35 3454-111-0001	173.61	149.85	23.76	13.78
9	3454-204-0001	127.54	91.11	36.43	23.43
10	Grant No.39 2245-05-101-0001	3243.00	3196.21	46.79	45.50
11	Grant No.42 2501-101-0102	996.11	12.18	983.93	13.00
12	2505-702-0107	1583.50	645.62	937.88	500.00
13	2505-702-0111	7846.15	510.00	7336.15	1125.00
14	2505-796-0206	1971.94	845.83	1126.11	700.00
15	2505-796-0209	8890.08	6949.06	1941.02	1000.00
16	2515-102-0113	6324.12	4869.87	1454.25	1055.12
17	Grant No.48 2215-02-191-0103	111.00	33.10	77.90	9.07
18	2251-092-0002	98.38	73.80	24.58	11.76
19	Grant No.50 4702-102-0101A	3936.42	1034.41	2902.01	1422.13
20	4702-796-0204	3971.22	2023.49	1947.73	1934.89
21	Grant No.51 2225-277-0011	3751.80	3076.11	675.69	593.48
22	2225-796-0211	103.00	54.78	48.22	3.48
23	2225-02-796-0201	885.00	398.53	486.47	11.47
24	2225-796-0203	70.00	19.32	50.68	47.18
25	2225-796-0205	80.00	34.99	45.01	11.01
26	2225-796-0206	60.00	12.33	47.67	19.88
27	2225-800-0101	161.00	86.34	74.66	27.08
28	2235-02-106-0001	198.27	159.31	38.96	14.68
29	2251-090-0006	160.07	121.18	38.89	31.13
30	4225-01-796-0202	170.00	151.99	18.01	17.78
31	4225-02-277-0101	130.00	52.61	77.39	27.39
32	Grant No.52 4202-04-800-0102	300.00	23.01	276.99	110.00
Total		53957.47	26679.26	27278.21	10847.90

Appendix – 2.5
(Reference to paragraph: 2.3.2; page 34)
Cases of persistent saving exceeding Rs 2 crore and 10 per cent of provision
in each case

Sl. No.	Number and name of Grant/ Appropriation	Saving (Amount in crore of rupees) and its percentage to provision in bracket		
		2004-05	2005-06	2006-07
	REVENUE VOTED			
1	1- Agriculture Department	49.26(33)	31.55(19)	47.02(24)
2	2-Animal Husbandry Department	19.94(27)	17.54(22)	67.42(49)
3	3-Building Construction Department	12.47(22)	16.93(18)	67.06(52)
4	8-Civil Aviation Department	41.32(92)	54.90(81)	31.32(32)
5	10- Energy Department	69.71(16)	87.69(16)	191.09(44)
6	15-Pension	307.71(33)	117.48(15)	112.17(14)
7	17-Finance (Commercial Tax) Department	5.26(24)	4.88(25)	6.61(31)
8	18- Food Supply and Commercial Department	42.40(54)	7.80(11)	12.36(17)
9	19-Forest and Environment Department	23.33(12)	33.64(17)	34.73(16)
10	20-Health, Medical Education and Family Welfare Department	82.63(18)	359.07(43)	449.62(54)
11	22-Home Department	160.71(20)	275.13(24)	248.30(22)
12	23-Industry Department	96.47(58)	39.97(26)	48.89(29)
13	26-Labour, Employment and Training Department	33.04(26)	17.10(11)	33.02(15)
14	29-Mines and Geology Department	7.75(38)	4.50(25)	8.61(43)
15	40-Revenue and Land Reform Department	27.62(23)	19.69(16)	47.73(30)
16	41-Road Construction Department	20.57(20)	14.10(11)	20.10(16)
17	42-Rural Development Department	746.33(60)	564.20(53)	764.26(59)
18	43-Science and Technology Department	79.77(60)	32.57(25)	69.05(59)
19	44-Secondary, Primary and Mass Education Department	230.84(16)	148.00(10)	387.10(21)
20	49-Water Resources Department	6.95(31)	21.47(19)	21.34(14)
21	51-Welfare Department	145.16(27)	100.87(17)	206.71(28)
22	52- Art, Culture and Youth Welfare Department	10.15(58)	7.41(46)	14.43(60)
	Capital Voted			
1	3- Building Construction Department	43.55(62)	22.33 (32)	13.07(18)
2	30- Minorities Welfare Department	4.55(46)	3.77(31)	2.09(16)
3	36- Drinking Water & Sanitation Department	89.84(43)	67.63(26)	159.56(52)
4	42- Rural Development Department	234.01(30)	101.87(15)	130.44(22)
5	47- Transport Department	51.40(98)	52.65(84)	44.82(99)
6	48- Urban Development and Housing Department	67.03(51)	25.00(19)	65.51(50)
7	49-Water Resources Department	137.19(37)	81.62(21)	141.06(39)
8	50- Minor Irrigation Department	44.11(62)	25.84(38)	88.45(64)
9	52- Art, Culture and Youth Welfare Department	73.17(75)	12.09(10)	46.36(22)
	Total	773.42	500.02	1176.77

Appendix – 2.6
(Reference to paragraph: 2.3.5; page 36)
Cases where supplementary provision proved unnecessary

(Rupees in lakh)

SI. No.	Number and name of Grant/ Appropriation	Supplementary Grant/ Appropriation	Saving
REVENUE			
1	1- Agriculture Department	510.79	4702.13
2	2- Animal Husbandry Department	100.77	6742.19
3	3- Building Construction Department	1019.12	6705.59
4	4- Cabinet Secretariat and Co-ordination	363.84	400.37
5	5- Governor Secretariat	34.30	81.61
6	7-Vigillence	11.14	239.61
7	9- Co-operative Department	1974.48	2982.60
8	11- Excise and Prohibition Department	3.92	160.36
9	12- Finance Department	15.10	314.03
10	16- National Savings	39.54	59.52
11	18-Food Supply and Commerce Department	1.50	1235.89
12	19- Forest and Environment Department	877.30	3473.38
13	20-Health,Medical Education and Family Welfare Department	1161.10	44962.31
14	22- Home Department	3883.85	24829.52
15	23- Industry Department	290.13	4888.82
16	25- Institutional Finance and Programme Implementation Department	47.87	203.46
17	27- Law Department	225.64	566.98
18	29- Mines and Geology Department	164.73	861.42
19	33- Personnel and Administrative Reforms Department	160.13	161.14
20	34- Jharkhand Public Service Commission	32.50	311.68
21	35- Planning and Development Department	19.15	6261.12
22	36- Drinking Water and Sanitation Department	27.97	777.42
23	37- Rajbhasa Department	25.23	95.55
24	40- Revenue and Land Reform Department	738.81	4773.31
25	41- Road Construction Department	32.78	2010.40
26	42- Rural Development Department	15041.55	76425.75
27	43- Science and Technology Department	310.76	6904.63
28	44- Secondary, Primary and Mass Education Department	6449.13	38710.08
29	46- Tourism Department	11.87	87.54
30	48-Urban Development and Housing Department	1295.06	17969.04
31	51- Welfare Department	3459.82	20670.80
32	52- Art, Culture and Youth Welfare Department	436.52	1443.05
CAPITAL			
1	3-Building Construction	424.74	1307.13
2	9-Co-operative Department	1046.26	7764.87
3	20-Health,Medical Education and Family Welfare Department	400.00	9445.74
4	27-Law Department	27.64	180.82
5	22- Home Department	633.75	1209.27
6	42- Rural Development Department	10.96	13044.41
7	44-Secondary, Primary and Mass Education Department	50.00	3249.70
8	50- Minor Irrigation Department	1344.27	8844.60
9	51- Welfare Department	289.24	2327.19
Total		42993.26	327385.03

Appendix – 2.7
(Reference to paragraph: 2.3.5; page 36)
Cases where supplementary provision proved excessive

SI. No.	Number and name of Grant/ Appropriation	Supplementary Grant/ Appropriation	Saving
REVENUE SECTION		<i>(Rupees in lakh)</i>	
1	10- Energy Department	28788.73	19109.24
2	21-Higher Education Department	4240.90	1259.40
3	24-Information and Public Relation Department	575.60	106.48
4	28-High Court of Jharkhand	74.00	45.54
5	32-Legislative Council	270.66	87.79
6	49- Water Resources Department	3759.30	2134.08
7	50-Minor Irrigation Department	1170.61	279.06
Total		38879.80	23021.59

Appendix – 2.8
(Reference to paragraph: 2.3.5; page 36)
Cases where supplementary provision proved insufficient

SI No.	Grant/ Appropriation No.	Original Grant/ Appropriation	Supplem-entary Provision	Actual Expenditure	Excess Expenditure
<i>(Rupees in crore)</i>					
Revenue Section					
1	13- Interest Payment	777.41	2.39	1613.38	833.58
2	38-Registration Department	6.00	3.85	9.86	0.01
Capital Section					
3	14-Repayment of Loan	373.82	50.00	836.10	412.28
Total		1157.23	56.24	2459.34	1245.87

Appendix - 2.9
(Reference to paragraph: 2.3.6; page 36)
Anticipated savings exceeding Rupees one crore not surrendered

SI. No	Number and name of the Grant/ Appropriation	Saving	Amount Surrendered	Un-surrendered savings	Percentage not surrendered
	Revenue (Voted)	<i>(Rupees in crore)</i>			
1	1-Agriculture Department	47.02	45.68	1.34	3
2	2-Animal Husbandry Department	67.42	62.13	5.29	8
3	3- Building Construction Department	67.06	61.39	5.67	8
4	4-Cabinet Co-ordination Secretariat Department	4.00	1.68	2.32	58
5	12- Finance Department	3.14	1.49	1.65	53
6	15-Pension	112.17	0.00	112.17	100
7	19-Forest and Environment Department	34.73	11.24	23.49	68
8	20-Health, Medical Education and Family Welfare Department	449.62	257.57	192.05	43
9	21-Higher Education Department	12.59	0.00	12.59	100
10	22- Home Department	248.30	228.19	20.11	8
11	23-Industry Department	48.89	47.39	1.50	3
12	25- Institutional Finance and Programme Department	2.03	0.00	2.03	100
13	26- Labour, Employment and Training Department	33.02	13.28	19.74	60
14	29- Mines and Geological Department	8.61	3.45	5.16	60
15	35- Planning and Development Deptt.	62.61	52.66	9.95	16
16	40- Revenue and Land Reform Department	47.73	38.40	9.33	20
17	42- Rural Development Department	764.26	234.03	530.23	69
18	43- Science and Technology Department	69.05	46.32	22.73	33
19	44- Secondary, Primary and Mass Education Department	387.10	2.85	384.25	99
20	48- Urban Development and Housing Department	179.69	93.86	85.83	48
21	49- Water Resources Department	21.34	12.39	8.95	42
22	51- Welfare Department	206.71	115.13	91.58	44
23	52- Art, Culture and Youth Welfare	14.43	0.27	14.16	98
	Capital (Voted)				
1	3- Building Construction Department	13.07	12.46	0.61	5
2	9- Co-operative Department	77.65	47.93	29.72	38
3	10- Energy Department	929.88	813.00	116.88	13
4	12- Finance Department	3.03	2.33	0.70	23
5	20- Health, Medical Education and Family Welfare Department.	94.46	72.92	21.54	23
6	22- Home Department	12.09	7.84	4.25	35
7	30- Minority Welfare Department	2.09	0.20	1.89	90

8	41- Road Construction Department	390.95	370.94	20.01	5
9	42- Rural Development Department	130.44	32.54	97.90	75
10	44- Secondary, Primary and Mass Education Department	32.50	0.00	32.50	100
11	46- Tourism Department	5.16	0.00	5.16	100
12	47- Transport Department	44.82	0.00	44.82	100
13	48- Urban Development and Housing Department	65.51	41.84	23.67	36
14	49- Water Resources Department	141.06	49.17	91.89	65
15	50- Minor Irrigation Department	88.45	67.02	21.43	24
16	52- Art, Culture and Youth Welfare	46.36	4.10	42.26	91
Total		4969.04	2851.69	2117.35	

Appendix - 2.10
(Reference to paragraph: 2.3.6; page 36)
Surrender on 31 March 2007

(Rupees in thousand)

Grant No.	Revenue	Capital	Total
1	456797	11000	467797
2	617958	9729	627687
3	613917	124565	738482
4	16757	0	16757
6	22951	0	22951
7	23559	0	23559
8	337502	0	337502
9	293832	479250	773082
10	1901561	8130000	10031561
11	20162	0	20162
12	14945	23313	38258
13	7946	0	7946
14	0	27878	27878
16	5952	0	5952
17	66208	0	66208
18	116036	0	116036
19	103857	0	103857
20	2508732	729179	3237911
22	2281906	78425	2360331
23	473913	24850	498763
24	10633	0	10633
26	132789	0	132789
27	49822	17974	67796
28	3030	0	3030
29	34530	0	34530
30	3289	2030	5319
31	4055	0	4055
32	7192	615	7807
33	13902	0	13902
34	30948	0	30948
35	526610	0	526610
36	70124	1236394	1306518
37	8696	0	8696
38	1354	0	1354
39	1974305	0	1974305
40	157683	10	157693
41	269767	3709401	3979168
42	1043758	325415	1369173
43	444227	0	444227
44	28466	0	28466
46	399	0	399
48	938645	418424	1357069
49	123857	491746	615603
50	19182	612434	631616
51	838786	231806	1070592
Total	16620540	16684438	33304978

Surrendered before 31 March 2007			
2	3355	0	3355
19	8583	0	8583
20	66987	0	66987
36	0	376000	376000
40	226322	0	226322
42	1296533	0	1296533
43	19000	0	19000
50	0	57791	57791
51	312553	0	312553
52	2700	41000	43700
Total	1936033	474791	2410824
Grand Total	18556573	17159229	35715802

Appendix - 2.11
(Reference to paragraph: 2.3.6; page 36)
Amount surrendered during March 2007 exceeding Rupees one crore
(Rupees in crore)

Sl. No.	Grant No. & Name	Grant/ Appropriation	Amount Surrendered
1	1. Agriculture Department	Revenue Voted	45.68
2	2. Animal Husbandry Department	Revenue Voted	61.80
3	3. Building Construction Department	Revenue Voted Capital Voted	61.39 12.46
4	6. Election	Revenue Voted	2.30
5	9. Co-operative Department	Revenue Voted Capital Voted	29.38 47.93
6	10. Energy Department	Revenue Voted Capital Voted	190.16 813.00
7	11. Excise and Prohibition Department	Revenue Voted	2.02
8	12. Finance Department	Revenue Voted Capital Voted	1.49 2.33
9	17- Finance (Commercial Tax) Department	Revenue Voted	6.62
10	18. Food Supply and Commercial Department	Revenue Voted	11.60
11	19. Forest and Environment Department	Revenue Voted	10.39
12	20. Health, Medical Education and Family Welfare Department	Revenue Voted Capital Voted	250.87 72.92
13	22- Home Department	Revenue Voted Capital Voted	228.19 7.84
14	23. Industry Department	Revenue Voted Capital Voted	47.39 2.49
15	26. Labour, Employment and Training Department	Revenue Voted	13.28
16	27. Law Department	Revenue Voted Capital Voted	4.98 1.80
17	29. Mines and Geology Department	Revenue Voted	3.45
18	33. Personnel and Administrative Reforms Department	Revenue Voted	1.39
19	34. Jharkhand Public Service Commission	Revenue Charged	3.09
20	35. Planning and Development Department	Revenue Voted	52.66
21	36. Drinking Water and Sanitation Department	Revenue Voted Capital Voted	7.01 161.24
22	39. Disaster Management Department	Revenue Voted	197.43
23	40. Revenue and Land Reform Department	Revenue Voted	38.27
24	41. Road Construction Department	Revenue Voted Capital Voted	26.98 370.94
25	42. Rural Development Department	Revenue Voted Capital Voted	137.63 32.54
26	43. Science and Technology Department	Revenue Voted	44.42
27	44- Secondary, Primary and Mass Education Department	Revenue Voted	2.85
28	48- Urban Development and Housing Department	Revenue Voted Capital Voted	93.86 41.84
29	49. Water Resources Department	Revenue Voted Capital Voted	12.39 49.17
30	50. Minor Irrigation Department	Revenue Voted Capital Voted	1.92 61.24
31	51. Welfare Department	Revenue Voted Capital Voted	115.13 23.18
Total			3406.94

Appendix – 2.12
(Reference to paragraph: 2.4; page 37)
Excess surrender than savings

(Rupees in lakh)

SI. No	Grant / Appropriation No.	Provision	Saving	Surrender	Excess Surrendered
Revenue Section					
1	6 - Election	1118.29	199.40	229.51	30.11
2	11- Excise and Prohibition Department	907.75	160.36	201.62	41.26
3	17- Finance (Commercial Tax) Department	2099.95	660.98	662.08	1.10
4	32. Legislative Council	13.92	3.76	6.15	2.39
5	41. Road Construction Department	12780.60	2010.40	2697.67	687.27
Capital Head					
1	36- Drinking Water and Sanitation Department	30684.00	15956.39	16123.94	167.55
Total		47604.51	18991.29	19920.97	929.68

Appendix 2.13
(Reference paragraph 2.4; page 37)
Surrender in spite of Excess Expenditure

(Rupees in lakh)

SI No.	Grant/Appropriation No.	Provision	Excess Expenditure	Surrender
Revenue Section				
1	13- Interest Payment	77979.34	83358.32	79.46
2	38. Registration Department	985.65	0.81	13.54
Capital Section				
1	14- Repayment of Loan	42381.77	41227.75	278.78
Total		121346.76	124586.88	371.78

Appendix – 2.14
(Reference to paragraph: 2.5; page 37)

Excessive/unnecessary re-appropriation of funds

(Rupees in lakh)

Sl. No.	Grant No.	Major head affecting the grant	Original	Supplementary	Re-appropriation/ surrender	Total grant	Expenditure	Amount of Final Savings (-)/ Excess (+)
1	3	4216-01-700-0101	100.00	-	(-)88.30	11.70	58.96	(+)47.26
2	3	4216-01-796-0202	100.00	-	(-)67.47	32.53	123.43	(+)90.90
3	6	2015-105-0002	0.02	414.98	(-)73.43	341.57	372.54	(+)30.97
4	8	3053-02-102-0201	6000.00	-	(-)2462.01	3537.99	3780.88	(+)242.89
5	11	2039-001-0002	740.42	-	(-)150.76	589.66	631.55	(+)41.89
6	22	2055-001-0001	6600.65	30.67	(-)5121.74	1509.58	1834.57	(+)324.99
7	22	2055-109-0001	42139.25	256.00	(-)5812.11	36583.14	37625.77	(+)1042.63
8	27	2014-105-0001	6363.10	35.00	(-)292.67	6105.43	6159.72	(+)54.29
9	36	4215-01-796-0105	1105.00	-	(-)676.45	428.55	801.07	(+)372.52
10	41	3054-03-337-0001	7400.00	-	(-)1651.68	5748.32	6328.37	(+)580.05
11	41	3054-80-001-0008	956.30	0.22	(-)237.04	719.48	1046.80	(+)327.32

Appendix – 2.15
(Reference to paragraph: 2.6; page 37)
Statement of unreconciled expenditure

(Rupees in crore)

Sl. No.	Department	Units	Amount
1	Finance Department	71	746.53
2	Human Resources Department	817	1746.36
3	Transport Department	10	189.16
4	Revenue & Land Reforms	36	233.62
5	Law Department	19	77.00
6	Road & Building Construction Department	08	27.39
7	Panchayati Raj	144	261.94
8	Water Resources Department	15	82.58
9	Forest and Environment Department	44	43.10
10	Energy Department	02	239.45
11	Stamp and Registration Department	12	1.16
12	Food Supply and Commerce Department	01	3.52
13	Mines & Geology	06	6.22
14	Police (Home) Department	33	796.62
15	Cabinet Sectt. Services	06	19.65
16	Medical and Public Health	85	402.34
17	Housing Department	22	102.56
18	Labour & Employment Department	08	21.41
19	Social Security and Welfare	62	401.57
20	Information & Publicity Department	04	19.16
21	Urban & Planning Development	07	7.44
22	Animal Husbandry (Fisheries) Department	38	27.77
23	Rural Development Department	16	301.26
24	Industry Department	418	120.33
25	Tourism Department	09	20.67
26	Agriculture Department	20	118.34
27	Census, Survey & Statistics	13	3.71
28	Administration	04	9.34
29	Sales Tax Department	01	13.56
30	Co-operative Department	04	2.53
31	Building Construction	01	00.29
32	Passport Organisation	01	00.08
33	Excise Department	40	49.66
34	Science & Technology	01	00.44
35	National Savings	04	3.10
36	Relief on natural calamities	02	159.11
Total		1984	6258.97

Appendix - 2.16
(Reference to paragraph: 2.7; page 37)
Expenditure on new services/ new instrument of
Services without budget provision

(Rupees in lakh)

SI. No.	Grants Appropriation Number/ Head of Account	Provision	Actual Expenditure	Excess
1	10 6801-800-0101	Nil	9465.00	9465.00
2	13 2049-01-115-0001	Nil	47.36	47.36
3	14 6003-101-0033	Nil	7589.09	7589.09
4	14 6003-101-0034	Nil	6286.59	6286.59
5	14 6003-106-0003	Nil	21153.22	21153.22
6	14 6003-110-0000	Nil	27975.00	27975.00
7	14 6004-07-107-0001	Nil	629.05	629.05
8	50 4702-799-0001	Nil	157.33	157.33
Total			73302.64	73302.64

Appendix - 3.1
(Reference to paragraph: 3.1.11.1; page 48)
Statement showing irregularities in MRs/MBs/Job Cards

Sl. No.	Name of works/ Panchayat/ Block/ District	Amount involved (Rs in lakh)	Remarks
1	Construction of pond at village Manjhgawan/ Manjhgawan/ Chainpur, Palamu	0.11	Labourers were shown paid (144 mandays) through undated MRs; no signature of JE/Supervisor/any responsible officer was available on MRs.
2	Construction of irrigation well/ Manjhgawan/	0.10	-do-
3	Construction of pond at Koshiyara village/Koshiyara/ Chainpur, Palamu	0.26	Labourers were shown paid (360 mandays) through undated MRs; no signature of JE/Supervisor/any responsible person was available on MRs.
4	Renovation of Ponds/Dewai/ Keredari, Hazaribagh	0.60	MRs (Rs. 1.34 lakh) more than the value of work done as per MB (Rs. 0.74 lakh)
5	Construction of pond at Koshiyara village/Koshiyara/Chainpur, Palamu	0.15	MRs were up to 29 May 2006, which was measured by JE on 15 June 2006. Subsequently, without engagement of any labour, Junior Engineer made entry of additional Rs 0.15 lakh on 25 June 2006 in the MB.
6	Construction of four harvesting tanks/Kusmatanr and Surunga/ Baliapur, Dhanbad	0.73	No work order, MRs, MBs and any other details of expenditure were shown to audit.
7	Construction of pond/Murkunda/ Gumla Sadar, Gumla	0.41	80 labourers were shown paid through 8 Muster Rolls (No. 266170 to 266177). Details like scheme no., date of work, date of payment, year, signature of BDO issuing the MRs, signature of JE, were not available Thus, MRs appears to false.
8	Repair of BANDH/Amboda/Gumla, Sadar, Gumla	0.26	60 labourers were shown paid through 6 Muster Rolls (No. 118730 to 118735). Details like scheme No., date of work, date of payment, signature of BDO issuing the MRs, signature of JE, were not available making MRs fake. The fact is also established that 4 blank MRs 118742 to 118745 were already got signed by the future recipients.
9	Construction of PCC road/ Chimisai/ Tantnagar, West Singhbhum	0.32	MRs of NREGS was used for payment shown in June and July 2005. which was much earlier than the NREGA came into its being.
10	Construction of pond at village Kauriya/Kauriya/Medininagar, Palamu	0.36	False 501 mandays shown in MB (711 as against 216 mandays as per MB). The estimated mandays was only 469 in the work.
11	Seven schemes of construction of irrigation well/Manjhgawan, Narsinghpur, Bansdih, Baron, Koshiyara/ Chainpur, Palamu	2.30	The MRs number 131507 to 10, 131527 to 31, 131033 to 037 were all appeared to be fake since there were lot of cuttings and overwriting in the date of work, amount, even the dates of 27-02-2007 to 31-02-2007 and also 26 January was included. In none of the MRs date of passing, total amount or date of payment was mentioned.

12	Construction of irrigation well in Kauriya/Kauriya/Medininagar, Palamu	0.21	Four MRs were used in which printed numbers (122511, 122588, 103705, and 103706) were cut off and handwritten numbers were given. There were cuttings in handwritten numbers also. Further, handwritten number 34005001-0034 was used for the period 19.01.2007 to 24.01.2007 where as 34005001-0033 was used for 20-02-2007 to 25-02-2007 in which the payment date was shown as 17-02-2007. There were lots of cuttings in the dates. Even payment @ Rs. 73/- as well as Rs. 100/- per day was shown to same labourer.
13	Const of Grade I Road/Baralota North/Medininagar, Palamu	0.11	Two MRs numbers 122682 and 683 were used but the number was changed with hand. These hand written numbers also cut and changed three times, moreover, no signature and date of payment was available.
14	NA/Murkunda and Amboa/Gumla	0.05	10 job card holders shown in Muster Rolls during June 2006 to March 2007 but job card holders neither demanded nor provided any job
15	Const of PCC road /Jhinkpani/Asura/ W Singbhum	0.78	MB showed the value of work as Rs1.50 lakh but muster rolls were for Rs 2.28 lakh indicating fake MRs.
16	Const. of Nahar /PuliaJhinkpani/Choya/ W singhbhum	0.07	The work shown completed on 11.11.2006 but iron rod was purchased on 10.1.07 for Rs 0.07 lakh
17	Const of PCC road/Jhinkpani /Asura/ W Singhbhum	1.08	As per MB of 15.12.2006 labour payment was for Rs.1.50 lakh whereas as per MR dated 18.8.2006 Rs.2.58 lakh
18	Const. of Pond/Sadar block/Kursi/ W Singhbhum	0.19	As per MB work done was for Rs 0.50 lakh but MR itself was for Rs 0.68 lakh
19	Const. of Pond/Sadar block/Kursi/ W Singhbhum	0.27	As per MB work done was for Rs 0.17 lakh but MR itself was for Rs 0.44 lakh
	Total	8.01	

Appendix - 3.2
(Reference to paragraph: 3.2.6.1; page 53)

Status of habitations

Authority which conducted the survey	Status of habitation as on April	Total No. of habitation	F.C Habitation	PC Habitations	NC Habitations	PC Habitations Covered during the year			NC habitation covered during the year		
						Target	Achievement	Per cent	Target	Achievement	Per cent
State Govt.	1.4.2003	120412	114067	4542	1803	-	-	-	-	-	-
IIPA	1.4.2003	120150	99238	5555	15357	-	-	-	-	-	-
	1.4.2004	120150	99238	5555	15357	-	985	-	-	1988	
	1.4.2005	120150	102211	4570	13369	1220	838	69	2970	1598	54
	1.4.2006	120150	104647	3732	11771	1717	-		3500	-	-
Total						2937	1823	62	6470	3586	55

(Source- Drinking Water and Sanitation Department, Jharkhand, Ranchi)

Appendix - 3.3
(Reference to paragraph: 3.2.7.1; page 54)
Target and achievement of the schemes

Name of programme	Year	Particulars of schemes	Target	Achievement		Per cent	
				Successful	Unsuccessful		
ARWSP	2002-03	Const. of DTW under different schemes	28477	24779	1681	87	
	2003-04	-do-	3658	2489	-	68	
	2004-05	-do-	9090	2905	388	32	
	2005-06	(i)-do-		24068	12212	1615	51
		(ii) Rain Water Harvesting		1394	998	-	72
		(iii) Water quality mapping		25751	0	-	Nil
		(iv) Pipe water supply in quality affected village/ habitations		4	0	-	Nil
(v) Hand pump Attachment for fluoride/ Arsenic removal			148	105	-	71	
No new target fixed for (Back log of 2005-06)	2006-07	(i) Const. of DTW under different schemes	9968	6160	982	62	
		(ii) Rain water Harvesting	396	396	-	100	
		(iii) Water quality mapping	25751	21777	-	85	
		(iv) Pipe water supply in quality affected village/ habitations	4	0	-	Nil	
		(v) H.P. Attachment	43	43	-	100	
MNP	2002-03	DTW under different schemes	15075	9736	1147	65	
	2003-04	-do-	11056	8664	856	78	
	2004-05	-do-	13180	8891	956	67	
	2005-06	-do-	5116	3796	434	74	
	2006-07	-do-	4711	604	94	13	

Appendix 3.4
(Reference to paragraph: 3.2.9; page 56)
Repair and maintenance (R&M) of non-functional DTWs

Year	OB			Repaired during the year			New Drilling	Total DTWs (4+8)	Total functional (2+7+8)	Fresh Break down during the year	Functional at the end of the year (10-11)
	Functional	Non-functional	Total	Special repair	Structural modification	Total					
1	2	3	4	5	6	7	8	9	10	11	12
2002-03	180750	48482	229232	8897	19981	28878	18277	247509	227905	16089	211816
2003-04	211816	35693	247509	4120	1931	6051	7339	254848	225206	13139	212067
2004-05	212067	42781	254848	204	16055	16259	11947	266795	240273	14652	225621
2005-06	225621	41174	266795	7139	0	7139	8522	275317	241282	10232	231050
2006-07	231050	44267	275317	4481	7395	11876	2270	277587	245196	14329	230867
Total				24841	45362	70203	48355			68441	

Appendix - 3.5
(Reference to paragraph: 3.2.10.1; page 57)

Physical and Financial progress of DTWS in Schools

(Rupees in lakh)

Year	Name of scheme	Physical Target	Achievement		Scheme	Allotment	Expenditure
			Successful	Unsuccessful			
2002-03	DTW in schools	ARWSP-297	229	41	ARWSP	56.26	50.42
		MNP - 677	569	89	MNP	177.71	137.87
	DTW in SC/ST school	112	84	-		30.13	22.24
2003-04			Nil	Nil			
2004-05	DTW in schools	ARWSP-2000	731	132		704.34	264.91
		P.M.A-2184	400	71		287.55	232.76
2005-06	Const. of DTW in Primary & Middle schools	1203	920	213	centre centre state	439.43 568.96 558.96	399.29 343.61 271.80
	New scheme for const. of DTW in primary & Middle school	3240	1386	147			
2006-07	-do-	-	62	9		40.13	34.73
			1411	224		235.35	222.58
	Total		5792	926		2659.39	1980.21

Appendix 3.6
(Reference to paragraph: 3.2.10.5; page 59)

Statement showing excess executed quantity than agreement quantity

Sl. No.	Name of the division	Name of the scheme	No. of agreement	No. of items	Excess quantity (in per cent)	Amount Paid (in Rupees)
1	Jamshedpur	S/R Phase III (02-03)	2	3	14.95 to 30	84809.00
2		S/R Phase II (02-03)	4	8	12.66 to 39.77	125371.40
3		F/L Hand Pump(04-05)	2	8	30 to 77.83	466765.0
4		Not covered school (03-04)	1	1	40.96	106227.00
5		SC/ST Tola (04-05)	2	3	22.45 to 93.13	285232.00
6		S/R in drought affected area (05-06)	7	10	16 to 98.38	477552.00
7		NC/PC tola 05-06	3	7	14 to 46	397480.00
8	KHUNTI	S/R(05-06 & 06-07)	5	10	18 to 102	501239.00
9		F/L Hand Pump(05-06)	1	2	18 to 52	52861.00
10		SC/ST Tola (04-05)	1	4	35.20 to 66	328199.00
11	GARHWA	SC/ST Tola (04-05)	4	6	29.54 to 55.36	276295.00
12		F/L Hand Pump(04-05)	1	6	16.50 to 41.66	8954.00
13		S/R Drought (05-06)	6	10	20 to 162	134360.00
14		NC/PC tola (05-06)	2	4	17 to 34	227631.00
15		S/R (02-03)	1	2	29.48	102599.00
	Total		42			3575574.40

Appendix - 3.7
(Reference to paragraph: 3.2.11.2; page 60)
Blockage in shape of materials (ARWSP)

Name of the division	Name of site a/c	Period since unutilized	Name of material	Quantity	Rate	Amount
					(In rupees)	
Tenughat	DTW under RGMS	10/01	65mm G.I. Pipe	100 Nos.	515.00	51500.00
	NC/PC	03/06	IM II- HP	6 sets	4806.00	28836.00
Godda	S/R to D/T	03/02	Tara Pump	79 sets	6650.00	525350.00
	-do-	03/05	65mm G.I Pipe	273 meters	158.22	43194.00
	NC/PC	04/06	32mm G.I. Pipe	3465 meters	105.54	365696.00
Ranchi (west)	S/M	04/05	50mm GI Pipe	3309 meters	225.26	745385.00
	F/L PMA	10/04	IM III HP	4 sets	5700.00	22800.00
	-do-	-do-	50mm GI pipe	11 meters	225.26	2478.00
Garhwa	DTW F/L	03/06	IM II F/L HP	31 sets	5079.00	157449.00
	-do-	04/06	32mm GI pipe	142 Nos.	316.62	44960.00
	Pratappur Rural W/S Scheme	3/06 to 5/06	150mm D.I. Pipe	1839.50 meters	1040.44	1913889.00
	-do-	-do-	100mm DI Pipe	5631 meters	691.80	3895526.00
Total						7797063.00

Blockage in shape of materials (MNP)

Name of the division	Name of site a/c	Period since unutilized	Name of material	Quantity	Rate	Amount	
					(In rupees)		
Tenughat	Tulbal W/S	04/02	100mm C.I Pipe	800 meters	368.07	294456.00	
	Jainamore W/S	04/02	-do-	769 meters	368.07	283046.00	
	Nawadih W/S	-do-	-do-	51.50 meters	368.07	18956.00	
	Peterwar W/S	-do-	125mm C.I pipe	579 meters	427.27	247389.00	
Godda	Mahagama W/S	02/03	100mm AC pressure pipe	1784.66 meters	46.00	82094.00	
	-do-	03/06	350mm CI pipe	192.5 meters	3198.76	615761.00	
	-do-	03/06	250mm CI pipe	92.5 meters	1968.05	182045.00	
	-do-	05/06	-do-	313.5 meters	1968.05	616984.00	
	-do-	07/06	100mm CI pipe	4506 meters	665.20	2997391.00	
	3 D/T in each Panchayat	03/02	Tara Pump	32 sets	6650.00	212800.00	
	10 th Finance Comm. D/T	01/03	65mm GI pipe	1116 meters	158.22	176574.00	
Garhwa	Garband W/S Scheme	materials purchased					9363914.00
					Total	15091410.00	
Total ARP + MNP			7797063 + 15100410		2,28,88,473		

Appendix - 3.8

(Reference to paragraph: 3.6.3.4; page 90)

**Position of staff of various cadres in the State Pollution Control Board as of
31 March 2007**

Sl. No.	Name of Post	Sanctioned Strength	Men-in-position	Shortfall
1	Sr. Environment Engineer	03	01	02
2	Environment Engineer	07	06	01
3	Assistant Environment Engineer	15	03	12
4	Junior Environment Engineer	19	09	10
5	Scientist E-I	01	-	01
6	Scientist C	02	01	01
7	Scientist B	04	-	04
8	Assistant Scientist Officer	14	04	10
9	Assistant Scientist	15	11	04
10	Research Assistant	03	02	01
11	Laboratory Assistant	13	03	10
12	Sample Collector	25	14	11
13	Regional Assistant cum Technician	21	13	08
14	Additional Secretary	01	-	01
15	Section Officer	03	02	01
16	Assistant	19	07	12
17	Stenographer	03	-	03
18	Senior Personal Assistant	01	-	01
19	Personal Assistant	03	01	02
20	Typist	11	08	03
21	Accountant	02	-	02
22	Accounts Clerk	09	04	05
23	Legal Clerk	01	-	01
24	Routine Clerk	07	03	04
25	Receptionist	01	-	01
26	Draftsmen	03	-	03
27	Anurekhak	04	01	03
28	Nil Mudrak	01	01	-
29	Daftary	01	01	-
30	Laboratory Attendant	04	01	03
31	Telex Machine Operator	01	-	01
32	Driver	09	08	01
33	Peon/Night Guard	42	31	11
	Total	268	135	133

Appendix - 3.9

(Reference to paragraph: 3.6.5; page 93)

Statement of non-levy of water cess

Sl. No.	Name of industries	Monthly consumption of water (In kilo litre)		Water cess paid up to	Water cess due (Month)	Amount (In rupees)		Total
		Industrial	Domestic			Industrial (5 paise/kl)	Domestic (2 paise/kl)	
1	S.N Boring Ltd. Ratu, Ranchi	331	26	Dec. 2005	15	248.25	7.80	265.05
2	H.E.C Ltd.	3114303	276041	March 2005	24	3737163.60	132499.68	3869663.28
3	MECON India Ltd.	0	98990	Only in March 2007	66 (from Sept. 2001)	0	130666.80	130666.80
4	MahaLaxmi Fiber India Ltd. Ranchi	2850	4151	Jan. 2006	14	1995	1162.28	3157.28
5	M/s Bharat Best Falia,	84	62	Oct. 2005	17	71.40	21.08	92.48
6	Bhawnathpur Lime Stone Mines, Garhwa	140	15725	March 2006	12	84	3774	3858
7	Rajhara Colliery,	5790	6770	Dec.1998	99	28660.50	13404.60	42065.10
8	Bansal Industrial Gasses Bihar Ltd. Khizri, Ranchi	125	0.50	March 2006	12	75	0	75
Total						3768297.75	281536.24	4049833.99

Appendix - 4.1

(Reference to paragraph: 4.5.1; page 120)

Excess payment of pension due to application of incorrect rate

Sl. No	Paying Branch	Name of Pensioner Shri/Smt	PPO No.	Period of Excess payment	Amount (In rupees)
1	Allahabad Bank, Hazaribagh	Bhanu Pd. Agrawal	HZBFMW 1611	2/04 to 12/06	7,006
2	- do -	Deobala Devi	137734	7.1.01 to 12/06	56,675
3	- do -	Surendra Pd. Singh	256376	10/94 to 12/06	68,112
4	- do -	Ganouri Ram	227054	8/94 to 12/06	31,251
5	- do -	Kailash Bihari	206571	9/90 to 12/06	51,303
6	Central Bank of India, Hazaribagh	Asha Devi	237070	4/97 to 1/07	55,466
7	- do -	Kailash Pd. Verma	212942	- do -	3,358
8	- do -	Umesh Chandra	201473	-do-	40,500
9	- do -	Md. Ekramuddin Khan	227214	-do-	34,678
10	- do -	Badri Nath Tiwary	120897	-do-	50,642
11	Bank of India, Gumla	Sudarshan Surin	322738	5/02 to 12/06	6,552
12	Bank of India, Club Side	Som Chand Lakra	S/74604	6/05 to 10/06	39,782
13	BOI, Church Road	Sanatan Horo	208148	4/2k to 10/06	488
14	BOI, Ormanjhi	Ratnawali Devi	305469	4/04 to 11/06	26,661
15	SBI, Indrapuri	Ram Awtar Lal Rana	357330	2/01 to 9/06	2,113
16	SBI, RIMS	Satrugan Prasad	248015	3/03 to 9/06	2,320
17	SBI, Sector II	Meena Ambastha	61457	4/04 to 5/04	2,540
18	SBI, H.H. Colony	Kanti Devi	RNC ROD 193	9/05 to 9/06	52,111
19	SBI, Namkum	Mangra Oraon	RNC FMW 06981	6/04 to 9/06	30,048
20	BOI, Ratu Road	R.C.N.Tiwari	187970	6/01 to 8/06	2,250
21	SBI, Doranda	Dil Bahadur Sarki	78204	2/02 to 8/06	2,448
22	SBI, Torpa	N. Guria	RNC EDN 10449	8/03 to 9/06	1,204
23	- do -	Nirdosh Tirkey	RNC WSB 060	10/05 to 9/06	4,437
24	SBI, Dipatoli	Budhawa Oraon	340291	09/04 to 03/07	3,789
25	BOI, Ghagra	Bandhan Oraon	GMLEDN 4447	12/05 to 8/07	8766
26	SBI, Sisai	Sarita Devi	GMLEDN 1685	10.10.04 to 8/07	674
27	-do-	Fulmani Devi	S/90687	10.7.06 to 8/07	7447
28	SBI, Sakchi	Maya Mukherjee	211271	4/97 to 7/07	18981
29	Allahabad Bank, Hazaribagh	Urmila Devi	300165	2/06 to 7/07	37982
30	-do-	Rulpal Ram	HZB FMW 1416	8/04 to 7/07	33337
31	PNB, Hazaribagh	Daya Nand Pd. Gupta	014025	4/04 to 6/07	45988
Total					7,28,909

Appendix - 4.2
(Reference to paragraph: 4.5.1; page 120)
Short payment of Pension due to application of incorrect rate

Sl. No.	Paying Branch	Name of Pensioner Shri/Smt	PPO No.	Period of Short payment	Amount (In rupees)
1	Allahabad Bank, Hazaribagh	Uma Shashi	152529	6.4.06 to 11/06	21,519
2	-do-	Sunil Kr. Goswamy	306380	11/98 to 12/06	31,969
3	-do-	Sushila Prasad	9562	4/97 to 12/06	26,454
4	-do-	Gaytri Devi Sinha	019322	12/02 to 12/06	3,018
5	CBI Hazaribagh	K.N. Singh	361978	1/04 to 1/07	87,889
6	SBI, AGO Complex, Ranchi	Gangotri Devi	227379	26.1.06 to 9/06	11,075
7	-do-	Geeta Devi	S/68501	18.6.97 to 9/06	15,314
8	BOI, Khunti	Mariam Hans	012091	29.11.03 to 10/06	8,663
9	BOI, Main Road Ranchi	Alice Kujur	011252	3/02 to 10/06	528
10	SBI, Indrapuri, Ranchi	Usha Rani Devi	263770	16.2.2k to 17.12.03	613
11	-do-	Usha Devi	-	9/2k to 9/06	13,710
12	-do-	Sushma Sinha	319459	10.11.03 to 3/04	4,556
13	-do-	Kamta Prasad Sinha	-	6/03 to 9/04	11,413
14	SBI, CMPDI, Ranchi	Ram Kunwer Ram	306253	4/03 to 9/06	3,654
15	SBI, Namkum, Ranchi	Urseela Devi	RNCPHD 206[s]	7/04 to 9/06	27,998
16	-do-	Johani Lakra	332399[v]	6/02 to 9/06	51,877
17	SBI, Murhu, Ranchi	Sukra Munda	5043	7/06 to 5/06	2,170
18	SBI, Doranda, Ranchi	Radha Raman Singh	015001	1/04 to 8/06	6088
19	-do-	Shanti Devi	S/85979	9.3.06 to 8/06	1,172
20	SBI, Torpa, Ranchi	Silvia Guria	S/85845	9.8.05 to 9/06	4954
21	BOI, Ghagra Ranchi	Charwa Pahan	GMLFMW 1290	11/05 to 8/07	23042
22	-do-	Buchna Mahli	GMLIAR 480	5/05 to 8/07	15280
23	SBI Sisai, Gumla	Makbul Khan	143316	2/04 to 8/07	3200
24	Allahabad Bank, Hazari.bagh	Shushila Devi	399301	1/07 to 7/07	22652
25	-do-	Sukro Munda	HZBFDR 439	26.2.06 to 7/07	24947
26	BOI, Hazaribagh	Kalawati Devi	315554	17.1.06 to 6/07	5840
27	-do-	Most Nepur	20202	3.2.2k to 6/07	19851
28	-do-	Mahabir Kumar	HZBPHD 328	1.7.07 to 6/07	13740
Total					4,63,186

Appendix - 4.3

(Reference to paragraph: 4.5.1;page 120)

Excess payment of pension due to non-deduction/short deduction of commuted portion of pension

Sl. No	Paying Branch	Name of Pensioner	PPO Number	Period of excess payment	Amount (in Rs)
1	SBI, Doranda	Budhi Bahadur Tamang	276599	11/00 to 8/06	18,970
2	- do -	Gaya Prasad	RANPOY 773	11/04 to 8/06	26,444
3	SBI, Khunti	Mahavir Singh	322270	5/01 to 8/06	45,120
4	SBI, Muri	Gangadhar Mahto	011553	11/04 to 8/06	17,836
5	SBI, Tupudana	Smt. S. Barla	011392	11/02 to 2/06	46,600
6	- do -	Ram Bahadur Singh	327413	9/01 to 2/06	72,677
7	SBI, Main Br., Ranchi	Ram Swaroop Ram	170396	8/05 to 2/06	4,459
8	- do -	Dr. A.K.Narain		11/05 to 2/06	3,700
9	- do -	Shyam Sundar Prasad	178953	7/03 to 2/06	11,200
10	- do -	Sheo Kumar Pandey	168030	1/04 to 2/06	8,138
11	- do -	Rajendra Pd. Singh	259775	11/04 to 2/06	19,536
12	- do -	Gopal Krishna	289416	7/01 to 2/06	46,648
13	- do -	A.S.Charan	009213(P)	2/04 to 1/06	73,104
14	- do -	Gorakh Nath Singh	361308	12/03 to 1/06	45,708
15	- do -	Sahdeo Singh	282192	9/01 to 1/06	67,363
16	- do -	K.D.Singh	281548	6/01 to 1/06	29,456
17	- do -	S.C. Patel	353363	2/03 to 1/06	53,280
18	SBI, Hatia	N.S.Mukhopadhyay	017372	9/05 to 12/05	3,778
19	BOI, Ratu	D.R.Mishra	180607	11/02 to 8/06	18,170
20	Allahabad Bank, H. Bagh	Parmanand Pandey	1120139	1/04 to 11/06	34,475
21	-do-	Saroj Prasad	342745	8/04 to 11/06	50,204
22	-do-	Kamakhya N. Singh	253110	12/98 to 11/06	36,576
23	-do-	Ram Deo Singh	348050	6/02 to 11/06	64,152
24	-do-	Khirodhar Ram	327968	-do-	75,060
25	-do-	Shyam Deo Sharma	323976	1/02 to 11/06	24,131
26	-do-	Sunil Kumar Goshwamy	306380	10/01to 12/06	81,900
27	CBI, Hazaribagh	U.N.Chaudhary	343817	1/02 to 1/07	67,222
28	-do-	Shayam Kr. Sahay	173775	1/05 to 1/07	8,900
29	-do-	K.N.Singh	361978	3/05 to 1/07	38,288
30	UBI, Hazaribagh	Ram Lakhn Chaudhary	289456	6/01 to 1/07	65,600
31	UCO Bank Gumla	Vimal Prasad	248385	7/99 to 12/99	3,910
32	-do-	Jagdish Kr. Sinha	322157	11/01	1,014
33	Bank of India Gumla	Jiwan Minz	333642	1/02 to 12/06	12,912
34	-do-	Ram Das Bhagat	018781	3/03 to 12/06	72,496
35	-do-	Shrinath Sahu	241337	1/97 to 5/98	6,400
36	-do-	Ram Babu Gupta	300340	11/99 to 6/01	20,086
37	-do-	Nand Kishore Singh	320056	6/00 to 9/00	6,219
38	-do-	Ram Singh	292558	7/99 to 3/01	34,088
39	-do-	Parmeshwar Pd. Yadav	280784	1/00 to 8/00	7,570
40	-do-	Miran Prasad	292241	4/99 to 6/04	21,700
41	SBI,AGO Complex	Chhathu Ram	335811	6/02 to 9/06	39,572
42	-do-	Madan Prasad	184546	8/92 to 9/06	50,320
43	-do-	Habil Tigga	20338	10/04 to 9/06	6,693
44	-do-	Shanti Shrivastva	RNC ED-17	5/03 to 9/06	1,025
45	BOI, Pandra	Ram Vishnu Ram	321743	6/02 to 7/02	1,700
46	-do-	Ram Naresh Roi	302530	7/00 to 4/02	40,251
47	BOI, Khunti	Kashi Nath Sahu	010267	6/03 to 10/06	54,571
48	BOI, Church Rd.	Sanatan Horo	208148	3/02 to 10/06	18,200
49	BOI, Ormanjhi	Jamaluddin Ansari	253354	2/97 to 11/06	45,194
50	-do-	Baidya Nath Pd.	1873110	7/03 to 11/06	13,640
51	SBI, Pandra	Nirode Bavan Sarkar	225341	1/96 to 9/06	44,947
52	-do-	H.A. Ansari	RNC EDN 4185	5/04 to 9/06	44,138
53	-do-	R.K.P. Yadav	369145	11/00 to 9/06	1420

54	-do-	K.S.Rai	015090(P)	8/04 to 9/06	50,129
55	-do-	Hardwar Singh	RNC IRR 524	4/05 to 9/06	23,847
56	-do-	S.J. Hussain	RNC EDN 6970	3/06 to 9/06	11,826
57	SBI,Bistupur, Jamshedpur	Vir Vinod Sinha	307415	7/01 to 11/04	17,180
58	-do-	Dr. Vijaya Pratap Singh	271911	10/99 to 5/01	32,800
59	-do-	Sukhdeo Pd. Singh	293143	10/99 to 11/00	13,425
60	-do-	Rai Mahendra Pd.	248445	7/98 to 4/00	50,208
61	-do-	Madhusudan Kabiraj	259899	9/98 to 5/01	39,479
62	-do-	Ishwar Chandra Singh	289394	11/99 to 1/01	27,803
63	-do-	Kamleshwar Pd.	017066	12/02 to 11/03	32,361
64	-do-	Dr. Ajit Singh	369733	7/03 to 1/04	15,904
65	SBI, Indrapuri, Ranchi	Chaturgun Shukla	217723	7/04 to 9/06	15,282
66	-do-	Chandra Deep Nr. Sinha	012157	4/02 to 9/06	65,647
67	SBI, Indrapuri, Ranchi	Braj Nath Pandey	170245	7/04 to 9/06	17,864
68	SBI, Indrapuri, Ranchi	Pritam Mashih Tuti	RNC ACH 005	6/03 to 9/06	55,575
69	-do-	Aghori Pandey	235442	9/96 to 9/06	70,310
70	-do-	Kamta Pd. Sinha	-	5/04 to 9/06	1,914
71	-do-	Narayan Pd. Chourasia	002447	12/02 to 9/06	95,060
72	SBI, RIMS	D.N.Ram	009174(P)	1/03 to 11/03	23,434
73	-do-	Girija Prasad	322239	5/05 to 9/06	28,747
74	-do-	Sureshwar Pandey	216987	4/03 to 9/06	59,608
75	-do-	Beni Mishra	297225	4/01 to 9/06	16,500
76	SBI, Sector II	Radhika Devi	001740	9/03 to 9/06	51,768
77	-do-	Sushila Shrivastava	001712	11/02 to 9/06	48,484
78	SBI, CMPDI	Devendra Narayan Singh	307123	7/01 to 9/06	43,500
79	-do-	Bansidhar Kalindu	231856	3/97 to 9/06	52,555
80	-do-	Md. Salahuddin Khan	RNC EDN 5442	10/04 to 9/06	37,008
81	SBI, Namkum	Sita Prasad Singh	315771	9/2k to 9/06	66,722
82	SBI, Ashok Nagar	Krishna Murari	226817	8/2k to 9/06	61,568
83	SBI, Murhu	Sukra Munda	5043	1/05 to 6/06	22,658
84	SBI, Torpa	Rajendra Pd.	001887	7/03 to 9/06	58,890
85	-do-	Rama Nand Nag	272276	1/2k to 8/06	33,360
86	SBI, Gumla	Hari Pahan	011371	7/02 to 11/06	87,581
87	SBI, Gumla	Bandhan Ram	008210	10/02 to 4/05	22,465
88	-do-	Yogendra Pd.	322490	1/03 to 2/04	15,317
89	-do-	Md. Kasimuddin	313711	7/01 to 10/01	4,728
90	-do-	Phulchand Ohdar	206509	5/95 to 8/95	1,146
91	-do-	Radheshwar Singh	282852	9/03 to 11/03	1,894
92	-do-	Ram Kishun Sahu	277126	4/98 to 6/98	589
93	Allahabad Bank, M.Rd Ranchi	Md. Talib Hussain	193619	5.4.93 to 6/93	1187
94	SBI, Upper Bazar, Ranchi	Kishun Sahu	RNC EDN 3312	4/04 to 3/07	54,792
95	BOI.Ghagra, Gumla	Smt.Birasi Kumari	GML FMW1017	12/04 to 8/07	33990
96	-do-	Sri.Rajeshwar Pd.Singh	315783	1/01 to 8/07	1,11,200
97	UCO Bank Sisai,Gumla	Balgovind Kr. Yadav	GMLFMW006	9/05 to 8/07	38400
98	- do-	Hussai Oraon	296251	3/02 to 8/07	13200
99	SBI, Sisai, Gumla	Matias Bara	GMLEDN4706	3/06 to 8/07	44820
100	-do-	Matias Kerketta	GMLEDN 4548	3/06 to 8/07	42552
101	-do-	John Ekka	GMLEDN 2190	6/04 to 8/07	30108
102	SBI, Sakchi	Laxmi Kant Jha	2010571	1/97 to 7/07	71501
103	-do-	Binod Chandra Mohanty	267154	8/99 to 7/07	34752
104	-do-	K.K.Singh	369376	2/03 to 07/03	13128
105	-do-	Late Kashi Naresh Dubey	000217	2/02 to 1/03	6396
106	BOB, Jamshedpur	Basuridin Hydar	195339	6/00 to 8/07	59856
107	UCO Bank, Jamshedpur	K.N. Pandey	169167	2/03 to 6/07	29460
108	-do-	Rajmani Sinha	292236	6/00 to 7/07	125474
109	Allahabad Bank, H.Bag	Bharat Prasad	263911	4/02 to 7/07	61760
110	BOI, H.Bag	Kamla Pd. Yadav	258878	7/05 to 6/07	14304
111	-do-	Ram Pyari Devi	272517	5/98 to 6/07	47520
	Total				39,16,297

Appendix – 4.4
(Reference to paragraph: 4.6.1; page 126)
Follow up action on earlier audit reports

Year	Total no. of paras	No. of Department
2000-01	13	9
2001-02	11	8
2002-03	22	14
2003-04	22	15
2004-05	22	13
2005-06	27	15
Total	117	29

Appendix - 4.5
(Reference to paragraph: 4.6.4; page 128)
Outstanding IRs and Paras of Works, RVP and OAD wing as on 30.06.2007

Year	Works			RVP			OAD		
	IR	Para		IR	Para		IR	Para	
		Sec-A	Sec-B		Sec-A	Sec-B		Sec-A	Sec-B
1984-85	3	1	3	-	-	-	-	-	-
1986-87	2	3	1	4	1	5	-	-	-
1987-88	1	0	1	24	25	38	-	-	-
1988-89	7	2	10	20	25	31	-	-	-
1989-90	6	2	8	29	41	9	-	-	-
1990-91	13	5	11	22	34	22	-	-	-
1991-92	10	1	9	41	91	62	-	-	-
1992-93	5	1	5	24	27	8	-	-	-
1993-94	21	12	15	37	70	5	-	-	-
1994-95	19	12	14	22	15	37	-	-	-
1995-96	28	10	38	28	26	74	-	-	-
1996-97	35	43	29	26	45	81	-	-	-
1997-98	15	35	21	31	29	81	1	4	2
1998-99	24	9	25	19	29	70	0	0	0
1999-00	30	23	29	12	18	51	1	4	1
2000-01	83	76	426	18	31	63	288	291	1709
2001-02	114	82	568	53	37	211	368	260	1982
2002-03	155	188	730	33	23	71	375	246	1808
2003-04	136	175	701	41	51	236	550	417	2514
2004-05	125	212	682	33	37	156	401	406	1949
2005-06	137	211	715	47	46	329	423	447	2344
2006-07	174	253	1022	44	54	218	146	268	641
2007-08	14	22	72	1	0	8	-	-	-
Total	1157	1378	5135	609	755	1866	2553	2343	12950

Appendix - 5.1
(Reference to paragraph: 5.1.8; page 141)
Statement showing sanctioned strength and men in position

Sl No.	Name of Local Bodies	Sanctioned strength	Men-in-position	Shortage of staff (-)	
				No.	Percentage
1	Medininagar	197	93	104	52.80
2	Jugsalai	143	69	74	51.75
3	Chaibasa	137	72	65	47.45
4	Ranchi	1330	827	503	37.82
5	Hazaribagh	292	258	34	11.65
6	Adityapur (NAC)	48	28	20	41.67
7	Dhanbad (Nagar Nigam)	432	203	229	53.00
8	Godda	39	27	12	30.77
9	Chatra	90	39	51	56.67
10	Ranchi (RRDA)	138	71	67	48.55

Appendix – 6.1

(Reference to paragraphs: 6.1.3 and 6.1.5; page 144 and 145)

**Statement showing particulars of up-to-date paid up capital, budgetary outgo, loans given out of budget and loans outstanding as on 31 March 2007
in respect of Government companies and Statutory Corporation.
(Figures in column 3 (a) to 4 (f) are Rupees in lakh)**

Sl. No.	Sector and name of the Company	Paid up capital as at the end of current year					Equity/loans received out of Budget during the year		Other loans received during the year	Loans outstanding [#] at the close of 2006-2007			Debt equity ratio for 2006-07 (previous year) 4(f)/3(e)
		State Govt.	Central Govt.	Holding Companies	Others	Total	Equity	Loans		Govt.	Others	Total	
1	2	3(a)	3(b)	3(c)	3(d)	3(e)	4(a)	4(b)	4(c)	4(d)	4(e)	4(f)	5
A.	Government companies												
	Agriculture												
1.	Jharkhand Hill Area Lift Irrigation Corporation Ltd.	500.00	-	-	-	500.00	-	-	-	525.00	-	525.00	1.05:1 (1.05:1)
	Construction												
2.	Jharkhand Police Housing Corporation Ltd.	200.00	-	-	-	200.00	-	-	-	-	-	-	-
	Tourism												
3.	Jharkhand Tourism Development Corporation Ltd.	75.00	-	-	-	75.00	-	-	-	-	-	-	-
	Forest & Environment												
4.	Jharkhand State Forest Development Corporation Ltd.	5.00	-	-	-	5.00	-	-	-	-	-	-	-
	Mining												
5.	Jharkhand State Mineral Development Corporation Ltd.	200.00	-	-	-	200.00	-	-	-	-	-	-	-
	Industry												
6.	Jharkhand Industrial Infrastructure Development Corporation Ltd.	100.00	-	-	-	100.00	-	-	-	-	-	-	-
	Share Application Money	(200.00)	-	-	-	200.00	200.00	-	-	-	-	-	-

Sl. No.	Sector and name of the Company	Paid up capital as at the end of current year					Equity/loans received out of Budget during the year		Other loans received during the year	Loans outstanding [#] at the close of 2006-2007			Debt equity ratio for 2006-07 (previous year) 4(f)/3(e)
		State Govt.	Central Govt.	Holding Companies	Others	Total	Equity	Loans		Govt.	Others	Total	
1	2	3(a)	3(b)	3(c)	3(d)	3(e)	4(a)	4(b)	4(c)	4(d)	4(e)	4(f)	5
Social services													
7.	Greater Ranchi Development Agency Limited Share Application Money	(50.00)				50.00	50.00						
	Total (A) Share Application Money	1080.00 (250.00)	-	-	-	1080.00 (250.00)	250.00	-	-	525.00	-	525.00	-
B	Statutory corporation												
	Power												
1.	Jharkhand State Electricity Board	-	-	-	-	-	-	5200.00	-	246686.00*	6554.00	253240.00	-
	Total (B)	-	-	-	-	-	-	5200.00		246686.00	6554.00	253240.00	-
	Grand Total (A+B) Share Application Money	1080.00 (250.00)	-	-	-	1080.00 (250.00)	250.00	5200.00	-	247211.00	6554.00	253765.00	-

Source: Data furnished by Government companies/Statutory corporation/Autonomous Body

Note:- Figures are provisional and as given by the Companies and Corporations.

Loans outstanding at the close of 2006-07 represent long term loans only.

* It includes a loan of Rs 135625.00 lakh received from Central Government.

Appendix – 6.2

(Reference to paragraphs: 6.1.6 and 6.1.7; page 146)

Summarised financial results of Government companies and Statutory corporation for the latest year for which accounts were finalised

(Figures in columns 7 to 12 and 15 are Rupees in lakh)

Sl. No.	Sector and name of Company	Name of department	Date of incorporation	Period of Accounts	Year in which A/cs finalised	Net profit (+)/ loss (-)	Net impact of audit comment	Paid up capital	Accumulated profit (+)/loss(-)	Capital employed (A)	Total Return on Capital Employed	Percent-age of total return on capital employed	Arrears of accounts in terms of years	Turn-over	Man-power
1	2	3	4	5	6	7	8	9	10	11	12	13	14	15	16
A	Government companies														
	Agriculture														
1.	Jharkhand Hill Area Lift Irrigation Corporation Ltd.	Water Resources	22.3.2002	2004-05	2007-08	(-) 48.00	Understatement of loss by Rs 370.00 lakh	500	22.00	1,006.00	(-) 48.01	-	2	70.34	281
	Construction														
2.	Jharkhand Police Housing Corporation Ltd.	Home	13.3.2002	2005-06	2006-07	96.72	Overstatement of profit by Rs63.00 lakh	200	494.76	694.77	494.76	71.21	1	309.40	75
	Tourism														
3.	Jharkhand Tourism Development Corporation Ltd.	Tourism	22.3.2002	2002-03	2006-07	19.92	-	75	-	9.29	-	-	4	17.27	77
	Forest and Environment														
4.	Jharkhand State Forest Development Corporation Ltd.	Forest & Environment	27.3.2002	2004-05	2006-07	(-) 9.63	Understatement of loss by Rs79.72 lakh	5	138.29	142.72	138.29	96.90	2	2,679.69	464
	Mining														
5.	Jharkhand State Mineral Development Corporation Ltd.	Mines & Geology	7.5.2002	2002-03	2007-08	-	Understatement of expenses by Rs 0.88 lakh	200	-	208.77	-	-	4	-	568

Sl. No.	Sector and name of Company	Name of department	Date of incorporation	Period of Accounts	Year in which A/cs finalised	Net profit (+)/ loss (-)	Net impact of audit comment	Paid up capital	Accumulated profit (+)/loss(-)	Capital employed (A)	Total Return on Capital Employed	Percent-age of total return on capital employed	Arrears of accounts in terms of years	Turn-over	Man-power
1	2	3	4	5	6	7	8	9	10	11	12	13	14	15	16
	Industry														
6	Jharkhand Industrial Infrastructure Development Corporation Ltd.	Industry	15.12.2004	-	-	-	-	300	-	-	-	-	2	-	8
	Social services														
7	Greater Ranchi Development Agency Ltd.	Urban Development	23.1.2003	-	-	-	-	-	-	-	-	-	4	-	1
B	Statutory corporation														
	Power														
1.	Jharkhand State Electricity Board	Energy	20.3.2001	2001-02	2005-06	(-) 4,944.78	-	-	(-) 4,944.78	4,38,081.45	23,599.10	5.39	5	-	6953
C	Autonomous Body														
	Power														
1.	Jharkhand State Electricity Regulatory Commission	-	24.4.2003	-	-	-	-	-	-	-	-	-	4	-	41

Source: Annual accounts files of the respective Government companies

Note : 1. Capital employed represents net fixed assets (including Capital work in progress) plus working capital (i.e. Current Assets, Loans & Advances less Current Liabilities excluding provision for pension and gratuity).

2. Total return on Capital Employed represents Net Surplus / deficit plus interest charged in Profit & Loss Accounts (less interest capitalised)

Appendix – 6.3
(Reference to paragraph: 6.1.5; page 145)
Statement showing Budgetary outgo year wise towards capital, loan, grants and subsidies

(Rupees in lakh)

Sl. No.	Name	2005-06		2006-07	
		Equity	Loan (L) Grants (G)	Equity	Loan (L)/ Other Grants (G) / Subsidy
A. Government companies					
1	Jharkhand Hill Area Lift Irrigation Corporation Ltd.	-	-	-	-
2	Jharkhand Police Housing Corporation Ltd.	-	-	-	-
3	Jharkhand Tourism Development Corporation Ltd.	25.00 (Share Application)	-	-	-
4	Jharkhand State Forest Development Corporation Ltd.	-	-	-	-
5	Jharkhand State Mineral Development Corporation Ltd.	200.00*	-	-	-
6	Jharkhand Industrial Infrastructure Development Corporation Ltd.	100.00 *	-	200.00 (Share Application)	-
7	Greater Ranchi Development Agency Ltd.	-	-	50.00 (Share Application)	-
Sub Total		325.00	-	250.00	-
B Statutory corporation					
1	Jharkhand State Electricity Board	-	32126.00 (L)	-	5200.00 (L)
C Autonomous Body					
1	Jharkhand State Electricity Regulatory Commission	-	110.00 (G)	-	120.00 (G)
Total		325.00	32236.00	250.00	5320.00

Source: Data furnished by Government companies/Statutory corporation/ Autonomous Body

Note: The figures are provisional and as given by the Companies, Corporation and the Autonomous Body.

* Figures relating to 2005 -2006 are included now.

Appendix – 6.4
(Reference to paragraph: 6.1.9; page 146)

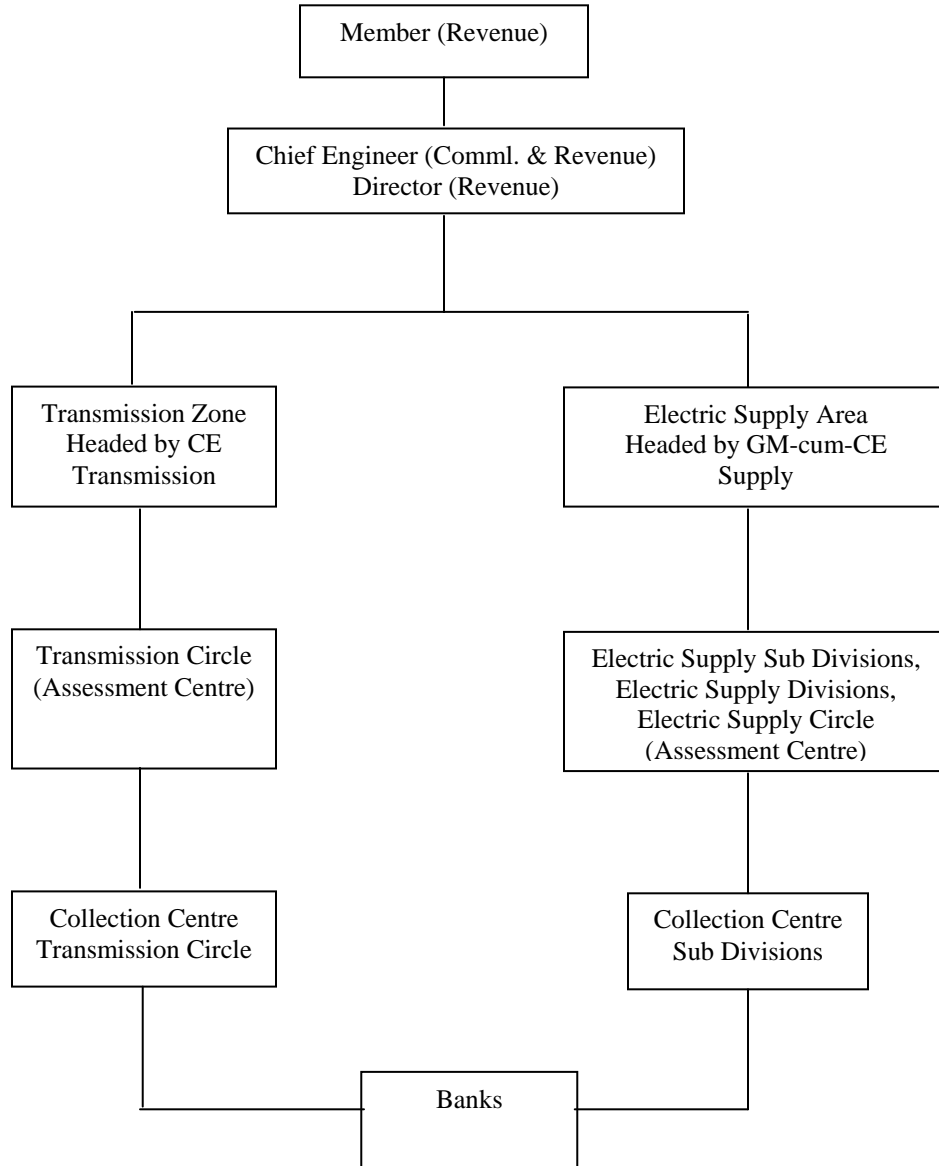
Statement showing outstanding paras of Inspection Reports

Sl.No.	Year	No. of IR	No. of Part II 'A' paras
1.	1991-92	2	2
2.	1992-93	12	19
3.	1993-94	12	17
4.	1994-95	27	30
5.	1995-96	18	18
6.	1996-97	30	31
7.	1997-98	37	62
8.	1998-99	31	32
9.	1999-00	14	17
10.	2000-01	30	36
11.	2001-02	41	48
12.	2002-03	32	35
13.	2003-04	30	82
14.	2004-05	31	104
15.	2005-06	38	93
16.	2006-07	32	56
Total		417	682

Source: Register of Outstanding para

Appendix – 6.5
(Reference to paragraph: 6.2.1; page 148)

Organisational Chart



Source: Jharkhand State Electricity Board

Appendix – 6.6
(Reference to paragraph: 6.2.17; page 155)

Loss of revenue due to non installation of meters

Sl. No.	Service Connection No. and Name of the consumer	Average consumption of energy and demand per month						Loss of revenue (Rupees in lakh)
		To be billed based on new meter		Already billed		Short billed		
		Units	KVA	Units	KVA	Units	KVA	
1.	NR 490 ESI Hospital	48,075	112	19,710	75	28,365	37	49.84
2.	NR 491 ECL, Kumardhubi Colliery	53,153	118	20,748	100	32,405	18	80.72
3.	NR 492 ECL, Khudia Colliery	1,47,336	500	1,04,052	500	43,284	Nil	105.88
4.	NR 505 ECL, Laikidih Colliery	1,16,596	252	26,052	167	90,544	85	228.36
Total								464.80

Source: Data furnished by the circle

Appendix – 6.7
(Reference to paragraph: 6.2.23; page 158)

Compensation charges recoverable due to excess transformer capacity

Sl. No.	Name of the consumer	Contract demand (in MVA)	Transformer capacity (in MVA)	2/3 rd of Transformer capacity (in MVA)
1.	S.E. Railway, Chakradharpur, Manikui Point	13.5	25	17
2.	S.E. Railway, Chakradharpur, Goilkeria Point	11.0	25	17
3.	S.E. Railway, Chakradharpur, Kendposi Point	9.1	20	13
4.	S.E. Railway, Chakradharpur, Rajkharsawan Point	8.0	13.5	9
Total		41.6	83.5	56

2/3 rd of total transformer capacity	=	56 MVA
Compensation charges to be billed	=	56 MVA x Rs 1,40,000 per MVA x 2 times x 6 months
	=	Rs 9.41 crore
Less: actual demand billed	=	Rs 4.94 crore
Compensation charges recoverable	=	Rs 4.47 crore

Source: Data furnished by the circle

Appendix – 6.8
(Reference to paragraph: 6.2.25; page 159)

Loss of interest due to allowance of excess period for payment of bills

(Rupees in lakh)

Sl. No.	Name of the circle	Name of the consumer	Total bill amount	Loss of interest
1	Transmission circle, Jamshedpur	Uranium Corporation of India Ltd.	3,483.00	11.16
2	-do-	Hindustan Copper Ltd.	1,958.00	6.28
3	-do-	Uranium Corporation of India Ltd.	940.00	3.01
4	-do-	RTS Dhalbhumgarh	2,570.00	4.83
5	-do-	RTS Manikui	3,257.00	8.50
6	-do-	RTS Salgajhari	2,277.00	6.06
7	-do-	RTS Rajkharsawan	1,662.00	4.32
8	-do-	RTS Goilkeria	2,369.00	6.15
9	-do-	RTS Kendposi	2,057.00	5.33
10	-do-	RTS Rajkharsawan	1,262.00	3.30
11	Transmission circle, Ranchi	RTS Tolra	3,428.00	5.08
12	-do-	RTS Lodhma	294.00	0.18
13	-do-	RTS Bakaspur	678.00	0.47
14	-do-	RTS Tatisilwai	860.00	0.64
15	-do-	Heavy Engineering Corporation Ltd.	2,920.00	9.21
Total			30,015.00	74.52

Source: Consumer ledgers of the circles

Appendix – 6.9
(Reference to paragraph: 6.2.32; page 163)

Time barred dues during the period April 2004 to March 2007

Sl.No.	Name of Electric Supply Circle	No. of consumers	Amount (Rs. in crore)
1.	Dhanbad	10,574	24.31
2.	Hazaribagh	8,506	13.26
3.	Jamshedpur	8,485	18.97
4.	Ranchi	19,176	39.45
Total		46,741	95.99

Source: Consumer ledgers of the circles

Appendix – 6.10
(Reference to paragraph: 6.3.1; page 169)

Loss of revenue due to wrong computation of reserve price

Sl. No.	Name of the lot	RESERVE PRICE		Actual Sale Price	Loss of Revenue Col. (3) – Col. (5)
		To be fixed based on average sale price	Actually fixed by the Company		
<i>(Rupees in lakh)</i>					
(1)	(2)	(3)	(4)	(5)	(6)
Daltonganj Division					
1	Manatu D	16.06	10.71	10.00	6.06
2	Manatu E	10.56	7.04	7.57	2.99
3	Latehar C	2.61	0.87	0.75	1.86
Garhwa Division					
1	Garhwa (P) A	4.37	1.46	2.01	2.36
2	Chainpur B	15.32	5.11	5.78	9.54
3	Bhandaria D	11.31	7.54	6.26	5.05
4	Nagar D	10.22	6.82	5.16	5.06
Hazaribagh Division					
1	Tandwa B8	2.07	0.69	1.00	1.07
2	Pratappur C	6.69	4.46	4.16	2.53
3	Rajpur A	6.17	2.06	2.17	4.00
Giridih Division					
1	Gawan (P) B	6.95	4.64	3.51	3.44
					43.96

Source: Tender files of the company

Appendix – 6.11
(Reference to paragraph: 6.3.3.1; page 171)

Excess price variation allowed – AAA Weasel Conductor

Sl. No.	Purchase Order No. & Date	Name of the supplier	Quantity ordered (in Km.)	Quantity received (in Km.)	Price variation allowed (Rs. in lakh)	Excess Price variation allowed (Rs. in lakh)
1.	52/27.12.04	Venkateswara Wires	2,250	2,250	14.77	7.36
2.	53/27.12.04	Bharat Electrical	1,000	995	7.03	3.22
3.	54/27.12.04	Gupta Cables	2,000	1,993	14.08	6.46
4.	55/27.12.04	Shree Shyamji	600	598	3.83	1.88
5.	56/27.12.04	Rohit Conductors	600	599	3.90	1.89
6.	57/27.12.04	Agarwal Cables	1,050	1,048	7.22	3.49
7.	58/27.12.04	Tirupati Conductors	2,000	1976	13.94	6.40
8.	62/27.12.04	Hi Tek Power con	500	500	3.59	1.60
9.	65/18.01.05	Singhi Cables	1,000	1,000	7.27	3.34
10.	04/06.05.05	Venkateswara Wires	1,000	1,000	8.93	3.27
11.	12/22.06.05	Hi Tek Power con	650	650	3.08	2.08
12.	13/22.06.05	Lumino Industries	2,500	2,500	19.42	8.34
13.	17/24.06.05	Agarwal Cables	400	400	1.98	1.33
14.	18/24.06.05	Rohit Conductors	250	250	1.17	0.79
15.	20/02.07.05	Shashi Cables	200	199	0.98	0.66
16.	21/08.07.05	Venkateswara wires	1,000	1,000	4.85	3.27
Total			17,000	16,958	116.04	55.38

Source: Purchase order files of the Board

Appendix – 6.12
(Reference to paragraph: 6.3.3.2; page 172)

Excess price variation allowed – ACSR Conductor

Sl. No.	Purchase Order No. & Date	Name of the supplier	Quantity ordered (in Km.)	Quantity received (in Km.)	Price variation allowed (Rs. in lakh)	Excess Price variation allowed (Rs. in lakh)
1	10/03.11.04	Shiva Prints	252	251	4.54	2.11
2	67/20.01.05	-do-	70	70	1.82	0.62
3	01/01.04.05	-do-	100	100	3.23	0.89
4	38/05.10.05	-do-	200	200	8.20	1.68
Total			622	621	17.79	5.30

Source: Purchase order files of the Board