

ANNEXURE - 1

(Referred to in Paragraph Nos. 1.3, 1.5 & 1.16)

**Statement showing particulars of up-to-date paid-up capital, budgetary outgo, loans given out of budget and loans outstanding as on 31 March 2004 in respect of Government companies and Statutory corporations
(Figures in brackets indicate share application money pending allotment)**

(Figures in columns 3(a) to 4(g) are rupees in lakh)

Sl. No	Sector and name of the company	Paid up capital at the end of the current year					Equity /loans received out of budget during the year		Others loans received during the year	Loans outstanding at the close of 2003-04				Debt equity ratio for 2003-04 (Previous year)
		State Govt.	Central Govt.	Holding Companies	Others	Total	Equity	Loans		State Govt.	Central Govt.	Others	Total	
1	2	3(a)	3(b)	3(c)	3(d)	3(e)	4(a)	4(b)	4(c)	4(d)	4(e)	4(f)	4(g)	5
A	Working Government Companies													
	Agriculture and Allied													
1.	Bihar Rajya Beej Nigam Ltd.	162.46 (65.20)		---	138.94 (4.19)	301.40 (69.39)	--	--	--	2,792.55	--	--	2,792.55	7.52:1 (7.55:1)
2.	Bihar Rajya Matasya Vikas Nigam Ltd.	174.75 (125.25)	---	---	---	174.75 (125.25)	--	--	--	213.84	2.50	--	216.34	0.72:1 (0.41:1)
	Sector-wise total	337.21 (190.45)		---	138.94 (4.19)	476.15 (194.64)	--	--	--	3,006.39	2.50	--	3,009.89	4.48:1 (5.26:1)
	Electronics													
3	Bihar State Electronics Development Corporation Ltd.	407.77 (159.14)	---	---	---	407.77 (159.14)	---	0.10	--	593.48	--	--	593.48	1.05 :1 (1.05:1)
	Sector-wise total	407.77 (159.14)	---	---	---	407.77 (159.14)	--	0.10	--	593.48	--	--	593.48	1.05:1 (1.05:1)
	Forest													
4	Bihar State Forest Development Corporation Limited	175.08	54.00	---	---	229.08	--	--	--	--	--	--	--	--
	Sector wise total	175.08	54.00	---	---	229.08	--	--	--	--	--	--	--	--
	Mining													

Sl. No	Sector and name of the company	Paid up capital at the end of the current year					Equity /loans received out of budget during the year		Others loans received during the year	Loans outstanding at the close of 2003-04				Debt equity ratio for 2003-04 (Previous year)
		State Govt.	Central Govt.	Holding Companies	Others	Total	Equity	Loans		State Govt.	Central Govt.	Others	Total	
1	2	3(a)	3(b)	3(c)	3(d)	3(e)	4(a)	4(b)	4(c)	4(d)	4(e)	4(f)	4(g)	5
5	Bihar State Mineral Development Corporation Ltd.	997.35	---	---	---	997.35	--	--	--	--	--	--	--	--
	Sector wise total	997.35	---	---	---	997.35	--	--	--	--	--	--	--	--
Construction														
6	Bihar Police Building Construction Corporation Ltd.	10.00	---	---	---	10.00	--	--	--	42.90	--	--	42.90	4.29:1 (4.29:1)
7	Bihar Rajya Pul Nirman Nigam Ltd.	350.00	---	---	---	350.00	--	--	--	--	--	--	--	--
	Sector wise total	360.00	---	---	---	360.00	--	--	--	42.90	--	--	42.90	4.29:1 (4.29:1)
Development of Economically Weaker Section														
8	Bihar State Minorities Finance Corporation Ltd.	975.00	---	---	---	975.00	--	--	--	--	--	949.55	949.55	0.97:1 (0.61:1)
9	Bihar State Backward Classes Finance & Development Corporation Ltd.	1,336.00	---	---	---	1,336.00	--	--	--	--	--	1,926.60	1,926.60	1.44:1 (1.49:1)
	Sector wise total	2,311.00	---	---	---	2,311.00	--	--	--	--	--	2,876.15	2,876.15	1.24:1 (1.12:1)
Public Distribution														
10	Bihar State Food & Civil Supplies Corporation Ltd.	526.58	---	---	---	526.58	--	--	--	431.01	160.87	--	591.88	1.12:1 (1.22:1)
	Sector wise total	526.58	---	---	---	526.58	--	--	--	431.01	160.87	--	591.88	1.12:1 (1.22:1)

Sl. No	Sector and name of the company	Paid up capital at the end of the current year					Equity /loans received out of budget during the year		Others loans received during the year	Loans outstanding at the close of 2003-04				Debt equity ratio for 2003-04 (Previous year)
		State Govt.	Central Govt.	Holding Companies	Others	Total	Equity	Loans		State Govt.	Central Govt.	Others	Total	
1	2	3(a)	3(b)	3(c)	3(d)	3(e)	4(a)	4(b)	4(c)	4(d)	4(e)	4(f)	4(g)	5
Tourism														
11	Bihar State Tourism Development Corporation Ltd.	500.00	---	---	---	500.00	--	--	--	--	--	--	--	--
Sector wise total		500.00	---	---	---	500.00	--	--	--	--	--	--	--	--
Power														
12	Bihar State Hydro Electric Power corporation Ltd.	9,904.00	---	---	---	9,904.00	--	2,338.00	--	12,132.00	--	--	12,132.00	1.22:1 (0.99:1)
13	Tenughat Vidyut Nigam Ltd.	10,000.00	---	---	---	10,000.00	--	--	--	60,889.00	--	4,145.00	65,034.00	6.5:1 (6.5:1)
Sector wise total		19,904.00	---	---	---	19,904.00	--	--	--	7,3021.00	--	4,145.00	77,166.00	3.87:1 (3.76:1)
Financing														
14	Bihar State Credit & Investment Corporation Ltd.	1,500.00 (12.35)	---	---	---	1,500.00 (12.35)	--	--	--	2,547.34	--	5,048.38	7,595.72	5.02:1 (4.57:1)
Sector wise total		1,500.00 (12.35)	---	---	---	1,500.00 (12.35)	--	--	--	2,547.34	--	5,048.38	7,595.72	5.02:1 (4.57:1)
Miscellaneous Sector														
15	Bihar State Text- Book Publishing Corporation Ltd.	47.67	---	---	---	47.67	--	--	--	--	--	--	--	--
16	Bihar State Film Development and Finance Corporation Ltd.	100.00	---	---	---	100.00	--	--	--	14.50	--	--	14.50	0.14:1 (0.14:1)
Sector wise total		147.67	---	---	---	147.67	--	--	--	14.50	--	--	14.50	0.01:1 (0.39:1)
TOTAL (A)		27,166.67 (361.94)	54.00		138.94 (4.19)	27,359.60 (366.13)	--	2,338.10	--	79,656.62	163.37	12,069.53	91,889.52	3.3:1 (3.19:1)
B	Working Statutory Corporations													

Sl. No	Sector and name of the company	Paid up capital at the end of the current year					Equity /loans received out of budget during the year		Others loans received during the year	Loans outstanding at the close of 2003-04				Debt equity ratio for 2003-04 (Previous year) 4(g)/3(e)
		State Govt.	Central Govt.	Holding Companies	Others	Total	Equity	Loans		State Govt.	Central Govt.	Others	Total	
1	2	3(a)	3(b)	3(c)	3(d)	3(e)	4(a)	4(b)	4(c)	4(d)	4(e)	4(f)	4(g)	5
Power														
1.	Bihar State Electricity Board	---	---	---	---	--	--	67,160.90	--	4,42,858.45	--	2,986.03	4,66,844.48	--
Sector wise total		---	---	---	---	--	--	67,160.90	--	4,42,858.45	--	2,986.03	4,66,844.48	--
Transport														
2.	Bihar State Road Transport Corporation.	7,475.57	2,651.78	---	---	10,127.35	--	230.00	--	7,940.68	--	--	7,940.68	0.78:1 (0.76:1)
Sector wise total		7,475.57	2,651.78	---	---	10,127.35	--	230.00	--	7,940.68	--	--	7,940.68	0.78:1 (0.76:1)
Financing														
3.	Bihar State Financial Corporation.	3,994.77	---	---	3,789.04	7,783.81	--	2,748.16	--	11,142.00	--	19,924.75	31,066.75	4.1 (3.83:1)
Sector wise total		3,994.77	---	---	3,789.04	7,783.81	--	2,748.16	--	11,142.00	--	19,924.75	31,066.75	4.1 (3.83:1)
Miscellaneous														
4.	Bihar State Warehousing Corporation.	68.55	---	---	68.55	137.10	--	--	--	--	--	--	--	--
Sector wise total		68.55	---	---	68.55	137.10	--	--	--	--	--	--	--	--
TOTAL (B)		11,538.89	2,651.78	---	3,857.59	18,048.26	--	70,139.06	--	4,61,941.13	--	43,910.78	5,05,851.91	28:1 (40:1)
Grand Total (A+B)		38,705.56 (361.94)	2,705.78	---	3,996.33 (4.19)	45,407.67 (366.13)	--	72,477.16	--	5,41,597.75	163.37	55,980.31	5,97,741.43	13.16 (17.72:1)
C Non working companies														
Agriculture and Allied														
1.	Bihar State Water Development Corporation	1,000.00	---	---	---	1,000.00	--	--	---	4,967.89	---	--	4,967.89	4.97:1

Sl. No	Sector and name of the company	Paid up capital at the end of the current year					Equity /loans received out of budget during the year		Others loans received during the year	Loans outstanding at the close of 2003-04				Debt equity ratio for 2003-04 (Previous year)
		State Govt.	Central Govt.	Holding Companies	Others	Total	Equity	Loans		State Govt.	Central Govt.	Others	Total	
1	2	3(a)	3(b)	3(c)	3(d)	3(e)	4(a)	4(b)	4(c)	4(d)	4(e)	4(f)	4(g)	5
	Ltd.													(4.97:1)
2.	Bihar State Dairy Corporation Ltd.	672.36	---	---	---	672.36	--	--	---	175.35	---	--	175.35	0.26:1 (0.26:1)
3.	Bihar Hill Area Lift Irrigation Corporation Ltd.	1,000.00	---	---	---	1,000.00	--	--	---	855.42	---	--	855.42	0.86:1 (0.86:1)
4.	Bihar State Agro Industries Development Corporation Ltd. Ltd.	756.52 (7.00)		---	---	756.52 (7.00)	--	--	---	974.99	---	--	974.99	1.28:1 (1.44:1)
5.	Bihar Fruit & Vegetables Development Corporation Ltd.	161.37	49.00	---	---	210.37	--	--	---	70.00	41.80-	51.88	163.69	0.77:1 (0.53:1)
6.	Bihar Insecticides Ltd.	---	---	57.03 (238.90)	---	57.03 (238.90)	--	--	---	---	---	154.10	154.10	0.52:1 (0.52:1)
	Sector-wise total	3,590.35 (7.00)	49.00	57.03 (238.90)	---	3,696.38 (245.90)	--	--	---	7,043.65	41.80	205.98	7,291.44	1.85:1 (1.87:1)
	Industries (Miscellaneous)													
7.	Bihar State Small Industries Corporation Ltd.	718.48	---	---	---	718.48	--	--	---	1040.00	---	183.00	1,223.00	1.70:1 (1.58:1)
8.	Bihar State Industrial Development Corporation Ltd.	1,404.00	---	---	---	1,404.00	--	--	---	6,702.00	---	217.95	6,919.95	4.93:1 (4.93:1)
9.	Bihar Scooters Ltd.	---	---	163.00	---	163.00	--	--	---	609.34	---	--	609.34	3.74:1 (3.74:1)
10.	Bihar Paper Mills Ltd. [♦]	---	---	776.92	---	776.92	--	--	---	---	---	1,071.61	1,071.61	1.38:1 (1.38:1)

[♦] The company has been ordered to be wound up by the Patna High Court.

Sl. No	Sector and name of the company	Paid up capital at the end of the current year					Equity /loans received out of budget during the year		Others loans received during the year	Loans outstanding at the close of 2003-04				Debt equity ratio for 2003-04 (Previous year)
		State Govt.	Central Govt.	Holding Companies	Others	Total	Equity	Loans		State Govt.	Central Govt.	Others	Total	
1	2	3(a)	3(b)	3(c)	3(d)	3(e)	4(a)	4(b)	4(c)	4(d)	4(e)	4(f)	4(g)	5
11.	Bihar State Finished leathers Corporation Limited	---	---	88.00	59.00	147.00	--	--	---	918.00	---	--	918.00	6.24:1 (6.24:1)
12.	Bihar State glazed Tiles & Ceramics Ltd.	---	---	115.00 (25.00)	---	115.00 (25.00)	--	--	---	---	---	366.33	366.33	2.62:1 (2.62:1)
13.	Vishwamitra Paper Industries Ltd.	---	---	114.57 (59.72)	---	114.57 (59.72)	--	--	---	---	---	81.15	81.15	0.47:1 (0.47:1)
14.	Jhanjharpur Paper Industries Ltd.	---	---	107.35 (41.55)	---	107.35 (41.55)	--	--	---	---	---	46.16	46.16	0.31:1 0.31:1
15.	Bihar State Tannin Extract Ltd.	---	---	107.35	50.00	157.33	--	--	---	---	---	213.84	213.84	1.36:1 (1.36:1)
16.	Bihar Solvent & Chemicals Ltd.	20.00	---	68.15	20.07	108.22	--	--	---	---	---	88.69	88.69	0.82:1 (0.82:1)
17.	Synthetic Resins (Eastern) Ltd.	---	---	21.47	9.52 (78.69)	30.99 (78.69)	--	--	---	---	---	105.08	105.08	0.95:1 (2.67:1)
18.	Magadh Minerals Ltd.	---	---	0.07 (36.22)	---	0.07 (36.22)	--	--	---	---	---	46.58	46.58	1.29:1 (1.29:1)
19.	Bhavani Active Carbon Ltd.	---	---	9.43	---	9.43			---	---	---			---
20	Bihar State Leather Industries Development Corporation Ltd.	1,000.00	---	---	---	1,000.00	--	0.55	---	1,242.55	---	170.00	1,412.55	1.41:1 (1.41:1)
21	Bihar State Construction corporation Ltd.	700.00	---	---	---	700.00	--	--	---	105.10	---		105.10	0.15:1 (0.15:1)
	Sector wise total	3,842.48	-	1,571.31 (162.49)	138.59 (78.69)	5,552.38 (241.18)	--	0.55	---	1,0617.00	---	2,590.39	13207.39	2.27:1 (2.29:1)

Sl. No	Sector and name of the company	Paid up capital at the end of the current year					Equity /loans received out of budget during the year		Others loans received during the year	Loans outstanding at the close of 2003-04				Debt equity ratio for 2003-04 (Previous year) 4(g)/3(e)
		State Govt.	Central Govt.	Holding Companies	Others	Total	Equity	Loans		State Govt.	Central Govt.	Others	Total	
1	2	3(a)	3(b)	3(c)	3(d)	3(e)	4(a)	4(b)	4(c)	4(d)	4(e)	4(f)	4(g)	5
Engineering														
22.	Kumardhubi Metal Casting & Engineering Ltd.	---	---	110.00	107.00	217.00	--	--	---	---	---	663.44	663.44	3.06:1 (3.06:1)
Sector wise total		---	---	110.00	107.00	217.00	--	--	---	---	---	663.44	663.44	3.06:1 (3.06:1)
Electronics														
23	Beltron Video Systems Ltd.	---	---	504.71	---	504.71	--	--	---	---	---	450.87	450.87	0.89:1 (0.89:1)
24	Beltron Mining System Ltd.	---	---	248.24	---	248.24	--	--	---	---	---	---	---	---
25	Beltron Informatics Ltd.	---	---	0.28	---	0.28	--	--	---	---	---	---	---	---
Sector-wise total		---	---	753.23	---	753.23	--	--	---	---	---	--	450.87	0.60:1 (0.60:1)

Sl. No	Sector and name of the company	Paid up capital at the end of the current year					Equity /loans received out of budget during the year		Others loans received during the year	Loans outstanding at the close of 2003-04				Debt equity ratio for 2003-04 (Previous year) 4(g)/3(e)
		State Govt.	Central Govt.	Holding Companies	Others	Total	Equity	Loans		State Govt.	Central Govt.	Others	Total	
1	2	3(a)	3(b)	3(c)	3(d)	3(e)	4(a)	4(b)	4(c)	4(d)	4(e)	4(f)	4(g)	5
Textiles														
26	Bihar State Textile Corporation Ltd.	537.00	---	---	---	537.00	--	--	---	223.66	---	--	223.66	0.42:1 (0.42:1)
	Sector wise total	537.00	---	---	---	537.00	--	--	---	223.66	---	--	223.66	0.42:1 (0.42:1)
Handloom and Handicrafts														
27	Bihar State Handloom & Handicrafts Corporation Ltd.♦	999.98	---	---	---	999.98	--	--	---	115.78	---	--	115.78	0.12:1 (0.12:1)
	Sector-wise total	999.98	---	---	---	999.98	--	--	---	115.78	---	--	115.78	0.12:1 (0.12:1)
Sugar														
28	Bihar State Sugar Corporation Ltd.	2,000.00	---	---	---	2,000.00	--	--	---	31,406.27	---	--	31,406.27	15.7:1 (15.7:1)
	Sector wise total	2,000.00	---	---	---	2,000.00	--	--	---	31,406.27	---	--	31,406.27	15.7:1 (15.7:1)
Cement														
29	Bihar State Cement Corporation Ltd.	---	---	0.07	---	0.07	--	--	---	3.17	---	--	3.17	45.29:1 (45.29:1)
	Sector wise total	---	---	0.07	---	0.07	--	--	---	3.17	---	--	3.17	45.29:1 (45.29:1)
Drugs Chemicals and Pharmaceuticals														
30	Bihar State Pharmaceuticals and Chemicals Development Corporation Ltd.	1,500.00 (77.88)	---	---	---	1,500.00 (77.88)	--	--	---	419.51	---	--	419.51	0.26:1 (0.27:1)

♦ The company has been ordered to be wound up by the Patna High Court.

Sl. No	Sector and name of the company	Paid up capital at the end of the current year					Equity /loans received out of budget during the year		Others loans received during the year	Loans outstanding at the close of 2003-04				Debt equity ratio for 2003-04 (Previous year)
		State Govt.	Central Govt.	Holding Companies	Others	Total	Equity	Loans		State Govt.	Central Govt.	Others	Total	
1	2	3(a)	3(b)	3(c)	3(d)	3(e)	4(a)	4(b)	4(c)	4(d)	4(e)	4(f)	4(g)	5
31	Bihar Maize Product Ltd.	---	---	0.07 (73.68)	---	0.07 (73.68)	--	--	---	---	---	2.16	2.16	0.03:1 (0.03:1)
32.	Bihar Drugs & Chemicals Ltd.	---	---	400.00	---	400.00	--	--	---	127.99	---	--	127.99	0.32:1 (0.32:1)
	Sector wise total	1,500.00 (77.88)	---	473.75	---	1,973.75 (77.88)	--	--	---	547.50	---	2.16	549.66	0.27:1 (0.27:1)
Financing														
33.	Bihar Panchayati Raj Finance Corporation Ltd.	130.83	---	---	13.37	144.20	--	--	---	---	---	-	---	---
	Sector wise total	130.83	---	---	13.37	144.20	--	--	---	---	---	--	---	---
Miscellaneous Sector														
34	Bihar State Export Corporation Ltd.*	200.00	---	---	---	200.00	--	--	---	121.77	---	--	121.77	0.61:1 (0.61:1)
	Sector wise total	200.00	---	---	---	200.00	--	--	---	121.77	---	--	121.77	0.61:1 (0.61:1)
	Total (C)	12,806.64 (84.88)	49.00	2,891.71 (475.05)	258.96 (78.69)	16000.31 (638.62)	--	1.27	--	50078.80	41.8	3912.84	54033.44	3.2:1 (3.29:1)
	GRAND TOTAL (A +B+C)	51,506.20 (446.82)	2,754.78	2,891.71 (475.05)	4,255.49 (82.88)	61,408.18 (1004.75)	--	5,317.00	--	5,91,676.55	205.17	59,893.15	6,51,774.87	10.4:1 (13.91:1)

* The company has been ordered to be wound up by the Patna High Court.

* Loans outstanding at the close of 2003-2004 represents long term loans only.

Note: - Except for the companies which have finalised their accounts for the year 2003-04 the figures are provisional and as given by the companies and corporations.

ANNEXURE - 2

(Referred to in Paragraph Nos. 1.7, 1.13, 1.18 & 1.19)

Summarised Financial results of Government companies and Statutory corporations for the latest year for which accounts were finalised

(Figures in columns 7 to 12 and 15 are rupees in lakh)

Sl. No.	Sector and Name of Company	Name of Department	Date of Incorporation	Period of Accounts	Year in which accounts finalised	Net Profit (+)/ Loss (-)	Net impact of Audit comments	Paid up capital (including share deposit money)	Accumulated profit (+)/loss(-)	Capital employed (A)	Total Return on capital employed (B)	Percentage of total return on capital employed	Arrears of accounts in terms of years	Turnover	Man Power
1	2	3	4	5	6	7	8	9	10	11	12	13	14	15	16
A Working Government Companies															
Agriculture and Allied															
1.	Bihar Rajya Beej Nigam Ltd.	Agriculture	18.7.1977	1993-94	2003-04	(-) 340.00	---	370.79	(-) 2,745.00	1,711.30	(-) 60.25	---	10	1,473.70	142
2.	Bihar Rajya Matsya Vikas Nigam Ltd.	Animal Husbandry & Fisheries	23.3.1980	1992-93	1996-97	(-) 22.16	---	174.75	(-) 191.54	174.19	(-) 4.77	---	11	--	44
Sector wise total						(-) 362.16	---	545.54	(-) 2,936.54	1,885.49	(-) 65.02	--	21	1,473.70	186
Electronics															
3.	Bihar State Electronics Development Corporation Ltd.	Industry	21.2.1978	1992-93	2003-04	(-) 92.64	---	565.50	(-) 372.53	869.00	(-) 0.54	----	11	6.54	68
Sector wise total						(-) 92.64	---	565.50	(-) 372.53	869.00	(-) 0.54	---	11	6.54	68
Forest															
4	Bihar State Forest Development Corporation Ltd.	Forest & Environment	10.2.1975	1998-99	2002-03	359.88	---	229.08	--	205.18	398.68	194.30	5	3,542.37	648
Sector wise total						359.88	---	229.08		205.18	398.68	194.30	5	3,542.37	648

Sl. No.	Sector and Name of Company	Name of Department	Date of Incorporation	Period of Accounts	Year in which accounts finalised	Net Profit (+)/ Loss (-)	Net impact of Audit comments	Paid up capital (including share deposit money)	Accumulated profit (+)/loss(-)	Capital employed (A)	Total Return on capital employed (B)	Percentage of total return on capital employed	Arrears of accounts in terms of years	Turnover	Man Power
1	2	3	4	5	6	7	8	9	10	11	12	13	14	15	16
Mining															
5.	Bihar State Mineral Development Corporation Ltd.	Mines & Geology	12.6.1972	1999-2000	2003-04	654.31		997.35	(-) 132.41	1,465.94	654.31	44.63	4	2,423.43	529
Sector wise total						654.31		997.35	(-) 132.41	1,465.94	654.31	44.63	4	2,423.43	529
Construction															
6.	Bihar Police Building Construction Corporation Ltd.	Home (Police)	26.6.1974	1988-89	2000-01	(-) 78.53	---	10.00	(-) 48.86	4.04	(-) 78.53	---	15	50.70	408
7.	Bihar Rajya Pul Nirman Nigam Ltd.	Road Construction	11.6.1975	1991-92	2001-02	(-) 125.17	---	350.00	(-) 613.24	58.28	(-) 122.86	---	12	109.66	714
Sector wise total						(-) 203.70	---	360.00	(-) 662.10	62.32	(-) 201.39	---	27	160.36	1122
Development of Economically Weaker Section															
8.	Bihar State Minorities Finance Corporation Ltd.	Minority Welfare	22.3.1984	1995-96	2003-04	(-) 24.51	Loss understated by Rs 131.01 lakh	205.50	-68.67	193.86	-24.51	--	8	Negligible.	23
9.	Bihar State Backward Classes Finance and Development Corporation.	Welfare	17.6.1993	1994-95	2003-04	39.65	Income overstated by Rs 135.50 lakh	275.00	54.91	1,313.40	106.00	--	9	107.84	16
Sector wise total						15.14	---	480.50	-13.76	1,507.26	81.49		17	107.84	39
Public Distribution															
10.	Bihar State Food and Civil Supplies Corporation Ltd.	Food & Civil Supplies	22.4.1973	1982-83	2003-04	(-) 244.15	---	402.00	(-) 1,596.40	2,328.97	167.57	---	21	13,594.40	1,638
Sector wise total						(-) 244.15	---	402.00	(-) 1,596.40	2,328.97	167.57	--	21	13,594.40	1,638

Audit Report (Commercial) for the year ended 31 March 2004

Sl. No.	Sector and Name of Company	Name of Department	Date of Incorporation	Period of Accounts	Year in which accounts finalised	Net Profit (+)/ Loss (-)	Net impact of Audit comments	Paid up capital (including share deposit money)	Accumulated profit (+)/loss(-)	Capital employed (A)	Total Return on capital employed (B)	Percentage of total return on capital employed	Arrears of accounts in terms of years	Turnover	Man Power
1	2	3	4	5	6	7	8	9	10	11	12	13	14	15	16
Tourism															
11	Bihar State Tourism Development Corporation Ltd.	Tourism	28.11.1980	1992-93	2003-04	21.01	Profit of the corporation overstated by 36.24 lakh.	285.00	(-) 62.27	239.53	21.01	--	11	79.88	275
Sector wise total						21.01	---	285.00	(-) 62.27	239.53	21.01	--	11	79.88	275
Power															
12	Bihar State Hydro Electric Power Corporation Ltd.*	Energy	31.3.1982	1994-95	2002-03	(-) 345.64	The profit of the corporation reduced by Rs 436 lakh after revision of accounts.	8,276.00	(-) 219.50	12,843.08	494.67	---	9	230.48	142
13	Tenughat Vidyut Nigam Ltd.	Energy	26.11.1987	1993-94	2000-01	--		10,000.00		58,852.10		---	10	--	NA
Sector wise total						(-) 345.64	---	18,276.00	(-) 219.50	71,695.18	494.67	--	19	230.48	142
Financing															
14	Bihar State Credit and Investment Corporation Ltd.	Industry	30.1.1975	1997-98	2002-03	(-) 814.80	Loss understated by Rs 1006.69 lakh.	1,512.35	(-) 7,177.23	14,575.50	586.48	4.02	6	--	74
Sector wise total						(-) 814.80	---	1,512.35	(-) 7177.23	14,575.50	586.48	4.02	6		74
Miscellaneous															
15.	Bihar State Text Book Publishing Corporation Ltd.	Education	2.4.1985	1994-95	2001-02	(-) 71.22		47.67	568.26	554.56	(-) 71.22	--	9	824.49	249

* Figures of the company are based on revised accounts of the company for the year 1994-95.

Sl. No.	Sector and Name of Company	Name of Department	Date of Incorporation	Period of Accounts	Year in which accounts finalised	Net Profit (+) Loss (-)	Net impact of Audit comments	Paid up capital (including share deposit money)	Accumulated profit (+)/loss(-)	Capital employed (A)	Total Return on capital employed (B)	Percentage of total return on capital employed	Arrears of accounts in terms of years	Turnover	Man Power
1	2	3	4	5	6	7	8	9	10	11	12	13	14	15	16
16.	Bihar State Film Development and Finance Corporation Ltd.	Industry	6.3.1983	1991-92	2000-01	1.87	---	94.50	(-) 11.56	88.33	1.87	2.12	12	--	8
Sector wise total						(-) 69.85	---	142.17	556.70	642.89	(-) 69.35	--	21	--	257
Total (A)						(-) 1,082.09	---	23,745.50	(-) 12,351.22	95,477.26	2,067.91	--	163	--	--
B Statutory Corporations															
Power															
1.	Bihar State Electricity Board.	Energy Department.	1.4.1958	2000-01	2002-03	(-) 89,492.58	Deficit increased by 3289.21 crore.	---	(-) 8,18,502.00	(-) 1,91,260.00	(-) 2,60,740.00	--	3	2,74,265.00	NA
Sector wise total						(-) 89,492.58	---	---	(-) 8,18,502.00	(-) 1,91,260.00	(-) 2,60,740.00*	--	3	2,74,265.00	NA
Transport															
2.	Bihar State Road Transport Corporation.	Transport Department.	1.5.1959	1998-99	2003-04	(-) 6,629.17	---	10,127.35	(-) 47,384.36	(-) 14,541.75	(-) 4,490.30	-	5	802.76	5,232
Sector wise total						(-) 6,629.17	---	10,127.35	(-) 47,384.36	(-) 14,541.75	(-) 4,490.30	-	5	802.76	5,232
Financing															
3.	Bihar State Financial Corporation.	Industry Department	2.11.1954	2002-03	2003-04	(-) 3829.34	Cumulative loss of the company understated by Rs. 14.37 crore.	7,783.81	(-) 66,295.67	30,634.82	621.89	--	1	1228.36	421
Sector-wise total						(-) 3829.34		7,783.81	(-) 66,295.67	30,634.82	621.89	--	1	1228.36	421

* Based on Separate Audit Report of the year.

Audit Report (Commercial) for the year ended 31 March 2004

Sl. No.	Sector and Name of Company	Name of Department	Date of Incorporation	Period of Accounts	Year in which accounts finalised	Net Profit (+)/ Loss (-)	Net impact of Audit comments	Paid up capital (including share deposit money)	Accumulated profit (+)/loss(-)	Capital employed (A)	Total Return on capital employed (B)	Percentage of total return on capital employed	Arrears of accounts in terms of years	Turnover	Man Power
1	2	3	4	5	6	7	8	9	10	11	12	13	14	15	16
Miscellaneous															
4.	Bihar State Ware-housing Corporation.	Co-operative	29.3.1957	2000-01	2003-04	196.44	Profit of the corporation overstated by 429.84 lakh.	137.10	717.49	1,868.72	196.44	--	3	1098.31	316
Sector wise total						196.44	---	137.10	717.49	1,868.72	196.44	--	3	1098.31	316
Total (B)						(-) 99754.65	---	18,048.26	(-) 9,31,464.54	(-) 1,73,298.21	(-) 2,64,411.97	--	12	--	NA
Grand Total (A+B)						(-) 100836.74	---	41,843.75	(-) 9,43,815.76	(-) 77,820.95	(-) 2,62,344.06	--	175	--	NA
C Non working companies															
Agriculture and Allied															
1.	Bihar State Water Development Corporation. Ltd.	Water Resources	12.4.1973	1978-79	1997-98	216.84	---	500.00	(-) 1,119.69	2670.29	242.30	9.07	25	--	15
2.	Bihar State Dairy Corporation Ltd.	Animal Husbandry & Fisheries	13.3.1972	1991-92	2001-02	4.39	---	672.36	(-) 900.07	568.69	4.39	0.77	12	--	NA
3.	Bihar Hill Area Lift Irrigation Corporation Ltd.	Minor Irrigation	3.6.1975	1982-83	1993-94	(-) 26.39	---	560.00	(-) 85.78	953.41	(-) 13.27	---	21	0.52	NA
4.	Bihar State Agro Industries Development Corporation Ltd.	Agriculture	28.4.1966	1986-87	1995-96	(-) 192.79	---	741.52	(-) 1416.00	510.80	(-) 142.86	---	17	--	NA
5.	Bihar Fruit and Vegetables Development Corporation Ltd.	Agriculture	8.10.1980	1990-91	1996-97	(-) 74.12	---	182.00	(-) 416.70	(-) 14.68	(-) 31.45	---	13	6.58	NA
6.	Bihar Insecticides Ltd.	Industry	27.2.1983	1986-87	1991-92	(-) 103.12	---	57.04	(-) 103.12	234.98	(-) 86.74	---	17	--	62
Sector wise total						(-) 175.19	---	2,712.92	(-) 4041.36	4,923.49	(-) 27.63	--	105	--	

Sl. No.	Sector and Name of Company	Name of Department	Date of Incorporation	Period of Accounts	Year in which accounts finalised	Net Profit (+) Loss (-)	Net impact of Audit comments	Paid up capital (including share deposit money)	Accumulated profit (+)/loss(-)	Capital employed (A)	Total Return on capital employed (B)	Percentage of total return on capital employed	Arrears of accounts in terms of years	Turnover	Man Power
1	2	3	4	5	6	7	8	9	10	11	12	13	14	15	16
Industries (Miscellaneous)															
7.	Bihar State Small Industries Corporation Ltd.	Industry	29.10.1961	1989-90	2002-03	(-) 94.46	Loss increased by Rs 48 lakh	718.48	(-) 1513.63	349.21	7.69	2.20	14	1626.94	145
8.	Bihar State Industrial Development Corporation Ltd.	Industry	5.11.1960	1986-87	--	(-) 588.92	Loss increased by 1079.05 lakh.	1,404.00	(-) 2290.78	2,724.94	(-) 317.13	-	17	--	N.A
9.	Bihar Scooters Ltd.	Industry	19.1.1978	----	----	---	---	--	---	---	---	----	27	--	N.A
10.	Bihar Paper Mills Ltd.	Industry	08.07.1977	1985-86	1997-98	(-) 6.09	---	156.12	(-) 31.06	143.61	(-) 6.09	----	The company is under liquidation since April 04	--	N.A
11.	Bihar State Finished Leather Corporation Ltd.	Industry	20.4.1982	1983-84	1986-87	(-) 149.39	---	146.59	(-) 213.06	615.00	(-) 76.48	---	20	--	252
12.	Bihar State Glazed Tiles and Ceramics Industries Ltd.	Industry	2.4.1984	1985-86	1997-98	(-) 8.48	---	15.52	(-) 51.08	350.00	(-) 17.60	---	18	--	354
13.	Vishwamitra Paper Industries Ltd.	Industry	18.6.1983	1984-85	1988-89	(-) 0.91	---	40.37	(-) 1.45	69.00	---	---	19	--	18
14.	Jhanjharpur Paper Industries Ltd.	Industry	27.2.1982	1985-86	1991-92	(-) 1.33	---	42.41	(-) 2.09	59.32	(-) 1.33	---	18	--	12
15.	Bihar State Tannin Extracts Ltd.	Forest & Environment	27.1.1984	1988-89	1993-94	(-) 31.56	---	103.30	(-) 66.59	249.15	(-) 15.86	---	15	--	N.A
16.	Bihar Solvent and Chemical Ltd.	Forest & Environment	August 1979	1986-87	1995-96	(-) 32.31	---	66.22	(-) 32.31	167.23	(-) 25.86	---	17	--	N.A
17.	Synthetic Resins (Eastern) Ltd.	Industry	14.12.1982	1983-84	1987-88	(-) 0.69	---	9.00	(-) 0.73	17.41	(-) 0.69	---	20	--	12
18.	Magadh Minerals Ltd.	Industry	22.11.1984	----	----	----	---	----	----	---	---	----	20	--	N.A

Audit Report (Commercial) for the year ended 31 March 2004

Sl. No.	Sector and Name of Company	Name of Department	Date of Incorporation	Period of Accounts	Year in which accounts finalised	Net Profit (+)/ Loss (-)	Net impact of Audit comments	Paid up capital (including share deposit money)	Accumulated profit (+)/loss(-)	Capital employed (A)	Total Return on capital employed (B)	Percentage of total return on capital employed	Arrears of accounts in terms of years	Turnover	Man Power
1	2	3	4	5	6	7	8	9	10	11	12	13	14	15	16
19.	Bhawani Active Carbon Ltd.	Industry	26.3.1985	1985-86	1989-90	(-) 1.38	---	2.39	(-) 1.38	1.05	(-) 1.38	---	18	--	N.A
20.	Bihar State Leather Industries Development Corporation Ltd.	Industry	23.3.1974	1981-82	1996-97	(-) 36.25	---	514.00	(-) 254.80	215.94	(-) 36.25	---	22	--	419
21	Bihar State Construction Corporation Ltd.	Water Resources	22.8.1974	1985-86	2002-03	56.91	---	700.00	(-) 404.05	398.57	61.34	15.39	18	1870.12	1479
Sector wise total						(-) 894.86	---	3,918.40	(-) 4,863.01	5,360.43	(-) 429.64	15.39	263	--	--
Engineering															
22.	Kumardhubi Metal Casting and Engineering Ltd.	Industry	25.10.1983	1994-95	1995-96	(-) 238.84	---	217.00	(-) 815.97	91.13	(-) 151.00	---	9	1089.25	N.A
Sector wise total						(-) 238.84	---	217.00	(-) 815.97	91.13	(-) 151.00	---	9	--	N.A
Electronics															
23.	Beltron Video System Ltd.	Industry	19.9.1984	1987-88	1998-99	(-) 54.51	---	121.45	(-) 21.77	101.98	(-) 9.57	---	16	75.46	N.A
24.	Beltron Mining System Ltd.	Industry	30.1.1986	1989-90	2002-03	(-) 9.57	---	125.84	(-) 49.33	52.48	(-) 9.57	---	14	41.38	N.A
25.	Beltron Informatics Ltd.	Industry	1.3.1988	---	---	---	---	---	---	---	---	---	17	--	N.A
Sector wise total						(-) 64.08	---	247.29	(-) 71.10	154.46	(-) 19.14	---	47	--	N.A
Textiles															
26	Bihar State Textile Corporation Ltd.	Industry	21.2.1978	1987-88	1995-96	(-) 9.18	---	498.05	(-) 32.22	372.35	(-) 9.18	---	16	--	40
Sector wise total						(-) 9.18	---	498.05	(-) 32.22	372.35	(-) 9.18	---	--	--	N.A
Handloom and Handicrafts															
27	Bihar State Handloom and Handicrafts Corporation Ltd.	Industry	21.5.1974	1983-84	1996-97	(-) 9.52	---	627.98	(-) 43.81	707.51	1.46	0.21	Under liquidation since March 04	--	NA

Sl. No.	Sector and Name of Company	Name of Department	Date of Incorporation	Period of Accounts	Year in which accounts finalised	Net Profit (+)/ Loss (-)	Net impact of Audit comments	Paid up capital (including share deposit money)	Accumulated profit (+)/loss(-)	Capital employed (A)	Total Return on capital employed (B)	Percentage of total return on capital employed	Arrears of accounts in terms of years	Turnover	Man Power
1	2	3	4	5	6	7	8	9	10	11	12	13	14	15	16
Sector wise total						(-) 9.52	---	627.98	(-) 43.81	707.51	1.46	0.21		--	--
Sugar															
28.	Bihar State Sugar Corporation Ltd.	Sugar Cane	26.12.1974	1984-85	1996-97	(-) 919.85	---	997.00	(-) 7,231.46	(-) 1,023.69	(-) 320.24	---	19	--	NA
Sector wise total						(-) 919.85	---	997.00	(-) 7,231.46	(-) 1,023.69	(-) 320.24		19	--	--
Cement															
29.	Bihar State Cement Corporation Ltd.	Industry	17.10.1981		---	---	---	---	---	---	---	----	23	--	NA
Sector wise total						---	---	-	-	-	-	-			
Drugs, Chemicals & Pharmaceuticals															
30.	Bihar State Pharmaceuticals and Chemicals Development Corporation Ltd.	Industry	22.2.1978	1985-86	1992-93	(-) 16.83	---	361.62	(-) 73.84	687.48	(-) 16.83	---	18	--	59
31.	Bihar Maize Products Ltd.	Industry	2.9.1982	1983-84	1987-88	(-) 2.70	---	66.59	(-) 6.14	80.11	---	---	20	--	NA
32.	Bihar Drugs and Chemicals Ltd.	Industry	12.8.1983	1985-86	1991-92	(-) 3.02	---	93.67	(-) 16.09	115.65	(-) 3.02	---	18	--	48
Sector wise total						(-) 22.55	---	521.88	(-) 96.07	883.24	(-) 19.85		56	--	--
Financing															
33.	Bihar Panchayati Raj Financial Corporation Ltd.	Panchayati Raj	20.4.1974	1984-85	1991-92	(-) 1.19	---	144.20	(-) 2.69	585.60	22.52	3.85	19	--	NA
Sector wise total						(-) 1.19	---	144.20	(-) 2.69	585.60	22.52	3.85	19	--	
Miscellaneous															
34	Bihar State Export Corporation Ltd.	Industry	29.12.1974	1991-92	1999-00	(-) 10.50	---	200.00	(-) 0.95	375.36	0.93	0.25	Under liquidation since May 04	494.35	54
Sector wise total						(-) 10.50	---	200.00	(-) 0.95	375.36	0.93	0.25	11	494.35	54

Audit Report (Commercial) for the year ended 31 March 2004

Sl. No.	Sector and Name of Company	Name of Department	Date of Incorporation	Period of Accounts	Year in which accounts finalised	Net Profit (+)/ Loss (-)	Net impact of Audit comments	Paid up capital (including share deposit money)	Accumulated profit (+)/loss(-)	Capital employed (A)	Total Return on capital employed (B)	Percentage of total return on capital employed	Arrears of accounts in terms of years	Turnover	Man Power
1	2	3	4	5	6	7	8	9	10	11	12	13	14	15	16
	Total (C)					(-) 2345.76	---	10,084.72	(-) 17,198.64	12,429.88	(-) 951.77		557	--	--
	Grand Total (A+B+C)					(-) 103182.50		51,928.47	(-) 96,1014.40	(-) 65,391.07	(-) 263295.83		732	--	--

ANNEXURE - 3

(Referred to in Paragraph Nos. 1.5 & 1.16)

Statement showing subsidy received, guarantees received, waivers of dues, loans on which moratorium allowed and loans converted into equity during the year and subsidy receivable and guarantees outstanding at the end of March 2004*

(Figures in brackets indicate guarantee outstanding at the end of the year)

(Figures in columns 3(a) to 7 are rupees in lakh)

Sl.No	Name of the Public Sector Undertaking	Subsidy received during the year				Guarantees received during the year and outstanding at the end of the year					Waiver of dues during the year				Loans on which moratorium allowed	Loan converted in equity during the year
		Central Govt.	State Govt.	Others	Total	Cash credit from banks	Loans from other sources	Letters of credits opened by banks in respect of imports	Payment obligation under agreement with foreign consultants or contracts	Total	Loans repayment written off	Interest waived	Penal interest waived	Total		
1	2	3(a)	3(b)	3(c)	3(d)	4(a)	4(b)	4(c)	4(d)	4(e)	5(a)	5(b)	5(c)	5(d)	6	7
A	Working Government Companies															
1.	Bihar Rajya Beej Nigam Ltd.	--	--	--	--	(389.81)	--	--	--	(389.81)	--	--	--	--	--	--
2	Bihar State Backward Classes Finance Development Corporation Ltd.	-	-	-	-	-	(1,926.63)	--	--	(1,926.63)	--	--	--	--	--	--
3	Bihar state Minorities finance corporation Ltd.	-	-	-	-	-	(949.55)	--	--	(949.55)	--	--	--	--	--	--
	Total A	-	-	-	-	(389.81)	(2,876.18)	---	---	(3265.99)	--	--	--	--	--	--
B	Working Statutory Corporations															
1.	Bihar State Electricity Board	-	-	-	-	-	(6,886.91) [*]	-	-	(6,886.91)	--	--	--	--	--	--
2	Bihar State Financial Corporation Ltd.	-	9.49	-	-	-	(8,752.50)	-	-	(8,752.50)	--	--	--	--	---	--
	Total B	-	9.49	--	-	-	(15,639.41)	-	-	(15,639.41)	--	--	--	--	--	--
	Grand Total (A+B)		9.49	-	-	(389.81)	(18,515.59)	-	-	(18,905.40)	--	--	--	--	--	-

* It represents share of Bihar State Electricity Board (49.63%) in guarantee of Rs. 13,876.51 lakh outstanding on 31 March 2004.

Sl.No	Name of the Public Sector Undertaking	Subsidy received during the year				Guarantees received during the year and outstanding at the end of the year					Waiver of dues during the year				Loans on which moratorium allowed	Loan converted in equity during the year
		Central Govt.	State Govt.	Others	Total	Cash credit from banks	Loans from other sources	Letters of credits opened by banks in respect of imports	Payment obligation under agreement with foreign consultants or contracts	Total	Loans repayment written off	Interest waived	Penal interest waived	Total		
1	2	3(a)	3(b)	3(c)	3(d)	4(a)	4(b)	4(c)	4(d)	4(e)	5(a)	5(b)	5(c)	5(d)	6	7
C	Non Working Government Companies															
1	Bihar State Leather Industries Development Corporation Ltd.	-	-	-	-	(62.48)	-	-	-	(62.48)	--	--	--	--	--	-
2	Bihar State Agro Industries Development Corporation Limited.	-	-	-	-	(1.45)	-	-	-	(1.45)	--	--	--	--	--	-
	Total C	-	-	-	-	(63.93)	-	-	-	(63.93)	-	-	-	-	-	-
	Grand Total (A+B+C).	-	9.49	-	-	(453.74)-	(18,515.59)	-	-	(18,969.33)	--	--	--	--	--	--

* Note: - Except for the companies which have finalised their accounts for the year 2003-04 the figures are provisional and as given by the companies and corporations.

ANNEXURE – 4

(Referred to in Paragraph No. 1.7)

Statement showing financial position of Statutory corporations

(Rupees in crore)

1. Bihar State Electricity Board[⊕]			
Particulars	1999-2000	2000-01	2001-02[→]
A Liabilities			
Equity Capital	--	--	--
Loans from Govt.	4,938.34	5,399.76	3,291.26
Other long term loans (including bonds)	1,016.73	844.41	333.53
Reserves and Surplus (excluding depreciation reserve)	241.67	0.91	0.45
Current Liabilities and provisions	5,738.73	7,154.20	5,069.85
Total – A	11,935.47	13,399.28	8,695.09
B Assets			
Gross fixed assets	3,016.33	3,160.38	2,101.11
Less depreciation	1,688.82	1,887.13	1,333.86
Net fixed assets	1,327.51	1,273.25	767.25
Capital work-in- progress	228.92	224.49	238.36
Current assets	5,462.76	3,743.86	3,545.31
Investments	269.98	205.27	219.86
Miscellaneous expenditure	-	-	-
Deficits	4646.30	8185.02	3755.50
Total – B	11,935.47	13,631.89	8,526.28
C Capital employed*	1,280.46	(-) 1912.60	(-) 518.93
2. Bihar State Road Transport Corporation			
Particulars	2001-02	2002-03	2003-04
A Liabilities			
Capital (including capital loan & equity capital)	101.27	101.27	101.27
Borrowings (Govt.)	65.66	77.11	79.41

[⊕] figures are as per information provided by the corporation.

[→] Figures are of bifurcated Bihar State Electricity Board

* Capital employed represents net fixed assets (including Capital Work-in-Progress) plus working capital. While working out working Capital the element of deferred cost and investments are excluded from the current assets.

(Others)	2.87	-	-
Funds**	0.30	0.30	0.30
Trade dues and other current liabilities (including provisions)	492.08	684.28	723.39
Total – A	662.19	862.96	904.37
B Assets			
Gross Block	68.58	74.65	111.37
Less depreciation	52.18	54.12	59.70
Net fixed assets	16.40	20.53	51.67
Capital works in progress (including cost of chassis)	-	-	-
Investments	-	-	-
Current Assets, loans and advances	90.22	229.59	192.87
Accumulated losses	555.56	612.84	659.83
Total – B	662.19	862.96	904.37
C Capital employed[#]	(-) 385.46	(-) 434.16	(-) 478.85
3. Bihar State Financial Corporation[♦]			
Particulars	2001-02	2002-03	2003-04
A Liabilities			
Paid-up capital*	77.88	77.83	77.83
Share application money	--	--	--
Reserve fund, other reserves and surplus	10.05	10.05	10.05
Borrowings			
Bonds and Debentures	107.62	99.65	87.52
Fixed Deposits	-		
I.D.B.I. & S.I.D.B.I.	114.31	114.31	111.81
Reserve Bank of India	--	--	--
Loan in towards share capital			
(a) State Govt.	--		
(b) I.D.B.I	--		
Refinance Loan	--	--	--
Other including State Govt.	1.00	--	--
Other liabilities and provisions	363.93	408.29	201.90
Total – A	674.79	710.13	489.13
B Assets			
Cash and Bank balance	22.19	26.26	15.99

** Excluding depreciation funds.

Capital employed represents net fixed assets (including capital work-in-progress) plus working capital.

♦ Figures are as per information provided by the corporation.

* Paid-up capital includes share application money.

Investments	0.06	0.06	0.04
Loans and advances	295.44	289.35	285.23
Net fixed assets	0.79	0.60	0.60
Other assets	6.29	5.55	6.61
Miscellaneous expenditure	--	--	--
Total – B	324.77	321.82	308.49
C Capital employed**	310.86	301.84	294.53
4. Bihar State Warehousing Corporation [^]			
Particulars	2000-01	2001-02	2002-03
A Liabilities			
Paid-up capital	1.37	1.37	1.37
Reserves and surplus	16.53	8.59	10.38
Subsidy from Government	--	Nil	Nil
Borrowings- Govt. Others	--	Nil	Nil
Trade dues and other liabilities (including provisions)	4.23	4.44	4.50
Total -A	22.13	14.44	16.25
B Assets			
Gross block	6.82	5.23	7.16
Less depreciation	2.14	0.15	0.17
Net fixed assets	4.68	5.08	6.99
Capital work-in-progress			
Current assets, loans and advances	17.45	19.21	20.30
Profit and Loss Account			
Total – B	22.13	24.28	27.29
C Capital employed ^π	17.90	19.85	22.79

** Capital employed represents the mean of the aggregate of opening and closing balances of paid-up capital, reserves (other than those which have been funded specifically and backed by investment outside) bonds, deposits and borrowings (including refinance).

[^] Figures are as per information provided by the corporation.

^π Capital employed represents net fixed assets (including capital work-in-progress) plus working capital.

ANNEXURE - 5

(Referred to in Paragraph No.1.7)

Statement showing working results of Statutory corporations

(Rupees in crore)

1. Bihar State Electricity Board[▲]				
Sl. No.	Particulars	1999-00	2000-01	2001-02[↑]
1	(a) Revenue Receipts	2,286.17	2,742.65	1,336.80
	(b) Subsidy from the Government	629.00	834.30	682.10
	Total	2915.17	3576.95	2,018.90
2	Revenue Expenditure (net of expenses capitalised) including write off intangible assets but excluding depreciation and Interest)	2,799.99	3,366.99	1,644.90
3	Gross Surplus/(-) deficit for the year (1-2)	115.18	(+) 209.96	374.00
4	Adjustment relating to previous years	(-) 226.29	(-) 2643.80	(-) 420.00
5	Final Gross Surplus/(-)deficit for the year (3+4)	(-) 111.11	(-) 2433.84	(-) 46.00
6	Appropriation			
(a)	Depreciation (less capitalised)	184.73	196.01	135.62
(b)	Interest on capital loans	522.24	625.04	371.76
(c)	Interest on other loans, bonds, advances etc.	196.96	305.29	96.09
(d)	Total Interest on loans and finance charges (b+c)	719.20	930.33	467.85
(e)	Less: Interest capitalised	23.00	21.45	22.63
(f)	Net Interest Charged to revenue (d-e)	696.20	908.88	445.22
(g)	Total appropriation (a+f)	880.93	1,104.89	580.84
7	Surplus (+)/deficit (-) before account of subsidy from State Government (5-6(g) -1(b))	(-) 1621.04	(-) 494.65	(-) 1308.94
8	Net surplus/(-) deficit 5-6 (g)	(-) 992.04	(-) 1,328.95	(-) 626.84
9	Total return on Capital employed*	(-) 295.84	(-) 2,629.85	(-) 181.62
10	Per centage of return on Capital employed	--	(-) 137.50	(-) 35.00
2. Bihar Road Transport Corporation[▶]				
	Particulars	2001-02	2002-03	2003-04
	Operating			
(a)	Revenue	18.36	21.01	55.98

▲ Figures are as per information provided by the corporation.

↑ Figures are of bifurcated Bihar State Electricity Board

* Total return on capital employed represents Net surplus/deficit plus total interest charged to profit and loss account (less interest capitalised).

▶ Figures are as per information provided by the corporation.

(b)	Expenditure	50.66	54.98	81.26
(c)	Surplus (+)/Deficit (-)	(-) 32.30	(-) 33.96	(-) 25.28
	Non-operating			
(a)	Revenue	5.04	4.45	8.36
(b)	Expenditure	25.71	27.77	30.07
(c)	Surplus (+)/Deficit (-)	(-) 20.67	(-) 23.32	(-) 21.71
	Revenue	23.40	25.46	64.34
	Expenditure	76.37	82.74	111.33
	Net Profit (+)/ Loss (-)	(-) 52.97	(-) 57.28	(-) 46.99
	Interest on capital and loans	11.57	27.77	30.07
	Total return on Capital employed	(-) 41.40	(-) 29.51	(-) 16.92
3.	Bihar State Financial Corporation ▼			
	Particulars	2001-02	2002-03	2003-04
1	Income			
i)	Interest on loans	11.17	12.28	7.24
ii)	Other income	0.91	0.96	0.92
	Total – 1	12.08	13.24	8.16
2	Expenses *			
(a)	Interest on long term loans and short term loans	47.50	44.51	7.51
(b)	Provision for non-performing assets	--	--	0.12
(c)	Other Expenses	7.51	7.02	6.92
	Total-2	55.01	51.53	14.55
3	Profit (+)/Loss (-) before tax (1-2)	(-) 42.93	(-) 38.29	(-) 6.39
4	Provision for tax	---	-	---
5	Other appropriations	---	-	---
6	Amount available for dividend #	---	-	---
7	Dividend	---	-	---
8	Total return on capital employed	(-) 4.57	6.22	8.16
9	Percentage of return on capital employed	1.47	--	2.77
4.	Bihar State Warehousing Corporation ◀			
	Particulars	2000-01	2001-02	2002-03
1	Income			
(a)	Ware housing charges	4.42	4.47	6.30
(b)	Other income	7.17	6.34	10.70
	Total-1	11.59	10.81	17.00

▼ Figures are as per information provided by the corporation.

* Provision for Non-Performing Assets for the year may be distinctly shown under head expenses.

Represents profit of current year available for dividend after considering the specific reserve.

◀ Figures are as per information provided by the corporation.

2	Expenses			
(a)	Establishment Charges	2.64	2.80	2.72
(b)	Other Expenses	7.09	6.02	11.48
	Total-2	9.73	8.82	14.20
3	Profit (+)/Loss (-) before tax	1.86	1.98	2.79
4	Prior period adjustment	0.04	0.25	--
5	Other appropriation	1.00	1.00	1.00
6	Amount available for dividend	0.83	0.73	1.79
7	Dividend for the year	--	--	--
8	Total return on Capital employed	1.86	1.98	2.79
9	Percentage of return on Capital employed	10.39	8.68	12.24

ANNEXURE - 6

(Referred to in paragraph No. 1.12)

Statement showing operational performance of Statutory corporations

1. Bihar State Electricity Board[◊]

Particulars	1999-2000	2000-2001	2001-02 [←]
Installed capacity	(MW)		
(a) Thermal	1,393.50	1,393.50	540.00
(b) Hydro	149.20	149.20	19.20
(c) Gas	--	--	-
(d) Other	5.93	5.93	-
Total	1,548.63	1,548.63	559.20
Normal maximum demand	1,400.00	NA	NA
	(MKWH)		
Power generated:			
(a) Thermal	2,245.59	2,111.25	674.47
(b) Hydro	177.54	100.86	8.19
(c) Gas	--	--	-
(d) Other	--	--	-
Total	2,423.13	2,212.11	682.66
Less: Auxiliary consumption			
(a) Thermal (percentage)	334.08 (14.88)	307.45 (14.51)	87.10 (12.91)
(b) Hydro (percentage)	1.17 (0.66)	1.00 (1.00)	1.03 (12.54)
(c) Gas (percentage)	--	--	--
(d) other (percentage)	--	--	--
Total (percentage)	335.25 (13.84)	308.45 (14.51)	88.13 (12.91)
Net power generated	2,087.88	1,904.66	594.53
Power purchased:	8,538.96	8,692.02	5,620.56
Total power available for sale	10,626.84	10,596.60	6,215.09
Power sold:	7,662.21	7,620.91	3,840.83
Transmission and distribution losses	2,964.63	2,957.70	2,374.26
Plant Load factor (Percentage)	23.89	22.52	17.90
Percentage of transmission and distribution losses to total power available for sale	27.90	28.08	38.20
Number of villages/towns electrified	NA	NA	NA
Number of pump sets/wells energised	NA	NA	NA
Number of sub-stations	NA	47	47

[◊] Figures are as per information provided by the corporation.

[←] Figures are of bifurcated Bihar State Electricity Board

Transmission/distribution lines (in kms)		4,691.73	4,691.73
(a) High/medium voltage	NA	NA	NA
(b) Low voltage	NA	NA	NA
Connected load (in MVA)	NA	3,075.40	3155.40
Number of consumers (in lakh)	NA	25	18.91
Number of employees	NA	30,638	20,595
Consumer/employees Ratio	NA	NA	92:1
Total expenditure on staff during the year (Rs in crore)	NA	NA	NA
Percentage of expenditure on staff to total revenue expenditure	NA	NA	NA
Units sold		(MKWH)	
(a) Agriculture	1,525.94	1,419.92	1,105.54
(Percentage share to total units sold)	(19.92)	18.63	(28.78)
(b) Industrial	3,622.80	3,551.40	827.65
(Percentage share to total units sold)	(47.28)	46.60	(21.55)
(c) Commercial	415.15	486.69	276.15
(Percentage share to total units sold)	(5.42)	6.39	(7.19)
(d) Domestic	1,036.15	1,292.72	1,015.05
(Percentage share to total units sold)	(13.52)	16.96	(26.43)
(e) Others	1,062.17	870.18	616.44
(Percentage share to total units sold)	(13.86)	11.42	(16.05)
Total	7,662.21	7,620.91	3,840.83
Particulars		(Paise per KWH)	
(a) Revenue (excluding subsidy from Government)	298.37	2,742.65	1,336.80
(b) Expenditure*	389.54	586.79	1,757.89
(c) Profit (+)/Loss (-)	(-) 91.17	226.90	206.84
(d) Average subsidy claimed from Government (in rupees)	0.82	834.30	682.10
(e) Average interest charges (in rupees)	0.91	NA	467.85

-
- Revenue expenditure includes depreciation but excludes interest on long term loans.

2. Bihar State Road Transport Corporation^o

Particulars	2001-02	2002-03	2003-04
Average number of vehicles held	1,540	873	362
Average number of vehicles on road	178	158	284
Percentage of utilisation of vehicles	12	18	78
Number of employees	5,978	5,300	4,962
Employee vehicle ratio	1:34	1:27	1:17
Number of routes operated at the end of the year	143	145	255
Route kilometres	31,431	3,1659	55,220
Kilometres operated (in lakh)			
(a) Gross	156.46	148.82	250.50
(b) Effective	152.54	144.49	246.19
(c) Dead	3.92	4.33	4.31
Percentage of dead kilometres to gross kilometres	2.51	2.91	1.72
Average kilometres covered per bus per day	236.00	251.00	238.00
Average Operating revenue per kilometre (Paise)	1173	1411	2234
Increase(+) / Decrease(-) in operating revenue over previous year's income (%)	0.33	(+) 12.02	(+) 58.37
Average expenditure per kilometer (Paise)	3237	3694	3244
Increase(+) / Decrease(-) in operating expenditure over previous year's expenditure (%)	(-) 13.49	(+) 11.23	(-) 12.18
Profit(+)/Loss(-) per kilometre (Paise)	(-) 3,385.00	(-) 3,848.00	(-) 1,815.00
Number of operating depots	32	32	32
Average number of break-down per lakh kilometres	1.39	0.12	0.78
Average number of accidents per lakh kilometres	0.09	0.08	0.02
Passenger kilometre operated (in crore)	1.53	56.78	71.05
Occupancy ratio in percent	66	62	57
Kilometres obtained per litre of			
(a) Diesel	4.04	3.99	4.07
(b) Engine Oil	N.A.	N.A.	N.A.

^o Figures are as per information provided by the corporation.

3. Bihar State Warehousing Corporation[•]

Particulars	2000-01	2001-02	2002-03
Numbers of the centres covered	46	46	46
Storage capacity created upto the end of the year (tonnes in lakh)	2.62	2.52	1.01
Owned godowns	0.97	1.05	12.12
Hired godowns	1.66	1.47	15.92
Total	2.62	2.52	28.04
Average capacity utilised during the years (in lakh tonnes)	2.21	2.12	22.42
Per centage of utilisation	84	84	80
(a) Average revenue per tonne per year (rupees)	524.43	40.00	493
(b) Average expenditure per tonne per year (rupees)	440.27	31.60	51.42

4. Bihar State Financial Corporation[▪]

(Rupees in lakh)

Particulars	2001-02		2002-03		2003-04 (Provisional)	
	No.	Amount	No.	Amount	No.	Amount
Applications pending at the beginning of the year	--	--	--	--	--	--
Applications received	--	--	--	--	--	--
Total	--	--	--	--	--	--
Applications sanctioned	--	--	--	--	--	--
Applications cancelled/ Withdrawn/rejected	--	--	--	--	--	--
Application pending at the close of the year	--	--	--	--	--	--
Loans disbursed during the year	2	4.34	1	1.57	--	--
Loans outstanding at the close of the year	6,307	1,83,518.05	6,256	2,10,194.00	6,185	2,38,941.14
Amount overdue for recovery at the close of the year	--	--	--	--	--	--
a) Principal	6,307	26,560.74	6,256	26,532.24	6,185	26,429.94
b) Interest	6,307	1,55,761.15	6,256	1,82,969.20	6,185	2,12,205.53
Total	6,307	1,82,321.89		2,09,501.44	6,185	2,38,635.47
Amount involved in recoveries certificate cases	--	--	--	--	--	--
Percentage of default to total	--	99.34	--	99.67	--	99.87

[•] Figures are as per information provided by the corporation.

[▪] Figures are as per information provided by the corporation.

loan outstanding						
------------------	--	--	--	--	--	--

ANNEXURE - 7

(Referred to in Paragraph No 1.20)

Names of the Government Companies of Bihar which are to be wound up

Sl.No.	Name of the Company
1	Bihar State Leather Industries Development Corporation Limited.
2	Bihar State Handloom And Handicrafts Corporation Limited.
3	Bihar State Pharmaceuticals and Chemical Development Corporation Limited.
4	Bihar State Small Industries Corporation Limited.
5	Bihar State Sugar Corporation Limited
6	Bihar State Agro Industries Development Corporation Limited.
7	Bihar State Textile Corporation Limited.
8	Bihar State Fruit and Vegetables Development Corporation Limited.
9	Bihar State Forest Development Corporation Limited.
10	Bihar Panchayati Raj Finance Corporation Limited.
11	Bihar State Film Development and Finance Corporation Limited.
12	Bihar State Electronic Development Corporation Limited.
13	Bihar State Industrial Development Corporation Limited.
14	Bihar State Construction Corporation Limited.
15	Bihar State Police Building Construction Corporation Limited.
16	Bihar Rajya Pul Nirman Nigam Limited.
17	Bihar State Export Corporation Limited.

Names of the Government Companies of Bihar which have filed petition for winding up in the Patna High Court

Sl.No.	Name of the Company
1.	Bihar State Leather Industries Development Corporation Limited.
2.	Bihar State Handloom And Handicrafts Corporation Limited. *
3.	Bihar State Pharmaceuticals and Chemical Development Corporation Limited.
4.	Bihar State Small Industries Corporation Limited.
5.	Bihar State Sugar Corporation Limited
6.	Bihar State Agro Industries Development Corporation Limited.
7.	Bihar State Textile Corporation Limited.
8.	Bihar Finished Leather Limited.
9.	Bihar State Film Development and Finance Corporation Limited.
10.	Bihar State Electronic Development Corporation Limited.
11.	Bihar Paper Mills Limited*.
12.	Beltron Video Systems Limited.
13.	Beltron Mining Systems Limited.
14.	Bihar Rajya Pul Nirman Nigam Limited.
15.	Bihar State Export Corporation Limited. *

* Companies ordered to be wound up by the Patna High Court.

ANNEXURE - 8
(Referred to in Paragraph No 1.28)

Observations of the Statutory Auditor on the Internal Audit / Internal control of the companies

Sl No.	Name of the company.	Year of accounts.	Observation.
1	Bihar State Minorities Financial Corporation Ltd	1993-94, 1994-95, and 1995-96	Internal Audit has been entrusted to a firm of Chartered Accountants. The accounts authenticated by the Internal Auditors differ from that adopted by the Board of Directors.
2	Bihar State Electronic Development Corporation Ltd	1991-92 and 1992-93	Internal control system needs to be strengthened keeping in view the size and nature of its business.
3	Bihar State Tourism Development Corporation Ltd	1991-92 and 1992-93	Internal control procedure of the company relating to purchase of stores and raw materials including components, linen, crockery, equipment and other similar assets are inadequate.
4	Bihar State Food & Civil Supplies Corporation Ltd	1981-82 and 1982-83	The internal control procedures relating to purchase of stores, raw material and other assets are deficient.
5	Bihar State Mineral Development Corporation Ltd	1999-2000	The internal audit system of the company is not commensurate with the size and nature of its business and the same is required to be strengthened by laying down specific guidelines to be followed by the internal auditor.
6	Bihar State Backward Classes Finance And Development Corporation Ltd	1994-95	The internal audit system of the company is not commensurate with the size and nature of its business.
7	Bihar Rajya Beej Nigam	1993-94	Although an internal Audit wing is in existence in the company, it has never been in operation. The persons appointed in this department has been entrusted with other jobs. Work relating to internal audit had been assigned to a firm of Chartered Accountants after expiry of several years. Such type of exercise does not serve the purpose of internal audit.

ANNEXURE - 9

(Referred to in paragraph No. 1.30)

Statement showing paid-up capital, investment and summarised working results of 619 (B) companies as per their latest finalised accounts*

(Figures in columns 5 to 19 are in rupees in lakh)

Sl. No.	Name of company	Status (working/n on-working)	Year of account	Paid-up capital	Equity by			Loans by			Grants by			Total investment by way of equity, loans and grants			Profit(+)/loss(-)	Accumulated profit(+)/accu-mulated loss (-)
					State Govt.	State Govt. companies	Central govt. and their companies	State Govt.	State Govt. companies	Central govt. and their companies	State Govt.	State Govt. companies	Central govt. and their companies	State Govt.	State Govt. companies	Central govt. and their companies		
1	2	3	4	5	6	7	8	9	10	11	12	13	14	15	16	17	18	19
1	Bihar Air products Ltd.	Working	1997-98	79.99	-	79.99	-	-	19.70	85.85	-	-	-	-	79.99	105.55	15.53	(-) 29.81
2	SCADA Agro Business Co. Ltd.	Working	1996-97	0.05	-	0.05	-	-	237.07	-	-	-	-	-	237.12	-	(-) 49.69	(-) 107.35
3	SCADA Agro Business Co. Khagaul Ltd.	Non-working	Accounts not finalised since inception	-	-	-	-	-	-	-	-	-	-	-	-	-	-	-
4	SCADA Agro Business Ltd. Dehri	-do-	Accounts not finalised since inception	-	-	-	-	-	-	-	-	-	-	-	-	-	-	-
5	SCADA Agro Business Ltd. Arrah	-do-	Accounts not finalised since inception	-	-	-	-	-	-	-	-	-	-	-	-	-	-	-
6	SCADA Agro Business Ltd Aurangabad	-do-	Accounts not finalised since inception	-	-	-	-	-	-	-	-	-	-	-	-	-	-	-

Sl. No.	Name of company	Status (working/n on-working)	Year of account	Paid-up capital	Equity by			Loans by			Grants by			Total investment by way of equity, loans and grants			Profit(+)/loss(-)	Accumulated profit(+)/accu-mulated loss (-)
					State Govt.	State Govt. companies	Central govt. and their companies	State Govt.	State Govt. companies	Central govt. and their companies	State Govt.	State Govt. companies	Central govt. and their companies	State Govt.	State Govt. companies	Central govt. and their companies		
7	SCADA Agro Business Ltd Mohaniyan	-do-	Accounts not finalised since inception	-	-													
8	SCADA Agro Forestry Co. khagaul	-do-	Accounts not finalised since inception	-	-													

* Companies at serial nos 3 to 8 have filed petition for winding up in the Patna High Court.

ANNEXURE - 10

(Referred to in paragraph – 2.1)

Statement showing details of hotels and restaurants (self-managed and leased out) of Bihar State Tourism Development Corporation Limited

Bihar

Self Managed Hotels: (i) Kautilya Vihar, Patna (ii) Gautam Vihar, Rajgir (iii) Ajatshatru Vihar, Rajgir (iv) Tathagat Vihar, Rajgir (v) Siddhartha Vihar, Bodh Gaya (vi) Budh Vihar, Bodh Gaya (vii) Sujata Vihar, Bodh Gaya (viii) Lichchavi Vihar, Muzaffarpur (ix) Vishwamitra Vihar, Buxar (x) Kaimur Vihar, Mohania (xi) Koshi Vihar, Saharsa (xii) Balmiki Vihar, Balmiki Nagar.

Leased out Hotels (i) Shershah Vihar, Sasaram (ii) Tourist Rest House, Vaishali (iii) Youth hostel, Vaishali (iv) Tourist Complex, Vaishali (v) Hotel Karn Vihar, Munger (vi) Hotel Janki Vihar, Sitamarhi (vii) Tourist Complex, Purnea (viii) Tourist Complex, Singheshwarsthan.

Self Managed Restaurants at (i) Gautam Vihar, Rajgir (ii) Tathagat Vihar, Rajgir. (iii) Vishwamitra Vihar, Buxar (iv) Kaimur Vihar, Mohania (v) Canteen, Rest House Vaishali (vi) Valmiki Vihar, Balmiki Nagar (vii) Lichchavi Vihar, Muzaffarpur (viii) Koshi Vihar, Saharsa (ix) Ropeway, Rajgir

Leased Out Restaurants at (i) Kautilya Vihar, Patna (ii) Cafeteria, Museum, Patna (iii) Cafeteria, Maner (iv) Ajatshatru Vihar, Rajgir (v) Cafeteria, Nalanda (vi) Sidhartha Vihar, Bodh Gaya (vii) Shershah Vihar, Sasaram (viii) Canteen Youth Hostel, Vaishali (ix) Tourist Complex, Vaishali (x) Tourist complex, Purnea (xi) Tourist complex, Singheshwarsthan (xii) Karn Vihar, Munger.

Jharkhand

Self Managed Hotels: (i) Aranya Vihar, Hazaribagh (ii) Tourist Complex, Urwan (iii) Natraj Vihar, Deoghar (iv) Baidyanath Vihar, Deoghar (v) Van Vihar, Betla (vi) Tourist Complex, Betla (vii) Birsa Vihar, Ranchi (viii) Ratan Vihar, Dhanbad (ix) Prabhat Vihar, Netarhat (x) Tourist Complexes (1 & 2), Netarhat (xi) Cottage, Prabhat Vihar, Netarhat.

Leased out Hotels (i) Sheetal Vihar, Barhi (ii) Basuki Vihar, Basukinath (iii) Tirth Yatri Kendra, Madhuban.

Self Managed Restaurants at (i) Aranya Vihar, Hazaribagh (ii) Tourist Complex, Urwan (iii) Van Vihar, Betla (iv) Prabhat Vihar, Netarhat

Leased Out restaurants at (i) Sheetal Vihar, Barhi (ii) Natraj Vihar, Deoghar (iii) Basuki Vihar, Basukinath (iv) Birsa Vihar, Ranchi (v) Ratan Vihar, Dhanbad.

ANNEXURE - 11
(Referred to in paragraph 2.5.1)
Financial position of BSTDC Ltd.

(Rupees in lakh)

Particulars	1999-2000	2000-01	2001-02	2002-03	2003-04
Share Capital	105.04	105.04	105.04	105.04	N.A
Share Money Deposit	193.96	394.96	394.96	394.96	N.A
Reserves & Surplus	175.85	179.47	185.34	188.67	N.A
Trade dues, current liabilities & provisions	916.29	644.04	742.15	819.71	N.A
Total	1391.14	1323.51	1427.49	1508.38	N.A
Fixed Assets	559.73	611.41	640.98	668.50	N.A
Less: Depreciation	334.62	383.22	432.65	465.66	N.A
Net Fixed Assets	225.11	228.19	208.33	202.84	N.A
Investments	240.73	240.73	240.73	35.73	N.A
Current Assets, Loans & Advances	910.04	841.81	968.14	1262.00	N.A
Misc. Expenditure	15.26	12.78	10.29	7.81	N.A
Total	1391.14	1323.51	1427.49	1508.38	N.A
Capital Employed*	218.86	425.96	434.32	645.13	N.A
Net worth [♥]	459.59	666.69	675.05	680.86	N.A

* Capital employed represents net fixed assets (including capital work-in-progress) plus working capital (Current assets less current liabilities).

♥ Net worth represents paid-up capital plus reserves and surplus less intangible assets.

ANNEXURE - 12

(Referred to in paragraph 2.8.1)

Operational Profit (+)/Loss (-) of Restaurants of BSTDC Ltd. for the four years upto 2002-03

(Rupees in lakh)

Sl. No.		1999-2000	2000-01	2001-02	2002-03
A. Restaurants in Bihar					
1.	Lichchavi Vihar Muzaffarpur	(+) 0.16	(+) 0.21	(+) 0.06	(+) 0.13
2.	Sidhartha Vihar, BodhGaya	(+) 1.69	(+) 1.14	(+) 2.47	(+) 1.03
3.	Shershah Vihar, Sasaram	(+) 0.24	(+) 0.23	--	--
4.	Gautam Vihar, Rajgir.	(+) 0.50	(+) 1.63	(+) 1.37	(+) 0.93
5.	Cafeteria, Maner, Patna	(-) 0.60	--	--	--
6.	Kaimur Vihar, Mohania	(+) 0.95	(+) 1.62	(+) 1.88	(+) 2.53
7.	Cafeteria, Nalanda.	(+) 0.03	--	--	--
8.	Vishwamitra Vihar, Buxur.	(+) 0.47	(+) 0.12	(+) 0.30	(+) 0.56
9.	Tathagat Vihar, Rajgir	--	--	(+) 1.47	(+) 1.96
Total		(+) 3.44	(+) 4.95	(+) 7.55	(+) 7.14
B. Restaurants in Jharkhand					
1.	Van Vihar. Betla	(+) 1.11	(+) 1.45	(+) 1.11	(+) 0.72
2.	Natraj Vihar, Deoghar	(+) 0.02	--	--	--
3.	Prabhat Vihar, Netarhat	(+) 0.67	(+) 0.63	(+) 0.37	(+) 0.10
4.	Restaurant, Urwan.	(+) 1.50	(+) 4.62	(+) 0.35	(+) 2.35
5.	Canteen Sheetal, Barhi	(+) 0.10	(+) 0.02	--	--
6.	Aranya Vihar, Hazaribagh	(+) 0.11	--	--	--
Total		(+) 3.51	(+) 6.72	(+) 1.83	(+) 3.17

-- Represents either non-existent or leased out.

ANNEXURE - 13**(Referred to in paragraph 3.1.20)****Comparative rate of materials**

Material (Unit)	Rate as per cost data 2002-03	Latest rate (3/04) in Board	Rate claimed by PGCIL	Difference	Quantity	Amount (Rupees in lakh)
	(in Rupees)					
Rabbit conductor (KM)	20,590	19,755	21,620	1865	140 X 3	7.83
Weasel conductor (KM)	11,337	11,808	11,904	096	1584 X 3	4.56
Squirrel conductor (KM)	8,366	7,921	8,753	832	565 X 3	14.10
MS channel and other accessories (MT)	28,000	24,262	42,000	17,738	788	139.78
PSC Pole (No.)	1065	1125	1295	170	35,742	60.76
Total						227.03

i.e. Rs 2.27 crore.

ANNEXURE - 14
(Referred to in paragraph No. 3.2.5)
Sources of finance and utilisation for the years 1999-2000 to
2003-04.

(Rupees in crore)					
	1999-00	2000-01	2001-02	2002-03	2003-04*
A. Resources					
(i) Refinance (IDBI / SIDBI)	(Nil)	(Nil)	(Nil)	(Nil)	(Nil)
(ii) Bonds	(Nil)	(Nil)	(Nil)	(Nil)	(Nil)
(iii) Share capital	(Nil)	(Nil)	(Nil)	(Nil)	(Nil)
(iv) Borrowing (Government)	(Nil)	22.83 (32.56)	(Nil)	28.42 (39.71)	27.49 (42.91)
(v) Plough back					
(a) Recovery of loan and interest	19.34 (44.55)	14.58 (20.79)	16.68 (30.09)	18.37 (25.67)	9.67 (15.10)
(b) Opening bank balance	23.30 (53.67)	31.65 (45.14)	36.81 (66.40)	22.19 (31.01)	26.26 (40.99)
(c) Others*	0.77 (1.77)	1.06 (1.51)	1.95 (3.51)	2.58 (3.61)	0.64 (1.00)
Total	43.41	70.12	55.44	71.56	64.06
B. Disbursement					
(i) Loan	1.88 (4.33)	1.06 (1.51)	0.04 (0.07)	0.02 (0.03)	(Nil)
(ii) Subsidy	0.70 (1.61)	0.12 (0.17)	0.14 (0.25)	0.01 (0.01)	(Nil)
(iii) Repayment of bonds including interest	(Nil)	22.83 (32.56)	22.48 (40.55)	36.39 (50.85)	12.11 (18.90)
(iv) Repayment of borrowings including interest	(Nil)	(Nil)	0.10 (0.18)	1.00 (1.40)	10.01 (15.64)
(v) Closing cash balance	31.65 (72.91)	36.81 (52.50)	22.19 (40.03)	26.26 (36.70)	15.99 (24.96)
(vi) Others**	9.18 (21.15)	9.30 (13.26)	10.49 (18.92)	7.88 (11.01)	25.95 (40.50)
Total	43.41	70.12	55.44	71.56	64.06

Note: Figures in () representing percentage to total income.

* Provisional Figures.

* Other sources of finance include income from processing fee, inspection fee, legal & other charges received, commitment charges, upfront fee, rent, dividend, incidental & service charges, etc.

** Other utilisation includes salaries & benefits to employees, administrative expenses, management expenses on bonds, bank charges & commission, advertisement & publicity charges, staff training expenses, news papers & magazine, library & books, expenditure on purchases of fixed assets & fixtures, etc.

ANNEXURE - 15
(Referred to in paragraph No. 3.2.8)
Recovery position.

(Rupees in crore)

Particulars	1999-00	2000-01	2001-02	2002-03	2003-04
1. Amount due at the beginning of the year					
(i) Principal	263.82	263.34	263.74	265.61	265.91
(ii) Interest and other charges	983.19	1,166.43	1,362.76	1,557.61	1,829.70
Total	1,247.01	1,429.77	1,626.50	1,823.22	2,095.61
2. Current demand					
(i) Principal	7.67	4.63	8.74	8.83	3.13
(ii) Interest and other charges	192.03	203.66	204.52	280.40	297.29
Total	199.70	208.29	213.26	289.23	300.42
3. Total recoverable during the year (1+2)					
(i) Principal	271.49	267.97	272.48	274.44	269.04
(ii) Interest and other charges	1,175.22	1,370.09	1,567.28	1,838.01	2,126.99
Total	1,446.71	1,638.06	1,839.76	2,112.45	2,396.03
4. Recovery out of old dues					
(i) Principal	4.32	3.79	2.94	4.07	2.29
(ii) Interest and other charges	3.55	5.03	8.07	5.91	4.00
Total	7.87	8.82	11.01	9.98	6.29
5. Recovery out of current demand					
(i) Principal	3.83	0.44	3.93	4.46	2.45
(ii) Interest and other charges	5.24	2.30	1.60	2.40	0.93
Total	9.07	2.74	5.53	6.86	3.38
6. Total recovery during the year (4+5)					
(i) Principal	8.15	4.23	6.87	8.53	4.74

(ii) Interest and other charges	8.79	7.33	9.67	8.31	4.93
Total	16.94	11.56	16.54	16.84	9.67
7. Amount due at the end of the year (3-6)					
(i) Principal	263.34	263.74	265.61	265.91	264.30
(ii) Interest and other charges	1,166.43	1,362.76	1,557.61	1,829.70	2,122.06
Total	1,429.77	1,626.50	1,823.22	2,095.61	2,386.36
8. Percentage of recovery against old due to amount due at the beginning of the year (4 to 1)					
(i) Principal	1.64	1.44	1.11	1.53	0.86
(ii) Interest and other charges	0.36	0.43	0.59	0.38	0.22
Total	0.63	0.62	0.68	0.55	0.30
9. Percentage of recovery of current demand to current demand (5 to 2)					
(i) Principal	49.93	9.50	44.97	50.51	78.27
(ii) Interest and other charges	2.73	1.13	0.78	0.86	0.31
Total	4.54	1.32	2.59	2.37	1.13
10. Percentage of total recovery to total demand (6 to 3)					
(i) Principal	3.00	1.58	2.52	3.11	1.76
(ii) Interest and other charges	0.75	0.54	0.62	0.45	0.23
Total	1.17	0.71	0.90	0.80	0.40
Target for recovery	-	-	406.63*	455.81**	-
Achievement	-	-	16.54	16.84	-
Percentage of Achievement to target	-	-	4.07	3.69	-

* 25% of 1626.50

** 25% of 1823.22

ANNEXURE - 16

(Referred to in paragraph No. 3.2.14)

(A) Details of eligible units whose cases were not finalised under OTS Scheme

(Rupees in

lakh)

Sl. No.	Name of units	BOS at the time of OTS applied			OTS Amount	BOS as on 31.3.2003		
		Pr.	Intt.	Total		Pr.	Intt.	Total
1	2	3	4	5	6	7	8	9
1	Karyanand Kumar (P) Ltd., Purnea	2.21	3.05	5.26	4.47	2.29	17.54	19.83
2	Nityanand Kumar (Pr. Loan), Purnea	2.21	3.16	5.37	4.56	2.21	18.41	20.62
3	Mahabir Udyog, Purnea	3.35	13.38	16.73	13.7	3.35	35.16	38.51
4	Kailash Rope & Ban Industries, Purnea	1.09	5.00	6.09	3.75	1.09	11.01	12.10
5	Chhaya Store Works, Sahibganj	1.68	4.26	5.94	4.91	1.68	5.40	7.08
6	Star Industries, Jamshedpur	1.65	8.60	10.25	9.66	Dues liquidated in July 2000		
7	Indian Paints, Jamshedpur	0.38	7.96	8.34	4.21	Dues liquidated in July 2000		
	Total	12.57	45.41	57.98	45.26	10.62	87.52	98.14

(B) Details of units whose O.T.S cases were finalised by the corporation after closure of the scheme (i.e. after September 1997)

Sl. No.	Name of units	BOS			Date of finalisation of OTS	OTS Amt.	Relief granted
		Pr.	Intt.	Total			
1	2	3	4	5	6	7	8
1	M/S Hassan Auto Elec. Works, Saharsa	-	0.10	0.10	24.11.97	0.07	0.03
2	Nalanda Aluminium Works, Nalanda	2.85	14.75	17.60	28.3.98	12.00	5.60
3	Prabhat Udyog, Bokaro	5.00	20.30	25.30	30.7.98	11.43	13.87
4	R.S.Shukla & Sons, Munger	0.59	2.22	2.81	25.11.97	2.17	0.64
5	Sudhir Fabricators, Ranchi	2.44	7.38	9.82	26.3.98	8.57	1.25
6	Kamlesh Engg. Works, Arrah	1.81	5.98	7.79	22.7.98	5.52	2.27
7	Narayan Mfg. Co., Bhagalpur	0.20	1.78	1.98	27.5.99	0.99	0.99
8	Puja Stone Chips, Udyog, Rohtas	2.26	3.88	6.14	1.7.99	5.34	0.80
		15.15	56.39	71.54		46.09	25.45

ANNEXURE - 17
(Referred to in paragraph No. 3.2.15)

Details of units sold below the principal outstanding

(Rupees in

lakh)

Sl.No.	Name of units sold	Principal outstanding	Interest & other charges outstanding	Total outstanding	Sale price	Unrealised (loss)	
						Prin.	Intt. & other charges
1	2	3	4	5	6	7	8
1	M/S Hindustan Mosaic Tiles, Fatuha	8.13	61.32	69.45	5.75	2.38	61.32
2	M/S SwastiK Industries	2.92	36.36	39.28	0.75	2.17	36.36
3	M/S Bihar Metal Works	1.31	11.15	12.46	1.14	0.17	11.15
4	Jamshedpur Foam Industries (P) Ltd.	16.92	22.51	39.43	16.00	0.92	22.51
5	TM Founding & Engg.	21.08	69.96	91.04	17.00	4.08	69.96
6	S.K. Bhattacharya &Co.	2.21	3.81	6.02	2.00	0.21	3.81
7	C.K. Electroplanting	3.93	12.63	16.56	3.47	0.46	12.63
8	M/S Modern Steel Industries	3.78	14.22	18.00	2.75	1.03	14.22
9	M/S Kasera Udyog	2.83	23.23	26.06	2.42	0.41	23.23
10	M/S Jai Gurudeo Transport	2.44	1.26	3.70	1.96	0.48	1.26
11	M/S Gopeshwar Textiles	2.98	8.55	11.53	2.55	0.43	8.55
12	M/S Hari Shanker	3.34	6.70	10.04	2.70	0.64	6.70
13	M/S Rameshwar Singh	2.55	0.35	2.90	1.25	1.30	0.35
14	M/S Veena constructions	4.12	19.23	23.35	4.10	0.02	19.23
15	M/S Sheojee Singh	1.75	4.25	6.00	0.75	1.00	4.25
16	M/S Kashinath Singh	1.83	5.59	7.42	0.60	1.23	5.59
17	M/S Bharat Manufacturers & Printers	9.02	52.14	61.16	5.00	4.02	52.14
18	M/S Ganga Prasad (Transport)	1.15	2.83	3.98	0.36	0.79	2.83
19	M/S Raj Narain Prasad	4.03	19.33	23.36	2.55	1.48	19.33
20	M/S Awadhesh Kumar Singh	1.25	3.57	4.82	0.33	0.92	3.57
	Total	97.57	378.99	476.56	73.43	24.14	378.99

ANNEXURE - 18
(Referred to in paragraph No. 3.2.15)
Details of units sold below BLVT¹/CVT² value

(Rupees in lakh)

Sl.No.	Name of units sold	Market/Assessed value of Assets	Sale price	Loss	BOS	Total loss
1	2	3	4	5 (3-4)	6	7 (6-4)
1	M/S Swastik Industry	5.23	0.75	4.48	47.53	46.78
2	M/S Hindustan Mosaic Tiles	10.16	5.75	4.41	79.15	73.40
3	Hotel Anjula , Deoghar	37.82	30.00	7.82	58.17	28.17
4	Dinesh Surgical (p) Ltd.	9.50	7.39	2.11	181.07	173.68
5	Hotel Swayam Sidha (P) Ltd.	27.15	18.00	9.15	41.37	23.37
6	India Automotive Ltd.	60.98	50.00	10.98	176.04	126.04
7	Sharma & Co.	3.38	2.15	1.23	16.51	14.36
8	Universal Carbon JSR	7.72	5.40	2.32	9.16	3.76
9	National Tools, Ranchi	5.46	4.10	1.36	28.60	24.50
10	Nikhil Anoy's JSR	12.84	9.50	3.34	14.73	5.23
11	Osta Enterprises JSR	28.76	20.00	8.76	35.00	15.00
12	Hotel Shakuntala	9.38	8.25	1.13	14.42	6.17
13	Pact Print Industries	5.85	4.95	0.90	27.38	22.43
14	Oxichem industry	13.67	9.27	4.40	10.17	0.90
15	Delta Engg.	5.99	5.30	0.69	10.69	5.39
16	Patliputra Industry	1.64	1.32	0.32	12.41	11.09
17	Tulsi Metal Industry	5.42	4.00	1.42	34.47	30.47
18	Poles & Pillars	16.44	12.75	3.69	34.06	21.31
19	Jayshree Engg. Works	4.32	3.50	0.82	5.27	1.77
20	Shanti Enterprises Appliances	2.87	2.36	0.51	4.39	2.03
21	Natraj Zarda factory	10.36	10.40	(-) 0.04	21.73	11.33
	Total	284.94	215.14	69.80	862.32	647.18

¹ Branch level valuation team.

² Corporation level valuation team.

ANNEXURE - 19

(Referred to in paragraph No. 3.2.17)

Illustrative list of units to whom notices were issued under Section 29 & 30 of SFC Act, 1951 and against whom no effective recovery action has since been taken

(Rupees in lakh)

Sl. No.	Name of unit – M/S	Date of issue of SFC notice	BOS at the time of issue of notice			BOS as on 31.03.03		
			Principal	Interest	Total	Principal	Interest	Total
1	Bihar Cotton Mills	24.03.82	23.73	2.03	25.76	23.73	511.34	535.07
2	Bam Bam Kutir Udyog	17.08.94	8.29	11.75	20.04	8.29	48.59	56.88
3	Naman Garments	12.02.93	2.72	0.74	3.46	2.72	12.32	15.04
4	Sunil Type Foundary	02.05.91	3.10	1.00	4.10	3.10	23.96	27.06
5	Bhola Nath Industries	12.02.93	3.26	7.15	10.41	5.12	28.36	33.48
6	Bhardwar Engg. Works	30.11.94	1.61	0.89	2.50	1.61	7.67	9.28
7	Bharat Chemicals & Allied Ltd.	11.2.84	1.24	0.90	2.14	1.24	31.92	33.16
8	Deepali Electricals	4.10.85	1.35	1.29	2.64	1.46	31.58	33.04
9	Printers India	1.10.85	11.28	5.38	16.66	11.23	158.13	169.36
10	Bio Tech Lab	29.9.94	3.48	2.13	5.61	3.48	11.25	14.73
11	Anil Plywood	22.11.85	1.55	1.07	2.62	2.63	47.14	49.77
12	Tisco Bulb Industries	22.11.83	1.10	0.98	2.08	1.10	32.01	33.11
13	Bihar Kalin Udyog	25.1.93	2.57	2.38	4.95	2.57	18.89	21.46
14	Manish Industries	12.11.90	11.36	5.39	16.75	11.36	93.82	105.18
15	Sona Oil Mill	17.10.92	4.94	1.41	6.35	4.94	22.84	27.78
16	Mukti Garments	15.02.93	2.70	0.68	3.38	2.70	12.45	15.15
17	Nu tech printers (hotel)	-	3.96	1.64	5.60	3.96	13.88	17.84
18	Durga Polypack of India	10.6.93	18.85	14.65	33.50	18.85	117.04	135.89
	Total		107.09	61.46	168.55	110.09	1223.19	1333.28

ANNEXURE - 20

(Referred to in paragraph No. 3.2.22)

Details of loan cases where removal/theft of hypothecated/mortgaged assets noticed

(Rupees in

lakh)

Sl. No.	Name of units	Value of assets theft/removed	FIR No. & date	Date of occurrence/ inspection	Value of existing assets	BOS as on 31.3.2003		
						Principal	Interest	Total
1	2	3	4	5	6	7	8	9
1	Devine Cycles (P) Ltd.	16.00	557(C)/1990	20.12.94	3.88	13.92	264.34	278.26
2	Pataliputra Bevarage(P) Ltd	45.14	243/94	29.9.94	20.12	38.49	203.76	242.25
3	Glimex chem. (P) Ltd.	25.75	51/97	26.12.96	26.63	30.13	150.21	180.34
4	Durga Poly Pack India	16.41	399/96	31.1.95	18.56	18.85	117.05	135.90
5	Allied Food Products	6.94	205/95	8.2.95	NIL	5.49	81.72	87.21
6	PremaThread Company	2.55	134/93	Dec. 92	NIL	2.68	14.03	16.71
7	Shanker Plywood Indus.	11.37	71/97	28.11.96	29.46	33.70	191.87	225.57
8	Shanker PVC Footwear	4.23	2/97	3.2.95	6.58	12.41	44.66	57.07
9	Kumar Screw	2.55	6/96	14.9.95	14.00	2.75	57.56	60.31
10	Singh & Sukla Plastic	2.25	146/94	16.6.87	NIL	2.20	37.84	40.04
11	Standard Off Set	2.66	1788 (C)/02	29.6.02	7.80	3.74	23.29	27.03
12	Bihar Cotton Mills Ltd	37.76	217/93	2.7.90	499.68	23.73	511.34	535.07
13	Bam Bam Kutir Udyog	5.30	95/95	2.3.95	2.00	3.94	24.49	28.43
14	Bio Tech Lab	4.58	48/95	29.9.94	Nil	3.48	11.25	14.73
15	Maurya Electricals	6.90	134/95	-	Nil	4.55	27.32	31.87
	Total	190.39			628.71	200.06	1760.73	1960.69

ANNEXURE - 21

Referred to in paragraph No 4.4.4

Statement showing the arrear of annual accounts of government companies

Sl. No.		Name of Department	Year from which the accounts are in arrear as on 30 September 2004	No. of accounts in arrear
1.	Bihar State Small Industries Corporation Limited	Industries	1990-91	14
2.	Bihar State Pharmaceutical & Chemical Development Corporation Limited	-do-	1986-87	18
3.	Bihar State Handloom & Handicrafts Corporation Limited	-do-	1984-85	20
4.	Bihar Finished Leather Limited	-do-	1984-85	20
5.	Bihar State Industrial Development Corporation Limited	-do-	1987-88	17
6.	Bihar State Export Corporation Limited	-do-	1992-93	12
7.	Bihar State Film Development & Finance Corporation Limited	-do-	1992-93	12
8.	Bihar State Electronic Development Corporation Limited	-do-	1993-94	11
9.	Bihar State Cement Corporation Limited	-do-	1981-82	23
10.	Bihar Scooters Limited	-do-	1977-78	27
11.	Bihar State Leather Industries Development Corporation Limited	-do-	1982-83	22
12.	Bihar Insecticides Limited	-do-	1987-88	17
13.	Bihar State Textile Corporation Limited	-do-	1988-89	16
14.	Bihar Maize Product Limited	-do-	1984-85	20
15.	Bihar State Glazed Tiles & Ceramics Limited	-do-	1986-87	18
16.	Vishwamitra Paper Industries Limited	-do-	1985-86	19
17.	Bihar Drugs & Chemicals Limited	-do-	1986-87	18
18.	Jhanjharpur Paper Industries Limited	-do-	1986-87	18
19.	Bihar Paper Mills Limited	-do-	1986-87	18
20.	Synthetic Resins (Eastern)	-do-	1984-85	20

	Limited			
21.	Beltron Video System Limited	-do-	1988-89	16
22.	Beltron Mining System Limited	-do-	1990-91	14
23.	Bhawani Active Carbon Limited	-do-	1986-87	18
24.	Magadh Minerals Limited	-do-	1984-85	20
25.	Beltron Informatics Limited	-do-	Since 1.3.1988	17
26.	Bihar State Credit & Investment Corporation Limited	-do-	1998-99	06
27.	Kumardhubi Metal Casting & Engineering Limited	-do-	1995-96	09
28.	Bihar State Tannin Extract Limited	Forest & Environment	1989-90	15
29.	Bihar State Solvent & Chemicals Limited	-do-	1987-88	17
30.	Bihar State Forest Development Corporation Limited	-do-	1999-2000	05
31.	Bihar State Hydroelectric Power Corporation Limited	Energy	1995-96	09
32.	Tenughat Vidyut Nigam Limited	-do-	1994-95	10
33.	Bihar Rajya Matsya Vikas Nigam Limited	Animal Husbandry & Fisheries	1993-94	11
34.	Bihar State Dairy Corporation Limited	-do-	1992-93	12
35.	Bihar State Construction Corporation Limited	Water Resource Development	1986-87	18
36.	Bihar Hill Area Lift Irrigation Corporation Limited	-do-	1983-84	21
37.	Bihar State Sugar Corporation Limited	Sugarcane	1985-86	19
38.	Bihar State Food & Civil Supplies Corporation Limited	Food Supply & Commerce	1983-84	21
39.	Bihar Rajya Pul Nirman Nigam Limited	Road Construction	1992-93	12
40.	Bihar Police Building Construction Corporation Limited	Home	1989-90	15
41.	Bihar State Minorities Finance Corporation Limited	Minorities Welfare	1996-97	08

42.	Bihar State Mineral Development Corporation Limited	Mines & Geology	2000-01	04
43.	Bihar Panchayati Raj Finance Corporation Limited	Rural Development	1985-86	19
44.	Bihar State Tourism Development Corporation Limited	Tourism	1993-94	11
45.	Bihar State Water Development Corporation Limited	Minor Irrigation	1979-80	25
46.	Bihar State Text Book Publishing Corporation Limited	Human Resource Development	1995-96	09
47.	Bihar State Backward Classes Finance & Development Corporation	Welfare	1996-97	08
48.	Bihar Rajya Beej Nigam Limited	Agriculture	1994-95	10
49.	Bihar State Agro Industries Development Limited	-do-	1987-88	17
50.	Bihar Fruits & Vegetables Development Corporation Limited	-do-	1991-92	13
				769

ANNEXURE - 22

Referred to in paragraph No 4.4.4
Statement showing delay in finalisation of accounts

Sl. No.	Name of the Company	Year of accounts	Due date of holding of Annual General Meeting for adoption of accounts	Actual date of holding of Annual General Meeting	Delay in months
1.	Bihar State Mineral Development Corporation Limited	1995-96	30.09.1996	30.01. 1999	28
		1996-97	30.09.1997	07.08. 1999	22
		1997-98	30.09.1998	29.08.2003	59
		1998-99	30.09.1999	29.08. 2003	47
		1999-2000	30.09.2000	*	42
2.	Bihar State Food & Civil supplies Corporation Limited	1977-78	30.09.1978	15.09. 1990	144
		1978-79	30.09.1979	17.08. 1991	143
		1979-80	30.09.1980	31.01. 1994	160
		1980-81	30.09.1981	28.07. 2001	238
		1981-82	30.09.1982	23.08.2004	263
3.	Bihar State Tourism Development Corporation Limited	1988-89	30.09.1989	16.09. 2002	156
		1989-90	30.09.1990	17.01. 2003	148
		1990-91	30.09.1991	27.06. 2003	141
		1991-92	30.09.1992	28.01. 2004	136
		1992-93	30.09.1993	28.06.2004	129
4.	Bihar State Hydroelectric power Corporation Limited	1990-91	30.09.1991	16.12. 1995	51
		1991-92	30.09.1992	27.03. 1997	54
		1992-93	30.09.1993	02.06. 1998	56
		1993-94	30.09.1994	30.08. 1999	59
		1994-95	30.09.1995	28.09.2004	108
5.	Bihar State Credit & Corporation Limited.	1993-94	30.09.1994	29.02.1996	17
		1994-95	30.09.1995	23.06.1997	21
		1995-96	30.09.1996	07.01.1999	27
		1996-97	30.09.1997	15.01.2003	64
		1997-98	30.09.1998	02.04.2004	66
6.	Bihar Hill Area Lift Irrigation Corporation Limited	1978-79	30.09.1979	N.A.	--
		1979-80	30.09.1980	06.01. 1990	111
		1980-81	30.09.1981	05.06. 1991	116
		1981-82	30.09.1982	03.11. 1992	121
		1982-83	30.09.1983	N.A.	--
7.	Bihar State Agro Industries Development Corporation Limited	1982-83	30.09.1983	29.02. 1992	101
		1983-84	30.09.1984	30.09. 1992	96
		1984-85	30.09.1985	21.04. 1994	103
		1985-86	30.09.1986	07.07. 1995	105
		1986-87	30.09.1987	*	198
8.	Bihar State Small Industries Corporation Limited	1985-86	30.09.1986	22.10.1992	73
		1986-87	30.09.1987	29.09.1994	84
		1987-88	30.09.1988	03.09.1996	95
		1988-89	30.09.1989	01.04.2003	162
		1989-90	30.09.1990	*	162
9.	Bihar State Industrial Development	1982-83	30.09.1983	11.08. 1992	106
		1983-84	30.09.1984	28.04. 1994	115
		1984-85	30.09.1985	20.03. 1996	126

Audit Report (Commercial) for the year ended 31 March 2004

	Corporation Limited	1985-86 1986-87	30.9.1986 30.09.1987	04.01. 1997 *	123 198
10.	Bihar State Leather Industries Development Corporation Limited	1977-78 1978-79 1979-80 1980-81 1981-82	30.09.1978 30.09.1979 30.09.1980 30.09.1981 30.09.1982	23.12. 1985 11.02. 1991 22.07. 1992 29.09. 1995 18.05.2004	87 136 142 168 260
11.	Bihar State Construction Corporation Limited	1981-82** 1982-83 1983-84 1984-85 1985-86	31.12. 1982 31.12. 1983 31.12. 1984 31.12. 1985 31.12. 1986	17.07. 1997 07.04. 1998 18.05. 1999 20.07.2000 *	175 171 173 175 207
12.	Bihar State Pharmaceutical & Chemical Development Corporation Limited	1981-82 1982-83 1983-84 1984-85 1985-86	30.09.1982 30.09.1983 30.09.1984 30.09.1985 30.09.1986	15.09. 1983 17.05. 1984 05.09. 1988 24.09. 1991 03.05. 1995	12 08 47 72 103

* Not held as yet. Where AGM has not been held, delay in months has been calculated upto 31 March 2004.

** Financial year ending June i.e. July to June.

ANNEXURE - 23

Referred to in paragraph No 4.4.6

Statement showing time taken by Statutory Auditors in certification of accounts between two successive years

Sl. No.	Name of the Company	Year of accounts	Time taken (in months)	Average Time taken (in months)
Working Government companies				
1.	Bihar State Mineral Development Corporation Limited	1995-96 1996-97 1997-98 1998-99 1999-2000	08 12 05 24 30	15.80
2.	Bihar State Food & Civil Supplies Corporation Limited	1977-78 1978-79 1979-80 1980-81 1981-82	N.A. 12 31 10 113	41.50
3.	Bihar State Tourism Development Corporation Limited	1988-89 1989-90 1990-91 1991-92 1992-93	24 21 04 04 10	12.60
4.	Bihar State Hydro electric Power Corporation Limited	1990-91 1991-92 1992-93 1993-94 1994-95	14 12 01 24 10	12.20
5.	Bihar State Credit and Investment Corporation Limited	1993-94 1994-95 1995-96 1996-97 1997-98	17 18 03 48 27	22.60
Non-working Government companies				
6.	Bihar Hill Area lift irrigation Corporation. Limited	1978-79 1979-80 1980-81 1981-82 1982-83	N.A. 41 12 29 14	24.00
7.	Bihar State Agro Industries Development Corporation Limited	1982-83 1983-84 1984-85 1985-86 1986-87	N.A. N.A. 08 14 22	14.66
8.	Bihar State Small Industries Corporation Limited	1985-86 1986-87 1987-88	06 10 37	27.80

		1988-89 1989-90	06 80	
9.	Bihar State Industrial Development Corporation Limited	1982-83 1983-84 1984-85 1985-86 1986-87	N.A. 19 14 22 47	25.50
10.	Bihar State Leather Industries Development Corporation Limited	1977-78 1978-79 1979-80 1980-81 1981-82	N.A. 15 60 27 33	33.75
11.	Bihar State Construction Corporation Limited	1981-82 1982-83 1983-84 1984-85 1985-86	27 64 09 17 32	29.80
12.	Bihar State Pharmaceutical & Chemical Development Corporation Limited	1981-82 1982-83 1983-84 1984-85 1985-86	5 6 45 26 29	22.20

ANNEXURE - 24

Referred to in paragraph No 4.4.7

Statement showing the delay in holding the Annual General Meeting

Sl. No	Name of the company	Year	Date of issue of comments/ non-review certificate	Date of holding AGM	Number of days taken to hold AGM
1.	Bihar State Mineral Development Corporation Limited	1995-96	02.09.1998	30.01.1999	120
		1996-97	16.07.1999	07.08.1999	◆
		1997-98	21.02.2000	29.08.2003	1255
		1998-99	11.07.2002	29.08.2003	384
		1999-2000	02.08.2002	*	--
2.	Bihar State Food and Civil Supplies Corporation Limited	1977-78	06.04.1990	15.09.1990	132
		1978-79	03.05.1991	17.08.1991	76
		1979-80	09.12.1993	31.01.1994	23
		1980-81	28.12.1994	28.07.2001	2374
		1981-82	11.02.2004	23.08.2004	164
3.	Bihar State Tourism Development Corporation Limited	1988-89	21.08.2002	16.09.2002	◆
		1989-90	08.01.2003	17.01.2003	◆
		1990-91	18.06.2003	27.06.2003	◆
		1991-92	07.01.2004	28.01.2004	◆
		1992-93	25.06.2004	28.06.2004	◆
4.	Bihar State Hydroelectric Power Corporation Limited	1990-91	15.09.1995	16.12.1995	62
		1991-92	27.12.1996	27.03.1997	60
		1992-93	02.03.1998	02.06.1998	62
		1993-94	10.12.1998	30.08.1999	233
		1994-95	20.08.2004	28.09.2004	09
5.	Bihar State Credit and Investment Corporation Limited	1993-94	06.01.1996	29.02.1996	24
		1994-95	29.04.1997	23.06.1997	25
		1995-96	09.10.1998	07.01.1999	60
		1996-97	16.12.2002	15.01.2003	◆
		1997-98	12.01.2004	02.04.2004	51
6.	Bihar Hill Area Lift Irrigation Corporation. Limited	1978-79	25.09.1986	N.A.	--
		1979-80	31.07.1989	06.01.1990	129
		1980-81	22.03.1991	05.06.1991	14
		1981-82	22.07.1992	03.11.1992	74
		1982-83	11.11.1993	N.A.	--
7.	Bihar State Agro Industries Development Corporation Limited	1982-83	N.A.	29.02.1992	--
		1983-84	14.08.1992	30.09.1992	17
		1984-85	25.05.1993	21.04.1994	301
		1985-86	07.06.1994	07.07.1995	365
		1986-87	21.05.1996	*	--
8.	Bihar State Small Industries Corporation Limited	1985-86	04.06.1992	22.10.1992	110
		1986-87	24.03.1993	29.09.1994	524
		1987-88	17.06.1996	03.09.1996	48
		1988-89	19.12.2002	01.04.2003	73
		1989-90	09.01.2004	*	---
9.	Bihar State Industrial Development Corporation Limited	1982-83	31.03.1992	11.08.1992	103
		1983-84	20.10.1993	28.04.1994	160
		1984-85	27.04.1995	20.03.1996	298

		1985-86	31.10.1996	04.01.1997	35
		1986-87	19.12.2002	*	---
10.	Bihar State Leather Industries Development Corporation Limited	1977-78	N.A	23.12.1985	
		1978-79	10.05.1989	11.02.1991	612
		1979-80	16.06.1992	22.07.1992	06
		1980-81	09.09.1994	29.09.1995	355
		1981-82	21.05.1997	18.05.2004	2523
11.	Bihar State Construction Corporation Limited	1981-82	19.08.1992	17.07.1997	1763
		1982-83	18.03.1998	07.04.1998	◆
		1983-84	15.09.1998	18.05.1999	215
		1984-85	24.03.2000	20.07.2000	88
		1985-86	18.06.2003	N.A.	--
12.	Bihar State Pharmaceutical & chemical Development Corporation Limited	1981-82	N.A.	15.09.1983	--
		1982-83	N.A.	17.05.1984	--
		1983-84	30.06.1988	05.09.1988	37
		1984-85	27.05.1991	24.09.1991	90
		1985-86	02.02.1993	03.05.1995	790

*Not held as yet.

◆ Held within 30 days.

ANNEXURE - 25

Referred to in paragraph No 4.4.8

Statement showing the delay in tabling of annual report in the Legislature

Sl. No.	Name of the company	Year of annual report	Due date of tabling of annual report	Actual date of tabling of annual report	Delay in months [▲]
1.	Bihar State Mineral Development Corporation Limited	1995-96	31.12.1996	03.08.1999	31
		1996-97	31.12.1997	08.06.2004	77
		1997-98	31.12.1998	Yet to be placed	63
		1998-99	31.12.1999	-Do-	51
		1999-2000	31.12.2000	-Do-	39
2.	Bihar State Food & Civil supplies Corporation Limited	1977-78	31.12.1978	Yet to be placed	303
		1978-79	31.12.1979	-Do-	291
		1979-80	31.12.1980	-Do-	279
		1980-81	31.12.1981	-Do-	267
		1981-82	31.12.1982	-Do-	255
3.	Bihar State Tourism Development Corporation Limited	1988-89	31.12.1989	12.03.2003	158
		1989-90	31.12.1990	02.07.2003	150
		1990-91	31.12.1991	15.06.2004	150
		1991-92	31.12.1992	15.06.2004	138
		1992-93	31.12.1993	Yet to be placed	123
4.	Bihar State Hydroelectric power Corporation Limited	1990-91	31.12.1991	N.A.	--
		1991-92	31.12.1992	N.A.	--
		1992-93	31.12.1993	N.A.	--
		1993-94	31.12.1994	N.A.	--
		1994-95	31.12.1995	N.A.	--
5.	Bihar State Credit & Investment Corporation Limited.	1993-94	31.12.1994	N.A.	--
		1994-95	31.12.1995	N.A.	--
		1995-96	31.12.1996	Yet to be placed	87
		1996-97	31.12.1997	-Do-	75
		1997-98	31.12.1998	-Do-	63
6.	Bihar Hill Area Lift Irrigation Corporation Limited	1978-79	31.12.1979	N.A.	--
		1979-80	31.12.1980	N.A.	--
		1980-81	31.12.1981	N.A.	--
		1981-82	31.12.1982	N.A.	--
		1982-83	31.12.1983	N.A.	--

▲ Where annual reports are yet to be placed in the Legislature, delay in months has been calculated upto 31 March 2004.

7.	Bihar State Agro Industries Development Corporation Limited	1982-83 1983-84 1984-85 1985-86 1986-87	31.12.1983 31.12.1984 31.12.1985 31.12.1986 31.12.1987	N.A. Yet to be placed -Do- -Do- -Do-	-- 231 219 207 195
8.	Bihar State Small Industries Corporation Limited	1985-86 1986-87 1987-88 1988-89 1989-90	31.12.1986 31.12.1987 31.12.1988 31.12.1989 31.12.1990	N.A. Yet to be placed -Do- -Do- -Do-	-- 195 183 171 159
9.	Bihar State Industrial Development Corporation Limited	1982-83 1983-84 1984-85 1985-86 1986-87	31.12.1983 31.12.1984 31.12.1985 31.12.1986 31.12.1987	N.A. N.A. 12.05.1997 Yet to be placed -Do-	-- -- 136 207 195
10.	Bihar State Leather Industries Development Corporation Limited	1977-78 1978-79 1979-80 1980-81 1981-82	31.12.1978 31.12.1979 31.12.1980 31.12.1981 31.12.1982	N.A. Yet to be placed -Do- -Do- -Do-	-- 291 279 267 255
11.	Bihar State Construction Corporation Limited	1981-82 1982-83 1983-84 1984-85 1985-86	31.03.1984 31.03.1985 31.03.1986 31.03.1987 31.03.1988	N.A. N.A. N.A. N.A. N.A.	-- -- -- -- --
12.	Bihar State Pharmaceutical & Chemical Development Corporation Limited	1981-82 1982-83 1983-84 1984-85 1985-86	31.12.1982 31.12.1983 31.12.1984 31.12.1985 31.12.1986	N.A. N.A. N.A. N.A. N.A.	-- -- -- -- --

ANNEXURE - 26

Referred to in paragraph No 4.4.9

Statement showing the comparative position of clearance of arrears

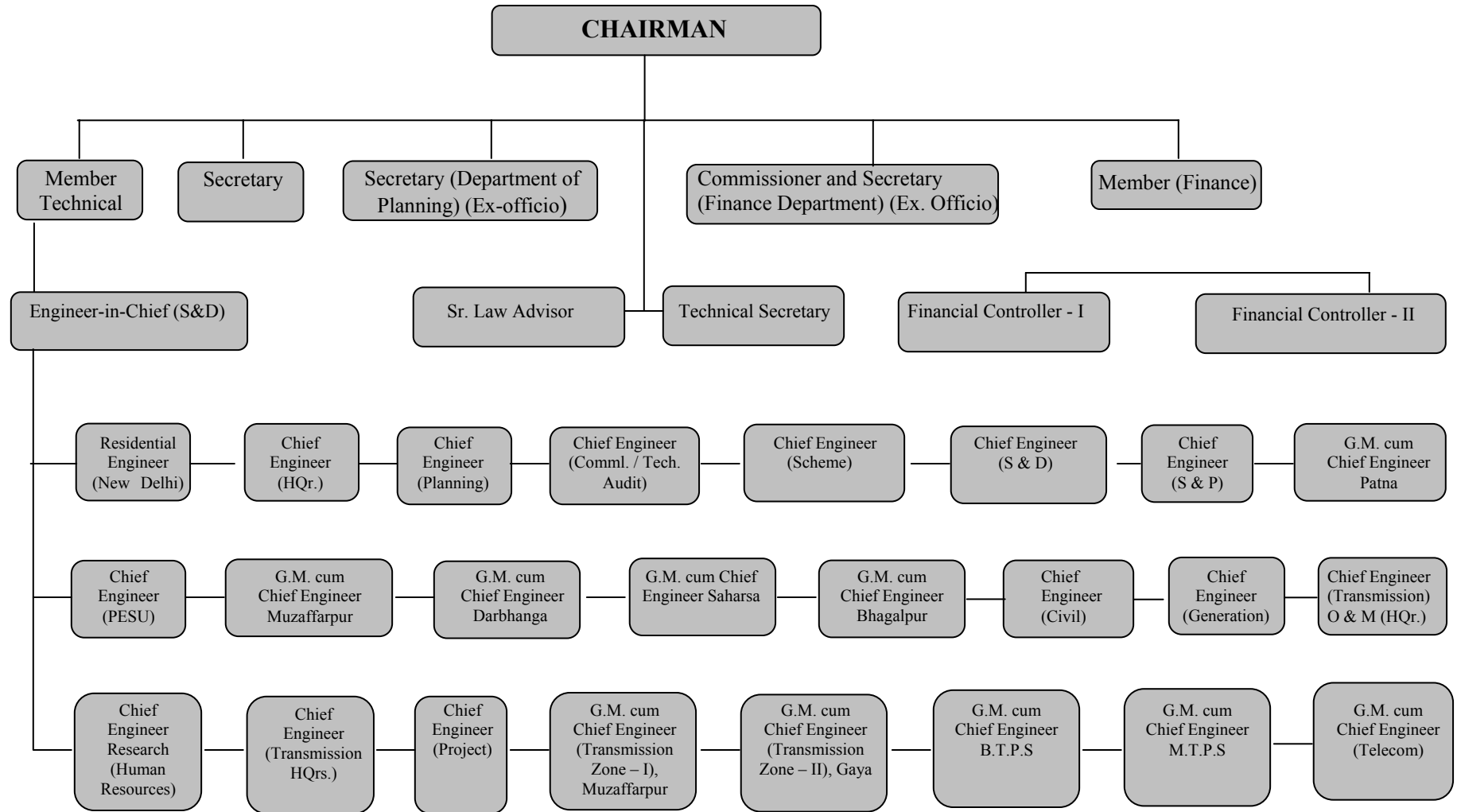
Sl. No.	Name of the company	As on 30.09.2000*	As on 30.09.2001*	As on 30.09.02*	As on 30.09.2003*	As on 30.09.04*
		Accounts in arrears	Accounts in arrears	Accounts in arrears	Accounts in arrears	Accounts in arrears
Working companies						
1.	Bihar State Mineral Development Corporation Limited	1998-99 to 1999-2000 (02)	1998-99 to 2000-01 (03)	1999-2000 to 2001-02 (03)	1999-2000 to 2002-03 (04)	2000-01 to 2003-04 (04)
2.	Bihar State Food and Civil Supplies Corporation Limited	1981-82 to 1999-2000 (19)	1981-82 to 2000-01 (20)	1981-82 to 2001-02 (21)	1981-82 to 2002-03 (22)	1983-84** to 2003-04 (21)
3.	Bihar State Tourism Development Corporation Limited	1988-89 to 1999-2000 (12)	1989-90 to 2000-01 (12)	1989-90 to 2001-02 (13)	1992-93 to 2002-03 (11)	1993-94 to 2003-04 (11)
4.	Bihar State Hydro Electric Power Corporation Limited	1994-95 to 1999-2000 (06)	1994-95 to 2000-01 (07)	1994-95 to 2001-02 (08)	1995-96 to 2002-03 (08)	1995-96 to 2003-04 (09)
5.	Bihar State Credit and Investment Corporation Limited	1996-97 to 1999-2000 (04)	1997-98 to 2000-01 (04)	1997-98 to 2001-02 (05)	1998-99 to 2002-03 (05)	1998-99 to 2003-04 (06)

Non working companies						
6.	Bihar Hill Area Lift Irrigation Corporation Limited	1983-84 to 1999-2000 (17)	1983-84 to 2000-01 (18)	1983-84 to 2001-02 (19)	1983-84 to 2002-03 (20)	1983-84 to 2003-04 (21)
7.	Bihar State Agro Industries Development Corporation Limited	1987-88 to 1999-2000 (13)	1987-88 to 2000-01 (14)	1987-88 to 2001-02 (15)	1987-88 to 2002-03 (16)	1987-88 to 2003-04 (17)
8.	Bihar State Small Industries Corporation Limited	1988-89 to 1999-2000 (12)	1988-89 to 2000-01 (13)	1989-90 to 2001-02 (13)	1990-91 to 2002-03 (13)	1990-91 to 2003-04 (14)
9.	Bihar State Industrial Development Corporation Limited	1987-88 to 1999-2000 (13)	1987-88 to 2000-01 (14)	1987-88 to 2001-02 (15)	1987-88 to 2002-03 (16)	1987-88 to 2003-04 (17)
10.	Bihar State Leather Industrial Development Corporation Limited	1982-83 to 1999-2000 (18)	1982-83 to 2000-01 (19)	1982-83 to 2001-02 (20)	1982-83 to 2002-03 (21)	1982-83 to 2003-04 (22)
11.	Bihar State Construction Corporation Limited	1985-86 to 1999-2000 (15)	1985-86 to 2000-01 (16)	1985-86 to 2001-02 (17)	1986-87 to 2002-03 (17)	1986-87 to 2003-04 (18)
12.	Bihar State Pharmaceutical & Chemical Development Corporation Limited	1986-87 to 1999-2000 (14)	1986-87 to 2000-01 (15)	1986-87 to 2001-02 (16)	1986-87 to 2002-03 (17)	1986-87 to 2003-04 (18)

**On the basis of Audit report.*

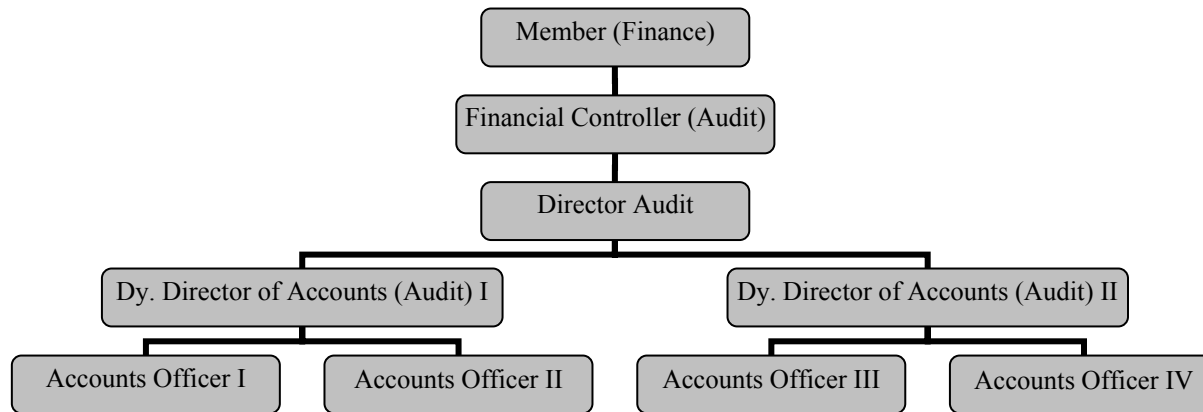
***Annual accounts for 1982-83 received in September 2004.*

ANNEXURE - 27
Referred to in paragraph No. 4.5
Bihar State Electricity Board
(Organisation Chart)



ANNEXURE - 28

Referred to in Paragraph NO 4.5
ORGANISATIONAL SET UP OF INTERNAL AUDIT



ANNEXURE - 29

Referred to in paragraph No 4.5.3

Statement showing Budget Estimates, Revised Estimates and Actuals

Year 1999-2000

(Rupees in crore)

(RSI. No.)	Particulars	Budget Estimate	Revised Estimate	Variance between original and revised estimates		Actuals	Variance between revised estimates and actuals	
				Amount	Percentage		Amount	Percentage
A	Income							
1	Revenue from sale of power	1,948.02	1,872.25	(-) 75.77	3.89	1,817.65	(-) 54.60	2.92
2	Other income	344.35	409.45	65.10	18.90	468.52	59.07	14.43
	Sub-total	2,292.37	2,281.70	(-) 10.67	0.46	2,286.17	4.47	0.20
B	Expenditures							
1	Power purchase	1,662.46	1,822.80	(-) 160.34	9.64	1,704.96	117.84	6.46
2	Generation cost	307.96	244.29	63.67	20.67	248.50	(-) 4.21	1.72
3	Repair & Maintenance	104.01	106.07	(-) 2.06	1.98	44.24	61.83	58.29
4	Employees cost and Administrative Expenses	434.17	453.17	(-) 19.00	4.38	418.24	34.93	7.71
5	Inertest and Financial charges	145.22	135.12	10.10	6.95	696.20	(-) 561.08	415.24
6	Depreciation	187.00	200.00	(-) 13.00	6.95	184.73	15.27	7.63
	Sub-total	2,840.82	2,961.45	(-) 120.63	4.25	3,296.87	(-) 335.42	11.33
C	Surplus (+)/Deficit (-)	(-) 548.45	(-) 679.75	(-) 131.30	23.94	(-) 1010.70	(-) 330.95	48.69

Year 2000-01

(Rupees in crore)

Sl. No.	Particulars	Budget Estimates	Revised Estimates	Variance between original and revised estimates		Actuals	Variance between revised estimates and actuals	
				Amount	Percentage		Amount	Percentage
A	Income							
1	Revenue from sale of power	2,012.37	1,866.03	(-) 146.34	7.24	2,136.13	270.10	14.47
2	Other income	413.83	425.84	12.01	2.90	1,440.82	1,014.98	238.35
	Sub-total	2,426.20	2,291.87	(-) 134.33	5.54	3,576.95	1,285.08	56.07
B	Expenditures							
1	Power purchase	1,930.45	1,715.73	214.72	11.12	1,868.55	(-) 152.82	8.91
2	Generation cost	253.69	220.86	32.83	12.94	252.85	(-) 31.99	14.48
3	Repair & Maintenance	109.34	130.51	(-) 21.17	19.36	47.36	83.16	63.72
4	Employees cost and Administrative Expenses	656.16	704.79	(-) 48.63	7.41	1,198.22	(-) 493.43	70.01
5	Inertest and Financial charges	127.52	791.58	(-) 664.06	520.75	908.88	(-) 117.30	14.82
6	Depreciation	220.00	200.00	20.00	9.09	196.01	3.99	1.99
	Sub-total	3,297.16	3,763.47	(-) 466.31	14.14	4,471.87	(-) 708.40	18.82
C	Surplus (+)/ Deficit (-)	(-) 870.96	(-) 1471.60	(-) 600.64	68.96	(-) 894.92	576.68	39.19

Year 2001-02

(Rupees in crore)

Sl. No.	Particulars	Budget Estimate	Revised Estimates	Variance between original and revised estimates		Actuals (Provisional)	Variance between revised estimates and actuals	
				Amount	Percentage		Amount	Percentage
A	Income							
1	Revenue from sale of power	2,151.97	997.04	(-) 1154.93	53.67	914.76	(-) 82.28	8.25
2	Other income	436.53	355.00	(-) 81.53	18.68	422.04	67.04	18.88
	Sub-total	2,588.50	1,352.04	(-) 1236.46	47.77	1,336.80	(-) 15.24	1.13
B	Expenditures							
1	Power purchase	1,882.79	1,195.33	687.46	36.51	1128.15	67.18	5.62
2	Generation cost	337.20	107.75	229.45	68.05	120.47	(-) 12.72	11.81
3	Repair & Maintenance	132.35	77.16	55.19	41.70	27.20	49.96	64.75
4	Employees cost and Administrative Expenses	740.30	372.13	368.17	49.73	364.06	8.07	2.17
5	Inertest and Financial charges	819.39	63.25	756.14	92.28	508.32	(-) 445.07	703.67
6	Depreciation	210.00	130.00	80.00	38.10	135.62	(-) 5.62	4.32
	Sub-total	4,122.03	1,945.62	2,176.41	52.80	2,283.82	(-) 338.20	17.38
C	Surplus (+)/ Deficit (-)	(-) 1533.53	(-) 593.58	939.95	61.29	(-) 947.02	(-) 353.44	59.54

Year 2002-03

(Rupees in crore)

Sl. No.	Particulars	Budget Estimate	Revised Estimates	Variance between Budget and revised estimates		Actuals	Variance between revised estimates and actuals	
				Amount	Percentage		Amount	Percentage
A	Income							
1	Revenue from sale of power	1,007.00	947.32	(-) 59.68	5.93	774.50	(-) 172.82	18.24
2	Other income	382.50	360.00	(-) 22.50	5.88	NA	NA	NA
	Sub-total	1,389.50	1,307.32	(-) 82.18	5.91	NA	NA	NA
B	Expenditures							
1	Power purchase	1,136.80	1,002.89	133.91	11.78	NA	NA	NA
2	Generation cost	113.20	96.80	16.40	14.49	NA	NA	NA
3	Repair & Maintenance	82.92	41.39	41.53	50.08	NA	NA	NA
4	Employees cost and Administrative Expenses	384.75	430.91	(-) 46.16	12.00	NA	NA	NA
5	Inertest and Financial charges	56.87	56.87	Nil	Nil	NA	NA	NA
6	Depreciation	139.10	139.10	Nil	Nil	NA	NA	NA
	Sub-total	1,913.64	1,767.96	145.68	7.61	NA	NA	NA
C	Surplus (+)/ Deficit (-)	(-) 524.14	(-) 460.64	63.50	12.11	NA	NA	NA

Year 2003-04

(Rupees in crore)

Sl. No.	Particulars	Budget Estimate	Revised Estimates	Variance between Budget and Revised Estimates		Actuals	Variance between revised estimates and actuals	
				Amount	Percentage		Amount	Percentage
A	Income							
1	Revenue from sale of power	1,043.04	NA	NA	NA	NA	NA	NA
2	Other income	390.25	NA	NA	NA	NA	NA	NA
	Sub-total	1,433.29	NA	NA	NA	NA	NA	NA
B	Expenditures							
1	Power purchase	1,002.89	NA	NA	NA	NA	NA	NA
2	Generation cost	181.78	NA	NA	NA	NA	NA	NA
3	Repair & Maintenance	42.63	NA	NA	NA	NA	NA	NA
4	Employees cost and Administrative Expenses	450.61	NA	NA	NA	NA	NA	NA
5	Inertest and Financial charges	53.21	NA	NA	NA	NA	NA	NA
6	Depreciation	148.84	NA	NA	NA	NA	NA	NA
	Sub-total	1,879.96	NA	NA	NA	NA	NA	NA
C	Surplus (+)/ Deficit (-)	(-) 446.67	NA	NA	NA	NA	NA	NA

ANNEXURE - 30

Referred to in paragraph No 4.5.4

Statement showing delay in preparation of accounts

Year	1998-99	1999-2000	2000-01
Due date of preparation of accounts	30.06.1999	30.06.2000	30.06.2001
Date of approval of accounts by the Board	26.02.2000	25.01.2001	04.03.2003
Delay in preparation of accounts in months	8	7	20

ANNEXURE – 31**Referred to in paragraph No 4.5.5****Details of time barred claims**

(Taken from Audit Report (Commercial) - Government of Bihar)

(Rupees in crore)

Sl. No.	Para No of Audit Report (C)	Period	Amount
1	3.B.1.11	1999-2000	2.31
2	3.1.11	2000-01	1.17
3	3.77	2001-02	10.77
4	4.6	2002-03	1.19
Total			15.44

ANNEXURE – 32

**Referred to in paragraph No 4.5.6
Statement showing details of cases of detection of theft of power**

(Rupees in crore)

Sl.No.	Year	No. of Police parties available	No. of Police parties utilised	No. of FIRs lodged for theft cases detected			Amount involved	Amount recovered
				HTIS	Others	Total		
1.	2001-02	1812	NA	NA	NA	2968	4.11	NA
2.	2002-03	1812	810	Nil	2495	2495	4.12	1.18
3.	2003-04	1812	524	Nil	1534	1534	2.89	1.14
	Total	5436	1334	Nil	4029	6997	11.12	2.32

ANNEXURE - 33**Referred to in paragraph No 4.5.7****Statement showing details of non/delayed receipt of revenue**

Sl.No	Particulars	Nos. of sub-divisions	Amount involved (Rupees)	Period of delay	Interest lost (Rupees in lakh)
1	Delay in remittances	8	2.19 crore	1 to 10 months	3.99
2	Delay in receipt of cheques/drafts	18	1.86 crore	½ month to 15 months	3.25
3	Missing credits	19	1.91 crore	2 to 40 months	25.03
4	Cheques deposited but not credited	6	13.75 lakh	1 to 26 years	14.85
5	Amount wrongly debited by banks	1	4.86 lakh	10 years	5.39
6	Amount received short	5	0.30 lakh	December 2000 to February 2004	Nil
Total			6.15 crore		52.51

ANNEXURE - 34

Referred to in paragraph No 4.5.9

Statement showing inventory held by the Board

(Rupees in crore)

Sl. No.	Particulars	1999-2000	2000-01
1	Fuel stock	66.97	72.92
2	Material stock	134.34	145.72
3	Material pending inspection	Nil	5.26
4	Material in transit	(-) 4.00	(-) 4.20
5	Other material	2.06	2.84
6	Fuel stock excess/shortage pending investigation	6.34	Nil
7	Material stock excess/shortage pending investigation	(-) 1.26	Nil
Total		204.45	222.54

Note: The figures for 2001-02 to 2003-04 were not available, as the accounts were not prepared by the Board.

ANNEXURE - 35

Referred to in paragraph No 4.5.12

Statement showing shortages found on physical verification of stores

Year	No. of stores verified	No. of stores where shortages detected	No. of items of stores found short	Valuation of stores/ (items) (Rs. in lakh)	Shortages regularised			
					No. of stores	No. of items	Valued no. of items	Amount (in rupees)
1999-2000	9	9	120	3.45 (82)	2	8	5	940
2000-2001	7	4	107	0.60 (9)	1	3	2	6938
2001-2002	10	5	136	2.52 (37)	2	101	2	3335
2002-2003	8	3	232	44.98 (232)	Nil	Nil	Nil	Nil
2003-2004	24	16	491	30.75 (387)	Nil	Nil	Nil	Nil
Total	58	37	1086	82.30 (747)	5	112	9	11213

ANNEXURE - 36

Referred to in paragraph No 4.5.14

Statement showing surplus/excess employees in Bihar State Electricity Board

Sl. No.	Post	Scale of Pay (Rs)	Sanctioned post Before/After	Actual Before/After	Surplus Before/After	Basic Pay	Amount (including allowances) Before/After (Rs. in lakh)	
1	Asstt.Operator	3,980-7,475	447/241	507/319	60/78	5,728	116.63	238.70
2	Bearer cum night guard/chawkidar	3,000-5,270	1/1	4/2	3/1	4,135	4.22	2.22
3	Boiler operator	4,720-9,040	1/1	4/3	3/2	6,880	7.03	7.38
4	Cable jointer II	4,720-9,040	2/1	12/10	10/9	6,880	23.45	33.21
5	Care Taker	4,720-9,040	5/3	11/4	6/1	6,880	14.07	3.69
6	Fitter grade II/ Fitter	3,675-6,780	57/31	71/37	14/6	5,228	24.90	16.80
7	Mason Grade II/ Raj Mistry	3,980-7,475	7/4	17/7	10/3	5,728	19.44	9.18
8	Meter Tester/ Meter Mechanic	4,410-8,175	29/16	57/31	28/15	6,293	60.21	50.76
9	Plumber Mistry	3,980-7,475	5/3	8/8	3/5	5,728	5.83	15.30
10	Pump operator	3,675-6,780	4/2	33/15	29/13	5,228	51.58	36.39
11	Shift Guard	3,000-5,270	139/75	156/88	17/13	4,135	23.93	28.80
12	Supervisor (Telecom)	4,720-9,040	2/1	9/3	7/2	6,880	16.41	7.38
13	Technician (Telecome)	4,720-9,040	1/1	52/36	51/35	6,880	119.58	129.16
14	Welder	3,980-7,475	2/1	8/10	6/9	5,728	11.66	27.54
15	Unit Control Engineer	8,125-13,650	0	8/2	8/2	10,888	29.38	11.57
16	Assistant Patrol Man	3,675-6,780	0	1/1	1/1	5,228	1.78	2.80
17	Dispatcher/ Diarist	3,980-7,475	0	3/2	3/2	5,728	5.83	6.12
18	Electric Fitter	3,675-6,780	0	1/1	1/1	5,228	1.78	2.80
19	Gas Cutter	3,675-6,780	0	6/3	6/3	5,228	10.67	8.40
20	Gas fitter	3,675-6,780	0	1/1	1/1	5,228	1.78	2.80

21	Helper	3,000-5,270	0	10/3	10/3	4,135	14.08	6.65
22	Jr. Draughtsman	3,980-7,475	0	1/1	1/1	5,728	1.94	3.06
23	Driver/ Over loader	4,410-8,175	0	3/3	3/3	6,293	6.45	10.15
24	Steel Fabricator	3,200-5,960	0	1/1	1/1	4,580	1.56	2.46
25	Sr. Welder	5,020-9,745	0	1/1	1/1	7,383	2.51	3.95
26	Welder Gr.II	3,980-7,475	0	20/5	20/5	5,728	38.88	15.30
27	Wireman Gr.I	3,980-7,475	0	8/2	8/2	5,728	15.55	6.12
28	Turner Gr.I/ Turner	3,980-7,475	4/2	8/3	4/1	5,728	7.78	3.06
29	Crane Operator	3,980- 7,475	7/4	12/1	5/0	5,728	9.72	0
30	Field Assistant	3,980-7,475	2/1	3/1	1/0	5,728	1.94	0
31	Fuse man	3,675-6,780	1/1	4/1	3/0	5,228	5.33	0
32	Garden Mazdoor	3,000-5,270	2/1	3/1	1/0	4,135	1.41	0
33	Instrumentation Mechanic Gr.II	4,410-8,175	3/2	5/2	2/0	6,293	4.30	0
34	Jack Hammer Operator	3,675-6,780	5/3	10/0	5/0	5,228	8.89	0
35	Lab Assistant (Chemical)	3,980-7,475	3/2	5/0	2/0	5,728	3.89	0
36	Mechanic I/ Mechanic Foreman	4,720-9,040	4/2	8/2	4/0	6,880	9.38	0
37	Mali/unskilled Mali	3,000-5,270	28/15	29/11	1/0	4,135	1.41	0
38	Mixture Operator	3,675-6,780	1/1	5/1	4/0	5,228	7.11	0
39	Packer	3,000-5,270	1/1	3/1	2/0	4,135	2.82	0
40	Pump Mechanic	4,410-8,175	1/1	3/1	2/0	6,293	4.30	0
41	Security Cook	3,675-6,780	5/3	6/3	1/0	5,228	1.78	0
42	Survey Foreman Grade II	4,720-9,040	4/2	9/2	5/0	6,880	11.72	0
43	Telephone Operator	4,410-8,175	5/3	11/0	6/0	6,293	12.90	0
44	Time Keeper	3,980-7,475	5/3	6/3	1/0	5,728	1.94	0
45	Asstt.Surveyor	4,720-9,040	5/3	6/3	1/0	6,880	2.34	0
46	Bearer	3,000-5,270	9/5	10/2	1/0	4,135	1.41	0
47	Dish Washer	3,000-5,270	7/4	8/1	1/0	4,135	1.41	0
48	Drillman/Driller	3,980-7,475	1/1	2/1	1/0	5,728	1.94	0
49	Mid Wife	3,200-5,960	3/2	4/0	1/0	4,580	1.56	0
50	Pump Operator I	3,980-7,475	5/3	6/2	1/0	5,728	1.94	0
51	Road Roller operator/driver	3,980-7,475	2/1	3/1	1/0	5,728	1.94	0

Audit Report (Commercial) for the year ended 31 March 2004

52	Sweeper	3,000-5,270	144/78	149/57	5/0	4,135	7.04	0
53	Welder Gr. I	4,720-9,040	39/21	41/10	2/0	6,880	4.69	0
54	Claim Assistant	4,720-9,040	0	1/0	1/0	6,880	2.34	0
55	Electrician Gr.I	4,720-9,040	0	2/0	2/0	6,880	4.69	0
56	Ferry boy	3,000-5,270	0	5/0	5/0	4,135	7.04	0
57	Fitter cum carpenter	3,980-7,475	0	1/0	1/0	5,728	1.94	0
58	Mechanic Gr.II	4,410-8,175	0	5/0	5/0	6,293	10.75	0
59	Service Man	3,980-7,475	0	3/0	3/0	5,728	5.83	0
60	Sr. Cable Joints	5,020-9,745	0	1/0	1/0	7,383	2.51	0
61	Assistant Driller	3,675-6,780	0	1/0	1/0	5,228	1.78	0
62	AutoElectrician I	4,720-9,040	0	1/0	1/0	6,880	2.34	0
63	Bradma Operator	3,980-7,475	30/16	24/23	0/7	5,728	0	21.42
64	Electrical operator	4,720-9,040	26/14	21/18	0/4	6,880	0	14.76
65	Masalchi	3,000-5,270	2/1	1/2	0/1	4,135	0	2.22
66	Night Guard	3,000-5,270	6/3	2/4	0/1	4,135	0	2.22
67	Pump Attendant	3,675-6,780	12/6	11/9	0/3	5,228	0	8.40
68	SBO Gr. I	3,980-7,475	646/349	638/359	0/10	5,728	0	30.60
69	SBO Gr. II	3,675-6,780	1081/ 584	932/713	0/129	5,228	0	361.10
70	Typist cum Clerk	3,980-7,475	178/96	174/108	0/12	5,728	0	36.72
71	Unskilled Khalasi	3,000-5,270	9061/ 4893	7263/ 5289	0/396	4,135	0	877.56
72	Sr. PA	6,200- 11,050	17/9	14/11	0/2	8625	0	8.52
73	Private Secretary	6,825- 13,175	10/5	8/11	0/6	10,000	0	31.91
74	Section Officer (Board)	6,200- 11,050	42/23	42/30	0/7	8625	0	72.44
	Total				394/797		791.24	2,159.62

Total = (791.24 lakh + 2159.62 lakh) = 2950.86 lakh or say Rs.29.51 crore.

ANNEXURE - 37

Referred to in paragraph No 4.5.15

Statement showing manpower position of Internal Audit Wing

Designation	1 st April 1999		1 st April 2000		1 st April 2001		1 st April 2002		1 st April 2003	
	Sanctioned Strength	Men in Position	Sanctioned Strength	Men in Position	Sanctioned Strength	Men in Position	Sanctioned Strength	Men in Position	Sanctioned Strength	Man in Position
Financial Controller (Audit)	1	1	1	1	1	1	1	1	1	1
Director (Audit)	x	x	x	x	1	x	1	x	1	1
Dy Director (Audit)	3	2	3	2	2	2	2	1	2	x
Account Officer (Audit)	6	4	6	3	4	3	4	3	4	3
Accountant/Sr Auditor	35	14	35	13	35	11	35	6	35	3
AccountAsstt/Auditor	41	36	41	43	41	61	41	39	41	35
Junior Acctt Clerk/Jr Auditor	20	7	20	4	20	1	20	2	20	1
TOTAL	106	64	106	66	104	79	104	52	104	44

ANNEXURE - 38

Referred to in paragraph No 4.5.15

Statement showing audit programmed and done by the Internal Audit

Sl. No	Year	No. of units	Nos. of audit programmed		Actual		Total nos. of special audit conducted
			Unit	%	Unit	%	
1	1999-2000	163	98	60	49	50	7
2	2000-01	163	92	56	61	66	11
3	2001-02	98	74	76	62	84	9
4	2002-03	98	65	66	36	55	11
5	2003-04	98	45	46	16	36	4
	Total	620	374	60	224	60	42

ANNEXURE - 39

Referred to in paragraph No 4.5.16
Statement showing details of Internal Audit Reports

Sl.No.	Year	Total IARs	IARs available	IARs not available
1	1999-2000	245	226	19
2	2000-01	96	77	19
3	2001-02	29	20	9
4	2002-03	56	39	17
5	2003-04	15	9	6
	Total	441	371	70

ANNEXURE - 40

Referred to in paragraph No 4.5.16

Statement showing recovery suggested by Internal Audit and amount recovered

(Rupees in crore)

Sl. No.	Year	Recovery suggested by Internal Audit	Amount actually recovered	Percentage of recovery	Amount remained unrecovered
1	1999-2000	31.32	0.92	2.93	30.40
2	2000-01	14.69	0.34	2.31	14.35
3	2001-02	8.59	0.08	0.93	8.51
4	2002-03	19.39	0.12	0.62	19.27
5	2003-04	2.51	Rs.400/-	0.00	2.51
	Total	76.50	1.46		75.04

ANNEXURE - 41

Referred to in paragraph No 4.5.16

Statement showing time barred claims reported by Internal Audit

(Amount in rupees)

Sl. No.	Name of office	I.A.R. No.	Gross amount	Amount recovered	Net amount
1	Electric Supply Division, Biharsarif (U)	105/99-2000	23,03,795.93	Nil	23,03,795.93
2	Electric Supply Division, Ekangarsarai	361/99-2000	11,99,084.99	Nil	11,99,084.99
3	Electric Supply Division, Arrah (U)	178/99-2000	4,68,030.38	Nil	4,68,030.38
4	Electric Supply Division, Arrah	383/99-2000	17,01,945.46	Nil	17,01,945.46
5	Electric Supply Division, Buxer	58/2000-01	13,43,622.38	Nil	13,43,622.38
6	Electric Supply Division, Bihta	122/2000-01	26,08,022.83	Nil	26,08,022.83
7	Electric Supply Division, Khagaul	17/2002-03	29,91,439.41	Nil	29,91,439.41
8	Electric Supply Division, Arrah (U)	/2002-03	67,60,919.11	Nil	67,60,919.11
9	Electric Supply Division, Biharsharif (R)	/2002-03	82,10,947.10	Nil	82,10,947.10
10	Electric Supply Division, Gulzarbagh, Patna	212/99-2000	1,42,001.00	Nil	1,42,001.00
11	Electric Supply Division, Rajindranagar	178/99-2000	2,52,927.00	Nil	2,52,927.00
12	Electric Supply Division, Danapur (PESU)	169/99-2000	4,07,214.40	Nil	4,07,214.40
13	Electric Supply Division, Gardanibagh	211/99-2000	17,36,976.96	Nil	17,36,976.96
14	Electric Supply Division, Nutan Rajdhani (PESU)	68/99-2000	8,46,759.89	Nil	8,46,759.89
15	Electric Supply Division, Kankarbagh	116/2000-01	91,19,357.00	Nil	91,19,357.00
16	Electric Supply Division, Patna City	73/2000-01	5,74,819.32	Nil	5,74,819.32
17	Electric Supply Division, Bankipur	86/2000-01	51,55,545.00	1,75,298.00	49,80,247.00
18	Electric Supply Division, gulzarbagh	72/2000-01	25,63,792.62	Nil	25,63,792.62
19	Electric Supply Division, Danapur	71/2000-01	51,50,814.45	Nil	51,50,814.45
20	Electric Supply Division, Danapur	87/2000-01	2,40,930.12	Nil	2,40,930.12
21	Electric Supply Division, Danapur	133/2000-01	39,56,100.85	Nil	39,56,100.85
22	Electric Supply Division, Patliputra	992000-01/	14,83,890.56	Nil	14,83,890.56
23	Electric Supply Division, Nutan Rajdhani	64/2000-01	40,48,855.35	Nil	40,48,855.35
24	Electric Supply Division, Nutan Rajdhani	65/2000-01	71,18,954.44	14,84,472.00	56,34,482.44
25	Electric Supply Division, Danapur	5/2001-02	9,99,970.01	Nil	9,99,970.01
26	Electric Supply Division, Patliputra	7/2001-02	20,89,054.71	Nil	20,89,054.71
27	Electric Supply Division, Dak bangalaw	11/2001-02	50,94,417.74	Nil	50,94,417.74
28	Electric Supply Division, Dak bangalaw	10/2001-02	147,01,343.70	Nil	147,01,343.70
29	Electric Supply Division, Rajendra Nagar	54/2002-03	3,89,390.51	Nil	3,89,390.51
30	Electric Supply Division, Dak bangalaw	131/2000-01	74,44,252.34	Nil	74,44,252.34

Audit Report (Commercial) for the year ended 31 March 2004

31	Electric Supply Division, Purnea	375/99-2000	624,985.29	Nil	624,985.29
32	Electric Supply Division, Khagaria	381/99-2000	288,153.38	Nil	288,153.38
33	Electric Supply Division, Circle Purnea	18/2000-01	114,94,560.40	Nil	114,94,560.40
34	Electric Supply Division, Division Purnea	8/2000-01	4,45,126.27	Nil	4,45,126.27
35	Electric Supply Division, Division Purnea	32/2000-01	2,64,631.80	Nil	2,64,631.80
36	Electric Supply Division, Farbisganj	36/2000-01	3,36,883.89	Nil	3,36,883.89
37	Electric Supply Division, Katihar	33/2000-01	21,65,376.25	Nil	21,65,376.25
38	Electric Supply Division, Kishanganj	34/2000-01	10,08,088.80	Nil	10,08,088.80
39	Electric Supply Division, Saharsa	31/2000-01	868,729.24	Nil	868,729.24
40	Electric Supply Division, Supaul	119/2000-01	2,98,317.37	Nil	2,98,317.37
41	Electric Supply Division, Birpur	35/2000-01	59,27,104.09	Nil	59,27,104.09
42	Electric Supply Division, Circle Purnea (Exp)	21/2002-03	92,69,657.14	Nil	92,69,657.14
43	Electric Supply Division, Circle Purnea (HT)	17/2002-03	701,14,195.00	Nil	701,14,195.00
44	Electric Supply Division, Khagaul	24/2002-03	85,74,386.27	Nil	85,74,386.27
45	Electric Supply Division, Birpur	22/2002-03	23,50,450.21	Nil	23,50,450.21
46	Electric Supply Division, Purnea	8/2003-04	58,57,146.07	Nil	58,57,146.07
47	Electric Supply Division, Khatihar	9/2003-04	939,617.46	Nil	939,617.46
48	Electric Supply Division, Saharsa	11/2003-04	586,037.45	Nil	586,037.45
49	Electric Supply Division, Madhupara	5/2003-04	688,905.93	Nil	688,905.93
50	Electric Supply Division, Darbhanga (R)	54/99-2000	596,162.08	Nil	596,162.08
51	Electric Supply Division, Dalsinghsarai	330/99-2000	15,82,504.93	Nil	15,82,504.93
52	Electric Supply Division, Dalsinghsarai	335/99-2000	20,21,334.08	Nil	20,21,334.08
53	Electric Supply Division, Madhubani	349/99-2000	62,62,410.93	Nil	62,62,410.93
54	Electric Supply Division, Madhubani	324/99-2000	22,90,979.95	Nil	22,90,979.95
55	Electric Supply Division, Dalsinghsarai	124/99-2000	43,46,078.00	Nil	43,46,078.00
56	Electric Supply Division, Darbhanga	4/2001-02	421,972.80	Nil	421,972.80
57	Electric Supply Division, Jhanjharpur	51/2002-03	769,363.03	Nil	769,363.03
58	Electric Supply Division, Barauni	18/2002-03	28,14,913.73	Nil	28,14,913.73
59	Electric Supply Division, Samastipur	9/2002-03	23,34,394.42	Nil	23,34,394.42
60	Electric Supply Division, Darbhanga	106/2000-01	144,39,083.70	Nil	144,39,083.70
61	Electric Supply Division, Darbhanga	139/2000-01	961,138.62	Nil	961,138.62
62	Electric Supply Division, Jamui	40/99-2000	15,46,042.95	Nil	15,46,042.95
63	Electric Supply Division, Bhagalpur (R)	139/99-2000	688,457.22	Nil	688,457.22
64	Electric Supply Division, Bhagalpur (R)	300/99-2000	18,15,146.69	Nil	18,15,146.69
65	Electric Supply Division, Mungar	13/99-2000	23,32,233.99	Nil	23,32,233.99
66	Electric Supply Division, Lakhisarai	27/2001-02	38,95,202.00	Nil	38,95,202.00
67	Electric Supply Division, Bhabhua	379/99-2000	41,49,250.59	Nil	41,49,250.59
68	Electric Supply Division, Bikahramganj	52/2000-01	485,480.50	Nil	485,480.50
69	Electric Supply Division, Bikahramganj	12/2002-03	42,31,755.31	Nil	42,31,755.31

70	Electric Supply Division, Circle Muzaffarpur	84/2000-01	764,066.00	Nil	764,066.00
71	Electric Supply Division, Muzaffarpur (E)	83/2000-01	14,94,459.10	Nil	14,94,459.10
72	Electric Supply Division, Muzaffarpur (W)	3/2002-03	81,96,769.50	Nil	81,96,769.50
73	Electric Supply Division, Muzaffarpur (U)	102/99-2000	51,35,083.96	Nil	51,35,083.96
74	Electric Supply Division, Hajipur	8/2002-03	138,94,806.64	8,91,461.18	1,30,03,345.46
75	Electric Supply Division, Chapra (W)	69/99-2000	37,12,168.50	Nil	37,12,168.50
76	Electric Supply Division, Chapra (W)	32/2002-03	26,61,010.00	Nil	26,61,010.00
77	Electric Supply Division, Chapra (E)	285/99-2000	510,369.14	Nil	510,369.14
78	Electric Supply Division, Chapra (E)	8/99-2000	15,89,027.45	Nil	15,89,027.45
79	Electric Supply Division, Chapra (E)	33/2002-03	8,50,473.13	Nil	8,50,473.13
80	Electric Supply Division,	5/99-2000	602,018.17	50,704.00	5,51,314.17
81	Electric Supply Division, Gopalganj (W)	351/99-2000	238,954.07	Nil	238,954.07
82	Electric Supply Division, Siwan (E)	12/2003-04	84,22,064.16	Nil	84,22,064.16
83	Electric Supply Division, Siwan (E)	42/99-2000	82,12,641.73	Nil	82,12,641.73
84	Electric Supply Division, Motihari (S)	35/2002-03	684,226.87	Nil	684,226.87
85	Electric Supply Division, Motihari (S)	22/2000-01	880,368.99	Nil	880,368.99
86	Electric Supply Division, Raxaul	113/2000-01	1169,451.99	Nil	1169,451.99
87	Electric Supply Division, Raxaul	56/2002-03	695,141.78	Nil	695,141.78
88	Electric Supply Division, Raxaul	27/99-2000	39,85,615.09	Nil	39,85,615.09
89	Electric Supply Division, Bettiah	382/99-2000	885,550.76	Nil	885,550.76
90	Electric Supply Division, Jehanabad	147/99-2000	22,59,989.82	Nil	22,59,989.82
91	Electric Supply Division, Nawadah	352/99-2000	22,34,741.19	Nil	22,34,741.19
92	Electric Supply Division, Nawadah (E)	28/2000-01	14,58,314.00	Nil	14,58,314.00
93	Electric Supply Division, Jehanabad	62/2000-01	41,49,947.92	Nil	41,49,947.92
94	Electric Supply Division, Gaya (U)	42/2002-03	676,498.00	Nil	676,498.00
95	Electric Supply Division, Sherghati	39/2002-03	15,63,908.83	Nil	15,63,908.83
96	Electric Supply Division, Gaya (E)	23/2002-03	134,33,184.80	Nil	134,33,184.80
Total			37,15,52,284.98	26,01,935.18	36,89,50,349.80

ANNEXURE - 42

Referred to in paragraph No 4.10

Statement showing the department wise outstanding Inspection Reports (IRs)

Sl.No.	Name of Department	No. of PSUs	No. of outstanding I.R.	No. of outstanding paragraphs	Years from which paragraphs outstanding
1.	Industries	28	146	734	1990-91
2.	Forest & Environment	3	50	311	1990-91
3.	Agriculture	3	40	227	1990-91
4.	Energy	3	1122	5435	N.A.
5.	Animal Husbandry	2	15	56	1990-91
6.	Water Resources	2	9	54	1990-91
7.	Sugar Cane	1	28	198	1990-91
8.	Food, Supply & Commerce	1	81	497	1990-91
9.	Tourism	1	17	97	1990-91
10.	Human Resources Development	1	5	13	1990-91
11.	Road Construction	1	37	197	1990-91
12.	Home	1	11	38	1990-91
13.	Welfare	2	5	42	1990-91
14.	Panchayati Raj	1	4	7	1990-91
15.	Mines and Geology	1	27	129	1990-91
16.	Minor Irrigation	1	6	33	1990-91
17.	Transport	1	58	382	1990-91
18.	Co-operative	1	15	62	1990-91
Total		54	1676	8512	

ANNEXURE - 43

(Referred to in paragraph No 4.10)

Statement showing the department wise draft paragraphs/reviews reply to which are awaited

Sl.No.	Name of Department	No. of draft paragraphs	No. of reviews	Periods of issue
1.	Energy	5	1	3/04 to 7/04
2.	Industry	1	1	7/04 to 8/04
3.	Tourism	--	1	8/04
4.	Food & Civil Supplies	1	--	8/04
5.	Welfare	1	--	3/04
6.	Tourism, Agriculture, Mines & Geology, Minor Irrigation and Water Resources	1	--	6/04