

ANNEXURE-11
(Referred to in paragraph 2.7.2)

Statement showing position of funds received and cash balance in Bihar Police Buildings Construction Corporation Limited

(Amount: Rupees in lakh)

Year	Construction funds available	Cash balances (Progressive)			
		Fixed deposit	Current/savings bank/ deposit in P.L. account	Cash in hand	Total
1998-99 (closing balance)	4,128.39				
1999-2000	5,213.44	6,198.39	2,057.30	3.43	8,259.12
2000-2001	9.93	4,525.39	1,634.33	2.86	6,162.58
2001-2002	0.26	2,883.20	1,884.86	2.83	4,770.89
2002-2003	7,090.00	226.73	6,997.56	0.99	7,225.28
2003-2004	-	35.58	5,682.61	2.35	5,720.54

ANNEXURE - 12
(Referred to in paragraph 2.7.4)

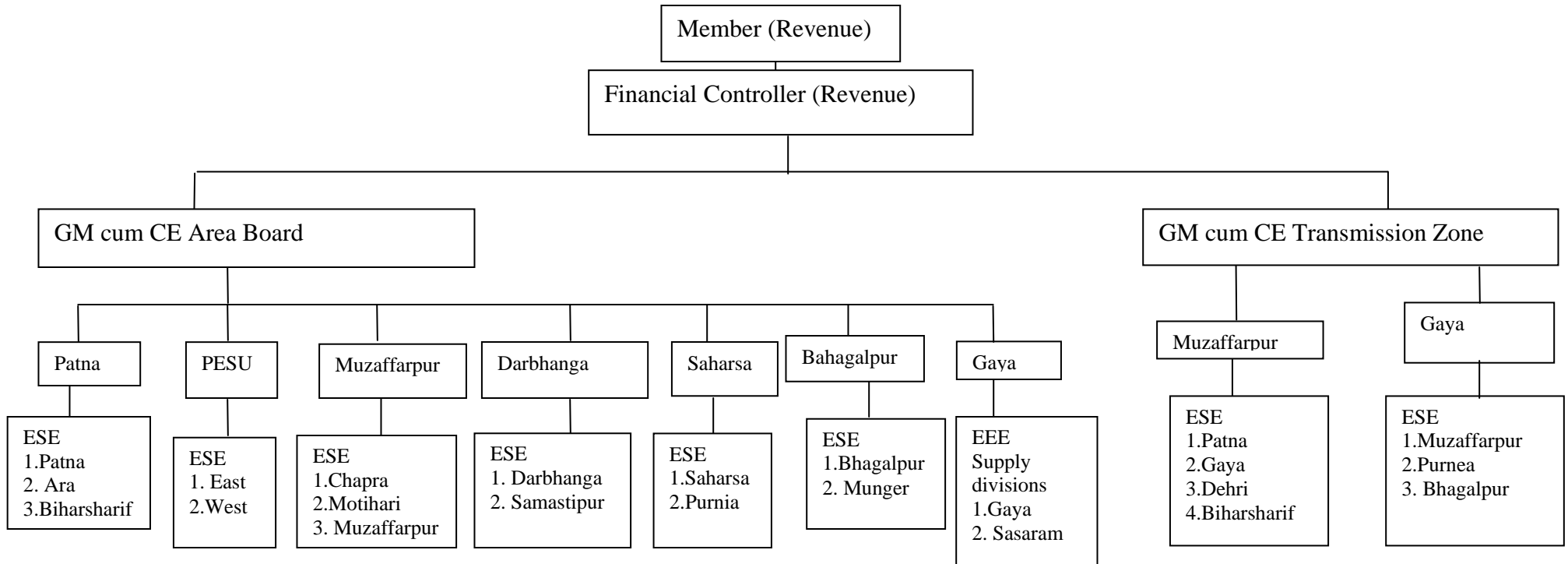
Financial position of Bihar Police Buildings Construction Corporation Ltd.

(Amount: Rupees in lakh)

Particulars	2000-01	2001-02	2002-03	2003-04
	Provisional			
Sources of funds:				
Shareholders' funds (A)	10.00	10.00	10.00	10.00
Secured Loans: (From Government of Bihar) (B)	42.90	42.90	42.90	42.90
Total (A) + (B)	52.90	52.90	52.90	52.90
Application of funds				
Fixed Assets:				
Gross Block	60.61	62.91	20.92	19.02
Less: Depreciation	37.76	41.82	3.19	2.62
(C)	22.85	21.09	17.73	16.40
Net Current Assets:				
Current Assets	17,714.45	18,072.88	25,465.04	25,609.05
Less: Current liabilities	18,168.37	18,409.63	25,722.19	26,035.36
(D)	(-) 453.92	(-) 336.75	(-) 257.15	(-) 426.31
Accumulated losses (E)	483.97	368.56	292.32	462.81
(C) + (D) + (E)	52.90	52.90	52.90	52.90
Net worth	(-) 473.97	(-) 358.56	(-) 282.32	(-) 452.81

ANNEXURE - 13

**(Referred to in paragraph 3.1.1)
Organisational set up of Revenue Management of B.S.E.B.**



ANNEXURE - 14

(Referred to in paragraph 3.1.12)

Statement showing details of dues outstanding against State Government undertakings
as on 31 March 2004.

(Amount: Rupees in lakh)

Sl. No.	Name of Undertaking	Amount
1	Bihar State Housing Board	887.29
2	Bihar State Road Transport Corporation	330.03
3	Bihar State Hydro Electric Power Corporation Ltd.	84.62
4	Bihar State Sugar Corporation Ltd.	234.13
5	Bihar School Examination Board	42.65
6	Bihar Rajya Jal Path Nigam	46.59
7	Bihar State Dairy Corporation Ltd.	71.76
8	Bihar State Food & Civil Supplies Corporation Ltd.	3.28
9	Bihar State Agriculture Marketing Board	48.33
10	SCADA	28.07
11	Bihar State Leather Corporation Ltd.	8.96
12	Biscomaun	48.20
13	Civil Aviation Authority	4.17
14	Bihar State Khadi Board	4.86
15	Bihar Public Service Commission	0.10
16	Gate Public Library	0.29
17	Industrial Development Authority	5.00
18	Bihar State Handloom & Handicraft Corporation Ltd.	1.57
Total		1,849.90

ANNEXURE - 15
(Referred to in paragraph 3.1.13)
Statement showing inflated figures of outstanding dues

(Amount: Rupees in lakh)

Sl. No.	Name of Supply (Circle)	Name/No. of Consumer	Amount of dues	Inflated amount	Remarks
1	Saharsa	M/s Vishal Rolling Mill Pvt Ltd., Patuaha – PTA-1	138.91 (5/02)	102.44	Line disconnected (27.10.99) but billed upto 5/02.
2	Motihari	M/s Prabha Electro Casting Pvt. Ltd., Raxaul – HTSS-2	218.58 (5/01)	182.16	Line disconnected (5/01) and billed for “notice period” (5/2002) and certificate case filed (1/03) wrongly.
3	Patna	M/s JMD Alloys Ltd., Bihta- AP-1645	8848.18 (3/05)	8756.42	Due to error in assessment of load
Total			9,205.67	9,041.02	

ANNEXURE - 16

(Referred to in paragraph 3.1.17)

Statement showing details of outstanding dues against the disconnected HT Consumers

Sl. No.	Name of Supply Circle	Certificate case filed		Case not filed so far (March 2005)		Time barred claims						Grand total	
		(1)		(2)		Case filed after three years (3)		Case not filed at all (4)		Total (5) = (3)+(4)		(6) = (1) + (2) + (5)	
		No.	Amount	No.	Amount	No.	Amount	No.	Amount	No.	Amount	No.	Amount
1	Patna	17	31,18,49,638	Nil	Nil	2	9,50,783	3	49,37,115	5	58,87,898	22	31,77,37,536
2	Ara	4	5,69,57,128	2	65,71,057	2	40,65,658	Nil	Nil	2	40,65,658	8	6,75,93,843
3	Nalanda	Nil	NIL	Nil	Nil	NIL	Nil	13	1,82,56,473	13	1,82,56,473	13	1,82,56,473
4	Sasaram	7	9,98,68,390	3	37,03,05,899	2	95,11,430	3	22,67,884	5	1,17,79,314	15	48,19,53,603
5	Gaya	9	8,64,34,907	Nil	Nil	5	1,01,08,513	9	93,54,705	14	1,94,63,218	23	10,58,98,125
6	Chapra	12	2,51,75,250	2	26,92,970	1	31,28,798	2	28,79,541	3	60,08,339	17	3,38,76,559
7	Motihari	16	4,39,57,617	3	27,13,559	3	90,69,968	4	6,30,166	7	97,00,134	26	5,63,71,310
8	Muzaffarpur	23	35,28,27,682	3	25,89,930	9	1,53,43,170	10	74,62,111	19	2,28,05,281	45	37,82,22,893
9	Samastipur	17	4,41,19,541	2	1,12,88,108	Nil	Nil	7	1,39,31,780	7	1,39,31,780	26	6,93,39,429
10	Darbhanga	7	2,68,50,835	Nil	Nil	2	59,20,968	8	18,45,66,005	10	19,04,86,973	17	21,73,37,808
11	Pesu East	3	18,14,555	3	8,09,37,726	Nil	Nil	21	7,17,20,939	21	7,17,20,939	27	15,44,73,220
12	pesu West	12	18,22,59,389	5	51,25,663	1	45,48,035	1	20,58,832	2	66,06,867	19	19,39,91,919
13	Munger	2	16,70,863	Nil	Nil	Nil	Nil	1	1,65,329	1	1,65,329	3	18,36,192
14	Bhagalpur	8	4,90,65,971	Nil	Nil	Nil	Nil	Nil	Nil	Nil	Nil	8	4,90,65,971
15	Purnea	21	10,19,64,655	2	75,72,697	8	84,94,589	4	9,10,255	12	94,04,844	35	11,89,42,196
16	Saharsa	1	1,38,90,554	Nil	Nil	Nil	Nil	Nil	Nil	Nil	Nil	1	1,38,90,554
	Total	159	139,87,06,975	25	48,97,97,609	35	7,11,41,912	86	31,91,41,135	121	39,02,83,047	305	227,87,87,631

ANNEXURE - 17
(Referred to in paragraph 3.1.18)
Statement showing the dues kept in abeyance on the order of Court

Sl. No.	Name of Supply Circle	Name/No. of Consumers	Amount	Remarks
1	Muzaffarpur	M/s Ganesh Foundry & Casting – HT-11	9,44,40,478	Case No. Misc/8/99
2	Muzaffarpur	M/s Mahua Co-operative Cold Storage – HT-9	6,07,750	CWJC/2962/216
3	Muzaffarpur	M/s Lumbini Beverage, Hajipur – HT-25	28,95,100	Board letter No. 872 dated 23.3.2001
4	Muzaffarpur	M/s Shakti Tubes, Hajipur – HT-4	3,22,224	Dispute in contract demand
5	Purnea	M/s Vankey Steel – P-260	3,05,58,530	LPA/77/2000
6	PESU (West)	M/s Gangotri Electro Casting – 196861 HT	24,56,228	CWJC/9080/03
7	PESU (West)	M/s Bholu Ram Steel – 223706 HT	11,90,496	CWJC No. 923/2000
8	Samastipur	M/s Keshav Sheet Grih Pvt. Ltd.	1,93,808	Since 2001-02
9	Samastipur	M/s Jai Mati Di Metal Pvt. Ltd.	1,49,249	CWJC/11001/2000
Total			13,28,13,863	

ANNEXURE -18
(Referred to in paragraph 3.1.18)
Statement showing the dues kept in abeyance on the orders of the officers of the Bihar State Electricity Board

Sl. No.	Name of the Supply Circle	Name/No. of consumer	Amount in kept in abeyance	Remarks
1	Samastipur	M/s Winsome International.	51,72,464	Vide OSD (Revenue), Bihar State Electricity Board's letter No. 2649 dated 19.12.2003 and 839 dated 22.2.2004
			19,47,460	
2	Muzaffarpur	M/s Bharat Wagon & Engineering Corporation Ltd. – 189/52 HT	65,89,503	Period not known
3	Muzaffarpur	M/s K.V.I.C., Hajipur – HT-34	16,76,971	
4	Muzaffarpur	S.D.O. (Phones), Sitamarhi – HT4/7	1,11,632	
5	PESU (West)	M/s Jagdamba Inspat – 238708 HT	19,34,112	
6	PESU (West)	M/s Hotel Satkar – 14024 HT	4,14,420	
7	Purnea	M/s Puja Agro Food Pvt. Ltd. – P-102	8,99,209	2002-03
Total			1,87,45,771	

ANNEXURE – 19
(Referred to in paragraph 3.1.19)

Statement showing the loss due to not claiming AMG charges, remitted to the HT Consumers, from the State Government under Industrial Policy

Sl. No.	Name of consumer and consumer No.	Contract demand	Date of connection	Year	Amount	Remarks
Patna Supply Circle						
1	M/s Golden Polymax Pvt. Ltd.	350 KVA	19.4.96	1996-97	6,17,413	Relief granted
				1997-98	5,35,157	Relief granted
				1998-99	7,52,534	Relief granted
				1999-2000	3,56,627	Relief granted
2	M/s Bahubali Cement Ltd.	165 KVA	2.5.95	1996-97	33,660	Relief granted
				1997-98	209,759	Relief granted
				1998-99	168,501	Relief granted
				1999-2000	427,423	Relief granted
3	M/s Nirman Re-roller Pvt. Ltd.	350 KVA	18.4.98	1998-99	13,60,799	Relief granted
				1999-2000	10,28,894	Relief granted
				2000-01	7,22,598	Relief granted
				2001-02	7,83,916	Relief granted
4	M/s Kampas Polymax (I) Pvt.Ltd.	150 KVA	16.9.98	1998-99	2,36,429	Relief granted
				1999-2000	3,62,536	Relief granted
				2000-01	4,01,142	Relief granted
5	M/s Ujjwal Wire Product	150 KVA	20.12.99	1999-2000	79,911	Relief granted
				2000-01	88,733	Relief granted
6	M/s Modern Wood Industries	100 KVA	2.7.97 25.8.2000	2000-01	1,36,231	Relief granted
				2001-02	4,96,700	Relief granted
7	M/s Multiply Wood Industries	85 KVA	6.10.98	2000-01	54,463	Relief granted
				2001-02	1,86,561	Relief granted
Sub Total					90,39,987	
PESU (West)						
8	M/s Pratibha Steel Traders – 243797 HT	100 KVA	14.11.99	1999-2000	27,056	Kept in abeyance
				2000-01	2,96,658	Kept in abeyance
				2001-02	2,61,717	Kept in abeyance
9	M/s Bhola Ram Steel – 223706 HT	500 KVA	28.3.98	1998-99	10,10,018	Kept in abeyance
				2000-01	4,87,083	Kept in abeyance
				2001-02	5,16,291	Kept in abeyance
				2002-03	6,68,659	Kept in abeyance
10	M/s Gupta Nutritioner Pvt. Ltd. - 220290 HT	225 450 KVA	7.10.97 18.7.2000	1997-98	1,03,596	Kept in abeyance
				1998-99	1,06,083	Kept in abeyance
PESU (East)						
11	M/s Nesco Steel Pvt. Ltd. –233938 HTS	100 KVA	4.11.99	2000-01	76,611	Relief granted
				2001-02	64,324	Relief granted
				2002-03	77,136	Relief granted
				2003-04	1,14,207	Relief granted

				2004-05	63,621	Not charged
12	M/s Shakti Techno Plast – 234823 HT	80 KVA	18.11.99	1999-2000	28,382	Relief granted
				2001-02	59,338	Not charged
				2002-03	1,55,091	Relief granted
				2003-04 (up to 11/04)	38,900	Not charged
13	M/s Shyam Wire Product – 234667 HT	100 KVA	17.11.99	1999-2000	55,904	Not charged
				2000-01	28,837	Relief granted
				2001-02	93,934	Relief granted
				2002-03	2,31,971	Relief granted
				2003-04	2,02,742	Relief granted
2004-05 (Up to 16.11.2004)	62,113	Not charged				
14	M/s Rainbow Industries – 251800 HT	100 KVA	22.2.2000	2000-01	26,380	Relief granted
				2001-02	1,16,264	Relief granted
				2002-03	1,35,912	Relief granted
				2003-04	2,12,436	Claim pending under Clause-13
				2004-05 (Up to 2/05)	1,91,681	Not charged
15	M/s Patliputra Steel Ltd. – 252071 HT	500 KVA	1.6.2000	2001-02	3,86,196	Relief granted
				2002-03	4,67,473	Relief granted
				2003-04	4,20,361	Relief granted
				2004-05	5,48,886	Not charged
16	M/s Khetan Plast Industries – 254044 HT	100 KVA	10.8.2000	2000-01	35,415	Relief granted
				2001-02	9,858	Relief granted
				2002-03	3,017	Relief granted
				2003-04	1,28,206	Relief granted
				2004-05	67,608	Not charged
17	M/s Kalzan Steel – 209934 HT	335 KVA	17.9.97	1997-98	5,04,721	Relief granted
				1998-99	7,04,022	Relief granted
				1999-2000	7,60,377	Relief granted
				2000-01	9,29,129	Relief granted
				2001-02	6,72,167	Relief granted
				2002-03 (Up to 16.7.02)	1,53,160	Relief granted
Muzaffarpur Supply Circle						
18	M/s S.S.F. Industries, Hajipur – HT-22	224 KVA	15.4.97	1999-2000	3,02,995	Not charged
				2000-01	3,63,282	Not charged
				2001-02	2,52,445	Not charged

				2002-03	Nil	Nil	
				2003-04	1,23,047	Not charged	
19	M/s Amrit Feeders Ltd., Hajipur HT-24	380 KVA	16.10.97	2001-02	2,19,768	Not charged	
20	M/s Lumbini Beverages, Hajipur HT-25	500 KVA	16.1.98	99-2000	6,66,660	Not charged	
				2000-01	3,96,267	Not charged	
				2001-02	4,19,840	Not charged	
				2002-03	3,21,552	Not charged	
21	M/s Bikaner Plasto Flexi Pvt. Ltd., Hajipur, HT-27	100 KVA	18.12.98	99-2000	1,02,071	Not charged	
				2000-01	30,203	Not charged	
				2002-03	1,02,902	Not charged	
				2003-04	1,47,920	Not charged	
22	M/s Green Poly tube Ltd., Hajipur, HT-32	200 KVA	25.1.2000	99-2000	56,302	Not charged	
				2000-01	2,52,111	Not charged	
				2001-02	27,141	Not charged	
				2002-03	52,284	Not charged	
				2003-04	61,433	Not charged	
23	M/s Jyanti Industries, HT-26	150 KVA	27.5.98	99-2000	2,71,740	Not charged	
24	M/s Herbal Industries, BLHT-18 (134 KVA)	189.52 KVA	1.12.99	99-2000	1,18,639	Not charged	
				180.76 KVA	2000-01	43,872	Not charged
				152.95 KVA	2001-02	89,614	Not charged
				216.30 KVA	2002-03	2,24,355	Not charged
				222.48 KVA	2003-04	3,36,383	Not charged
237.93 KVA							
25	M/s Ganesh Udyog, HT-13	150 KVA	7.6.2000	2000-01	1,00,867	Not charged	
				2001-02	2,97,714	Not charged	
				2002-03	2,78,168	Not charged	
				2003-04	3,38,220	Not charged	
Motihari Supply Circle							
26	M/s Port Steel Complex (P) Ltd., Raxaul – 3HT	400 KVA	20.11.97	1997-98	3,52,518	Not realised Certificate case filed.	
				1998-99	3,53,562	Not realised Certificate case filed.	

				1999-2000	30,10,265	Not realised Certificate case filed.
Sasaram Supply Circle						
27	M/s Hanumanji Flour Mills, Kudra – HT-3	200 KVA	7.9.95	1995-96	34,790	Not charged
				1996-97	3,55,058	Not charged
				1997-98	2,00,818	Not charged
				1998-99	1,83,603	Not charged
				1999-2000 (upto 9.2.00)	3,46,831	Not charged
Gaya Supply Circle						
28	M/s Sheo Shakti Re-rolling Mill Pvt. Ltd., Aurangabad – AB-2 HT	140 KVA	27.9.95	27.9.95 to 26.9.2000	18,65,458	Relief granted
29	M/s Jai Bajrang Re- rolling Mills, Barun – BN-HT-3111	250 KVA	22.9.93	1993-94	4,56,333	Relief not granted. So the consumer filed suit in the Patna High Court and own the case. The Board has filed appeal in the court.
				1994-95	9,44,607	
				1995-96	11,10,368	
				1996-97	11,10,368	
Samastipur Supply Circle						
30	M/s Mahabir Petro Products Pvt. Ltd., Barauni – 9A/225 HT	75 KVA	17.10.95	1995-96	30,068	Kept in abeyance
				1996-97	1,13,968	
				1997-98	1,17,789	
				1998-99	93,363	
				1999-2000	18,496	
				2000-01	14,997	
31	M/s Puja Re-rolling Mills Pvt. Ltd., Barauni – S.M./243	260 KVA	3.6.96	1996-97	5,94,896	Not realised Certificate case filed.
				1997-98	7,97,108	
				1998-99	9,08,778	
				(upto 2.6.99)		
32	M/s Neo Carbon Pvt. Ltd., Barauni – TKE-37 HT	233 KVA	7/99	1999-2000	4,55,392	Relief not granted
				2000-01	1,70,248	
				2001-02	1,54,121	
				2002-03	3,42,910	
				2003-04	1,98,618	
				2004-05 (upto 6/04)	1,63,094	
33	M/s Graphite India Ltd., Barauni – BR- 2 HT	375 KVA	9/99	1999-2000	4,00,322	Relief not granted
				2000-01	7,45,845	
				2001-02	5,37,344	
				2002-03	6,46,204	
				2003-04	2,75,350	
				2004-05	1,85,497	

34	M/s Rakesh Mukesh Cold Store & Ice Plant Ltd. – Ullao-602/HTS	150 KVA	10.4.2000	2000-01	2,25,777	Kept in abeyance
				2001-02	2,48,903	
				2002-03	1,67,706	
				2003-04	6,97,199	
				2004-05	2,39,395	
Bhagalpur Supply Circle						
35	M/s Jodhani Food Pvt. Ltd. – BGP-398 HT	350 404 KVA	14.3.2000 1.7.2003	1999-2000	56,713	Not charged
				2002-03	5,92,019	Not realised
				2003-04	3,57,467	Not charged
Saharsa Supply Circle						
36	M/s Ashoka Veneer Products, Madhepura – MDP-1 HT	110 KVA	1.8.2000	2000-01	1,70,843	Relief granted
				2001-02	2,62,643	
				2002-03	2,34,176	
				2003-04	2,48,846	Not charged
Purnea Supply Circle						
37	M/s Arun Rice Mill – K-108	85 KVA	13.10.95	1995-96	1,24,847	Relief granted
				1996-97	2,57,832	
				1997-98	5,02,630	
				1999-2000	42,410	
38	M/s Purnea Cold Storage – GB-1647	160 KVA	28.5.98	1998-99	3,64,224	Relief granted
				1999-2000	2,93,969	
				2000-01	2,71,756	
				2001-02	4,90,123	
				2002-03	3,04,058	
39	M/s Pran Sukh Cold Storage – GB-1042	250 KVA	7.4.2000	2000-01	2,11,537	Relief granted
				2001-02	2,57,408	
				2002-03	3,36,667	
				2003-04	4,04,355	
				2004-05	5,93,578	
40	M/s RKS Industries – P-7	75 KVA	31.8.2000	2000-01	16,378	Relief granted
41	M/s Katihar Cold Storage – KT-12	135 KVA	7.3.97	1998-99	2,49,422	Relief granted
				1999-2000	1,17,320	
				2000-01	77,629	
				2001-02	47,661	
42	M/s Pawanputra Twine Mill Pvt. Ltd. – KT-16	160 KVA	16.9.98	1998-99	1,60,435	Relief granted
				1999-2000	34,192	
				2000-01	35,910	
43	M/s Pinky Panel Products – R-297	100/150 KVA	1.4.98	1998-99	1,26,987	Relief granted
				1999-2000	1,32,996	
				2000-01	3,38,613	

				2001-02	3,17,669	
				2002-03	2,28,584	
44	M/s S.L. Jute Twine Mills – KNG-4709	150 KVA	28.9.99	1999-2000	143904	Relief granted
				2000-01	3,01,909	
				2001-02	3,70,062	
45	M/s Sanjay Plywood Industries – KNG-4165	150 KVA	21.11.99	1999-2000	1,28,868	Relief granted
				2000-01	3,72,209	
				2001-02	4,86,561	
				2002-03	3,11,635	
46	M/s Jai Durga Timber – FBG-336	84 KVA	25.4.98	1998-99	1,65,053	Relief granted
				1999-2000	84,361	
				2000-01	90,185	
				2001-02	1,99,753	
				2002-03	2,37,452	

Abstract:

Sl. No.	Name of Supply Circle	No. of Consumers	Amount of loss
1	Patna Supply Circle	7	90,49,987
2	PESU WEST	3	46,67,656
3	PESU East	7	78,85,900
4	Muzaffarpur	8	69,05,615
5	Gaya	1	18,65,458
6	Motihari	1	50,98,012
7	Bhagalpur	1	11,07,824
8	Samastipur	5	85,43,387
9	Sasaram	1	11,01,100
10	Saharsa	1	9,16,508
11	Purnea	10	91,31,142
Total		45	5,59,72,589

Amount of loss during the period 2000-01 to 2004-05 = Rs. 3,99,01,976

Amount of loss during the prior period (1996-97 to 1999-2000) = Rs. 1,60,70,613

Rs. 5,59,72,589

ANNEXURE – 20

(Referred to in paragraph 3.1.20)

Statement showing details of Remission cases pending with 50 per cent AMG bill amount kept in abeyance

Year	PESU Area		Central Area		Magadh Area		Mithila Area		Tirhut Area		Bhagalpur Area		Kosi Area		Total	
	No.	Amount	No.	Amount	No.	Amount	No.	Amount	No.	Amount	No.	Amount	No.	Amount	No.	Amount
Up to 1990-91	Nil	Nil	Nil	Nil	Nil	Nil	Nil	Nil	Nil	Nil	3	145005	Nil	Nil	3	145005
1991-92 to 1993-4	2	1,80,419	Nil	Nil	Nil	Nil	2	4,72,548	Nil	Nil	Nil	Nil	Nil	Nil	4	652967
1994-95	4	4,14,180	Nil	Nil	Nil	Nil	1	2,42,881	Nil	Nil	Nil	Nil	Nil	Nil	5	6,57,061
1995-96	6	12,11,624	1	1,77,105	Nil	Nil	1	2,65,418	Nil	Nil	Nil	Nil	1	1,16,983	9	1,77,11,030
1996-97	6	12,52,460	1	15,09,656	1	25,607	1	2,68,463	Nil	Nil	Nil	Nil	6	8,35,799	15	38,91,985
1997-98	14	92,91,629	3	8,39,857	1	1,24,729	1	3,09,910	2	47,507	1	5,70,419	5	93,24,359	27	2,05,08,410
1998-99	13	19,13,009	4	22,11,625	2	2,82,533	Nil	Nil	1	33,620	1	8,35,504	7	1,01,97,656	28	1,54,73,947
1999-000	9	12,13,782	5	36,24,908	2	3,85,983	1	2,67,472	3	1,37,395	2	15,79,077	4	6,30,677	26	78,39,294
2000-01	14	23,18,840	10	31,57,438	3	2,49,918	1	2,84,705	4	3,24,038	1	6,71,617	4	5,83,581	37	75,90,137
2001-02	11	15,90,684	6	35,46,464	3	3,00,144	3	4,14,010	5	4,45,487	1	10,54,984	7	26,70,083	36	1,00,21,856
2002-03	16	37,34,882	12	41,19,536	3	4,45,310	2	3,54,293	10	15,07,802	1	8,60,329	4	15,48,305	48	1,25,70,457
2003-04	22	43,90,969	12	57,36,406	3	4,20,356	3	4,33,913	9	9,45,902	1	7,94,659	7	14,35,508	57	1,41,57,713
Total	117	2,75,12,478	54	2,49,22,995	18	22,34,580	16	33,13,613	34	34,41,751	11	65,11,594	45	2,73,42,951	295	9,52,79,962

Remission claims for the review period (1999-2000 claimed in 2000-01 to 2003-04 claimed in 2004-05) = Rs. 5,21,79,457

Remission claims for the prior period (Prior to 1990-91 to 1998-99) claimed in 1999-2000 = Rs. 4,31,00,505

Rs. 9,52,79,962

ANNEXURE - 21
(Referred to in paragraph 3.1.20)

Statement showing details of remission cases pending with 100 per cent AMG bill amount kept in abeyance

Year	PESU Area		Magadh Area		Mithila Area		Tirhut Area		Bhagalpur Area		Kosi Area		Total	
	No.	Amount	No.	Amount	No.	Amount	No.	Amount	No.	Amount	No.	Amount	No.	Amount
upto 1990-91	3	5,01,331	Nil	Nil	Nil	Nil	Nil	Nil	7*	1,38,92,875	Nil	Nil	10	1,43,94,206
1991-92 to 1993-94	2	2,05,119	Nil	Nil	1	2,53,772	Nil	Nil	7	4,28,94,225	Nil	Nil	10	4,33,53,116
1994-95	1	3,11,253	Nil	Nil	Nil	Nil	Nil	Nil	3	1,00,85,397	Nil	Nil	4	1,03,96,650
1995-96	1	3,31,347	Nil	Nil	Nil	Nil	Nil	Nil	1	45,81,831	Nil	Nil	2	49,13,178
1996-97	Nil	Nil	1	31,508	1	1,65,694	Nil	Nil	1	65,55,581	Nil	Nil	3	67,52,783
1997-98	Nil	Nil	3	11,00,776	1	2,55,943	Nil	Nil	2	1,24,82,775	Nil	Nil	6	1,38,39,494
1998-99	2	48,54,191	3	10,87,027	1	4,72,608	Nil	Nil	2	3,15,53,839	Nil	Nil	8	3,79,67,665
1999-2000	Nil	Nil	3	4,69,433	1	6,57,908	Nil	Nil	1	89,32,848	Nil	Nil	5	1,00,60,189
2000-01	Nil	Nil	3	8,27,049	Nil	Nil	Nil	Nil	Nil	Nil	1	11,16,307	4	19,43,356
2001-02	1	72,293	1	8,21,616	Nil	Nil	2	10,52,989	Nil	Nil	Nil	Nil	4	19,46,898
2002-03	1	4,69,499	Nil	Nil	Nil	Nil	3	9,51,984	1	3,61,003	Nil	Nil	5	17,82,486
2003-04	1	55,101	Nil	Nil	1	6,57,541	Nil	Nil	Nil	Nil	Nil	Nil	2	7,12,642
Total	12	68,00,134	14	43,37,409	6	24,63,466	5	20,04,973	25	13,13,40,374	1	11,16,307	63	14,80,62,663

Remission claims for the review period (1999-2000 claimed in 2000-01 to 2000-03-04 claimed in 2004-05) = Rs. 13,16,17,092
 Remission claims for the prior period (Prior to 1990-91 to 1998-99 claimed in 1999-2000) = Rs. 1,64,45,571
Rs.14,80,62,663

* Included three remission claims of Ganga Nahar Pump Yojna, Surajgarha for Rs 1,28,24,004 pertaining to the period 1986-91 but submitted in November 2000.

ANNEXURE - 22
(Referred to in paragraph 3.1.20)

Statement showing details of amount of AMG charges kept in abeyance pending settlement of remission cases

Year	PESU East	PESU West	Patna	Chapra	Motihari	Muzaffarpur	Darbhanga	Sasaram	Bhagalpur	Purnea	Total
upto 1990-91	Nil	Nil	Nil	Nil	Nil	Nil	Nil	Nil	117170 (2)	81017 (1)	198187 (3)
1991-92 to 1993-94	Nil	Nil	Nil	Nil	Nil	Nil	Nil	Nil	Nil	Nil	Nil
1994-95	209229 (1)	Nil	Nil	Nil	Nil	Nil	Nil	Nil	Nil	Nil	209229 (1)
1995-96	Nil	Nil	Nil	Nil	Nil	Nil	Nil	Nil	Nil	Nil	Nil
1996-97	Nil	Nil	369695 (2)	Nil	Nil	Nil	Nil	Nil	Nil	Nil	369695 (2)
1997-98	Nil	Nil	1458805 (2)	Nil	Nil	Nil	Nil	Nil	Nil	Nil	1458805 (2)
1998-99	202371 (1)	Nil	1211526 (2)	Nil	557400 (1)	1007452 (1)	Nil	Nil	Nil	Nil	2978749 (5)
1999-2000	937099 (3)	Nil	Nil	Nil	589975 (2)	133299 (1)	46736 (1)	Nil	Nil	Nil	1707109 (7)
2000-01	50110 (2)	Nil	45602 (1)	59774 (1)	Nil	15530 (1)	Nil	Nil	Nil	Nil	171016 (5)
2001-02	207524 (4)	Nil	1123114 (1)	54733 (1)	Nil	254327 (2)	Nil	Nil	Nil	Nil	1639698 (8)
2002-03	133501 (3)	866059 (2)	1289128 (1)	67626 (1)	Nil	320737 (1)	28220 (1)	Nil	Nil	Nil	2705271 (9)
2003-04	34947 (1)	132461 (1)	467999 (1)	Nil	231102 (1)	368777 (1)	181604 (1)	116170 (1)	Nil	Nil	1533060 (7)
Total	1774781 (15)	998520 (3)	5965869 (10)	182133 (3)	1378477 (4)	2100122 (7)	256560 (3)	116170 (1)	117170 (2)	81017 (1)	12970819 (49)

Remission claims for the review period (1999-2000 claimed in 2000-01 to 2003-04 claimed in 2004-05) = Rs. 52,14,665

Remission claims for the prior period (Prior to 1990-91 to 1998-99) claimed in 1999-2000 = Rs. 77,56,154

Rs. 1,29,70,819

ANNEXURE - 23
(Referred to in paragraph 3.1.20)
Adjustment bills not/short issued after settlement of remission claims of the HT Consumers

Sl. No.	Name of Supply Circle	Name/No. of consumers	Remission Order No. /date	Period	AMG bill amount kept in abeyance	Remission granted	Balance amount	DPS to be charged (31.3.05)	Total	Remarks
1	Patna	M/s Balaji Wire Products – FD-952	5825/30.9.2004	1998-99	80,726	37,376	43,350	60,690	1,04,040	---
			5826/30.9.2004	2001-02	79,781	18,620	61,161	41589	1,02,750	----
2	PESU (West)	M/s ESSKAJAY Ispat –182516 HT	1159/5.4.2000	1993-94	1,80,509	335,357	(-) 154,848	6,74,194	9,92,210	Adjustment bill issued in 5/05 but DPS charged upto 2/05 as was given in Audit Memo (2/05), short by Rs 0.36 lakh.
				1995-96	4,91,421	18,557	4,72,864	4,43,619		
				1996-97	2,34,301	78,097	1,56,204	287,415		
				1997-98	2,06,271	76,777	1,29,494	2,12,370	3,41,864	
3	Chapra	M/s Sasamusa Sugar Works, Gopalganj	28.9.2004	2001-02	1,11,070	61,045	50,025	35,017	85,042	---
Total					13,84,079	6,25,829	7,58,250	13,11,275	20,69,525	

Amount kept in abeyance for the review period (2001-02 claimed in 2002-03) = Rs. 1,90,851

Amount kept in abeyance for the prior period (1993-94 to 1998-99) = Rs. 11,93,228

Rs. 13,84,079

ANNEXURE -24

(Referred to in paragraph 3.1.20)

Statement showing details of excess remission granted to HT consumers under Kosi Area Board

Sl. No.	Name of consumer/Consumer No.	Remission Order	Period	Billed amount of AMG charges (Energy charges + Demand charges)	Amount of remission granted (Energy charges + Demand charges)	Excess amount
1	M/s Vankey Steel, Purnea – P-260	1745/11.6.01	1997-98	1248066 + 0	15,66,422 + 5,70,992	889,348
2	M/s IOC, Forbesganj – FBG-3611 HT	1096/30.4.02	1998-99	127532 + 0	1,27,532 + 27,250	27,250
3	NF Railway, Forbesganj – FBG-306 HT	495/11.2.05	2000-01	10,269 + 0	10,269 + 3,625	3,625
			2001-02	6566 + 0	6,566 + 1,625	1,625
			2002-03	49769 + 0	49,769 + 16,125	16,125
4	Biscomaun Cold Storage, Forbesganj – FBG-2468 HT	1102/30.4.02	1996-97	207295 + 0	2,07,295 + 29500	29,500
			2000-01	38023 + 0	38,023 + 46,000	46,000
5	Barsoi Railway Station – Barsoi-20	Not available	1996-97	194659 + 0	1,94,659 + 40,125	40,125
			1999-2000	277344 + 0	2,69,675 + 12,500	12,500
6	Manihari Railway Station – KT-6	4482/31.10.2 000	1996-97	84208 + 0	2,75,918 + 2,000	1,93,710
			1998-99	46086 + 0	46,086 + ,9500	9,500
			2000-01	34454 + 0	34,454 + 13,750	13,750
7	M/s Sun Bio Technology Ltd., Katihar	1287/17.5.04	2002-03	490773 + 0	4,90,773 + 19,875	19,875
8	M/s Vishnu Flour Mill Pvt. Ltd., Katihar	493/11.2.05	2003-04	202965 + 0	98,680 + 10,375	10,375
Total						13,13,308

Remission claims for the review period (1999-2000 claimed in 2000-01 to 20003-04 claimed in 2004-05) = Rs. 11,89,433

Remission claims for the prior period (1996-97 claimed in 1997-98 to 1998-99 claimed in 1999-2000) = Rs. 1,23,875

Rs. 13,13,308

ANNEXURE - 25

(Referred to in paragraph 3.1.21)

Statement showing fuel surcharge outstanding against Induction Furnace owners

Sl.No.	Name of Supply Circle	Name of consumer	Consumer No.	Amount of arrear fuel surcharge (9/99 to 3/01)
1	Patna	M/s Patwari Steel Pvt. Ltd.	F-01	64,33,050
2	Patna	M/s J.G. Foundry Ltd.	FD-1401	59,64,671
3	Patna	M/s Simran Metals Ltd.	FB-02	9,75,123
4	Patna	M/s Nalanda Electro Steel Pvt. Ltd.	FB-03	33,05,012
5	Patna	M/s Campor Concast Ltd.	BT-3359	64,56,976
6	Patna	M/s JMD Alloys	AP-1643	86,00,511
7	Patna	M/s Balmukund Concast Ltd.	BT-3540	1,63,32,062
8	PESU (West)	M/s Gangotri Electro Casting Ltd.	196861 HT	71,30,900
9	PESU (West)	M/s Jagdamba Ispat Ltd.	238708 HT	61,88,340
10	PESU (East)	M/s Dina Metal Ltd.	148264 HT	1,35,12,559
11	PESU (East)	M/s Dina Iron & Steel Ltd.	213223 HT	1,20,89,182
12	Muzaffarpur	M/s Ganesh Foundry	HT-11	71,01,513
13	Muzaffarpur	M/s Deepak Electro Casting	HT-12	37,89,304
14	Motihari	M/s Trishul Electro Casting	3 HTSS	22,93,336
15	Motihai	M/s Prabha Electro Casting	2 HTSS	25,04,805
16	Munger	M/s Balaji Ingot Pvt. Ltd	KHR-34	75,23,868
17	Samastipur	M/s Jay Mangala Steel	BR-2712	29,33,391
18	Purnea	M/s Super Inducto Steel	MK-14	39,63,155
19	Purnea	M/s Vanky Steel	P-260	15,18,276
Total				11,86,16,034

ANNEXURE - 26

(Referred to in paragraph 3.1.22)

Statement showing dues of one connection to be transferred to another connection of the same consumer

Sl. No.	Name of consumer/ Connection No.	Date of disconnection	Amount of outstanding dues	Other running connection No. of the consumer	Date of transfer	Loss of DPS
Bhagalpur Supply Circle						
1	Barari Water Works, BGP-1	4.1.98	10,21,50,873 (4,88,06,743+ 5,34,44,130)	48001/1014	30.9.2004	22451105 (11/02 to 9/04)
PESU (East)						
2	Patna Water Board (PWB), 20785	28.12.95	1,05,98,971	61501	Not transferred	6147403 (11/02 to 3/05)
3	PWB, 60892	28.12.95	1,23,54,253	72677	Not transferred	7165467 (11/02 to 3/05)
4	PWB, 92171	8.10.96	1,32,82,438	17047	Not transferred	7703814 (11/02 to 3/05)
5	PWB, 60847	3/92	50,23,547	288465	Not transferred	2913657 (11/02 to 3/05)
6	PWB, 60877	29.3.96	92,86,169	90683	Not transferred	5385978 (11/02 to 3/05)
7	PWB, 61105	6.9.88	6,57,367	106721	Not transferred	381273 (11/02 to 3/05)
Munger Supply Circle						
8	Executive Engineer Mechanical, Bhagalpur, DK-1	2.12.99	5,21,18,637 (5231098 + 46887539)	HG-1	Not transferred	2144751 (11/02 to 14.7.04)
Purnea Transmission Circle						
9	Hindustan Fertilizer Corporation Ltd., Barauni, EHT-2	3.6.99	148,64,27,687 <u>1,73,00,000</u> 1,46,91,27,687 (639921525 + 829206162)	BR-1688 (Samastipur Supply Circle)	Not transferred	371154499 (11/02 to 3/05)
Total			169,18,99,942			42,54,47,977

ANNEXURE - 27**(Referred to in paragraph 3.1.23)****Statement showing non-adjustment of dues of the suppliers against their liabilities**

Sl. No.	Name of Supply Circle	Name of Consumer/ Consumer No.	Date since when outstanding	Amount of dues Rs	Amount of liability of suppliers Rs in crore
1	Purnea	WBSEB	12/1986 (Line disconnected)	12,75,217	Power was purchased from WBSEB till 3/01.
2	Sasaram	BSHPC Ltd., Dehri – HT-28	2.8.1993 (Line disconnected)	11,86,079	5.01 (3/02)
3	Bhagalpur	NTPC, Kahalgaon – COL-61, COL- 65	3/95 (Line disconnected)	1,58,728	1436.76
4	Samastipur	Indian Oil Corporation, Barauni	2/2002	2,12,805	
Total				28,32,829	

ANNEXURE - 28
(Referred to in paragraph 3.1.24)

Statement showing advances to suppliers/contractors paid by Board Headquarters

SI No	Name of the party	Amount (Rs)	Year
Advances more than twenty five years			
1	Ion Exchange (India) Ltd	3,26,000	1972
2	S.F. India Ltd, Calcutta	20,750	1975
3	Greaves Cotton & Co	1,65,850	1975
4	Jyoti Limited, Baroda	1,09,180	1975
5	Hindustan Construction Co Ltd, Bombay	25,00,000	1976
6	Power Line Cons Co Ltd, Calcutta	2,42,660	1976
7	Volta Limited, Patna	2,44,983	1977
8	Electric Co of India Ltd	18,546	1977
9	Instrumentation Ltd, Kota	56,60,000	1978
10	Desein, New Delhi	2,00,000	1978
11	Tata Engg & Locomotive Ltd	3,58,262	1978
12	Triveni Structurels Ltd, Allahabad	3,67,552	1978
13	Ion Exchange (India) Ltd	5,97,000	1979
14	Control & Switchgear Pvt Ltd	4,74,080	1979
15	BHEL	90,00,000	1979
16	Pradeep Lamp Works, Patna	25,000	1979
17	Pradeep Lamp Works, Patna	1,36,980	1979
18	Pradeep Lamp Works, Patna	1,40,675	1979
19	Mahindra Spider Ltd, Calcutta	7,79,397	1979
20	Bharat Pump & Compressors Ltd, Allahabad	41,527	1979
21	Englisgh Electric Co Ltd, Calcutta	5,53,737	1979
Total		2,19,62,179	
Advances more than twenty years			
22	Tata Robins Pvt Ltd	1,64,000	1980
23	Siemens India Ltd	31,68,396	1980
24	High Tension Insulators Factory, Ranchi	2,64,195	1980
25	Santosh & Co, New Delhi	2,70,817	1981
26	Blue Star Limited, Calcutta	27,750	1981
27	Englisgh Electric Co Ltd	1,82,000	1981
28	I L, Kota	2,00,000	1982
29	BSL& Crompton Energy Ltd	9,40,050	1982
30	BHEL	34,02,600	1982
31	Larsen & Turbo Calcutta	2,24,962	1982
32	Elemech International Ltd Calcutta	38,97,81	1982
33	BHEL	20,00,000	1982
34	Larsen & Turbo Calcutta	1,84,680	1982
35	Blue Star Limited, Calcutta	30,750	1983
36	Greaves Cotton & Co Ltd Calcutta	46,538	1983
37	Blue Star Limited, Calcutta	45,795	1983

38	The Hindusatn Cosruction Co Ltd Bombay	27,40,000	1983
39	The Hindusatn Cosruction Co Ltd Bombay	27,40,000	1983
40	Isgic Jhon Thompson, Calcutta	9,04,500	1983
41	Patterson Engg co (India) Ltd, Calcutta	2,70,000	1983
42	Isgic Jhon Thompson, Calcutta	18,10,175	1984
43	Crompton Greaves Ltd, Bombay	16,98,240	1984
44	Sam Engineering & Loco. Ltd Bangalore	2,90,000	1984
45	Auto Measurement Ltd Madras	1,01,450	1984
46	Venkateshwara Trans (P) Ltd	29,60,000	1984
47	Tata Exports Ltd	27,73,979	1984
48	Sutlej Construction (P) Ltd	61,48,800	1984
49	Auto Measurement Ltd Madras	1,01,450	1984
50	Pioneer Constr. Co Lucknow	4,00,000	1984
51	Power Line Cons Co Ltd, Calcutta	2,14,020	1984
Total		3,46,94,928	
Advances more than fifteen years			
52	Best & Crompton Engg Ltd, Madras	86,250	1986
53	Pioneer Constr. Co Lucknow	8,11,000	1986
54	Pioneer Constr. Co Lucknow	32,82,000	1986
55	Salems India Ltd	4,40,000	1986
56	Asis Foundation & Cons Ltd, Bombay	2,40,000	1987
57	Usha Breco Ltd, Calcutta	1,62,444	1987
58	Pioneer Constr. Co Lucknow	5,05,050	1987
59	The General Elec Co of India Ltd	13,57,500	1987
60	Voltas Limited	28,80,000	1987
61	BHEL, Bangalore	7,56,000	1987
62	DESEIN Pvt Ltd New Delhi	1,25,000	1987
63	Venta Locomotive Ltd, Hyderabad	4,39,000	1987
64	Pioneer Constr. Co Lucknow	3,59,000	1987
65	Bihar Transmission Ltd Patna	1,78,500	1987
66	BHEL, New Delhi	1,51,248	1987
67	BHEL, New Delhi	10,92,515	1987
68	Masoneilam India Ltd, Madras	1,44,063	1987
69	MEC India Ltd, Bombay	58,000	1987
70	REC International Ltd Bombay	15,81,180	1987
71	BHEL, New Delhi	3,96,000	1987
72	Voltas Limited	1,17,20,000	1987
73	BHEL, New Delhi	31,01,000	1987
74	BHEL	7,60,000	1988
75	BHEL	12,95,985	1988
76	BHEL, New Delhi	10,01,433	1988
77	Indure Pvt Ltd New Delhi	1,35,000	1988
78	BHEL, Hardwar	3,30,000	1988
79	Voltas Limited	90,000	1988
80	Taylor Instrument Co	3,00,000	1988

81	Tata Consulting Engineers Bangalore	1,95,000	1988
82	Swamis Ins Pvt Ltd	1,02,850	1988
83	Indure Pvt Ltd New Delhi	6,10,000	1988
84	Siemns Ltd	2,40,626	1988
85	Light & Co Ltd	14,45,500	1988
86	NGEF Ltd	33,00,000	1989
87	Triveni Structurels Ltd, Allahabad	6,32,645	1989
88	Incab Industries Ltd Calcutta	5,26,175	1989
89	BHEL, Jhanshi	15,48,607	1989
90	Crompton Greaves Ltd	9,25,860	1989
Total		4,33,05,432	
Advances more than ten years			
91	Bharat Bijlee Ltd Calcutta	12,33,445	1990
92	R/M Works	35,00,000	1990
93	Crompton Greaves Ltd	10,07,230	1990
94	NGEF Ltd Calcutta	36,76,500	1992
95	CMC Ltd, Calcutta	23,52,356	1992
96	SAN Engg & Locomotive Co Ltd	6,40,000	1992
97	Telk Ltd Kerala	24,51,000	1992
98	NGEF Ltd	36,76,500	1992
99	Asia Brown Bowen Ltd	5,63,000	1993
100	Crompton Greaves	5,33,600	1993
101	Ion Exchange (India) Ltd	2,10,000	1993
102	Bharat Bijlee Ltd Calcutta	10,89,800	1993
103	DESEIN Pvt Ltd New Delhi	12,73,387.5	1993
104	Bharat Earth Movers Ltd	6,54,000	1993
105	Siemens India Ltd	1,43,260	1994
106	Scantee India Ltd	2,45,990	1994
107	National Productivity Council	30,000	1994
108	Asia Brown Bowen Ltd	4,66,900	1994
109	Crompton Greaves	4,00,200	1994
Total		2,41,47,168.5	
Advances more than seven years			
110	Bharat Earth Movers Ltd	3,70,000	1995
111	Tata Exports Ltd	3,08,000	1995
112	Bharat Bijlee Ltd Calcutta	5,62,386	1995
113	GEC Alsthon	18,78,084	1995
114	Gaman India Ltd	89,87,500	1995
115	GEC Alsthon India Ltd	8,94,565	1995
116	BHEL	20,18,100	1995
117	Crompton Greaves	66,700	1995
118	GEC Alsthon	6,63,526	1995
119	Elecon Engg Co Ltd	7,75,620	1995
120	Mecon Ltd Ranchi	1,53,000	1996
121	Telk Ltd Kerala	4,91,600	1996

122	Desein Beiz Technic Pvt Ltd New Delhi	2,85,000	1996
123	Bharat Bijlee Ltd Calcutta	4,91,600	1996
124	Rpg-RR- Power Engineering Ltd Calcutta	10,00,305	1996
125	ABB ABC Ltd Calcutta	8,22,149	1997
126	IISCO Calcutta	23,01,365	1997
Total		2,20,69,500	
Advances more than five years			
127	Mecon Ltd Ranchi	1,50,000	1998
128	Mecon Ltd Ranchi	1,50,000	1998
129	Indure Pvt Ltd New Delhi	19,40,000	1998
130	BHEL	20,35,500	1998
131	BHEL	50,00,000	1999
Total		92,75,500	
Advances more than three years			
132	Central Electricity Authority	12,00,000	2000
133	Andrew yule & Co Ltd Calcutta	6,72,734.82	2000
134	Andrew yule & Co Ltd Calcutta	5,47,674.91	2000
135	NGEE Ltd Calcutta	50,000	2000
Total		24,70,409.73	
Advances more than two years but less than three years			
136	C.M.C. Ltd Kolkatta	34,79,855	2002
137	Utility power tech Ltd Noida	4,70,000	2002
Total		39,49,855	
Grand Total		16,18,74,973.5	