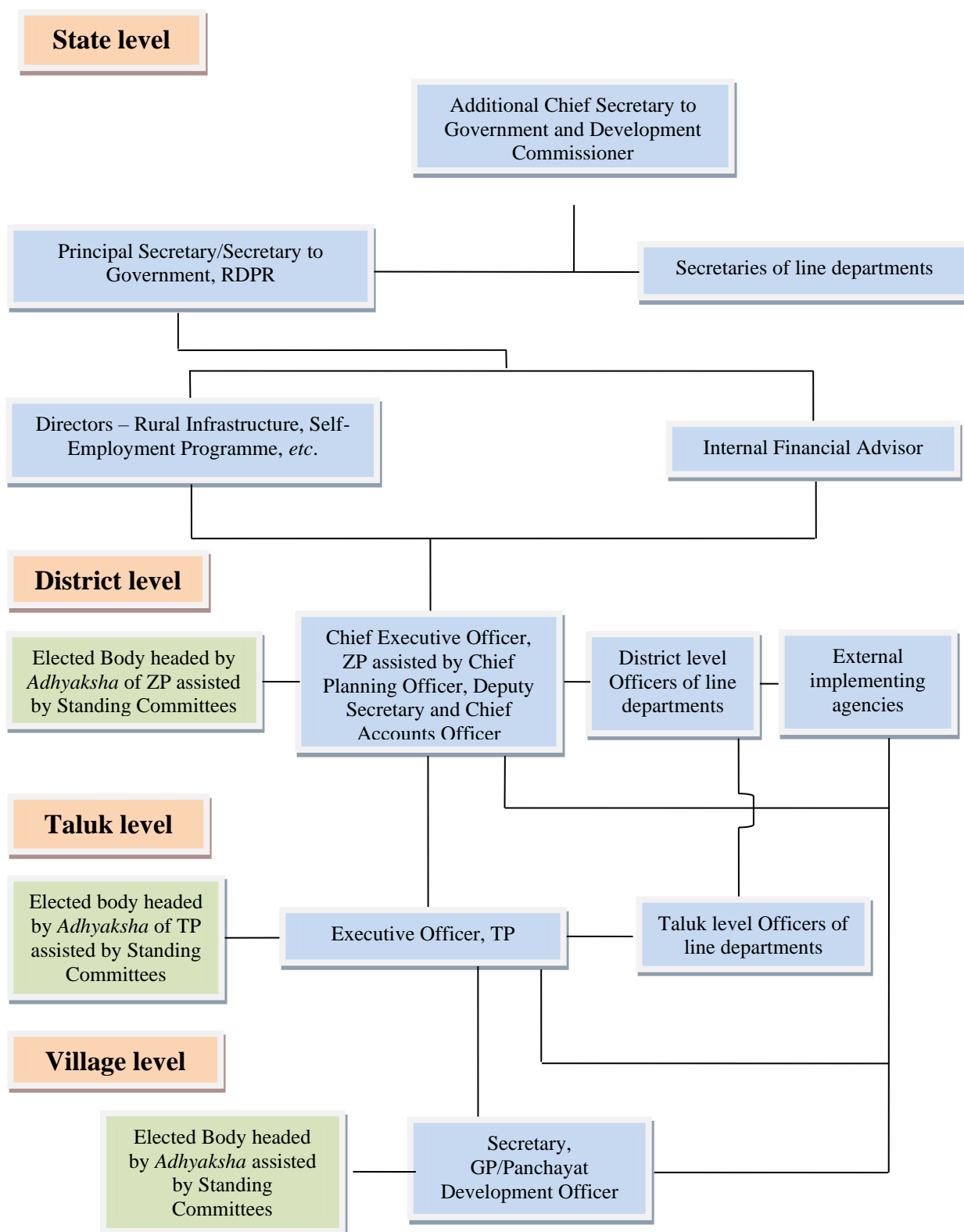


**Appendix 1.1**  
**(Reference: Paragraph 1.2/ Page No. 2)**  
**Organisational structure of Panchayat Raj Institutions**



**Appendix 1.2**  
**(Reference: Paragraph 1.4/ Page No. 2)**  
**Devolution of functions to Panchayat Raj Institutions**

Planning and functions of different departments entrusted to Grama Panchayats, Taluk Panchayats and Zilla Panchayats are specified below:

<b>Sl. No</b>	<b>Subject</b>	<b>Grama Panchayat</b>	<b>Taluk Panchayat</b>	<b>Zilla Panchayat</b>
1.	General functions	1) Preparing Annual action plan for panchayats area development 2) Preparing Annual budget 3) Providing compensations to Natural disasters 4) Preventing encroachment of public assets 5) Organising Self-service and providing contribution to community programmes 6) Maintaining important statistics of villages	1) Preparing annual action plans with regard to plans entrusted by Zilla Panchayats or Government in line with the Act and submitting it to Zilla panchayats for inclusion in the Zilla Plans within the specified time period. 2) Verifying, mobilizing and submitting mobilized plans to Zilla Panchayats, the Annual plans of all villages in the Grama panchayats. 3) Preparing annual budget of taluk panchayats and submitting it to the Zilla Panchayat within the prescribed time 4) Doing functions entrusted by Government or Zilla panchayats and implementing the works 5) Providing compensation in natural disasters	1) Monitoring, coordinating and mobilizing the Developmental schemes and preparing district development plan
2	Agriculture, Horticulture and Sericulture	1) Preparing comprehensive plan, consulting with grama sabha for increase in horticulture products, preparing plans for comprehensive rural agriculture, horticulture and sericulture and monitoring their activities 2) Preparing plans for Agriculture, Horticulture, and sericulture for	1) Preparing Agriculture and horticulture comprehensive rural plans and conducting general and technical training at GP level for implementing them, encouraging agriculture and horticulture and developing them 2) Maintaining Agriculture seed centres (including horticulture Nurseries) 3) Conducting Agriculture fairs and marketing of vegetables, fruits and flowers	1) Developing infrastructure with regard to adopting of biotechnology for increase in horticultural produces 2) Maintaining combined watershed area for areas having more than one GP area 3) Establishing Agricultural and Horticultural farms and commercial farms and maintaining them 4) Providing agricultural inputs like money, water, seeds and fertilisers

Sl. No	Subject	Grama Panchayat	Taluk Panchayat	Zilla Panchayat
		<p>ensuring maximum utilisation of grazing land including barren land.</p> <p>3) Establishing nurseries out of GP funds and maintaining them</p> <p>4) Preparing plan for agriculture mechanisation, recommending and monitoring</p> <p>5) Facilitating establishment of community Agriculture cooperative societies</p> <p>6) Monitoring soil, water and seed protection.</p> <p>7) Maintenance of watershed area</p> <p>8) Exhibiting market prices</p> <p>9) Monitoring agricultural insurances and implementing them</p>	<p>4) Providing technical support by giving training to technical staff and giving training to farmers and broadcasting improved agricultural methods.</p> <p>5) Recommending establishment of Godowns and cold storages depending on the necessity, facilitating Taluk level cooperative societies and agricultural markets and monitoring basic infrastructure at taluk level.</p> <p>6) Accumulating the statics collected by GPs and preparing taluk level plans for agricultural produces and markets.</p> <p>7) Collection of pesticides and distributing them</p>	<p>5) Establishing godowns and maintaining them</p> <p>6) Providing market facilities to agricultural produces and conducting agricultural fairs and exhibitions</p> <p>7) Conducting programmes for popularising new research and pilot studies.</p> <p>8) Conducting Activities for suitable research and development at local level</p> <p>9) Establishing Agriculture and horticulture extension and training centres</p> <p>10) Framing and implementing land improvement and protection programmes entrusted by Government</p> <p>11) Giving training to farmers</p>
3	Minor Irrigation	<p>1) Preparing, implementing, renewing and maintaining all minor irrigation projects of 0–10-hectare achcut area within grama panchayat area</p> <p>2) Maintaining and implementing all minor and small irrigation projects in 0-10 hectares of achcut area of grama panchayat level timely and allocation of available water equally and utilising it completely.</p> <p>3) Recharging ground water and implementing and developing projects related to Rainwater harvesting</p> <p>4) Maintaining all documents including mapping of all irrigation sources in the GP area.</p>	<p>1) Assisting ZP and Government in construction and maintenance of minor irrigation works</p> <p>2) Implementing community irrigation and individual irrigation works</p>	<p>1) Developing ground water resources</p> <p>2) Implementing and maintaining small irrigation projects for 40-hectare area</p>

Sl. No	Subject	Grama Panchayat	Taluk Panchayat	Zilla Panchayat
4	Animal Husbandry, Dairying, Poultry and Fisheries	<ol style="list-style-type: none"> <li>1) Implementing projects related to farms of Dairying, Poultry and sheep entrusted to GPs</li> <li>2) Implementing cattle development schemes entrusted to GPs</li> <li>3) Taking action for controlling epidemic diseases</li> <li>4) Implementing programmes relating to development of fisheries coming in irrigation works under GP jurisdiction.</li> <li>5) Establishing rural Fish and Meat markets and maintaining them.</li> <li>6) Development of grass land</li> </ol>	<ol style="list-style-type: none"> <li>1) Maintenance of Primary Veterinary Centres, First Aid Centres and mobile veterinary clinics</li> <li>2) Providing Medicine, medical assistance to GPs for taking action to control epidemic diseases</li> <li>3) Providing technical experts assistance to farmers and conducting trainings</li> <li>4) Development of breeds of Cattle, Poultry and others</li> <li>5) Encouraging cooperative societies with regard to activities of Animal Husbandry, poultry and Fisheries</li> </ol>	<ol style="list-style-type: none"> <li>1) Preventing epidemic diseases</li> <li>2) Establishing Veterinary Laboratories, Clinics and Mobile clinics</li> <li>3) Establishing Taluk and Village veterinary Hospitals, First aid centres and Mobile veterinary clinics</li> <li>4) Encouraging District Milk Producers Cooperative societies</li> <li>5) Conducting district level training programmes to Farmers</li> <li>6) Providing Medicines, Medical equipment and injections</li> <li>7) Developing Fisheries in the irrigation works coming under Zilla Panchayat</li> <li>8) Implementing Fisheries and Fishermen welfare programmes</li> <li>9) Encouraging Dairying, Poultry and Pig framing</li> </ol>
5	Social forestry	<ol style="list-style-type: none"> <li>1) Afforestation in barren land</li> <li>2) Developing Social forestry, Farm Forestry</li> <li>3) Establishing Markets for Produces of Social Forestry, maintaining the disposing them</li> <li>4) Growing of trees for cattle feed, fuel and Fruits</li> <li>5) Implementing Agricultural Forestry Scheme</li> <li>6) Establishing Nurseries and maintaining them</li> <li>7) Maintaining small forest produces except Reserve Forest, Protected Forest, and Wildlife protected area</li> </ol>	<p>Planting trees and maintaining them along roadside and other public places of its jurisdiction.</p> <p>Growing saplings necessary for GPs and distributing saplings and seeds to GPs</p> <p>Conducting training programmes for providing technical guidance for Fodder Development and fuel plants.</p>	<ol style="list-style-type: none"> <li>1) Preparing guidelines with regard to social forestry and biodiversity maintenance for use of GP and TP</li> <li>2) Encouraging Social and Farm forestry, Fuel Plant, and fodder development</li> <li>3) Maintenance of small forest produces grown in community land</li> </ol>

Sl. No	Subject	Grama Panchayat	Taluk Panchayat	Zilla Panchayat
		<p>8) Planning projects for social forestry and Farm forestry and implementing them.</p> <p>9) Planting trees and maintaining them along roadside and other public places of GP jurisdiction.</p>		
6	Tourism	<p>1) Identifying the tourist places in GPs and submitting proposals regarding their development</p> <p>2) Facilitating tourism activities</p> <p>3) Providing infrastructure to Tourist Bungalows entrusted to GPs and maintaining them</p> <p>4) Collecting entrance fees and parking fees in tourist places other than maintained by Indian Archaeological department or local departments.</p>	<p>1) Identifying the tourist places in Taluks and framing proposals for their development</p> <p>2) Encouraging tourism activities</p> <p>3) Providing basic infrastructure in tourist centres entrusted to Taluk Panchayats</p> <p>4) Developing Tourist Attraction Centres entrusted to TPs and maintaining them</p>	<p>1) Identifying the tourist places in Taluks and framing proposals for their development</p> <p>2) Framing District Tourism Policy and tourism activities</p> <p>3) Providing infrastructure in Tourist centres</p> <p>4) Starting tourism attractions and maintaining them</p> <p>5) Appointing Tourist Guides, Green Police, Watchmen, Lifesavers in the tourist centres of Taluk and collecting entry fees and parking fees in the tourist centres entrusted to them</p>
7	Small scale industries and Village Industries, Khadi, Handicraft, Art, Gramodyoga and food processing industries	<p>1) Encouragement of Gudi industries, Khadi industries, village industries, food processing industries and other non-agricultural activities</p> <p>2) Arranging Exhibition and Market facility</p> <p>3) Framing State Committees and All India Committees for Gudi industries, Khadi industries, village industries, food processing industries and implementing them</p> <p>4) Collecting information with regard to available raw material and Value-added products</p>	<p>1) Establishing giving assistance strategic plans to Gudi industries, Khadi industries, village industries, food processing industries and other non-agricultural activities</p> <p>2) Conducting Conference, Seminars, and training programmes</p> <p>3) Establishing small scale industries units</p> <p>4) Framing Self-employment schemes and implementing them</p> <p>5) Creating Accessory service centres General facility centres to GP clusters, or GP Groups</p> <p>6) Providing financial assistance to General Facility centres of cluster level.</p>	<p>1) Establishing system with regard to development of Gudi Industries development</p> <p>2) Conducting training programmes at GP and TP level, Providing Technical guidance, and related and relating things</p> <p>3) Establishing Training and Produce Centres and maintaining them</p> <p>4) Arranging Market system for Gudi Industries Khadi industries and Handicrafts</p> <p>5) Developing link system for implementing State Committees and All India Committees and Commissions with regard to developing village industries and Gudi Industries</p> <p>6) Conducting district level entrepreneurship programmes</p>

Sl. No	Subject	Grama Panchayat	Taluk Panchayat	Zilla Panchayat
		5) Conducting market survey and broadcasting information to general public 6) Encouraging food processing and Produce marketing activities.	7) Maintaining General Facility Centres at Block level or Hobli level.	7) Framing cooperative schemes for Khadi and Village industries and Food processing industries and implementing them. 8) Implementing Schemes of State Committees and All India Committees and Commissions with regard to development of village industries and Gudi industries
8	Rural Housing	1) Identifying houseless and site less people and migrant workers. 2) Participating in all Rural housing schemes including Fishermen housing schemes 3) Participating in implementation of housing upgradation scheme 4) Implementing seasonal facilities to seasonal migrant workers 5) Encouraging rural Housing Cooperative Societies 6) Identifying the government land and recommending to DC for site allocation or site reservation to houseless 7) Sanctioning rural Housing and Layout schemes as per the orders of Government	1) Implementation of housing schemes outside Gramatana and distributing sites 2) Adopting techniques of low-cost housing construction and informing them to GPs. 3) Providing Technical assistance and equipment to GPs 4) Encouraging Taluk level Housing cooperative societies.	1) Encouraging district level Housing Construction societies
9	Drinking water supply	1) Collecting information about water quality and scope and preparing programme regarding that. 2) Maintaining water supply schemes in GPs and monitoring them 3) Control, prevention and protection of water pollution 4) Maintenance of traditional drinking water sources	1) Preventing water pollution and controlling 2) Establishing Drinking water supply to GPs and maintaining them 3) Providing Equipment and Technical assistance to GPs for implementing drinking water supply schemes	1) Establishing Drinking water supply schemes or multi taluk drinking water supply schemes 2) Establishing drinking water testing laboratories 3) Providing financial assistance to TPS and GPs with regard to implementation of water supply schemes

Sl. No	Subject	Grama Panchayat	Taluk Panchayat	Zilla Panchayat
		5) Collection of water samples from drinking water sources for testing 6) Regular cleaning of drinking water sources 7) Providing water to houses and commercial establishments by collecting user fees 8) Establishing water treatment plants and maintaining them. 9) Providing assistance to authorities for ground water misuse.		
10	Town and Rural schemes and Public works (roads, Bridges, waterways and other linking ways)	1) Framing schemes for the following and construction and maintenance Footpaths Village Roads Bridges, culverts Buildings Drains Structures other than entrusted to National Highways, State Highways and MDR, local bodies or Government departments. 2) Establishing and maintaining the following: Shelters for travellers/ parking place for vehicles Playgrounds 3) Constructing all types of Burial grounds and graveyards and maintaining them. Framing rules regarding use of all GP level graveyards and burial grounds	1) Not in the control of any local authority or State Government or central Government GP level and TP level a) Roads Footpaths Taluk roads Bridges culverts Buildings Drains Not in the control of State or Central Government on local authority. 2) Maintaining Boats, Ferries and water ways in the GP jurisdiction under the control of TPs 3) Framing plans for High school buildings, Taluk Hospital and other Taluk level public institutions, constructing and maintaining them	1) Framing Schemes for all district roads passing through more than one taluk and relating to those taluks other than National Highways, State Highways and MRDS, Bridges, Culverts not in the control of any local authority or Government. 2) Providing technology to GPs and TPs with regard to building construction and maintenance 3) On request from GPs and TPs providing technical guidance and technology. 4) Establishing multi taluk level civil amenities like Markets, Playgrounds, Stadiums etc. and maintaining them

Sl. No	Subject	Grama Panchayat	Taluk Panchayat	Zilla Panchayat
		<p>4) Maintaining Boat, Ferry and water ways</p> <p>5) Maintaining rainwater drains</p> <p>6) Establishing community necessities like Bathing places, public markets etc</p> <p>7) Developing Residential areas</p> <p>8) Constructing residential layouts</p> <p>9) Preparing plans for construction of school buildings, Hospitals and other public institutions entrusted to GPs, constructing them and maintaining them</p> <p>10) Preparing comprehensive village development plan.</p>		
11	Rural Electrification/ Power and Fuel	<p>1) Providing streetlights in roads and public places and maintenance</p> <p>2) Framing schemes for small traditional and non-traditional power plants like roof solar plates, solar electricity, biogas, windmill, small hydropower plants out of GP funds, implementing and maintaining them and encouraging them</p> <p>3) Marketing excess non-traditional fuel to others</p> <p>4) Providing assistance to rural electrification by way of doing self-service to GPs.</p>	<p>1) Coordinating with Electric supply companies with a view to continuously supplying quality electricity on special occasions and main crop seasons</p> <p>2) Preparing plans for suitable strength traditional and non-traditional fuel plants, implementing, and maintaining them.</p> <p>3) Marketing traditional and non-traditional fuel to others</p>	<p>1) Preparing plans for suitable strength traditional and non-traditional fuel plants, implementing, and maintaining them</p> <p>Marketing traditional and non-traditional fuel to others</p>
12	Poverty alleviation	<p>1) Identifying the poor and implementing poverty alleviation programmes</p> <p>2) Identifying and selection of beneficiaries of all poverty alleviation programmes</p>	<p>1) Providing technical equipment to GPs with regard to implementation of poverty alleviation programmes</p> <p>2) Carrying out self-employment programmes at taluk level</p>	<p>1) Developing crafts of poor identified by GPs</p> <p>2) Conducting technical training programmes</p> <p>3) Framing employment guarantee programmes in partnership with GPs and implementing them</p> <p>4) Conducting job fairs</p>



Sl. No	Subject	Grama Panchayat	Taluk Panchayat	Zilla Panchayat
		3) Facilitating Grama Sabhas for selection of beneficiaries under various programmes of GP level 4) Planning, implementation, monitoring and distributing poverty alleviation programmes benefits 5) Providing infrastructure to self-employment programmes 6) Organising self-help groups and neighbouring groups and strengthening them 7) Analysing necessities of poverty alleviation 8) Preparing plans for self-employment and wage employment and implementing them. 9) Providing basic necessities under various schemes 10) Participating in craft development programmes and creating awareness in public encouragement in employment opportunities	3) Linking self-help groups in all individual and Government programmes	
13	Public distribution system	1) Maintaining distribution of food grains and other daily needs 2) Monitoring Public Distribution system and creating awareness about it. 3) Construction of Godowns and Rural Stockyards out of GP funds and maintaining them	1) Distributing essential stock	
14	Disaster Management	1) Conducting surveys to identify disaster prone areas	1) Giving training to GP and TP level maintenance staff in disaster management programmes.	1) Creating infrastructure essential for disaster management

Sl. No	Subject	Grama Panchayat	Taluk Panchayat	Zilla Panchayat
		2) Creating disaster management facility and maintaining them 3) Identifying Local and outside experts in disaster management 4) Providing compensation and loss compensation to disaster prone persons according to guidelines issued by Government out of GPs own fund		
15	Education (Primary and Secondary Education, Technical and vocational education, Adult and informal education)	1) Preparing plans for providing traditional and non-traditional Education at panchayats level and Monitoring 2) Sending proposals regarding opening of lower and upper primary schools to competent authority and obtaining sanctions. 3) Monitoring Government lower and upper primary school 4) Constructing buildings for Government lower and upper primary schools and maintaining them 5) Collecting details of children and updating the data 6) Implementing Literacy programmes, informal and non-informal educational programmes, giving encouragement to adult literacy 7) Maintaining quality control including Administration and Monitoring 8) Reviewing and Evaluation of Educational programmes at Grama Panchayat level	1) Encouraging adult education 2) Preparing plans for providing traditional and non-traditional Education at taluk level and Monitoring 3) Sending proposals regarding opening of higher primary schools to competent authority and obtaining sanctions. 4) Conducting Central and State sponsored programmes with regard to education 5) Constructing buildings for Government Primary and secondary schools and maintaining them 6) Providing necessary assistance like books, reading material, training inputs etc to schools at grama panchayat level. 7) Encouraging community education through youth clubs and Mahila Mandali 8) Preparing plans to start schools/ hostels for backward classes, Girls, Disabled and minority classes and maintaining them.	1) Preparing plans for providing traditional and non-traditional Education at district level and Monitoring 2) Sending proposals regarding opening of Higher secondary schools, PU colleges, ITI, Polytechnics to competent authority and obtaining sanctions 3) Establishing Government PU colleges, ITI, Polytechnic collages and maintaining them. 4) Preparing plans with respect to hostels coming under Zilla panchayats institutions 5) Coordinating Central and State sponsored educational programmes and reviewing and monitoring of educational programmes. 6) Arranging village handicraft and vocational training programmes 7) Providing technical inputs, material and Financial assistance to Grama panchayats and taluk panchayats 8) Providing hostels to PU students, providing vocational training to students, girls and disabled of backward classes, providing vocational and technical education to students of minority classes, preparing plans for adult education, and maintaining them.

Sl. No	Subject	Grama Panchayat	Taluk Panchayat	Zilla Panchayat
		<p>9) Monitoring higher secondary schools/ hostels of backward classes, Girls, Disabled and minority classes.</p> <p>10) Encouraging village handicrafts and giving them vocational training</p> <p>11) Ensuring full attendance in Primary and Upper Primary schools.</p>		<p>9) Appointing guest teachers to educational Institutions coming under the purview of Zilla panchayats.</p> <p>10) Establishing special schools and hostels for disabled children and maintaining them.</p> <p>11) Encouraging non-formal educational programmes</p>
16	Libraries	1) Maintaining GP level Libraries and monitoring them	<p>1) Framing schemes for establishing Taluk level libraries and monitoring them</p> <p>2) Upgradation of libraries</p>	1) Framing schemes with regard to establishing ZP level Libraries which are not coming under the control of other local bodies or Government and maintaining and monitoring
17	Sports and cultural activities	<p>1) Construction playgrounds and maintaining them</p> <p>2) Identifying Art and cultural programmes</p> <p>3) Protecting cultural programmes at GP level and reviving them</p> <p>4) Encouraging youth clubs</p> <p>5) Providing assistance to poor and destitute artists and giving protection to them</p> <p>6) Maintaining communal and religious harmony</p> <p>7) Construction of Cultural centres, Community centres, open theatres at GP and community level and maintaining them</p> <p>8) Conducting youth festivals at GP and community levels</p> <p>9) Giving life skill and leadership education and training to youths and</p>	<p>1) Encouraging rural crafts and vocational training</p> <p>2) Providing platform to exhibit their talent of cultural groups including youth</p> <p>3) Conducting youth fairs at taluk level</p> <p>4) Establishing youth centre at taluk level for youth</p> <p>5) Constructing playgrounds at taluk level and maintaining them.</p>	<p>1) Recording rural Art and cultural activities and recording crafts produces</p> <p>2) Protecting the almost extinct heritage and reviving it.</p> <p>3) Establishing cultural centres at District level and maintaining them. Conducting craft fairs</p> <p>4) conducting youth fairs at district level</p> <p>5) Monitoring sports schools at district level</p> <p>6) Started giving annual awards to GPs for performing best in protection in the field of Communal and religious harmony, Children, minority, women rights violation etc.</p>

Sl. No	Subject	Grama Panchayat	Taluk Panchayat	Zilla Panchayat
		Conducting entertainment programmes.		
18	Providing Market facility and conducting cattle fairs	1) Establishing public markets at GP level, providing facilities and maintaining them 2) Controlling cattle fairs and festivals and conducting them 3) Maintaining rural agricultural produces and craft produces and encouraging their marketing 4) Providing storage and cold storage facility for agricultural produces 5) Providing facilities to farmers for direct market and e-market for agricultural produces.	1) Establishing TP level Public markets and maintaining them 2) Framing rules regarding conducting cattle fairs, festivals etc 3) Creating basic infrastructure for Self-help groups and JLJs and encouraging marketing of their produces	1) Framing rules regarding conducting cattle fairs, festivals etc at state level
19	Public health (Hospitals, health including Public health and family welfare	1) Monitoring Indian Health facilities like Allopathic, Siddha, Yunani and Nature cure and Yoga at Grama Panchayati level 2) Sending proposals to competent authorities for establishing Health sub centres at GP level and obtaining sanction for them and providing health care facilities and monitoring them, providing hospitals 3) Implementing Family planning programmes at GP 4) Conducting vaccination and other immunity programmes 5) Providing licence to food and entertainment institutions 6) Killing street dogs	1) Submitting proposals to competent authority regarding establishing primary health centres and taluk hospitals and obtaining sanctions 2) Encouraging immunisation and vaccination programmes 3) Monitoring Primary health centres and taluk hospitals 4) Arranging continuous assistance to GPs for programmes of Health services and sanitation programmes. 5) Providing facilities to special groups, disabled and mentally retarded and opening centres for them 6) Monitoring Laboratories and disease exploration services at taluk level and providing them to GPs 7) Framing schemes regarding family welfare programmes at TP level and implementing them	1) Framing schemes with regard to providing both traditional and non-traditional public health facilities and maintaining them 2) Submitting proposals for establishing community health centres and district hospitals and obtaining sanction for them 3) Maintaining Community health centres and district hospitals which are outside the control of Government or any local authority 4) Obtaining Equipment, medicine etc for TP level, cluster level and GP level Health centres and supplying medical equipment and other medical items. 5) Establishing Pandemic disease controlling system and implementing them 6) Establishing taluk level laboratories and disease exploring services

Sl. No	Subject	Grama Panchayat	Taluk Panchayat	Zilla Panchayat
		<p>7) Preventing pandemic diseases and enforcing compensatory actions against them</p> <p>8) Monitoring Obstetrics and Children welfare centres</p> <p>9) Controlling sale of perishable food items like Meat, Fish and other foods</p>		<p>7) Implementing Obstetrics and child health programmes at district level and implementing and maintaining them</p> <p>8) Coordinating Centre and State sponsored programmes at district level</p> <p>9) Establishing Health service centres for disabled and mentally retarded</p> <p>10) Arranging family welfare programmes at district level and implementing them</p>
20	Sanitation	<p>1) Cleaning and protecting Public roads, drains, Ponds and other public places</p> <p>2) Establishing and maintaining Cemetery and Burial grounds</p> <p>3) Establishing Liquid waste management system and maintaining them</p> <p>4) Collecting, segregating and transporting solid waste to Multi village solid waste management plants</p> <p>5) Constructing Individual, Community toilet, bathrooms and Hygiene complexes and maintaining them</p> <p>6) Conducting GP level sanitation programmes including habitations, Public places and all local institutions and implementing them</p> <p>7) Developing Health and sanitation policies and implementing them</p>	<p>1) Encouraging Health and sanitation programmes in Fairs and festivals</p> <p>2) Establishing Multi village solid waste management systems and maintaining them</p> <p>3) Providing technical assistance to GPs</p>	<p>1) Mobilising district sanitation programmes</p> <p>2) Providing necessary assistance to GPs and TPs</p> <p>3) Framing District policies and exchanges and evaluating them</p>

Sl. No	Subject	Grama Panchayat	Taluk Panchayat	Zilla Panchayat
		<p>8) Disposing unclaimed dead bodies of animals and controlling skin processing and painting</p> <p>9) Implementing Sanitation and waste management programmes at GP level</p>		
21	Welfare of Women and child, Welfare of disabled and mentally retarded	<p>1) Participating in implementation and monitoring of Women and child welfare programmes</p> <p>2) Participating in Health and nutritional food programmes of school children and implementation and maintenance</p> <p>3) Encouraging getting assistance from local development agencies, Private agencies, self-help groups in women and child development and empowerment</p> <p>4) Submitting proposals to competent authority for establishing Anganawadi centres and obtaining sanction</p> <p>5) Monitoring anganawadies</p> <p>6) Sending beneficiaries list selected in grama sabhas under Pension to Widows, Aged persons, disabled, etc schemes to the respective departments</p> <p>7) Facilitating implementation of group insurance schemes to poor</p> <p>8) Participating in social welfare programmes for Disabled, mentally retarded, community groups outcasted etc and monitoring the implementation of the programmes.</p>	<p>1) Framing schemes at taluk level for comprehensive child development programmes, implementing and monitoring them</p> <p>2) Encouraging, implementing, and monitoring programmes with regard to development and empowerment of women and child at taluk level</p> <p>3) Encouraging school health and nutritional health programmes and monitoring them</p>	<p>1) Implementing programmes with regard to technical inputs</p> <p>2) Implementing programmes for women empowerment and child development</p> <p>3) Conducting School health and nutritional food programmes</p> <p>4) Running and maintaining post metric hostels, boys' hostels and orphanages</p>

Sl. No	Subject	Grama Panchayat	Taluk Panchayat	Zilla Panchayat
22	Scheduled caste, scheduled tribes and other backward classes	<ol style="list-style-type: none"> <li>1) Providing basic infrastructure in SC/ST colonies</li> <li>2) Providing educational assistance to SC/ST students out of panchayats own funds on priority basis</li> <li>3) Framing, implementing and coordinating Programmes creating awareness regarding law and other issues among weaker section of the society specially SC and ST</li> <li>4) Participating in welfare programmes of weaker sections and monitoring their implementation</li> <li>5) Planning establishment of hostels at GP level for SC, ST and backward classes and monitoring them</li> <li>6) Preventing community and traditional activities which are against a particular person or community</li> </ol>	<ol style="list-style-type: none"> <li>1) Framing schemes for establishment of hostels for SC/ST and backward classes at taluk level and maintaining them</li> <li>2) Framing schemes regarding establishing pre metric hostels and maintaining them</li> <li>3) Preventing community and traditional activities which are against a particular person or community</li> <li>4) Monitoring Old age pension, widow pension and disabled pension</li> <li>5) Social welfare programmes including Disabled, Mentally retarded and orphan's welfare</li> </ol>	<ol style="list-style-type: none"> <li>1) Preventing methods which are against certain person or community</li> <li>2) Monitoring and maintaining post metric hostels at district level</li> <li>3) Running vocational training programmes with regard to SC/ST and other backward classes</li> <li>4) Distributing grants, loans and grants in aid to individuals under schemes relating to welfare schemes of SC/ST and other backward classes</li> </ol>
23	Livestock breeding centres, Car, Auto rickshaw and bus stands, bullock cart stands construction and maintenance	Livestock breeding centre, community cattle feed centres, Rural bus stands, rickshaw stand, Taxi/auto stand, slaughterhouses and commercial complexes construction and maintenance	Car/Auto and Bus stands construction and maintenance	
24	Giving all types of certificates	No objection certificates for Mines and Geology, Electrification, Excise, Ecology, Land conversion, Home stay, Resorts, Bar and Restaurants, Hostels,		

Sl. No	Subject	Grama Panchayat	Taluk Panchayat	Zilla Panchayat
		Bars, Burial ground and crematorium etc., for licences		
25	Statistics maintenance	Collecting all statistics related to villages, preparing statements and updating	Collecting Taluk statistics	1) Collecting district statistics 2) Preparing and finalising district plans depending on taluk viewpoints
26.	Planning	Creating group of technical and subject experts for preparing long vision plans and annual plans	1) Accumulating plans received from GPs preparing TP level plans, receiving and creating taluk planning committee to submit it to ZP 2) Providing technicians help to GPs with regard to collection of statistics and information and framing schemes. 3) Monitoring the progress of all government programmes including Special component programme (SSP) and Tribal sub plan (TSP) and ensuring quality implementation.	1) Preparing district level plans 2) Accumulating plans received from TPs, preparing district level plans and forming committee for getting approval for district level plans. 3) Providing technicians help to TPs with regard to collection of statistics and information and framing schemes. 4) Monitoring the progress of all government programmes including Special component programme (SSP) and Tribal sub plan (TSP) and ensuring quality implementation. 5) Evaluating the schemes
27.	Cooperation	Preparing activities for strengthening and popularising cooperation programmes	Providing necessary facility to encourage all block and taluk level cooperating societies	Providing facilities to all district level cooperative societies
28	Rural Environment and ecology	1) Framing schemes for protecting Rural environment and ecology in accordance with national and state policies 2) Establishing ecology maintaining committees 3) Preparing ecology diversity register 4) Preparing schemes and activities for ecology Act 2002 and implementing them 5) Protecting environmentally sensitive areas 6) Preparing schemes		

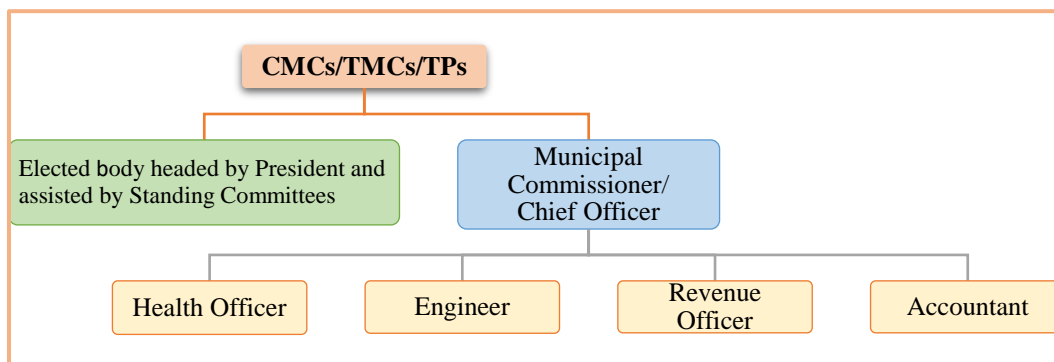
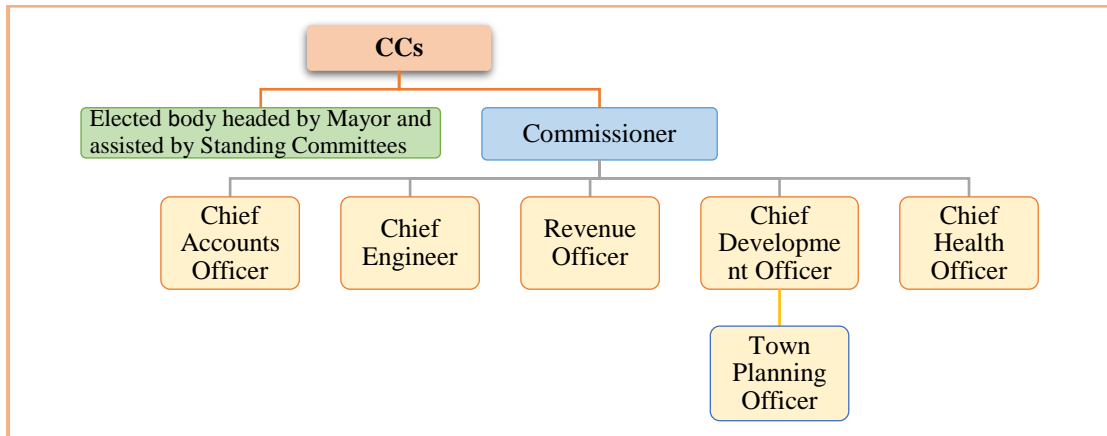
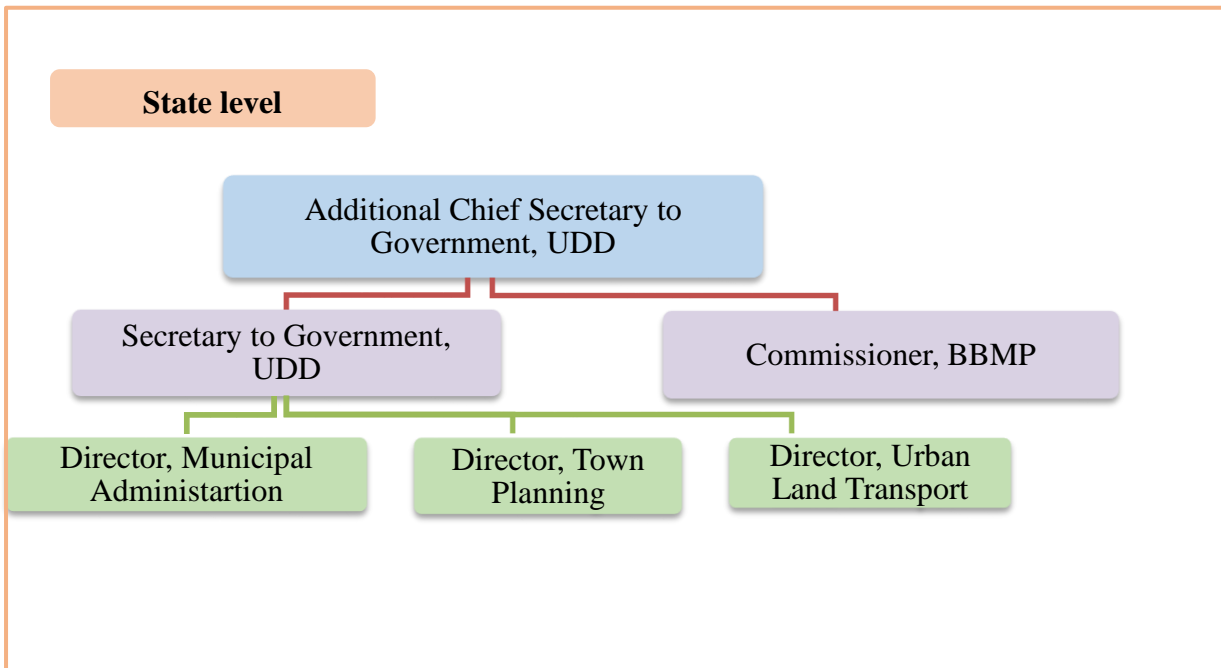


Sl. No	Subject	Grama Panchayat	Taluk Panchayat	Zilla Panchayat
		for protecting environment and implementing them. Maintaining parks 7) Controlling waste pits and controlling rural markets		
29	Revenue creating activities	Undertaking various revenue creation activities to mobilise own resources	Creating assets in Taluk centres and renting them	Creating assets in district centres and renting them out
30	Knowledge management	1) Collection of databases of families and database management 2) Recording village history, culture and heritage 3) Conducting village development reviews and studies 4) Calculating human resource development database 5) To make available database of all GP public 6) Creating awareness and Information, Education and link activities for all Government programmes.	1) Collecting statistic relating to Taluk's and maintaining database 2) Recording Taluk's history, culture and heritage 3) Conducting surveys and studies with regard to deciding taluk's human resource development. 4) Computation of human resource development index regularly 5) To make available general public all database 6) Creating awareness about Government programmes and conducting activities of information, Education and communication	1) Creating awareness regarding all Government activities and conducting activities of information, Education and communication 2) Collecting district statistics and maintaining database 3) Recording district's history, culture and heritage 4) Conducting surveys and studies with regard to deciding district's human resource development 5) Computation of human resource development index regularly 6) To make available general public all database
31	Community asset management	1) Protection and maintenance of community assets by GPs, their mapping, survey, recording and Maintenance 2) Tanks, water channels, agricultural pits, bore wells and other tanks, afforestation etc recording and protection	1) Maintaining all community assets transferred from Government or local authority in TP 2) Protecting and maintenance of other community assets	

**Appendix 1.3**  
**(Reference: Paragraph 1.12.1/ Page No.8)**  
**Details of SFC recommendations and modifications**

<b>SFC</b>	<b>Recommendations</b>	<b>Modifications</b>
Third	Devolution of 23 per cent of Net Own Revenue Receipts of the State to PRIs, de-linking salary component of officials working in PRIs.	32 per cent of Non-Loan Net Own Revenue Receipts (NLNORR) of the State to be assigned to PRIs this would be inclusive of salary expenditure
	Statutory development grants to be distributed to GPs in the following manner Category I (Population below 4000): ₹ 9 lakhs per GP per year. Category II (Population 4001 to 8000): ₹2 lakhs per GP per year. Category III (Population above 8000): ₹15 lakhs per GP per year.	Annual grants of ₹8 lakhs to be provided to each GP
Fourth	Devolution of 35 per cent of NLNORR of the State to PRIs	Funds to Local Bodies to be devolved from 43 per cent to 48 per cent of NLNORR in a phased manner from 2018-19 to 2022-23 and funds to ULBs also to be increased in a phased manner from 10.5 per cent to 12 per cent of NLNORR during the above period. Thus, leading to devolution of funds to PRIs in a phased manner from 32.5 to 36 per cent over the period of five years
	Allocation to ZP, TP & GP in ratio 38.61:53.64:7.76	To have flexibility in apportioning grants among various categories of PRIs which would best address the needs at each level as against the exact ratios prescribed in the recommendations.
	Enhancement of untied grants to GPs from ₹12 lakh minimum to ₹35 lakhs maximum per annum to all GPs based on their population and area	Grants ranging from ₹12 lakh minimum to ₹35 lakhs maximum per annum to all GPs based on their population and area from 2019-20 onwards

**Appendix 2.1**  
**(Reference: Paragraph 2.2/Page No.18)**  
**Organisational structure with respect to functioning of ULBs in the State**



**Appendix 2.2**

**(Reference: Paragraph 2.3/Page No.18)**

**List of 18 items under the Twelfth Schedule of the Indian Constitution**

1. Regulation of land use and construction of land buildings
2. Urban planning including the town planning
3. Planning for economic and social development
4. Urban poverty alleviation
5. Water supply for domestic, industrial and commercial purposes
6. Fire services
7. Public health sanitation, conservancy and solid waste management
8. Slum improvement and up-gradation
9. Safeguarding the interests of the weaker sections of society, including the physically handicapped and mentally unsound
10. Urban forestry, protection of environment and promotion of ecological aspects
11. Construction of roads and bridges
12. Provision of urban amenities and facilities such as parks, gardens and playgrounds
13. Promotion of cultural, educational and aesthetic aspects
14. Burials and burials grounds, cremation and cremation grounds and electric crematoriums
15. Cattle ponds, prevention of cruelty to animals
16. Regulation of slaughterhouses and tanneries
17. Public amenities including street lighting, parking spaces, bus stops and public conveniences
18. Vital statistics including registration of births and deaths

## Appendix 3.1

(Reference: Paragraph 3.6/ page No.39)

**List of observations included in Report of CAG on Local Bodies for the year ended March 2017 and in Annual Technical Inspection Report for the year ended March 2018****i) Report of CAG on Local Bodies for the year ended March 2017**

Education	Para 2.1	Inadmissible payment of special allowance
Education	Para 2.2	Unfruitful expenditure on construction of Block Education Officer's office building at Tumakuru
RDPR	Para 2.3	Unproductive investment on a water supply scheme
RDPR	Para 2.4	Unfruitful expenditure on multi village water supply scheme
Tribal welfare & RDPR	Para 2.5	Non-utilisation of funds for construction of pre-matric boy's hostel building for Scheduled Tribe students
Women & Child Development	Para 2.6	Non-utilisation of funds for construction of anganwadi centres
UDD	Para 4.1	Collection and Remittance of cesses in Urban Local Bodies
BBMP	Para 4.2	Avoidable payment of interest of ₹12.26 crore by BBMP due to delay in settlement of land compensation
BBMP	Para 4.3	BBMP lost revenue of ₹95.63 crore due to non-collection of urban transport cess during 2013-14 to 2016-17.
BBMP	Para 4.4	BBMP failed to adopt the applicable rates of service tax resulting in short levy/realisation of ground rent aggregating ₹57.58 lakh.
BBMP	Para 4.5	BBMP failed to ensure enrolment of film theatre owners as commercial advertisers and consequently did not collect enrolment/renewal fee resulting in loss of revenue of ₹29.89 lakh.
CC Shimoga	Para 4.6	City Corporation, Shivamogga, failed to initiate action to get the contract demand reduced in accordance with consumption and did not maintain power factor at the prescribed level resulting in avoidable payment of ₹46.32 lakh during 2013-14 to 2016-17.
TP Turuvekere	Para 4.7	Chief Officer, Town Panchayat, Turuvekere, released mobilisation advance to the contractor in excess of the amount specified in the agreement leading to undue benefit to the contractor and resultant cost escalation of ₹43.13 lakh

ii) **Annual Technical Inspection Report for the year ended March 2018**

GPs	Para 2.1	Diversion of cess amount by GPs during 2012-13 to 2016-17-₹1.32 crore
TP, Gangavathi	Para 2.2	Misuse/wastage of public funds ₹22.47 lakh
BBMP	Para 4.1	Avoidable payment of penal interest ₹20.07 crore
BBMP	Para 4.2	Loss of revenue due to incorrect assessment of property tax ₹6.72 crore
BBMP	Para 4.3	Loss of Revenue due to fraudulent issue of Trade Licences – ₹3.75 crore
CC, Kalaburagi CMC, Ramanagara TMCs  Harapanahalli Karkala Malavalli	Para 4.4	Avoidable payment due to non-variation of contract demand and non-maintenance of power factor ₹94.93 lakh
BBMP	Para 4.5	Loss of revenue due to non-recovery of additional ground rent ₹36.50 lakh
BBMP	Para 4.6	Loss of revenue due to short collection of improvement expenses ₹31.21 lakh

**Appendix 3.2**  
**(Reference: para 3.6.1/Page No.39)**  
**List of Test Checked Grama Panchayats**

Sl. No	District	Taluk	Grama Panchayat
1	CHITRADURGA	CHALLAKERE	MEERASABIHALLI
2	CHITRADURGA	CHITRADURGA	BHARAMASAGARA
3	CHITRADURGA	CHITRADURGA	SIRIGERE
4	CHITRADURGA	HIRIYUR	IKKANURU
5	CHITRADURGA	HIRIYUR	RANGENAHALLI
6	CHITRADURGA	HOLALKERE	CHIKKAJAJUR
7	CHITRADURGA	HOSDURGA	MATTODU
8	CHITRADURGA	HOSDURGA	SRIRAMPURA
9	CHITRADURGA	MOLAKALMURU	B.G.KERE
10	CHITRADURGA	MOLAKALMURU	RAMPURA
11	DAVANAGERE	DAVANAGERE	MALALAKERE
12	DAVANAGERE	DAVANAGERE	BELAVANUR
13	DAVANAGERE	HARAPANAHALLI	BENNIHALLI
14	DAVANAGERE	HARAPANAHALLI	HIREMEGALAGERE
15	DAVANAGERE	HARIHARA	BANNIKODU
16	DAVANAGERE	HARIHARA	BELLUDI
17	DAVANAGERE	HONNALI	ARABAGHATTE
18	DAVANAGERE	JAGALUR	DIDDIGI
19	DAVANAGERE	CHANNAGIRI	BASAVAPATTANA
20	DAVANAGERE	CHANNAGIRI	HONNEBAGHI
21	HASSAN	ALUR	MAGGE
22	HASSAN	ARKALGUD	KONANUR
23	HASSAN	ARKALGUD	RAMANATHAPURA
24	HASSAN	ARSIKERE	KACHIGATTA
25	HASSAN	BELUR	HALEBEEDU
26	HASSAN	CHANNARAYAPATNA	DINDAGOOR
27	HASSAN	HASSAN	DUDDA
28	HASSAN	HASSAN	MANACANAHALLI
29	HASSAN	SAKALESHPUR	BAAGE
30	HASSAN	HOLENARSIPUR	BAAGIBALU
31	HAVERI	BYADGI	MALLUR
32	HAVERI	HANAGAL	BAICHAVALLI
33	HAVERI	HAVERI	DEVIHOSUR
34	HAVERI	HAVERI	KARJAGI
35	HAVERI	HIREKERUR	ABALUR
36	HAVERI	HIREKERUR	KANAVISIDDAGERI
37	HAVERI	RANEBENNUR	HONNATTI
38	HAVERI	RANEBENNUR	RAHUTANAKATTI
39	HAVERI	SAVANUR	KADAKOL
40	HAVERI	SHIGGAON	TADAS
41	KODAGU	MADIKERI	BHAGAMANDALA

Sl. No	District	Taluk	Grama Panchayat
42	KODAGU	MADIKERI	HODDURU
43	KODAGU	MADIKERI	KANTURU MARNADU
44	KODAGU	MADIKERI	NAPOKLU
45	KODAGU	SOMVARPET	BETTADALLI
46	KODAGU	SOMVARPET	KUDUMANGALORE
47	KODAGU	SOMVARPET	MULLUSOGE
48	KODAGU	VIRAJPET	BITTANGALA
49	KODAGU	VIRAJPET	KUTTA
50	KODAGU	VIRAJPET	NALKERI
51	BELAGAVI	ATHNI	BADACHI
52	BELAGAVI	BAILAHONGAL	DODAVAD
53	BELAGAVI	BELAGAVI	KANGRALI BK
54	BELAGAVI	CHIKKODI	ANKALI
55	BELAGAVI	CHIKKODI	KHADAKALAT
56	BELAGAVI	GOKAK	BALOBAL
57	BELAGAVI	KHANAPUR	GANDIGAWAD
58	BELAGAVI	KHANAPUR	JAMBOTI
59	BELAGAVI	RAYBAG	KUDACHI (RURAL)
60	BELAGAVI	SAVADATTI	MADAMAGERI
61	UTTARA KANNADA	ANKOLA	ACHAVE
62	UTTARA KANNADA	ANKOLA	BELASE
63	UTTARA KANNADA	BHATKAL	BENGRE
64	UTTARA KANNADA	HALIYAL	TATWANAGI
65	UTTARA KANNADA	KUMTA	GOKARNA
66	UTTARA KANNADA	KUMTA	HEGDE
67	UTTARA KANNADA	KUMTA	VALAGALLI
68	UTTARA KANNADA	MUNDGOD	CHIGALLI
69	UTTARA KANNADA	SIRSI	BANAVASI
70	UTTARA KANNADA	YELLAPUR	IDAGUNDI
71	BENGALURU	ANEKAL	HENNAGARA
72	BENGALURU	ANEKAL	KALLUBALU
73	BENGALURU	ANEKAL	NERALURU
74	BENGALURU	BENGALURU EAST	DODDAGUBBI
75	BENGALURU	BENGALURU NORTH	ARAKERE
76	BENGALURU	BENGALURU NORTH	DODDA JAALA
77	BENGALURU	BENGALURU NORTH	MAADANAAYAKANA HALLI
78	BENGALURU	BENGALURU NORTH	RAJAANU KUNTE
79	BENGALURU	BENGALURU NORTH	SOMASHETTIHALLI
80	BENGALURU	BENGALURU SOUTH	KONAPPANA AGRAHAARA



**Appendix 3.3**  
**(Reference to Para No. 3.6.1/Page No.39)**  
**Irregularities in purchase of Cement**

Name of the Dealer	Invoice No	Particulars	Bill No/Date	Cheq No/Date	Amount (₹)
M/S Deeksha Enterprises	01	Cement (Bag) QTY- 184X679.5=125028	02/22.07.2017	502090/22.07.2017	1,25,028
	06	Cement (Bag) QTY- 133X675.6=89858	04/22.07.2017	502092/22.07.2017	89,858
	07	Cement (Bag) QTY- 133X675=89856	05/20.07.2017	502093/22.07.2017	89,856
	03	Cement (Bag) QTY- 133X675=89855	08/21.07.2017	502096/22.07.2017	89,855
	04	Cement (Bag) QTY- 133X675.6=89858	06/20.07.2017	502094/22.07.2017	89,858
	05	Cement (Bag) QTY- 133X675.6=89858	09/21.07.2017	502097/22.07.2017	89,858
	08	Cement (Bag) QTY- 133X675=89856	07/21.07.2017	502095/22.07.2017	89,856
<b>Total</b>					<b>6,64,169</b>

**Appendix 3.4**  
**(Reference to Para No. 3.6.1/Page No.40)**  
**Irregularities in purchase of LED lamps**

Name of the Dealer	Invoice No	Particulars	Quantity	Bill No/Date	Cheque No/Date	Amount (₹)
M/S Deeksha Enterprises	52	LED Street light, Pipe	10	01/20.06.2017	502089/04.07.2017	87,200
	53	LED Street light, Pipe	10	01/20.06.2017	502089/04.07.2017	87,200
	54	LED Street light, Pipe	10	01/20.06.2017	502089/04.07.2017	87,200
	55	LED Street light, Pipe	10	01/20.06.2017	502089/04.07.2017	87,200
	481	LED Light	10	09.02.2017	502078	89,880
	485	LED Light	10	22.02.2017	502082/22.02.2017	84,000
	525	LED Light	10	12.02.2017	502086/17.02.2017	74,950
	527	LED Light	10	11.02.2017	502085/17.02.2017	74,950
	528	LED Light	10	12.08.2017	505087/17.02.2017	74,950
<b>Total</b>						<b>7,47,530</b>

**Appendix 3.5**  
**(Reference: para 3.6.2/Page No.40)**  
**List of Institutions audited under TGS Module**

<b>Sl. No.</b>	<b>Institutions</b>
1	City Corporation, Tumkuru
2	City Municipal Council, Challakere
3	City Municipal Council, Gadag-Betageri
4	City Municipal Council, Kollegal
5	City Municipal Council, Hebbagodi
6	Town Municipal Council, H D Kote
7	Town Municipal Council, Jewargi
8	Town Municipal Council, Kadur
9	Town Municipal Council, Nargund
10	Town Panchayat, Tarikere
11	Town Panchayat, Alnavara
12	Town Panchayat, Holalkere
13	Town Panchayat, Nidagundi
14	Town Panchayat, Yelburga