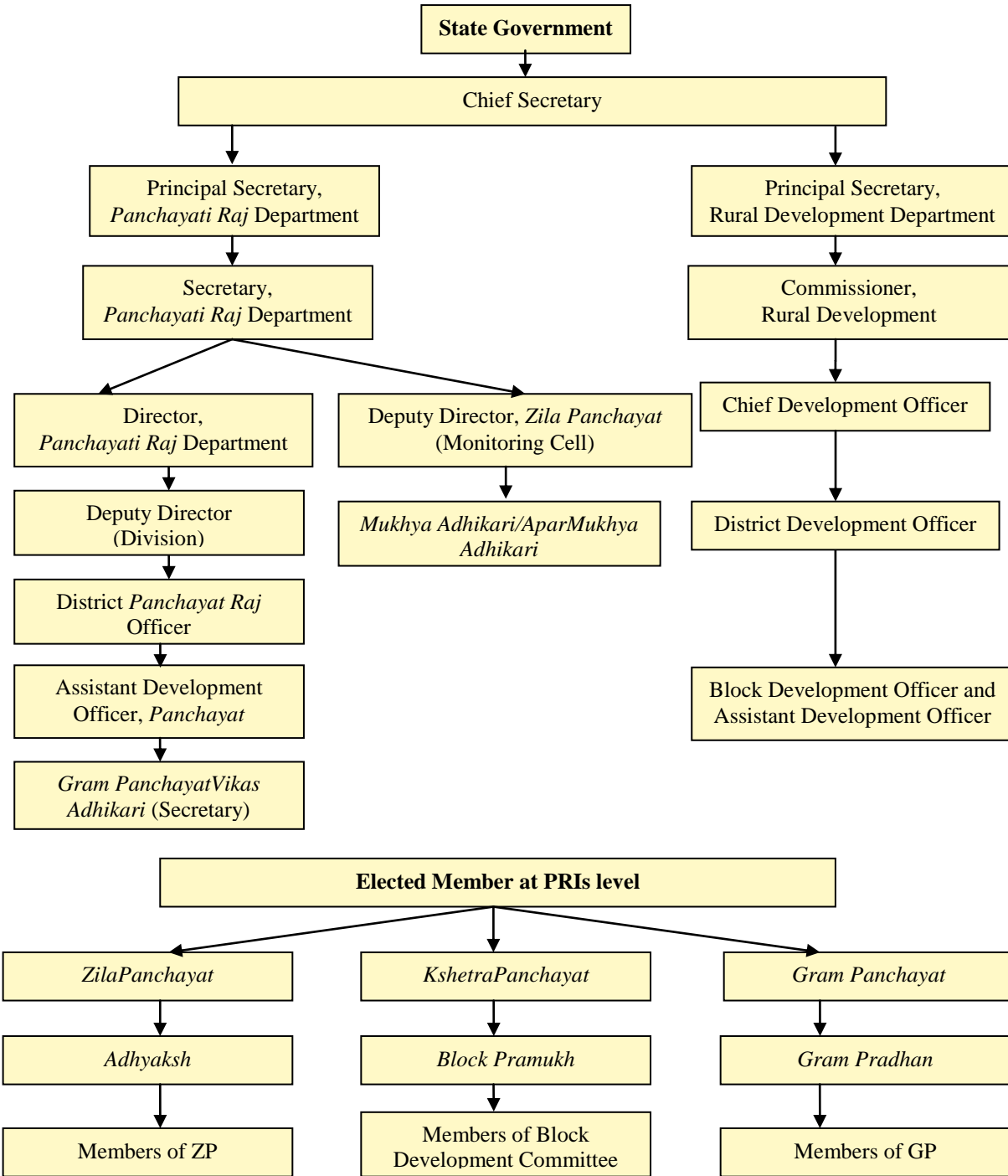


## Appendix 1.1

### Organisational structure of *Panchayati Raj* Institutions

(Reference: Paragraph no.1.2 and 2.2; page 2 and 17)



(Source: Director, Panchayati Raj, Uttar Pradesh)

## Appendix 1.2

### Eleventh Schedule: List of 29 Subjects

(Reference: Paragraph no. 1.3.1; page 2)

1. Agriculture, including agricultural extension.
2. Land improvement, implementation of land reforms, land consolidation and soil conservation.
3. Minor irrigation, water management and watershed development.
4. Animal husbandry, dairying and poultry.
5. Fisheries.
6. Social forestry and farm forestry.
7. Minor forest produce.
8. Small scale industries, including food processing industries.
9. Khadi, village and cottage industries.
10. Rural housing.
11. Drinking water.
12. Fuel and fodder.
13. Roads, culverts, bridges, ferries, waterways and other means of communication.
14. Rural electrification, including distribution of electricity.
15. Non-conventional energy sources.
16. Poverty alleviation programme.
17. Education, including primary and secondary schools.
18. Technical training and vocational education.
19. Adult and non-formal education.
20. Libraries.
21. Cultural activities.
22. Markets and fairs.
23. Health and sanitation including hospitals, primary health centres and dispensaries.
24. Family welfare.
25. Women welfare and child development.
26. Social welfare including welfare of the handicapped and mentally retarded.
27. Welfare of the weaker sections including welfare of Scheduled Castes and Scheduled Tribes.
28. Public distribution system.
29. Maintenance of community assets.

(Source: Constitution of India)

## Appendix 1.3

### Status of transfer of functions to *Panchayati Raj* Institutions

(Reference: Paragraph no. 1.3.1; page 2)

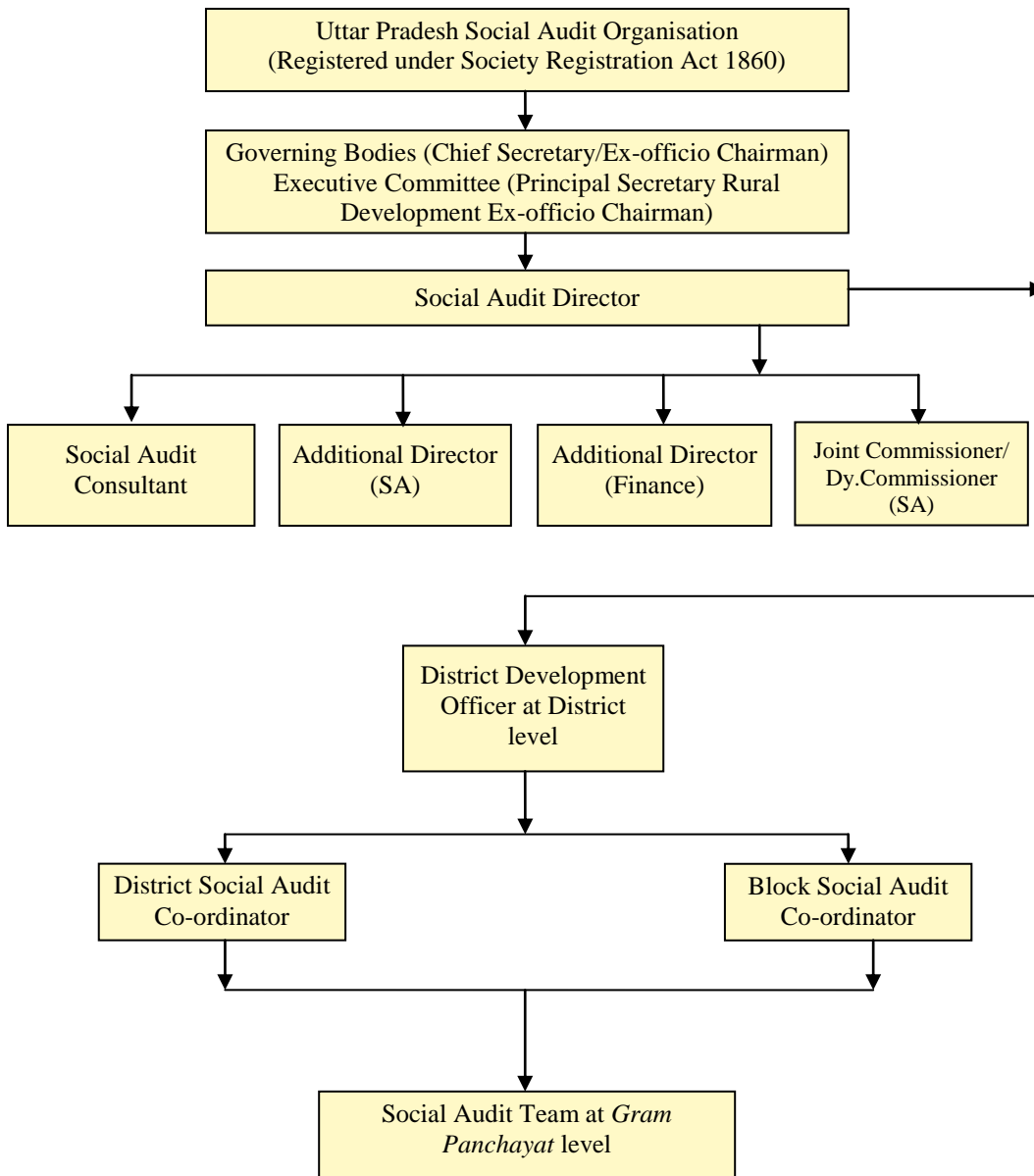
Sl. No.	Devolution of Functions
1.	Operation & Maintenance of Rural Water Supply schemes.
2.	Poverty alleviation programmes.
3.	Basic education including mid-day meal.
4.	Operation and Maintenance of rural market and fairs.
5.	Rural Sanitation Programme.
6.	Maintenance and supervision of 'D' category Veterinary Hospitals.
7.	Welfare programme for SC, ST and Other weaker sections – selection of pensioners and distribution of scholarships.
8.	Food and Civil Supplies – supervision of Public Distribution System (PDS) throughout the state including <i>Jan Kerosene</i> Programme.
9.	Maintenance of assets created in <i>Panchayat</i> area.
10.	Rural library.
11.	Youth Welfare programme at village level.
12.	Rural Housing schemes – selection of beneficiaries.
13.	Verification of inspection notes of CMOs & Dy. CMOs of CHCs & PHCs respectively, by <i>Pramukhs</i> and <i>Pradhans</i> of KPs and GPs respectively.
14.	Minor irrigation – selection of beneficiaries.
15.	Maintenance of assets created under sodic land Reclamation Projects.
16.	Maintenance of seed stores, etc. to KP.

(Source: Director, *Panchayati Raj*, Uttar Pradesh)

## Appendix 1.4

### Functioning of Social Audit Unit

(Reference: Paragraph no. 1.8; page 7)

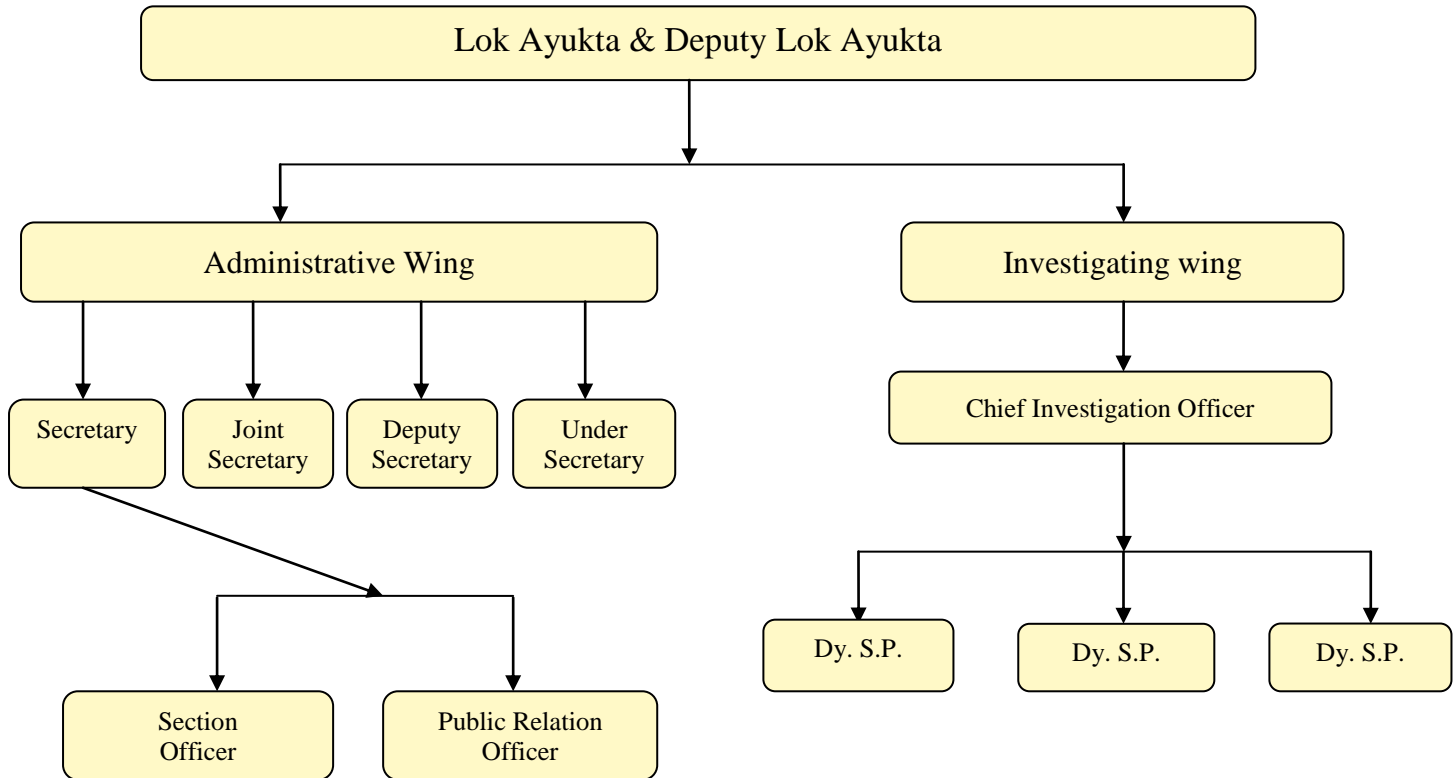


(Source: Director, Social Audit)

## Appendix 1.5

### Graphical structure of office of the Lok Ayukta in the State

(Reference: Paragraph no. 1.9; page 7)



(Source: Lok Ayukta UP, Lucknow)

## Appendix 1.6

### Details of difference in figures

(Reference: Paragraph no.1.11.1.2; page 11)

(₹ in crore)

Central Finance Commission (CFC)			
Year	Figure given in respective years by Director, Panchayati Raj	Figure given for 2011-16 in March 2017 by Director, <i>Panchayati Raj</i> and Figure given by Special Secretary Finance Department	Difference (Col 2 – Col 3)
1	2	3	4
2011-12	1,473.51	1,672.27	(-)198.76
2012-13	1,498.45	2,376.64	(-)878.19
2013-14	3,408.67	2,742.07	(+)666.60
2014-15	2,048.65	2,121.81	(-)73.16
2015-16	3,852.60	3,852.60	0

(₹ in crore)

State Finance Commission(SFC)					
Year	Figure given in respective years by Director, Panchayati Raj (GoUP)	Figure given for 2011-16 in March 2017 by Director, Panchayati Raj (GoUP)	Difference (Col 2 – Col 3)	Figure given by Special Secretary Finance Department (GoUP)	Difference in the figures of Director, <i>Panchayati Raj</i> and Special Secretary Finance Department (GoUP) (Col 3 – Col 5)
1	2	3	4	5	6
2011-12	2,172.38	2,192.10	(-)19.72	2,511.68	(-)319.58
2012-13	2,455.04	2,477.33	(-)22.29	2,772.18	(-)294.85
2013-14	3,544.81	3,901.68	(-)356.80	3,250.00	(+)651.68
2014-15	4,390.18	4,390.18	0	3,850.00	(+)540.18
2015-16	4,070.65	4,070.65	0	4,070.65	0

(Source: Director, *Panchayati Raj* and Finance Department, GoUP)

## Appendix 2.1

### List of sampled units

(Reference: Paragraph no. 2.5; page 18)

Sl. No.	Name of Zila Panchayats	Name of Blocks	Name of Gram Panchayats
1.	Agra	Achhner	Atus, Gadi Candarman, Khera Bakanda, Mubarikpur, Sakatpur
		Etmadpur	Agwar, Chirhauli, Mukhwar, Saifuddinpur
		Khandauli	Bailoth, Hasanpur, Naharra, Semra
2.	Ambedkar Nagar	Baskhari	Baniyani, Chhangurpur Mishrauliya, Faridpur Saifan, Jallpur Sabukpur, Mohammadpur Musalman, Oujhipur, Semur Khanpur
		Kathari	Angwal, Baramadpur Jariyari, Chiutipara, Hardopur, Kharagpur, Manshapur, Nasirpur, Raghunathpur, Semri
3.	Bulandshahar	Augusta	Auguta, Dalpatpur Mukteshwara, Kajeepura, Manpur, Saimlee
		Gulaothi	Aashfabad Chandpura, Chirawak, Maholi
		Sikarpur	Aunchroo Kala, Dargahpur Basouli, Hurthla, Khakhoda, Nagla Lutph alipur, Sarava
4.	Jaunpur	Baksha	Babura, Bhairapur, Chhangapur, Gadhaseni, Kalinjara, Mai, Puraheму, Saraytriloki,
		Karanjakala	Bagmiya, Chhunchha, Hamjapur, Jangipur Kala, Kharauna, Lalmanpur, Newada Ishwarisingh, Sahdaudpur Urf Kakorgahana, Vishambhara Urf Jamunipur
		Mariyahun	Ahamadpur, Bhulaipur, Gauhar, Kailawar, Kurani, Manipur, Pahsana, Rampurnaddi, Sudanipur
		Shahganj	Aflepur, Atraura, Chakraj Sahawe, Guraini, Kayar, Lateefpur 1, Mawai, Porai Khurd, Sethuwapara
5.	Mathura	Baldeo	Aagai, Daggheta, Islampur, Madora, Patloni
		Mathura	Aduki, Bati, Dhorera, Junsati, Maholi, Narholi, Satoha
6.	Sambhal	Baniakhera	Akberpur Chitori, Baniyakhera, Chidiya Bhawan, Jarauli Hayatnagar, Kokawas, Moh. Saadikpur, Naveni Udaya, Raholi, Shyamshingh Bhoodi
		Rajpura	Baybhood, Chaupur Danda, Harphari, Kesharpur, Mukutpur, Rjawali, Sikandarpur Khagi
7.	Shravasti	Gilaula	Auraiya Tikai, Chandarkha Bujurg, Gilaula, Kakandhu, Kort Mubarak, Nibabhari, Ranipur Kaji
		Jamunaha	Bahorawa, Chamarpurwa, Fatehpur Bangai, Jhirjhirwa, Laxmanpur Gangapur, Parsohana, Sehariya
8.	Siddharth Nagar	Bhanwapur	Andua Shnichara, Beshkoher, Chaukhada, Gadawer, Judi Kueya, Mahtinia Bujurg, Pandia, Ramwapur Raut, Shohna
		Jogia Khas	Baijnatha, Devra Bazar, Jakhaulia, .Khetwal Tiwari, Nadwalia, Sabui-Sabua,
		Nawgarh	Basauni, Durjanpur, Khaleelpur, Mahdeva lala, Rasoolpur, Sonwal (6)
9.	Sonebhadra	Babhani	Arjaht, Chainpur, Hathiyar
		Ghorawal	Amaur, Barwan, Dewrikath, Gurawal, Kaneti, Khurawan, Lohandi, Morahi, Parsauna, Sarnga, Sirsiyathakurai
10.	Unnao	Auras	Ahamdpur Kashimpur, Bisaval, Gohali, Khadval, Nandauli, Sahpur Tonda
		Ganj Moradabad	Atva, Bhikhanpur Gopalpur, Esamailpur Ambalpara, Jafarabad, Khairahan, Raneepurgarnt
		Purwa	Bahraora Bujurag, Chimiyan, Lakhmandemau, Navav, Taragharia

## Appendix 2.2

### ZP wise details of assessment, realisation and balance of CP tax (2011-16)

(Reference: Paragraph no. 2.7.1.1; page 20)

(₹in lakh)

Sl. No.	Name of ZP	Opening balance	Revenue Assessed	Total	Revenue realization (per cent)	Balance
1.	Agra	0.00	4.67	4.67	4.67 (100)	0.00
2.	Ambedkar Nagar	26.10	123.96	150.06	129.85 (87)	20.21
3.	Bulandshahar	9.41	132.51	141.92	138.47 (98)	03.45
4.	Jaunpur	0.00	0.00	0.00	0.00	0.00
5.	Mathura	0.00	23.09	23.09	19.75 (86)	3.34
6.	Sambhal	67.63	50.00	117.63	36.93 (31)	80.70
7.	Shravasti	9.70	46.97	56.67	50.66 (89)	6.01
8.	Sidharth Nagar	21.67	106.00	127.67	105.34 (82)	22.33
9.	Sonbhadra	229.64	110.79	340.43	74.46 (22)	265.97
10	Unnao	14.06	84.99	99.05	63.24 (64)	35.81
<b>Total</b>		<b>378.21</b>	<b>682.98</b>	<b>1061.19</b>	<b>623.37</b>	<b>437.82</b>

Note: The Tax in ZP Agra was effective from 2013-14 and the same for the year 2014-15 was not recovered as of August 2016. In ZP, Jaunpur, the CP tax was not enforced. The Tax for 2014-16 was not recovered in ZP Mathura as of June 2016.  
(Source: Concerned ZP)



## Appendix 2.3

### Resource, expenditure and balance of test checked KPs (2011-16)

(Reference: Paragraph no. 1.10, 2.7.1.2, 2.7.2.2 and 2.7.2.3; page 8,25,28 and 32)

(₹ in lakh)

Sl. No.	Name of District	Name of KP	O.B.	Own revenue	C.F.C.	S.F.C.	Interest	Total	Expenditure	Balance
1	Agra	Achhnera	0.08	0	146.69	149.18	1.33	297.28	264.24	33.04
2		Etmadpur	3.77	0	126.13	127.41	3.47	260.78	223.73	37.05
3		Khandauli	9.72	0	126.35	208.31	4.84	349.22	321.43	27.79
4	Ambedkar Nagar	Baskhari	23.65	0	112.10	268.68	0.54	404.97	403.17	1.80
5		Kathari	13.65	0	284.53	181.98	0.00	480.16	393.61	86.55
6	Bulandshahar	Auguta	19.50	0	54.65	125.41	6.70	206.26	182.27	23.99
7		Gulaothi	6.16	0	51.99	104.90	3.15	166.20	137.89	28.31
8		Sikarpur	18.87	0	50.81	209.72	7.90	287.30	256.12	31.18
9	Jaunpur	Baksha	44.86	0	109.37	243.05	9.95	407.23	366.84	40.39
10		Karanjakala	14.21	0	114.37	262.06	7.43	398.07	372.75	25.32
11		Mariyahun	15.14	0	160.51	207.26	0.00	382.91	339.52	43.39
12		Shahganj	21.84	0	141.46	344.85	5.92	514.07	464.39	49.68
13	Mathura	Baldeo	11.22	0	88.31	223.89	3.68	327.10	266.77	60.33
14		Mathura	8.50	0	156.30	380.31	4.01	549.12	440.47	108.65
15	Sambhal	Baniakhera	42.86	0	185.60	267.84	15.80	512.21	481.38	30.72
16		Rajpura	26.50	0	73.37	227.33	0.92	328.12	293.92	34.20
17	Shravasti	Gilaula	0.26	0	0	519.99	3.87	524.12	468.67	55.45
18		Jamunaha	22.48	0	0	508.01	9.84	540.33	481.98	58.35
19	Siddharth Nagar	Bhanwapur	0.76	0	326.67	65.44	6.25	399.12	376.59	23.53
20		Jogia Khas	5.26	0	92.05	161.54	2.05	260.90	248.91	11.99
21		Nawgarh	10.77	0	89.09	203.19	9.54	312.59	298.95	13.64
22	Sonbhadra	Babhani	9.28	0	75.67	147.48	5.04	237.47	165.34	72.23
23		Ghorawal	35.81	0	182.00	374.43	12.78	605.02	543.37	61.65
24	Unnao	Auraas	71.48	0	0	223.73	13.92	309.13	264.93	44.20
25		Ganj Moradabad	6.78	0	83.05	165.91	4.97	260.71	230.56	30.15
26		Purwa	9.04	0	67.72	144.84	6.67	228.27	205.32	22.95
<b>Total</b>			<b>452.45</b>	<b>0</b>	<b>2,898.79</b>	<b>6,046.74</b>	<b>150.57</b>	<b>9,548.66</b>	<b>8,493.12</b>	<b>1,056.53</b>

(Source: Concerned KPs)

## Appendix 2.4

### Financial status of GPs (2011-16)

(Reference: Paragraph. no. 1.10, 2.7.1.3 and 2.7.2.3; page 8,25 and 33)

(₹ in lakh)

Sl. No.	Name of District	Name of KP	Name of GP	OB	Receipt	Int.	Total	Exp.	CB
1	Agra	Achhnera	Atus	3.83	39.87	0.25	43.95	39.53	4.42
2			Gadi Candarman	2.25	27.02	0.4	29.67	24.51	5.16
3			KheraBakanda	1.96	40.14	0.26	42.36	35.14	7.22
4			Mubarikpur	0.01	28.7	0.26	28.97	23.86	5.11
5			Sakatpur	1.92	22.34	0.14	24.4	19.99	4.41
6		Etmadpur	Agwar	6.19	82.31	0.37	88.87	72.75	16.12
7			Chirhauili	0.25	42.3	0.25	42.8	35.6	7.2
8			Mukhwar	5.12	62.84	0.3	68.26	55.82	12.44
9			Saifuddinpur	1.36	20.37	0.3	22.03	17.92	4.11
10		Khandauli	Bailoth	1.07	18.55	0	19.62	16.04	3.58
11			Hasanpur	0.46	32.87	0.16	33.49	28.84	4.65
12			Naharra	0.4	79.07	0	79.47	63.95	15.52
13			Semra	5.9	244.47	1.37	251.74	212.07	39.67
<b>Total</b>				<b>30.72</b>	<b>740.85</b>	<b>4.06</b>	<b>775.63</b>	<b>646.02</b>	<b>129.61</b>
14	Ambedkar Nagar	Baskhari	Baniyani	2.05	32.49	0.35	34.89	30.53	4.36
15			Chhangupur Mishrauliya	0.41	25.65	0.05	26.11	22.51	3.60
16			Faridpur Saifan	0.45	27.06	0.15	27.66	25.61	2.05
17			Jallpur Sabukpur	0.71	41.43	0.14	42.28	36.04	6.24
18			Mohammadpur Musalman	0.44	27.35	0.11	27.90	22.36	5.54
19			Oujhipur	0.48	31.15	0.15	31.78	26.57	5.21
20			Semur Khanpur	0.71	43.25	0.61	44.57	37.20	7.37
21			Kathari	Baramadpur Jariyari	0.46	50.73	0.45	51.64	44.39
22		Chiutipara		0.47	41.64	0.41	42.52	36.48	6.04
23		Hardopur		1.55	24.76	0.22	26.53	23.20	3.33
24		Kharagpur		2.40	24.32	0.38	27.10	24.68	2.42
25		Manshapur		0.59	35.17	0.87	36.63	29.52	7.11
26		Nasirpur		2.65	29.21	0.08	31.94	27.79	4.15
27		Raghunathpur		0.43	31.09	0.14	31.66	30.47	1.19
28	Semri	0.72	44.66	0.14	45.52	40.29	5.23		
<b>Total</b>				<b>14.52</b>	<b>509.96</b>	<b>4.25</b>	<b>528.73</b>	<b>457.64</b>	<b>71.09</b>
29	Bulandshahar	Agauta	Agauta	4.48	41.84	1.20	47.52	42.28	5.24
30			Dalpatpur Mukteshwara	1.85	18.16	0.16	20.17	20.09	0.08
31			Kajeepura	2.96	46.61	0.50	50.07	40.56	9.51
32			Manpur	1.37	13.31	0.10	14.78	12.02	2.76
33			Saimlee	1.63	19.30	0.27	21.20	17.17	4.03
34		Gulaothi	Aashfabad Chandpura	1.04	35.20	0.18	36.42	28.32	8.10
35			Chirawak	2.11	57.76	0.19	60.06	51.23	8.83
36			Maholi	1.41	34.54	0.13	36.08	29.63	6.45
37		Sikarpur	Aunchrookalan	1.52	23.75	0.52	25.79	21.34	4.45

38			Dargahpur Basouti	2.24	21.21	0.27	23.72	20.09	3.63	
39			Hurthla	0.67	32.58	0.28	33.53	25.93	7.60	
40			Khakhooda	4.36	37.03	0.61	42.00	35.69	6.31	
41			Nagla Lutphalipur	0.80	17.42	0.10	18.32	15.71	2.61	
42			Sarava	4.73	48.89	0.61	54.23	45.34	8.89	
<b>Total</b>				<b>31.17</b>	<b>447.60</b>	<b>5.12</b>	<b>483.89</b>	<b>405.40</b>	<b>78.49</b>	
43	Jaunpur	Baksha	Babura	0.90	26.67	0.55	28.12	23.90	4.22	
44			Bhairopur	1.08	23.06	0.34	24.48	21.00	3.48	
45			Chhangapur	3.15	38.44	0.78	42.37	37.53	4.84	
46			Gadhaseni	1.50	28.15	1.04	30.69	26.82	3.87	
47			Kalinjara	1.57	29.99	0.42	31.98	26.76	5.22	
48			Mai	1.99	38.20	0.23	40.42	34.88	5.54	
49			Purahemu	0.51	23.16	0.27	23.94	21.45	2.49	
50			Saraytriloki	0.84	48.96	0.20	50.00	45.48	4.52	
51			Karanjakala	Bagmiya	3.50	43.02	0.63	47.15	41.78	5.37
52				Chhunchha	2.01	33.39	0.20	35.60	30.94	4.66
53		Hamjapur		4.30	55.88	0.35	60.53	52.19	8.34	
54		Jangipur-Kala		2.94	37.97	0.43	41.34	37.62	3.72	
55		Kharauna		5.30	44.66	0.83	50.79	41.84	8.95	
56		Lalmanpur		0.71	22.50	0.25	23.46	19.92	3.54	
57		Newada-Ishwarisingh		1.66	30.16	0.32	32.14	27.55	4.59	
58		Sahdaudpur Urf Kakorgahana		3.10	52.11	0.57	55.78	50.17	5.61	
59		Vishambhara Urf Jamunipur		3.02	37.16	1.31	41.49	31.74	9.75	
60		Mariyahun		Ahamadpur	1.29	34.17	0.36	35.82	31.65	4.17
61			Bhulaipur	0.32	22.25	0.01	22.58	17.83	4.75	
62			Gauhar	0.29	41.45	0.00	41.74	38.13	3.61	
63			Kailawar	0.87	17.66	0.30	18.83	15.40	3.43	
64			Kurani	1.77	46.95	0.38	49.10	42.13	6.97	
65			Manipur	1.04	28.11	0.13	29.28	25.30	3.98	
66			Pahsana	0.52	23.82	0.27	24.61	21.40	3.21	
67			Rampurnaddi	4.84	77.02	0.00	81.86	71.69	10.17	
68			Shahganj	Atraura	1.07	19.07	0.09	20.23	18.31	1.92
69				Chakraj-Sahawe	1.68	29.63	0.23	31.54	27.19	4.35
70		Guraini		0.62	26.18	0.08	26.88	24.27	2.61	
71		Kayar		2.02	31.36	0.43	33.81	29.35	4.46	
72		Lateefpur-1		0.78	27.88	0.41	29.07	24.72	4.35	
73		Mawai		0.57	28.06	0.11	28.74	25.29	3.45	
74		Porai-Khurd		2.58	43.07	0.24	45.89	43.80	2.09	
75		Sethuwapara		1.50	23.64	0.30	25.44	21.74	3.70	
<b>Total</b>				<b>59.84</b>	<b>1,133.80</b>	<b>12.06</b>	<b>1,205.70</b>	<b>1,049.77</b>	<b>155.93</b>	
76	Mathura	Baldeo	Aagai	1.51	34.89	0.13	36.53	31.57	4.96	
77			Daghetta	4.31	91.77	0.71	96.79	75.99	20.80	
78			Islampur	0.79	21.78	0.09	22.66	17.73	4.93	
79			Madora	4.72	55.09	0.68	60.49	57.06	3.43	
80			Patloni	3.84	50.29	0.51	54.64	45.34	9.30	
81		Mathura	Aduki	0.62	76.90	0.24	77.76	62.61	15.15	
82			Bati	4.09	92.87	0.55	97.51	82.53	14.98	
83			Dhorera	0.01	32.08	0.47	32.56	17.21	15.35	

84			Junsati	2.58	66.91	0.37	69.86	60.22	9.64
85			Maholi	1.72	105.51	0.63	107.86	86.74	21.12
86			Narholi	4.61	63.07	0.42	68.10	56.00	12.10
87			Satoha	1.12	50.70	0.14	51.96	42.31	9.65
<b>Total</b>				<b>29.92</b>	<b>741.86</b>	<b>4.94</b>	<b>776.72</b>	<b>635.31</b>	<b>141.41</b>
88	Sambhal	Baniakhera	Akberpur Chitori	4.43	36.12	0.24	40.79	34.35	6.44
89			Baniyakhera	2.83	58.99	0.32	62.14	58.06	4.08
90			Chidiya Bhawan	4.08	56.83	0.50	61.41	47.97	13.44
91			Jaroil Hayatnagar	1.78	63.64	0.43	65.85	44.62	21.23
92			Kokawas	3.18	33.15	0.26	36.59	29.57	7.02
93			Moh. Saadikpur	2.41	37.03	0.36	39.8	36.33	3.47
94			Naveni Udyia	3.71	26.12	0.19	30.02	27.69	2.33
95			Raholi	5.42	54.51	0.29	60.22	60.18	0.04
96			Shyamshingh Bhoodi	0.51	34.68	0.08	35.27	21.82	13.45
97			Rajpura	Baybhood	0.33	19.09	0.22	19.64	14.96
98		Chaupur Danda		0.62	38.6	0.15	39.37	37.38	1.99
99		Harphari		0.31	20.52	0.13	20.96	16.44	4.52
100		Kesarpur		0.42	25.96	0.40	26.78	21.48	5.30
101		Mukutpur		0.27	16.8	0.13	17.2	15.54	1.66
102		Rjawali		0.4	24.06	0.19	24.65	22.98	1.67
103				Sikandarpur Khagi	0.28	17.81	0.10	18.19	14.54
<b>Total</b>				<b>30.98</b>	<b>563.91</b>	<b>3.99</b>	<b>598.88</b>	<b>503.91</b>	<b>94.97</b>
104	Shravasti	Gilaula	Auraiya-Tikai	0.02	34.16	0.32	34.50	29.03	5.47
105			Chandarkha-Bujurg	11.00	107.69	1.88	120.57	104.06	16.51
106			Gilaula	6.06	101.59	0.67	108.32	94.03	14.29
107			Kakandhu	5.52	65.21	1.50	72.23	62.97	9.26
108			Kort-Mubarak	4.03	66.29	0.63	70.95	61.92	9.03
109			Nibabhari	2.52	46.20	0.83	49.55	44.34	5.21
110			Ranipur-Kaji	0.28	27.19	0.07	27.54	23.10	4.44
111		Jamunaha	Bahorawa	2.28	50.62	0.33	53.23	45.42	7.81
112			Chamarpurwa	0.08	36.37	0.18	36.63	30.56	6.07
113			Fatehpur-Bangai	1.78	102.72	1.14	105.64	91.66	13.98
114			Jhirjhirwa	1.36	34.42	0.25	36.03	31.36	4.67
115			Laxmanpur-Gangapur	0.96	40.57	0.41	41.94	35.00	6.94
116			Parsohana	3.27	61.66	0.25	65.18	58.03	7.15
117			Sehariya	3.10	43.02	0.28	46.40	41.20	5.20
<b>Total</b>				<b>42.26</b>	<b>817.71</b>	<b>8.74</b>	<b>868.71</b>	<b>752.68</b>	<b>116.03</b>
118	Siddhartha Nagar	Bhanwapur	Andua-Shnichara	0.05	28.05	0.05	28.15	24.63	3.52
119			Beshkoher	1.29	79.22	0.25	80.76	70.15	10.61
120			Chaukhada	1.5	49.96	0.34	51.8	45.58	6.22
121			Gadawer	2.73	39.14	0.34	42.21	38.86	3.35
122			Judi-Kueya	0.45	40.7	0.1	41.25	38.12	3.13
123			Mahtinia-Bujurg	1.01	22.72	0.11	23.84	20.65	3.19
124			Pandia	1.32	23.81	0.05	25.18	22.08	3.1
125			Ramwapur-Raut	0.15	25.46	0.05	25.66	23.35	2.31
126			Shohna	0	35.87	0.24	36.11	31.15	4.96
127		Jogia Khas	Baijnatha	1.51	37.43	0.16	39.1	34.65	4.45
128			Devra-Bazar	1.04	37.19	0.23	38.46	34.15	4.31

129			Jakhaulia	3.95	36.05	0.25	40.25	37.87	2.38	
130			Khetwal-Tiwari	2.19	30.86	0.29	33.34	30.33	3.01	
131			Nadwalia	2.16	57.41	0.12	59.69	58.39	1.30	
132			Sabui-Sabua	0.76	19.06	0.05	19.87	17.48	2.39	
133		Nawgarh	Basauni	0.57	23.85	0.05	24.47	23.87	0.60	
134			Durjanpur	2.92	24.88	0.10	27.90	25.09	2.81	
135			Khaleelpur	2.2	67.67	0.74	70.61	62.06	8.55	
136			Mahdeva-lala	3.36	31.32	0.35	35.03	31.95	3.08	
137			Rasoolpur	0.81	70.04	0.21	71.06	65.79	5.27	
<b>Total</b>				<b>29.97</b>	<b>780.69</b>	<b>4.08</b>	<b>814.74</b>	<b>736.2</b>	<b>78.54</b>	
138	Sonebhadra	Babhani	Arjhat	1.24	40.20	0.58	42.02	36.32	5.70	
139			Chainpur	3.46	43.76	0.61	47.83	38.9	8.93	
140			Hathiyar	3.15	91.19	0.68	95.02	91.01	4.01	
141		Ghorawal	Amaur	1.40	26.16	0.18	27.74	23.91	3.83	
142			Barwan	2.61	30.45	0.73	33.79	26.13	7.66	
143			Dewrikath	0.65	31.81	0.20	32.66	27.43	5.23	
144			Gurawal	0.94	45.2	0.18	46.32	39.04	7.28	
145			Kaneti	4.22	42.80	0.53	47.55	42.97	4.58	
146			Kharuawn	1.42	34.83	0.43	36.68	31.71	4.97	
147			Lohandi	1.24	45.40	0.27	46.91	40.57	6.34	
148			Morahi	2.15	33.52	0.47	36.14	31.78	4.36	
149			Parsauna	3.14	64.56	0.46	68.16	56.92	11.24	
150			Sarnga	4.55	42.01	0.65	47.21	41.78	5.43	
151			Sirsiyathakurai	2.09	105.82	0.95	108.86	94.9	13.96	
<b>Total</b>				<b>32.26</b>	<b>677.71</b>	<b>6.92</b>	<b>716.89</b>	<b>623.37</b>	<b>93.52</b>	
152	Unnao	Auraaas	Ahamdpur Kashimpur	1.69	29.77	0.03	31.49	27.04	4.45	
153			Bisaval	0.47	30.10	0.05	30.62	25.33	5.29	
154			Gohali	0.35	20.76	0.08	21.19	19.13	2.06	
155			Khadval	0.46	29.81	0.19	30.46	25.70	4.76	
156			Sahpur Tonda	3.99	48.49	0.21	52.69	45.14	7.55	
157			Ganj Moradabad	Atva	1.96	24.14	0.10	26.2	21.07	5.13
158		Esamailpur Ambahpara		2.47	17.24	0.09	19.8	16.73	3.07	
159		Jafarabad		1.01	19.74	0.09	20.84	17.74	3.10	
160		Khairahan		0.51	15.10	0.08	15.69	14.16	1.53	
161		Raneepur garnt		1.75	22.04	0.18	23.97	19.94	4.03	
162		Purwa		Bahraora-Bujurag	3.02	20.23	0.27	23.52	21.69	1.83
163				Chimiyani	4.46	100.10	0.99	105.55	88.18	17.37
164				Lakhmandemau	0.71	17.37	0.3	18.38	16.54	1.84
165				Navav	0.86	22.13	0.10	23.09	21.10	1.99
166				Taragharia	0.82	20.05	0.39	21.26	19.24	2.02
<b>Total</b>				<b>24.53</b>	<b>437.07</b>	<b>3.15</b>	<b>464.75</b>	<b>398.73</b>	<b>66.02</b>	
<b>Grand Total (10 Districts)</b>		<b>26</b>	<b>166</b>	<b>326.17</b>	<b>6,851.16</b>	<b>57.31</b>	<b>7,234.64</b>	<b>6,209.03</b>	<b>1,025.61</b>	

(Source: Concerned GP)

## Appendix 2.5

### Details of Tax collected by ZPs but not appropriated to GPs (2011-16)

(Reference: Paragraph no. 2.7.1.3; page 26)

(₹ in lakh)

Sl. No.	Name of ZP	CP Tax collected		Tax on disposal of dead animal	
		Collected	Due but not transferred	Collected	Due but not transferred
1.	Agra	4.67	Not determined	64.89	32.45
2.	Ambedkar Nagar	129.85	Not determined	0.45	0.23
3.	Bulandshahar	138.47	Not determined	97.01	48.50
4.	Jaunpur	0.00	Not determined	0.73	0.36
5.	Mathura	19.75	Not determined	55.27	27.64
6.	Sambhal	36.93	Not determined	37.12	18.56
7.	Shravasti	50.66	Not determined	28.84	14.42
8.	Siddharth Nagar	105.34	Not determined	2.80	1.40
9.	Sonebhadra	74.46	Not determined	5.42	2.71
10.	Unnao	63.24	Not determined	113.15	56.58
<b>Total</b>		<b>623.37</b>		<b>405.68</b>	<b>202.85</b>

(Source: Concerned ZP)

## Appendix 2.6

### ZPs resources, expenditure and balance of resources (2011-16)

(Reference: Paragraph no. 1.10 and 2.7.2.2; page 8 and 28)

(₹ in crore)

Sl. No.	Name of ZP	Opening balance as on 1 <sup>st</sup> April 2011	Resources of test checked ZPs					Expenditure	Balance of resources as on 31 <sup>st</sup> March 2016
			Own sources	Funds received under CFC	Funds received under SFC	Interest earned	Total		
1.	Agra	5.59	12.08	26.21	62.01	2.16	108.05	93.00	15.06
2.	Ambedkar Nagar	4.10	4.72	24.33	54.23	2.09	89.47	77.17	12.30
3.	Bulandshahar	4.18	31.78	27.70	64.21	1.86	129.73	116.84	12.88
4.	Jaunpur	0.00	8.32	48.75	104.51	4.00	165.59	133.99	31.60
5.	Mathura	3.11	5.37	18.39	45.56	2.11	74.53	62.95	11.58
6.	Sambhal (2012-16)	0.00	5.75	17.13	39.94	1.43	64.25	51.87	12.37
7.	Shravasti	3.36	5.23	17.30	35.14	0.95	61.98	48.81	8.32
8.	Siddharth Nagar	8.79	4.53	28.97	64.67	1.57	108.53	102.61	5.92
9.	Sonebhadra	0.00	26.85	17.81	54.03	3.50	102.20	89.96	12.24
10.	Unnao	5.58	5.95	31.19	68.41	3.83	114.96	85.24	29.72
<b>Total</b>		<b>34.71</b>	<b>110.58</b>	<b>257.78</b>	<b>592.71</b>	<b>23.50</b>	<b>1,019.29</b>	<b>862.44</b>	<b>151.99</b>

(Source: Concerned ZP)

## Appendix 2.7

### Investment made in providing basic facilities by ZPs (2011-16)

(Reference: Paragraph no. 2.7.2.3; page 29)

(₹ in crore)

Sl. No.	Name of ZPs	Construction/maintenance of roads		Upkeep and maintenance of other basic facilities	
		Quantity (No. of roads)	Amount	Quantity (No. of roads)	Amount
1.	Agra	908	77.92	0	0
2.	Ambedkar Nagar	770	56.72	57	5.57
3.	Bulandshahar	1,304	81.64	0	0
4.	Jaunpur	1,351	109.36	0	0
5.	Mathura	1,272	47.86	33	2.22
6.	Sambhal	610	47.06	0	0
7.	Shravasti	496	32.23	27	1.57
8.	Siddharth Nagar	714	84.46	0	0.00
9.	Sonebhadra	561	67.86	7	0.61
10.	Unnao	398	40.98	0	0
<b>Total</b>		<b>8,384</b>	<b>646.09</b>	<b>124</b>	<b>9.97</b>

(Source: Concerned ZP)

## Appendix 2.8

### Basic facilities provided by test checked KPs (2011-16)

(Reference: Paragraph no. 2.7.2.3; page 29)

(₹ in lakh)

Sl. No.	Name of District	Name of KP	New water supply projects		Drinking and sanitation facilities		Sewage facilities		Street light		Construction/maintenance of roads		Other public facilities etc.	
			Qt.	Amt.	Qt.	Amt.	Qt.	Amt.	Qt.	Amt.	Qt.	Amt.	Qt.	Amt.
1	Agra	Achhnera	0	0	0	0	0	0	0	0	48	133.29	4	12.98
2	Agra	Etmadpur	0	0	0	0	0	0	0	0	46	225.45	0	0
3	Agra	Khandauli	0	0	13	40.30	0	0	0	0	33	173.75	5	29.25
4	Ambedkar Nagar	Baskhari	0	0	0	0	0	0	203	57.79	72	233.78	23	51.98
5	Ambedkar Nagar	Kathari	0	0	0	0	0	0	0	0	102	254.96	22	35.77
6	Bulandshahar	Agauta	0	0	0	0	0	0	0	0	37	164.9	1	2.88
7	Bulandshahar	Gulaothi	0	0	0	0	0	0	10	1.98	47	111	0	0
8	Bulandshahar	Sikarpur	0	0	0	0	0	0	0	0	57	221.98	2	16.30
9	Jaunpur	Baksha	2	0.44	0	0	2	2.07	106	20.19	107	342.74	4	1.37
10	Jaunpur	Karanjakala	0	0	0	0	19	34.80	0	0	205	637.10	0	0
11	Jaunpur	Mariyahun	0	0	6	18.19	0	0	0	0	97	320.65	0	0
12	Jaunpur	Shahganj	0	0	0	0	25	59.41	20	3.90	75	373.31	29	27.76
13	Mathura	Baldeo	0	0	2	8.69	0	0	0	0	55	248.68	3	5.07
14	Mathura	Mathura	0	0	0	0	0	0	0	0	74	387.21	1	1.03
15	Sambhal	Baniakhera	0	0	2	10.98	0	0	0	0	76	312.35	17	19.76
16	Sambhal	Rajpura	0	0	0	0	0	0	0	0	32	244.94	0	0
17	Shrawasti	Gilaula	0	0	0	0	0	0	0	0	100	463.78	0	0
18	Shrawasti	Jamunaha	0	0	0	0	4	7.45	0	0	87	275.31	2	5.25
19	Siddharth Nagar	Bhanwapur	3	5.03	6	7.03	0	0	15	8.40	52	324.30	0	0
20	Siddharth Nagar	Jogia Khas	0	0	9	91.81	0	0	0	0	25	125.95	0	0
21	Siddharth Nagar	Nawgarh	0	0	4	13.18	0	0	3	17.03	59	239.44	0	0
22	Sonbhadra	Babhani	0	0	10	79.95	0	0	0	0	4	28.97	15	14.39
23	Sonbhadra	Ghorawal	1	2.40	4	31.05	0	0	53	7.29	65	248.50	0	0.00
24	Unnao	Auraas	0	0	0	0	0	0	0	0	65	230.41	0	0
25	Unnao	Ganj Moradabad	0	0	0	0	0	0	0	0	38	224.90	0	0
26	Unnao	Purwa	0	0	0	0	0	0	0	0	46	205.32	0	0
<b>Total</b>			<b>6</b>	<b>7.87</b>	<b>56</b>	<b>301.18</b>	<b>50</b>	<b>103.73</b>	<b>410</b>	<b>116.58</b>	<b>1,704</b>	<b>6,752.97</b>	<b>128</b>	<b>223.79</b>

(Source: Concerned KPs)



## Appendix 2.9

### Basic facilities provided by test checked GPs (2011-16)

(Reference: Paragraph no. 2.7.2.3; page 29)

(₹ in lakh)

Sl. No.	Name of District	No of KPs	No of GP	Renovation of old drinking water facilities		Drinking and sanitation facilities		Street light		Construction/maintenance of roads		Other public facilities etc.	
				No.	Amount	No.	Amount	No.	Amount	No.	Amount	No.	Amount
1	Agra	3	13	1,422	41.98	127	86.28	19	4.14	427	415.34	25	13.94
2	Ambedkar Nagar	2	15	864	24.74	173	88.60	103	36.46	294	182.32	118	58.35
3	Bulandshahar	3	14	650	7.89	157	80.17	69	5.37	415	252.50	36	13.26
4	Jaunpur	4	33	3,649	119.88	583	170.45	80	3.46	936	591.56	486	109.94
5	Mathura	2	12	1,507	29.66	12	2.61	347	11.99	483	570.34	57	18.14
6	Sambhal	2	16	184	5.86	46	37.89	55	4.24	327	481.53	16	12.41
7	Shrawasti	2	14	1,120	18.84	272	150.82	401	26.04	538	443.31	174	89.16
8	Siddharth Nagar	3	20	280	7.99	267	152.88	184	11.71	428	481.27	323	140.71
9	Sonbhadra	2	14	4,651	146.07	92	71.85	14	10.24	160	148.85	149	120.77
10	Unnao	3	15	1,174	27.34	323	101.24	60	4.76	217	228.67	121	25.26
<b>Total</b>		<b>26</b>	<b>166</b>	<b>15,501</b>	<b>430.25</b>	<b>2,052</b>	<b>942.79</b>	<b>1,332</b>	<b>118.41</b>	<b>4,225</b>	<b>3,795.69</b>	<b>1,505</b>	<b>601.94</b>

(Source: Concerned GPs)

## Appendix 2.10

### ZP wise status of intra GPs works carried out during 2011-16

(Reference: Paragraph no. 2.7.2.3; page 30)

(₹ in crore)

Sl. No.	Name of ZP	Period	No. of works	Amount spent
1.	Agra	2011-16	912	77.92
2.	Ambedkar Nagar	2011-16	825	62.18
3.	Bulandshahar	2011-16	1,292	80.96
4.	Jaunpur	2011-15	164	21.28
5.	Mathura	2015-16	35	0.96
6.	Sambhal	2011-16	542	42.47
7.	Shravasti	2015-16	64	2.88
8.	Siddharth Nagar	2011-16	356	32.86
9.	Sonebhadra	2011-16	561	67.85
10.	Unnao	2011-14	45	4.17
<b>Total</b>				<b>394.14</b>

(Source: Audit scrutiny and information provided by ZP)

## Appendix 2.11

### Deficiencies in tender processing

(Reference: Paragraph no. 2.7.2.3; page 30)

(Figures in numbers)

Sl. No.	Area of deficiency	Nature of deficiency	Files checked	Files with deficiencies (Per cent)	ZPs	Name of ZPs
1.	Work estimates	Estimates not sanctioned by appropriate authority.	175	66 (38)	3	Jaunpur, Siddharth Nagar and Unnao
2.		Deviation in estimate not sanctioned by appropriate authority.	175	36(21)	2	Mathura and Unnao
3.		Estimate signed without date.	175	175(100)	7	Agra, Ambedkar Nagar, Bulandshahar, Jaunpur, Mathura, Siddharth Nagar and Unnao
4.	Tender notice	Tender noticed not published in two newspapers.	175	25(14)	1	Mathura
5.		Minimum 21 days clear time for submission of tender was not provided.	175	72(41)	4	Ambedkar Nagar, Jaunpur, Mathura and Siddharth Nagar
6.		Tender documents without requisite documents but entertained.	175	113(65)	5	Ambedkarnagar, Jaunpur, Mathura, Siddharth Nagar and Unnao
7.		Tender form /notice to contractor does not contain validity period of tendered rate	175	75(43)	3	Jaunpur, Siddharth Nagar and Unnao
8.	Tender documents	Tender envelopes were not sealed but were pasted/stapled.	175	175(100)	7	Agra, Ambedkar Nagar, Bulandshahar, Jaunpur, Mathura, Siddharth Nagar and Unnao
9.		Tenders without due earnest money but entertained.	175	100(57)	4	Ambedkar Nagar, Jaunpur, Siddharth Nagar and Unnao
10.		Tenders submitted contained affidavit in lieu of requisite documents.	175	11(6)	1	Mathura
11.	Tender opening	Tender not opened by AMA/BDO themselves.	175	75(43)	3	Jaunpur, Bulandshahar and Unnao
12.		Tender not opened in presence of Engineer/Accountant.	175	5(3)	1	Unnao
13.		Tender envelop not contained signatures of all the concerned in same date of opening the tender.	175	5(3)	1	Unnao
14.	Tendered rate	Quoted rates were not written in words.	175	175(100)	7	Agra, Ambedkar Nagar, Bulandshahar, Jaunpur, Mathura, Siddharth Nagar and Unnao
15.		After opening tenders, quoted rates were not encircled.	175	91(52)	4	Jaunpur, Mathura, Siddharth Nagar and Unnao

16.	<b>Processing the tender</b>	Date of preparing comparative chart was not mentioned.	175	9(5)	3	Jaunpur, Mathura and Siddharth Nagar
17.		Signatures of the members of the works committee approving the tender not found in the same date.	175	100(57)	4	Jaunpur, Mathura, Siddharth Nagar and Unnao
18.	<b>Placing work order</b>	Work orders not issued within one week of approval.	175	32(18)	3	Mathura, Siddharth Nagar and Unnao
19.	<b>Making agreement</b>	Agreement with the contractor was not made within 21 days of issue of the work order.	175	32(18)	4	Jaunpur, Mathura, Siddharth Nagar and Unnao
20.		Major details of the contract not mentioned on agreement stamp paper but on plain paper.	175	50(29)	3	Ambedkar Nagar, Unnao and Mathura
21.	<b>Security/performance guarantee</b>	Non/short recovery of performance guarantee	175	100(57)	4	Jaunpur, Mathura, Siddharth Nagar and Unnao
22.		Non release of security deposits/performance guarantee.	175	23(13)	2	Mathura and Unnao

(Source: Audit scrutiny)

## **Appendix 2.12**

### **List of records not maintained by GPs**

*(Reference: Paragraph no. 2.7.2.3; page 33)*

Sl. No.	Name of records	Purpose for which to be maintained
1.	Pass Book	This pass book is other than bank pass book for recording receipts from the Government and their expenses by PRIs.
2.	Demand and recovery register	Depicts assessment and realisation of revenue.
3.	Security registers	For recording the amount of security taken from the concerned.
4.	Public works register	Exhibit details of works and payment there against.
5.	Muster roll register	Control receipt and consumption of muster rolls.
6.	Security deposit register	For recording the amount of security deposit kept contractor/work wise.
7.	Stock book	Facilitates stock taking of material procured and issued on the works/sister units.
8.	Internal Audit register	Show status of audit conducted and details audit paragraphs.
9.	Guard file	For keeping audit reports.

(Source: Audit scrutiny)

## Appendix 3.1

### Detail of labourers whom double payment was made on muster rolls

(Reference: Paragraph no. 3.2; page 39)

(Amount in ₹)

SI No.	Name of labourers	Father's Name	Address of labourers	Working Days	Rate	Amount
<b>Construction of Water Bound Macadam road (29.08.13 to 05.09.13)</b>						
1.	Mamber	Ali Ullaha	Dubepur, Sonbhadra	07	142	994
2.	Siraaj	Ali Ullaha	Dubepur, Sonbhadra	07	142	994
3.	Rakiboon	Ali Ullaha	Dubepur, Sonbhadra	07	142	994
4.	Aalam	Sattar	Dubepur, Sonbhadra	07	142	994
5.	Sitara	Aalam	Dubepur, Sonbhadra	07	142	994
6.	Bakshi	Nara Ullaha	Dubepur, Sonbhadra	07	142	994
7.	Rahmad	Buddhu	Dubepur, Sonbhadra	07	142	994
8.	Balwant	Kalendra	Dubepur, Sonbhadra	07	142	994
9.	Nasima	Daade	Dubepur, Sonbhadra	07	142	994
10.	Tusmi	Wasim	Dubepur, Sonbhadra	07	142	994
11.	Bifnee	Ramkesh	Dubepur, Sonbhadra	07	142	994
12.	Lakshmeena	Ramkesh	Dubepur, Sonbhadra	07	142	994
13.	Jitendra	Paalkija	Dubepur, Sonbhadra	07	142	994
14.	Saanun	Abulesh	Dubepur, Sonbhadra	07	142	994
15.	Naajli	Atthar	Dubepur, Sonbhadra	07	142	994
16.	Nirjaatan	Abulesh	Dubepur, Sonbhadra	07	142	994
17.	Chaanu	Saukat	Dubepur, Sonbhadra	07	142	994
18.	Rozadin	Bhobhal	Dubepur, Sonbhadra	07	142	994
19.	Mumtaj	Naasir	Dubepur, Sonbhadra	07	142	994
20.	Kanhaiyya	Ram Prasad	Dubepur, Sonbhadra	07	142	994
21.	Suvrott	Ashlesh	Dubepur, Sonbhadra	07	142	994
22.	Rehana	Dukkhi	Dubepur, Sonbhadra	07	142	994
23.	Ayesha	Ashraf	Dubepur, Sonbhadra	07	142	994
24.	Nandu	Gopal	Dubepur, Sonbhadra	07	142	994
25.	Bahadur	Nanhai	Dubepur, Sonbhadra	07	142	994
26.	Kuraisha	Haneef	Dubepur, Sonbhadra	07	142	994
27.	Sumitra	Bahadur	Dubepur, Sonbhadra	07	142	994
28.	Tazmaa	Mustaffa	Dubepur, Sonbhadra	07	142	994
29.	Russina	Noor Hasan	Dubepur, Sonbhadra	07	142	994
30.	Sattar	Abbas	Dubepur, Sonbhadra	07	142	994
31.	Muniya	Sattar	Dubepur, Sonbhadra	07	142	994
32.	Ajay	Rozadin	Dubepur, Sonbhadra	07	142	994
33.	Hasmuddin	Babu	Dubepur, Sonbhadra	07	142	994
34.	Jadawati	Sahadur	Dubepur, Sonbhadra	07	142	994
35.	Hansraj	Jaakir	Dubepur, Sonbhadra	07	142	994

36.	Salma	Jaakir	Dubepur, Sonbhadra	07	142	994
37.	Kalui	Bhonu	Dubepur, Sonbhadra	07	142	994
38.	Samim	Raju	Dubepur, Sonbhadra	07	142	994
39.	Farukkh	Sattar	Dubepur, Sonbhadra	07	142	994
40.	Jallu	Ali Ullaha	Dubepur, Sonbhadra	07	142	994
41.	Chandan	Shri Gopal	Dubepur, Sonbhadra	02	142	284
42.	Mukhtaar	Abbas	Dubepur, Sonbhadra	02	142	284
43.	Muradan	Aziz	Dubepur, Sonbhadra	02	142	284
44.	Ashraf	Sohraab	Dubepur, Sonbhadra	02	142	284
45.	Abdul	Muradan	Dubepur, Sonbhadra	02	142	284
46.	Hasnain	Nasima	Dubepur, Sonbhadra	02	142	284
47.	Noorjhan	Mukhtar	Dubepur, Sonbhadra	02	142	284
48.	Noorjhan	Shakir	Dubepur, Sonbhadra	02	142	284
<b>Total</b>						<b>42,032</b>
<b>Chauka Karya in Chorahat (05.11.13 to 10.11.13)</b>						
1.	Mohan Mistri	Jay Shree	Sultanpur	6	250	1500
2.	Chotu	Bholu	Bareilly Fathepur	6	250	1500
3.	Sonu	Alimuddin	Chaurahat	2	250	500
4.	Raju	Ramjan	Chaurahat	6	150	900
5.	Puli	Jaudi	Fathepur	6	150	900
6.	Patalu	Nandu	Fathepur	6	150	900
7.	Balla	Radhe Shyam	Fathepur	6	150	900
8.	Sonu	Jokhu	Fathepur	6	150	900
9.	Girija	Kallu	Semara	6	150	900
10.	Ramroop	Basantu	Nathupur	6	150	900
11.	Chandan	Ramkisun	Nathupur	6	150	900
12.	Rahim	Jaijue	Chaurahat	6	150	900
13.	Bauli	Ramroop	Nathupur	6	150	900
14.	Pintu	Fenku	Katesar	6	150	900
15.	Ravi	Munna	Fathepur	6	150	900
16.	Benchu	Lalta	Fathepur	6	150	900
17.	Ajay	Chhangur	Nathupur	6	150	900
18.	Ghurelal	Bhola	Fathepur	6	150	900
19.	Kishori	Nakhadu	Sultanpur	6	150	900
20.	Ashok	Bachharam	Ratanpur	6	150	900
21.	Kallu	Ganesh	Nathupur	6	150	900
<b>Total</b>						<b>19,700</b>
<b>CC road and sewer line in Gopalpur (02.04.14 to 07.04.14)</b>						
22.	Raju Prasad	Mahinder	Hamidpur	6	250	1500
23.	Rajinder	Mohu	Hamidpur	6	250	1500
24.	Ajay	Ramji	Hamidpur	6	250	1500
25.	Surendar	Nirjue	Hamidpur	6	250	1500

26.	Uma Shanker	Sonai Sharma	Hamidpur	6	150	900
27.	Shankar	Lallu	Hamidpur	6	150	900
28.	Shiv Ratan	Bharllu	Hamidpur	6	150	900
29.	Ram Khelawan	Jidat	Hamidpur	6	150	900
30.	Rahul	Shyam Mohan	Hamidpur	6	150	900
31.	Saleem	Rojan Ali	Hamidpur	6	150	900
32.	Badaru	Sulaman	Hamidpur	6	150	900
33.	Guddu	Ramjit	Hamidpur	6	150	900
34.	Kamlesh	Klvaru	Hamidpur	6	150	900
35.	Dilip	Jhute	Hamidpur	6	150	900
36.	Nagender	Ram chander	Hamidpur	6	150	900
37.	Monu	Janardhan	Hamidpur	6	150	900
38.	Amit	Abhinandan	Hamidpur	6	150	900
39.	Shiv Bart	Ramphal	Hamidpur	6	150	900
40.	Rakesh	Durjan	Hamidpur	6	150	900
41.	Ram Chander	Pujan	Hamidpur	3	150	450
<b>Total</b>						<b>19,950</b>
<b>Grand Total</b>						<b>81,682</b>

(Source: Block Development Officer KP, Nagar, Sonbhadra)

## Appendix 3.2

### Status of sanctioned, released and expenditure of fund for construction Gram Panchayat Sachivalaya in ZP, Fatehpur

(Reference: Paragraph no. 3.3; page 40)

(₹ in lakh)

Sl. No.	Name of Gram Panchayat Sachivalaya	Sanctioned Amount	Sanctioned Order no./Date	Released Amount	Released Date	Expenditure	Status
1	Mubarakpur Gariya	14.72	2931/33-P.M.U/2010-605/10 dated 14.09.2010	14.72	10.12.2010	13.00	Substandard
2	Hardashpur Gariya	14.72	2931/33-P.M.U/2010-605/10 dated 14.09.2010	14.72	10.12.2010	11.00	Work not started
3	Belapur	14.72	2931/33-P.M.U/2010-605/10 dated 14.09.2010	14.72	10.12.2010	11.50	Substandard
4	Jahangir Nagar	14.72	2931/33-P.M.U/2010-605/10 dated 14.09.2010	14.72	10.12.2010	0.00	Work not started
5	Rawatpur	14.72	2931/33-P.M.U/2010-605/10 dated 14.09.2010	14.72	10.12.2010	13.50	Substandard
6	Owng	14.72	2931/33-P.M.U/2010-605/10 dated 14.09.2010	14.72	10.12.2010	13.50	Substandard
7	Pandeypur	14.72	2931/33-P.M.U/2010-605/10 dated 14.09.2010	14.72	10.12.2010	11.50	Substandard
8	Gurgoula	14.72	2931/33-P.M.U/2010-605/10 dated 14.09.2010	14.72	10.12.2010	12.50	Incomplete
9	Tenduli Lakhipur	14.72	2986/33-P.M.U/2010-605/10 dated 24.11.2010	14.72	17.02.2011	12.50	Incomplete
10	Ghanshyampur	14.72	2986/33-P.M.U/2010-605/10 dated 24.11.2010	14.72	17.02.2011	5.50	Incomplete
11	Anjana Kabir	14.72	2931/33-P.M.U/2010-605/10 dated 14.09.2010	14.72	10.12.2010	7.50	Incomplete
12	Makhadoompur Kala	14.72	2931/33-P.M.U/2010-605/10 dated 14.09.2010	14.72	10.12.2010	12.50	Incomplete
13	Kulli	14.72	2931/33-P.M.U/2010-605/10 dated 14.09.2010	14.72	10.12.2010	12.50	Incomplete
14	Rari	14.72	2931/33-P.M.U/2010-605/10 dated 14.09.2010	14.72	10.12.2010	12.00	Incomplete
15	Kalana	14.72	2986/33-P.M.U/2010-605/10 dated 24.11.2010	14.72	17.02.2011	10.72	Incomplete
<b>Total</b>		<b>220.80</b>		<b>220.80</b>		<b>159.72</b>	

(Source : Apar Mukhya Adhikari, ZP Fatehpur)