

# **Annexures**

**Annexure – 1.1**  
**Statement showing particulars of up to date paid-up capital, loans outstanding and manpower as on 31 March 2014 in respect of**  
**Government companies and Statutory corporation**  
*(Referred to in paragraph 1.7)*

*(Figures in column 5 (a) to 6 (d) are ₹ in lakhs)*

Sl. No.	Sector & Name of the Company	Name of the Department	Month and year of incorporation	Paid-up Capital <sup>b</sup>			Loans outstanding at the close of 2013-14			Debt equity ratio for 2013-14 (Previous year)	Manpower (No. of employees as on 31.3.2014)		
				State Government	Central Government	Others	Total	State Government	Central Government			Others	Total
(1)	(2)	(3)	(4)	5 (a)	5 (b)	5 (c)	5 (d)	6 (a)	6 (b)	6 (c)	6 (d)	(7)	(8)
<b>A. Working Government Companies</b>													
<b>AGRICULTURE &amp; ALLIED</b>													
1.	Jharkhand State Forest Development Corporation Limited	Forest & Environment	27.3.2002	5.00	-	-	5.00	-	-	-	-	-	246
2.	Jharkhand Hill Area Lift Irrigation Corporation Limited	Water Resources	22.3.2002	500.00	-	-	500.00	525.00	-	-	525.00	1.05:1	199
<b>Sector wise total</b>				<b>505.00</b>	<b>-</b>	<b>-</b>	<b>505.00</b>	<b>525.00</b>	<b>-</b>	<b>-</b>	<b>525.00</b>	<b>1.04:1</b>	<b>445</b>
<b>INFRASTRUCTURE</b>													
3.	Jharkhand Industrial Infrastructure Development Corporation Limited	Industry	15.12.2004	1200.00 (200.00)	-	-	1200.00 (200.00)	-	-	-	-	-	13
4.	Jharkhand Police Housing Corporation Limited	Home	13.03.2002	200.00	-	-	200.00	-	-	-	-	-	48
5.	Greater Ranchi Development Agency Limited	Planning & Development	23.01.2003	3500.00 (3450.00)	-	-	3500.00 (3450.00)	-	-	-	-	-	10
<b>Sector wise total</b>				<b>4900.00 (3650.00)</b>	<b>-</b>	<b>-</b>	<b>4900.00 (3650.00)</b>	<b>-</b>	<b>-</b>	<b>-</b>	<b>-</b>	<b>-</b>	<b>71</b>
<b>MANUFACTURING</b>													
6.	Jharkhand Silk Textile and Handicraft Development Corporation Limited	Industry	23.08.2006	1000.00	-	-	1000.00	-	-	450.00	450.00	0.45:1	275*
7.	Jharkhand State Mineral Development Corporation Limited	Mines & Geology	07.05.2002	200.00	-	-	200.00	-	-	-	-	-	342
<b>Sector wise total</b>				<b>1200.00</b>	<b>-</b>	<b>-</b>	<b>1200.00</b>	<b>-</b>	<b>-</b>	<b>450.00</b>	<b>450.00</b>	<b>0.38:1</b>	<b>617</b>
<b>POWER</b>													
8.	Tenghat Vidyut Nigam Limited	Energy	26.11.1987	10500.00	-	-	10500.00	66589.87	-	-	66589.87	6.34:1	608
9.	Karanpura Energy Limited	Energy	19.09.2008	-	-	5.00	5.00	-	-	1195.75	1195.75	239.15:1	❖
10.	Jharkhand Urja Vikas Nigam	Energy	16.09.2013	840.00	-	-	840.00	-	-	-	-	-	-

Audit Report on Public Sector Undertakings for the year ended 31 March 2014

Sl. No.	Sector & Name of the Company	Name of the Department	Month and year of incorporation	Paid-up Capital <sup>†</sup>				Loans outstanding at the close of 2013-14				Debt equity ratio for 2013-14 (Previous year)	Manpower (No. of employees as on 31.3.2014)
				State Government	Central Government	Others	Total	State Government	Central Government	Others	Total		
(1)	(2)	(3)	(4)	5 (a)	5 (b)	5 (c)	5 (d)	6 (a)	6 (b)	6 (c)	6 (d)	(7)	(8)
11.	Limited Limited												
	Jharkhand Urja Utpadan Nigam	Energy	23.10.2013	-	-	210.00 <sup>+</sup>	210.00	-	-	-	-	-	-
12.	Jharkhand Urja Sancharan Nigam Limited	Energy	23.10.2013	-	-	210.00 <sup>+</sup>	210.00	-	-	-	-	-	-
13.	Jharkhand Bijli Vitran Nigam Limited	Energy	23.10.2013	-	-	210.00 <sup>+</sup>	210.00	-	-	-	-	-	-
<b>Sector wise total</b>				<b>11340.00</b>	<b>-</b>	<b>635.00</b>	<b>11975.00</b>	<b>66589.87</b>	<b>-</b>	<b>1195.75</b>	<b>67785.62</b>	<b>5.67:1</b>	<b>608</b>
<b>SERVICES</b>													
14.	Jharkhand Tourism Development Corporation Limited	Tourism	22.3.2002	325.00 (25.00)	-	-	325.00 (25.00)	-	-	-	-	-	93
15.	Jharkhand State Beverages Corporation Limited	Excise & Prohibition	26.11.2010	500.00 (300.00)	-	-	500.00 (300.00)	-	-	-	-	-	56
16.	Jharkhand State Food and Civil Supplies Corporation Limited	Public Distribution & Consumer Affairs	18.06.2010	500.00	-	-	500.00	-	-	-	-	-	222
17.	Jharkhand State Minorities Finance Development Corporation	Welfare	15.03.2012	#	-	-	-	-	-	-	-	-	5
<b>Sector wise total</b>				<b>1325.00 (325.00)</b>	<b>-</b>	<b>-</b>	<b>1325.00 (325.00)</b>	<b>-</b>	<b>-</b>	<b>-</b>	<b>-</b>	<b>-</b>	<b>376</b>
<b>Total A (All sector wise working Government companies) (Share Application Money)</b>				19270.00 (3975.00)	-	635.00	19905.00 (3975.00)	67114.87	-	1645.75	68760.62	3.45:1	2117
<b>B. Working Statutory corporations</b>													
<b>POWER</b>													
1.	Jharkhand State Electricity Board <sup>@</sup>	Energy	20.3.2001	-	-	-	-	565815.00	-	19521.57	585336.57	-	6043
<b>Sector wise total</b>				<b>-</b>	<b>-</b>	<b>-</b>	<b>-</b>	<b>565815.00</b>	<b>-</b>	<b>19521.57</b>	<b>585336.57</b>	<b>-</b>	<b>6043</b>
<b>Total B (All sector wise working Statutory corporations)</b>				-	-	-	-	565815.00	-	19521.57	585336.57	-	6043
<b>Grand Total (A + B) (Share Application Money)</b>				19270.00 (3975.00)	-	635.00	19905.00 (3975.00)	632929.87	-	21167.32	654097.19	32.86:1	8160
<b>C. Non working Government companies</b>													
<b>D. Non working Statutory corporations</b>													
<b>Grand Total (A + B + C + D)</b>				19270.00	-	635.00	19905.00	632929.87	-	21167.32	654097.19	32.86:1	8160

Sl. No.	Sector & Name of the Company	Name of the Department	Month and year of incorporation	Paid-up Capital <sup>†</sup>				Loans outstanding at the close of 2013-14			Debt equity ratio for 2013-14 (Previous year)	Manpower (No. of employees as on 31.3.2014)	
				State Government	Central Government	Others	Total	State Government	Central Government	Others			Total
(1)	(2)	(3)	(4)	5 (a)	5 (b)	5 (c)	5 (d)	6 (a)	6 (b)	6 (c)	6 (d)	(7)	(8)
	(Share Application Money)			(3975.00)			(3975.00)						

(Source: Data furnished by Government companies/Statutory corporation)

The figures appearing in brackets in col. 5(a) & 5(d) represent Share Application Money.

@ Jharkhand State Electricity Board, a Statutory Corporation was re-organised (January 2014) into a holding company, Jharkhand Urja Vikas Nigam Limited (JUVNL) and three subsidiary companies, Jharkhand Urja

Upadan Nigam Limited (JUUNL), Jharkhand Urja Sancharan Nigam Limited (JUSNL), Jharkhand Bijji Vitran Nigam Limited (JBVNL).

§ Paid-up capital includes Share Application Money.

❖ The affairs of the company are managed by the officials of the JSEB.

# Subscribed capital of ₹ 1.00 lakh has not been paid by the Government yet.

\* Including manpower (239) engaged on outsourcing.

+ Paid by the holding company.

Annexure – 1.2

**Statement showing equity, loans, grants and subsidy received/receivable, guarantees received, waiver of dues, loans written off and loans converted into equity during the year and guarantee commitment at the end of March 2014**  
(Referred to in paragraph 1.10)

(Figures in column 3 (a) to 6 (d) are ₹ in lakh)

Sl. No.	Sector & Name of the Company	Equity/loans received out of budget during the year		Grants and subsidy received during the year				Guarantees received during the year and commitment at the end of the year		Waiver of dues during the year			
		Equity	Loans	Central Government	State Government	Others	Total	Received	Commitment	Loans repayment written off	Loans converted into equity	Interest/penal interest waived	Total
(1)	(2)	3 (a)	3 (b)	4 (a)	4 (b)	4 (c)	4 (d)	5 (a)	5 (b)	6 (a)	6 (b)	6 (c)	6 (d)
<b>A. Working Government Companies</b>													
<b>INFRASTRUCTURE</b>													
1.	GRDA	1000.00	-	-	-	-	-	-	-	-	-	-	-
2.	JIDCO	200.00	-	-	-	-	-	-	-	-	-	-	-
	<b>Sector wise total</b>	<b>1200.00</b>	-	-	-	-	-	-	-	-	-	-	-
<b>AGRICULTURE</b>													
3.	JHALCO	-	-	-	571.00	-	571.00	-	-	-	-	-	-
	<b>Sector wise total</b>	<b>-</b>	<b>-</b>	<b>-</b>	<b>571.00</b>	<b>-</b>	<b>571.00</b>	<b>-</b>	<b>-</b>	<b>-</b>	<b>-</b>	<b>-</b>	<b>-</b>
<b>SERVICES</b>													
4.	JTDC	25.00	-	-	-	-	-	-	-	-	-	-	-
	<b>Sector wise total</b>	<b>25.00</b>	<b>-</b>	<b>-</b>	<b>-</b>	<b>-</b>	<b>-</b>	<b>-</b>	<b>-</b>	<b>-</b>	<b>-</b>	<b>-</b>	<b>-</b>
<b>POWER</b>													
5.	JUVNL	840.00	-	-	-	-	-	-	-	-	-	-	-
	<b>Sector wise total</b>	<b>840.00</b>	<b>-</b>	<b>-</b>	<b>-</b>	<b>-</b>	<b>-</b>	<b>-</b>	<b>-</b>	<b>-</b>	<b>-</b>	<b>-</b>	<b>-</b>
	<b>Total A (All sector wise working Government companies)</b>	<b>2065.00</b>	<b>-</b>	<b>-</b>	<b>571.00</b>	<b>-</b>	<b>571.00</b>	<b>-</b>	<b>-</b>	<b>-</b>	<b>-</b>	<b>-</b>	<b>-</b>
<b>B. Working Statutory corporations</b>													
<b>Power</b>													
1.	JSEB	-	17534.00	-	96709.00	-	96709.00	-	-	-	-	-	-
	<b>Sector wise total</b>	<b>-</b>	<b>17534.00</b>	<b>-</b>	<b>96709.00</b>	<b>-</b>	<b>96709.00</b>	<b>-</b>	<b>-</b>	<b>-</b>	<b>-</b>	<b>-</b>	<b>-</b>
	<b>Total B (All sector wise working Statutory corporations)</b>	<b>-</b>	<b>17534.00</b>	<b>-</b>	<b>96709.00</b>	<b>-</b>	<b>96709.00</b>	<b>-</b>	<b>-</b>	<b>-</b>	<b>-</b>	<b>-</b>	<b>-</b>
	<b>Grand Total (A + B)</b>	<b>2065.00</b>	<b>17534.00</b>	<b>-</b>	<b>97280.00</b>	<b>-</b>	<b>97280.00</b>	<b>-</b>	<b>-</b>	<b>-</b>	<b>-</b>	<b>-</b>	<b>-</b>

(Source: Data furnished by Government companies/Statutory corporation)

**Annexure – 1.3**  
**Summarised financial results of Government companies and Statutory corporation for the latest year for which accounts were finalised**  
*(Referred to in paragraph 1.14)*

*(Figures in column 5 (a) to (11) are ₹ in lakh)*

Sl. No.	Sector & Name of the Company	Period of Accounts	Year in which finalised	Net Profit (+)/ Loss (-)		Turnover	Impact of Accounts Comments <sup>#</sup>	Paid up Capital	Accumulated Profit (+)/ Loss (-)	Capital employed <sup>@</sup>	Return on capital employed <sup>\$</sup>	Percentage return on capital employed
				Net Profit/ Interest	Depreciation							
(1)	(2)	(3)	(4)	5 (a)	5 (b)	5 (c)	(7)	(8)	(9)	(10)	(11)	(12)
<b>A. Working Government Companies</b>												
<b>AGRICULTURE &amp; ALLIED</b>												
1.	Jharkhand State Forest Development Corporation Limited	2012-13	2014-15	778.03	-	22.34	26.93	5.00	2444.71	2449.71	755.69	30.85
2.	Jharkhand Hill Area Lift Irrigation Corporation Limited	2009-10	2013-14	(-133.39)	-	0.73	36.28	500.00	(-1040.86)	(-15.86)	(-134.12)	-
<b>Sector wise total</b>				<b>644.64</b>	<b>-</b>	<b>23.07</b>	<b>63.21</b>	<b>505.00</b>	<b>1403.85</b>	<b>2433.85</b>	<b>621.57</b>	<b>25.54</b>
<b>INFRASTRUCTURE</b>												
3.	Jharkhand Industrial Infrastructure Development Corporation Limited	2012-13	2014-15	120.60	-	1.90	8.90	1000.00 (100.00)	324.28	1324.28	118.70	8.96
4.	Jharkhand Police Housing Corporation Limited	2012-13	2013-14	314.10	-	6.43	-	200.00	1879.78	2079.78	307.67	14.79
5.	Greater Ranchi Development Agency Limited	2012-13	2013-14	138.17	-	4.00	-	2500.00 (2450.00)	870.90	3370.90	134.17	3.98
<b>Sector wise total</b>				<b>572.87</b>	<b>-</b>	<b>12.33</b>	<b>8.90</b>	<b>3700.00 (2550.00)</b>	<b>3074.96</b>	<b>6774.96</b>	<b>560.54</b>	<b>8.27</b>
<b>MANUFACTURING</b>												
6.	Jharkhand Silk Textile and Handicraft Development Corporation Limited	2012-13	2014-15	331.48	201.77	92.59	-	1000.00	100.27	1100.27	238.89	21.71
7.	Jharkhand State Mineral	2008-09	2013-14	1409.10	-	15.00	-	200.00	9824.24	10024.24	1394.10	13.91

*Audit Report on Public Sector Undertakings for the year ended 31 March 2014*

Sl. No.	Sector & Name of the Company	Period of Accounts	Year in which finalised	Net Profit (+) / Loss (-)			Turnover	Impact of Accounts Comments <sup>#</sup>	Paid up Capital	Accumulated Profit (+) / Loss (-)	Capital employed <sup>@</sup>	Return on capital employed <sup>\$</sup>	Percentage return on capital employed	
				Net Profit/ Interest & Depreciation 5 (a)	Net Profit/ Interest 5 (b)	Depreciation 5 (c)								Net Profit/ Loss 5 (d)
(1)	(2)	(3)	(4)	5 (a)	5 (b)	5 (c)	5 (d)	(6)	(7)	(8)	(9)	(10)	(11)	(12)
	Development Corporation Limited			1740.58	201.77	107.59	1431.22	8765.14	-	1200.00	9924.51	11124.51	1632.99	14.68
<b>POWER</b>														
8.	Tenughat Vidyut Nigam Limited	2001-02 <sup>^</sup>	2014-15	9486.70	9021.68	9281.68	(-8816.66)	22400.06	2211.00	10000.00	(-48590.76)	117611.21	205.02	0.17
9.	Karanpura Energy Limited	\$\$	-	-	-	-	-	-	-	-	-	-	-	-
10.	Jharkhand Urja Vikas Nigam Limited	\$\$	-	-	-	-	-	-	-	-	-	-	-	-
11.	Jharkhand Urja Utpadan Nigam	\$\$	-	-	-	-	-	-	-	-	-	-	-	-
12.	Jharkhand Urja Sancharan Nigam Limited	\$\$	-	-	-	-	-	-	-	-	-	-	-	-
13.	Jharkhand Bijli Vitran Nigam Limited	\$\$	-	-	-	-	-	-	-	-	-	-	-	-
<b>Sector wise total</b>				9486.70	9021.68	9281.68	(-8816.66)	22400.06	2211.00	10000.00	(-48590.76)	117611.21	205.02	0.17
<b>SERVICES</b>														
14.	Jharkhand Tourism Development Corporation Limited	2004-05	2012-13	15.61	-	4.19	11.42	103.38	1.47	50.00	44.30	94.30	11.42	12.11
15.	Jharkhand State Beverages Corporation Limited	2012-13	2013-14	35.54	1.36	0.89	33.29	3283.98	-	500.00 (300.00)	33.29	533.29	34.65	6.50
16.	Jharkhand State Food and Civil Supplies Corporation Limited	\$\$	-	-	-	-	-	-	-	-	-	-	-	-
17.	Jharkhand State Minorities Finance Development Corporation	\$\$	-	-	-	-	-	-	-	-	-	-	-	-
<b>Sector wise total</b>				51.15	1.36	5.08	44.71	3387.36	1.47	550.00 (300.00)	77.59	627.59	46.07	7.34

Sl. No.	Sector & Name of the Company	Period of Accounts	Year in which finalised	Net Profit (+)/ Loss (-)			Turnover	Impact of Accounts Comments <sup>#</sup>	Paid up Capital	Accumulated Profit (+)/ Loss (-)	Capital employed <sup>@</sup>	Return on capital employed <sup>\$</sup>	Percentage return on capital employed	
				Net Profit/ Loss before Interest & Depreciation	Net Profit/ Interest	Depreciation								
(1)	(2)	(3)	(4)	5 (a)	5 (b)	5 (c)	5 (d)	(6)	(7)	(8)	(9)	(10)	(11)	(12)
<b>Total A (All sector wise working Government companies)</b>				12495.94	9224.81	9429.75	(-)/6158.62	44989.31	2284.58	15955.00 (2850.00)	(-)/34109.85	138572.12	3066.19	-
<b>B. Working Statutory Corporations</b>														
<b>Power</b>														
1.	Jharkhand State Electricity Board	2012-13	2014-15	(-)/174828.43	78337.52	13589.68	(-)/266755.63	261595.52	57250.00	-	(-)/1195770.40	(-)/1181.47	(-)/188418.11	-
<b>Sector wise total</b>				(-)/174828.43	78337.52	13589.68	(-)/266755.63	261595.52	57250.00	-	(-)/1195770.40	(-)/1181.47	(-)/188418.11	-
<b>Total B (All sector wise working Statutory corporations)</b>				(-)/174828.43	78337.52	13589.68	(-)/266755.63	261595.52	57250.00	-	(-)/1195770.40	(-)/1181.47	(-)/188418.11	-
<b>Grand Total (A + B)</b>				(-)/162332.49	87562.33	23019.43	(-)/272914.25	306584.83	59534.58	15955.00 (2850.00)	(-)/1229880.24	127390.65	(-)/185351.92	-

**Note: There is no non-working Government Company/Statutory Corporation in the State of Jharkhand.**

<sup>#</sup> Impact of accounts comments include the net impact of comments of Statutory Auditors and CAG and is denoted by (+) increase in profit/ decrease in losses and (-) decrease in profit/ increase in losses.

<sup>@</sup> Capital employed represents Shareholders Fund plus Long Term Borrowings as per requirement of schedule VI of the Companies Act, 1956. In case of JSEB capital employed represents net fixed assets + capital expenditure in progress + working capital as schedule VI is not applicable to JSEB.

<sup>\$</sup> Return on capital employed has been worked out by adding profit and interest charged to profit and loss account.

<sup>\$\$</sup> The company has not submitted first accounts so far.

<sup>^</sup> Accounts for the year 2002-03 to 2005-06 were received which were not finalised upto September 2014 have since been finalised.



**Annexure – 1.4**

**Statement showing financial position of Jharkhand State Electricity Board**

(Referred to in paragraph 1.14)

(Amount: ₹ in crore)

Particulars	2010-11	2011-12	2012-13
<b>A. Assets</b>			
Gross Block	2351.60	2500.79	3345.95
Less: Depreciation	1115.61	1232.97	1369.80
Net Fixed Assets	1235.99	1267.82	1976.15
Capital Expenditure in progress	1813.99	1752.26	1920.40
Assets not in use	2.29	2.29	2.29
Investment	200.27	179.07	373.16
Total Current Assets	4740.45	5450.15	6718.99
Deficit	6079.12	9290.15	11957.70
<b>Total A</b>	<b>14072.11</b>	<b>17941.74</b>	<b>22948.69</b>
<b>B. Liabilities</b>			
Borrowings for working Capital	218.98	274.93	305.53
Payment due on capital liabilities	4481.13	5383.28	6123.01
Capital liabilities	210.10	205.58	182.89
Funds from State Government	2958.65	2743.16	3183.19
Contributions, Grants and Subsidies	1570.38	1676.22	2426.73
Total Current liabilities	4632.87	7658.57	10727.34
<b>Total B</b>	<b>14072.11</b>	<b>17941.74</b>	<b>22948.69</b>
<b>C. Capital Employed*</b>	<b>3157.56</b>	<b>811.66</b>	<b>(111.80)</b>

\* Capital employed represents net fixed assets (including Capital Expenditure-in-Progress) plus working capital.

**Annexure – 1.5**  
**Statement of working results of Jharkhand State Electricity Board**  
*(Referred to in paragraph 1.14)*

(Amount: ₹ in crore)

Sl. No.	Particulars	2010-11	2011-12	2012-13
1.	a. Revenue Receipts	2010.69	2229.05	2615.96
	b. Revenue Subsidies and Grants, Other income	652.85	961.23	1377.84
	c. Total	2663.54	3190.28	3993.80
2.	Revenue expenditure (net of expenses capitalised including write off of intangible assets but excluding depreciation and interest)*	3036.58	3531.75	4149.90
3.	Gross surplus (+)/ deficit (-) for the year (Dr.)	(-) 373.04	(-) 341.47	(-)156.10
4.	Adjustment relating to previous year (Dr.)	97.26	(-) 2252.70	(-)1520.03
5.	Final gross surplus (+)/deficit (-) for the year (3+4)	(-) 275.78	(-) 2594.17	(-)1676.13
6.	Appropriation			
	A) Depreciation	50.99	117.37	135.90
	B) Interest on Capital / Loans	554.67	622.13	899.98
	C) Less Interest Capitalised	158.61	122.64	116.60
	D) Net Interest charged to revenue (B-C)	396.06	499.49	783.38
7.	Surplus (+) Deficit (-) before account of subsidy from State Government {5-6A-6D-1b (grant only)}	(-) 1172.83	(-) 3961.03	(-)3695.41
8.	Net surplus (+) Deficit (-) (5-6A-6D)	(-) 722.83	(-) 3211.03	(-)2595.41
9.	Total return on capital employed** (8+6D)	(-) 326.76	(-) 2711.54	(-) 1812.03
10.	Percentage of return on capital employed***	-	-	-

**NOTES:** \* Revenue expenditure does not include depreciation and interest on the loans.

\*\* Total return on capital employed represents net surplus/deficit plus total interest charged to profit and loss account (less interest on capital)

\*\*\* Percentage of return on Capital Employed not calculated as there was deficit in all the year.

**Annexure – 1.6**  
**Statement showing investments made by State Government in PSUs whose accounts are**  
**in arrears**

(Referred to in paragraph 1.20)

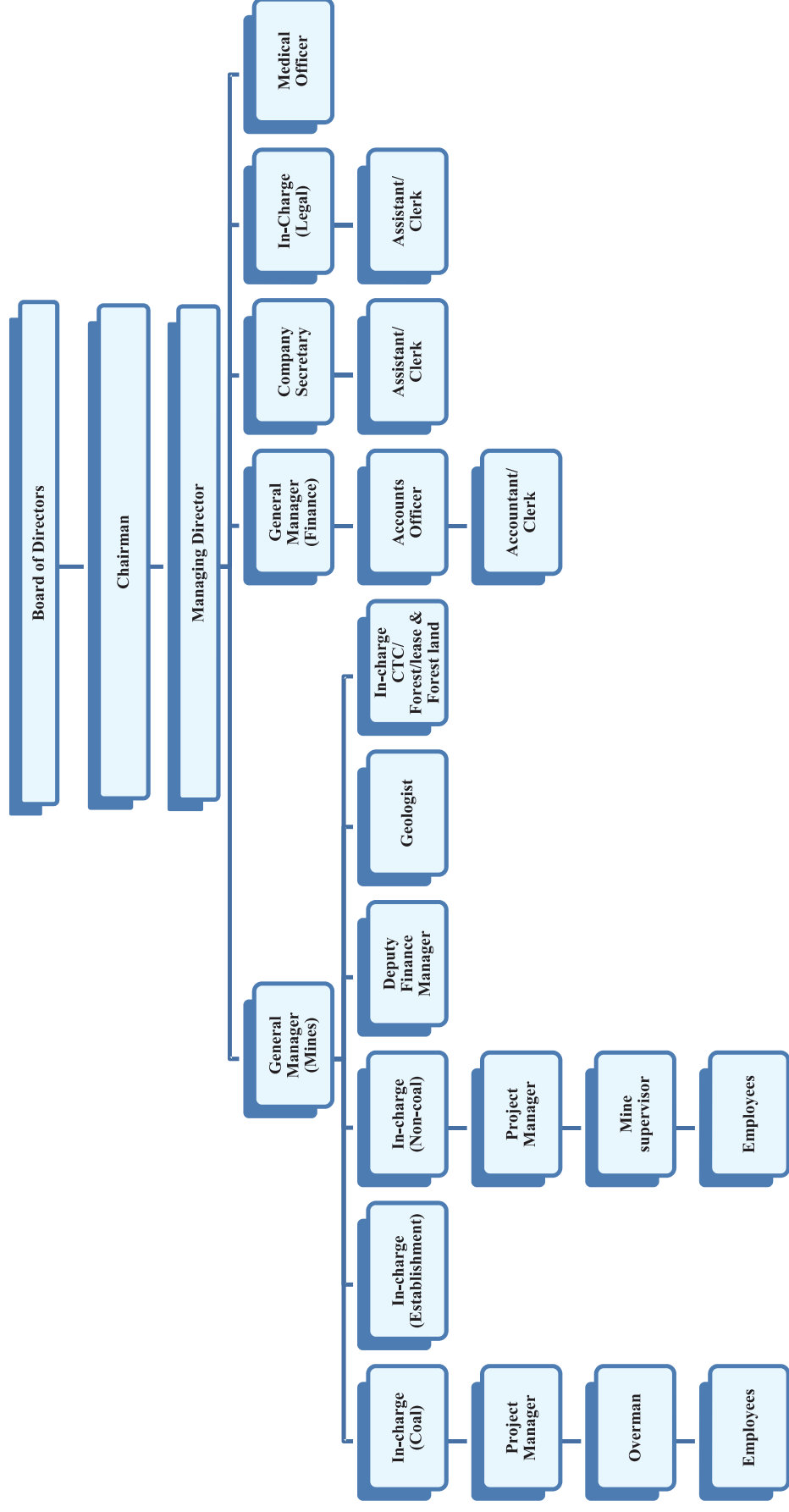
(₹ in lakh)

Sl No.	Name of PSU	Year upto which accounts finalised	Paid up capital as per latest finalised accounts*	Period during which accounts are in arrears	Investment made by State Government during the years for which accounts are in arrears			
					Equity	Loan	Grant	Others
<b>Working Companies/Corporations</b>								
<b>A. Government companies</b>								
1.	Jharkhand Hill Area Lift Irrigation Corporation Limited	2009-10	500.00	2010-11	-	-	-	-
				2011-12	-	-	-	-
				2012-13	-	-	542.00	-
				2013-14	-	-	571.00	-
2.	Jharkhand Tourism Development Corporation Limited	2004-05	50.00	2005-06	25.00	-	-	-
				2006-07	-	-	-	-
				2007-08	-	-	-	-
				2008-09	-	-	-	-
				2009-10	25.00	-	-	-
				2010-11	50.00	-	-	-
				2011-12	100.00	-	-	-
				2012-13	50.00	-	-	-
				2013-14	25.00	-	-	-
3.	Greater Ranchi Development Agency Limited	2012-13	2500.00 (2450.00)	2013-14	1000.00	-	-	-
4.	Tenughat Vidyut Nigam Limited	2005-06	10500.00	2006-07	-	800.00	-	-
				2007-08 to 2013-14	-	-	-	-
5.	Jharkhand State Food and Civil Supplies Corporation Limited	-	-	2010-11	500.00	-	9400.00	-
				2011-12	-	-	24396.00	-
				2012-13	-	-	13500.00	-
				2013-14	-	-	-	-
6.	Jharkhand Industrial Infrastructure Development Corporation Limited	2012-13	1000.00 (100.00)	2013-14	200.00	-	-	-
	<b>Total (A)</b>		<b>14550.00 (2550.00)</b>		<b>1975.00</b>	<b>800.00</b>	<b>48409.00</b>	<b>-</b>
<b>B. Statutory corporation</b>								
1.	Jharkhand State Electricity Board	2012-13	-	2013-14	-	17534.00	96709.00	-
	<b>Total(B)</b>				<b>-</b>	<b>17534.00</b>	<b>96709.00</b>	<b>-</b>
	<b>Total (A)+(B)</b>		<b>14050.00 (2550.00)</b>		<b>1975.00</b>	<b>18334.00</b>	<b>145118.00</b>	<b>-</b>

(Source: Data furnished by Government companies/Statutory corporation)

\* The figures appearing in brackets represent Share Application Money.

**Annexure – 2.1**  
**Organisational Structure of Jharkhand State Mineral Development Corporation Limited**  
*(Referred to in paragraph 2.2)*



**Annexure-2.2**

**Statement showing working results of the Company during the years 2009-10 to 2013-14**  
(Referred to in paragraph 2.6)

(₹ in crore)

Particulars	Provisional					Total
	2009-10	2010-11	2011-12	2012-13	2013-14	
<b>A. Income</b>						
Sale of minerals	51.27	50.08	19.00	0.69	0.07	121.11
Coal trading	52.26	45.91	61.57	93.16	62.34	315.24
Interest earned	10.64	10.87	10.45	10.61	12.00	54.57
<b>Total</b>	<b>114.17</b>	<b>106.86</b>	<b>91.02</b>	<b>104.46</b>	<b>74.41</b>	<b>490.92</b>
<b>B. Expenditure</b>						
Coal trading	50.09	43.92	59.08	89.55	59.97	302.61
Production (minerals)	18.37	16.88	5.66	0.25	0.07	41.23
Royalty/Dead rent	4.97	4.58	1.83	0.20	0.18	11.76
Other expenses	11.39	13.66	13.55	12.16	12.04	62.80
<b>Total</b>	<b>84.82</b>	<b>79.04</b>	<b>80.12</b>	<b>102.16</b>	<b>72.26</b>	<b>418.40</b>
<b>C. Profit/Loss</b>	<b>29.35</b>	<b>27.82</b>	<b>10.90</b>	<b>2.30</b>	<b>2.15</b>	<b>72.52</b>

(Source: As per information furnished by the Company)

**Annexure 2.3**  
**Statement showing target vis-a-vis achievement of milestones of the MoC, GoI**  
*(Referred to in paragraph 2.11)*

Name of Coal Blocks	Milestone in No. of Months	Date of Allocation	Purchase of Geological Report (GR)	Preparation of GR <sup>1</sup>	Mining plan approval	Forest clearance	Environment clearance	Grant mining lease	Land acquisition	Grant permission for Operating	Production <sup>2</sup>	
												27 months of Allocation
<b>Coal Blocks allocated under Government Companies Dispensation Route</b>												
Patratu (UG <sup>3</sup> )	Scheduled date	-	-	25.09.09	25.05.10	25.03.11	25.03.11	25.09.11	25.09.12	25.02.14	25.03.14	
	Achievement/delay in months	25.06.07	-	62 months	54 months	45 months	45 months	39 months	26 months	09 months	08 months	
Rabodh (OCP <sup>4</sup> )	Scheduled date		09.08.07	-	25.02.08	10.02.09	10.02.09	10.08.09	10.08.10	25.01.11	10.02.11	
	Achievement/delay in months	25.06.07	June 2012 (59 Months)	-	81 months	69 months	69 months	63 months	51 months	46 months	45 months	
Pindra devipur (Mixed <sup>5</sup> )	Scheduled date		-	02.11.08	02.07.09	02.05.10	02.05.10	02.11.10	02.11.11	02.04.12	02.05.12	
	Achievement/delay in months	02.08.06	-	72 months	64 months	54 months	54 months	48 months	36 months	31 months	30 months	
Latehar (OCP)	Scheduled date		-	02.11.08	02.07.09	02.05.10	02.05.10	02.11.10	02.11.11	02.04.12	02.05.12	
	Achievement/delay in months	02.08.06	-	72 months	64 months	54 months	54 months	48 months	36 months	31 months	30 months	
Jageshwar & khas jageswar (OCP)	Scheduled date		26.05.08	-	26.01.09	02.11.09	02.11.09	26.05.10	26.05.11	26.10.11	11.11.11	
	Achievement/delay in months	11.04.08	June 2012 (50 months)	-	70 months	60 months	60 months	54 months	42 months	37 months	36 months	
Sugia (OCP)	Scheduled date		15.03.06	-	15.11.06	15.09.07	31.07.07	31.03.08	31.03.09	30.08.09	31.09.09	
	Achievement/delay in months	31.01.06	06.09.06 (6 months)	-	04.09.08 (22 months)	86 months	02.02.09 (21 months)	81 months	69 months	63 months	62 months	
Burhakhap (OCP)	Scheduled date		-	10.04.08	31.12.08	31.10.09	31.10.09	30.04.10	30.04.11	30.09.11	31.10.11	
	Achievement/delay in months	31.01.06	-	06.06.12 (50 months)	71 months	61 months	61 months	55 months	43 months	38 months	33 months	
Rauta (OCP)	Scheduled date		-	31.03.08	31.12.08	31.10.09	31.10.09	30.04.10	30.04.11	30.09.11	31.10.11	
	Achievement/delay in months	30.01.06	-	80 months	71 months	61 months	61 months	55 months	43 months	38 months	33 months	
<b>Coal Block transferred from Coal India Limited</b>												
Jagaldaga (OCP)	Scheduled date		-	31.10.96	16.05.97	16.03.98	16.03.98	16.09.98	16.09.99	16.02.00	16.03.00	
	Achievement/delay in months	16.09.96	-	Prepared	20.10.97 (5 months)	200 months	28.05.08 (122 months)	02.02.98	182 months	177 months	176 months	

(Source: Data compiled from the information furnished by the Company)

<sup>1</sup> For partly explored and unexplored coal blocks, milestones for preparation of GR is 27 months from the date of allocation considering three months period of application of prospecting license and 24 months period of detailed exploration and for preparation of GR. Patratu, Latehar, Pindra-Devipur, Rauta and Burhakhap were either unexplored or partly explored.

<sup>2</sup> Milestones for grant of permission for operating and production in respect of open cast mine (OC) was 41 and 42 months and in respect of underground mine (UG) it was 53 and 54 months respectively from the date of GR

<sup>3</sup> Underground project

<sup>4</sup> Open Cast Project

<sup>5</sup> Underground and Open Cast Project

**Annexure 2.4**  
**Statement showing status of statutory clearances of mineral mines**  
*(Referred to in paragraph 2.14)*

Statutory clearances	Date of approval <sup>6</sup>									
	Benti Bagda	Salhan	Jyoti Pahari	Sirboi Kyanite	Chandula – Simalgoda	Mahugain - Tulbula	Manasoti	Chelangi <sup>7</sup>	Semra Salatua	
Mining Plan	22.08.2002	-	21.03.2007	18.07.2000	-	24.08.1999	-	10.01.2011	-	
Renewal of Mining Lease		-	-	-	17.03.2011 (Simalgora) 09.01.2012 (Chandula)	-	-	19.01.2011	-	
Forest Clearance		-	Not required as no forest land was involved.	-	-	-	-	Not required as no forest land was involved.	10.06.1998	
Environmental Clearance		-	-	-	-	-	-	-	-	
NOC from SPCB		-	-	-	-	-	-	-	-	

*(Source: Data compiled from the information furnished by the Company)*

<sup>6</sup> There were no milestones fixed for obtaining of statutory clearances and development of mines.

<sup>7</sup> New lease granted in 19.01.2011.

**Annexure-2.5**  
**Statement showing grant of mining lease and their renewal in respect of mineral mines as**  
**on 31 March 2014**

*(Referred to in paragraph 2.15)*

Name of the lease area	District	Mineral	Lease area (in acres)	Date of grant/renewal of lease area	Period for M.L (in Year)	Date of filing for M.L renewal application	Period of renewal (in Year)	Present status
Semra Salatua	Palamau	Limestone	2578.28	03.04.1976	20	02.04.1995	20	Not renewed
Benti Bagda	Ranchi	Limestone	334.87	05.05.1976	20	04.05.1995	20	Not renewed
Salhan	Ranchi	Limestone	257.03	05.05.1976	20	04.05.1995	20	Not renewed
Jyoti Pahari	East Singhbhum	Kyanite	50.25	19.08.1984	20	14.08.2003	20	Not renewed
Sirboi	East Singhbhum	Kyanite	168.40	19.08.1984	20	14.08.2003	20	Not renewed
Chandula-Simalgoda	Sahebganj	Stone	172.80	17.03.2011	10	-	-	Granted <sup>8</sup>
				09.01.2012				
Mahugain - Tulbula	Palamau	Graphite	552.15	14.10.1976	20	13.10.1995	20	Not renewed
Manasoti	Palamau	Graphite	733.03	13.09.1979	20	21.08.1998	20	Not renewed
Chelangi (New lease)	Khunti	Granite	2.00	19.01.2011	20	-	-	Granted
<b>Total area</b>			<b>4848.81</b>					

*(Source: Data compiled from the records of the Company)*

<sup>8</sup> The renewal of lease for Simalgoda (86.80 acres) and Chandula (86 acres) was granted on 17.03.2011 and 09.01.2012 respectively.



**Annexure - 3.1**

**Statement showing paragraphs/Performance Audits for which replies were not received**

(Referred to in paragraph 3.7.1)

Sl. No.	Name of Department	2008-09		2009-10		2010-11		2011-12		2012-13	
		No. of paras in Audit Report	No. of paras for which replies were not received	No. of paras in Audit Report	No. of paras for which replies were not received	No. of paras in Audit Report	No. of paras for which replies were not received	No. of paras in Audit Report	No. of paras for which replies were not received	No. of paras in Audit Report	No. of paras for which replies were not received
1.	Energy	4	4	6	6	2	2	3	3	4	4
2.	Forest & Environment	1	1	-	-	-	-	1	1	1	1
3.	Home	-	-	1	1	1	1	1	1	-	-
4.	Mines & Geology	-	-	-	-	1	1	-	-	-	-
5.	Industry	-	-	-	-	-	-	-	-	1	1
6.	Water Resources, Industry, Energy, Home, Tourism, Forest & Environment, Urban Development, and Mines & Geology	-	-	-	-	-	-	1	1	-	-
	<b>Total</b>	<b>5</b>	<b>5</b>	<b>7</b>	<b>7</b>	<b>4</b>	<b>4</b>	<b>6</b>	<b>6</b>	<b>6</b>	<b>6</b>

**Annexure – 3.2**  
**Statement of department wise outstanding Inspection Reports (IRs)**  
*(Referred to in paragraph 3.7.3)*

Sl. No.	Name of Department	No. of PSUs	No. of outstanding IRs	No. of outstanding paragraphs	Year from which paragraphs outstanding
1.	Energy	2	345	1123	2005-06
2.	Forest & Environment	1	27	103	2006-07
3.	Mines and Geology	1	4	18	2010-11
4.	Tourism	1	7	36	2007-08
5.	Industry	2	6	22	2008-09
6.	Home	1	12	59	2006-07
7.	Water Resources	1	18	52	2006-07
8.	Urban Development	1	2	12	2009-10
<b>Total</b>		<b>10</b>	<b>421</b>	<b>1425</b>	

**Annexure – 3.3**  
**Statement of department wise draft paragraphs replies to which were awaited**  
*(Referred to in paragraph 3.7.3)*

Sl. No.	Name of Department	No. of draft paragraphs	Period of issue
1.	Energy	3	May to July 2014
2.	Forest & Environment	1	June 2014
3.	Industry	1	June 2014
	<b>Total</b>	<b>5</b>	