

Appendix -1.1

(Referred to in paragraph 1.7; Page 4)

Statement showing Outstanding Inspection Reports/Paragraphs

(₹ in crore)

Year	General Sector			Social Sector			Economic Sector		
	No. of IRs	No. of Paras	Amount	No. of IRs	No. of Paras	Amount	No. of IRs	No. of Paras	Amount
Upto 2005-06	257	699	242.51	879	2612	1324.9	751	2682	1739.11
2006-07	7	49	703.54	62	316	37529.51	42	156	283.92
2007-08	4	16	365.30	33	186	23483.86	21	136	257.04
2008-09	28	97	11465.55	75	320	31174.67	24	120	235.18
2009-10	17	93	5551.80	58	276	61340.26	41	161	369.52
2010-11	11	53	5440.75	77	392	63950.60	34	169	388.71
2011-12	12	69	4791.07	101	543	110439.44	73	353	731.91
2012-13	30	148	16510.67	120	718	413737.91	81	608	1433.51
2013-14	14	61	12935.85	104	510	57670.25	74	543	1227.47
Total	123	586	57764.53	630	3261	799326.50	390	2246	4927.26

(Source: Information furnished by different sectors of this office)

Appendix - 1.2

(Referred to in paragraph 1.7; Page 4)

Statement showing various types of irregularities in outstanding paragraphs of Inspection Reports

(I) General Sector

Year	No. of IRs	Avoidable/excess expenditure	Wasteful/Infructuous expenditure	Expenditure incurred without sanction from competent authority	Diversion of funds from one scheme to another or from one object head to another	Drawal of funds at the fag end of financial year with a view to avoiding lapse of funds	Incurring of expenditure on banned items or items of special nature without approval of competent authority	Purchase of stores/ stock in excess of actual requirements with a view to avoiding lapse of funds	Idle investment/ idle establishment/ blockade of funds	Payment of idle wages to staff	Non-achievement of objectives/unfruitful expenditure	Miscellaneous observations	Total paragraphs
2006-07	7	9			1	1	1	1	1	0	8	27	49
2007-08	4	2			0	1	0	1	2	0	2	8	16
2008-09	28	3			1	2	2	3	4	2	13	67	97
2009-10	17	8		1	2	1	2	0	5	1	9	64	93
2010-11	11	9		0	1	1	1	1	1	0	10	29	53
2011-12	12	4		1	0	2	0	4	2	2	7	47	69
2012-13	30	24	3	2	3	4	3	2	9	3	16	79	148
2013-14	14	3	0	1	1	1	1	0	7	2	0	45	61
Total	123	62	3	5	9	13	10	12	31	10	65	366	586

(Source: Information furnished by different sectors of this office)

(II) Social Sector

Year	No. of IRs	Fraud/misappropriation/ embezzlement/ losses detected in audit	Recoveries & instances of Overpayments detected in audit	Violation of contractual obligations and undue favours to contractors	Avoidable/excess expenditure	Wasteful/inflictious expenditure	Drawal of funds at the fag end of financial year with a view to avoid loss of funds	Purchase of stores/ stock in excess of actual requirements with a view to avoid loss of funds	Idle investment/ idle establishment/ blockade of funds	Payment of idle wages to staff	Delays in commissioning of equipment/ idle equipment and consequences owing thereto	Non-achievement of objectives/unfruitful expenditure	Miscellaneous observations	Total paragraphs
2006-07	62	0	0	5	36	17	26	30	40	5	4	44	109	316
2007-08	33	0	0	0	15	11	17	18	0	0	0	0	125	186
2008-09	75	0	0	0	48	26	19	25	38	0	0	23	141	320
2009-10	58	0	0	0	11	6	23	5	29	0	0	44	158	276
2010-11	77	0	0	0	40	8	26	31	2	0	0	0	285	392
2011-12	101	18	32	17	85	2	0	0	48	0	0	0	341	543
2012-13	120	60	63	50	12	1	0	0	80	33	0	33	278	718
2013-14	9	2	1	0	9	0	2	9	9	0	0	5	7	44
Total	535	80	96	72	365	70	113	118	246	38	4	149	1444	2795

(Source: Information furnished by different sectors of this office)

(III) Economic Sector

Year	No. of IRs	Excess Payment	Extra Cost	Short/Non Recovery	Undue Benefit	Doubtful Expenditure	Irregular Payment due to non Adherence to rules/clauses	Irregular Award of work	Unfruitful/inflictious expenditure	Blockade of fund	Miscellaneous observations	Total paragraphs
2006-07	42	5	9	24	21	5	21	28	12	21	9	156
2007-08	21	4	9	25	19	5	23	7	20	12	13	136
2008-09	24	6	7	16	16	3	10	16	21	8	16	120
2009-10	41	11	9	25	22	6	25	12	17	19	14	161
2010-11	34	12	10	24	5	23	23	14	25	23	10	169
2011-12	73	22	24	44	49	11	47	44	28	63	21	353
2012-13	81	37	43	75	79	19	81	49	108	35	82	608
2013-14	74	34	37	65	75	17	71	44	96	31	73	543
Total	390	131	148	298	286	89	301	214	327	212	238	2246

(Source: Information compiled by Audit)

The number of outstanding Inspection Reports and paragraphs prior to year 2006-07 are 3030 and 12086 respectively. This includes 123 IRs and 586 paragraphs of General Sector, 630 IRs and 3261 paragraphs of Social Sector and 39 IRs and 2246 paragraphs of Economic Sector.

Appendix-2.1.1*(Referred to in paragraph 2.1.7.1 (a), page 12)***Status of Miscellaneous Public Works Advances in test checked divisions***(₹ in lakh)*

Sl. No	Name of the Divisions	Year from which pending	Number of items	Amount
1	WRD, Kanker Division	1954-55	132	66.87
2	WRD, Div.-2 Rudri, Dhamtari	1975-76	60	54.43
3	WRD, Kharang Division, Bilaspur	Not provided	43	67.38
4	WRD, Bemetra Division	Not provided	55	27.69
5	WRD, Water Management Division No-1, Raipur	2013-14	81	361.00
6	WRD, Tandula Division, Durg	2009-10	164	26.93
7	Hasdeo RBC WM Barrage Div Rampur (Korba)	1964-65	181	198.23
8	WRD, Rajnandgaon	1987-88	128	103.04
9	WRD, Barrage Div Dongargaon	2008-09	1	0.12
10	WRD, Kawardha	1981-82	76	30.03
11	WRD, Raipur	1977-78	62	524.02
12	WRD Dhamtari	2003-04	9	16.80
13	WRD Maniyari Dn. Mungeli	1992-93	10	2.95
14	WRD, Champa	1994-95	16	1.43
15	WRD TDPP Jagdalpur	1981-82	43	289.55
16	WRD Raigarh	1960-61	122	82.76
17	WRD Baikunthpur	1981-82	295	52.57
18	WRD Dn. No.2 Ramanujganj	Not provided	141	305.39
19	WRD Dn. No.-1 Ambikapur	2010-11	361	18.62
Total			1980	2229.81

Appendix-2.1.2*(Referred to in paragraph 2.1.7.1 (b), page 12)***Status of Lapsed Deposit pending to be credited in Government account in test checked division***(₹ in lakh)*

Sl. No.	Name of the Division	Status of register	Year from which deposit pending	Number of items	Amount
1	WRD, Kharang Division, Bilaspur	Maintained	Prior to 2011-12	Not available	165.43
2	WRD, Div.-2 Rudri, Dhamtari	Maintained	Prior to 2011-12	25	10.67
3	WRD, Water Management Division No-1, Raipur	Not maintained	Not available	Not available	Record not maintained
4	WRD, Kondagaon	Not maintained	Not available	Not available	Record not maintained
5	WRD, MRP-Ph-2, Raipur	Maintained	2006-07 to 2009-10	10	7.24
6	Hasdeo RBC WM Barrage Div Rampur (Korba)	Maintained	1982-83	256	72.98
7	WRD, Rajnandgaon	Maintained	1974-75	119	159.54
8	WRD, Kawardha	Maintained	1977-78	227	137.44
9	WRD, Raipur	Maintained	1986-87	30	9.77
10	WRD Dhamtari	Maintained	Prior to 2011-12	4	30.17
11	WRD Maniyari Division Mungeli	Maintained	Prior to 2011-12	251	193.06
12	WRD Jagdalpur	Maintained	Prior to 2011-12	Not available	77.75
13	WRD Raigarh	Not Maintained	Not available	Not available	Record not maintained
14	WRD Baikunthpur	Maintained	Prior to 2011-12	191	109.86
15	WRD Division No.-2, Ramanujganj	Not Maintained	Not available	Not available	Record not maintained
16	WRD Ambikapur	Maintained	Prior to 2011-12	189	154.82
Total				1302	1128.73

Appendix-2.1.3

(Referred to in paragraph 2.1.7.1 (c), page 13)

Status of Reconciliation with Treasury (Form-51)

(₹ in crore)

Sl. No	Name of division	Period up to which Form-51 prepared	Difference between treasury and division record	
			Cheque drawal (Part-II)	Remittances (Part-III)
1	Tandula WRD Div. Durg	March 2014	17.96	18.88
2	WRD, Bemetara Div.	March 2014	0.43	7.00
3	WRD, Kanker Div.	February 2012	2.36	5.51
4	WRD, Dn.-2, Rudri	November	0.09	0.10
5	WRD, MRP-II, Raipur	January 2014	1.98	0.26
6	WRD, Water Management Div. -1	November	0.24	7.91
7	WRD, Kharang, Bilaspur	January 2014	3.12	3.16
8	WRD, Kondagaon	March 2014	0.85	6.83
9	Kelo Project Survey Div, Raigarh	January 2014	2.64	--
10	Kelo Project Construction Div, Lakha, Kharsia	February 2014	0.52	0.0001
11	WRD Survey, Research & Construction Barrage Div. Kharsiya	October 2013	0.004	0.05
12	Hasdeo RBC WM Barrage Div Rampur (Korba)	May 2009	--	--
13	WRD, Rajnandgaon	December 203	1.78	7.89
14	WRD, Barrage Div Dongargaon	January 2014	0.60	--
15	WRD, Kawardha	December	1.52	0.03
16	WRD, Raipur	March 2014	0.04	3.87
17	WRD Dhamtari	July 2013	0.95	0.0034
18	Maniyari WRD Mungeli	May 2013	1.03	3.43
19	WRD Janjgir Chapma	February 2014	0.21	1.80
20	WRD TDPP Jagdalpur	March 2014	0.34	-0.57
21	WRD Raigarh	March 2014	-0.2	6.72
22	WRD Baikunthpur	October 2011	0.15	3.46
23	WRD Ramanujganj	March 2012	-0.74	7.12
24	WRD Ambikpur	March 2013	0.39	0.30
Total			36.264	83.7535

Appendix-2.1.4

(Referred to in paragraph 2.1.7.2, page 13)

Statement showing unauthorized expenditure incurred diverting the budget provisions

Sl. No.	Name of division	Expenditure (₹ in crore)	Fund Provided for	Purpose for which diverted
01.	EE, WRD Tandula, Durg	2.14	Godhi Distributory Main canal	Remodeling and lining of minor of Godhi Distributory
02.	EE, WRD, Kanker	0.22	Construction of Anicut (Major Head : 4702)	Annual repair of minor canal and headwork
03.	EE, MRP Dam-2, Rudri	1.41	Construction of Anicut (Major Head : 4702)	Execution of works under MRP complex
04.	EE, MRP Phase-2, Raipur	5.46	Construction of Rajiv Samoda Nisda Diversion scheme without having provision in the scope of work.	Construction of crated pitching, dry stone pitching and repair of canal between RD 0 to 1920 mt.
05.		15.37		Miscellaneous work
06.	EE, WM Division-1, Raipur	1.02	Construction of Dulna diversion scheme	Construction of E-in-C office building
07.		3.63	Construction of Mandhar Branch Canal under AIBP.	Construction of Tar road on service bank of Mandhar branch canal
08.		0.92	Construction of Rajiv Samoda Nisda Diversion scheme.	Organising exhibition on State formation day
09.		2.03	Construction of Raor Anicut without having sanctioned under the original scope of work.	Construction of approach road towards Raor and Koliyarih village (3.60 km)
10.	EE, WRD, Ramanujganj	1.63	Construction of MI schemes	For Vikash Yatra
11.	EE, WRD, Ambikapur	0.23	(Capital head)	--do--
12.	EE, TDPP, Jagdalpur	0.88	Construction of Irikpal anicut	For protection work not included in the original scope of work.
Total		34.94		

Appendix-2.1.5

(Referred to in paragraph 2.1.8 (b), Page 15)

Statement showing details of utilisation of irrigation potential

Sl. No.	Name of division	Schemes	Percentage utilisation of irrigation potential				
			2009-10	2010-11	2011-12	2012-13	2013-14
1	WRD, Kharang	Minor Schemes-25	61	61	63	57	62
		Major Scheme-01 (Kharang Tank)	<i>Utilisation was more than created potential</i>				
2	WRD, Bemetera	Minor Schemes-168	16	39	45	46	51
3	WRD, Kanker	Minor Schemes-86, Medium Schemes-02	47	39	38	47	48
4	MRP Dam-2, Rudri	Minor Schemes-04	64	82	64	64	63
		Major Schemes-02 (part of MRP and Sondoora)	<i>Utilisation was more than 90 per cent</i>				
5	WM-1, Raipur	Major Schemes-01 (part of MRP)	75	99	76	94	76
		Minor Schemes-02	<i>Utilisation was more than created potential</i>				
6	WRD, Tandula, Durg	Minor Schemes-198	35	60	62	60	60
		Major Scheme-01 (Tandula) Medium Scheme-02	<i>Utilisation of Irrigation Potential is more than 90 per cent</i>				
7	WRD, Kondagaon	Minor Scheme-34	19	14	17	13	26
8	Hasdeo RBC WM Barrage Div Rampur (Korba)	Major Scheme-1 (Hasdeo Minimata)	86	95	91	93	91
9	WRD, Rajnandgaon	Medium Scheme-3, Minor Scheme- 207	37	62	63	63	68
10	WRD, Barrage Div Dongargaon	Medium Scheme-1	64	64	64	69	60
11	WRD, Kawardha	Medium Scheme-5, Minor Scheme-103	NA	NA	46	55	56
12	WRD, Raipur	Medium Schemes-1, Minor Schemes-83	66	69	68	70	76
13	E.E.WRD Dhamtari	Major Schemes-01 (part of Pari project)	48	48	47	60	62
		Minor Schemes-31	59	59	33	54	59
14	E.E. Maniyari Division, Mungeli	Major Schemes-01 (Maniyari Tank)	87	<i>Utilisation more than created potential</i>			
		Minor Schemes-36	59	60	92	80	96
15	EE, WRD, Champa	Minor Schemes-14	49	64	64	51	NA
16	E.E.WRD, TDPP, Jagdalpur	Medium- Schemes-1	11	20	51	58	47
		Minor Schemes-60	15	19	11	9	16
17	E.E. WRD Raigarh	Medium Schemes-4	64	72	66	61	NA
		Minor Schemes-135	42	36	34	47	NA
18	E.E. WRD Baikunthpur	Medium Schemes-2	25	14	6	44	72
		Minor Schemes-81	19	32	24	31	26
19	E.E.WRD Division No.2 Ramanujganj	Minor Schemes-58	41	17	46	66	89
20	E.E.WRD, Division No.-1, Ambikapur	Medium Schemes-2	39	29	72	71	40
		Minor Schemes-81	24	18	38	76	49
21	MRP Phase-II, Raipur	Medium Schemes-01	<i>Utilisation was more than created potential</i>				
22	Kelo Project Survey Div, Raigarh	One major project (Kelo) is under construction hence, irrigation potential not yet created					
23	Kelo Project Construction Div, Lakha, Kharsia						
24	WRD Survey, Research & Construction Barrage Div. Kharsiya						

Appendix-2.1.6

(Referred to in paragraph 2.1.9.2 (a), Page 17)

Statement showing details of projects delayed due to want of land acquisition

Sl. No.	Name of project	Year of sanction	Design potential (in ha)	Target date of completion	Initial cost	Revised cost	Up to date expenditure	Progress
					(₹ in crore)			
01.	Rajiv Samoda Nisda Diversion	2001-02	30,000	June 2010	103.20	212.16	151.90	Head work completed and canal work pending for want of LA
02.	Dudhawa Right Bank Canal	2002-03	1214	August 2007	4.57	26.86	12.19	Only main canal work completed, other work stopped due to pending LA case and increase in cost.
03.	Rajpur diversion scheme	2007-08	190	Feb. 2010	1.70	3.06	1.15	Delay in execution of canal work due to pending LA case and non receipt of revised AA.
04.	Litipara Diversion Scheme	2007-08	71	June 2010	0.71	1.20	0.81	Head work completed and canal work pending for want of LA
05.	Maniyari Barrage Scheme	2007-08	1990	July 2008	19.22	43.75	28.40	Scheme incomplete due to pending LA case
06.	Pathariya Barrage Scheme	2011-12	1925	March 2015	35.86	--	7.97	Land acquisition case not prepared even after lapses of 12 months of AA
07.	Kalarjeora Diversion Scheme	2010-11	101	June 2012.	1.52	--	0.76	Headwork completed. Land acquisition case not prepared even after lapses of 38 months of AA and 17 months from the date of issue of work order for construction of canal
08.	Sahaspur Diversion Canal	2011-12	910	December 2013	12.66	--	0.44	Land acquisition case is under preparation. The progress of headwork is zero even after lapses of seven months of stipulated completion period. Technical sanction also not obtained.
09.	Sone Diversion Scheme	2006-07	2400	Sep. 2009	5.34	--	3.04	Head work completed and canal work pending for want of LA
10.	Losanga Tank Scheme	1981-82	264	July 2005	0.24	1.99	2.23	Non acquisition of forest and private land and non obtaining of revised AA
11.	Kotchhal Tank Scheme	2003-04	189	June 2010	0.56	1.22	1.94	Non acquisition of private land. Non obtaining of revised AA even after lapses of 11 years
12.	Khutpali Diversion Scheme	2007-08	3052	August 2009	29.53	86.47	2.73	--
13.	Saken Nalla Diversion Scheme	2009-10	910	March 2012	8.31	--	5.16	Head work not started even after lapses of two years from the date of issue of work order due to protest by villagers and though 80 per cent of the canal work was completed, the initial reach of the canal was not started by the contractor.
14.	Soraipatera diversion scheme	2007-08	400	March 2012	2.57	7.41	3.77	Head work completed and no canal work executed for want of LA case

Sl. No.	Name of project	Year of sanction	Design potential (in ha)	Target date of completion	Initial cost	Revised cost	Up to date expenditure	Progress
					(₹ in crore)			
15.	Koilori diversions scheme	2011-12	900	March 2012	5.43	14.72	4.73	Head work completed and no canal work executed for want of LA case (Revised AA awaited).
16.	Rengaboard diversion scheme	2011-12	1620	March 2013	16.90	--	8.30	Head work completed and no canal work executed for want of LA case
17..	Sevaikachha anicut	2012-13	130	December 2013	2.60	--	0.77	Head work 70 per cent completed and no canal work started for want of LA cases.
18	Domgarh diversion scheme	2012-13	102	June 2014	2.30	--	1.01	Head work completed and no canal work executed for want of LA case
19.	Monipuri tank	2005-06	125	March 2012	1.54	--	1.21	Head work 60 per cent completed and canal work only 60 per cent, delayed for want of LA cases.
20.	Mohpara tank	2004-05	567	June 2012	4.86	10.32	6.43	Head work 80 per cent completed and canal work only 70 per cent, delayed for want of LA cases (Revised AA awaited)
21.	Putpura diversion scheme	2005-06	551	June 2012	2.72	5.01	2.44	Head work completed and 70 per cent canal work executed, delayed for want of LA case
22.	Kelo project	2003-04	22810	March 2012	365.66	598.91	449.72	Head work 90 per cent completed and canal progress was only 70 per cent. Delay due to pending LA cases.
Total			70421		628.00	1013.08	697.10	

Appendix-2.1.7
(Referred to in paragraph 2.1.9.2 (b), Page 18)

Status of projects awaiting forest clearance

Sl. No.	Stage of pendency (with whom pendency)	Number of cases pending	Year of sanction (No. of projects)
01.	Government of India, Forest and Environment Department, New Delhi	02	2002 (1) and 2009 (1)
02.	Government of India, Forest and Environment Department, Zonal office, Bhopal	07	1980 (2), 1990 (1), 2005 (1) and 2006 (3)
03.	Government of Chhattisgarh, Forest Department, Raipur	01	2002 (1)
04.	Chief Conservator of Forest, Raipur	04	1976 (1), 1988 (1), 1988 (1) and 2003 (1)
05.	Conservator of Forest/District Forest Officer	25	1976 (1), 1977 (2), 1979 (1), 1980 (6), 1982 (1), 2005 (2), 2007 (1), 2010 (1), 2012 (2), 2013 (8).
06.	Executive Engineer (Division level), Water Resources Department	47	1976 (2), 1977 (2), 1980 (4), 1981 (3), 1983 (3), 1990 (3), 2002 (2), 2003 (2), 2004 (2), 2006 (4), 2007 (4), 2008 (4), 2009 (1), 2010 (1), 2011 (1) and 2013 (9)
Total		86	

Source: Information provided by Department and compiled by audit.

Appendix-2.1.8

(Referred to in paragraph 2.1.9.2 (b), page18)

Statement showing details of works taken up without obtaining forest clearance

Sl. No.	Name of project	Design potential (in ha)	Date of approval	Date of initiation for clearance	Delay (in months)	Up to date expenditure (₹ in crore)	Current status
01.	Murgaon Diversion scheme	223	February 2006	March 2008	24	2.37	Pending with DFO and no clearance received. Further a proposal for acquisition of private land submitted in May 2008 and was also pending.
02.	Kerawahi Tank scheme	328	January 2006	November 2007	22	3.13	Pending with Forest and Environment Department, Zonal Office, Bhopal and no clearance received.
03.	Nahakasa Tank project	440	July 2008	August 2009	13	2.50	Proposal submitted after 13 months of AA. Further clearance received in December 2011, but the work was delayed due to approval of revised AA, which was awaited from Government.
04.	Lachhanpur Diversion scheme	2100	November 2007	October 2010	35	26.74	Pending with DFO and no clearance received.
05.	Sildaha Diversion scheme	800	August 2010	December 2011	16	11.33	Headwork completed but the water resources could not be utilised due to non execution of canal work.
Total		3891				46.07	

Appendix-2.1.9

(Referred to in paragraph 2.1.9.2 (c), Page 19)

Unfruitful expenditure on unviable projects

Sl. No.	Name of scheme	Date of approval	Approved cost (₹ in crore)	Design potential (in ha)	Expenditure (₹ in crore)	Current status
01.	Dulna diversion scheme	June 2008/ September 2009	136.66	10,000	61.45	No land available for canal work
02.	Hatkul diversion scheme	February 2010	3.52	202	1.70	No land available for canal work
03.	Makri diversion scheme	October 2005	2.94	578	2.02	
04.	Telgara diversion scheme	February 2010	4.16	404	2.26	
Total (A)			147.28	11,184	67.43	
05.	Kurludih tank scheme	December 2011	1.48	111	1.71	No command available for irrigation
06.	Saken Nalla diversion scheme	March 2010	8.31	910	5.16	Headwork and canal on initial reach not yet started.
Total (B)			9.79	1021	6.87	
Total (A+B)			157.07	12,205	74.30	

Appendix-2.1.10

(Referred to in paragraph 2.1.9.3 (b), page 20)

Statement showing expenditure incurred in excess of administrative approval

(₹ in lakh)

Sl. No.	Name of the Work	Division	Amount of administrative approval	Expenditure	Permissible limit of expenditure (Col.4 + 10 per cent)	Excess over permissible limit (Col.5-Col.6)	
1.	2.	3.	4.	5.	6.	7.	
1.	Bakori Tank	EE, WRD, Dhamtari	1039.19	1668.36	1143.11	525.25	
2.	Bodra Anicut	EE, TDPP, Jagdalpur	287.82	429.14	319.60	112.54	
3.	Irikpal Anicut		636.22	706.24	699.84	6.40	
4.	Naryalpal Anicut		320.00	498.53	352.00	146.53	
5.	Kerawahi Tanak	EE, WRD, Kondagaon	252.48	312.74	277.72	35.02	
6.	Oshribera Anicut		354.83	406.37	390.31	16.06	
7.	Kabra Stopdam		282.85	315.78	311.13	4.65	
8.	Otenda Anicut		221.93	259.31	241.23	18.08	
9.	Murgaon Diversion		124.48	237.05	136.92	100.08	
10.	Beljora Tank	EE, WRD, Ambikapur	581.32	886.67	639.45	247.22	
11.	Kotchhal Tank		121.50	194.10	133.65	60.45	
12.	Losanga Tank		198.99	223.25	218.89	4.36	
13.	Bhatko Channel		5.78	13.34	6.30	7.01	
14.	Maharanipur diversion scheme		169.28	202.33	186.21	16.12	
15.	Kot diversion scheme		180.77	224.68	198.85	25.83	
16.	Lagu diversion scheme		367.12	445.58	403.83	41.75	
17.	Machhli tank		362.71	435.07	398.98	36.09	
18.	Sapda diversion scheme		144.95	162.72	159.44	3.28	
19.	Khajuri diversion scheme		54.87	61.30	60.36	0.94	
20.	Riri diversion scheme		136.01	223.25	149.61	73.64	
21.	Gaghjharia diversion scheme		67.77	77.24	74.55	2.69	
22.	Samanpur Tank		EE, WRD, Kawardha	250.45	578.03	275.50	302.53
23.	Upper Agar diversion			512.24	630.85	563.48	67.37
24.	Mohpar tank	485.85		642.93	534.44	108.50	
25.	Devsara tank	480.37		551.50	528.40	23.10	
26.	Chatri tank	145.43		191.94	159.97	31.97	
27.	Ghogra Diversion	604.62		783.79	665.08	118.71	
Total						2136.17	

Appendix-2.1.11
(Reference to in paragraph 2.1.9.3 (b), Page 20)
Statement showing cases of revised estimates pending for sanction

(₹ in Lakh)

Sl. No.	Name of work	Amount of administrative approval (AA)	Month & year of AA	Amount of revised AA under submission	Status of pending	Reasons for pending
Chief Engineer – Minimata (Hasdeo) Bango Project, Bilaspur						
1	Saradih Barrage	37284.57	Nov.-2009	52752.06	E-in-C	Under compliance
2	Sheorinarayan Barrage	11644.64	Oct.-2009	24391.00	E-in-C	Under compliance
Chief Engineer – Mahanadi Godavari Basin, Raipur						
3.	Remodeling & lining of Bhilai Distributory	261.12	29.08.2008	403.62	State Government	--
4.	Amadula Tank	205.32	03.12.2007	337.35	E-in-C	--
5.	Chakraway-Tuma Anicut	952.98	21.02.2011	1120.11	E-in-C	--
6.	Mohapar Tank	485.84	10.03.2005	1045.69	State Government	--
7.	Ghoghra Diversion scheme	604.62	01.04.2005	1301.62	State Government	--
8.	Putputa Diversion scheme	271.64	12.06.2007	501.30	State Government	--
9.	Devsara Tank	480.37	23.01.2006	619.87	State Government	--
10.	Upparagar Diversion scheme	512.24	28.04.2005	747.95	State Government	--
11.	Chatari Tank	143.45	28.10.2007	238.27	State Government	--
12.	Samnapura Tank	250.45	02.02.2005	607.01	State Government	--
13.	Mundhori Tank	179.15	27.01.2006	327.88	EE	--
14.	Pinkapar Diversion scheme	326.39	18.01.2008	633.61	State Government	--
15.	Madiyan Tank	423.61	05.02.2008	133.79	State Government	--
16.	Tipangarh	555.45	25.09.2006	1330.72	State Government	--
17.	Pawantara Anicut	159.30	12.12.2007	211.33	E-in-C	--
18.	Amgaon Tank	179.04	03.12.2007	250.00	EE	--
19.	Koilari Diversion scheme	543.29	28.11.2007	1472.43	State Government	--
20.	Mohatra Tank	8.00	15.02.1977	378.17	E-in-C	Forest affected
21.	Amarkot Diversion scheme	151.72	22.10.2007	359.65	E-in-C	--
22.	Koma Tank	24.75	14.06.1980	184.05	E-in-C	Forest affected
23.	Bagnai Diversion scheme	17.48	28.01.1977	528.74	CE	Forest affected
24.	Vandurga Tank	16.24	17.05.1980	882.72	E-in-C	Forest affected
25.	Dhabakhar Tank	79.75	25.10.2004	758.53	E-in-C	Forest affected
26.	Jhakhmudha Tank	132.29	11.12.2002	883.16	E-in-C	Forest affected
Chief Engineer – Hasdeo Basin, Bilaspur						
27.	Surartikara Anicut	430.94	31.10.2009	--	EE	Not submitted by EE
28.	Sonpuri Nagoi Anicut	471.99	31.10.2009	602.05	State Government	--
29.	Chhatan Anicut	314.63	24.09.2013	334.78	EE	Not submitted by EE
30.	Koliha Anicut	191.68	03.10.2013	245.91	EE	Not submitted by EE
31.	Kasaipali Anicut	223.47	16.09.2009	-	EE	Not submitted by EE
32.	Kholamalla Stopdam No.-1	247.32	16.09.2009	-	EE	Not submitted by EE
33.	Kholamalla Stopdam No.-2	310.29	16.09.2009	499.98	E-in-C	---
34.	Basantpur Barrage	20901.72	16.09.209	26352.65	E-in-C	Observation of E-in-C pending for clarification by EE
35.	Mironi Barrage	31944.67	01.12.2009	38336.91	E-in-C	Observation of E-in-C pending for clarification by EE
36.	Patharra Anicut	356.58	29.08.2012	-	EE	Not submitted by EE
37.	Bitkuli tarbund Tank	161.14	11.10.2012	-	EE	Not submitted by EE
38.	Badikar Tank	79.17	12.05.2005	298.46	State Government	--
39.	Katsira Tank	207	23.09.2008	435.00	EE	Not submitted by EE
40.	Manikpur Tank	135.12	06.12.2014	427.58	State Government	--
41.	Sukhri Tank	24.8	28.11.1977	1507.25	E-in-C	Observation pending for clarification.
42.	Ramur Tank	1800.82	28.04.2005	7915.55	E-in-C	Observation pending for clarification.
43.	Simkeda Tank	708.01	28.09.2004	509.80	State Government	Firstly received to clearance of forest land
44.	Chitakhhol Tank	165.28	23.03.2006	404.06	EE	Observation pending for clarification.
45.	Utrada Tank	441.53	07.01.2010	-	EE	Not Submitted by EE.
46.	Banriya Tank	56.49	04.07.2007	96.30	EE	Observation pending for clarification.
47.	Telipali Tank	92.79	31.3.2006	212.21	State Government	--
48.	Kouwatal Tank	85.51	31.03.2008	-	EE	Not submitted by EE
49.	Lohrapani Tank	201.92	26.12.2006	620.85	E-in-C	Observation pending for clarification.
50.	Potebirmi Tank	79.87	13.03.2007	-	EE	Not submitted by EE
51.	Pelamnalla Tank	130.44	03.10.81	498.44	State Government	-
52.	Barpali Diversion scheme	221.67	06.10.2007	-	EE	Not submitted by EE

Sl. No.	Name of work	Amount of AA (in Lakh)	Month & year of AA	Amount of revised AA under submission	Status of pending	Reasons for pending
53.	Bamital canal	271.86	27.05.2006	392.48	State Government	Submitted to C. G. Govt.
54.	Lilar Diversion scheme	304.91	26.06.2003	720.64	EE	Observation pending for clarification.
55.	Nahamar Tank	665.73	03.11.2011	975.30	E-in C	--
56.	Paraghat Tank	2773.97	22.6.11	3775.06	E-in C	--
57.	Chandongri Tank	214.7	5.5.2003	575.04	E-in C	--
58.	Son Kachhar Tank	1085.88	28.3.2006	2823.09	State Government	--
59.	Jharan Tank	276.42	13.1.2006	539.99	EE	Observation pending for clarification.
60.	Kupapani Tank	187.62	28.11.2007	575.31	EE	Observation pending for clarification.
61.	Darripara Tank	94.51	1.3.2005	116.51	EE	Observation pending for clarification.
Chief Engineer - Mahanadi Project, Raipur						
62.	Sondur Reservoir Project	3445.00	November 1982	66827.00	EE	--
63.	Raor anicut	5122.32	March 2010	5122.32	E-in-C	Under compliance
64.	Tarpongi anicut	309.18	May 2006	780.48	State Government	Under compliance
65.	Hardi anicut	3920.68	June 2012	6038.93	State Government	Under compliance
66.	Mahadevghat anicut	1175.44	August 2012	1277.000	State Government	Under compliance
67.	Murgaon diversion	124.53	February 2006	346.00	SE	For compliance
68.	Pharaspal tank	196.84	September 2005	542.42	SE	For compliance
69.	Malenger diversion	1118.95	November 2005	2935.86	State Government	For compliance
70.	Dudhawa right bank canal	457.25	August 2002	2685.89	SE	For compliance
71.	Rajpur diversion	170.11	February 2008	635.90	E-in-C	Under compliance
72.	Nahakasa tank	336.61	July 2008	1202.65	SE	For compliance
73.	Dabena tank	24.88	December 1981	327.36	State Government	--
74.	Bodra anicut	287.82	July 2007	431.28	State Government	Under compliance
75.	Narayanpal anicut	320.00	September 2007	517.39	State Government	Under compliance
76.	Irikpal anicut	636.22	September 2009	--	EE	Under preparation
77.	Kerawahi tank	252.48	January 2006	--	EE	--
78.	Usirbeda stop dam	354.83	August 2010	--	EE	Under preparation
79.	Kanwara stop dam	282.85	July 2011	--	EE	Under preparation
80.	Otenda anicut	221.93	November 2011	--	EE	Under preparation
	Total			271862.30		

Appendix-2.1.12

(Referred to in paragraph 2.1.9.4 (A) (i), page 21)

Statement showing details of hard rock not accounted by the division

Sl. No.	Name of division	Agreement No.	Quantity of hard rock (in cum)	Issue rate (in ₹)	Amount (₹ in lakh)
1	EE, WRD, Kondagaon	17/DI, 2009-10	773.48	Not prepared	--
2		21/DI, 2009-10	570.86	Not prepared	--
3		16/DI, 2009-10	3815.00	Not prepared	--
4	EE, WRD, Tandula, Durg	7/DI, 2012-13	93.6	Not prepared	--
5		5/DI, 2012-13	32.4	Not prepared	--
6		10/DI, 2012-13	23.76	Not prepared	--
7		12/DI, 2012-13	284.12	Not prepared	--
8		44/DI, 2011-12	86.29	Not prepared	--
9		41/DI, 2011-12	383.21	Not prepared	--
10		9/DI, 2012-13	25.2	Not prepared	--
11		40/DI, 2011-12	185.64	Not prepared	--
12		4/DI, 2010-11	161.7	Not prepared	--
13		11/DI, 08-02-13	2002.65	Not prepared	--
14		2/DI, 2011-12	272.09	Not prepared	--
15	12/DI, 2009-10	220.84	Not prepared	--	
16	EE, Kelo Project Survey Dn, Raigarh	7/DI, 2007-08	90111.172	40.00	36.04
17	EE, WRD, Janjgir-Champa	5/DI, 2010-11	32211.09	172.50	55.56
	Total		131253.10		91.6

Appendix-2.1.13

(Referred to in paragraph 2.1.9.4 (A) (ii), page 22)

Status of works finalised under debitible clause in test checked division

(₹ in lakh)

Sl. No	Name of Division	Agreement No.	Name of the Contractor	PAC Amount	Contract Amount	Accepted Rate	Amount paid	Calculation of Recoverable Amount
1.	WRD, Kanker Division	15 DL/ 2004-05	M/s Keertan Lal Baret	60.71	51.45	18.12% below	22.36	12.09**
		1 DL/ 2007-08	Sh. M. C. Pulla Reddy	37.25	40.95	9.93% above	39.58	
2.	WRD, Barrage Div Dongargaon	7 DL/ 05-06	M/s Amar Builders	1424.53	1367.52	4.20% Below	1423.23	126.08% of 223.03 = 281.19
		9 DL/ 13-14	Arya Const.	223.03	494.86	121.88% above	Nil	
		4 DL/ 07-08	Vijay Mishra	571.24	542.1	5.10% Below	609.49	100.10% of 3.024 = 3.02
		3 DL/ 12-13	Kushalia Const.	3.024	5.9	95% Above	Nil	
		7 DL/ 07-08	Vijay Mishra	478.38	410.54	14.18% Below	356.33	109.18% of 5.09 = 5.56
		4 DL/ 13-14	Kushalia Const.	5.09	9.92	95% Above	Nil	
		13 DL/ 05-06	Vijay Mishra	129.62	118.06	8.92% Below	124.28	107.66% of 4.98 = 5.36
		7 DL/ 12-13	Ramchandra Sharma	4.98	9.89	98.74% Above	9.49	
		2 DL/ 2005-06	M/s Amar Builders	969.88	854.36	11.91% below	1037.09	55.97% of 516.33 = 288.99
2 DL/ 2010-11	Sh. Sanjay Agrawal	516.33	743.86	44.06% above	866.82			
3.	WRD, Raipur	37 DL/05-06	M/s Rao Const.	821.19	870.3	5.98% Above	9.78	60.02% of 815.34 = 489.36
		8 DL/ 08-09	Radheshyam Agrawal	815.34	1353.46	66% Above	1633.48	
		5 DL/09-10	Durga Cosnt.	42.09	35.23	16.30% Below	9.91	25.21% of 25.53 = 6.43
		1 DL/ 13-14	A to Z Const.	25.53	27.8	8.91% Above	Nil	
4.	WRD, Rajnandagaon	1 DL/ 2005-06	M/s B. P. Dwivedi	31.75	34.17	7.71 % above	34.17	70.12**
		02 DL/2008-09	M/s K. D. Sharma	62.22	76.12	22.17% above	76.12	
5.	WRD, Jashpur	1 DL/ 07-08	M/s B.L.S & Associates	95.64	76.39	20.12% below	10.89	45.19 % of 80.75 = 36.49
		4 DL/ 2009-10	Sh. Nitya Nand Singh	80.75	101	25.07% above	89.02	
Total								1204.61

**Note: Department's figure for recovery under debitible clause from defaulter contractor.

Appendix-2.1.14

(Referred to in paragraph 2.1.9.5 (a), Page 25)

Status of irrigation revenue collection in 24 test checked divisions

(₹ in lakh)

Sl. No.	Name of the Division	Opening Balance (2009-10)	Demand (2009-14)	Total Outstanding	Achievement (2009-14)	Percentage Collection	Closing Balance (March 2014)
01.	WRD, Bemetra Division	273.26	173.10	446.36	62.81	14.07	383.55
02.	WRD, Kanker Division	83.80	226.91	310.71	103.01	33.15	207.70
03.	WRD, Div.-2 Rudri, Dhamtari	561.13	1065.39	1626.52	738.26	45.39	888.26
04.	WRD, Kharang Division, Bilaspur	535.37	466.79	1002.16	203.08	20.26	799.08
05.	WRD, WM Dn-1, Raipur	434.71	949.03	1383.74	826.49	59.73	557.25
06.	WRD, Tandula Division, Durg						
	(i) Farmer & PHE, BMC, Nistari	2532.26	1517.19	4049.45	487.63	12.04	3561.82
	(ii) B.S. P	58.83	15712.54	15771.37	19722.50	More than 100	--
	(iii) Ground Water	--	2.00	2.00	44.34	More than 100	--
07.	WRD, Kondagaon	18.10	12.47	30.57	6.22	20.35	24.35
08.	WRD, MRP-Ph-2, Raipur	10.96	29.00	39.96	23.09	57.78	16.87
09.	Kelo Project Survey Div, Raigarh	--	--	--	--	--	--
10.	Kelo Project Construction Div, Lakha, Kharsia	--	--	--	--	--	--
11.	WRD Survey, Research & Construction Barrage Div. Kharsiya	--	--	--	--	--	--
12.	Hasdeo RBC WM Barrage Div Rampur (Korba)*	820.19	191812.16	192632.35	104418.02	54.21	48659.58
13.	WRD, Rajnandgaon	391.54	368.76	760.30	132.38	17.41	627.92
14.	WRD, Barrage Div Dongargaon	7.11	32.14	39.25	19.11	48.69	20.14
15.	WRD, Kawardha	293.96	201.08	495.04	88.94	17.97	406.10
16.	WRD, Raipur	1042.91	4967.31	6010.22	4568.52	76.01	1441.70
17.	WRD Dhamtari	119.18	161.50	280.68	61.80	22.02	218.86
18.	WRD Maniyari Dn. Mungeli	298.32	582.54	880.86	120.91	13.73	759.95
19.	WRD, Champa						
	(i) Farmer	25.84	17.14	42.98	11.01	25.62	31.97
	(ii) Industrial	31.20	1850.69	1881.89	1314.72	69.86	548.91
20.	WRD TDPP Jagdalpur	22.70	17.22	39.92	6.33	15.86	32.46
21.	WRD, Raigarh						
	Farmers	329.61	242.52	572.14	92.96	16.25	484.14
	Industries	284.27	8267.96	8552.23	10592.55	More than 100	3271.15
22.	WRD Baikunthpur	92.69	442.31	535.00	503.55	94.12	31.45
23.	WRD Dn. No.2 Ramanujganj	15.37	25.70	41.07	18.15	44.19	22.92
24.	WRD Dn. No.-1 Ambikapur	11.54	57.08	68.62	50.12	73.04	18.50
Total					144216.49		63014.63

Note : * : The water charges realised by the division of ₹1439.73 crore included an amount of ₹395.55 crore, which was adjusted as per decision at Government level.

Appendix-2.1.15

(Referred to in paragraph 2.1.9.5 (b), page 25)

Details of industries from whom water charges not realised

Sl. No.	Name of industries	Outstanding amount (₹in crore)	Name of divisions	Reasons	Period
01.	M/s Ind Bharat Limited	24.68	EE, WRD Survey, Research and Construction Division, Kharsia	The companies failed to pay the second installment of advance water tax even after extended stipulated date.	2011-12 to 2013-14
02.	M/s Visa Power Limited	43.61			
03.	M/s BEC Power Limited	17.88			
04.	M/s SKS Power Limited	4.73			
05.	M/s RKM Zone Power Limited	55.33			
06.	M/s DB Power Limited	0.10			
07.	M/s NTPC Lara (I) & (II)	2.23			
08.	M/s Bardha Power Company Pvt. Ltd.	56.37	EE, WRD, Champa		2009-10 to 2013-14
09.	M/s Sona Power Ltd.	11.66			
10.	M/s Jindal India Ltd.	20.99			
11.	M/s Bhusan Steel and Energy Ltd.	97.47			
12.	M/s Torent Power Ltd.	7.01			
13.	M/s Ispat Industries Ltd.	33.49			
14.	M/s Moser Beer Power Infrastructure Ltd.	36.29			
15.	M/s Shyam Imco Infrastructure Ltd.	22.18			
16.	M/s Athena CG Power Ltd.	34.05			
17.	M/s Jain Energy Ltd.	32.26			
18.	M/s Essar Power Ltd.	64.02			
19.	M/s CG State Power Generation Company	6.03			
20.	M/s Prakash Industries Ltd.	2.75			
21.	M/s Shanti G. D. Power Ltd.	2.79			
22.	M/s Chhattisgarh Steel and Power Ltd.	9.48			
23.	M/s Madhya Bharat Paper Mill Ltd.	3.16			
Total (A)		588.56			
24.	M/s KSK Mahanadi Power Company (Pvt.) Limited	5.95	EE, WRD, Champa	Water being used by the company without executing agreement.	2013-14
25.	M/s Nova Iron and Steel,	41.91	EE, Kharang Division, Bilaspur		1994-95 to 2013-14
Total (B)		47.86			
26.	M/s Anjali Steel Limited	2.57	EE, Kelo Project (Survey) Division, Raigarh	The company failed to pay the water charges at revised rates.	2011-2012 to 2013-14
Total (A+B)		638.99			

Appendix-2.1.16
(Referred to in paragraph 2.1.10, page 26)
Statement showing men in position

Sl. No.	Designation	Sanctioned strength	Men-in-position	Vacancy	Excess
Class-I					
01.	Engineer-in-Chief	01	01	--	--
02.	Chief Engineer	06	04	02	--
03.	Conservator of Forest	01	--	01	--
04.	Dy. Director (Finance)	01	01	--	--
05.	Superintending Engineer (Civil)	20	21	--	01
06.	Superintending Engineer (E/M)	02	--	02	--
07.	Executive Engineer (Civil)	80	87	--	07
08.	Executive Engineer (E/M)	09	08	01	--
09.	Research Officer	05	02	03	--
10.	Engineer Administrative Officer	05	05	--	--
11.	Senior Geologist	03	03	--	--
12.	Senior Geophysicist	01	01	--	--
13.	Senior Geochemist	01	--	01	--
Total (A)		135	133	10	08
Class-II					
14.	Assistant Engineer (Civil)	404	434	--	30
15.	Assistant Engineer (E/M)	53	25	28	--
16.	Accounts Officer	07	02	05	--
17.	Programmer	01	--	01	--
18.	Statistical Officer	01	--	01	--
19.	<i>Nahar Pratisamaharta</i>	04	--	04	--
20.	Assistant Research Officer	16	19	--	03
21.	Land Acquisition Officer	07	01	06	--
22.	Assistant Geologist	10	06	04	--
23.	Assistant Geophysicist	03	02	01	--
24.	Assistant Geochemist	01	--	01	--
25.	Assistant Chemist	02	--	02	--
Total (B)		509	489	53	33
Class-III					
26.	Sub Engineer (Civil)	1303	1297	6	--
27.	Sub Engineer (E/M)	173	132	41	--
28.	Chief Drafts Man	05	--	05	--
29.	Drafts Man (Civil)	79	126	--	47
30.	Drafts Man (E/M)	10	07	03	--
31.	Assistant Drafts Man (Civil)	88	125	--	37
32.	Assistant Drafts Man (E/M)	11	06	05	--
33.	Tracer (Civil)	134	56	78	--
34.	Tracer (E/M)	10	02	08	--
35.	Senior Superintendent	08	07	01	--
36.	Superintendent (Circle)	16	11	05	--
37.	Personnel Assistant Grade-I	08	08	--	--
38.	Personnel Assistant Grade-II	10	19	--	09
39.	Stenographer Grade-III	17	29	--	12
40.	Assistant Grade-I	63	39	24	--
41.	Assistant Grade-II	548	505	43	--
42.	Assistant Grade-III	827	1258	--	431
43.	Data Entry Operator	364	33	331	--
44.	Steno Typist	85	34	51	--
45.	Dam Inspector	16	09	07	--
46.	Research Assistant	25	05	20	--
47.	Lab Technician	25	08	17	--
48.	Lab Assistant	10	04	06	--
49.	Assistant Programmer	04	--	04	--
50.	Wireless operator	02	02	--	--
51.	Assistant Geologist	19	02	17	--

Sl. No.	Designation	Sanctioned strength	Men-in-position	Vacancy	Excess
52.	Assistant Geophysicist	07	--	07	--
53.	Assistant Geochemist	04	--	04	--
54.	Divisional Accountant	59	21	38	--
55.	Amin	735	420	315	--
56.	Driver	23	16	07	--
Total (C)		4688	4181	1043	536
Class-IV					
57.	Daftari	75	31	44	--
58.	Peon	619	659	--	40
59.	Jamadar	01	--	01	--
60.	Choukidar	18	06	12	--
61.	Chainman	12	06	06	--
62.	Lab operator	08	--	08	--
63.	Farash/Sweeper	15	04	11	--
64.	Lab keeper	01	08	--	07
65.	Process Server	22	10	12	--
Total (D)		771	724	94	47
Grand Total (A+B+C+D)		6103	5527	1200	624

Appendix-2.1.17

(Referred to in paragraph 2.1.11.2, Page 27)

Statement showing details of funds released to Water Users Association

(₹ in lakh)

Sl. No.	Name of division	Year					Total	Status of Account Submission
		2009-10	2010-11	2011-12	2012-13	2013-14		
1.	Tandula WRD Divison Durg	25.58	26.25	28.88	31.47	29.87	142.05	Not Submitted
2.	WRD,Bemetara Division	9.50	11.50	11.44	12.00	10.99	55.43	Not Submitted
3.	WRD, Kanker Division	18.47	18.89	25.94	20.39	20.68	104.37	Submitted
4.	WRD, Dn.-2, Rudri	21.65	21.65	21.65	21.65	21.65	108.25	Submitted
5.	WRD, MRP-II, Raipur	1.00	0.85	1.43	2.00	1.00	6.28	Submitted
6.	WRD, Water Management Div. -1 Raipur	13.67	13.66	6.96	17.49	11.99	63.86	Not Submitted
7.	WRD, Kharang, Bilaspur	22.13	17.30	0.67	29.76	5.2	75.06	Submitted
8.	WRD, Kondagaon	1.97	2.40	0	4.96	9.23	18.56	Not submitted
9.	Kelo project survey div Raigarh	--	--	--	--	--	--	--
10.	Kelo Project Construction. Lakha Divison Kharsia	--	--	--	--	--	--	--
11.	WRD,Survey research&const Divn. Kharsia	--	--	--	--	--	--	--
12.	Hasdeo, RBC,Rampur Korba	1.87	2.00	0.396	Nil	Nil	4.26	Not submitted
13.	WRD, Rajnandgaon	15.44	16.54	15.98	17.15	15.20	80.31	Not submitted
14.	WRD, Kawardha	9.34	9.04	9.41	10.16	11.24	49.19	Not submitted
15.	WRD, Barrage division, Dongorgaon	--	--	--	--	--	--	--
16.	WRD, Raipur	15.27	20.11	10.08	7.52	9.94	63.00	Submitted
17.	E.E. WRD Dhamtari	5.16	5.16	5.16	5.43	2.58	23.49	Not submitted
18.	E.E. Maniyari WRD Mungeli	30.3	30.03	27.35	27.98	22.93	138.59	Not submitted
19.	E.E. WRD Janjgir Champa	0.8	0.7	1.4	1.35	Nil	4.25	Not submitted
20.	E.E. TDPP WRD Jagdalpur	4.21	3.1	3.1	3.1	4.68	18.19	Not submitted
21.	E.E. WRD Raigarh	3.61	9.52	10.43	15.4	15.72	54.68	Not submitted
22.	E.E. WRD Baikunthpur	8.26	8.26	5.573	5.9	8.52	36.51	Not submitted
23.	E.E. WRD Ramanujganj	6.59	1.7	4.355	4.95	4.6	22.19	Not submitted
24.	E.E. WRD Ambikapur	0.55	1.35	6.27	10.55	11.64	30.36	No submitted
Total		215.37	220.01	196.47	249.21	217.66	1098.88	

Appendix-2.2.1

(Referred to in paragraph 2.2.6, page 31)

Statement showing details of total projects and projects selected for audit and physical verification

(a) Grid interactive			
Type of Programme	Total Projects	Sample Selected	Physical verification
JNNSM/RPSSGP	4	2	1
Demonstration Programme	1	1	1
SHP	2	1	1
Bio Mass cogen (Non Bagasse)	1	1	1
(b) Off –Grid and Decentralised			
Solar Home lighting Systems	7254	72	2
Solar Street lighting	2042	20	8
Solar Water Pump	240	02	2
Solar Water Heating Systems	2477	24	-
RVE	682	81	07
Bio-Gas	17262	170	19

Appendix -2.2.2

(Referred to in paragraph 2.2.8.1(b), page 34)

Statement showing details of SWHS sanctioned and installed

SWHS to be installed					SWHS actual installed			
Types of systems	Types of collectors	Number of system	collector area (sq. m)	CFA sanctioned (₹ in crore)	Number of system	collector area (sq.m)	No. of system Non/ Excess installation as per sanction	Non/Excess installation collector area (sq.m)
1	2	3	4	5	6	7	8(3-6)	9(4-7)
Domestic SWH Systems	FPC	2000	4000	132.00	163	956	1837	3044
	ETC	2000	3000	90.00	765	2347	1235	653
Ind./Inst./ Comm.	FPC	0	0	0.00	41	646	-41	-646
	ETC	0	0	0.00	94	1060	-94	-1060
	Total	4000	7000	222.00		5009	4000	1991

Note: As per Statement of Expenditure, the cost of 1706 sqm (646 plus 1060) collector area of SWHS is ₹52.58 lakh.

Appendix -2.2.3

(Referred to in paragraph 2.2.8.1(f), Page 37)

Statement showing details of work orders issued to the firms

(₹ in lakh)

Name of firm	Work order No/ date	Stipulated supply date	Order value
M/s Avni Energy Solutions Pvt Ltd, Bangalore	11584/11.12.2013	15.1.2014	111.71
	11586/11.12.2013	15.1.2014	168.75
	6103/31.08.2013	30.09.2013	225.00
	13001-03/09.01.2014	10.02.2014	377.92
	13005-07/09.01.2014	10.02.2014	154.22
	14894-95/11.02.2014	11.02.2014	377.12
	14901-05/11.02.2014	11.02.2014	235.55
M/s Nano Bright Technologies pvt Ltd, Hyderabad	14909-14913/11.2.2014	15.3.2014	119.67
	15572/21.2.2014	15.3.2014	245.26
	5556 A-E/20.8.2013	30.9.2013	956.39
	3882-3888/27.6.2013	30.7.2013	183.76
	3900-3906/27.6.2013	30.7.2013	229.49

(Source: Information collected and compiled by Audit)

Appendix -2.2.4

(Referred to in paragraph 2.2.8.1(f), Page 37)

Statement showing details of lamps supplied and security deposit deducted from the firms

(₹ in crore)

Name of firm	Task lights supplied	Study lamps supplied	Total Amount paid	SD deducted	Amount deductible	Short deduction of SD
(A)	(B)	(C)	(D)	(E)	(F=D*15%)	(G=F-E)
M/s Avni Energy Solutions Pvt. Ltd, Bangalore	176800	105907	16.50	0.94	2.47	1.53
M/s Nano Bright Solar Technologies Pvt. Ltd, Hyderabad	165887	96451	15.39	1.68	2.31	0.63
TOTAL	342687	202358	31.89	2.62	4.78	2.16

(Source: Information furnished by CREDA and compiled by Audit)

Appendix-2.3.1

(Referred to in paragraph 2.3.5, page 49)

Statement showing audit methodology and sampling under Tribal Sub-Plan review

Sl	District	Blocks	Selected Schools	Selected CHCs	Selected PHCs
1.	Balrampur	Ramanujganj and Wadrafnagar	PS- Pashchimtola , Tambeshwar Nagar , Koyampara (Muhali) and Uperbandh, UPS- Kewdaashila (Krishnanagar), Nawapara, Sulsuli and Koyampara, MCSG- Nawapara , KGBV- Ramanujganj, HS(RMSA)- Ramanujganj and Wadrafnagar	Ramanujganj	Jamwantpur, Ramchandrapur
				Wadrafnagar	Badkagaon, Murkoul
2.	Bastar	Bastar and Jagdalpur	PS- Khorkhosa No. 2, Pujaripara, Badepara (Kurandi) and Podaguda, UPS- Bhursundi, Khorkhosa, Dharampura and Podaguda, MCSG- Karakapal, KGBV- Jagdalpur, HS(RMSA)-Bastar and Jagdalpur	-	Bastar, Bhanpuri
				Nangoor	Adawal, Kurandi
3.	Bilaspur	Gaurella, Kota and Marwahi	PS- Bahrijhorki, Goratikara (Newasa), Awas Mohalla (Changori), Karagikhurd, Garlaiyaatola and Pandaripani UPS- Anjani, Bahrijhorki (Chuktipani), Changori, Karagikhurd, Matiyadand and Ptharra. MCSG- Khaira (Kota), KGBV- Chapora (Kota), HS(RMSA)- Gaurella, Kota and Marwahi	Kota	Belgahana, Kargikala
				Marwahi	Dhobar, Seoni
				Gorella	Basti, Keonchi
4.	Jashpur	Bagicha and Pathalgaon	PS- Bagdol (Girls), Turrikona, Bhathudand amd Jangalpara UPS- Peta, Kadamtoli (Ghughari), Bhathudand and Palidih MCSG- Shaila (Manora), KGBV- Mudapara, HS(RMSA)-Bagicha and Pathalgaon	Bagicha	Kalia, Sanna
				Pathalgaon	Bagbahar, Kotba
5.	Kondagaon	Kondagaon and Makdi	PS- Bajarpara, Rautpara, Chikhalapara and Dongaripara UPS- Bazarpara, Rautpara, Chikhalapara and Hadigaon MCSG- Bazarpara (Kondagaon), KGBV- Kondagaon, HS(RMSA)-Kondagaon and Makdi	-	Chipawand, Dahikonga
				Makdi	Anatpur, Shampur
6.	Raigarh	Dharamjaigarh and Lailunga	PS- Purani Basti (Durgapur), Uraonpara (Shahpur), Bastipara and Khamhar UPS- Bansjor, Darridih, Jharan and Khamhar MCSG- Lailunga, KGBV- Jhagarpar, HS(RMSA)- Dharamjaigarh and Lailunga	Vijaynagar	Kumarta, Sisiringa
				Lailunga	Mukdega, Rajpur
7.	Surajpur	Pratappur and Surajpur	PS- Chhuhipara (Jarahi), Navapara (Songara), Harijanpara and Lanchi (Sattipara) UPS- Dawankara, Vanshipur, Lanchi (Dabaripara) and Manpur MCSG- Pratappur, KGBV- Pratappur, HS(RMSA)- Pratappur and Surajpur	Pratappur	Songara, Rewti
				-	Kandarai, Latori
				Bishrampur	-
8.	Surguja	Ambikapur and Lundra	PS- Majhapara (Khaliba), Matuapara (Bhagwanpur), Bhedidand and Ranghaghpra, UPS- Funderdihari, Digma, Mahatopara (Girls) and Gadhbira MCSG- Ambikapur, KGBV- Ambikapur, HS(RMSA)- Ambikapur and Lundra	Bafoli	Barkela, Nawanagar
				Dhorpur	Bargidih, Raghunathpur

PS-Primary School, UPS-Upper Primary School, HS-High School, MCSG-Model Cluster School for Girls, KGBV-Kasturba Gandhi Balika Vidyalay

Appendix-2.3.2

(Referred to in paragraph 2.3.6.2, page 50)

Details of funds released and expenditure under RMSA, SSA and MDM

(₹ in crore)

Name of the scheme	Year	Actual release by GoI	Actual release by State	Opening Balance plus Interest	Total available amount	Expenditure (per cent)	Amount not utilised	Amount provided under TSP (w.r.t release of GoI and State share during the year)
SSA	2011-12	739.40	584.31	292.59	1616.30	1374.77 (85)	241.53	289.13 (22)
	2012-13	959.45	658.40	30.31	1648.16	1670.91 (88)	-22.75	416.67 (26)
	2013-14	766.99	585.82	16.00	1368.81	1402.62 (88)	-33.81	297.12 (22)
	Total	2465.84	1828.53	338.90	4633.27	4448.30 (96)	184.97(4)	1002.92 (23)
RMSA	2011-12	346.18	118.39	81.78	546.35	33.82 (6)	512.53	Nil
	2012-13	308.97	80.33	8.51	397.81	243.16 (27)	154.65	Nil
	2013-14	186.93	87.16	9.81	283.90	703.02 (74)	-419.12	85.49 (31)
	Total	842.08	285.88	100.10	1228.06	980.00 (80)	248.06(20)	85.49 (8)
MDM	2011-12	404.49	134.83	Nil	539.32	501.09 (93)	38.23	197.48 (37)
	2012-13	391.75	138.58	Nil	530.33	487.45 (92)	42.88	182.94 (34)
	2013-14	343.34	172.4	Nil	515.74	457.2 (87)	58.54	174.58 (34)
	Total	1139.58	445.81	Nil	1585.39	1445.74 (91)	139.65(9)	555.00 (35)

Appendix-2.3.3

(Referred to in paragraph 2.3.6.2, page 50)

Details of funds allocation, release and expenditure under NRHM schemes

(₹ in crore)

YEAR	Program	Total GoI releases	TSP funds (GoI share)	State Share	Opening Balance plus Interest	Total Fund available	Expenditure	Closing Balance
2011-12	IMS	105.17	30.90	0	0	105.17	116.25	-11.08
2012-13		129.43	66.61	0	0	129.43	116.93	12.5
2013-14		85.30	44.26	0	0	85.3	144.57	-59.27
Total IMS		319.90	141.77	0	0	319.9	377.75	-57.85
2011-12	Immuni- zation	10.30	0	0	2.92	13.22	8.66	4.56
2012-13		4.92	0	11.26	0	16.18	13.47	2.71
2013-14		8.45	0	12.19	0.22	20.86	15.10	5.76
Total Immunization		23.67	0	23.45	3.14	50.26	37.24	13.02
2011-12	RCH Flexipool	121.58	25.00	0	58.82	180.40	138.34	42.06
2012-13		87.82	37.31	152.17	0	239.99	165.10	74.89
2013-14		104.67	33.39	66.61	2.53	173.81	175.60	-1.79
Total RCH Flexipool		314.07	95.7	218.78	61.35	594.2	479.04	115.16
2011-12	Mission Flexipool	118.90	0	0	176.03	294.93	156.58	138.35
2012-13		109.10	56.12	120.00	0	229.1	184.47	44.63
2013-14		118.34	37.76	152.71	1.88	272.93	243.43	29.50
Total Mission Flexipool		346.34	93.88	272.71	177.91	796.96	584.47	212.49
Grand Total		1003.98	331.35	514.94	242.40	1761.32	1478.50	282.82

Appendix-2.3.4

(Referred to in paragraph 2.3.6.2, page 50)

Details of funds allocation, release and expenditure under NPCDCS and NPHCE schemes

(₹ in crore)

YEAR	Programme	Total GoI releases	TSP funds (GoI plus State Share)	State Share	Opening Balance plus Interest	Total Fund available (3+8+9)	Expenditure	Closing Balance
1	2	5	6	7	9	10	10	11
2011-12	NPCDCS	4.57	1.45	1.36	1.68	7.61	0.00	7.61
2012-13		0.07	0.00	0.08	0.44	0.59	0.10	0.49
2013-14		0.00	0.00	0.00	0.37	0.37	2.13	-1.76
Total (A)		4.64	1.45	1.44	2.49	8.57	2.23	6.34
2011-12	NPHCE	0.84	0.00	0.66	1.94	3.44	0.00	3.44
2012-13		2.71	0.73	0.68	0.23	3.62	0.04	3.58
2013-14		0.51	0.21	0.13	0.26	0.90	1.22	-0.32
Total(B)		4.06	0.94	1.47	0.62	7.96	1.26	6.70
TOTAL (A+B)		8.70	2.39	2.01	3.11	16.53	3.39	13.04

Appendix 2.3.5

(Referred to in paragraph 2.3.7.3, page 53)

Statement showing percentage of enrolment of ST children in the visited school of selected block

Name of the District	Name of the block	Total population (as per census 2011)	ST population	ST population (percentage)	No of schools visited	Total enrolled student in last three years	Total enrolled ST student in last three years	Percentage of ST student enrolled to total students
Balrampur	Ramanujanj	168066	84995	51	4	672	83	12
	Wadrafnagar	160974	94927	59	4	990	644	65
Bastar	Bastar	163997	107353	65	4	1443	880	61
	Jagdapur	239808	95511	39	4	923	675	73
Bilaspur	Gaurella	134135	76813	57	4	682	563	83
	Kota	228358	89940	39	4	1544	304	20
	Marwahi	116804	69439	59	4	1051	544	52
Jashpur	Bagicha	171711	121195	70	4	751	587	78
	Pathalgaon	191530	121198	63	4	764	422	55
Kondagaon	Kondagaon	201795	130940	65	4	964	405	42
	Makdi	99714	77499	78	4	579	537	93
Raigarh	Dharamjaigarh	207030	136915	66	4	592	340	57
	Lailunga	130613	82923	63	4	727	295	40
Surajpur	Pratappur	150783	93382	62	4	1027	375	36
	Surajpur	232411	74148	32	4	842	487	58
Surguja	Ambikapur	279717	110407	39	4	650	241	37
	Lundra	119800	81206	68	4	634	354	56

Appendix 2.3.6

(Referred to in paragraph 2.3.7.5, page 55)

Statement showing loss of interest due to operation of current bank account

Month	Minimum amount in bank account during month (RMSA Jagdalpur)	Minimum amount in bank account during month (RMSA Bilaspur)	Total Minimum amount in bank account during month (RMSA Jagdalpur + RMSA Bilaspur)	Interest Rate (in per cent)	Loss of the Interest amount during month
Apr-11	0	1386152	1386152	3.5	4042.94
May-11	0	1471652	1471652	3.5	4292.32
Jun-11	551009	1509447	2060456	4	6868.19
Jul-11	205006	355048	560054	4	1866.85
Aug-11	2425727	853128	3278855	4	10929.52
Sep-11	79957380	66728128	146685508	4	488951.69
Oct-11	79246380	66667036	145913416	4	486378.05
Nov-11	80365603	69107686	149473289	4	498244.30
Dec-11	82930002	71072787	154002789	4	513342.63
Jan-12	51052504	55780382	106832886	4	356109.62
Feb-12	8263134	54879762	63142896	4	210476.32
Mar-12	3701529	53770615	57472144	4	191573.81
Apr-12	32151262	49245850	81397112	4	271323.71
May-12	32867840	45333262	78201102	4	260670.34
Jun-12	44933373	54801847	99735220	4	332450.73
Jul-12	43058347	57948507	101006854	4	336689.51
Aug-12	41515065	53279471	94794536	4	315981.79
Sep-12	39130070	35811282	74941352	4	249804.51
Oct-12	48374262	71927944	120302206	4	401007.35
Nov-12	54595857	103678844	158274701	4	527582.34
Dec-12	52733348	96491656	149225004	4	497416.68
Jan-13	48271977	89384739	137656716	4	458855.72
Feb-13	47228435	79621736	126850171	4	422833.90
Mar-13	62951832	61430520	124382352	4	414607.84
Apr-13	39768508	52565560	92334068	4	307780.23
May-13	29441697	44070030	73511727	4	245039.09
Jun-13	62350582	73537108	135887690	4	452958.97
Jul-13	74011832	155075160	229086992	4	763623.31
Aug-13	63676809	147582184	211258993	4	704196.64
Sep-13	52426470	134728025	187154495	4	623848.32
Oct-13	49439785	124610101	174049886	4	580166.29
Nov-13	52861757	145101061	197962818	4	659876.06
Dec-13	43873914	115908273	159782187	4	532607.29
Jan-14	43078442	104909680	147988122	4	493293.74
Feb-14	41896442	113885957	155782399	4	519274.66
Mar-14	39724274	121126681	160850955	4	536169.85
TOTAL					13681135.10

Appendix-2.3.7

(Referred to in paragraph 2.3.8.2, page 56)

Statement showing details of the achievement of target of Immunization in test checked districts

District	Year	Target	Fully Immunized	Percentage of achievement
Bastar	2011-12	26194	28536	108.94
Jashpur	2011-12	18082	18384	101.67
Raigarh	2011-12	32412	29351	90.56
Surguja	2011-12	57776	25726	44.53
Bilaspur	2011-12	50900	37916	74.49
Total 2011-12		185364	139913	75.48
Balarampur	2012-13	20136	20136	100.00
Bastar	2012-13	17800	13334	74.91
Jashpur	2012-13	18800	18010	95.80
Kondagaon	2012-13	11500	6660	57.91
Raigarh	2012-13	33000	29351	88.94
Surajpur	2012-13	22331	19229	86.11
Surguja	2012-13	22400	21967	98.07
Bilaspur	2012-13	50900	46531	91.42
Total-2012-13		196867	175218	89.00
Balarampur	2013-14	22658	18314	80.83
Bastar	2013-14	18928	14304	75.57
Jashpur	2013-14	20068	15295	76.22
Kondagaon	2013-14	12852	10709	83.33
Raigarh	2013-14	33455	26560	79.39
Surajpur	2013-14	22331	17281	77.39
Surguja	2013-14	23333	24620	105.52
Bilaspur	2013-14	54206	44153	81.45
Total-2013-14		207831	171236	82.39

Appendix-2.3.8

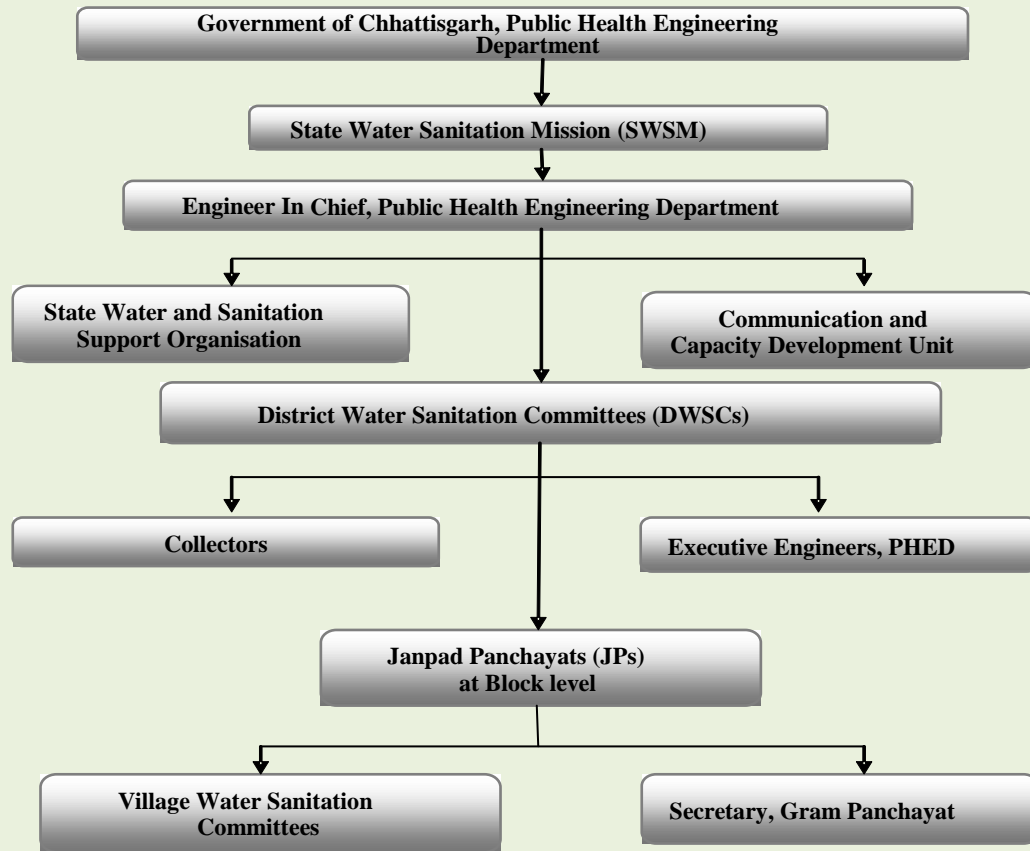
(Referred to in paragraph 2.3.8.3 (2), page)

Statement showing availability of First Referral Units in Blocks

Sl. No	Block	Total ST Population	FRU available (Y)/ not available (N)
1	Pratappur	93382	N
2	Ramanujganj	84995	N
3	Samri(kusmi)	81515	N
4	Lundra	81206	N
5	Lakhanpur	58840	N
6	Mainpat	58322	N
7	Ramanujnagar	56073	N
8	Batouli	54558	N
9	Oudgi	53472	N
10	Shankargarh	52819	N
11	Bhaiyathan	43621	N
12	Premnagar	38976	N
13	Bagicha	121195	N
14	Manora	48740	N
15	Kansabel	47849	N
16	Kunkuri	46765	N
17	Duldula	25023	N
18	Udaipur (Dharamjaigarh)	136915	N
19	Tamnara	47818	N
20	Baramkela	30455	N
21	Pusour	28775	N
22	Marwahi	69439	N
23	Pendra	45821	N
24	Takhatpur	38745	N
25	Pathariya	20041	N
26	Bastar	107353	N
27	Jagdapur	95511	N
28	Makdi	77499	N
29	Farasgaon	70820	N
30	Bade Rajpur	65545	N
31	Tokapal	56361	N
32	Lohandiguda	56247	N
33	Bastanar	44251	N
Total Population not covered under FRU		2038947	

Sl. No	Block	Total ST Population	FRU available (Y)/ not available (N)
1	Ambikapur	110407	Y
2	Wadrafnagar	94927	Y
3	Rajpur	78428	Y
4	Surajpur	74148	Y
5	Sitapur	68001	Y
6	Balrampur	66265	Y
7	Udaypur	50673	Y
8	Pathalgaon	121198	Y
9	Farsabahar	64631	Y
10	Jashpur	54977	Y
11	Lailunga	82923	Y
12	Raigarh	56498	Y
13	Gharghoda	46718	Y
14	Kharsia	44105	Y
15	Sarangarh	31402	Y
16	Kota	89940	Y
17	Pendra Road Gorella	76813	Y
18	Bilaspur	44550	Y
19	Masturi	39665	Y
20	Bilha	20715	Y
21	Kondagaon	130940	Y
22	Bakavand	95290	Y
23	Keskal	66197	Y
24	Darbha	65766	Y
Total Population covered under FRU		1675177	

Appendix-2.4.1
(Referred to in Para 2.4.2, Page 63)
Organogram of administrative setup in Chhattisgarh



Appendix-2.4.2
(Referred to in Para 2.4.7.2, page 67)
Statement on outstanding temporary advances during 2009-14

(₹ in lakh)

Name of districts	Opening Balance as on 1.4.2013	Advance of current year 2013-14	Total	Adjustment in 2013-14	Closing Balance as on 31.3.2014
Surguja	13.10	0.18	13.28	0.0	13.28
Dantewara	0.91	0.0	0.91	0.0	0.91
Durg	14.97	53.94	68.91	4.45	64.46
Bastar	83.71	5.32	89.03	51.01	38.02
Jashpur	0.61	4.22	4.83	4.21	0.62
Kanker	0.37	0.00	0.37	0.00	0.37
Korba	13.02	0.00	13.02	0.00	13.02
Koria	0.97	0.00	0.97	0.96	0.01
Raipur	24.90	0.00	24.90	0.06	24.84
Rajnandgaon	12.42	1.46	13.88	1.83	12.05
Dhamtari	6.53	0.00	6.53	0.64	5.89
Janjgir	1.50	0.00	1.50	0.00	1.50
Bilaspur	0.12	0.59	0.71	0.00	0.71
Kabirdham	719.08	0.00	719.08	0.00	719.08
Raigarh	0.00	0.25	0.25	0.00	0.25
Mahasamund	0	0	0	0	0
Total	892.21	65.96	958.17	63.16	895.01

(Source: CA report for the year 2013-14)

Appendix-2.4.3

(Referred to in Para 2.4.9.3, page 73)

Details of NBA share released under convergence with MNREGA

Name of Block	Name of GP	No of sanctioned toilets	Sanctioned cost (₹ in crore)	NBA share released (₹ in crore)	No. of completed toilets
Bastar	Turpura	680	0.68	0.31	315
	Fafni	465	0.47	0.21	340
Bakawand	Bajawand	322	0.32	0.15	110
	Badedewada	284	0.28	0.13	200
Darbha	Lendra	415	0.42	0.19	220
	Kakanar	208	0.21	0.07	96
Kawardha	Paneka	127	0.13	0.06	Nil
	Kritbandha	142	0.14	0.07	Nil
	Dashrangpur	176	0.18	0.08	Nil
	Raitapar	176	0.18	0.08	Nil
Total		2995	3.01	1.35	1281

(Source: Information provided by DWSCs)

Appendix-2.4.4

(Referred to in Para 2.4.13, page 77)

Details of working and sanction strength in selected four districts during 2009-14

District	Year	DPC		DC		BC		CO		CC		Assistant		Total	
		S	W	S	W	S	W	S	W	S	W	S	W	S	W
Bastar	2009-10	0	0	1	0	14	14	0	0	0	0	0	0		
	2010-11	0	0	1	0	14	14	0	0	0	0	0	0		
	2011-12	0	0	1	0	14	14	0	0	0	0	0	0		
	2012-13	0	0	1	0	14	14	0	0	0	0	0	0		
	2013-14	3	0	6	0	14	14	3	0	0	0	0	0	26	14
Kabirdham	2009-10	0	0	2	1	4	4	1	1	0	0	1	1		
	2010-11	0	0	2	1	4	4	1	1	0	0	1	1		
	2011-12	0	0	2	1	4	4	1	1	28	18	1	1		
	2012-13	0	0	2	1	4	4	1	1	9	2	1	1		
	2013-14	1	0	2	2	4	3	1	0	9	2	1	1	18	8
Raipur	2009-10	1	1	2	2	15	11	1	0	124	0	1	0		
	2010-11	1	1	2	2	15	15	1	0	124	90	1	0		
	2011-12	1	1	2	2	15	15	1	0	124	111	1	0		
	2012-13	1	1	2	2	15	14	1	0	124	111	1	0		
	2013-14	1	0	2	1	15	3	1	0	124	31	1	0	144	35
Surguja	2009-10	1	0	2	1	19	10	0	0	50	16	0	0		
	2010-11	1	0	2	2	19	10	0	0	50	12	0	0		
	2011-12	1	0	2	2	19	10	0	0	50	12	0	0		
	2012-13	1	0	2	0	7	2	1	0	11	0	0	0		
	2013-14	1	0	2	2	7	7	1	1	11	4	0	0	22	14
														210	71

(Source: Information provided by DWSCs) S- Sanction, W-Working

Appendix- 2.5.1

(Referred to in paragraph 2.5.6.2 (a), page 85)

Statement showing unadjusted temporary advances under Kishori Shakti Yojana

(Amount in ₹)

Sl. No	Name of Project	Total amount of advance	Amount Adjusted	Amount deposited through challan in to Government account	Amount Unadjusted	Period of outstanding advance
1.	Balod	537500	404000	0	133500	2011-14
2.	Baikuntpur	537500	426430	13470	97600	2009-10, 2013-14
3.	Bemetara	537500	449855	60045	27600	2011-12
4.	Bodla	537500	420100	0	117400	2011-13
5.	Charama	537500	427500	0	110000	2013-14
6.	Dondilohara	537500	502000	0	35500	2013-14
7.	Geedam	537500	502500	0	35000	2009-10
8.	Korba Rural	537500	532959	0	4541	2013-14
9.	Kunkuri	537500	394000	46000	97500	2010-11
10.	Mahasamund Rural	537500	170900	0	366600	2010-14
11.	Nawagarh	537500	171500	0	366000	2010-14
12.	Nawagarh-1	309700	200120	0	109580	2009-14
13.	Sahaspur-Lohara	537500	518000	0	19500	2010-11
14.	Sakti	475050	350650	0	124400	2012-14
Total		7234750	5470514	119515	1644721	

Appendix-2.5.2

(Referred to in paragraph 2.5.6.3(a), page 85)

Statement showing shortfall in six day trainings

Name of district	Name of project	Name of Sectors	No of days for which training imparted	No of days training not imparted
Korba	Korba rural	Lemru	3 days in 2013-14	3
Balod	Balod	Jhalmala	3 days in 2013-14	3
Bemetara	Bemetara	Bemetara urban, Chorbhathi, Balsamund and Chandnu	5 days in 2010-11	1
		Charbhata and Chandunu	1 day in 2011-12	5
		Balsamund	2 days in 2011-12	4
		Dhadi	3 days in 2011-12	3
		Khandsara	5 days in 2011-12	1
	Nawagarh	Nawagarh (Batch-1)	3 days in 2009-10	3
		Nandghat	5 days in 2009-10	1
Jashpur	Kunkuri	Raikera	4 days in 2013-14	2
Kanker	Charama	Lakhanpuri, Kottara	5 days in 2013-14	1

Appendix- 2.5.3

(Referred to in paragraph 2.5.7.2(a), page 90)

Statement showing unadjusted temporary advances under Sabla Yojana

(Amount in ₹)

Sl. No	Name of Project	Total amount of advance	Amount adjusted	Amount unadjusted	Period of outstanding advance
1.	Arang	81000	61560	19440	2013-14
2.	Balodabazar	232500	165000	67500	2013-14
3.	Bastar	498900	318900	180000	2013-14
4.	Kasdol	459700	405387	54313	2011-14
5.	Khairagarh	528900	356131	172769	2011-12, 2013-14
6.	Palari	528900	507510	21390	2011-12, 2013-14
7.	Pratappur	498900	468900	30000	2013-14
8.	Raipur Urban-1	316236	58602	257634	2011-14
9.	Raipur Urban-2	270000	Nil	270000	2011-12, 2013-14
10.	Rajnandgaon Rural	708900	446902	261998	2012-14
11.	Surajpur	422650	354900	67750	2013-14
12.	Tokapal	521150	341150	180000	2012-14
Total		5067736	3484942	1582794	

Appendix- 2.5.4

(Referred to in paragraph 2.5.7.8, page 94)

Statement showing status of school dropout girls rejoining education

Name of Project	Year	Total no. of drop out girls	No of girls rejoined education	Percentage of girls rejoined to education
Arang	2012-13	1910	11	0.58
	2013-14	1737	32	1.84
Bastar	2012-13	637	191	29.98
	2013-14	3987	1196	30.00
Dongargaon	2011-12	944	24	2.54
	2012-13	500	31	6.20
	2013-14	506	30	5.93
Kasdol	2011-12	865	768	88.79
	2012-13	763	669	87.68
	2013-14	465	465	100.00
Khairagarh	2012-13	2175	8	0.37
	2013-14	2982	13	0.44
Palari	2013-14	1955	430	21.99
Pratappur	2011-12	1606	180	11.21
	2012-13	2196	165	7.51
	2013-14	2109	140	6.64
Raipur Urban-1	2013-14	388	2	0.51
Raipur Urban-2	2011-12	2163	8	0.37
	2012-13	1932	6	0.31
	2013-14	2077	5	0.24
Simga	2013-14	3092	1279	41.36
Surajpur	2013-14	1404	150	10.68

Appendix-2.6.1

(Referred to in paragraph 2.6.6.2, page 102)

Statement showing status of outstanding Mobilization Advance

(Amount in ₹)

SL. No	Agreement number	Work order date	Stipulated time for completion	Actual date of completion of work as per agreement	Amount of Advance Sanctioned		Amount of Advance Recovered		Amount of Advance Recovered less	
					Mobilization	Equipment	Mobilization	Equipment	Mobilization	Equipment
Division - Bhanupratappur										
1	4DL/2010-11	09/06/2010	18 months including rainy season	Dec-11	20000000	0	16117640	0	3882360	0
2	5DL/2010-11	30/06/2010	18 months including rainy season	Dec-11	34183800	0	23270825	0	10912975	0
3	26DL/2010-11	23/09/2010	18 months including rainy season	Mar-12	49700000	24850000	13450147	10869305	36249853	13980695
4	47DL/2010-11	14/12/2010	16 months including rainy season	Apr-12	27361000	0	7788919	0	19572081	0
Division – Dantewara										
5	70 DL/ 2010-11	30/10/2010	20 months including rainy season	June-12	39358512	0	29970747	0	9387765	0
									80005034	13980695
Total									9,39,85,729	

Appendix-2.6.2

(Referred to in paragraph 2.6.6.3, page 103)

Statement of extra cost due to application of tack coat on freshly laid bituminous surface

(₹ in lakh)

SL. No.	Name of division	Name of the Work	Agreement No	Extra Quantity of Tack Coat applied (in Sq.m.)	Rate/Sq.m	Extra Cost
1	2	3	4	5	6	7 (5*6)
1	Surajpur (B/R)	Bishnupur –Odgy	46 DL/ 2010-11	247383.00	6	14.84
		Premnagar-Ramanujganj-Kishnapur	41 DL/2010-11	394786.40	11	43.42
		Patna-Bhayathan	5 DL/2010-11	162747.70	12	19.52
		Pratappur-Bhayathan	6 DL/2010-11	232723.75	13	30.25
3	Dantewara (B/R)	Dantewada-Pondum-Katekalyan Road	70/DL, 2010-11	78590.22	15	11.78
		Barsoor-Geedam-Dantewada-Kirandul-Jagargunda-Mariyagudam Road	5/DL, 2011-12	581158.04	25	145.28
4	Ramanujgang (B/R)	Widening to two lane in km 0.00 to 35.00 of Balrampur-Chando-Samri road (S.H. 12A)	34/DL, 2010-11	242705.00	11	26.70
		Widening to two lane in Km. 0.00 to 38.00 of Pratappur Semarsot Road	21/DL, 2010-11	238850.00	11	26.27
		Widening to two lane in km 0.00 to 50.00 of Wadrafnagar-Janakpur-Balangi road (S.H.-3)	32/DL, 2010-11	350000.00	11	38.50
		Improvement in Km 0.00 to 48.00 of Kameshwarnagar-/Ramchandrapur-Lurgi Road	23/DL, 2010-11	182292.82	11	20.05
		Improvement of riding quality in Km. 65 to 110 of Ambikapur-Ramanujganj Road	22/DL, 2010-11	629860.90	11	69.28
		Widening to 2 lane in Km. 0 to 60 on Rajpur Kusmi Road under LWE Project	41/DL, 2010-11	420000.00	11	46.20
		Widening to Two Lane Km. 0.00to 17.00 of Kusmri-Samri Road (I/c RCC slab culverts)	20/DL, 2010-11	64262.80	11	7.06
Total						499.15

Appendix- 2.6.3

(Referred to in paragraph 2.6.6.4, page 103)

Statement showing extra cost due to execution of BM with excess thickness instead of DBM and execution of below specification work

(Amount in ₹)

Agreement No.	Name of item Adopted	Quantity (in Cu.m.)	Area (in Sq.m.)	Thickness (in m.)	Rate/Cu.m.	Amount (in ₹)	Name of item to be Adopted	Required thickness (in m.)	Quantity (in Cu.m.)	Rate/Cu.m	Amount	Extra cost
1	2	3	4	5	6	7 (3*6)	8	9	10	11	12 (10*11)	13 (12-7)
14/DL 2010-11	BM	2950.77	39343.60	0.075	5127	15128598.00	DBM	0.05	1967.18	6148	12094223.00	3034375.00
	SDBC	2012.50		0.025	3900	7848750.00	SDBC	0.025	2012.50	3900	7848750.00	0.00
6/DL 2010-11	BM	1647.30	21964.00	0.075	5127	8445707.10	DBM	0.05	1098.20	6148	6751734.00	1693974.00
	SDBC	1134.00		0.025	3900	4422600.00	SDBC	0.025	1134.00	3900	4422600.00	0.00
Below specification of work						35845655.10	Extra cost					4728349.00

Appendix-2.6.4

(Referred to in paragraph 2.6.6.5, page 104)

Statement showing excess payment due to non use of Sensor Paver Finisher

(Amount in ₹)

Agreement No.	Name of item adopted	Quantity (in Cu.m.)	Rate/ Cu.m.	Amount	3 per cent to be deducted for non use of SPF	Amount	Tender Per cent	Remarks
1	2	3	4	5 (3*4)	6	7 (3*6)	8	9
14/DL 2010-11	BM	2950.77	5127	15128598.00	153.81	453857.93	453857.93	Item rate tender
	SDBC	2012.50	3900	7848750.00	117.00	235462.50	235462.50	
6/DL 2010-11	BM	1647.30	5127	8445707.10	153.81	253371.21	224968.30	(-)11.21 Per cent of column 7
	SDBC	1134.00	6512	7384608.00	195.36	221538.24	196703.80	
Below specification of work				38807663.10	Excess payment		1110992.53	

Appendix-2.6.5

(Referred to in paragraph 2.6.6.6, page 105)

Statement showing excess payment due to use of lesser density of mix

Name of the PW Division	Agreement No.	Name of item adopted	Whether Job Mix formula prepared	Quantity	Rate	Amount	Required density	Required quantity of bitumen (in MT)	Actual density	Actual consumption of bitumen (in MT)	Difference	Less consumption of bitumen	Rate of BM (₹ Per MT)	Excess Payment
(B/R) Rajnandgaon	14/DL 2010-11	SDBC	Yes	2012.5	3900	7848750	2.3	231	2.2	221	0.1	10	37823	378230
	6/DL 2010-11	SDBC	No	1134	6512	7384608	2.3	130	2	113	0.3	17	37823	642991
(B/R) Surajpur	5/DL 2010-12	SDBC	No	4069.2	6400	26042835	2.3	468	2.048	417	0.252	51	37823	1928973
(NH) Jagdalpur	10DL 2010-11	SDBC	No	2562	4562	11687844	2.3	295	2.23	286	0.07	9	37823	340407
	38/DL 2010-11	SDBC	No	1819.6	5500	10007745	2.3	209	2.23	203	0.07	6	37823	226938
	11DL/2010-11	SDBC	Yes	5996	5500	32978000	2.3	690	2.23	669	0.07	21	37823	794283
Total				17593		95949782		2023		1909		115		4311822
(B/R) Surajpur	5/DL 2010-11	BM	NA	8600.8	5000	43003855	2.2	643	2.048	599	0.152	44	37823	1664212
(NH) Jagdalpur	10DL 2010-11	BM	NA	9255	3290	30448950	2.2	692	2	629	0.2	63	37823	2382849
	38/DL 2010-11	BM	NA	5991.5	3400	20371131	2.2	448	2	407	0.2	41	37823	1550743
	11DL/2010-11	BM	NA	17988	4700	84543600	2.2	1346	2	1223	0.2	122	37823	4614406
Total				41835		178367536		3129		2859		270		10212210
Grand Total						274317318						385		14524032

Appendix-2.7.1

(Referred to in paragraph no 2.7.2.1, page 107)

Statement showing irregular expenditure on Vikas Yatra

	Name of division	Period	Amount (₹ in lakh)	Allocation
1	PWD, Dn. No. 2 Raipur	2013-14	5.63	Annual Repairs to roads
2	WRD, Dn. Kota	2013-14	6.9	75/4702, Amamuda Diversion Scheme, 23/4700, Arpa Bhaisajhar project, 45/4702, Samdil anicut 41/4702, Gobaripat 41/4702, Sajapali 75/4702, Kathmuda D/S 41/4702,tribal MLW Gobaripat anicut, 45-4702-00-101-0101-3803-97003 v Dulhara feeder, 41/4702 , Salka Diversion Scheme,
3	PWD, Dn. No. 1 Jagdalpur	2013-14	2.71	24-3054-04-337-0000-7510-24-005-V O.M. to rural roads.
4	PWD, Dn. Kondagaon	2013-14	18.25	24-3054 Annual Repairs to different roads.
5	PWD, Dn. Balod	2012-13	72.46	24-3054-03-337-0000-0134-24-005-V Repair and maintenance of roads.
6	PWD, Dn. Kanker	2013-14	25.69	24/3054-04-337-0000-0134-24-005 Annual Repairs to Major District Roads/Other District Roads Operation/Maintenance, 24/3054-03-0134
7	PWD, Dn. Durg	2013-14	28.29	24/3054-04-337-0000-7510-24-005 Ahiwara Berla rd. 24/3054-04-337-0000-7510-24-005 DDB roads.
8	PWD, Dn. Khairagarh	2013-14	30.23	24-3054 Annual Repairs to different roads.
9	PWD, Dn. Dantewada	2013-14	15.00	24/3054-04-0134-Ordinary maintenance of roads
10	PWD, Dn. Bemetara	2013-14	27.85	24-3054 Annual Repairs to different roads.
	Total		233.01	

(PWD-Public Works Division, WRD-Water Resources Division, Dn-Division)

Appendix -2.8.1

(Referred to in paragraph 2.8.7(a), page 114)

Statement showing overcrowding in all the Jails of Chhattisgarh State in March 2014

Sl. No.	Jail	Capacity	No of Prisoners	Excess	Percentage of excess
1	District Jail, Kanker	65	407	342	526
2	Central Jail, Durg	396	1707	1311	331
3	Sub Jail, Katghora	50	204	154	308
4	District Jail ,Mahasamund	70	280	210	300
5	Sub Jail, Ramanujanj	90	345	255	283
6	District Jail, Dantewada	150	543	393	262
7	Sub Jail, Manendragarh	50	174	124	248
8	Sub Jail, Bemetara	50	170	120	240
9	District Jail, Janjgir	70	231	161	230
10	Sub Jail, Surajpur	90	279	189	210
11	Sub Jail, Baloda Bazar	70	207	137	196
12	District Jail, Raigarh	225	646	421	187
13	District Jail, Rajnandgaon	116	320	204	176
14	Central Jail, Bilaspur	1008	2733	1725	171
15	Central Jail, Jagdalpur	579	1514	935	161
16	Sub Jail, Pendra Road	50	130	80	160
17	Central Jail, Raipur	1190	2863	1673	141
18	District Jail, Korba	110	246	136	124
19	Central Jail, Ambikapur	895	1871	976	109
20	District Jail, Jashpur	190	388	198	104
21	Sub Jail, Balod	70	121	51	73
22	Sub Jail, Kabirdham	50	86	36	72
23	Sub Jail, Gariyaband	50	73	23	46
24	Sub Jail, Dongargarh	70	97	27	39
25	Sub Jail, Sarangarh	50	68	18	36
26	District Jail, Dhamtari	90	115	25	28
27	District Jail, Baikunthpur	148	158	10	7
	Total	6042	15976	9934	

Appendix – 2.8.2

(Referred to in paragraph 2.8.8(a), page 118)

Statement showing details of incomplete works of jail infrastructure during the period 2009-13

Sl	Name of Jail	Type of Construction	Nos.	Year of allotment	Amount (₹ in crore)	Date of transfer of amount to PWD	Scheduled date of completion of awarded works.	Up to date Expenditure (₹ in crore)	reasons for delay of works
1	2	3	4	5	6	7	8	9	10
1	Central Jail Bilaspur	Barrack	5	2012-13	1.00	05.12.2012	NA	0	Second tender has been called
2	District Jail Baikuntpur	Barrack for <i>Sashatra Bal</i>	1	2012-13	0.26	25.02.2013	NA	0	PWD submitted new estimate of ₹ 38.79 lakh on 28-05-2012.
3	Sub-Jail Sukma & Narayanpur	Barrack for <i>Sashatra Bal</i>	10	2012-13	1.69	13.9.2012	NA	0.18	Tendering in process
4	District Jail Kanker	Barrack for <i>Sashatra Bal</i>	1	2012-13	0.26	09.05.2012	six month from work awarded	0	Work in progress
5	Central Jail Jagdalpur	Barrack for <i>Sashatra Bal</i>	2	2012-13	0.46	06.10.2012	NA	0	10th tender has been called
6	District Jail Kanker	Barrack for <i>Sashatra Bal</i>	1	2012-13	0.25	06.10.2012	six month from work awarded	0	Work in progress
7	Dist Jail Mahasamund	Barrack for <i>Sashatra Bal</i>	1	2012-13	0.25	10.06.2012	six month from work awarded	0	Work in progress
8	District Jail Damtari	Barrack for <i>Sashatra Bal</i>	1	2012-13	0.25	06.10.2012	six month from work awarded	0.14	Work in progress
9	Sub-jail Ramanujganj	Barrack for <i>Sashatra Bal</i> and toilet	2	2012-13	0.65	23.10.2012	NA	0	Tendering in process
10	Central Jail Bilaspur	Barracks	3	2010-11	0.60	17.11.2011	NA	0	Tendering in process
11	Central Jail Ambikapur	Barracks	3	2010-11	0.60	17.11.2011	25-11-2012	0.42	Work in progress
12	Central Jail Jagdalpur	Barracks	3	2010-11	0.60	17.11.2011	23-10-2012	0.25	Work in progress
13	Central Jail Durg	Barracks	3	2010-11	0.60	17.11.2011	11-04-2013	0.50	Work in progress
14	District Jail Rajnandgaon	Barracks	2	2010-11	0.40	17.11.2011	20-02-2013	0.11	Work in progress
15	District Jail Jaspur	Barracks	2	2010-11	0.40	17.11.2011	NA	0	Tendering in process
16	Sub-Jail Dongargarh	Barracks	1	2010-11	0.20	17.11.2011	08-10-2012	0.12	Work in progress

1	2	3	4	5	6	7	8	9	10
17	District Jail Jaspur	Barracks	3	2011-12	0.60	02.04.2012	NA	0.10	5th tender has been called
18	District Jail Kanker	Barracks	3	2011-12	0.60	02.02.2012	12-10-2013	0.40	Work in progress
19	District Jail Dantewada	Barracks	4+20	2011-12	2.80	02.04.2012	NA	0	Tendering completed but Work not commenced
20	Sub-Jail gariyaband	Barracks	2	2011-12	0.40	02.04.2012	NA	0	Amount given to PWD but amount not deposit in DDO A/C due to non-commencement of work
21	Sub-Jail Ramanujganj	Barracks	2	2011-12	0.40	02.04.2012	28-07-2012	0.33	Work in progress
22	Sub-Jail Dongargarh	Barracks	1	2011-12	0.20	02.04.2012	8-10-2012	0.07	Work in progress
23	Central Jail Durg	Barracks & toilets	9+79	2011-12	2.73	27.02.2013	NA	0	Tendering in process
24	District Jail Damtari	Barracks & toilets	1+8	2011-12	0.43	27.02.2013	NA	0	Tendering in process
25	District Jail Janjgir	Barracks & toilets	1+8	2011-12	0.43	27.02.2013	4-09-2013	0	Tendering in process
26	Sub-Jail baloda-bazar	Barracks & toilets	1+8	2011-12	0.43	27.02.2013	4-09-2013	0.08	Work in progress
27	Sub-Jail Bijapur	Barracks and Hosp.	3+1	2012-13	1.27	7.11.212 and 5.3.13	six month from work awarded	0.27	Work in progress
28	Central Jail Durg	Barracks Hospital & Shabha bawan	5+1+1	2012-13	7.01	04.9.2012	NA	0	Tendering in process
29	Central Jail Bilaspur	Construction of wall	1	2012-13	0.02	09.12.2012	NA	0	Tendering in process
30	District Jail Janjgir	Extension work & barrack	1+2	2012-13	1.22	28.09.2012	six month from work awarded	0	Work in progress
31	Central Jail Durg	Wall Construction	1	2011-12	3.09	05.09.2012	NA	0	Tendering in process
32	District Jail Kanker	Wall Construction	1	2011-12	4.59	31.03.2013	NA	0	PWD submitted new estimate of ₹ 721.35 lakh on 30.05.2012
33	District Jail Damtari	Extension work Jail & staff quarters	1	2012-13	0.79	10.05.2012	NA	0	Revised estimate for ₹94.08 sent on 17-07-2012
34	Central Jail Jagdalpur	New Jail	1	2006-07	3.31	30.03.2010	26-12-2012	0.52	Work in progress
35	Central Jail Ambikapur	New Jail	1	2006-07	3.16	30.03.2010	23-01-2013	0.98	Work in progress
36	Central Jail Ambikapur	Sector wall & Water tank	1+1	2012-13	0.25	25.08.2012	25-04-2014	0.25	Tendering in process
	Total				40.36			4.70	

Appendix – 2.8.3

(Referred to in paragraph 2.8.8(b), page 118)

Statement showing details of incomplete staff amenities during the period 2009-13

Sl	Name of Jail	Type of Construction	Nos.	Year of allotment	Amount (₹ in crore)	Date of transfer	Scheduled date of completion of awarded works.	Up to date Expenditure (₹ in crore)	Reasons for delay of works
1	Central Jail Raipur	Staff quarters	152	2011-12	13.28	17.4.12 & 5.6.12	NA	0.62	Work closed due to land disputed, two work in progress
2	District Jail Rajnandgaon	Staff quarters	10	2012-13	0.70	09.05.2012	NA	0	Tendering in process
3	Central Jail Durg	Staff quarters	4	2012-13	0.95	10.05.2012	NA	0	Tendering in process
4	Central Jail Bilaspur	Staff quarters	15	2012-13	1.21	05.10.2012	NA	0	Tendering in process
5	District Jail Dantewada	Staff quarters	colony	2010-11	2.97	04.10.2010	11/2015	0	Layout work in progress
6	Central Jail Raipur	Traning Centre and Staff quarters	1	2011-12	0.65	05.09.2012	12 month from work awarded	0.23	Work in progress
7	Central Jail Bilaspur	Traning Centre and Staff quarters	1	2011-12	0.65	05.09.2012	NA	0	Tendering in process
8	Central Jail Jagdalpur	Traning Centre and Staff quarters	1	2011-12	0.65	05.09.2012	NA	0	Tendering in process
9	Central Jail Ambikapur	Traning Centre and Staff quarters	1	2011-12	0.65	05.09.2012	28-02-14	0	Excess rate of tender due to process re-call
	Total				21.68			0.85	

Appendix-3.1

(Referred to in paragraph 3.1.2, page 135)

Statement showing excess payment to the contractor towards wrong calculation of price adjustment

S.No	Name of work	Agreement No.	Date of NIT	Date of work order	PAC Amount (₹ in lakh)	Contract Amount (₹ in lakh)	Voucher No. and Date	Amount (₹)	Add extra for floor above top of floor-2 level (Sq. m)	Paid rate (₹)	Payable rate (₹)	Extra payment (₹)
1	Group A – College building etc.	86DL/2009-10	15.09.09	06.01.10	2066.83	3095.28	56DL/14.03.2014	271202105	46792.07	50	0	2339603.5
2	Group B – New Hospital building etc.	87DL/2009-10	15.09.09	06.01.10	2126.98	3186.12	7 DL/15.04.2014	251158695	13845.54	50	0	692277
									13724.22	100	0	1372422
									13482.7	150	0	2022405
									4320	200	0	864000
								658.51	250	0	164627.5	
3	Group C – Residential Hostels	31DL/2009-10	18.05.09	04.09.09	1508.96	2222.96	30.3.2013	190535308	66249.96	26	0	1722498.96
Total												9177834

Appendix-3.2

(Referred to in paragraph 3.1.3(i), page 136)

Statement showing inadmissible payment to contractors due to inclusion of rainy season period for the calculation of Incentive Bonus

(₹ in lakh)

Sl	Name of the work (Agreement No)	Name of the division	Contract amount	Quantum of work executed in rainy season	Percentage of work executed in rainy season	Number of days in rainy season, when contractor executed work	Number of days counted for payment of incentive bonus	Incentive bonus admissible	Incentive bonus paid to the contractor
1	Construction of bridge across Sukha nalla (2DL/09-10)	Bridge division, Raipur	266.00	30.20	11 per cent	92 days (13 weeks)	56 days (eight weeks)	Nil	5.32
2	Construction of Submersible bridge across Parsada Nalla (05/2009-10)	Bridge division, Raipur	159.91	28.15	18 per cent	107 days (15 weeks)	35 days (Five weeks)	Nil	2.48
3	Construction of bridge across Kotigadih nalla (05/10-11)	Bridge division, Raipur	119.64	12.50	11 per cent	31 days (four weeks)	28 days (Four weeks)	Nil	1.39
4	Construction of bridge across Khorsi Nalla (20 DL/2010-11)	Bridge division, Raipur	418.13	73.67	17 per cent	107 days (15 weeks)	84 days (12 weeks)	Nil	10.49
5	Construction of bridge across Sakri river (08DL/08-09)	Bridge division, Rajnandgaon	209.44	53.65	26 per cent	123 days (18 weeks)	28 days (Four weeks)	Nil	2.09
6	Construction of bridge across Maharu Nalla (13 DL/07-08)	Bridge division, Rajnandgaon	240.60	7.15	3 per cent	61 days (nine weeks)	56 days (eight weeks)	Nil	4.72
7	Construction of bridge on Manendragarh-Janakpur road Km 65/10 (31 DL/2005-06)	Bridge division, Ambikapur	900.00	320.98	37 per cent	113 days (16 weeks)	91 days (13 weeks)	Nil	35.61
8	Construction of bridge across Manendragarh – Janakpur road (km 23/10)(32 DL/2005-06)	Bridge division, Ambikapur	1140.00	327.48	29 per cent	214 days (32 weeks)	42 days (Six weeks)	Nil	17.12
9	Construction of bridge across Mahanadi river (12 DL/2006-07)	Bridge division, Jagdalpur	891.00	329.45	37 per cent	245 days (35 weeks)	140 days (20 weeks)	Nil	44.55
TOTAL									123.77

Appendix-3.3*(Referred to in paragraph. 3.1.3(ii) page 136)***Statement showing non-deduction of rainy season period for calculation of Incentive Bonus to contractors***(₹ in lakh)*

Sl	Name of the work (agreement No)	Name of the division	Contract amount	Quantum of work executed in rainy season	Percentage of work executed in rainy season	Number of days in rainy season, where contractor executed work	Number of days counted for payment of incentive bonus	Admissible days for which incentive bonus was to be paid	Admissible amount	Amount paid	Excess amount
1	Construction of bridge on pairy river (01 DL/08-09)	Bridge division, Raipur	974.00	176.27	18 per cent	153 days (22 weeks)	154 days (22 weeks)	one day (nil week)	nil	47.19	47.19
2	Construction of bridge across Mahanadi river (21 DL/08-09)	Bridge division, Raipur	974.00	209.49	22 per cent	183 days (26 weeks)	189 days (27 weeks)	Six days (one weeks)	2.47	48.48	46.01
3	Construction of bridge across Kharjhiti Nalla (19DL/10-11)	Bridge division, Raipur	119.32	49.40	41 per cent	107 days (15 weeks)	112 days (16 weeks)	Five days (one weeks)	2.03	6.01	3.98
4	Construction of Submersible bridge across Kharkhara Nalla (2 DL/10-11)	Bridge division, Raipur	234.99	17.62	7 per cent	62 days (nine weeks)	77 days (11 weeks)	15 days (two weeks)	1.18	6.46	5.28
5	Construction of bridge across Hanf river (29 DL/06-07)	Bridge division, Rajnandgaon	216.90	25.39	12 per cent	29 days (four weeks)	42 days (Six weeks)	13 days (two weeks)	1.09	3.28	2.19
6	Construction of bridge across Sheonath river (21 DL/06-07)	Bridge division, Rajnandgaon	190.00	33.91	18 per cent	31 days (four weeks)	56 days (Eight weeks)	25 days (four weeks)	1.90	3.80	1.90
7	Construction of bridge across Hanf river (24 DL/10-11)	Bridge division, Rajnandgaon	188.00	15.34	8 per cent	35 days (five weeks)	126 days (18 weeks)	91 days (13 weeks)	6.11	8.46	2.35
8	Construction of bridge across Amner river (01 DL/12-13)	Bridge division, Rajnandgaon	186.33	56.15	30 per cent	121 days (17 weeks)	147 days (21 weeks)	26 days (four weeks)	2.11	10.54	8.43
9	Construction of bridge across Godma Nalla (03 DL/12-13)	Bridge division, Jagdalpur	155.00	30.47	20 per cent	36 days (five weeks)	84 days (12 weeks)	48 days (8 weeks)	2.71	4.65	1.94
	Total								27.20	164.28	137.03

Appendix 3.4

(Referred to in paragraph 3.1.4, page 138)

Statement showing undue aid of ₹ 51.54 lakh to contractors due to use of rerolled steel

Sl.No	Name of division	Agreement No.	Name of work	Diameter	Quantity in MT	Rate of re-rolled steel	Amount (₹)	Rate of SAIL	Difference	Undue aid (₹)
1	2	3	4	5	6	7	8	9	10	11
1	EE, PWD (B/R), Dn. Kondagaon	98 DL/ 2013-14	Construction of ITI building i/c water supply, sanitary fitting etc. at Makdi	8mm	1.02	36881.00	37618.62	49100.00	12219.00	12463.38
				10mm	1.02	36207.00	36931.14	48000.00	11793.00	12028.86
				12 mm	1.01	39000.00	39390.00	47500.00	8500.00	8585.00
				16 mm	3.01	34409.00	103571.09	47400.00	12991.00	39102.91
				20 mm	4.05	33735.00	136626.75	51450.00	17715.00	71745.75
				8 mm	1.04	35757.00	37187.28	49100.00	13343.00	13876.72
				10 mm	2.83	35083.00	99284.89	48000.00	12917.00	36555.11
				12 mm	2.92	34409.00	100474.28	47500.00	13091.00	38225.72
				8 mm	2.79	37106.00	103525.74	49100.00	11994.00	33463.26
				10 mm	1.88	36432.00	68492.16	48000.00	11568.00	21747.84
				8 mm	2.76	38454.00	106133.04	49100.00	10646.00	29382.96
				10mm	2.75	37892.00	104203.00	48000.00	10108.00	27797.00
				12 mm	2.89	37106.00	107236.34	47500.00	10394.00	30038.66
				16 mm	1.10	37106.00	40816.60	47300.00	10194.00	11213.40
				20 mm	1.36	36207.00	49241.52	51450.00	15243.00	20730.48
				8 mm	3.49	39465.00	137732.85	49100.00	9635.00	33626.15
				10mm	3.48	38904.00	135385.92	48000.00	9096.00	31654.08
				12 mm	2.12	38117.00	80808.04	47500.00	9383.00	19891.96
				16 mm	0.74	38117.00	28206.58	47300.00	9183.00	6795.42
				20 mm	0.50	37218.00	18609.00	51450.00	14232.00	7116.00
				8 mm	8.45	39231.00	331501.95	49100.00	9869.00	83393.05
				10mm	4.29	38669.00	165890.01	48000.00	9331.00	40029.99
				12 mm	3.30	37883.00	125013.90	47500.00	9617.00	31736.10
				16 mm	2.95	37883.00	111754.85	47300.00	9417.00	27780.15
				20 mm	2.01	36984.00	74337.84	51450.00	14466.00	29076.66
				8 mm	6.75	34826.00	235075.50	49100.00	14274.00	96349.50
				10mm	10.10	34326.00	346692.60	48000.00	13674.00	138107.40
12 mm	8.15	33626.00	274051.90	47500.00	13874.00	113073.10				
			Total		88.76	1031033.00	3235793.39			1065586.61

1	2	3	4	5	6	7	8	9	10	11
2	EE, PWD (B/R), Dn. Kondagaon	164 DL/ 2013-14	100 seated Girls Hostel bldg. at Kondagaon	8mm	4.64	37210.00	172654.40	49100.00	11890.00	55169.60
				10mm	4.58	36535.00	167330.30	48000.00	11465.00	52509.70
				12 mm	2.29	35860.00	82119.40	47500.00	11640.00	26655.60
				16 mm	3.68	35860.00	131785.50	47300.00	11440.00	42042.00
				8mm	2.02	38915.00	78608.30	49100.00	10185.00	20573.70
				10mm	3.03	38235.00	115852.05	48000.00	9765.00	29587.95
				12 mm	4.92	37555.00	184770.60	47500.00	9945.00	48929.40
				16 mm	5.25	35860.00	188265.00	47300.00	11440.00	60060.00
				8mm	3.06	39905.00	122109.30	49600.00	9695.00	29666.70
				12 mm	2.08	38444.00	79963.52	48000.00	9556.00	19876.48
				Total	35.55		1323458.37			385071.13
3	EE, PWD (B/R), Dn. Kondagaon	151 DL/ 2013-14	Govt. High school building Mayur Donger	8mm	5.14	36015.00	185117.10	50100.00	14085.00	72396.90
				10mm	4.93	35515.00	175088.95	49100.00	13585.00	66974.05
				12 mm	5.18	34815.00	180341.70	48600.00	13785.00	71406.30
				Total	15.25		540547.75			210777.25
4	EE, PWD (B/R), Dn. Kondagaon	167 DL/ 2013-14	Higher Secondary school building at Hasalnar block	8mm	5.05	37670.00	190233.50	48100.00	10430.00	52671.50
				10mm	3.46	36995.00	128002.70	47100.00	10105.00	34963.30
				16 mm	5.42	36320.00	196854.40	47300.00	10980.00	59511.60
				8mm	4.08	36534.00	149058.72	48100.00	11566.00	47189.28
				10mm	4.05	35860.00	145233.00	47100.00	11240.00	45522.00
				12 mm	1.95	35186.00	68612.70	46600.00	11414.00	22257.30
Total	24.01		877995.02			262114.98				
5	EE, PWD (B/R), Dn. Kondagaon	163 DL/ 2013-14	Higher Secondary school building at Hangwa block	8mm	3.01	41000.00	123410.00	49600.00	8600.00	25886.00
				10mm	3.04	40350.00	122664.00	48600.00	8250.00	25080.00
				12 mm	5.04	39500.00	199080.00	48000.00	8500.00	42840.00
				16 mm	7.87	39500.00	310865.00	47800.00	8300.00	65321.00
				Total	18.96		756019.00			159127.00
6	EE, PWD (B/R), Dn. Kondagaon	180 DL/ 2013-14	Higher Secondary school at Bijapur	8mm	4.56	39343.00	179404.08	49100.00	9757.00	44491.92
				10mm	5.14	38785.00	202223.02	48000.00	8657.00	44496.98
				12 mm	3.95	37995.00	153200.75	47500.00	8715.00	34424.25
				16 mm	0.51	37995.00	150080.25	47300.00	9305.00	36754.75
				8mm	4.08	36534.00	19377.45	48100.00	10105.00	5153.55
				10mm	4.05	35860.00	146308.80	47100.00	11240.00	45859.20
				12 mm	1.95	35186.00	68612.70	46600.00	11414.00	22257.30
				Total	24.24		919207.05			233437.95

1	2	3	4	5	6	7	8	9	10	11
7	EE, PWD (B/R), Dn. Kondagaon	138 DL/ 2013-14	High school bldg at Silati	8mm	3.20	38250.00	122400.00	49100.00	10850.00	34720.00
				10mm	4.15	37500.00	158737.50	48000.00	9750.00	40462.50
				12 mm	3.09	37500.00	115687.50	47500.00	10000.00	30850.00
				16 mm	4.91	37500.00	115687.50	47300.00	9800.00	30233.00
				Total	15.35		512512.50			136265.50
8	EE, PWD (B/R), Dn. Kondagaon	137 DL/ 2013-14	High school bldg at Hadigaon	8mm	3.05	38250.00	116662.50	49100.00	10850.00	33092.50
				10mm	4.55	37500.00	174037.50	48000.00	9750.00	44362.50
				12 mm	3.02	37500.00	113062.50	47500.00	10000.00	30150.00
				16 mm	5.05	37500.00	113062.50	47300.00	9800.00	29547.00
				Total	15.67		516825.00			137152.00
9	EE, PWD (B/R), Dn. Kondagaon	136 DL/ 2013-14	High school bldg at Bansgaon	8mm	2.08	38000.00	78850.00	48100.00	10100.00	20957.50
				10mm	1.83	37000.00	69540.00	47100.00	9100.00	16653.00
				12 mm	3.47	36000.00	128205.00	46600.00	9600.00	33264.00
				16 mm	3.41	36421.00	124740.00	47300.00	11300.00	38521.70
				8mm	4.41	37770.00	166565.70	48100.00	10330.00	45555.30
				10mm	1.69	37096.00	63831.30	47100.00	9330.00	15767.70
				12 mm	3.06	36421.00	113513.76	46600.00	9504.00	29082.24
				Total	19.94		468650.76			199801.44
10	EE, PWD (B/R), Dn. Kondagaon	97 DL/ 2013-14	C/o Skill Development Center at Kondagaon	8mm	2.34	41107.00	96190.38	49100.00	7993.00	18703.62
				10mm	2.34	40433.00	96190.38	48000.00	6893.00	16129.62
				12 mm	2.34	39759.00	94613.22	47500.00	7067.00	16536.78
				16 mm	2.95	39759.00	93036.06	47300.00	7541.00	17645.94
				Total	9.97		380030.04			69015.96
11	EE, PWD (B/R), Dn. Kondagaon	117 DL/2013-14	C/o 09 nos teachers quarter at Shampur	8mm	5.13	41260.00	211457.50	49100.00	7840.00	40180.00
				10mm	6.00	39810.00	247560.00	48000.00	6740.00	40440.00
				12 mm	4.35	38830.00	173173.50	47500.00	7690.00	33451.50
				16 mm	1.67	38830.00	168910.50	47400.00	8570.00	14311.90
				Total	17.15		801101.50			128383.40
12	EE, PWD (B/R), Dn. Kondagaon	46 DL/ 2013-14	C/o Sub Health Centre at Tamrawand block Makadi	8mm	4.45	41260.00	183607.00	48100.00	48100.00	824674.50
				10mm	2.60	40580.00	180581.00	47100.00	6520.00	29014.00
				12 mm	2.00	39810.00	79620.00	46600.00	6790.00	13580.00
				Total	9.05		443808.00			867268.50
							Grand Total		293.88	1031033.00

Note: The rate for 20 mm steel bar have been compared with the rate of similar product of TISCO

Appendix 3.5

(Referred to in paragraph 3.3.1; page 140)

Statement showing the details of laboratory equipment lying idle with the Government Engineering Colleges

Sl. No	Name of the item	Quantity	Purchase Order No & Date	Invoice No & Date	Value (in ₹)	Period of Idleness (in Year)	Mode of purchase (self / DTE)
1	2	3	4	5	6	7	8
	Government Engineering Colleges Raipur						
1	Shake Table	1	1747 / 31.03.2008	34 / 31.03.2008	14716000	6	DTE
2	Fan regulator using DIAC & TRIAC with PS & motor sl no.61230 PET	1	604 / 08.02.2007	Not available	4400	7	DTE
3	Zero voltage switch with PS sl.no.00217PET 444	1	604 / 08.02.2007	Not available	1980	7	DTE
4	SCR firing ckt using RAMP generator with PS sl.no.96516	1	604 / 08.02.2007	Not available	4070	7	DTE
5	Voltage commutated Thyristorised Chopper with PS sl.no.00787 PET	1	604 / 08.02.2007	Not available	4730	7	DTE
6	Current commutated Thyristorised Chopper with PS sl.no.0325 PET	1	604 / 08.02.2007	Not available	4400	7	DTE
7	2 MHz/FM function generator sweep code 4062	1	462 / 31.01.2007	Not available	163600	7	DTE
8	Guassian noise generator module GNG 100	1	429 / 27.01.2007	4 / 21.02.2007	37500	7	DTE
9	Pre-emphasis & De-emphasis trainer	1	429 / 27.01.2007	4 / 21.02.2007	45000	7	DTE
10	Adaptive delta modulation & de-modulation trainer	1	429 / 27.01.2007	4 / 21.02.2007	115000	7	DTE
11	ASK modulation & de-modulation trainer com-114	1	429 / 27.01.2007	4 / 21.02.2007	148000	7	DTE
12	FSK modulation & de-modulation com-115	1	429 / 27.01.2007	4 / 21.02.2007	155000	7	DTE
13	QPSK modulation & de-modulation com-117	1	429 / 27.01.2007	4 / 21.02.2007	280000	7	DTE
14	Compression Testing Machine	1	870 / 09.02.2009	184/24.03.2009	130000	5	DTE
15	Series & Parallel resonance ckt	2	627 / 05.02.2008	Not available	2700	6	DTE
16	Characteristics of DIAC	2	627 / 05.02.2008	Not available	5250	6	DTE
17	Collpits Oscillator	2	627 / 05.02.2008	Not available	2400	6	DTE
18	Transistor push pull amplifier EE-24	2	627 / 05.02.2008	Not available	3000	6	DTE
19	Flip Flop trainer (RS JK & TEF) EE-73	2	627 / 05.02.2008	Not available	3000	6	DTE
20	Single phase F.W bridge controller rectifier (SCR)	1	623 / 05.02.2008	5 / 10.03.2008	41750	6	DTE
21	SCR triggering using relaxation oscillator	1	623 / 05.02.2008	5 / 10.03.2008	22500	6	DTE
22	DV/DT limitation of SCR	1	623 / 05.02.2008	5 / 10.03.2008	38500	6	DTE
23	Single phase H.W controller	1	623 / 05.02.2008	5 / 10.03.2008	36800	6	DTE
24	DC motor speed control demonstration	1	623 / 05.02.2008	5 / 10.03.2008	215000	6	DTE
25	Thyristor control trainer	1	623 / 05.02.2008	5 / 10.03.2008	209000	6	DTE
26	Single phase to single phase cyclo	1	623 / 05.02.2008	5 / 10.03.2008	210000	6	DTE
27	AC phase control using SCR	1	623 / 05.02.2008	5/10.03.2008	28800	6	DTE
28	Series inverter using SCR	1	623 / 05.02.2008	5 / 10.03.2008	89000	6	DTE
29	Open loop control system	1	623 / 05.02.2008	5 / 10.03.2008	50800	6	DTE

1	2	3	4	5	6	7	8
30	Basic feedback control system	1	623 / 05.02.2008	5 / 10.03.2008	51500	6	DTE
31	Type '0' control system	1	623 / 05.02.2008	5 / 10.03.2008	36800	6	DTE
32	Type '1' control system	1	623 / 05.02.2008	5 / 10.03.2008	35500	6	DTE
33	Type '2' control system	1	623 / 05.02.2008	5 / 10.03.2008	34500	6	DTE
34	Proportional derivative control system	1	623 / 05.02.2008	5 / 10.03.2008	35200	6	DTE
35	Proportional integral derivative	1	623 / 05.02.2008	5 / 10.03.2008	33700	6	DTE
36	Thevenin's Theorem trainer	1	623 / 05.02.2008	5 / 10.03.2008	22300	6	DTE
37	Norton's Theorem trainer	1	623 / 05.02.2008	5 / 10.03.2008	22800	6	DTE
38	Maxwell Bridge trainer	1	623 / 05.02.2008	5 / 10.03.2008	54000	6	DTE
39	Hay's Bridge trainer	1	623 / 05.02.2008	5 / 10.03.2008	57600	6	DTE
40	Wheatstone's Bridge trainer	1	623 / 05.02.2008	5 / 10.03.2008	49500	6	DTE
41	Wein Bridge trainer	1	623 / 05.02.2008	5 / 10.03.2008	56000	6	DTE
42	Anderson's Bridge trainer	1	623 / 05.02.2008	5 / 10.03.2008	56750	6	DTE
43	Schering Bridge trainer	1	623 / 05.02.2008	5 / 10.03.2008	55200	6	DTE
44	De-sauty's Bridge trainer	1	623 / 05.02.2008	5 / 10.03.2008	49500	6	DTE
45	Chopper using SCR trainer	2	631 / 05.02.2008	Not available	12640	6	DTE
46	Series resonance Ckt trainer	2	631 / 05.02.2008	Not available	2400	6	DTE
47	Parallel resonance Ckt trainer	2	631 / 05.02.2008	Not available	2400	6	DTE
48	MS Office 2003 (5 user)	1	2665 / 29.06.2007	3203 / 21.08.2007	85500	6	DTE
49	Autodesk product education set software	1	128 / 10.01.2008	02 / 02.02.2008	892320	6	DTE
50	Power Hacksaw machine	1	721 / 03.02.2009	012 / 30.03.2009	70000	5	DTE
51	Electronic Universal Testing Machine	1	870 / 09.02.2009	194/24.03.2009	394992	5	DTE
52	Rockwell Hardness Testing Machine	1	870 / 09.02.2009	194/ 24.03.2009	27000	5	DTE
53	SOIP trainer system	1	4542 / 23.11.2007	21 / 07.01.2008	1900000	6	DTE
54	Software	49	2389 / 13.02.2008	20 / 21.02.2009	493276	5	self
55	Software	65	2454 / 23.02.2008	25 / 03.03.2008	485932	6	self
56	Software	28	2474 / 25.02.2008	28 / 03.03.2008	497879	6	self
57	Software	3	2476 / 26.02.2008	27 / 06.03.2008	4680	6	self
58	Software	5	2536-38 / 29.01.2009	22 / 13.02.2009, 23-24 / 16.02.2009	1163600	5	self
	Government Engineering Colleges, Jagdalpur				0		
59	Plotter cum Scanner Kyocera Mita KM 3650 W LED	1	4500 / 29.09.2008	B186 / 05.11.2008	1374162	5	DTE
Total					41925811		

Appendix 3.6

(Referred to in paragraph 3.3.1; page 140)

Statement showing the details of laboratory equipment lying idle with the Government Polytechnics

Sl. No	Name of the item	Quantity	Purchase Order No & Date	Invoice No & Date	Value (in ₹)	Period of Idleness (in Year)	Mode of purchase (self/ DTE)
1	2	3	4	5	6	7	8
Government Polytechnics, Gariyaband							
1	Digital Library	1	3125 / 03.07.2009	Not available	6739200	4	DTE
2	Semtek make UPS	49	5054 / 05.11.2009	173 / 07.01.2010	212905	4	DTE
3	HCL desktop computer	49	818 / 17.02.2010	Nil / 17.02.2010	1581592	4	DTE
4	Wood working Lathe M/C	7	1003 / 26.02.2010	95 / Nil	474206	4	DTE
5	Milling M/C working surface	1	1003 / 26.02.2010	95 / Nil	169477	4	DTE
6	Shaper M/C stroke quality	1	1003 / 26.02.2010	95 / Nil	148744	4	DTE
7	Pedestal grinder CI casting of high grade quality	1	1003 / 26.02.2010	95 / Nil	27475	4	DTE
Government Polytechnics, Mahasamund							
8	Digital Compression Testing Machine	1	874 / 09.02.2009	193 / Nil	135200	5	DTE
9	Francis Turbine with working brake drum	1	995 / 26.02.2010	1223 / 25.03.2010	309053	4	DTE
10	Calibration of venturimeter apparatus	1	995 / 26.02.2010	1223 / 25.03.2010	47540	4	DTE
11	Unconfined compression testing machine	1	995 / 26.02.2010	1223 / 25.03.2010	38153	4	DTE
12	Friction in pipe and loss of head apparatus	1	995 / 26.02.2010	1223 / 25.03.2010	35660	4	DTE
13	Determination of CD of notches	1	995 / 26.02.2010	1223 / 25.03.2010	35660	4	DTE
14	Determination of CV, CD, CC for orifices with tank, stand etc	1	995 / 26.02.2010	1223 / 25.03.2010	35840	4	DTE
15	Determination of CD for various mouth pieces	1	995 / 26.02.2010	1223 / 25.03.2010	35881	4	DTE
16	Bernoullis theorem collecting tank channel	1	995 / 26.02.2010	1223 / 25.03.2010	35750	4	DTE
17	Pelton turbine working model	1	995 / 26.02.2010	1223 / 25.03.2010	297020	4	DTE
18	Centre Lathe model	3	756 / 04.02.2009	Not available	731559	5	DTE
19	Motorized CBR three speed laboratory test apparatus	1	995 / 26.02.2010	1223 / 25.03.2010	32150	4	DTE
20	Flexural strength tester	1	995 / 26.02.2010	1223 / 25.03.2010	50870	4	DTE
21	Experimental Bench for DC/AC	1	996 / 26.02.2010	0910010023 / 25.03.2010	49590	4	DTE

1	2	3	4	5	6	7	8
22	AC drive system	1	996 / 26.02.2010	0910010023 / 25.03.2010	30990	4	DTE
23	Diesel engine test rig single cylinder four stroke type	1	5510 / 30.12.2008	368 / 28.02.2009	63168	5	DTE
24	Petrol engine test rig single cylinder four stroke type	1	5510 / 30.12.2008	368 / 28.02.2009	54168	5	DTE
	Government Polytechnics, Koriya						
25	Digital Library	1	3123 / 03.07.2009	44 / 15.07.2009	6739200	4	DTE
26	Lathe Machine model no.500/1000	2	1273 / 28.02.2009	107 / 23.03.2009	744348	5	DTE
27	Desktop Computer	21	1249 / 28.02.2009	M1/165 / 21.03.2009	808395	5	DTE
	Government Polytechnics, Durg						
28	Digital Library	1	4083 / 03.09.2008	38 / 15.09.2008	7290000	5	DTE
	Government Polytechnics, Dhamtari						
29	Digital Library	1	4042 / 29.08.2008	37 / 15.09.2008	7290000	5	DTE
	Government Polytechnics, Raigarh						
30	Digital Library	1	4040 / 29.08.08	36 / 15.09.2008	7290000	5	DTE
	Government Polytechnics, Kanker						
31	Precision Lathe Machine	2	1276/28.02.2009	106/23.03.09	744348	5	DTE
32	Desktop Computer	35	1253/28.02.2009	Not available	1347325	5	DTE
33	Venturimeter Test Rig	1	649/20.12.2011	103/02.02.2012	37050	2	self
34	Losses in Pipe Friction Apparatus	1	649/20.12.2011	103/02.02.2012	27930	2	self
35	Francis Turbine Test Rig	1	1384/14.01.2013	322/07.03.2013	158900	1	self
36	Whirling of shaft apparatus	1	1384/14.01.2013	322/07.03.2013	32234	1	self
37	Motorised Gyroscope	1	1384/14.01.2013	322/07.03.2013	32234	1	self
38	Water Cooler Trainer	1	1390/14.01.2013	1055/28.01.2013	62130	1	self
39	CBR test apparatus	1	420/18.01.2013	952/13.05.2013	54900	1	self
40	Compression Testing Machine	1	420/18.01.2013	952/13.05.2013	139000	1	self
41	Brinell Hardness Testing Machine	1	655/20.12.2011	104/02.02.2012	99750	2	self
42	Metallurgical Microscope	1	647/20.12.2011	73/25.02.2012	22374	2	self
Total					44291969		