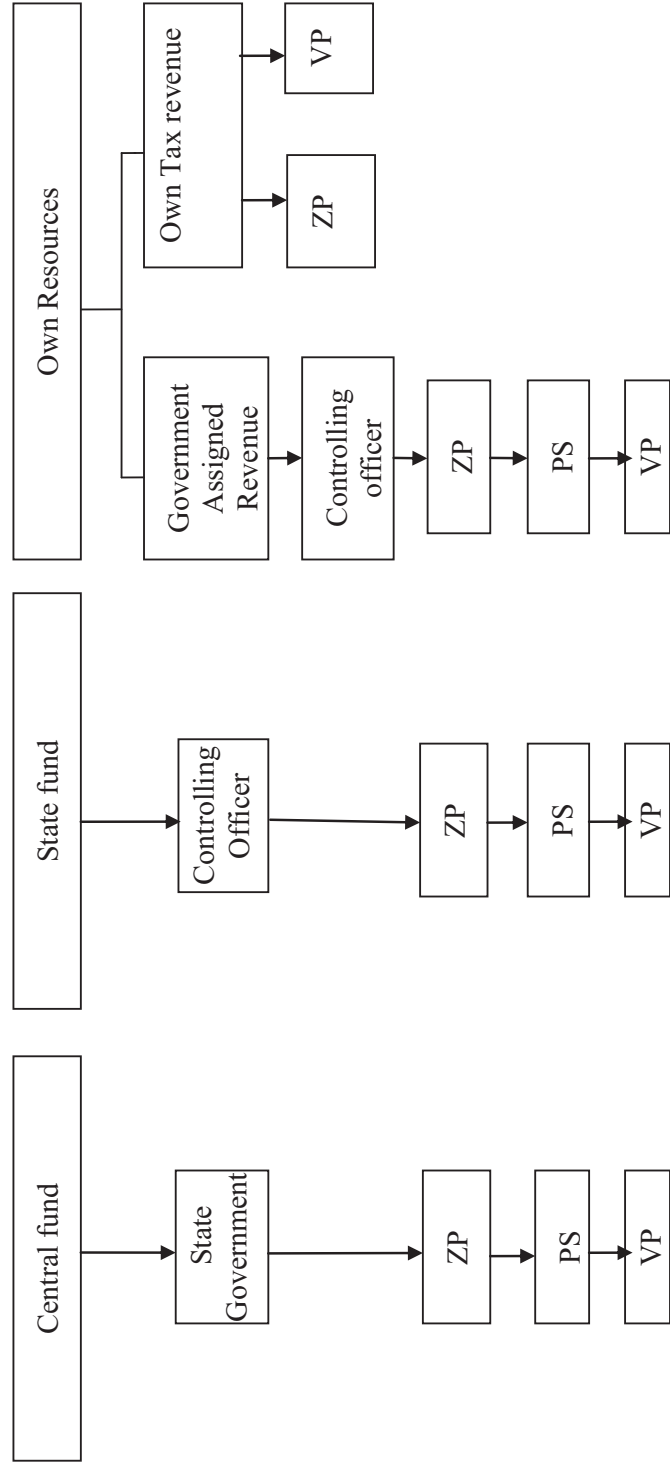

APPENDICES

Appendix I

(Reference: Paragraph 1.4.4; Page No.3)

FUND FLOW STATEMENT



Appendix II (Reference: Paragraph 1.7.3; Page No.6) Details of expenditure incurred on transferred schemes, agency schemes and ZPs own schemes during 2012-13 (₹ in crore)					
Sr. No.	Name of ZP	Expenditure on transferred schemes	Expenditure on agency schemes	Expenditure on ZPs own schemes	Total expenditure
1.	Ahmednagar	1027.03	68.71	32.95	1128.69
2.	Akola	851.50	67.06	63.47	982.03
3.	Amravati	632.62	36.66	15.80	685.08
4.	Aurangabad	672.50	88.61	18.22	779.33
5.	Beed	701.90	73.37	16.22	791.49
6.	Buldhana	636.00	68.00	538.00	1242.00
7.	Chandrapur	1170.91	63.54	81.96	1316.41
8.	Dhule	395.08	88.39	28.77	512.24
9.	Gadchiroli	776.97	60.64	66.13	903.74
10.	Gondia	416.75	33.11	54.14	504.00
11.	Hingoli	279.22	00.00	8.70	287.92
12.	Jalgaon	761.98	52.53	34.31	848.82
13.	Jalna	427.90	50.80	11.05	489.75
14.	Kolhapur	1449.74	88.69	61.20	1599.63
15.	Latur	622.73	32.29	6.02	661.04
16.	Nagpur	1246.52	0.00	0.00	1246.52
17.	Nanded	766.47	71.62	6.82	844.91
18.	Nandurbar	355.74	31.98	90.37	478.09
19.	Nashik	1055.81	124.43	29.84	1210.08
20.	Osmanabad	490.11	35.74	9.81	535.66
21.	Parbhani	404.88	34.21	6.36	445.45
22.	Pune	1029.47	104.49	115.71	1249.67
23.	Ratnagiri	568.59	44.98	8.20	621.77
24.	Raigad	613.50	35.20	59.39	708.09
25.	Sangli	603.38	104.70	19.99	728.07
26.	Satara	813.36	61.57	27.87	902.80
27.	Sindhudurg	382.45	34.40	43.22	460.07
28.	Solapur	1743.99	213.94	73.84	2031.77
29.	Thane	902.54	89.49	83.38	1075.41
30.	Washim	283.26	18.14	26.65	328.05
31.	Yavatmal	769.94	138.98	15.87	924.79
	Total	22852.84	2016.27	1654.26	26523.37

(Source: Information received from CAFOs of 31 ZPs excluding Bhandara and Wardha)

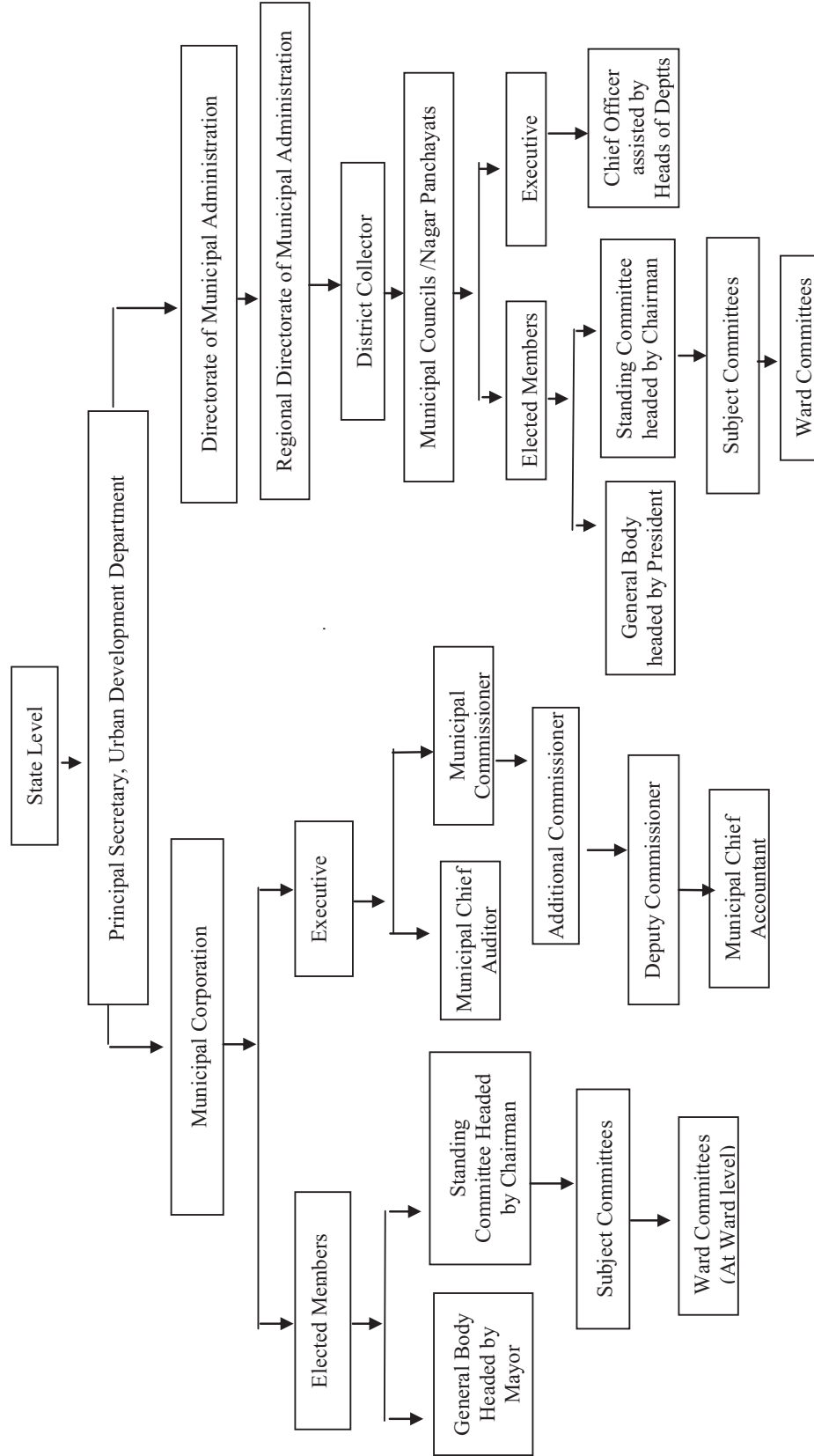
Appendix III				
<i>(Reference: Paragraph 1.10.4; Page No. 9)</i>				
Outstanding paragraphs from the Reports of Director, Local Fund Audit				
Year	Number of outstanding paragraphs		Objected amount (₹ in crore)	
	Government funds	ZPs own funds	Government funds	ZPs own funds
1962-63 to 2001-02	46065	8147	1651.11	185.35
2002-03	4690	1349	139.20	30.82
2003-04	4035	1352	175.35	28.16
2004-05	600	2575	159.62	48.88
2005-06	7640	3245	348.36	64.61
2006-07	8737	2269	661.04	66.53
2007-08	6358	944	557.70	31.48
2008-09	8143	1579	424.16	63.36
2009-10	8903	2851	905.88	109.59
2010-11	8606	3037	993.62	175.24
Total	109178	27154	6016.04	804.02

(Source: As per Annual Audit Review Report of DLFA for the year 2010-11)

Appendix IV

(Reference: Paragraph 2.3.1; Page No. 12)

Organisational structure



Appendix V							
<i>(Reference: Paragraph 2.4.5; Page No.13)</i>							
Financial position of Municipal Corporations							
(₹ in crore)							
Sr. No.	Name of the Corporations	2010-11		2011-12		2012-13	
		Receipts	Expenditure	Receipts	Expenditure	Receipts	Expenditure
1.	Ahmednagar	140.58	118.54	162.05	158.67	175.63	152.11
2.	Akola	137.55	182.24	299.72	273.36	227.62	254.21
3.	Amravati	124.55	113.43	141.75	146.94	257.00	129.00
4.	Aurangabad	263.51	264.42	295.58	287.85	371.22	376.51
5.	Bhiwandi-Nizampur	227.08	265.93	511.93	503.63	266.84	285.00
6.	Chandrapur [■]	00.00	00.00	00.00	00.00	102.58	77.91
7.	Dhule	106.73	96.30	117.67	113.80	136.97	132.54
8.	Jalgaon	128.24	128.14	144.31	184.11	141.15	157.17
9.	Kalyan-Dombivli	749.79	704.39	827.38	771.78	809.90	669.42
10.	Kolhapur	184.33	182.85	151.34	261.79	336.75	323.17
11.	Latur [■]	00.00	00.00	00.00	00.00	62.78	89.73
12.	Malegaon	129.01	134.08	179.74	174.39	274.62	224.57
13.	MCGM	19053.07	17683.94	18268.65	16870.76	22460.80	21275.46
14.	Mira-Bhayander	413.65	361.05	469.92	375.90	534.04	456.05
15.	Nagpur	807.79	833.07	807.08	746.89	939.83	880.76
16.	Nanded-Waghala	348.78	367.11	177.52	95.07	302.51	323.42
17.	Nashik	665.53	647.47	785.86	788.48	956.53	898.19
18.	Navi Mumbai	1011.38	727.18	993.03	854.92	1229.78	1197.58
19.	Parbhani [■]	00.00	00.00	00.00	00.00	68.51	63.55
20.	Pimpri-Chinchwad	1576.10	1013.10	2624.22	1304.92	1700.98	1295.52
21.	Pune	2327.37	2062.29	2679.09	2468.21	2962.12	2826.72
22.	Sangli-Miraj-Kupwad	116.05	108.73	141.35	116.10	146.55	120.23
23.	Solapur	364.40	305.08	156.39	286.92	218.73	309.99
24.	Thane	1038.88	1019.08	1544.59	1332.31	1343.78	1242.85
25.	Ulhasnagar	222.58	239.57	234.60	236.04	266.24	264.28
26.	Vasai-Virar	*	*	521.50	293.80	752.12	541.68
	Total	30136.95	27557.99	32235.27	28646.64	37045.58	34567.62

(Source: Information received from respective Municipal Corporations)

* Information not furnished by the Corporation

■ Corporation created in 2012-13

Appendix VI								
<i>(Reference: Paragraph 2.4.6; Page No.13)</i>								
Arrears of property tax as on 31 March 2013								
(₹ in crore)								
Sr. No	Name of Municipal Corporation	Opening balance of arrears	Current demand	Total demand	Recovery			Closing balance
					Current	Arrears	Total	
1.	Ahmednagar	71.31	45.04	116.35	15.37	13.31	28.68	87.67
2.	Akola	8.07	12.33	20.40	8.65	7.11	15.76	4.64
3.	Amravati	22.86	49.00	71.86	21.86	00.00	21.86	50.00
4.	Aurangabad	14.21	85.79	100.00	58.12	0.00	58.12	41.88
5.	Bhiwandi-Nizampur	10.81	18.37	29.18	9.75	9.29	19.04	10.14
6.	Chandrapur	2.08	8.07	10.15	5.88	1.38	7.26	2.89
7.	Dhule	11.48	6.39	17.87	3.63	4.32	7.95	9.92
8.	Jalgaon	17.79	22.93	40.72	18.59	4.78	23.37	17.35
9.	Kalyan-Dombivli	130.98	192.66	323.64	138.67	41.48	180.15	143.49
10.	Kolhapur	12.05	26.13	38.18	22.58	15.07	37.65	0.53
11.	Latur	2.11	7.00	9.11	6.05	1.60	7.65	1.46
12.	Malegaon	9.55	8.73	18.28	4.95	3.48	8.43	9.85
13.	MCGM	9018.45	3657.08	12675.53	1509.81	471.67	1981.48	10694.05
14.	Mira-Bhayander	49.61	99.28	148.89	69.92	17.41	87.33	61.56
15.	Nagpur	112.46	98.32	210.78	84.76	77.64	162.40	48.38
16.	Nanded-Waghala	5.97	10.36	16.33	9.07	2.99	12.06	4.27
17.	Nashik	39.82	56.04	95.86	43.28	19.86	63.14	32.72
18.	Navi Mumbai	68.20	365.20	433.40	291.38	29.89	321.27	112.13
19.	Parbhani	2.27	5.50	7.77	1.56	2.44	4.00	3.77
20.	Pimpri-Chinchwad	95.80	128.91	224.71	99.82	43.47	143.29	81.42
21.	Pune	686.53	830.91	1517.44	464.93	177.00	641.93	875.51
22.	Sangli-Miraj-Kupwad	20.24	25.52	45.76	16.77	7.54	24.31	21.45
23.	Solapur	85.30	51.60	136.90	37.63	10.60	48.23	88.67
24.	Thane	105.92	188.08	294.00	30.13	209.00	239.13	54.87
25.	Ulhasnagar	158.25	95.56	253.81	30.90	19.93	50.83	202.98
26.	Vasai-Virar	33.75	65.60	99.35	43.61	20.56	64.17	35.18
	Total	10795.87	6160.40	16956.27	3047.67	1211.82	4259.49	12696.78

(Source: Information received from respective Municipal Corporations)

Appendix VII

(Reference: Paragraph 2.4.6; Page No.14)

Arrears of water charges as on 31 March 2013

(₹ in crore)

Sr. No	Name of Municipal Corporation	Opening balance of arrears	Current demand	Total demand	Recovery			Closing balance
					Current	Arrears	Total	
1.	Ahmednagar	16.12	60.78	76.90	4.19	3.59	7.78	69.12
2.	Akola	4.01	4.01	8.02	1.99	1.93	3.92	4.10
3.	Amravati *	0	0	0	0	0	0	0
4.	Aurangabad	40.93	18.20	59.13	15.76	0.00	15.76	43.37
5.	Bhiwandi-Nizampur	14.25	12.01	26.26	5.52	2.70	8.22	18.04
6.	Chandrapur #	0	0	0	0	0	0	0
7.	Dhule	8.88	6.20	15.08	2.77	2.19	4.96	10.12
8.	Jalgaon	8.20	14.49	22.69	11.13	2.80	13.93	8.76
9.	Kalyan-Dombivli	30.04	43.99	74.03	27.73	6.67	34.40	39.63
10.	Kolhapur	8.56	27.61	36.17	29.86	0.00	29.86	6.31
11.	Latur *	0.00	0.00	0.00	0.00	0.00	0.00	0.00
12.	Malegaon	9.34	7.40	16.74	3.76	3.18	6.94	9.80
13.	MCGM	732.66	589.93	1322.59	432.05	160.98	593.03	729.56
14.	Mira-Bhayander	2.77	29.77	32.54	28.13	1.57	29.70	2.84
15.	Nagpur	79.39	94.26	173.65	84.29	0.00	84.29	89.36
16.	Nanded-Waghala	1.28	2.13	3.41	1.83	0.73	2.56	0.85
17.	Nashik	21.00	32.83	53.83	26.13	12.72	38.85	14.98
18.	Navi Mumbai	0.00	65.72	65.72	65.64	0.00	65.64	0.08
19.	Parbhani	2.87	6.07	8.94	0.71	0.70	1.41	7.53
20.	Pimpri-Chinchwad	70.62	38.16	108.78	12.66	14.13	26.79	81.99
21.	Pune	309.63	65.00	374.63	67.87	0.00	67.87	306.76
22.	Sangli-Miraj-Kupwad	10.63	16.25	26.88	12.24	4.21	16.45	10.43
23.	Solapur	44.76	27.05	71.81	19.09	7.40	26.49	45.32
24.	Thane	52.54	69.96	122.50	17.83	49.19	67.02	55.48
25.	Ulhasnagar	83.11	5.62	88.73	2.32	0.00	2.32	86.41
26.	Vasai-Virar	5.44	31.27	36.71	28.92	5.92	34.84	1.87
	Total	1557.03	1268.71	2825.74	902.42	280.61	1183.03	1642.71

(Source: Information received from respective Municipal Corporations)

* Water supply by Maharashtra Jeevan Pradhikaran

Private water supply service

Appendix VIII

(Reference: Paragraph 2.4.7; Page No.14)

Statement of item-wise expenditure of all Municipal Corporations during the year 2008-09 to 2012-13

(₹ in crore)

Items of expenditure	2008-09		2009-10		2010-11		2011-12		2012-13	
	Total Expenditure	Percentage to total	Total Expenditure	Percentage to total	Total Expenditure	Percentage to total	Total Expenditure	Percentage to total	Total Expenditure	Percentage to total
1. Administration										
(a) Establishment	4735	19.50	4674	16.51	6700	24.31	7307	25.51	9941	28.76
(b) Others	850	3.50	1692	5.98	613	2.22	622	2.17	546	1.58
2. Recovery of taxes	131	0.54	00.00	00.00	00.00	00.00	00.00	00.00	00.00	00.00
3. Street lighting	368	1.52	321	1.13	449	1.63	592	2.07	652	1.89
4. Water Supply	1857	7.65	1154	4.08	3700	13.43	3474	12.13	3900	11.28
5. Public Security	164	0.68	74	0.26	117	0.42	107	0.37	117	0.34
6. Public Health	1736	7.15	572	2.02	1187	4.31	1266	4.42	1052	3.04
7. Drainage and sewerage	1121	4.62	506	1.79	1163	4.22	1065	3.72	1028	2.97
8. Construction works	5048	20.79	7082	25.02	3505	12.72	3834	13.38	4440	12.84
9. Transport	69	0.28	104	0.37	97	0.35	205	0.72	331	0.96
10. Education	1182	4.87	477	1.68	777	2.82	786	2.74	899	2.60
11. Expenditure on weaker sections	541	2.23	237	0.84	227	0.82	443	1.55	553	1.60
12. Extraordinary expenditure and loans extended	687	2.83	266	0.94	440	1.60	680	2.37	449	1.30
13. Other expenditure	5789	23.84	11149	39.38	8583	31.15	8266	28.85	10661	30.84
Total of Sr. No. 2 to 13	18693	77.00	21942	77.51	20245	73.47	20718	72.32	24081	69.66
Total expenditure	24278	100	28308	100	27558	100	28647	100	34568	100

(Source: Information received from respective Corporations)

Appendix IX

(Reference: Paragraph 2.4.8 Page No.14)

Financial position of Municipal Councils showing receipts, expenditure and arrears of property tax and water charges for the year 2012-13

(₹ in crore)

District	Sr. No.	Name of Municipal Councils	Receipt	Expenditure	Total demand of Property Tax	Arrears in Property Tax	Total demand of water charges	Arrears in water charges
1	2	3	4	5	6	7	8	9
Ahmednagar	1	Devlali Pravara	11.34	10.92	0.49	0.03	0.46	0.04
	2	Kopargaon	25.05	24.19	2.63	0.50	2.42	0.55
	3	Pathardi	7.71	9.98	1.59	1.06	0.40	0.11
	4	Rahata pimplas	0.00	0.00	0.00	0.00	0.00	0.00
	5	Rahuri	13.36	13.75	0.77	0.15	0.87	0.55
	6	Sangamner	32.21	24.62	3.30	0.62	2.28	0.58
	7	Shirdi	18.91	13.56	3.40	1.24	0.94	0.46
	8	Shrigonda	8.21	1.82	1.01	0.09	0.35	0.16
	9	Shrirampur	38.24	39.11	3.37	3.11	2.82	2.75
Dhule	10	Dondaicha Varwade	40.24	41.27	1.18	0.23	1.38	0.66
	11	Sindkheda NP	0.00	0.00	0.00	0.00	0.00	0.00
	12	Shirpur Waravade	53.02	45.90	1.81	0.05	1.69	0.03
Jalgaon	13	Amalner	40.16	35.57	3.22	1.54	2.16	0.96
	14	Bhadgaon	3.61	3.06	2.38	1.40	1.22	0.64
	15	Bhusaval	41.06	38.85	16.03	7.47	2.71	1.43
	16	Chalisgaon	53.91	52.30	3.55	0.79	1.65	0.19
	17	Chopada	15.17	13.76	2.00	0.60	1.37	0.37
	18	Dharangaon	2.40	4.32	0.99	0.35	0.61	0.18
	19	Erandol	11.61	11.35	0.88	0.08	0.68	0.02
	20	Faizpur	9.77	9.00	0.96	0.38	0.77	0.25
	21	Jamner	18.36	13.29	1.44	0.66	0.94	0.61
	22	Pachora	19.46	14.04	4.58	2.90	0.98	0.18
	23	Parola	5.05	9.23	1.21	0.48	0.84	0.35
	24	Raver	5.19	5.80	0.70	0.07	0.62	0.06

1	2	3	4	5	6	7	8	9
Jalgaon	25	Savda	4.76	4.64	0.68	0.13	0.45	0.03
	26	Yawal	8.88	8.93	0.62	0.05	0.48	0.04
Kolhapur	27	Gadhinglaj	10.24	10.08	2.04	0.43	0.78	0.20
	28	Ichalkaranji	147.25	127.77	14.90	2.47	5.82	1.70
	29	Jaysingpur	13.76	12.39	2.13	0.60	0.84	0.20
	30	Kagal	14.56	20.95	1.45	0.63	0.67	0.08
	31	Kurundwad	11.35	5.99	0.64	0.15	0.78	0.19
	32	Malkapur	1.54	1.37	0.28	0.01	0.09	0.01
	33	Murgud	6.87	5.76	0.20	0.02	0.23	0.00
	34	Panhala	3.43	2.79	0.13	0.08	WCNA	WCNA
	35	Vadgaon	12.78	9.39	0.67	0.15	0.44	0.14
Nandurbar	36	Nandurbar	21.20	24.22	4.86	0.85	1.88	0.26
	37	Navapur	4.47	5.13	1.48	0.77	0.51	0.20
	38	Shahada	9.26	9.33	2.10	0.69	1.98	0.95
	39	Taloda	4.42	5.24	0.83	0.38	0.33	0.21
Nashik	40	Bhagur	4.87	3.93	0.33	0.15	0.27	0.09
	41	Igatpuri	8.87	8.39	0.80	0.19	0.62	0.29
	42	Manmad	24.91	23.60	1.64	0.46	2.59	2.22
	43	Nandgaon	5.87	5.85	0.44	0.14	0.68	0.26
	44	Satana	11.86	11.30	9.43	8.17	0.64	0.19
	45	Sinner	17.49	16.70	5.05	1.24	1.59	0.20
	46	Trimbak	4.10	3.62	0.51	0.05	0.21	0.03
	47	Yeola	11.44	6.36	1.95	0.35	0.82	0.14
Pune	48	Alandi	0.06	0.04	0.03	0.01	0.01	0.00
	49	Baramati	31.81	35.19	4.18	1.46	1.43	0.45
	50	Bhor	7.74	9.08	1.09	0.50	0.82	0.47
	51	Daund	20.84	14.90	0.93	0.22	0.95	0.17
	52	Indapur	11.66	14.76	1.82	0.83	0.62	0.08
	53	Jejuri	6.19	8.53	0.65	0.26	0.31	0.10
	54	Junnar	8.62	5.29	1.03	0.28	0.72	0.21
	55	Lonavala	30.36	23.21	5.86	1.38	4.89	2.47
	56	Saswad	9.92	8.75	2.27	0.64	1.24	0.31

1	2	3	4	5	6	7	8	9
Pune	57	shirur	6.71	14.80	1.85	0.47	0.88	0.31
	58	Talegaon Dabhade	21.45	15.74	6.17	2.42	4.08	1.83
Ratnagiri	59	Chiplun	18.37	17.28	4.27	1.41	1.03	0.33
	60	Dapoli	6.87	5.34	1.18	0.35	0.33	0.12
	61	Devrukh NP	0.61	0.75	0.41	0.13	0.32	0.11
	62	Guhagar NP	0.64	1.32	0.14	0.01	0.14	0.01
	63	Khed	7.57	6.85	1.32	0.47	0.56	0.20
	64	Lanja NP	0.27	0.23	0.14	0.03	0.10	0.02
	65	Rajapur	7.78	8.27	0.46	0.12	0.27	0.10
	66	Ratnagiri	29.17	26.63	5.71	2.87	3.02	0.56
Raigad	67	Alibag	11.73	11.19	2.69	0.62	1.10	0.47
	68	Karjat	14.46	13.02	3.18	1.49	0.70	0.23
	69	Khopoli	43.75	39.51	5.84	1.94	1.01	0.31
	70	Mahad	10.53	8.08	2.53	1.10	0.57	0.23
	71	Matheran	4.44	9.26	0.22	0.04	0.00	0.00
	72	Murud-Janjira	3.38	3.30	0.54	0.21	0.24	0.04
	73	Panvel	74.06	59.06	10.84	3.87	4.40	1.20
	74	Pen	13.73	11.31	2.88	0.61	1.43	0.34
	75	Roha	14.32	9.58	2.14	0.43	0.79	0.13
	76	Shriwardhan	6.19	6.31	0.42	0.08	0.22	0.04
	77	Uran	11.80	11.10	2.05	0.58	1.68	0.61
Sangli	78	Ashta	19.30	20.33	0.83	0.38	0.26	0.10
	79	Islampur	20.09	17.83	1.92	0.57	1.93	0.26
	80	Jat	0.78	0.25	0.07	0.07	0.06	0.06
	81	Tasgaon	16.51	18.40	0.83	0.29	0.74	0.14
	82	Vita	23.89	20.80	2.36	1.60	1.73	0.36
Satara	83	Karad	29.17	42.19	0.04	0.01	0.03	0.01
	84	Mahabaleshwar	26.37	17.25	1.15	0.28	1.37	0.44
	85	Malkapur	7.79	6.31	1.60	0.38	0.96	0.02
	86	Mhaswad	7.77	2.75	0.45	0.10	0.56	0.22
	87	Panchgani	22.43	11.59	1.83	0.92	WCNA	WCNA
	88	Phaltan	24.45	23.05	3.55	1.07	1.85	0.86
	89	Rahimtpur	8.57	6.68	0.41	0.16	0.37	0.11

1	2	3	4	5	6	7	8	9
Satara	90	Satara	73.66	53.49	13.37	5.89	3.63	1.44
	91	Wai	13.53	13.05	1.79	0.37	1.18	0.36
Sindhudurg	92	Kankavali	5.76	2.41	0.56	0.05	0.16	0.05
	93	Malvan	7.34	6.74	0.72	0.08	0.26	0.02
	94	Sawantwadi	13.86	10.65	0.77	0.04	1.07	0.06
	95	Vengurla	8.85	3.63	0.55	0.10	0.16	0.00
Solapur	96	Akkalkot	0.00	0.00	0.00	0.00	0.00	0.00
	97	Barshi	58.00	50.87	6.59	2.52	6.73	3.16
	98	Dudhani	0.00	0.00	0.00	0.00	0.00	0.00
	99	Karmala	2.44	5.34	1.06	0.44	0.82	0.16
	100	Kurduwadi	8.94	8.82	0.81	0.35	1.60	0.33
	101	Mangalwedha	9.08	7.46	0.61	0.13	0.41	0.10
	102	Maindargi	3.77	3.24	0.20	0.10	0.18	0.03
	103	Pandharpur	42.40	44.68	4.19	1.59	2.89	1.29
Thane	104	Sangola	18.18	15.97	0.77	0.03	0.86	0.13
	105	Ambernath	117.91	70.73	10.87	1.21	2.43	0.58
	106	Dahanu	14.59	18.76	2.85	0.36	1.09	0.59
	107	Jawhar	5.05	4.97	0.60	0.30	0.36	0.08
	108	Kulgaon Badlapur	108.04	113.40	9.77	2.22	WCNA	WCNA
Akola *	109	Palghar	16.72	10.97	7.91	4.28	1.70	0.96
	110	Akot	0.37	0.33	2.45	1.19	0.00	0.00
	111	Balapur	7.50	7.34	0.29	0.06	0.00	0.00
	112	Murtizapur	26.85	24.63	0.49	0.03	1.74	1.69
	113	Patur	0.00	0.00	0.00	0.00	0.00	0.00
Amravati	114	Telhara	16.53	7.00	0.33	0.07	0.48	0.07
	115	Chandur Rly	9.44	8.49	0.38	0.18	0.28	0.11
	116	Chikhali	37.52	0.24	1.97	0.89	1.08	0.68
	117	Dhamangaon Rly	10.90	9.66	0.95	0.62	0.52	0.14
	118	Achalpur	61.71	49.57	5.99	1.80	4.52	2.29
	119	Anjangaon	10.61	6.44	0.90	0.07	WCNA	WCNA
	120	Chandur Bazar	4.71	6.30	0.48	0.22	0.75	0.22
	121	Chikhaldara	5.00	5.21	0.24	0.06	WCNA	WCNA
	122	Daryapur	11.30	3.53	0.53	0.67	0.00	0.00
	123	Morshi	11.77	19.84	1.36	0.49	1.64	0.41
124	Warud	12.24	6.07	2.81	1.20	1.19	0.29	

1	2	3	4	5	6	7	8	9
Amravati	125	Shendurjanaghat	9.54	8.34	0.28	0.03	0.28	0.04
Aurangabad	126	Gangapur	9.60	7.82	0.58	0.22	1.19	0.92
	127	Kannad	8.14	6.48	1.08	0.60	1.51	1.04
	128	Khultabad	4.85	3.94	0.24	0.05	0.32	0.06
	129	Paithan	13.76	15.41	0.65	0.59	1.06	1.01
	130	Vaijapur	16.41	27.65	1.67	0.31	0.64	0.10
	131	Sillod	12.83	8.42	1.54	0.92	1.77	1.54
Beed	132	Ambejogai	20.39	14.92	2.56	0.22	3.04	0.57
	133	Kaij	7.15	7.15	3.11	2.30	1.21	0.63
	134	Beed	49.96	47.14	7.06	4.10	9.06	6.04
	135	Dharur	5.12	4.45	0.20	0.10	0.71	0.34
	136	Georai	10.04	6.09	0.76	0.48	1.48	1.02
	137	Majalgaon	5.67	8.22	0.45	0.02	1.93	1.69
	138	Parli Vajinath	42.19	17.94	2.73	1.24	2.29	1.36
Bhandara	139	Pavni	3.77	5.86	0.31	0.07	0.36	0.03
	140	Bhandara	45.68	46.81	2.23	0.61	1.93	0.49
	141	Tumsar	0.00	0.00	0.00	0.00	0.00	0.00
Buldhana	142	Buldana	23.77	30.76	3.63	0.82	1.57	0.52
	143	Deulgaon Raja	11.44	10.23	0.75	0.31	0.30	0.09
	144	Khamgaon	47.64	32.88	4.70	1.73	1.40	0.60
	145	Sindkhedraja	6.83	5.77	0.64	0.45	0.21	0.09
	146	Nandura	11.66	11.92	1.60	0.85	0.82	0.57
	147	Chikhali	37.52	24.42	1.97	0.89	1.08	0.68
	148	Malkapur	21.43	23.67	1.80	0.57	0.02	0.01
	149	Mehkar	34.99	16.02	1.45	0.12	0.92	0.08
	150	Lonar	0.00	0.00	0.00	0.00	0.00	0.00
	151	Shegaon	15.86	16.83	2.39	0.85	1.60	0.55
	152	Jalgaon Jamod	3.93	5.19	0.40	0.21	WCNA	WCNA
Chandrapur	153	Chandrapur	0.00	0.00	0.00	0.00	0.00	0.00
	154	Ballarpur	25.71	24.96	2.79	0.44	0.00	0.00
	155	Bhadrawati	17.04	22.10	1.37	0.43	0.54	0.26
	156	Brahmapuri	18.45	8.26	1.97	0.71	0.60	0.25
	157	Mul	7.80	5.89	0.95	0.34	0.42	0.19
	158	Rajura	17.87	10.65	0.76	0.10	0.39	0.06

1	2	3	4	5	6	7	8	9
Chandrapur	159	Warora	7.87	0.12	0.01	0.00	0.01	0.00
Gadchiroli	160	Desaiganj	14.49	16.32	0.44	0.03	0.39	0.12
	161	Gadchiroli	15.95	16.59	2.34	0.59	0.71	0.20
Gondia	162	Tirora	20.67	28.65	0.73	0.25	0.00	0.00
	163	Gondia	111.33	107.77	8.26	4.88	0.00	0.00
Hingoli	164	Hingoli	9.86	8.28	1.70	0.42	1.71	0.64
	165	Kalamnuri	5.64	5.50	0.17	0.03	0.29	0.18
	166	Basmath	17.90	20.91	2.62	1.78	1.12	0.77
Jalana	167	Bhokardan	0.43	2.86	0.31	0.07	0.29	0.12
	168	Partur	4.23	7.61	0.27	0.03	0.30	0.08
	169	Jalna	0.53	0.60	0.26	0.20	0.06	0.05
	170	Ambad	7.28	0.26	0.34	0.11	0.70	0.51
Latur	171	Latur	0.00	0.00	0.00	0.00	0.00	0.00
	172	Ahmedpur	10.67	7.09	0.61	0.02	0.73	0.03
	173	Ausa	6.61	6.01	0.48	0.02	0.63	0.41
	174	Nilanga	9.48	6.24	4.22	3.68	4.24	3.62
	175	Udgir	28.73	23.19	2.60	0.49	1.77	0.62
Nagpur	176	Kalmeshwar	10.82	11.76	0.77	0.09	0.82	0.07
	177	Kamptee	15.60	18.06	1.27	0.73	3.44	2.49
	178	Katol	30.56	30.95	1.74	0.33	0.93	0.12
	179	Mowad	6.56	1.32	0.12	0.02	0.11	0.01
	180	Narkhed	12.81	15.63	0.69	0.34	0.52	0.21
	181	Umred	37.55	30.87	1.47	0.54	0.88	0.28
	182	Saoner	35.42	14.23	1.47	0.53	0.45	0.04
	183	Khapa	13.65	11.11	0.20	0.03	0.20	0.09
	184	Ramtek	8.34	4.56	0.48	0.04	0.47	0.18
	185	Mohapa	10.83	6.30	0.14	0.02	0.10	0.01
Nanded	186	Billoli	3.89	5.33	0.38	0.04	0.54	0.14
	187	Loha	0.36	6.08	0.33	0.09	0.17	0.06
	188	Degloor	12.01	11.22	0.60	0.09	1.11	0.41
	189	Dharmabad	10.89	3.94	0.15	0.02	0.33	0.07
	190	Hadgaon	5.01	0.81	0.33	0.09	0.64	0.37
	191	Kandhar	4.99	5.33	0.38	0.04	0.54	0.14
	192	Kinwat	8.41	5.84	0.49	0.09	0.23	0.08
	193	Mudkhed	12.11	44.78	0.20	0.03	0.27	0.05

1	2	3	4	5	6	7	8	9
Nanded	194	Mukhed	13.35	9.15	0.68	0.25	0.69	0.36
	195	Umari	2.71	6.53	0.17	0.03	0.23	0.02
	196	Bhokardan	0.00	0.00	0.00	0.00	0.00	0.00
	197	Mahur	0.00	0.00	0.00	0.00	0.00	0.00
	198	Ardhapur	0.00	0.00	0.00	0.00	0.00	0.00
	199	Kundalwadi	1.57	2.30	0.16	0.09	0.17	0.11
Osmanabad	200	Kallam	7.43	5.57	0.47	0.16	0.91	0.56
	201	Omerga	7.69	8.09	0.76	0.26	0.55	0.28
	202	Paranda	6.95	13.05	0.25	0.04	0.16	0.06
	203	Tuljapur	4.21	9.02	0.22	0.06	0.45	0.08
	204	Bhoom	6.16	5.11	0.41	0.12	0.73	0.29
	205	Murum	4.11	5.22	0.16	0.05	0.23	0.05
	206	Naldurg	4.22	4.81	0.12	0.02	0.17	0.02
Parabhani	207	Gangakhed	12.54	12.76	0.35	0.23	1.22	0.91
	208	Purna	6.55	4.47	0.53	0.09	0.31	0.15
	209	Sonpeth	6.79	7.56	0.12	0.02	0.10	0.02
	210	Jintur	13.58	0.00	0.62	0.29	1.51	1.03
	211	Selu	11.98	11.97	1.14	0.54	2.40	2.23
	212	Manwath	0.10	0.12	0.00	0.00	0.01	0.00
	213	pathri	8.49	7.18	0.35	0.12	0.28	0.09
Wardha	214	Hinganghat	0.00	0.00	0.00	0.00	0.00	0.00
	215	Arvi	8.75	7.56	0.75	0.14	0.02	0.00
	216	Pulgaon	0.00	0.00	0.00	0.00	0.00	0.00
	217	Wardha	0.00	0.00	0.00	0.00	0.00	0.00
	218	Sindi	6.00	5.20	0.40	0.17	0.30	0.13
	219	Deoli	0.00	0.00	0.00	0.00	0.00	0.00
Washim *	220	Mangrulpir	11.71	12.27	0.90	0.21	0.35	0.16
	221	Karanja Lad	22.18	21.02	2.45	1.06	WCNA	WCNA
	222	Risod	12.14	11.30	2.13	0.55	0.57	0.15
	223	Washim	57.42	35.86	8.40	5.06	2.12	1.58
Yawatmal	224	Yavatmal	31.00	63.29	10.52	7.22	WCNA	WCNA
	225	Darwaha	8.31	7.70	0.55	0.06	0.78	0.64
	226	Digras	17.19	16.60	0.00	0.00	0.00	0.00
	227	Ghatanji	6.37	5.98	1.09	0.71	0.33	0.10
	228	Pandharkawda	19.03	16.39	1.03	0.23	0.68	0.04

1	2	3	4	5	6	7	8	9
Yawatmal	229	Pusad	23.83	22.44	0.90	0.18	1.62	0.46
	230	Umarkhed	21.98	14.58	1.29	0.52	0.72	0.37
	231	Wani	9.60	8.62	1.91	1.17	0.87	0.24
	232	Ner Nababpur	8.78	3.71	0.49	0.11	0.55	0.15
	233	Arni	5.74	3.71	0.81	0.33	0.91	0.53
Total			3701.94	3296.82	410.98	156.83	215.57	91.86

(Source: Information received from respective Municipal Councils)

Information wherever not furnished by any Municipal Council has been indicated as '0'.

WCNA= Water Charges not applicable as water is being supplied by Maharashtra Jeevan Pradhikaran

Appendix X					
<i>(Reference: Paragraph 3.2.2.1; Page No. 23)</i>					
Statement showing non-return/short-return of interest on cancelled/curtailed projects					
(₹ in crore)					
Sl. No.	Name of the ULB	Name of the project	Interest worked out at 12.5 per cent*	Interest refunded	Outstanding interest
1	2	3	4	5	6
1.	SRA, Nagpur	Jay Bajrang Nagar (cancelled)	1.77	0.73	1.04
		North Zone Nagpur (cancelled)	3.23	0	3.23
		Nagpur-3 (Curtailed)	0.09	0	0.09
		Nagpur-2 (Curtailed)	1.25	0	1.25
		Nagpur-6 (Curtailed)	0.47	0	0.47
		Nagpur (W) (Curtailed)	3.76	0	3.76
		Nagpur-4 (Curtailed)	0.9	0	0.9
2.	Amravati Municipal Corporation	Phase-I (Cancelled)	1.77	0	1.77
		Phase-II (Cancelled)	1.53	0	1.53
3.	Nashik Municipal Corporation	Bhimwadi & Shivajiwadi (cancelled)	5.01	1.97	3.04
4.	Malegaon Municipal Corporation	Phase-VIII (cancelled)	2.21	0.98	1.23
5.	Pune Municipal Corporation	Kondhawa (cancelled)	3.71	0	3.71
		Lohgaon (cancelled)	7.91	0	7.91
		Kothrud (cancelled)	2.97	0	2.97
		Hadapsar (curtailed)	4.28	0	4.28
		Street Vendors (cancelled)	0.14	0	0.14
6.	NMMC	BSUP project, Phase-I (cancelled)	11.44	7.75	3.69
	Total		52.44	11.43	41.01

* At Prime Lending Rate

Source: CSMC minutes and information collected by audit from ULBs/statutory agencies

Appendix XI					
(Reference: Paragraph 3.2.2.1; Page No. 23)					
Statement showing non-return of accrued interest on BSUP/IHSDP grants					
(₹ in crore)					
Sr. No.	Name of ULB	Grant received by ULBs (Central /State)	Accrued interest on parked grants	Interest refunded	Out-standing interest amount
1.	Kolhapur Municipal Corporation	21.33	3.13	0	3.13
2.	Ashta Municipal Council (Sangli)	24.94	1.08	0	1.08
3.	Malegaon Municipal Corporation (Nashik)	133.85	5.14	3.53	1.61
4.	Dondaicha Municipal Council (Dhule)	54.23	0.48	0	0.48
5.	Dhule Municipal Corporation	53.75	0.31	0	0.31
6.	Jamner Municipal Council (Jalgaon)	18.99	0.56	0	0.56
7.	Amalner Municipal Council (Jalgaon)	9.71	0.1	0	0.1
8.	Aurangabad Municipal Corporation	5.88	1.4	0	1.4
9.	Latur Municipal Corporation	54.53	0.49	0	0.49
10.	Naldurg Municipal Council (Osmanabad)	9.29	0.24	0	0.24
11.	Buldhana Municipal Council	23.77	1.22	0	1.22
12.	Mira Bhayander Municipal Corporation	48.22	7.35	0	7.35
13.	Nashik Municipal Corporation	115.25	10.48	0	10.48
14.	Nanded Waghala Municipal Corporation	495.69	10.67	0	10.67
Total		1069.43	42.65	3.53	39.12

Source: Information furnished by ULBs

Appendix-XII

(Reference: Paragraph 3.3.1; Page No.24)

Statement showing cancelled/curtailed BSUP-IHSDP projects

Sl. No.	Name of ULBs / Cancelled BSUP Project	No. of DUs sanctioned	Date of sanction	No. of DUs cancelled/ curtailed	Project cost	GoI share	GoM share	ULB and beneficiaries Share	Date of cancellation	Reasons for cancellation/ curtailment	(₹ in crore)
1	2	3	4	5	6	7	8	9	10	11	
BSUP (cancelled/curtailed projects)											
1.	Navi Mumbai MC (01 project)	13600	28.11.06	13600	299.80	139.44	80.42	79.93	12.09.11	NMMC undertook (November 2006) construction of 13,600 DUs at a cost of ₹ 299.80 crore under BSUP. NMMC could not implement the project as the land belonged to CIDCO which did not hand over the proposed site. NMMC surrendered the grants (January 2009/ May 2010) to the SLNA. The project was entrusted to CIDCO (August 2010) by the State Government but till February 2014, the project has not been commenced by CIDCO.	

1	2	3	4	5	6	7	8	9	10	11
2.	Pune MC (07 projects)	32953	28.08.06 to 28.11.06	26650	300.69	144.09	93.57	63.02	12.09.11 to 03/2013	The Municipal Corporation cancelled/curtailed execution of 26,650 of 32,953 DUs sanctioned under BSUP on the plea of non-availability of land, resistance from land owners for delay in getting compensatory Transfer of Development Rights, price escalation <i>etc.</i> This clearly indicated poor planning and lack of coordination in implementation of the projects.
3.	Pimpri Chinchwad MC (02 projects)	18290	06.10.07 to 24.02.09	11570	597.65	239.47	143.14	215.05	12.09.11 to 03.12.13	Of the 18,290 DUs sanctioned, 5,040 DUs meant for Pimpri Chinchwad New Town Development Authority project was cancelled due to non-availability of land and beneficiaries' reluctance to shift and construction of 6,530 out of 13,250 DUs for EWS project could not commence for want of clear site and the State Government submitted to CSMC (December 2013) proposal for cancellation of the work.
4.	Nagpur (Statutory Agency) (08 projects)	15907	28.11.06 to 21.02.09	11526	449.29	231.03	197.07	21.20	12.09.11 to 19.07.12	Resistance from beneficiaries for relocation, tenant rights issues, high rise/monolithic concrete construction method <i>etc.</i>

1	2	3	4	5	6	7	8	9	10	11
5.	Nashik MC (05 projects)	9280	28.11.06	4800	85.82	46.84	22.12	16.86	12.09.11 and 19.07.12	Non-availability of land and inability of ULB to relocate the project site and change in location, opposition from nearby residents <i>etc.</i>
	Total for BSUP project	90030		68146	1733.25	800.87	536.32	396.06		
IHSDP (cancelled/curtailed projects)										
6.	Amravati MC (03 projects)	4251	22.10.08 to 28.01.09	4251	95.44	56.12	35.38	3.93	30.5.11 to 19.07.12	The Municipal Corporation proposed execution of three projects comprising construction of 4,251 DUs (October 2008/January 2009) under IHSDP on private and State Government land involving 3.52 ha and 19.99 ha respectively. However, no effective steps were taken for transfer of State Government land as well as acquisition of private land though the same was proposed in DPRs. The projects were cancelled in May 2011 and July 2012. As a result, the beneficiaries remained deprived of the benefits of the projects.

1	2	3	4	5	6	7	8	9	10	11
7.	Katol Municipal Council (01 project)	1418	27.02.07	683	9.15	7.58	1.29	0.29	31.3.12	The selection of site was not proper. The site in question was not free from encumbrances and land use was not taken into account by the consultant while submitting DPR. ULB had penalized the consultant but the project was curtailed.
8.	Narkhed Municipal Council (01 project)	680	15.05.07	69	1.72	0.53	1.20	Included in State Share	19.07.12	69 out of 680 proposed DUs were cancelled as they fell in the low-line area, which was not found fit for construction.
	Total for IHSDP project	6349		5003	106.31	64.23	37.87	4.22		
	Grand Total for BSUP and IHSDP projects	96379		73149	1839.56	865.10	574.19	400.28		

Source: CSMC minutes and replites furnished by ULBs/statutory agencies

Appendix-XIII

(Reference: Paragraph 3.3.2: Page No. 24)

Statement showing non-commencement of works in test-checked projects

Sl. No.	Name of ULBs/Statutory agencies	Name of test-checked project	Date of sanction/Revision	Sanctio ned/ Revised project cost (₹ in crore)	No. of DUs finally taken up for execution	DUs completed	DUs allotted	DUs in progress	DUs not started	Sanctio ned cost of non-started DUs (₹ in crore)	Reasons for non-commencement of works
1	2	3	4	5	6	7	8	9	10	11	12
1.	Mumbai Board of MHADA	LIG housing for mill workers	14.12.2006	737.78	8082	6948	2683	00	1134	113.62	Non-transfer of respective textile mill land to Mumbai Board of MHADA.
		Transit Shelters	14.12.2006		3918	3204	2616	00	714		
2.		Permanent Transit Shelters	14.12.2006	245.53	6832	6549	4750	72	211	7.58	Non-availability of clear site.
3.	MBMC	MBMC	11.11.2009	279.55	4136	0	0	1082	3054	205.07	Delay in construction of transit shelters and non-shifting of beneficiaries form construction sites.
4.	Thane MC	Thane-I	28.2.2012	193.91	4621	2387	1332	1964	270	11.33	Tendering process started.
5.	KDMC	KDMC-I	06.12.2007	338.88	8142	307	300	3650	4185	174.18	Non-availability of clear site and dispute on price escalation with contractors.
6.		Yerawada	05.02.2009	140.82	4000	2099	2099	1191	710	24.99	Delay in payment of contribution and submission of required documents by beneficiaries.
7.	Pune MC	Pune-Dormitory	14.12.2006	5.26	1594	0	0	289	1305	4.31	Land problem and escalation in cost of work.
8.		Hadapsar	9.11.2012	39.83	2408	1748	407	660	0	0	Construction delayed due to land problems and escalation in cost of work.

1	2	3	4	5	6	7	8	9	10	11	12
9.	PCMC	EWS	06.10.2007	228.08	6720	5580	1554	426	714	24.23	Non-acquisition of designated lands.
10.		PCMC-II	28.09.2006	94.98	4960	1540	1040	700	2720	52.09	Construction of DUs started without obtaining NOC from Defence authorities. Matter is sub-judice.
11.	KBMC	KBMC-I	29.12.2008	77.33	1634	460	0	560	614	29.06	Change in construction site due to encroachment on designated land.
12.	Nashik MC	Chunchale: I, II and III	28.11.2006	125.35	6000	1280	800	2480	2240	46.8	Uneven site condition and dispute between NMC and the contractor for payment of price escalation.
13.		New Nashik (CIDCO)	19.7.2012	67.29	2800	1,100	340	360	1340	32.2	Non-availability of designated land, public agitation against execution of project at designated site, change of site etc.
14.	SRA, Nagpur	Nagpur- III	23.2.2012	56.88	1017	398	398	446	173	9.68	Reluctance of beneficiaries to shift to DUs in multi-storied buildings.
15.		Nagpur SRA (PPP)	19.7.2012	116.72	1694	0	0	160	1534	105.7	Poor response to PPP project, delay in getting environment clearance and building plans.
16.	Nanded MC	Integrated Housing- I	29.12.2006	87.06	4132	2933	2933	722	477	10.05	Delay in selection of beneficiaries, getting beneficiaries contribution etc.
17.		Integrated Housing- II	20.12.2007	256.83	7820	4756	4599	1571	1493	49.03	Delay in selection of beneficiaries, getting beneficiaries contribution etc.
18.		NTC project	18.12.2009	217.01	5136	0	0	00	5136	217.01	Non transfer of National Textile Mill/Gurudwara lands as proposed in DPR, Court cases etc.
Total (BSUP)				3309.09	85646	41289	25851	16333	28024	1116.93	
IHSDP											
19.	Wai (Council)	Wai	03.02.2009	6.89	342	0	0	168	174	3.51	Encroachment on proposed site, delay in changing of nature of reservation of land, beneficiaries reluctance etc.
20.	Kolhapur MC	Kolhapur	12.12.2006	8.60	761	761	724	0	0	0	Project completed.
21.		Sangli MC	26.02.2009	93.88	3798	0	0	1395	2403	59.4	Opposition from beneficiaries for ground floor DUs, land problems etc.

1	2	3	4	5	6	7	8	9	10	11	12
22.	Ashta (Council)	Ashta	27.02.2007	15.99	1256	1204	1175	52	0	0	Work in progress.
23.	Malegaon MC	Malegaon-III	15.01.2009	28.24	1440	1344	0	0	96	1.88	Delay in vacating encroachments on site, uneven site condition and relocation of site.
24.		Malegaon-V	15.01.2009	29.31	1440	720	0	432	288	5.86	
25.		Malegaon-XIX	23.03.2012	53.05	1440	0	0	240	1,200	44.21	
26.	Dondicha (Council)	DPR-II	10.12.2008	23.97	1050	998	998	52	0	0	Work in progress.
27.		Dhule-I	28.02.2009	23.58	966	906	276	60	0	0	Work in progress.
28.	Dhule MC	Dhule-II	13.03.2012	34.96	1200	0	0	480	720	20.98	Poor response in tendering and delay in award of contracts.
29.	Jammer (Council)	Jammer	29.11.2007	15.61	1238	1104	0	134	0	0	Work in progress.
30.	Amalner (Council)	Amalner	28.02.2009	12.05	462	414	0	48	0	0	Work in progress.
31.	Aurangabad MC	Aurangabad	27.02.2007	11.84	617	288	256	11	318	6.1	Beneficiaries' contribution not received.
32.	Naldurg (Council)	Naldurg	9.01.2008	20.69	1206	302	0	76	828	14.21	No clear land was available due to encroachments.
33.	Anjangaon (Council)	Anjangaon Surji	10.12.2008	21.91	816	0	0	124	692	18.58	Non transfer of designated Government land.
34.	Chandur Railway (Council)	Chandur Railway	16.12.2008	6.82	347	231	0	88	28	0.55	Late receipt of grants and beneficiaries' willingness to construct DUs themselves.
35.	Murtijapur (Council)	Murtijapur-I	10.12.2008	24.56	1003	198	80	344	461	11.29	Government land not transferred to ULBs though taken up with the Collectorate.
36.		Murtijapur-II	20.3.2012	21.34	620	0	0	18	602	20.72	Government land not transferred to ULBs though taken up with the Collectorate.

1	2	3	4	5	6	7	8	9	10	11	12
37.	Buldhana (Council)	Buldhana-I	19.10.2007	12.52	892	762	679	130	00	0	Allotment of work to beneficiaries in lieu of contractor.
38.	Khamgaon (Council)	Khamgaon I	27.02.2008	27.37	1430	922	162	508	0	0	Work in progress.
39.		Khamgaon-II	20.03.2012	22.24	710	22	0	27	661	20.71	Work in progress.
40.	Lonar (Council)	Lonar	22.10.2008	17.84	700	126	0	210	364	9.28	Work in progress.
41.	Katol (Council)	Katol	01.05.2012	10.53	735	644	525	13	78	1.12	Work in progress.
42.		Narkhed-I	19.07.2012	6.95	611	444	421	4	163	1.85	Grants received very late resulting in late payment to contractor. Later on, the contractor demanded current rate for balance construction which was not accepted by the ULB.
43.	Narkhed (Council)	Narkhed-II	30.05.2011	36.85	1603	0	0	285	1318	30.3	Beneficiaries were constructing the DUs however, cost overrun made them reluctant for opting the scheme thereby delaying the work.
44.		Bhandara-I	30.09.2008	22.99	1169	650	201	51	468	9.2	Delay in tendering process and poor response from bidders.
45.	Bhandara (Council)	Bhandara-II	30.05.2011	38.75	1544	128	0	371	1045	26.23	Delay in tendering process and poor response from bidders.
46.	Wardha (Council)	Wardha	30.07.2008	12.50	634	346	0	72	216	4.26	Work in progress.
47.	Pulgaon (Council)	Pulgaon	26.11.2008	8.12	302	102	0	18	182	4.89	Land problem.
48.	Sawantwadi (Council)	Sawantwadi	27.02.2008	1.34	62	62	62	0	0	0	Project completed.
Total (IHSDP)				671.29	30394	12678	5559	5411	12305	315.13	
Grand Total (BSUP+IHSDP)				3980.38	116040	53967	31410	21744	40329	1432.06	

Note: Of the 51 test-checked projects, two were infrastructure projects (there was no construction of DUs) and one project was cancelled. Of the 48 projects, in two projects (Sl. No. 20 and 48), there was no delay in commencement of DUs and all the DUs were completed.

Source: CSMC minutes, monthly progress reports and replies furnished by ULBs/statutory agencies

Appendix-XIV (Reference: Paragraph 3.4.1; Page No.31)										
Statement showing delay in award of works in test-checked projects leading to cost overrun (₹ in crore)										
Sl. No.	Name of ULB	Name of project (Date of sanction)	DUs sanctioned	Sanctioned cost	Actual number of DUs for which contracts were awarded	Proportionate cost of reduced number of DUs	Date of award of work	Cost of work awarded	Cost overrun	Time overrun (months)
1	2	3	4	5	6	7	8	9	10 (Col 9 – Col 7)	11 (Col 8- Col 3)
1.	Latur MC	Infra projects (28.1.2009)	Infra project	51.67	Infra project	51.67	05.12.2009	56.83	5.16	10
2.	KBMC	KBMC-I (29.12.2008)	1634	70.3	1634	70.3	03.06.2010	74.74	4.44	17
3.	KDMC	KDMC-I (06.12.2007)	8142	322.74	8142	322.74	17.6.2008	400.46	77.72	06
4.	MBMC	MBMC (11.11.2009)	4136	279.55	4136	279.55	25.12.2010 to 24.1.2011	330.55	51	13
5.	PCMC	EWS (06.10.2007)	13250	312.26	6720	158.37	02.03.2009	382.32	223.95	16
		PCMC-II (29.09.2006)	4960	94.97	4960	94.97	11.12.2007	149.37	54.40	14
6.	NMC	Chunchate I, II, III (28.11.2006)	6,000	113.11	6000	113.11	14.05.2008	157.39	44.28	17
Total			38122		31592				460.95	

Source: CSMC minutes and information collected by audit from ULBs

Appendix XV*(Reference: Paragraph 4.2.4.2; Page No.48)***Components sanctioned under Guru-ta-Gaddi****(₹ in lakh)**

Sl. No.	Components	Grant received	Expenditure incurred	Balance as on May 2013
1	Land Acquisition	8,491.51	7,622.85	868.66
2	Housing Unit R&R Site	871.34	869.93	1.41
3	Infrastructure at R&R Site	740.39	610.01	130.38
4	Camp Sit Roads	1,010.00	917.65	92.35
5	Construction of road on both side of Lalwadi RUB	86.67	86.67	00.00
6	Up gradation & Renovation of Municipal Hospitals	701.53	701.04	0.49
7	Sanitation work on Gurudwara Darshan Marg, Gurudwara Area and Camp Site Roads	50.00	62.94	-12.94
8	Street Light in Camp Site Area and on main roads in the City	31.98	31.09	0.89
9	Fire Fighting arrangements & equipments purchase	118.00	104.67	13.33
10	Purchase of Equipments for prevention of fire and honorarium to fire employees	21.18	21.18	00.00
11	Purchase of Portable Sign Boards	9.95	9.93	0.02
12	Hire charges of vehicles for Government deputed employees	26.86	26.86	00.00
13	Purchase of equipments by Camp Officer for camp Management	6.08	5.98	0.10
14	Model Camp	32.35	32.35	00.00
Total		12,197.84	11,103.15	1,094.69

₹ 868.66 lakh was surrendered to Collector, Nanded between June 2008 and November 2009 and the unspent balance was ₹ 226.03 lakh (₹ 1094.69 lakh - ₹ 868.66 lakh)

Source: Information provided NWCMC

Appendix XVI (Reference : Paragraph 4.6 ; Page No.55)									
Statement showing details of contracts concluded for various components of swimming pool and their status									
Sl. No	Name of Work	Contract value (₹ in Lakh)	Name of contractor	Date of issue of work order	Period and stipulated date of completion	Extension granted up to	Actual date of completion	Payment made up to October 2013 (₹ in lakh)	Remarks
1.	Construction of swimming pool tank(First Phase)	76.54 (restricted to ₹ 50 lakh)	Gupta Construction	16/12/2004	Six months 15/06/2005	15/04/2006	4/04/2006	49.95	Work partially completed. Finishing work and water supply work could not be completed due to fund constraints.
2.	Cement Concrete pavement	20.87	Praveen R. Gedam	27/06/2006	Four months 26/10/2006	26/01/2007	25/01/2007	18.85	Completed
3.	Bath houses and remaining civil work	23.96	Junnaid Construction	21/09/20 07	Four months 20/01/2008	20/07/2008	14/07/2009	22.30	Completed
4.	Installation and commissioning of water filtration plant	12.27	Chlorination Engineering	19/07/2007	Two months 18/09/2007	--	--	9.00	Work stopped due to change in design.
	Total	107.10						100.10	

Source: Information provided by NIT