

Appendices

Appendix 1.1
(Reference: Paragraph 1.3, Page 2)
Year-wise break-up of outstanding Inspection Reports (IRs) as of 30 June 2013

Sl. No.	Department	Year Up to 2007-08		2008-09		2009-10		2010-11		2011-12		2012-13		Total	
		IRs	Paras	IRs	Paras	IRs	Paras	IRs	Paras	IRs	Paras	IRs	Paras	IRs	Paras
1.	Public Works	847	3450	86	425	76	513	70	407	6	54	83	589	1168	5438
2.	Water Resources	1157	3705	131	553	126	588	107	425	25	157	78	520	1624	5948
3.	Narmada Valley Development Authority	179	411	31	75	27	73	33	89	30	195	14	76	314	923
4.	Panchayat & Rural Development (MTRDA)	143	619	50	210	58	300	34	179	3	22	15	120	303	1450
5.	Forest	53	80	13	21	26	96	122	1342	57	793	92	601	363	2933
6.	Farmer Welfare & Agriculture Development	294	603	45	108	96	311	88	399	16	95	27	141	566	1657
7.	Cooperative	165	342	8	22	15	31	1	2	-	-	4	14	193	411
8.	Animal Husbandry	153	350	22	62	22	65	44	164	11	53	27	162	279	856
9.	Fisheries	43	81	2	4	17	45	6	8	12	34	25	88	105	260
10.	Rural Industries	113	327	7	21	24	75	12	56	-	-	4	15	160	494
11.	Commerce, Industries & Employment	79	130	7	11	10	37	20	76	21	88	12	44	149	386
12.	Energy	2	2	-	-	1	2	-	-	-	-	1	1	4	5
13.	Tourism	5	16	1	7	1	1	1	10	-	-	-	-	8	34
14.	Aviation	2	5	0	-	1	4	-	-	1	4	1	3	5	16
15.	Horticulture and Food Processing	61	203	5	3	27	57	21	41	14	81	35	267	163	652
	Total	3296	10324	408	1522	527	2198	559	3198	196	1580	418	2641	5404	21463

Appendix- 2.1

(Reference: Paragraph 2.1.7.4, Page 13)

Statement showing time and cost overrun due to inadequate survey and investigation

(₹ in lakh)

Sl. No.	Division	Name of Bridge work	Inadequacy in survey	Extra Cost	Delay (in month)
1.	Gwalior	Sindh bridge at Ratangarh Basai Road	Changes in width and formation level of approach	43.17	---
2.	--do--	Parvati bridge at Barsat Patodi Road	Abnormal increase in items like excavation, filling annular space, embankment etc.	33.24	01
3.	--do--	Sindh bridge on Indergarh Pichhore Road	Change in type of approach from Bituminous (BT) to Cement Concrete (CC) road	87.47	----
4.	Indore	ROB ¹ at Railway crossing no.242 at Ratlam Khandwa Section, Banganga	Length of bridge increased to 172.21 m.	91.20	29
5.	--do--	Katkalla Nalla bridge near Paliya village Baroli Paliya Hatod Road	Provision for CC Road, protection work and culvert	32.21	33
6.	--do--	Jeeti bridge at Barwah Mandleshwar Dhamnod Road	Provision of toe wall and cross drainage	31.96	29
7.	Jabalpur	Banjar bridge at Bamhani Anjania Road	Non conduction of core test of strata resultant change in HFL and type of foundation	35.44	53
8.	--do--	Budner bridge at Mohgaon Ghugri Road	Change in type of foundation	88.92	27
9.	--do--	Narmada bridge on Ramnagar Patpara Road	Change in type of foundation due to non conduction of adequate bore data	86.04	24
10.	Rewa	Johila bridge at Sohagpur Manpur Road	Change in HFL, type and level of foundation	92.48	24
11.	--do--	Kadia Nalla bridge at Barhi Singrouli Road	Change in type of foundation	33.19	53
12.	Ujjain	Rojar bridge on Jaora Piploda Road	Change in foundation level, site and type of bridge	24.17	45
13.	--do--	Kurel bridge on Similiya Ringniya Road	Reduction in Waterway resulted in extra provision of protection work and return wall.	35.98	56
14.	--do--	Newaj bridge at Bamhabe Chatukheda Road	Non provision of CC road and protection work in submersible bridge	18.12	100
15.	--do--	Ajnat bridge at Biaora Bahadurpura Road	Non provision of Hume pipe culvert, pitching work, toe wall and CC pavement	98.93	----
16.	Seoni	Dumna Nalla bridge at Palari Kabani road	Change in HFL, soffit level, formation level	6.25	08
17.	Bhopal	Sukhni bridge at Harda Chhipaner Road	Change in type of foundation and BT into CC road	90.29	36
Total				929.06	

¹ Railway Over Bridge

Appendix: 2.2
(Reference: Paragraph 2.1.8.1, Page 16, 17)
List of Selected Bridges (Completed)

Sl. No.	Name of the division	Name of Bridge	Date of work order	Stipulated date of completion	Actual date of completion	Delay (in months)
1.	Bhopal	Sukni Bridge at Harda Chhipaner road	12.1.2007	11.1.2008	31.12.2010	36
2.		Ghunsi Bridge at Bhopal Chiklod road	05.10.2006	04.08.2007	31.12.2010	40
3.		Kaithan Bridge at Pamakheda Garetha road	05.05.2007	04.03.2008	30.06.2012	51
4.		ROB Salamatpur at Bhopal Vidisha road	11.02.2009	10.08.2011	27.6.2011	0
5.		Khand Nalla at Udaipura Boras road	15.10.2006	04.05.2007	15.06.2009	25
6.		Kolar Bridge at Godi Gudaria chikaldi road	01.10.2008	01.04.2010	28.03.2011	12
7.		Chhola ROB at Bhopal	31.08.2006	28.02.2008	03.04.2013	61
8.		Tawa Bridge at Rajdoh ghat Sarani Lonia road	09.08.2010	06.2013	Damaged	-
9.	Gwalior	Parvati Bridge at Barsat Patodi road	28.07.2008	27.07.2010	29.01.2012	18
10.		Kunwari Bridge at Umri Phoof road	31.12.2004	30.06.2006	31.12.2010	54
11.		Sindh Bridge at Ratangarh Basai road	02.07.2007	01.07.2009	31.12.2011	29
12.		Mewra Bridge at Vijaypur Semai road	22.09.2009	14.04.2010	31.03.2013	35
13.		Asan Bridge at Bhonpur Sihoniya road	28.05.2008	27.05.2010	15.12.2011	19
14.		Kalpi Bridge at Gola Ka Mandir Morar road	01.10.2007	15.12.2008	30.07.2009	7
15.		Meghra Bridge at Dabra Chinore road	08.06.2006	07.02.2007	29.01.2009	23
16.		Bhaunti Bridge at Sirsod Pichhore road	15.12.2008	30.06.2009	31.03.2011	21
17.	Indore	Anas Bridge at Jhabua Meghnagar road	01.08.2001	31.07.2003	05.2008	58
18.		Malagaon Bridge at Pati Bhatki road	08.06.2005	07.05.2006	25.02.2010	45
19.		Jecti Bridge at Badwah Mandleshwar Dhammod road	14.11.2006	13.08.2007	05.01.2010	29
20.		RoB Banganga at Ratlam Khandwa road	15.10.2007	14.04.2009	30.09.2011	29
21.		Katkala Bridge at Baroli Palia Hatod road	05.07.2008	4.06.2009	31.03.2012	33
22.		Abna Bridge at Diwal Billood road	09.12.2006	07.06.2007	22.03.2012	57
23.		Chhoti Tawa Bridge at Naya Harsood (Chhanera)	15.10.2006	08.04.2008	30.06.2011	38
24.		Sukta Bridge at Sirpur Jamli Kohdad road	23.12.2006	22.05.2008	20.08.2009	15
25.		RoB at Bhandari Mill	11.08.2008	11.04.2010	31.01.2011	9
26.	Jabalpur	Hiran Bridge at Sihora-Majhgawan road	24.05.2008	23.05.2010	31.12.2010	7
27.		Banjar Bridge at Bambhani Ajniya road	22.07.2003	21.01.2005	30.09.2010	67
28.		Budner Bridge at Mohgaon Ghughri road	20.04.2004	19.10.2005	31.01.2008 15.12.2009 (Approach)	50
29.		Umar Bridge at Gadarwara Barha road	20.09.2004	19.07.2005	17.07.2008	36
30.		Sitarewa Bridge at Chiehli Chandankheda road	07.08.06 22.09.2009	06.11.06 21.05.2010	30.12.08 23.08.2010	20
31.		Narmada Bridge at Ramnagar Patpara road	02.12.2002	01.12.2004	31.03.2010	64
32.		Tamas Bridge at Rajapur Chilla road	20.02.2008	19.02.2011	30.05.2012	15
33.	Rewa	Beehar Bridge at Varanasi Nagpur road	11.09.2008	14.02.2013	31.12.2011	0
34.		Gaghar Nalla Bridge at Karahiya Anva road	21.07.2008	15.02.2010	30.04.2011	14

35.		Son Bridge at Sikarganj Chamradol road	14.11.97 19.5.08	13.11.99 18.5.09	15.08.2004 31.12.2011 (Approach)	88
36.		Narmada Bridge at Damhedi Gorakhpur road	15.02.2008	14.02.2010	30.06.2011	16
37.		Bichhiya Bridge at Dubi Gadwa Teekar road	01.01.2009	31.12.2010	28.02.2013	26
38.		Satna Bridge at Satna Jignahat road	24.02.2010	23.06.2011	31.12.2012	18
39.		Kadia Bridge at Barhi Singrouli road	02.11.2002	01.09.2003	30.06.2010	81
40.		Johila Bridge at Sohagpur Manpur road	27.04.2006	26.04.2008	25.7.2012	51
41.	Sagar	Ken Bridge at Ajaygarh Chandla road	16.03.2007	15.3.2010	31.03.2011	12
42.		Kaith Bridge at Gadhakota Rehli road	07.02.2007	06.05.2008	15.07.2011	38
43.		Gouraiya Bridge at Abhana Tendukheda road	07.03.2007	06.07.2008	14.02.2011	31
44.		Bairna Bridge at Raneh Bandhwa Mandwa road	26.05.2007	25.01.2009	14.06.2010	17
45.		Kopra Bridge at Chhirari Baleh Guda road	15.07.2006	14.03.2007	17.02.2012	59
46.		Sonar Bridge at Ghuraghat Hatta Panjhir road	11.03.2007	10.03.2009	31.12.2012	45
47.		Bairna Bridge at Simariya Koni Kishangarh road	26.05.2007	25.05.2009	31.03.2011	22
48.		Para Bridge at Chhatarpur Vikrampur road	15.07.2006	14.05.2007	27.03.2009	22
49.		Sukha Nalla Bridge at Khurai Rajvas road	22.02.2007	21.11.2007	30.03.2009	16
50.		Dhanora Bridge at Khurai Rajvas road	05.11.2007	05.07.2008	18.03.2011	32
51.		Jamni Bridge at Tikamgarh Banpura road	26.04.2007	25.10.2008	18.03.2011	29
52.	Seoni	Pench Bridge at Badagaon Ponia road	01.09.2005	31.12.2006	22.06.2009	30
53.		Nehra Bridge at Balaghat Baihar road	02.04.2007	01.06.2008	31.03.2011	33
54.		Chandan Bridge at Rampaily Mohgaon road	17.08.2007	16.02.2010	30.04.2011	14
55.		Hirri Bridge at Janam Khari Khami road	12.01.2007	11.08.2007	20.12.2010	40
56.		Wainganga Bridge at Newargaon Jamehhlindlai road	17.08.2007	16.02.2010	31.12.2011	22
57.		Son Bridge at Bhanegaon Temni road	13.12.2006	12.12.2008	28.02.2011	26
58.		Nehra Bridge at Balaghat Lamta Padrikanj road	11.06.2007	10.02.2009	15.04.2011	26
59.		Bonkatta Bridge at Katangi Bonkatta Tumsar road	04.01.2007	03.09.2007	28.02.2011	41
60.		Hirri Bridge at Tetma Malara road	10.09.2008	09.06.2009	17.3.2012	33
61.		Dumna Nalla at Bridge on Palari Kahani road	04.08.2006	03.04.2007	15.06.2010	38
62.		Kanhan Bridge at Kundam Rampet road	27.06.2007	26.12.2009	18.07.2012	31
63.		Bagh Bridge at Ghansa Navagaon road	17.02.2010	16.02.2012	31.03.2013	13
64.		Bagh Bridge at Lanji Amgaon road	21.05.2008	20.11.2010	31.03.2011	4
65.		Wainganga Bridge at Lalbarra Samnapur road	21.05.2008	20.11.2010	15.04.2013	29
66.	Ujjain	Chambal Bridge at Sitamau Choumala road	23.08.2004	22.02.2006	15.06.2009	40
67.		Chhoti Kalisindh Bridge at Mahidpur Indokh road	28.09.2006	28.11.2009	30.03.2011	16
68.		Chambal Bridge at Nagda Khachrod road	17.10.2007	31.05.2010	30.06.2011	13
69.		Chamla Bridge at Badnagar Kesur road	13.06.2003	12.04.2004	15.09.2010	77
70.		Shivna Bridge at Mandsour Pratapgarh road	08.10.2010	15.02.2013	31.03.2012	0
71.		Kshipra Bridge at Kagdi Karadia road	13.03.2008	12.09.2009	31.03.2012	30
72.		Rojar Bridge at Jaora Piploda road	01.10.2007	30.06.2008	31.03.2012	45
73.		Kurel Bridge at Ringmia Simliya road	02.01.2004	01.03.2005	18.11.2009	56
74.		Newaj Bridge at Bamalbe Chatukheda road	05.05.2003 11.02.2010	04.11.2004 10.02.2011	15.3.2013	100
75.		Kshipra Bridge at Mahidpur Gogapur road	28.09.2006	15.12.2009	15.12.2009	0

76.		Chhoti Kalisindh Bridge at Tilavad Kachnariya road	08.10.2008	15.04.2010	31.03.2011	11
77.		Chhoti kalisindh Bridge at Tarana Jawasiya road	13.10.2008	15.02.2010	30.10.2011	20
78.		Sindurkiya Nalla Bridge at Jaora Tal road	11.05.2011	11.03.2013	30.06.2012	0
79.		Chhoti Kalisindh Bridge at Jarda lalgarh road	27.05.2009	26.01.2012	31.03.2012	2
80.		Kachhal Bridge at Agar Barod road	08.10.2008	15.12.2009	31.03.2012	27
81.		Lasudia Nalla Bridge at Sitamau Jaora road	30.04.2007 20.09.2010	31.12.2007 19.05.2011	15.12.2012	60

List of Selected Bridges (Ongoing)

Sl. No.	Name of the division	Name of Bridge	Date of work order	Stipulated date of completion	As on 31.3.2013	Delay (in months)
1.	Bhopal	Sagad Bridge at Mudra Mudariya road	04.02.2009	03.04.2010	Ongoing	36
2.		Sagad Bridge at Sukha Amkheda Satpada hat road	13.05.2008	12.05.2010	Ongoing	34
3.		Tawa Bridge at Sangakheda Bandrabhan road	22.09.2005	21.03.2008	Ongoing	60
4.		Morand Bridge at Seoni Malwa Surajpur Lokar Talai road	10.11.2004	09.05.2006	Ongoing	82
5.		Hated Bridge at Itarasi Dolariya road	14.06.2005	13.10.2006	Ongoing	77
6.		Narmada Bridge at Motalsir road	09.09.2008	15.04.2010	Ongoing	35
7.	Gwalior	Khar Nalla Bridge at Pratappur Girgaon road	13.10.2006	12.06.2007	Ongoing	69
8.		Parvati Bridge at Kujanapur Soorthag road	08.02.2006 10.4.2012	07.08.2007 9.7.2013	Ongoing	67
9.		Sindh Bridge at Indergarh Pichhore road	10.10.2008	10.06.2011	Ongoing	21
10.	Indore	ROB at Mhow	06.01.2010	05.07.2011	Ongoing	20
11.	Jabalpur	Narmada Bridge at Shahpura Chargawan road	01.07.2007	30.06.2010	Ongoing	33
12.		Narmada Bridge at Mandla Poorva road	01.07.2007	31.12.2009	Ongoing	39
13.	Rewa	Belwah Bridge at Bichhi Barwadih road	18.12.2008	17.02.2010	Ongoing	37
14.		Johila Bridge at Bannoda ghat pali raipur road	26.05.2008	25.05.2010	Ongoing	34
15.		Maihar ROB at Varanasi Nagpur road	21.09.2010	21.09.2012	Ongoing	6
16.		Son Bridge at Podhi Rajghat Beohari Manpur road	04.01.2007 15.12.2011	03.07.2009 14.04.2013	15.7.2012 Ongoing (Approach)	44
17.	Sagar	Parewa Bridge at Hathini Jhapan road	24.01.2007	23.10.2007	Ongoing	65
18.		Sonar Bridge at Kisangananj Barkhedi Jerath road	02.02.2002	01.02.2004	Damaged	109
19.		Bairma Bridge at Kotaghat, Kundalpur Mahendraghat road	22.05.2007	21.11.2008	Ongoing	52
20.	Seoni	Pench Bridge at Top to Banskheda road	21.01.2008	20.07.2009	Ongoing	44
21.	Ujjain	Ajnar Bridge at Biaora Bahadurpura road	11.08.2003 17.04.2012	10.04.2005 16.04.2013	Ongoing	96
22.		Newaj Bridge at Polaikala Ranayal road	10.06.2011	09.02.2014	Ongoing	No delay

Appendix 2.3
(Reference: Paragraph 2.1.8.1 (i), Page 18)
Statement showing award of work without ensuring the availability of land

Sl. No.	Division	Name of Bridge	Work order	Status of land acquisition	Delay in starting acquisition process (in months)	Stipulated date of completion	Status of the work (per cent)	Delay (in months)	Other reasons for delay
1.	2.	3.	4.	5.	6 (5-4)	7.	8.	9 (8-7)	10.
1.		Sagad bridge at Mudra Mudaria to Berkheda Janjgir road	04.02.09	Process started on 10.01.12 after expiry of stipulated period of agreement.	35	03.04.10	Incomplete (50) -31.03.13	36	-
2.	Bhopal	Tawa bridge at Bandrabhan Sangakheda road	22.09.05	Process started on 17.02.06.	5	21.03.08	Incomplete (20) -31.03.13	60	Slow progress
3.		Morand bridge at Seoni Malwa on Surajpur Lokhartalai road	10.11.04	Process started on 22.02.12	87	09.05.06	Incomplete (5) -31.03.13	82	Slow progress
4.		Kaithan bridge at Pamakheda Garetha road	05.05.07	Process started on 9.07.	2	04.03.08	Completed 30.06.12	51	Slow progress
5.	Gwalior	Parvati bridge at Kunhanjapur Surdhaug road	08.02.06	Process started on 7.7.06	5	07.08.07	Incomplete (35) 31.03.13	67	Forest clearance
6.	Inlore	Abna bridge at Diwal Ballod road	08.12.06	Process started on 28.4.07	4	07.06.07	Completed - 22.03.12	57	Shifting in high tension line
7.		Hiran bridge on Sihora Majhgawan road	24.05.08	3.7.08 (Date of award of land)	2	23.05.10	Completed - 31.12.10	7	Shifting of electric pole
8.	Jabalpur	Narmada bridge on Shahpur Chargava road	01.07.07	Process started on 18.02.09	19	30.6.10	Approach incomplete (85) -31.03.13	33	
9.		Gaghar Nalla bridge on Karahiya Amva road	21.07.08	Process started on 9.9.10	26	15.02.10	Completed - 30.04.11	14	Diversion of road
10.		Biehiya bridge at Dubi Gadva road	1.1.09	Process started on 16.12.10	23	31.12.10	Completed - 28.02.13	26	-
11.	Rewa	Sone bridge on Sikarganj Chamradol road	14.11.97	Information to forest department was given on 31.12.02.	61	13.11.99	Balance work of approach completed on 31.12.11	88	Forest land clearance
12.		Satna bridge at Satna Jignahat road	24.2.10	Process started on 25.06.10	4	23.06.11	Completed - 31.12.12	18	

13.		Kopra bridge on Chhurari Gudra Bateh Road	15.7.06	Process started on 22.4.08	21	14.03.07	Complete 17.02.12	59	Slow progress
14.	Sagar	Bairma bridge on Raneh Bandhava Road	26.5.07	May 2008 (Date of deposit of amount for land)	12	25.01.09	Completed- 14.06.10	17	Slow progress
15.		Kaith bridge at Garhakota Rehli road	07.02.07	14.09.10 (Date of payment for land to farmers)	43	06.05.08	Completed - 15.07.11	38	Change in site & Slow progress
16.		Chamla bridge on Badnagar Kesur road	13.06.03	9.3.05 (Date of publication of Dhara-4) work not started in stipulated period.	21	12.04.04	Completed - 15.09.10	77	Change in super structure scope
17.	Ujjain	Chhoti Kalsindh bridge on Mahidpur Indokh road	28.9.06	November 2009 (First date of actual acquisition of portion of land) Land not acquired in stipulated period.	38	28.11.09	Completed - 31.03.11	16	
18.		Chambal bridge on Nagda Khaehrod Road	17.10.07	May 2011 (Date of land acquisition)	43	31.05.10	Completed - 30.06.11	13	-
19.		Pench bridge at Badagaon Ponia road	01.09.05	Process started on 01.06.06.	9	31.12.06	Completed - 22.06.09	30	Delay in lay-out & approval in drawing-design
20.	Seoni	Hirri bridge at Janamkhari Khami road	12.01.07	Process started on 01.01.08	12	11.08.07	Completed - 20.12.10	40	Slow progress & delayed approval in drawing-design

Appendix 2.4
(Reference: Paragraph 2.1.8.1 (iii), Page 18)
Bridges delayed due to delay in approval of drawings and designs

Sl. No.	Name of bridge	Name of division	Total delay in completion of work (in days)	Delay in approval of drawing/design (in days)	Escalation paid or to be paid for delays in approval of design (₹ in lakh)
1.	Kshipra bridge on Ujjain-Kagdi karadia road	Ujjain	928	765	---
2.	Gouraiya bridge on Abhana Tendukheda road	Sagar	953	443	---
3.	Ken bridge on Ajaygarh Chandla road	Sagar	381	180	22.22
4.	Kunwari bridge on Umari Phoop road	Gwalior	1640	1035	11.66
5.	Sindh bridge on Ratangarh Basai Malik road	Gwalior	545	410	20.63
6.	Narmada bridge on Ramnagar Patpara road	Jabalpur	1946	936	14.86
7.	Tamas bridge on Rajapur Chilla road	Rewa	350	60	----
8.	Sone bridge on Beohari Manpur Porirajghat road	Rewa	1107	150	----
9.	Johila bridge on Suhagpur Manpur road	Rewa	1550	540	---
10.	Sone bridge on Bhanegaon Temni road	Seoni	384	378	11.59
11.	Hirri bridge on Janamkhari to Khami road	Seoni	1226	190	---
12.	Hirri bridge on Tetma Malara road	Seoni	610	123	---
13.	Dumma Nalla bridge on palari kahani road	Seoni	1168	195	----
Total					80.96

Appendix 2.5
(Reference: Paragraph 2.1.8.1 (iv), Page 19)
Statement showing delay in action on defaulting contractors by the department

(Delay in months)

Sl. No.	Division	Name of work	Scheduled date of completion	Action taken by the Department	Total Delay up to 31.3.13	Status of work as on 31.03.2013
1.	Bhopal	Sagad bridge at Sukha Aamkheda Satpada Hat road & Sapan bridge at Kararia Shamsabad road	13.5.10	Terminated on 17.9.12	34	Incomplete
2.	--do--	Sagad bridge at Mudra Mudaria to Berkheda Jagir road	3.4.10	Terminated on 16.4.12 but revoked by SE 5.6.12	36	Incomplete
3.	--do--	Hated bridge at Itarsi Dolaria Tigaria road	13.10.06	Terminated 18.1.12	78	Incomplete
4.	Gwalior	Khar bridge at Pratappur Girgaon road	12.6.07	Show cause notice on 29.5.08	69	Incomplete
5.	Jabalpur	Umar bridge at Gadawara Barha road	19.7.05	Terminated on 24.1.07	36	Balance work completed through second contractor on 17.07.08
6.	Rewa	Belwah bridge at Bichhi Barwadih road	17.2.10	Show cause notice	37	Incomplete
7.	Sagar	Dhasan bridge at Ghubara Budera road	18.8.10	Show cause notice	31	Incomplete
8.	--do--	Bairma river at Kotaghat at Kundalpur Mahendragarh road	21.11.08	Show cause notice on 4.8.12	52	Incomplete
9.	Ujjain	Lasudia Nalla bridge at Sitamau Jaora road	30.12.07	Terminated 28.7.09	60	Completed on 15.12.12
10	Seoni	Pench bridge on Top Baskheda road	21.07.09 Work not started in stipulated period	Terminated 13.07.12 25.07.12 (Revoked by SE)	44	Incomplete

Appendix 2.6
(Reference: Paragraph 2.1.8.3 (a), Page 20)
Statement showing unequal combination of approach and carriage way

Sl. No.	Name of Bridge	Name of Division	Width of carriageway	Width of approach
1.	Johila bridge at Banauda Ghat on Pali Raipur road	Rewa	7.5 m	3.75 m
2.	Belwah bridge on Bichhi Barwadih road	Rewa	7.5 m	3.75 m
3.	Ajnar bridge on Biaora Bahadurpura road	Ujjain	7.5 m	7 m
4.	Shivna bridge on Mandsour Pratapgarh road near Pashupatinath Temple	Ujjain	7.5 m	7 m
5.	Kurel bridge on Similiya Ringniya road	Ujjain	7.5 m	7 m
6.	Kshipra bridge on Kagdi Karadia- Panbihar road	Ujjain	7.5 m	7 m
7.	Sonar bridge at Ghuraghat on Hatta Pandjhir road	Sagar	7.5 m	3.75 m
8.	Sone bridge on Bhanegaon Temni Chaundatola road	Seoni	7.5 m	7 m
9.	Kanhan bridge on Kundam Rampeth Jognikhapa road	Seoni	7.5 m	7 m

Appendix 2.7

(Reference: Paragraph 2.1.9.3, Page 26, 27)

Statement showing irregular grant of time extension though the reasons for delay was attributable to the contractor

Sl. No.	Name of work	Name of Division	Stipulated date of completion	Actual date of completion	Total delay (in days)	Delay accepted attributable to contractor	Delay attributable to contractor but penalty not imposed (in days)	Reasons attributable to contractor but penalty not imposed	Rate of Penalty (in ₹) /per day/per week	Amount of penalty (in ₹)
1.	Stone bridge at Porhi Raighat on Reohari Manpur Road	Rewa	3.7.09	15.7.12	1107	--	725	Rainy season 240 Rock in foundation 365 Unseasonal rain in upstream 120	1000/day	725000
2.	Jeeti bridge Barwah Mandleshwar Dhammod road	Inbure	13.8.07	30.6.08	321	--	203	Problem in blasting due to dense population, encroachment around the site, flood, rainy season. SE analysed and decided penalty attributable to contractor for 29 weeks but CE supercedes the order and relieved contractor without any penalty.	1/16 per cent /week of ₹ 10452000	189443
3.	Kunwari bridge on Umri Phoop road	Gwalior	30.6.06	31.12.10	1644	15	390	Rainy season 105 Standing crop in fields 45 Lacking of water in summer 240	₹ 1000/day	390000
4.	Parvati bridge on Barsat Patodi road	Gwalior	28.7.10	29.1.12	550	--	244	Work order in rainy season 60 Standing crop in field 30 No concrete work in rainy season 120 9 % extra work 34	1/16 per cent /week of ₹ 39170000	856844
5.	Ken bridge on Ajaygarh Chandla road	Sagar	15.3.10	31.3.11	381	--	168	Change in foundation on contractor's request, Dacoit affected area, release of water from dam, standing water at site etc are also causes of delay. Delay in days for each reason is not specified in speaking order.	1000/day	168000
6.	Kaith bridge on Garhakota Rehli road	Sagar	06.05.08	15.7.11	1165	118	485	Rainy season 485	1000/day	485000
7.	Chambal bridge on Sitamau Chorumala Road	Ujjain	22.2.06	15.6.09	1208	--	760	Incorrect payment schedule 384 Standing water 306 Change in type of foundation 10 Work of RDC 60	20000/day limited to 10 per cent of contract amount	2673700
8.	Wainganga bridge Nebargaon Jam Chhindlai road	Seoni	16.2.10	31.12.11	683	5	103	Work order in rainy season 59 Heavy rains 5	20000/per day	2060000

Sl. No.	Name of work	Name of Division	Stipulated date of completion	Actual date of completion	Total delay (in days)	Delay accepted attributable to contractor	Delay attributable to the contractor but penalty not imposed (in days)	Reasons attributable to contractor but penalty not imposed	Rate of Penalty (in ₹) /per day/per week	Amount of penalty (in ₹)
9.	Chandan bridge on Rampailly Mohgaon Kathurua road	Seoni	16.2.10	30.4.11	438	84	54	Change in type of foundation Rainy season	1000 per day	54000
10.	Nehra bridge on Balaghat Lamta Padriganji road	Seoni	10.2.09	15.4.11	794	16	190	Work order in rainy season Delay due to rainy season Delay due to extra depth in foundation	1/16 per cent of ₹ 21904445	369638
11.	Pench Bridge on Badgaon Ponia Road	Seoni	31.12.06	22.6.09	903	--	415	Rectification of defects	1000 day	415000
12.	Nehra bridge on Balaghat Baihar road	Seoni	1.6.08	31.3.11	1033	--	282	Delay due to diversion road	20000 day limited to 10 per cent of ₹ 14700000	1470000
13.	Dumna nalla bridge on Palari Kahani Road	Seoni	3.4.07	15.6.10	1168	46	543	Work order in rainy season Blasting prohibited (120-30) Release of water from dam Diversion road	433 30 60 20	167693
14.	Kanhan bridge on Kundam Rampeth Jognikhapa road	Seoni	26.12.09	18.7.12	935	83	325	Work order in rainy season Hard strata Difficulty in boring Unseasonal rain Strip seal	111 10 30 5 169	325000
15.	Bonkatta Nalla bridge on Katangi Bonkatta Tumsar road	Seoni	3.9.07	28.2.11	1273	79	741	Diversion road Rainy season	1/16 per cent of ₹ 7527801	451668
								Total		10800986

Appendix 2.8
(Reference: Paragraph 2.1.9.4 (i), Page 28)

Statement showing excess payment of escalation in construction of Maihar ROB Rewa due to change in agreement clause

(Amount in ₹)

Sl.No	component	Value of work done	Quarter	Component percentage	Base Index	Current Index (Average)	Payable Amount	Paid Amount	Excess Amount
1	POL	5183361	10/10 to 12/10	5	39.95	42.35	11677.159		
		7713534	01/11 to 03/11	5	39.95	42.35	17377.173		
		4012060	04/11 to 06/11	5	39.95	42.35	9038.43		
		1098537	07/11 to 09/11	5	39.95	46.23	6475.73		
		4707126	10/11 to 12/11	5	39.95	46.23	27747.889		
		9562583	01/12 to 03/12	5	39.95	46.23	56370.17		
		7625144	04/12 to 06/12	5	39.95	46.23	44949.222		
		17940359	07/12 to 09/12	5	39.95	46.23	105756.06		
						279391.84	453026	173634.17	
2	Steel	5183361	10/10 to 12/10	7	137.1	132.60	-8931.9405		
		7713534	01/11 to 03/11	7	137.1	138.30	3544.5123		
		4012060	04/11 to 06/11	7	137.1	138.56	2243.0664		
		1098537	07/11 to 09/11	7	137.1	138.10	420.66515		
		4707126	10/11 to 12/11	7	137.1	141.03	7083.8641		
		9562583	01/12 to 03/12	7	137.1	144.36	26584.818		
		7625144	04/12 to 06/12	7	137.1	149.50	36206.92		
		17940359	07/12 to 09/12	7	137.1	147.70	72821.37		
						139973.28	1772878	1632904.73	
3	Cement	5183361	10/10 to 12/10	30	151.8	149.20	-19975.403		
		7713534	01/11 to 03/11	30	151.8	150.83	-11090.111		
		4012060	04/11 to 06/11	30	151.8	154.43	15639.898		
		1098537	07/11 to 09/11	30	151.8	152.30	814.13315		
		4707126	10/11 to 12/11	30	151.8	160.13	58118.122		
		9562583	01/12 to 03/12	30	151.8	161.20	133233.62		
		7625144	04/12 to 06/12	30	151.8	165.43	154047.5		
		17940359	07/12 to 09/12	30	151.8	171.06	512151.16		
						Total	842938.92	364004	-478934.92
						'A' Total Excess Payment		1327603.98	

Statement showing excess payment of escalation in construction of Salamatpur ROB due to change in agreement clause

Sl.No	component	Value of work done	Quarter	Component percentage	Base Index	Current Index (Average)	Payable Amount	Paid Amount	Excess Amount
1	POL	9574313	04/09 to06/09	5	34.02	34.02	0.00		
		21389994	10/09 to 12/09	5	34.02	36.27	53050.58		
		35291938	01/10 to 03/10	5	34.02	37.68	142381.50		
		25491203	04/10 to 06/10	5	34.02	39.02	140493.84		
		5697720	10/10 to 12/10	5	34.02	41.65	47920.64		
		7336350	01/11 to 03/11	5	34.02	41.65	61702.33		
		3389792	04/11 to 06/11	5	34.02	41.65	28509.82		
						474058.71	994530	520471.29	
2	Steel	9574313	04/09 to06/09	7	144.50	144.50	0.00		
		21389994	10/09 to 12/09	7	144.50	142.40	-16320.05		
		35291938	01/10 to 03/10	7	144.50	140.06	-56931.15		
		25491203	04/10 to 06/10	7	144.50	134.53	-92337.25		
		5697720	10/10 to 12/10	7	144.50	132.60	-24634.26		
		7336350	01/11 to 03/11	7	144.50	138.30	-16525.83		
		3389792	04/11 to 06/11	7	144.50	138.56	-7315.62		
						-214064.16	1385030	1599094.16	
3	Cement	9574313	04/09 to06/09	30	144.20	148.16	59158.90		
		21389994	10/09 to 12/09	30	144.20	148.26	135504.57		
		35291938	01/10 to 03/10	30	144.20	149.83	310028.17		
		25491203	04/10 to 06/10	30	144.20	151.53	291549.01		
		5697720	10/10 to 12/10	30	144.20	149.20	44451.70		
		7336350	01/11 to 03/11	30	144.20	150.83	75894.59		
		3389792	04/11 to 06/11	30	144.20	154.43	54108.56		
					Total	970695.50	453065	-517630.50	
							'B' Total Excess Payment	1601934.95	

Statement showing excess payment of escalation in construction of Shivna Bridge due to change in agreement clause

Sl.No	component	Value of work done	Quarter	Component percentage	Base Index	Current Index (Average)	Payable Amount	Paid Amount	Excess Amount	
1	POL	442000	10/10 to 12/10	5	41.98	45.20	1271.36			
		20575100	01/11 to 03/11	5	41.98	45.20	59181.59			
		7589171	04/11 to 06/11	5	41.98	45.20	21829.26			
		626941	07/11 to 09/11	5	41.98	45.20	1803.31			
		8481980	10/11 to 12/11	5	41.98	45.20	24397.31			
		10656676	01/12 to 03/12	5	41.98	45.20	30652.54			
							139135.37	133087	-6048.37	
2	Steel	442000	10/10 to 12/10	7	136.00	137.53	261.06			
		20575100	01/11 to 03/11	7	136.00	148.76	101347.50			
		7589171	04/11 to 06/11	7	136.00	155.53	57215.93			
		626941	07/11 to 09/11	7	136.00	157.20	5130.77			
		8481980	10/11 to 12/11	7	136.00	161.76	84345.81			
		10656676	01/12 to 03/12	7	136.00	169.26	136824.67			
							385125.74	1703428	1318302.26	
3	Cement	442000	10/10 to 12/10	30	153.80	149.20	-2974.45			
		20575100	01/11 to 03/11	30	153.80	150.80	-90300.34			
		7589171	04/11 to 06/11	30	153.80	154.40	6661.50			
		626941	07/11 to 09/11	30	153.80	152.30	-1375.76			
		8481980	10/11 to 12/11	30	153.80	160.10	78174.30			
		10656676	01/12 to 03/12	30	153.80	161.20	115366.49			
							Total	105551.74	162535	56983.26
								'C' Total Excess Payment	1369237.15	

Total A+ B + C = ₹ 1327604 + ₹ 1601935 + ₹ 1369237 = ₹ 42,98,776

Appendix 2.9
(Reference: paragraph 2.2.6.2, Page 35)
Statement showing outstanding amount of Share capital, Loan and Interest
(₹ in lakh)

Sl. No.	Name of Units	Share Capital			Loan and Interest			Balance as on 31-03-13	
		Total No. of societies/Banks	Demand for the year 2012-13	Recovered during the year 2012-13	Balance as on 31-03-13	Total No. of societies/Banks	Demand for the year 2012-13		Recovered during the year 2012-13
1	Dy. Reg. Co-op. Societies, Hoshangabad	101	185.41	29.32	156.09	18	22.01	0.46	21.55
2	Dy. Reg. Co-op. Societies Morena	4	1013.04	4.41	1008.63	2	332.29	1.78	330.51
3	Asstt. Reg. (Audit) Co-op Societies Gwalior	3	57.83	3.70	54.13	0	0.00	0.00	0.00
4	Dy. Reg. Co-op Societies, Shivpuri	102	60.24	14.88	45.36	2	0.37	0.24	0.13
5	Dy. Reg. Co-op Societies, Guna	150	110.91	10.00	100.91	0	0.00	0.00	0.00
6	Dy. Reg. Co-op Societies, Rajgarh	5	60.56	2.99	57.57	5	4.74	3.27	1.47
7	Asstt. Reg. (Audit) Co-op Societies Vidisha	19	579.13	112.93	466.20	0	0.00	0.00	0.00
8	Asstt. Reg. Co-op. Societies, Raisen	116	208.98	37.70	171.28	1	3.23	0.57	2.66
9	Dy. Reg. Co-op. Societies Khandwa	188	165.73	21.27	144.47	11	61.50	0.51	60.99
10	Dy. Reg. Co-op Societies Burhanpur	8	152.96	45.08	107.88	5	15.70	0.38	15.32
11	Asstt. Reg. Co-operative, Indore	0	0.00	0.00	0	35	732.77	14.95	717.82
12	Dy. Reg. Co-op Societies, Indore	26	703.14	24.73	678.40	0	0.00	0.00	0.00
13	Dy. Reg. Co-op Societies Mandsaur	106	18.65	10.65	8.00	0	0.00	0.00	0.00
14	Asstt. Reg. Co-op Societies Neemuch	68	32.24	4.58	27.66	68	20.24	0.00	20.24
15	Asstt. Reg. Co-operative, Societies Ujjain	5	220.10	41.88	178.22	0	0.00	0.00	0.00
16	Dy. Reg. Co-operative, Societies Betul	94	40.13	0.40	39.73	0	17.14	0.00	17.4
17	Dy. Reg. Co-operative, Societies Shahdol	0	7.50	0.20	7.30	0	2.93	0.09	2.84
18	Dy. Reg. Co-operative, Societies	7	159.87	0.00	159.87	4	2.84	0.00	2.84

Sl. No.	Name of Units	Share Capital			Loan and Interest					
		Total No. of societies/ Banks	Demand for the year 2012-13	Recovered during the year 2012-13	Balance as on 31-03-13	Total No. of societies/ Banks	Demand for the year 2012-13	Recovered during the year 2012-13	Balance as on 31-03-13	
	Sconi									
19	Dy. Reg. Co-operative, Narsinghpur	0	86.27	2.67	83.60	0	25.13	0.00	25.13	
20	Dy. Reg. Co-operative, Societies Ratlam	0	74.12	0.00	74.12	0	0.00	0.00	0.00	
21	Dy. Reg. Co-operative, Societies Shajapur	0	97.38	65.00	32.38	0	0.00	0.00	0.00	
22	Dy. Reg. Co-operative, Chhatarpur	13	72.05	0.00	72.05	4	15.34	0.00	15.34	
23	Dy. Reg. Co-operative, Societies Dewas	6	174.82	35.19	139.63	5	348.03	5.55	342.48	
24	Jt. Reg. Co-operative, Societies Indore	0	0	0	0	0	784.76	0.00	784.76	
	Total	1021	4281.06	467.58	3813.48	160	2389.02	27.80	2361.48	
		Share Capital pending in 22 Units			Loan and interest pending in 16 Units					
		Share Capital and Loan and interest both are pending in 14 units								

Appendix 2.10
(Reference: paragraph 2.2.6.4, Page 35)
Statement showing Irregularities in cash book

Sl. No.	Name of the Units	Period	Verification of draws	Physical Verification of cash	Total checked by other official
1	J.R.C.S.Jabalpur	03/2005 to 06/2013	Not done	Not done	no
2	J.R.C.S.Sagar	09/2009 to 06/2013	done	Not done	yes
3	A.R.C.S.Neemuch	07/1999 to 06/2013	Not done	Not done	no
4	D.R.C.S.Narsinghpur	02/2008 to 06/2013	Not done	Not done	no
5	A.R.C.S.Dindori	04/2007 to 05/2013	Not done	Not done	no
6	A.R.C.S.Sagar	04/2007 to 06/2013	Not done	Not done	Yes
7	D.R.C.S.Shahdol	02/2008 to 05/2013	Not done	Not done	No
8	A.R.C.S.Bhopal	07/2006 to 06/2013	Not done	Not done	No
9	D.R.C.S.Mandsaur	01/2011 to 07/2013	Not done	Not done	No
10	D.R.C.S.Singrauli	04/2009 to 05/2013	Not done	Not done	No

Appendix 2.11
(Reference: paragraph 2.2.7.1 (i), Page 37)
Statement showing details of societies having more than one member of same family in same society

Sl. No.	Name of the Office	Name of the Society	Members Name	Fathers'/Husband Name	Remark
1.	Dy. Registrar Co-operative, Societies Indore	1. Maa Saraswati Beej Utpadak Sahakari Sangh Datoda, Mahu Indore 2. Shri Ganesh Khad Beej Utpadak Sahakari Samiti Sonvay, Indore	Sh. Ratan Singh Sh. Sitaram Sh. Genda Lal Smt.Kalawati Patel Sh. Santosh Patel Sh. Gopal Singh Smt. Ladkumwa Sh.Karan Singh Smt. Indira Bai (Repeated by two times)	S/O Sh. Sitaram Patel S/O Sh. Mukund Patel S/O Sh. Sitaram Patel W/O Sh. Hemraj Patel S/O Sh. Hemraj Patel S/O Sh. Sardar Singh W/O Sh. Sardar Singh S/O Sh. Ram Prasad W/O Sh.Karan Singh W/O Sh.Rajendra Kumawat. S/O Sh.Badrilal Kumawat W/O Sh. Badrilal Kumawat S/O Sh.Jagannath Kumawat S/O Sh.Badrilal Kumawat S/O Sh.Shrutam Kumawat W/O Sh.Gyanchandra S/O Sh.Karan Singh W/O Sh.Karan Singh W/O Sh. Rustam Singh W/O Sh. Satyendra Singh W/O Sh. Ranveer Singh W/O Sh. Pancham Singh W/O Sh. Jitendra Singh W/O Sh. Mahendra Singh W/O Sh. Bhikha Ram W/O Sh. Rakesh	All three members registered in same society Both members Registered in same society Both members Registered in same society Both members Registered in same society More than one member registered from one Family More than one member registered from one Family They are in relation of Saas-Bahu They are related with Father-Son and brother
2.	Asstt. Reg. Co-operative, Societies Ujjain	3. Mahalakshmi Sahakari Sakh Sanstha, Khacharond	Smt.Mamta Kumawat Sh.Rajendra Kumawat Smt.Droupati Devi Sh.Badrilal Kumawat Sh.Devendra Sh. Gyanchandra Smt. Sonu	S/O Sh.Karan Singh W/O Sh.Karan Singh	More than one member registered from one Family
3.	Dy. Reg. Co- operative, Societies Morena	4. Mahila Grith Udyog Sahakari Sansthan higonra khurd morena 5. Jai Bajrang Kray Vikray Sahakari Santha Hingonakhurd,Morena	Sh.Pratap Singh Smt.Sushma Bai Smt. Rnki Smt. Neelam Smt. Pushpa Devi Smt. Shankutala Smt. Suman Smt. Renu Smt.Ramrati Smt. Saroj Sh. Pancham Singh Sh.Mahendra Singh Sh. kamal singh Sh. Mukesh Singh	S/O Sh.Karan Singh W/O Sh.Karan Singh W/O Sh. Satyendra Singh W/O Sh. Ranveer Singh W/O Sh. Pancham Singh W/O Sh. Jitendra Singh W/O Sh. Mahendra Singh W/O Sh. Bhikha Ram W/O Sh. Rakesh S/O Sh. Mohan Singh S/O Sh. Pancham Singh S/O Sh. Ram Singh S/O Sh. Kamal Singh	They are in relation of Saas-Bahu They are related with Father-Son and brother

Sl. No.	Name of the Office	Name of the Society	Members Name	Fathers/Husband Name	Remark
4.	Dy. Reg. Co-operative, Societies Alirajpur	6. Alirajpur Sakh Sahakari Samstha Alirajpur	Sh. Rustam Singh	S/O Sh. Ranveer Singh	
			Sh. Satyendra Singh	S/O Sh. Ranveer Singh	
5.	Dy. Reg. Co-operative, Societies Chhatarpur	7. Beez U'padak Sahakari Samiti Sunwaha Chhatarpur	Smt. Malti	W/O Sh. Vishwanath Singh	From one family
			Sh. Rakesh	S/O Sh. Vishwanath Singh	
			Sh. Jagesh	S/O Sh. Vishwanath Singh	
			Sh. Bhikha Ram	S/O Sh. Oehha Ram	
			Sh. Rakesh	S/O Sh. Bhikha Ram	
			Sh. Aditya Kothari	S/O Late Mahendra Kothari	
			Smt. Meena Kothari	W/O Late Mahendra Kothari	
			Sh. Mahesh Somani	S/O Sh. Punamchand Somani	
			Smt. Sikha Somani	W/O Sh. Mahesh Somani	
			Sh. Virendra Singh Bhatiya	S/O Vikram Singh Bhatiya	
Sh. Dharmendra Singh Bhatiya	S/O Vikram Singh Bhatiya				
Smt. Urmila Bhatiya	W/O Vikram Singh Bhatiya				
Sh. Yogesh Thapadiya	S/O Sh. Prakashchandra Thapadiya	- do -			
Smt. Suman Thapadiya	W/O Sh. Prakashchandra Thapadiya				
5.	Dy. Reg. Co-operative, Societies Chhatarpur	7. Beez U'padak Sahakari Samiti Sunwaha Chhatarpur	Sh. Mahendra	S/O Sh. Babulal	They are in relation with Husband-Wife
			Smt. Vidyabai	W/O Sh. Mahendra	
			Sh. Dwarka Prasad	S/O Sh. Mewa Ram	
			Smt. Laddunwar	W/O Sh. Dwarka Prasad	
			Sh. Rameshwar Prasad	S/O Sh. Mewa Ram	
			Smt. Suman	W/O Sh. Rameshwar Prasad	
			Sh. Devi Singh	S/O Sh. Jangali	
Smt. Kusumani	W/O Sh. Devi Singh				

Appendix 2.12
(Reference: paragraph 2.2.7.3, Page 39)
Statement showing non-receipt of Compliance Report of Audit Notes issued

Sl. No.	Name of Units	No of Audited societies				Audit Notes issued				No. of compliance Reports received				No. of compliance Reports pending			
		2010-11	2011-12	2012-13	Total	2010-11	2011-12	2012-13	Total	2010-11	2011-12	2012-13	Total	2010-11	2011-12	2012-13	Total
1	Asstt. Reg. Co-operative, Societies Neermuch	307	303	334	944	205	197	239	641	74	125	100	299	131	72	139	342
2	Asstt. Reg. Co-op. Societies Audit, Indore	2003	1739	2005	5747	1412	1470	1720	4602	123	118	120	361	1289	1352	1600	4241
3	Dy. Reg. Co-operative, Societies Khandwa	558	528	473	1559	408	417	473	1298	0	0	0	0	408	417	473	1298
4	Dy. Reg. Co-operative, Societies Morena	880	902	911	2693	880	902	911	2693	0	0	0	0	880	902	911	2693
5	Asstt. Reg. (Audit) Co-op, Societies Gwalior	862	923	1031	2816	862	923	1031	2816	0	0	0	0	862	923	1031	2816
6	Dy. Reg. Co-operative, Societies Shivpuri	524	438	440	1402	524	438	440	1402	0	0	0	0	524	438	440	1402

Audit Report Economic (Non-PsUs) Sector for the year ended 31 March 2013

7	Dy. Reg. Co-operative, Societies Guna	365	332	324	1021	328	322	314	964	0	0	0	0	0	0	328	322	314	964
8	Dy. Reg. Co-operative, Societies Ashok Nagar	250	254	246	750	250	254	246	750	0	0	0	0	0	0	250	254	246	750
9	Dy. Reg. Co-operative, Societies Rajgarh	922	814	913	2649	922	814	913	2649	0	0	0	0	0	0	922	814	913	2649
10	Asstt. Reg. (Audit) Co-op, Societies Vidisha	571	526	0	1097	571	526	0	1097	0	0	0	0	0	0	571	526	0	1097
11	Asstt. Reg. Co-operative, Societies Raisen	698	546	509	1753	675	544	509	1728	0	0	0	0	0	0	675	544	509	1728
12	Dy. Reg. Co-operative, Societies Alirajpur	205	96	89	390	205	96	89	390	0	0	0	0	0	0	205	96	89	390
13	Dy. Reg. Co-operative, Societies Burhanpur	512	546	524	1582	512	546	524	1582	0	0	0	0	0	0	512	546	524	1582
Total		8657	7947	7799	24403	7754	7449	7409	22612	197	243	220	660	7557	7206	7189	21952		

Appendix 2.13
(Reference: paragraph 2.2.7.6, Page 40)

Statement showing details of banks showing shortfall in recovery but action against Board of Directors of Bank was not taken

Sl No.	Name of Bank	2009-10			2010-11			2011-12			Recovery In %		
		Demand of the Year	Recovery during the year	Short recovery	Recovery In %	Demand of the Year	Recovery during the year	Short recovery	Demand of the Year	Recovery during the year		Short recovery	
1	District Co-operative Central Bank, Hoshangabad	39287.82	19412.95	19874.87	49.41	44053.98	20195.49	23858.49	45.84	51854.44	22638.20	29216.24	43.66
2	Land Development Bank, Morena	2675.28	776.34	1898.94	29.00	2810.67	804.09	2006.58	29.00	2867.20	631.98	2235.22	22.00
3	-do- Shivpuri	2275.44	582.51	1692.93	26.00	2412.31	402.07	2010.24	17.00	2418.14	442.03	1976.11	18.00
4	-do- Rajgarh	2258.10	744.01	1513.09	33.00	2134.75	205.04	1929.71	10.00	2369.77	159.21	2210.56	7.00
5	-do- Raisen	1937.60	509.07	1428.53	26.00	2007.26	358.14	1649.12	18.00	2448.30	265.91	2182.39	11.00
6	-do- Indore	4360.66	2333.42	2027.24	54.00	4014.12	2073.99	1940.13	52.00	3894.44	1667.47	2226.97	43.00
7	Manusaur	2023.82	698.54	1325.28	35.00	1643.78	599.03	1044.75	36.00	1583.46	345.77	1237.69	22.00
8	-do- Dewas	2326.06	761.27	1564.79	33.00	2264.42	794.23	1470.19	35.00	1954.00	275.00	1679.00	14.00

Appendix 2.14
(Reference: paragraph 2.2.8.1, Page 41)
Statement showing funding pattern for ICDP schemes

(Figures in per cent)

Sl. No.	Activity	From NCDC to State Government under the category of under-developed State ²		From State Government to cooperatives		
		Loan	Subsidy	Loan	Share capital	Subsidy
1	Civil works, plant and machinery, infrastructure facilities	80	20	50	30	20
2	Margin money to societies-	80	20	-	80	20
3	Share capital to the DCCBs/PIA	100	-	-	100	-
4	Manpower development & training and incentives	-	50	-	-	100
5	Managerial assistance to PIA and monitoring cell etc.	-	50	-	-	100

Appendix 2.15
(Reference: paragraph 2.2.8.1, Page 41)
Statement showing details of receipts and expenditure under the ICDP

(₹ in lakh)

Sl. No.	Project	Sanction		Total Receipt	Expenditure	Balance/Saving
		Date	Amount			
1.	Khandwa	28.11.07	1311.21	1276.61	1183.22	93.39
2.	Burhanpur	28.11.07	747.20	747.20	703.47	43.73
3.	Tikamgarh	31.08.07	1130.74	1129.74	950.84	178.90
4.	Shahdol	28.11.07	683.42	683.42	558.35	125.07
5.	Umariya	28.11.07	406.62	406.12	312.38	93.74
6.	Anuppur	28.11.07	305.67	305.17	233.36	71.81
7.	Jhabua	20.03.07	1235.50	1178.74	1178.51	0.23
8.	Vidisha	28.03.07	1675.20	1245.16	1229.00	16.16
9.	Sagar	21.03.07	1600.82	1598.82	1460.04	138.78
10.	Mandsaur	23.03.07	1867.67	1867.67	1867.67	0
11.	Neemuch	17.04.07	918.05	918.05	918.05	0
12.	Ujjain	20.03.07	1675.20	1674.42	1674.42	0
13.	Betul	31.08.07	1660.25	1636.21	1610.04	26.17
14.	Indore	31.08.07	1906.78	1905.78	1898.79	6.99
15.	Sehore	22.03.07	1727.40	1727.32	1727.32	0
	TOTAL		18851.73	18300.43	17505.46	794.97

² Madhya Pradesh is an under-developed State.

Appendix 2.16
(Reference: paragraph 2.2.8.1 (ii), Page 42)
Statement showing outstanding share capital under ICDP

(₹ in lakh)

Sl. No.	Name of District	Date of Payment	Share Capital paid	Amount due for recovery as on 31 March 2013	Amount Recovered	Amount Outstanding
1	Narsinghpur	03/01/1998	81.58	81.58	66.29	15.29
		01/01/2001	74.08	59.27	38.13	21.13
		01/01/2000	46.00	36.80	26.55	10.25
2	Jabalpur	03/01/2001	234.15	163.91	140.49	23.42
		11/01/2004	83.33	52.08	41.67	10.42
		01/01/2005	116.67	72.92	45.57	27.35
3	Raisen	03/01/1997	172.13	172.13	154.16	17.97
		03/01/1998	34.05	30.65	27.24	3.41
		10/01/2000	74.08	51.86	44.45	7.41
4	Bhind	05/01/2002	156.01	78.01	48.86	29.15
		03/01/2003	140.00	56.00	56.00	0.00
		12/01/2004	100.00	62.50	50.00	12.50
		03/01/2006	200.00	175.00	129.61	45.39
5	Rajgarh	03/01/2003	171.22	68.49	55.49	13.00
		03/01/2005	200.00	125.00	75.00	50.00
		03/01/2006	200.00	150.00	115.25	34.75
		03/01/2007	100.00	75.00	16.12	58.88
6	Guna	03/01/1998	84.07	84.07	67.26	16.81
		03/01/1999	149.27	134.34	109.72	24.63
		03/01/2001	85.00	56.25	42.50	13.75
		06/01/2002	58.00	29.00	17.70	11.30
7	Sidhi	03/01/2003	5.00	2.50	1.50	1.00
		03/01/1998	56.74	56.74	38.75	17.99
		05/01/2002	114.00	57.00	34.91	22.09
		03/01/1999	177.83	160.04	88.91	71.13
8	Chhindwara	03/01/2000	250.80	200.64	125.40	75.24
		03/01/2003	100.00	50.00	37.50	12.50
		03/01/2004	126.00	50.40	20.40	30.00
		11/01/2004	16.60	10.38	4.15	6.23
		05/01/2002	219.01	109.50	86.14	23.37
9	Ratlam	03/01/2003	140.00	56.00	42.00	14.00
		03/01/2004	100.00	40.00	30.00	10.00
		02/01/2005	153.00	95.63	77.97	17.66
		03/01/2006	65.00	56.88	48.75	8.13
		03/01/2007	114.80	86.10	57.09	29.01
10	Vidisha	03/01/2007	198.02	148.51	123.76	24.75
11	Ujjain	03/01/2007	147.90	110.93	92.44	18.49
12	Jhabua	03/01/2007	217.45	163.09	136.91	26.18
13	Sehore	03/01/2007	217.45	163.09	136.91	26.18
TOTAL			4761.79	3269.20	2414.64	854.58

Appendix 2.17
(Reference: paragraph 2.2.8.1 (ii), Page 42)
Statement showing details of outstanding recovery of Loan and Interest under ICDP as on 31 March 2013

(₹ in lakh)

Sl. No.	Name of District	Loan		Amount due			Amount received			Balance			Total
		Amount	Year	Principal	Interest	Penal Interest	Principal	Interest	Penal Interest	Principal	Interest	Penal Interest	
1	ICDP Narsinghpur	147.65	1995-96	147.65	148.36	1.98	147.65	84.97	0.00	0.00	63.39	1.98	65.37
2	ICDP Narsinghpur	29.04	1997-98	29.04	28.79	1.60	29.04	0.00	0.00	28.79	1.60	0.00	30.38
3	ICDP Jabalpur	20.83	2004-05	18.23	10.31	0.28	9.65	7.18	0.00	8.58	3.14	0.28	11.99
4	ICDP Jabalpur	29.17	2004-05	25.52	14.39	0.40	9.61	12.05	0.00	15.91	2.34	0.40	18.64
5	ICDP Sidhi	50.00	2000-01	45.00	43.88	7.18	11.91	17.06	0.00	33.09	26.81	7.18	67.09
6	ICDP Sidhi	12.90	2002-03	12.90	8.16	1.16	12.90	0.00	1.16	0.00	8.16	0.00	8.16
7	ICDP Chhindwara	13.28	1999-2000	13.80	144.39	0.46	113.43	126.47	0.00	19.37	17.91	0.46	37.75
8	ICDP Chhindwara	70.83	1998-99	70.83	72.51	0.77	68.15	61.35	0.00	2.67	11.15	0.77	14.60
9	ICDP Raisen	17.63	1999-2000	17.63	19.19	2.91	2.00	3.56	0.00	15.63	15.64	2.91	34.17
10	ICDP Blind	100.00	2005-06	75.00	43.56	0.00	38.91	36.32	0.00	36.09	7.25	0.00	43.33
11	ICDP Guna	34.11	1997-98	34.11	34.41	6.65	30.70	30.03	0.00	3.41	4.38	6.65	14.44
12	ICDP Rajgarh	50.00	2004-05	43.75	24.75	0.00	37.50	23.06	0.00	6.25	1.69	0.00	7.94
13	ICDP Rajgarh	30.00	2006-07	22.50	12.80	1.46	15.00	10.96	0.00	7.50	1.84	1.46	10.80
	TOTAL	605.44		555.96	605.50	24.85	526.45	413.01	1.16	148.50	192.49	23.69	364.66

Appendix 2.18
(Reference: paragraph 2.3.7.2, Page 51)
Statement showing shortfall in manpower and remarks of Department

Sl. No.	Designation	Position as on	Sanctioned strength	Working Strength	Shortfall	Remark
1	Range Officer	30.06.2013	1194	812	382	Proposal has been sent for recruitment of 100 ROs. while Departmental Promotion Committee was held for promotion of 95 Deputy Ranger.
2	Deputy Ranger	30.06.2013	1258	1073	185	Action has been taken from time to time for promotion according to availability.
3	Forester	30.06.2013	4189	3739	450	Action has been taken from time to time for promotion according to availability.
4	Forest Guard	30.06.2013	14009	11156	2853	Selection list for appointment of 2017 Forest Guards has been issued.
Total			20650	16780	3870	

(Source: information provided by APCCF/Administration-II)

Appendix 2.19
(Reference: paragraph 2.3.7.3, Page 52)
Details of Target and Achievement under the scheme of Intensification of Forest Management for the years 2010-11 to 2012-13

Component	Item	2010-11		2011-12		2012-13	
		Target	Achievement	Target	Achievement	Target	Achievement
Forest Fire Control and Management	Fire line maintenance	50000 Km.	Achieved	5780 Km.	Achieved	8000 Km.	Achieved
	Training and awareness	5 LS	Achieved	25 LS			
	Fire watchers			925 mandays x months		100000 man days	Achieved
Working Plan preparation / Survey and Demarcation	Procurement of Satellite imageries						
	Development and management of computer based forest network (2009-10)						
	Development upgradation and deployment of PDA based various application (2009-10)			75 No.	Achieved		
	Purchase of materials	24 No.	Achieved				
	Survey and Enumeration	35 No.	Achieved				
	GIS workstations, including software	No target					
	Development of High speed communication networks wireless cell phones etc.	50 No.	Achieved				
	Contingency (Strengthening of forest chowkies)	No target		No target		No target	
	Demarcation (Pillars)					10000 No.	Achieved
	Connectivity at forest stations					20 No.	Achieved
Strengthening of Infrastructure for forest protection	Construction of forest stations and line quarters.	4 No.	Achieved	73 No.	Achieved	42 No.	Achieved
	Construction of Barriers / Check posts	31 No.	Achieved				
	Vehicles of Forest stations	9 No.	Achieved	10 No.	Achieved		
	Training of Staff in handling and maintenance of guns in all sensitive divisions	308 No.	Achieved				
	Construction of Court Room	7 No.	Achieved				

Appendix 2.20
(Reference: paragraph 2.3.8.2, Page 53)
Shortfall in beat inspections

Sl. No.	Division	Division Forest Officer		Sub division officer		Range officer		Range Assistant					
		Target	Actual Inspection	Short fall (in per cent)	Target	Actual Inspection	Short fall (in per cent)	Target	Actual Inspection	Short fall (in per cent)			
1	Betul West	No shortfall		No shortfall		840	751	11	No shortfall				
2	Guna	No shortfall		474	286	1,556	1,214	22	4,062	3,564	12		
3	Khandwa	No shortfall		840	640	1,584	1,378	13	7,800	6,697	14		
4	Sheopur	120	71	41	540	465	14	1,152	1,125	2	3,360	3,225	4
5	Singrauli	120	84	30	540	478	11	1,296	1,137	12	4,320	3,931	9
6	Umaria	No shortfall		No shortfall		1,152	1,059	8	4,800	3,729	22		

Appendix 2.21
(Reference: paragraph 2.3.9, Page 53)
Offence wise registered cases in audited Divisions

Sl. No.	Division	Illicit felling		Encroachment		Illegal Mining		Illegal grazing Cases	Poaching Cases	Illegal transportation Cases	Saw mill Cases	Forest Fire		Total cases
		Cases	No. of trees	Cases	Area (ha)	Cases	Area (ha)					Cases	Area (ha)	
1	Balaghat North	6977	43682	20	5.890	30	28.130	1	87	42	0	386	1489.714	7543
2	Balaghat South	7911	41369	31	20.190	129	22.316	11	162	349	12	351	1823.750	8956
3	Betul South	7616	32128	5	11.622	10	4.710	41	10	45	2	419	2011.280	8148
4	Betul West	4931	13641	157	124.892	34	5.357	33	5	31	0	465	4471.650	5656
5	Chhindwara West	8793	56491	2	0	45	675.293	177	40	44	2	373	2231.380	9476
6	Damoh	8171	51272	284	727.658	236	22.745	34	17	134	7	514	1693.200	9397
7	Dewas	9979	48471	162	1409.311	24	0.412	85	40	137	44	689	3757.365	11160
8	Guna	2356	36723	1212	3067.075	116	18.688	34	24	887	25	318	2786.072	4972
9	Hoshangabad	8001	39371	7	13.548	19	6.825	61	84	861	20	499	3926.893	9552
10	Indore	4445	23552	228	213.698	24	881.638	55	38	132	36	148	1247.200	5106
11	Khandwa	10500	56416	10	6.000	33	4.000	133	21	229	2	481	2149.180	11409
12	Mandla East	5283	36477	15	33.929	9	1.177	46	42	17	0	350	2365.700	5762
13	Mandla West	6257	26980	69	17.155	6	0.016	43	22	47	2	281	1262.260	6727
14	Raisen	10370	61125	112	110.853	154	24.660	18	57	62	8	281	1005.350	11062
15	Sagar South	7652	24803	88	157.506	41	32.206	147	26	108	6	375	2037.004	8443
16	Sehore	6762	39321	424	3618.875	31	12.564	40	95	274	32	703	6612.632	8361
17	South Seoni	7454	50044	1	0	10	3.837	80	108	102	2	283	2723.150	8040
18	Sheopur	5388	44205	225	701.702	131	35.145	295	37	62	14	477	3748.750	6629
19	Singrauli	2812	21956	278	280.817	82	418.495	112	38	168	0	223	998.020	3713
20	Tikamgarh	1545	2014	48	19.477	73	22.06	9	27	117	31	18	57.600	1868
21	Umaria	6152	42051	112	170.020	27	4.003	13	137	34	2	402	1767.700	6879
Grand Total		139355	792092	3490	10710.218	1264	2224.277	1468	1117	3882	247	8036	50165.850	158859

Appendix 2.22
(Reference: paragraph 2.3.10, Page 56)
Year wise details of Investigation cases and Compound cases

Investigation Cases

Sl. No.	Year	Opening Balance	Registered cases	Total	Investigated cases	Pending cases	Time barred
1	2009	28188	71040	99228	69129	30099	1303
2	2010	31532	63797	95329	65229	30100	770
3	2011	32028	66514	98542	64801	33741	624
4	2012	35901	65224	101125	68703	32422	770
Total		127649	266575	394224	267862	126362	3467

Compound Cases

Sl. No.	Year	Opening Balance	Investigated cases	Total	Compound cases	Pending cases	Time barred
1	2009	15931	69129	85060	55479	29581	180
2	2010	17336	65229	82565	54036	28529	469
3	2011	17368	64801	82169	51616	30553	267
4	2012	20347	68703	89050	53330	35720	768
Total		70982	267862	338844	214461	124383	1684

Appendix 2.23
(Reference: paragraph 2.3.10.4, Page 58)
Circle-wise position of different system of girth classes for Vriksha Mulya

Sl. No.	Circle	Division	Girth Classes for teak trees	Number of Girth Classes
1	Bhopal	Sehore and Raisen	21-30, 31-45, 46-60, 61-90, 91-120, 121-150, 151-180, Over 180	8
2	Jabalpur	Mandla East and Mandla West	21-30, 31-45, 46-60, 61-90, 91-120, 121-150, 151-180, Over 180	8
3	Shivpuri	Guna	21-30, 31-45, 46-60, 61-90, 91-120, 121-150, 151-180	7
4	Indore	Indore	31-40, 41-50, 51-60, 61-90, 91-120, 121-150, 151-180	7
5	Khandwa	Khandwa	21-30, 31-40, 41-50, 51-60, 61-75, 76-90, 91-105, 106-120, 121-150, 151-180, Over 180	11
6	Sagar	Sagar South and Damoh	Upto 20, 21-30, 31-40, 41-50, 51-60, 61-75, 76-90, 91-105, 106-120, 121-135, 136-150, 151-180	12
7	Gwalior	Sheopur	21-30, 31-40, 41-50, 51-60, 61-90, 91-120, Over 120	7
8	Shahdol	Umariya	21-30, 31-45, 46-60, 61-90, 91-120, 121-150, 151-180, Over 180	8
9	Chhatarpur	Tikamgarh	31-45, 46-60, 61-75, 76-90, 91-100, 101-120	6
10	Betul	Betul West and Betul South	21-30, 31-40, 41-50, 51-60, 61-90, 91-120, 121-150, 151-180	8
11	Seoni	Seoni South	21-30, 31-45, 46-60, 61-90, 91-120, 121-150, 151-180, Over 180	8
12	Ujjain	Dewas	21-30, 31-40, 41-50, 51-60, 61-75, 76-90, 91-105, 106-120, 121-150, Over 150	10
13	Chhindwara	Chhindwar West	21-30, 31-40, 41-50, 51-60, 61-75, 76-90, 91-105, 106-120, 121-135, 136-150, 151-180, Over 180	12
14	Rewa	Singrauli	21-30, 31-45, 46-60, 61-90, 91-100, 101-120, 121-150, 151-180, Over 180	9
15	Balaghat	Balaghat South and Balaghat North	21-30, 31-40, 41-50, 51-60, 61-90, 91-120, 121-150, 151-180, Over 180	9
16	Hoshangabad	Hoshangabad	21-30, 31-45, 46-60, 61-90, 91-120, 121-150, 151-180, Over 180	8

Appendix 2.24
(Reference: paragraph 2.3.11.1 (iv), Page 62)
Short fall of confiscated material in re-measurement

Sl. No.	Division	Transported quantity (c mt.)	Re-measured at depot (c mt.)	Short fall	Average rate of POR sale	Unreported loss (Amount in ₹)
1	Balaghat North	368.5	269.697	98.806	12530	1238039
2	Balaghat South	55.052	44.842	10.210	10000	102100
3	Damoh	51.169	35.540	15.629	10695	167184
4	Dewas	91.410	73.760	17.650	22631	399437
5	Hoshangabad	212.860	172.287	40.573	30719	1246423
6	Khandwa (P)	890.303	826.393	63.910	25562	1633664
7	Mandla East	11.755	8.390	3.365	24696	83102
8	Raisen	507.582	410.185	97.397	18000	1753146
9	Sagar South	70.950	62.590	8.360	27390	228953
10	Sehore	589.505	426.712	162.793	22356	3639400
11	Umaria	151.812	137.374	14.438	30700	443247
	Total	3000.898	2467.770	533.131	235279	10934695

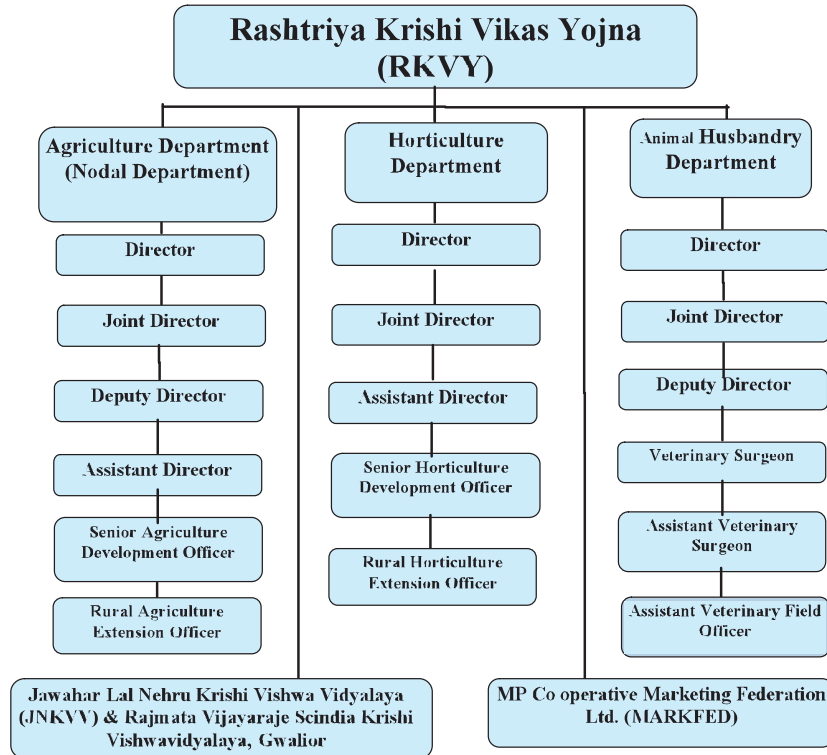
Appendix 2.25
(Reference: paragraph 2.3.11.5, Page 64)
Non disposal of Vehicle confiscated in forest offence

Sl. No.	Name of Division	No. of vehicles	Position of Pendency from the period between years				No. of vehicles for which upset price had not been fixed
			2008-2012	2003-2007	1998-2002	1993-1998	
1	Balaghat South	04	04				4
2	Betul South	24	24				0
3	Betul West	03	02		01		0
4	Chhindwara West	10	05		03	02	10
5	Damoh	06	06				6
6	Dewas	37	34	03			0
7	Guna	02	02				0
8	Hoshangabad	11	11				11
9	Khandwa	112	98	14			0
10	Mandla West	05	04	01			0
11	Raisen	11	11				0
12	Sagar South	22	22				22
13	Sehore	161	155	06			113
14	Seoni South	21	19	02			0
15	Sheopur	10	08	02			3
16	Singrauli	03	01	02			0
17	Tikamgarh	09	09				0
18	Umaria	05	03	01	01		2
	Total	456	418	31	05	02	171

Appendix 2.26

(Reference: paragraph 2.4.2, Page 70)

Organogram of RKVY



Source: Web sites and annual reports of the departments

Appendix 2.27
(Reference: paragraph 2.4.5, Page 71)
Statement showing selection methodology and the projects & districts selected for test check under Performance Audit

Methodology of selection:

For selecting sample sectors for audit, the sector wise expenditure during 2007-08 to 2011-12 were collated and arranged as per following criteria:

Category of Sector (expenditure wise)	Percentage of sample sector
A (Expenditure more than ₹ 100 crore)	100
B (Expenditure between ₹ 50 and 100 crore)	60
C (Expenditure less than ₹ 50 crore)	30

Based on the above criteria, sectors were selected by using Simple Random Sampling technique in respect of categories B and C sectors. Under each of the selected sectors, 10 *per cent* of the projects, subject to a minimum of two projects were selected using Probability Proportional to Size with Replacement (PPSWR) method. Accordingly, out of 297 projects completed and 81 ongoing projects, 24 projects (including one incomplete) under 11 sectors were selected for test check.

During the field audit, the records of four³ Directorates, two⁴ Head offices and 38 district level⁵ implementing units which were selected using simple random sampling technique, were test checked between June and October 2013.

Details of projects selected and test checked offices:

Sl. No.	Name of selected sector	Name of selected projects	Year/Project ID	Districts/Offices Selected
1	Agriculture Mechanisation	Establishing Custom Hiring Centres In Pulse And Oil Seed Growing Villages In Rain fed Areas-procurement of implements.	2010-11	Asst. Engineer (Agriculture Engineering), Vidisha and two Offices of AE (Satna and Indore) i.e controlling office of - Satna, Umaria, Panna, Indore, Dhar, Jhabua, Khargone, Badwani, Khandwa, Burhanpur, Alirajpur, Ujjain, Mandsaur, Ratlam, Dewas, Shajapur, Neemuch
2		Providing Spiral Grader and Seed Treating drum to farmers	2011-12	
3	Agriculture Research	Monitoring of agro economic system	2010-11	Jabalpur (JNKV University)
4		Agriculture Research projects	2010-11	
5	ANHB	Cold-Chain	2010-11	Badwani, Mandsaur, Gwalior, Khargone, Shajapur, Katni, Chhindwara and Bhopal
6		Cattle breeding farm	2008-09	

³ Directorate of Agriculture Development and Farmer Welfare, Directorate of Agriculture Engineering, Directorate of Horticulture and Directorate of Animal Husbandry.

⁴ Jawaharlal Nehru Krishi Vishwavidyalaya (JNKVV), Jabalpur and MP State Co-operative Marketing Federation Limited (MARKFED), Bhopal.

⁵ Agriculture- 9, Horticulture-9, Engineering-3, ASCO-9 and Animal Husbandry-8; Total 38.

Sl. No.	Name of selected sector	Name of selected projects	Year/ Project ID	Districts/Offices Selected
7		Strengthening of Hospitals	2009-10	
8	Crop	Field Demonstration and Farm field School	2010-11	Vidisha, Umaria, Dhar, Dewas, Panna, Khargone, Katni, Chhindwara and Bhopal
9		Organic farming	2011-12	
10	Agriculture Extension	Strengthening of block offices as KGK	2011-12	MARKFED, Bhopal
11		Strengthening of State Institute of Agriculture Extension and Training (SIAET)	2007-08	SIAET, Bhopal and MARKFED, Bhopal
12	Irrigation	Construction of Tubewell for general category farmers	2010—11	Vidisha, Umaria, Dhar, Dewas, Panna, Khargone, Katni, Chhindwara and Bhopal
13		Construction of MIT	2010-11	
14	Horticulture	Micro Irrigation	2011-12	Umaria, Hoshangabad, Panna, Raisen, Khargone, Ashok nagar, Katni, Chhindwara and Bhopal
15		Storage facilities, onion storage	2010-11	
16		Vermi Composting	2010-11	
17	Others	Rainfed Area Development Programme	2011-12	Vidisha, Umaria, Dhar, Hoshangabad, Khargone, Sehore-2, Katni, Chhindwara and Bhopal
18		Pulse Villages Development	2011-12	
19	Natural Resource Management	Ground water Recharge	2010-11	Vidisha, Umaria, Dhar, Hoshangabad, Khargone, Sehore-2, Katni, Chhindwara and Bhopal
20		Project on rain water conservation	2007-08	
21	Integrated Pest Management	Seed Treatment	2010-11	Vidisha, Umaria, Dhar, Dewas, Panna, Khargone, Katni, Chhindwara and Bhopal
22		Crop Protection	2010-11	
23	Seed	Seed Production Programme	2010-11	Vidisha, Umaria, Dhar, Dewas, Panna, Khargone, Katni, Chhindwara and Bhopal
24		Seed distribution	2008-09	

Appendix 2.28

(Reference: paragraph 2.4.6.3, Page 73)

(A) Statement showing existing projects having *ex-post-facto* approval

(₹ in lakh)

Sl. No.	Agriculture Department	Project Year	Sanctioned Cost	Revised Cost	Increase
1	Seed Production Programme (Certified)	2008-09	400	2945.01	2545.01
2	Seed Distribution Programme (Certified)	2008-09	1000	2154.49	1154.49
3	Strengthening of Extension infrastructure (State Level Monitoring Cell)	2008-09	50	336.75	286.75
4	Micro Minor Irrigation Tank	2010-11	5000	8659.64	3659.64
5	Providing Spiral Grader and Seed Treatment Drum to 1000 Balram Villages	2011-12	90.9	399.84	308.94
6	Capacity Building of Block Level (Krishi Gyan Kendra)	2011-12	1021.22	2286.48	1265.26
7	Soyabean Seed Production and Distribution Programme	2011-12	1000	1200	200
8	Subsidy on Sprinkler Set, Pipeline, and Drip Irrigation	2011-12	2000	2209	209
	TOTAL		10562.12	20191.21	9629.09

(B) Statement showing new projects having *ex-post-facto* approval

Sl No	Project	Project Year	Sanctioned Cost
	Agriculture Department		
1	Distribution of Pipeline in Bundelkhand Region	2008-09	176.89
2	Distribution of Sprinklers & Pipeline in Bundelkhand Region	2009-10	754.93
3	Project on ground Water Recharge (Construction of Percolation Tank)	2010-11	800
4	Distribution of Multi Crop thresher on Subsidy to farmers	2010-11	40
5	Introduction of Drip Irrigation in Cotton & Sugarcane Areas	2010-11	500
6	Infrastructure Development of Farms of State Seed Corporation	2011-12	372.85
7	Organic Farming Development in Balram Gram	2011-12	340
8	Training of Farmers for Agriculture Mechanization	2011-12	22.5
9	Distribution of Multi Crop Thresher	2011-12	310
10	Dug well in Bundelkhand Region	2011-12	450
	Sub Total		3767.17
	Animal Husbandry Department		
11	Formation Of New Dairy Cooperative Societies In The Jurisdiction Of Regional Cooperative Milk Unions	2011-12	1517
12	Accelerated Fodder Development Programme	2011-12	1360
13	National Mission For Protein Supplement Scheme (NMPS).	2011-12	1244
14	Strengthening of Veterinary Hospitals	2011-12	1087.87
15	Strengthening of Cold Chain for AI	2011-12	810.6
16	Eradication of Infertility Among Bovines	2011-12	751.2
17	Strengthening & Expansion Of Milk Marketing Network & Increasing Consumer Awareness Through Publicity Measures In The State	2011-12	225
18	Support to New Cattle Feed Plant at Seoni	2011-12	185
19	Strengthening of State Level AH Training Center	2011-12	155
20	Deep Freezer for Storage of Vaccine Fluid (Rs.150.00 Lakh)	2011-12	150
21	Cold Boxes for transportation of Vaccines	2011-12	103.75
22	e-Vet Project – Pilot Run	2011-12	55.84
	Sub Total		7645.26
	Horticulture Department		
23	Project on Micro irrigation	2011-12	300
	Total for New projects		11712.43
	Grand Total		21341.58

(Source: Minutes of SLSC meetings)

Appendix 2.29
(Reference: paragraph 2.4.7.4, Page 76)
Statement showing details of allocation of fund without requirement

(₹ in crore)

Sl. No.	District	Name of Scheme/ project	Year	Fund Allotted	Expenditure	Surrendered Amount	Percentage of surrender
1	DDA, Umaria	Seed treatment	2010-11	0.19	0.13	0.06	31.58
	DDA, Umaria	Distribution of Pump	2010-11	1.22	0.7	0.52	42.62
2	DDA, Dhar	Seed treatment	2010-11	0.81	0.74	0.07	8.64
3	DDA, Vidisha	RKVY	2010-11	4.1	2.78	1.32	32.20
			2011-12	9.53	8.49	1.04	10.91
4	ADH, Hoshangabad	RKVY	2010-11	1.13	0.22	0.91	80.53
5	DDA Khargone	IPM and demonstration	2008-09	0.13	0.05	0.08	61.54
	DDA Khargone	IPM, seed production and demonstration	2009-10	1.92	1.78	0.14	7.29
	DDA Khargone	Seed treatment	2011-12	0.37	0.33	0.04	10.81
6	DDA Bhopal	RKVY	2008-09	2.39	2.24	0.15	6.28
			2009-10	4.44	4.31	0.13	2.93
Total				26.23	21.77	4.46	

(Source: Information provided by the department)

Appendix 2.30
(Reference: paragraph 2.4.8.2 (i), Page 79)
Statement showing shortage in performance of CHCs controlled by other departments when compared with CHCs of Director: Agriculture Engineering

Name of controlling Department/organisation/ wing	Total tractors provided	Year 2011-12 (as per available information)						Year 2012-13 (as per available information)						Computation of short fall in achievement with respect to CHC of AED	
		Tractors for which Progress is available	Stipulated target for tractors (at 1000 in hours)	Actual progress as per information available (in hours)	Average progress per tractor (in hours per tractor)	Short achievement of target (in percentage)	Tractors for which Progress is available	Target for tractors (at 700 in hours)	Actual progress as per information available (in hours)	Average progress per tractor (in hours per tractor)	Short achievement of target (in percentage)	Shortfall during 2011-12 w.r.t AED in per cent	Shortfall during 2012-13 w.r.t AED in per cent		
Director Agriculture Engineering (DAE)	164	164	164000	47876.29	291.93	70.81	144	100800	75757.57	526.09	24.84	0.00	0.00		
Farms of Agriculture Department	48	48	48000	11150.33	232.3	76.77	48	33600	16286.33	339.3	51.53	20.43	35.51		
Apex Bank(PACS)	415	393	393000	80476.89	204.78	79.52	210	147000	54154.29	259.11	63.16	29.85	50.75		
Beej Nigam	44	43	43000	13823.65	321.48	67.85	42	29400	17462.14	415.77	40.60	-10.12	20.97		
Co-operative MARKPFID - vipran sangh	132	99	99000	17711.44	178.9	82.11	98	68600	22864.57	233.31	66.67	38.72	55.65		
	47	27	27000	3945.9	146.14	85.39	22	15400	6066.02	275.73	60.61	49.94	47.59		
TOTAL / Average	850	774	774000	174984.5	229,255	77.39	564	394800	192590.92	341.55	51.22				

(Source: Information as provided by Director, Agriculture Engineering, FW&AD)

Appendix 2.31
(Reference: paragraph 2.4.8.3 (i), Page 81)
Statement showing details of four Cattle Breeding farms

(₹ in lakh)

Sl. No.	Name of unit	District	Description of Breeding farm	Projected cost	Release amount	Utilised amount	status of works
1	DDVS Mandsaur	Mandsaur	Establishment of Gir Cattle Farm, Basakhedi, Mandsaur	351.72	223.25	223.25	4 out of 11 sheds were completed.
2	DDVS Badwani	Badwani	Establishment of Goat rearing farm, Thikari, Barwani	193.15	126.25	126.25	2 out of 15 sheds were completed
3	DDVS Shivpuri	Shivpuri	Establishment of Bhadawri Buffalo farm, Shivpuri	358.01	163	163	Diverted fund for road construction from irrigation facility
4	DDVS Hoshanga-bad	Hoshanga bad	Establishment of Jafrabadi Buffalo breeding Farm Babai, Hoshangabad	686	370	370	land was transferred to Commerce Industries and Employment Department for industrial use. Thus the expenditure incurred on construction of sheds and infrastructure was unfruitful. compensation for the incurred cost by the department and allotment of land for the Farm is still awaited
Total				1588.88	882.5	882.5	

(Source: Information provided by Animal Husbandry Department)

Appendix 2.32
(Reference: paragraph 2.4.8.3 (ii), Page 82)
Statement showing availability of cold chain

Sl No	Name of unit	Number of			Availability of	
		Hospital	Dispensaries	Total	Refrigerator	Deep freezer
1	DDVS, Gwalior	19	21	40	15	01
2	DDVS, Mandsaur	06	25	31	29	Nil
3	DDVS, Badwani	12	32	44	08	02
4	DDVS, Shajapur	20	30	50	17	01
5	DDVS, Khargone	17	46	63	16	01
6	DDVS, Chhindwara	26	72	98	25	06
	Total	100	226	326	110	11

(Source: Information provided by Animal Husbandry Department)

Appendix 2.33

(Reference: para 2.4.8.7 (ii), Page 87)

Statement showing priority ranking of districts selected and those not selected

Districts not classified as high priority selected by the Department and their priority rank as per RAPI		Top prioritised district as per RAPI which were not selected in the programme	
District	Priority Rank	District	Priority Rank
Katni	185	Jhabua	36
Raisen	186	Sidhi	49
Sehore	211	Shahdol	64
Tikamgarh	245	Chhindwara	70
Jabalpur	254	Barwani	73
Datia	316	Khargone	91
Narsinghpur	323	Betul	114
Hoshangabad	390	Khandwa	129
Ashoknagar	No rank ⁶	Bhind	147
		Sheopur Kalan	150

(Source: RAPI index issued by Planning Commission, GOI and information as provided by FW&AD)

⁶ New district made out of Guna district which had priority rank of 53.

Appendix 2.34
(Reference: paragraph 2.5.4.2, Page 95)
Statement showing Details of availability of equipment in district laboratories

Sl No	Name of PIU	Standard Proctor Density Test Apparatus	Electrically operated centrifuge type bitumen extractor	Penetration test apparatus with standard needles	Compression Testing machine	Aggregate Impact Value test apparatus
		Testing of CBR value	Bitumen content test	Penetration test of bitumen	Compressive strength of concrete	Aggregate impact test
1	Hoshangabad	Not Available	Not Available	Not Available	Available	Not Available
2	Indore	Not Available	Not Available	Not Available	Available	Available
3	Ratlam	Not Available	Not Available	Not Available	Not Available	Available
4	Sehore	Available	Not Available	Not Available	Not Available	Not Available
5	Ujjain	Available	Available	Not Available	Available	Not Available

(Source: Information provided by PIUs)

Appendix 2.35
(Reference: paragraph 2.5.4.3, Page 96)
Statement showing details of works where horizontal alignment, surface levels and surface regularity tests were not carried out

Sl. No.	Name of PIU	Package No.	Name of road	ALS-1	ALS-2	ALS-3
1	Ratlam	3129	Badodiya -Nayan road	NR	NR	NR
2	Ratlam	3111	Handikhora-Serafanta to semaliya road	NR	NR	NR
3	Ratlam	3116	Bajna- Sundrel road	NR	NR	NR
4	Ratlam	3120	Umar to Amarpada	NR	NR	NR
5	Ratlam	3125	Jaora to Lakhkheda	NR	NR	NR
6	Sehore	3576	Satramau to Chikli	-	NR	NR
7	Sehore	3583	Chakldi to Kotrapipal	-	NR	NR
8	Sehore	3581	Jhalki to Gaukhedi	NR	NR	NR
9	Harda	1523	Sirali to Babdiya	NR	NR	NR
10	Harda	1523	Gupteshwar to Temlawadi to Kanpura	NR	NR	NR
11	Harda	1523	Charuwar to Babdiya Rayat	NR	NR	NR
12	Harda	1523	Harda-Khandwa road to Bamangaon	NR	NR	NR
13	Harda	1512	Harda-Khandwa road to Khamlay	NR	NR	NR
14	Harda	1512	Khamlay to Badnagar	NR	NR	NR
15	Harda	1512	Khamlay to Kalyakhedi	NR	NR	NR
16	Ujjain	4354	Ujjain Maxi road to Jawasia	NR	NR	NR
17	Ujjain	4334	Khachrod to Bhatkhedi	NR	NR	NR
18	Ujjain	4376	Delchi to AB road Katwariya	NR	NR	NR
19	Ujjain	4325	Banbana to Borkheda Pitramal road	-	NR	NR
20	Vidisha	4559	Jhukarjogi to Dhanwas	NR	NR	NR
21	Vidisha	4555	Gulabganj Gyaraspur to Inderwas road	NR	NR	NR
22	Vidisha	4552	SH-23 to Garetha road	NR	NR	NR
23	Vidisha	4552	Garetha to Pardha road	NR	NR	NR
24	Vidisha	4552	Korwasa to Banskhedigogal road	NR	NR	NR
25	Indore	1717	Gagenda to Mandala road	NR	NR	NR
26	Indore	1709	Bada Bangarda to Palakhedi road	NR	NR	NR
27	Indore	1709	Sanwar to Kachaliya road	NR	NR	NR
28	Indore	1709	Kachaliya to Khalkhala road	NR	NR	NR
29	Chhindwara3	0731	Kangla to Bijorimal	NR	NR	NR
30	Chhindwara3	0750	Rampur to Chaumau road	NR	NR	NR
31	Chhindwara3	0750	Damua Sami road to Dehri	NR	NR	NR
32	Chhindwara3	0775	Bichhua- Jhontkala Road to Ghatiya	NR	NR	NR
33	Chhindwara3	0775	Kangla Bijori to Bichbehri	NR	NR	NR
34	Chhindwara3	0775	Ghatiya to Jhapiya	NR	NR	NR
	Seven PIUs	21 Pkgs				

(i) Horizontal alignment tests (ALS-1)– Seven PIUs, 31 roads of 21 packages (ii) Surface level tests (ALS-2) - Seven PIUs, 34 roads of 21 packages (iii) Surface regularity tests (ALS-3) - Seven PIUs, 34 roads of 21 packages

(Source: Quality control registers maintained by PIUs)

Appendix 2.36

(Reference: paragraph 2.5.4.4, Page 97)

Statement showing execution of earthwork without ascertaining natural moisture content (EW-3) and moisture content at time of compaction (EW-6) adequate moisture content for compaction

Sl. No.	Name of PIU	Package No.	Name of road	EW-3	EW-6
1	Ratlam	3129	Badodiya -Nayan road	NR	NR
2	Ratlam	3111	Handikhora-Serafanta to semaliya road	NR	NR
3	Ratlam	3116	Bajna- Sundrel road	NR	NR
4	Ratlam	3120	Umar to Amarpada	NR	NR
5	Ratlam	3125	Jaora to Lakhkheda	NR	NR
6	Ratlam	3123	Daulatpura to Chwnikanwa	NR	-
7	Sehore	3581	Jhalki to Gaukhedi	NR	NR
8	Bhopal	526	Kolar road to Thuakheda	NR	-
9	Bhopal	526	Kolar road to Borda	NR	-
10	Bhopal	526	Nayapura to Kolar Road	NR	-
11	Ujjain	4354	Ujjain Maxi road to Jawasia	NR	-
12	Ujjain	4334	Khachrod to Bhatkhedi	NR	NR
13	Ujjain	4376	Delchi to AB road Katwariya	NR	-
14	Ujjain	4325	Banbana to Borkheda Pitramal road	NR	NR
15	Vidisha	4555	Gulabganj Gyarpur to Inderwas road	NR	NR
16	Vidisha	4552	SH-23 to Garetha road	NR	NR
17	Vidisha	4559	Jukarjogi to Dhanwas	NR	NR
18	Vidisha	4552	Garetha to Pardha road	NR	NR
19	Vidisha	4552	Korwasa to Banskhedigogal road	NR	NR
20	Chhindwara3	0731	Kangla to Bijorimal	NR	-
21	Chhindwara3	0775	Bichhua- Jhontkala Road to Ghatiya	NR	-
22	Chhindwara	0775	Kangla Bijori to Bichbehri	NR	NR
23	Chhindwara	0775	Ghatiya to Jhapiya	NR	NR
	Six PIUs	18 Pkgs			

(i) Natural moisture content was not ascertained – Six PIUs, 23 roads of 18 packages

(ii) Moisture content at time compaction was not ascertained - Six PIUs, 15 roads of 14 packages

(Source: Quality control registers maintained by PIUs)

Appendix 2.36 (Contd.)
List of roads where optimum moisture content for achieving maximum dry density was not assured

Sl. No.	Name of PIU	Package No.	Name of road	Optimum moisture content for achieving maximum dry density (in per cent)	Moisture content as per field density test (in per cent)
1	Ratlam	3116	Bajna- Sundrel road	11.10	7 to 9
2	Ratlam	3120	Umar to Amarpada	18.517	7 to 9
3	Ratlam	3125	Jaora to Bahadurpur	11.74	7 to 8
4	Ratlam	3123	Daulatpura to Chawnikanwa	12.338	7 to 7.5
5	Vidisha	4559	Jhukarjogi to Dhanwas	13.7	7.5 to 9
6	Vidisha	4555	Gulabganj Gyaraspur to Inderwas road	15.42	10.75 to 11.75
7	Vidisha	4529	Nateran to Ravan road	16.34	8.5 to 11
8	Chhindwara 3	0750	Rampur to Chaumau road	13.80	4 to 8
9	Chhindwara 3	0750	Damua Sarni road to Dehri	13.60	6 to 8
10	Chhindwara 3	0775	Bichhua- Jhontkala Road to Ghatiya	16.50	7 to 11
11	Chhindwara 3	0775	Ghatiya to Jhapiya	13.50	6 to 8
12	Chhindwara 3	0775	Kanla bijori to Bichbeltri	14.20	7 to 10
	Three PIUs	9 Pkgs			

(Source: Quality control registers maintained by PIUs)

Appendix 2.37
(Reference: paragraph 2.5.4.8, Page 100)
Statement showing execution of cement concrete work without approved mix design/use of weigh batcher

Sl. No.	Name of PIU	Package No.	Number of roads	Quantity (cu m)	Rate (₹)	Value (₹)	Mix Design	Weigh batcher
1	Indore	1718	1	504.9	3676	1856012	A	NR
2	Indore	1710	3	1875	3676	6892500	A	NR
3	Indore	1717	1	95.55	3676	351242	A	NR
4	Indore	1709	4	2008.51	2738	5499300	A	NR
5	Ujjain	4348	2	571.276	3676	2100011	A	NR
6	Ujjain	4354	2	1642.27	3250	5337378	A	NR
7	Ujjain	4334	2	886.53	3249	2880336	N	NR
8	Ujjain	4376	1	701.865	3676	2580056	A	NR
9	Harda	1507	2	25935.6	2848	73864523	A	-
10	Harda	1523	9	7155	3676	26301780	A	-
11	Harda	1512	3	1834	3249	5958666	A	NR
12	Harda	1516(B/W)	1	5272.53	3676	19381806	A	-
13	Sehore	3576	1	2344.36	4043	9478247	A	-
14	Sehore	3583	2	1500	3600	5400000	N	-
15	Ratlam	3122	2	624.46	3676	2295515	A	NR
16	Ratlam	3120	3	633.263	3676	2327875	N	-
17	Ratlam	3129	1	704.828	3676	2590948	N	NR
18	Ratlam	3111	2	384	3676	1411584	N	NR
19	Hoshangabad	1641	2	3186.01	3676	11711758	A	-
20	Hoshangabad	1637	1	1700.91	3676	6252541	A	-
21	Vidisha	4555	9	2847.881		8637000	N	NR
22	Vidisha	4529	2	1999.903	3676	7351000	N	NR
23	Chhindwara	0731	1	4764.77	2848	13570067	A	NR
	8 PIUs	23	57			22,40,30,145		

Mix design was not available: Seven packages- 21 roads

Weigh batcher was not utilised: 15 packages- 36 roads

A: Available on records

N: Not available on records

NR: Not found recorded

(Source: Records relating to approval mix designs and correspondence by PIUs)

Appendix 2.38
(Reference: paragraph 2.6.4, Page 109)
Statement showing details of divisions audited by the PA parties

Sl No	Name of the division	Audit period	Period covered
1.	EE WR Dn Shajapur	28.8.12 to 06.9.12	12/10 to 7/12
2.	EE Samrat Ashok Sagar Dn-II Vidisha	26.2.13 to 04.3.13	3/12 to 01/13
3.	EE WR Dn Sehore	03.12.12 to 13.12.12	12/11 to 11/12
4.	EE WR Harsi Dn. Dabra	6.3.13 to 15.3.13	6/10 to 2/13
5.	EE WR Dn Badwani	5.11.12 to 10.11.12	6/10 to 10/12
6.	EE WR Dn Khargone	25.10.12 to 03.11.12	6/10 to 9/12
7.	EE WR Dn Alirajpur	18.3.13 to 23.3.13	12/09 to 2/13
8.	EE WR Dn Multai Distt.Betul	22.11.12 to 01.12.12	6/10 to 10/12
9.	EE WR Dn Nowgaon.Chhatarpur	10.9.12 to 18.9.12	7/09 to 8/12
10.	EE WR Dn Tikamgarh	29.9.12 to 12.10.12	7/09 to 8/12
11.	EE WR Dn Panna	15.10.12 to 23.10.12	3/11 to 8/12
12.	EE WR Dn Sabalgarh	17.12.12 to 24.12.12	1/11 to 11/12
13.	EE WR Dn Sheopur	26.12.12 to 02.01.13	5/10 to 5/10
14.	EE WR Dn Shivpuri	04.01.13 to 11.01.13	7/10 to 12/12
15.	EE WR Dn Jaura. Morena	14.01.13 to 24.01.14	2/10 to 12/12
16.	EE HEM Dn Bhopal	25.3.13 to 02.4.13	12/11 to 02/13
17.	EE HEM Dn Sagar	04.4.13 to 12.4.13	12/11 to 02/13
18.	EE Bansagar Disty Dn Rewa	28.1.13 to 6.2.13	7/10 to 12/12
19.	EE Keoti Canal Dn Rewa	07.2.13 to 15.2.13	6/10 to 12/12
20.	EE Upper Purwa Canal Dn Satna	18.2.13 to 23.2.13	4/12 to 01/13
21.	EE Bariyarpur LBC-II, Chhatarpur	20.09.12 to 28.9.12	01/10 to 8/12
22.	EE WR Dn Morena	17.12.12 to 22.12.12	3/11 to 11/12
23.	EE Sanjay Sagar Dn Ganjbasoda, Vidisha	6.12.12 to 14.12.12	4/12 to 11/12
24.	EE WR Kolar Canal Dn - II Nasrullaganj	31.12.12 to 05.01.13	11/10 to 11/12
25.	EE Harsi Canal Dn. Dabra, Gwalior	31.01.13 to 7.02.13	01/11 to 12/12
26.	EE WR Dn Harda	30.10.12 to 6.11.12	6/10 to 9/12
27.	EE WR Dn Seoni	6.3.13 to 15.3.13	4/12 to 2/13
28.	EE WR Survey Dn Balaghat	7.11.12 to 9.11.12	7/10 to 10/12
29.	EE Upper Purwa Canal Dn Rewa	18.03.13 to 23.3.13	7/10 to 2/13
30.	EE Kutni Dam Dn Rajnagr Khajwa	14.1.13 to 18.1.13	12/09 to 12/12
31.	EE LA& R Dn Govindgarh, Rewa		02/10 to 11/12
32.	EE LA& R Dn Teothar, Rewa	26.11.12 to 29.11.12	12/10 to 10/12
33.	EE Rockfill Dam Dn Deolond, Shahdol	21.11.12 to 24.11.12	9/10 to 10/12
34.	EE Pench Project Dam Dn Chaurai, Chhindwara	7.01.13 to 11.01.13	3/11 to 12/12
35.	EE WR Dn Gwalior	08.2.13 to 15.2.13	2/11 to 01/13
36.	EE Harsi high Level canal Dn II Gwalior	21.01.13 to 30.01.13	02/11 to 12/12
37.	EE Mahan Canal Dn Sidhi	24.12.12 to 29.12.12	05/10 to 11/12

Appendix 2.39
(Reference: paragraph 2.6.5.1, Page 110)
Statement showing details of amount surrendered in the last week of the financial year

Grant No	Page no of Appropriation A/c	Amount (₹ in lakh)	Revenue (R)/Capital (C)	Date of surrender
2010-11				
23-Major&Medium Irrigation	94	290.81	R	31.3.11
		792.95	C	--do--
		9.00	C	--do--
40-Command Area Development	137	117.00	R	--do--
		258.32	C	--do--
45-Minor Irrigation	160	49.45	R	--do--
		95.77	C	28&31.3.11
57-Externally Aided Project	190	1145.85	C	28.3.11
Total		2759.15		
2011-12				
23-Major&Medium Irrigation	95	467.21	R	31.3.12
		290.50	C	31.3.12
40-Command Area Development	138	10968.55	R	31.3.12
		138.86	C	31.3.12
45-Minor Irrigation	162	453.00	R	31.3.12
		191.44	C	31.3.12
		115.00	C	31.3.12
57-Externally Aided Project	192	3607.72	C	31.3.12
Total		16232.28		

(Source: Appropriation Account of GOMP)

Appendix 2.40
(Reference: paragraph 2.6.5.3, Page 111)
Statement showing details of amounts drawn and deposited in K-deposit

(₹ in lakh)

S.No.	Year	Amount	Scheme	Head	Year of actual utilisation
1.	2010-11	10412.25	Bariyarpur Project	61/4700 Major Capital out lay 1501 ACA (2884) Canal & subsidiary work	2011-12 & 2013-14
		8098.75	Rajghat Project	61/4705 Command development area 1501 ACA (6067) Command Development Area	2011-12 & 2012-13 & 2013-14
		2034.30	Minor Construction of ongoing schemes	61/4702 Major Capital out lay 1501 ACA (6068) construction scheme	2011-12
		3517.20	PRR of minor works	61/4702 Major Capital out lay 1501 ACA (6069) RRR scheme	2011-12
		542.69	LIS scheme	61/4702 Major Capital out lay 1501 ACA (6071) LIS scheme	-
		1744.31	ERM of canal	61/4702 Major Capital out lay 1501 ACA (6074) ERM of canal	2011-12 & 2012-13 & 2013-14
		8313.35	New Minor scheme	61/4702 Major Capital out lay 1501 ACA (6077) New Minor scheme	2011-12 & 2012-13
2.	2011-12	2467.71	Singhpur Barrage	61/4701 Medium Capital out lay 1501 ACA (5584) Singhpur Barrage	-
		500.00	New minor scheme	61/4702 Major Capital out lay 1501 ACA (6077) New minor scheme	2012-13
3	2012-13	5111.95	ERM of canal	61/4702 Major Capital out lay 1501 ACA (6074) ERM of canal	2013-14
	Total	42742.51			

Appendix 2.41
(Reference: paragraph 2.6.5.4 (A), Page 112)
Statement showing details of expenditure in excess of Administrative Approval

(₹ in lakh)

Sl. No	Name of the Division	Total No of works contract during 2010-11 to 2012-13	No of work	Original AA	Expenditure Upto 31.3.13	Excess expenditure over AA	Per-centage of excess	No of works completed and finalised
1	EE WR Dn Alirajpur	07	3	204.14	272.69	68.55	23 to 52	03
2	EE WR Dn,Shivpuri	27	2	1077.46	1264.83	187.37	10 to 20	02
3	EE WR Dn,Badwani	19	8	3894.79	5611.93	1717.14	22 to 73	02
4	EE WR Dn Multai	34	14	2324.29	3618.16	1293.87	19 to 117	05
5	EE WR Dn Khargone	48	34	6233.23	9685.62	3452.39	12 to 673	0
6	EE WR Dn Sabalgarh	16	02	272.57	1182.97	910.40	24 to 697	0
7	EE SAS Dn-II Vidisha	27	01	6581.85	9676.16	3094.31	47	0
	Total	178	64	20588.33	31312.36	10724.03		12

Appendix 2.42
(Reference: paragraph 2.6.5.6, Page 114)
Statement showing details of Miscellaneous Works Advance

(₹ in lakh)

Sl.No.	Name of Division	Period	No of items (transactions)	Amount
1.	EE Sanjay Sagar, Bah river Dn Ganjbasoda, Vidisha	Up to 11/12	41	2.38
2.	EE WR Dn Harda	8/70 to 10/12	193	24.68
3.	EE WR Dn Alirajpur	1972 to 3/08	30	7.25
4.	EE Upper Purva Canal Dn Rewa	6/90 to 2/13	13	259.52
5.	EE WR Dn Gwalior	1978 to 01/13	96	26.82
6.	EE WR Dn Panna	1975 to 3/09	41	24.99
7.	EE LA&R Dn Govindgarh Rewa	10/91 to 7/05	12	4.75
8.	EE WR Dn I, Seoni	1957 to 2/13	283	59.54
9.	EE WR Survey Dn Balaghat	4/79 to 10/12	38	30.47
10.	EE Kolar Canal Dn Nasrullaganj, Sehore	Up to 11/12	02	0.89
11.	EE WR Dn Morena	4/79 to 3/11	206	194.71
12.	EE Keoti canal Dn,Rewa	10/79 to 12/12	343	174.25
13.	EE WR Dn,Sheopur	1966 to 1998	177	9.66
14.	EE WR Dn,Shivpuri	1977 to 3/12	40	15.97
15.	EE WR S A S Dn-II,Vidisha	1967 to 01/13	47	3.65
16.	EE HEM Dn,Bhopal	2/79 to 3/05	26	30.40
17.	EE WR Dn,Badwani	1965 to 10/12	105	9.20
18.	EE HEM Dn, Sagar	11/66 to 02/07	110	7.69
19.	EE WR Dn,Shajapur	1975 to 2006	119	43.77
20.	EE WR Dn Mahan Canal Dn Sidhi	1984 to 2006	68	78.32
21.	EE LA&R Dn Teonthar Rewa	1983 to 2006	86	382.79
22.	EE PENCH Diversion Dn Chourai, Chhindwara	8/88 to 12/12	15	10.78
23.	EE Kutni Dam Dn Rajnagar,Chhatarpur	6/05 to 3/10	04	82.78
24.	EE Rockfill Dam Dn Deoland, Shadol	2007 to 11/12	12	1.22
25.	EE WR Tikamgarh	1959 to 2003	60	14.18
26.	EE WR Sabalgarh ,Morena	1964 to 6/10	98	8.81
27.	EE WR Sehore	1985 to 1999	17	2.29
28.	EE WR Nowgaon,Chhatarpur	5/75 to 10/06	223	11.71
29.	EE Bariyarpur LBC Dn-II Chhatarpur	1981 to 8/12	158	100.99
30.	EE WR Multai, Betul	1981 to 10/12	34	24.04
31.	EE WR Khargone	1964 to 12/10	347	136.78
	Total		3044	1785.28

Appendix 2.43
(Reference: paragraph 2.6.5.7, Page 115)
Statement showing irregular booking the cost of land to the final head

(₹ in lakh)

Sr No	Name of the Division	Amount
1.	EE WR Dn Shajapur	9644.00
2.	EE Samrat Ashok Sagar Dn-II Vidisha	8488.37
3.	EE WR Dn Sehore	5017.59
4.	EE WR Dn Badwani	919.57
5.	EE WR Dn Khargone	1598.25
6.	EE WR Dn Alirajpur	297.04
7.	EE WR Dn Multai, Betul	3616.68
8.	EE WR Dn Nowgaon, Chhatarpur	930.42
9.	EE WR Dn Tikamgarh	4901.23
10.	EE WR Dn Panna	10923.26
11.	EE WR Dn Sabalgarh	65.38
12.	EE WR Dn Sheopur	8313.40
13.	EE WR Dn Shiyपुरी	2149.81
14.	EE Bansagar Disty Dn Rewa	5721.60
15.	EE Keoti Canal Dn Rewa	2344.09
16.	EE Upper Purwa Canal Dn Satna	1253.37
17.	EE Sanjay Sagar Dn Ganjbasoda, Vidisha	10860.34
18.	EE Harsi Canal Dn. Dabra, Gwalior	2176.93
19.	EE WRD Dn Harda	676.95
20.	EE WR Survey Dn Balaghat	99.32
21.	EE Upper Purwa Canal Dn Rewa	192.07
22.	EE Kutni Dam Dn Rajnagr Khajwa	3793.11
23.	EE LA& R Dn Govindgarh, Rewa	5100.00
24.	EE LA& R Dn Teothar, Rewa	3331.03
25.	EE Rockfill Dam Dn Deolond	36.00
26.	EE Pench Project Dam Dn Chaurai, Chhindwara	16216.88
27.	WR Dn Gwalior	5654.52
28.	EE Harsi High Level Canal Dn-II Gwalior	4138.81
29.	EE Bariyarpur LBC Dn-II Chhatarpur	1251.48
30.	EE Mahan Canal Dn Sidhi	5353.24
31.	EE WR Dn Nasrullaganj, Sehore	700.84
	Total	125765.58

Appendix 2.44
(Reference: paragraph 2.6.5.8, Page 115)
Statement showing details of non credit of Government Deposit

(₹ in lakh)

Sl.No	Name of the division	Amount
1.	EE Sanjay Sagar Proj Dn Ganjbasoda, Vidisha	2.84
2.	EE WR Dn Harda	131.15
3.	EE WR Dn Morena	43.98
4.	EE WR Dn, Shivpuri	7.24
5.	EE WR SAS Dn-II, Vidisha	4.12
6.	EE L A & R Dn Teonthar, Rewa	75.27
7.	EE Harsi High Level Dn-II Gwalior	44.99
8.	EE PENCH Diversion Dn Chourai, Chhindwara	10.23
9.	EE WR Dn Seoni	13.87
10.	EE WR Dn Badwani	1.06
11.	EE WR Dn Khargone	12.76
12.	EE Bariyarpur LBC Dn-II Chhatarpur	0.17
13.	EE WR Dn Multai, Betul	77.96
14.	EE WR Dn Shajpur	46.79
15.	EE WR Dn Sabalgarh	78.06
16.	EE HEM Dn Bhopal	0.36
17.	EE WR Dn Nowgaon, Chhatarpur	844.95
18.	EE Purwa Canal Dn-II Satna	32.23
19.	EE Harsi WR Dn Dabra, Gwalior	18.06
20.	EE WR Dn Panna	169.02
	Total	1615.11

Appendix 2.45
(Reference: paragraph 2.6.5.10, Page 116)
Statement showing details of un authorised retention of welfare cess

(₹ in lakh)

Sl No	Name of the division	Amount	Related period	Delay (in Months)
1.	EE WR Dn Multai	16.54	4/10 to 7/12	02 to 12
2.	EE WR Dn Harda	24.72	4/07 to 09/12	01 to 54
3.	EE WR Dn Sabalgarh	20.67	8/11 to 9/12	02 to 09
4.	EE WR Dn Sheopur	158.5	03/08 to 09/11	02 to 15
5.	EE WR Dn Jaura	7.23	1/10 to 3/12	02 to 05
6.	EE SAS Dn Vidisha	6.60	2/12 to 8/12	01 to 09
7.	EE WR Harsi Dn Dabra	6.44	5/10 to 6/10	03 to 04
8.	EE WR Dn Sehore	30.41	2/11 to 9/12	01 to 12
9.	EE WR Dn Alirajpur	11.04	3/05 to 08/12	01 to 57
10.	EE Upper Purva Canal Dn Rewa	29.5	6/09 to 02/13	01 to 26
11.	EE Upper Purva Canal Dn Satna	39.88	4/08 to 3/12	09 to 48
12.	EE WR Dn Gwalior	51.53	3/10 to 12/12	01 to 09
13.	EE Harsi High Level Dn Dabra	39.21	9/10 to 9/12	03 to 09
14.	EE WR Dn Seoni	1.01	07/11 to 3/12	03 to 11
15.	EE LA&R Govindgarh, Rewa	15.43	01/12 to 11/12	01 to 11
16.	EE W R Kutni Dam Div Rajnagar, Chhatarpur	50.86	9/08 to 3/11	04 to 36
17.	EE WR Dn Panna	80.24	4/11 to 6/12	04 to 08
	Total	589.81		

Appendix 2.46
(Reference: paragraph 2.6.6.4, Page 118)
Statement showing details of non Submission of MAS Account

Sr No	Name of Division	Items	Amount (₹ in lakh)	Pending Since
1.	EE Keoti Canal Dn Rewa	Hume pipes	10.87	02/ 2011
2.	EE WR Dn Joura, Morena	Cement	8.92	05/ 2010
3.	EE WR Dn Khargone	Cement, Hume pipe	184.22	03/ 2011
4.	EE Bariyarpur LBC-II Chhatarpur	Cement, Steel	32.73	06/ 2010
5.	EE WR Dn Panna	Cement ,sand, steel	13.43	09/ 2011
6.	EE WR Dn Badwani	Cement	19.54	04/11 to 9/12
	Total		269.71	

Appendix 3.1
(Reference: paragraph 3.1.1, Page 124)
Statement showing calculation of Net Present Value

Sl. No	Name of Lease Holders/Project	Area of Forest land diverted (in Ha.)	Class of Eco-value of Site	Density	Realised amount of NPV at 5.80 lakh/Ha. (₹ in crore)	Recoverable Amount of NPV @6.26* lakh/Ha. (₹ in crore)	Amount of short recovery of NPV (₹ in lakh)
1	Budhon Rajapur Mines	81.483	III	Less than 0.4	12.59	13.59	99.81
2	Loharchha Mines	10.000					
3	Bhilari Mines	20.000					
4	Telita Mines	24.930					
5	Khada Mines	80.650					
	Total	217.063			12.59	13.59	99.81

* Based on class of eco value and density of forest.

Appendix 3.2
(Reference: paragraph 3.1.2, Page 125)
Statement showing expenditure incurred on the regeneration activities not deducted to arrive at net profit

(Figures in ₹)

Head of account		Name of Division		Total
		West Mandla	East Mandla	
10-2406-7882	Mandla District for the year 2011-12			
	Irrigated Khamer Plantation	1000000	0	1000000
	Teak plantation (Preparation)	2240000	0	2240000
	Bamboo regeneration-cum-overlapping	2317000	0	2317000
	Mixed Plantation (Preparation)	0	5999575	5999575
	Tusher Plantation	0	1436000	1436000
	Total	5557000	7435575	12992575
10-2406-2536	Eco-forestry	0	211630	211630
41-2406-7882	RDF Gap Plantation	1450000	967988	2417988
	Teak Plantation	9054000	4839269	13893269
	Mixed Plantation	675000	1416905	2091905
	High-tech Plantation	60000	213709	273709
	Urja Van Charagah Development Plantation	1050000	1048682	2098682
	Bamboo Plantation	0	3075128	3075128
	Total	12289000	11561681	23850681
	Total Mandla District			37054886
	Didori District for the year 2010-11			Dindori
41-2406-7882	Teak Plantation			2041268
	Mixed Plantation			2882227
	Gap Plantation			479236
	Maintenance of Bamboo plants			327805
	Bamboo Plantation			6777874
	Afforestation of barren Hills			129755
	High Technology Plantation			149939
	Fuel Plantation			2587289
	Total			15375393
	Plantations under NREG Scheme			14554022
	Total Didori District			29929415
	G Total			66984301 (₹ 6.70 crore)

Appendix 3.3
(Reference: paragraph 3.1.2, Page 125)
Statement showing calculation of excess dividend paid

(Figures in ₹)

Sl. No.	Details	Calculations of dividend on which payment made			Calculation of dividend payable			Difference
		Mandla (2011-12)	Dindori (2010-11)	Total	Mandla (2011-12)	Dindori (2010-11)	Total	
1	Net revenue less taxes (Timber + Bamboo)	731206405	302111633	1033318038	731206405	302111633	1033318038	0
2	Expenditure of Production Division (100%)	122211902	92691036	214902938	122211902	92691036	214902938	0
3	Expenditure of territorial division (non-plan) (50%)	70673813	36349143	107022956	70673813	36349153	107022966	-10
4	Expenditure on Regeneration ⁷ (100%)	21234139	9912869	31147008	58289025	39842284	98131309	-66984301
5	Total deductible expenditure (2+3+4)	214119854	138953048	353072902	251174740	168882476	420057216	-66984314
6	Net profit (from timber only)	517086551	163158585	680245136	480031665	133229158	613260823	66984313
7	Dividend (10% of Net profit)	51708655	16315859	68024514	48003167	13322916	61326083	6698431
8	Dividend payable to JFM committees (80%)	41366924	13052687	54419611	38402533	10658333	49060866	5358745

⁷ Details of Audit calculation of expenditure on regeneration not taken in calculation by the Department is given in the Appendix 3.2.

Appendix 3.4
(Reference: paragraph 3.1.3, Page 126)
Statement showing the excess payment to the contractor due to non-regulation of rate

Item no.	Name of item	Executed quantity (cu m)	Estimate quantity (cu m)	Estimated quantity + 10 per cent	Quantity in excess of 10 per cent	Estimated rate (₹)	Paid at quoted rate (₹)	Payable rate* (₹)	Difference (₹)	Excess payment (₹)
	(1)	(2)	(3)	(4)	(5)=(2-4)	(6)	(7)	(8)	(9)=(7-8)	(10)=(9*5)
2	Providing & Placing Cement Concrete (CC) 1:3:6	3037.953	1354.72	1490.19	1547.761	2331.98	2200	1570.58	629.42	974192
3	Providing & Placing CC 1:2:4	1181.25	550.75	605.83	575.425	2884.59	2600	1942.67	657.33	378244
8	Providing, laying & fixing in position NP3 RCC Hume pipe	1585 RM	45 RM	49.5	1535.50	2849.33	3500	1919.02	1580.98	2427595
12	Earth work for bund	288558.00	148005.74	162806.31	125751.68	43.00	50	28.96	21.04	264581.5
Total									64,25,846	

* Estimated rate minus 32.65 per cent overall tender percentage (for every item payable rate = estimated rate x (100-32.65) per cent).
= estimated rate x 67.35 per cent

Appendix 3.5
(Reference: paragraph 3.2.1, Page 129)
Statement showing the excess payment in price escalation of steel

Sl. No. of bill	Date	Details of payment made by the division				Payable at the basic rate of Steel by SAIL			Excess payment (Amount in ₹)		
		Quantity of steel consumed (M.T.)	Rate adopted on the date of tender (₹ Per MT)	Rate adopted for the period of consideration (₹ Per MT)	Rate Difference (₹ Per MT)	Payment made	Rate should have been adopted on the date of tender (₹ Per MT)	Rate adopted for the period of consideration (₹ Per MT)		Rate Difference (₹ Per MT)	Amount payable
	2	3	4	5	6=(5-4)	7=(3*6)	8	9	10=(9-8)	11=(3*10)	12=(7-11)
2 nd RA	12-05-2010	108.6	32312	39800	7488	813197	42400	43600	1200	130320	682876.8
5 th RA	16-08-2010	53.288	32312	38775	6463	344400	42400	38400	-4000	-213152	557552.344
8 th RA	22-01-2011	14.4	32312	42875	10563	152107	42400	42875	475	6840	145267.2
9 th RA	15-02-2011	50.241	32312	45900	13588	628674	42400	45900	3500	175843.5	452830.5
10 th RA	22-04-2011	94.624	32312	46450	14138	1337794	42400	46450	4050	383227.2	954566.91
11 th RA	27-06-2011	103.64	32312	48425	16113	1669951	42400	48425	6025	624431	1045520.3
14 th RA	12-09-2011	17.755	32312	48425	16113	286086	42400	48425	6025	106973.9	179112.44
15 th RA	27-09-2011	8.522	32312	48425	16113	137315	42400	48425	6025	51345.05	85969.936
16 th RA	18-10-2011	47.337	32312	48425	16113	762741	42400	50025	7625	360944.6	401796.45
17 th RA	24-11-2011	17.132	32312	48425	16113	276048	42400	50025	7625	130631.5	145416.41
20 th RA	08-02-2012	17.24	32312	48425	16113	277788	42400	51725	9325	160763	117025.12
21 st RA	28-02-2012	14.126	32312	48425	16113	227612	42400	51725	9325	131725	95887.288
22 nd RA	29-03-2012	23.211	32312	48425	16113	373999	42400	54625	12225	283754.5	90244.368
23 rd RA	28-04-2012	10.731	32312	48425	16113	172909	42400	54625	12225	131186.5	41722.128
		Total				7461622				2464834	4995788.2

Appendix 3.6
(Reference: paragraph 3.2.1, Page 129)
Statement showing loss due to short recovery of steel prices

1 Name of work	2 Qty. of steel consumed (in kg.)	3 Rate/kg of SAIL as tender date	4 Month of consideration	5 Rate of SAIL in the month of consideration (Rate/kg)	6 Difference (Col.3-5)	7 Recovery to be made (Col.2x6)	8 Recovery made as per running bill	9 Balance to be recovered	10 Value of work done	
										(Amount in ₹)
Const. of 13 Nos barracks in Central Jail, Jabalpur	36856	45.07	10/08	45.07	0	0				
	61884		12/08	38.09	6.98	431950.32				
	40668		1/09	32.86	12.21	496556.28				
	19577		3/09	31.49	13.58	265855.66		4,37,824	9,63,497.46	25523077
	15240		3/09	31.49	13.58	13.58	206959.2			
			Total			1401321.46				
Const. of 12 Nos barracks in Central Jail	31321.88	45.07	12/08	38.09	6.98	218626.722				
	115110.99		3/09	31.49	13.58	1563207.24				
	7621.17		3/09	31.49	13.58	103495.489		5,48,711	14,37,014.18	21528971
	8317.79		6/09	33.00	12.07	100395.725				
			Total			1985735.176				
					Grand total	33,87,046.636	9,86,535	24,00,511.64		

Appendix 3.7
(Reference: paragraph 3.2.2, Page 131)
Statement showing the details regarding extra cost due to incorrect application of rate of pitching and rock toe work

SL No.	Items	Rate prepared (Estimated)					Labour Rate applicable (Estimated)				Quantity Executed/Paid					Hard rock	
		Quantity	Material	Lead quoted by the contractor	Total rate	Amount	Rate	Lead ^y	Total rate	Amount	Quantity	Rate Paid (Full rate)	Payable (Labour rate only)	Extra cost	Estimated	Excavated	
1	2	3	4	5	6=7/3	7	8	9	10=11/3	11	12	13	14	15	16	17	18
1 Tikari tank, Sagar Dn. II (Quoted rate Item no. 1- 6 per cent above, Item no.2- 9 per cent below from estimated rate hence payable rate taken proportionately)																	
1	Rock Toe (cu.m)	21404	235	95.22	330.22	7068029	72	95.22	167.22	3579177	17493.69	350	177.25	172.75	3022035	51732	46026.53
2	45 cm stone pitching (sq m)	41264	177		219.85	9071868	43	95.22	138.22	5703510	41529.9	200	125.78	74.22	3082351		
	18569 cu m for lead				95.22 (2 km)												
	Total	62668				16139897				9486785	59023.62				6104386		
2 Satdhara tank Sagar Dn. I (Quoted rate Item no. 1- 118.30 per cent above from estimated rate hence payable rate taken proportionately)																	
	30 cm stone pitching (sq m)	33783.73	115		160.33	5416545	27		50.25	1697734	28366.20	350	109.70	240.30	6816398	20421.26	26700.21
	10135.12 cu.m			151.11 (10 km)													
3 Budasa tank WR Division, Dewas (Quoted rate Item no. 1- 13 per cent above, Item no.2 at par and Item no.3- 3.40 per cent above from estimated rate)																	
1	Rock Toe	5141.88	134	114.31 (5km)	248.31	1276780	63	77.51 (1km)	140.51	722486	5656.20	280	158.78	121.22	685645	48000	38365.60
2	22 cm boulder pitching	5695.06	187	114.31	301.31	1715978	119	77.51 (1km)	196.51	1119136	3081.00	293.43	158.78	134.41	414117		
3	Boulder spall under pitching	3882.99	100	114.31	214.31	832164	32	77.51 (1km)	109.51	425226	4079.49	300	196.51	103.49	619161		
	Total	14719.93				3824922				2266848	18799.50				2480849		

9 Lead of 500 m and 1 km has been taken into account due to availability of hard rock within area of the minor irrigation tanks.

Appendix 3.7 Contd.

Sl. No.	Items	Rate prepared (Estimated)					Labour Rate applicable (Estimated)					Quantity Executed/Paid					Hard rock	
		Quantity	Material	Lead as quoted by the contractor	Total rate	Amount	Rate	Lead	Total rate	Amount	Quantity	Rate	Rate	Payable (Labour rate only)	Extra cost	Estimated	Excavated	
1	2	3	4	5	6=7/3	7	8	9	10=11/3	11	12	13	14	15	16	17	18	
4	Haiderpur tank, Burhanpur (Quoted rate Item no. 1-60.5 per cent above, Item no. 2-38 per cent above and Item no. 3-60 per cent above from estimated rate)																	
1	Rock fee (cu m)	4865.95	154	95.22	249.21	1212692	72	80.04	152.04	712452	4424.14	400	244.02	155.98	690162	9963.76	32911.89	
2	22 cm pitching	2216.00	262	95.22	289.93	1655812	167	80.04	247.04	1410791	4132.08	400	340.92	59.08	2441.23			
3	Boulder spill under pitching	1095.80	140	82.80 (2km)	156.34	534949	45	80.04 (500m)	125.04	427840	2770.68	250	200.06	49.94	138368			
	Labour rate	2325.83	45	80.04 (500 m)		3403453				2578495	11326.90				1072653			
	Total	13998.36				3403453				₹ 1,78,62,866	1,17,516.22				₹ 1,64,74,286	1,30,117.02	1,44,004.23	
	Grand total	125,170.02				₹ 2,87,84,817												

Recovery of hard rock issued to contractor by Sagar Dn. 1 & 2 (39728.71 cu m + 14129.5 cu m) = 53,858.21 cu m X ₹ 80 = ₹ 43,08,657
 Net extra cost (₹ 1,64,74,286 - ₹ 43,08,657) = ₹ 1,21,65,629

Appendix 3.8
(Reference: paragraph 3.2.3, Page 132)
Statement showing the details regarding excess payment to the supplier on account of price variation

	Index of Material of IEEMA	Index of Material of Government of India (As per agreement)
At the time of opening of tender i.e. February 2008 the base date	196.05	119
At the time of supply of material (March 2012)	342.70	161

Sr. No.	Items	Price variation paid		Price variation payable		Excess Payment
		Calculation	Amount	Calculation	Amount	
1	Cylinders	$0.75 * 65 / 100 * 15188000 * (342.70 - 196.05) / 196.05$	5538477	$0.75 * 65 / 100 * 15188000 * (161 - 119) / 119$	2613229	2925240
2	Power pack assemblies	$0.75 * 65 / 100 * 8488500 * (342.70 - 196.05) / 196.05$	3095428	$0.75 * 65 / 100 * 8488500 * (161 - 119) / 119$	1460521	1634907
Total			8633905		4073750	4560147

(Amount in ₹)

Appendix 3.9
(Reference: paragraph 3.3.1, Page 134)
Statement showing incorrect computation of crust of Anuppur to Chachai road

Item	Departmental Calculation	Calculation by audit on basis of provisions of IRC 37
1. CVPD	133	133
2. Growth rate	7.5%	7.5%
3. Design life	10 years	10 years
4. VDF ¹⁰	3.5	1.5
5. Construction period	3 year	1 year
6. Lane distribution factor	Single lane (1)	Two lane (0.75)
7. CVPD after completion of road $A = P^{11}(1+0.075)^{x12}$	$A^{13}=133(1+0.075)^3$ = 166 CVPD	$A=133(1+0.075)$ =142.97 CVPD (Say 143)
8. Cumulative number of Standard Axles $N= \frac{365[(1+i)^n - 1] \times A \times D \times F}{r}$	$= \frac{365[(1+0.075)^{10} - 1] \times 166 \times 1 \times 3.5}{0.075}$ = 2992872 = 3 msa	$\frac{365[(1+0.075)^{10} - 1] \times 143 \times 0.75 \times 1.5}{0.075}$ = 829900 1 msa
Pavement thickness	GSB 230mm WBM 225 mm BM 50mm SDBC 25mm 530 mm (Executed)	GSB 205 mm WBM 225mm PC 20 mm Seal coat 430 mm (To be adopted)

Incorrect factors adopted;

1. Construction period- three years instead of one year
2. VDF- 3.5 instead of 1.5
3. Lane distribution factor- one instead of 0.75

-
- 10 VDF is a multiplier to convert the number of commercial vehicles of different axle loads to the number of standard axle load repetitions. 3.5 VDF is applicable for CVPD 150 to 1500.
 - 11 Number of commercial vehicle as per last count
 - 12 The year of completion of construction
 - 13 Design Traffic for project road
-

Appendix 3.11
(Reference: paragraph 3.4.1, Page 138)
Statement showing year wise mortality of plants and expenditure incurred

ame of Division	DFO (CA) Ichhawar division, Bhopal			DFO (CA) Kaveri division, Khandwa		
No of Project Sites	9			3		
Description	No. of Plants	Mortality	Expenditure Incurred (in ₹)	No. of Plants	Mortality	Expenditure Incurred (in ₹)
Year						
2003-04	0	0	Work not executed	Not applicable	Not applicable	Not applicable
2004-05	401102	144863	8570302	0	0	2178921
2005-06	256239	-42034	1160877	267000	58100	3552319
2006-07	298273	38993	933729	208900	78780	665603
2007-08	259280	30016	820941	130120	19150	243481
2008-09	229264	35653	645345	110970	7870	238034
2009-10	193611	79828	303021	103100	19510	343939
2010-11	113783			83590	2450	282688
2011-12				81140	-1340	304015
2012-13				82480	2055	
2013-14				80425		
Total			12434215			7809000

Appendix 3.12
(Reference: paragraph 3.4.1, Page 138)
Statement showing calculation of infructuous expenditure due to failure of plantation

Sr. No	Compartment No.	No. of Plants Planted	No. of Plants survived	Survival Percent age	Survival of plants required (75 per cent of saplings planted)	Less survival than the Required	Loss Factor ¹⁷ (7 6)	Total Expenditure (₹ in lakh)	Infructuous Expenditure (₹ in lakh) (8*9)
1	2	3	4	5	6	7	8	9	10
Division- DFO (CA) Ichhawar, Bhopal									
Year of Plantation- 2004									
1	376 A	30000	7500	25	22500	15000	0.67	11.78	7.89
2	226	32961	16480	50	24721	8240.75	0.33	18.30	6.04
3	448	38200	9500	24.87	28650	19150	0.67	13.82	9.26
4	452	18008	5092	28.28	13506	8414	0.62	7.72	4.79
5	343	27200	5540	20.30	20400	14860	0.73	8.36	6.10
6	509	23646	4842	20.47	17735	12892.5	0.73	7.03	5.13
7	626	80000	26605	32.63	60000	33395	0.56	23.60	13.22
8	39, 40, 42, 49	58100	18621	32.05	43575	24954	0.57	14.74	8.40
9	625, 626	80000	19603	24.05	60000	40397	0.68	18.99	12.91
	TOTAL	388115	113783					124.34	73.74
Division- DFO (CA) Kaveri, Khandwa									
Year of Plantation- 2005									
10	558	70000	17580	25	52500	34920	0.66	19.05	12.57
11	566	75000	16485	22	56250	39765	0.71	19.84	14.09
12	594	122000	46360	38	91500	45140	0.49	39.20	19.21
	TOTAL	267000	80425					78.09	45.87
	G. Total	655115	194208	30				202.43 (₹ 2.02 crore)	119.61 (₹ 1.20 crore)

¹⁷ Loss Factor = (Survival percentage as specified by SC (75) - Actual Survival percentage) ÷ Survival percentage as specified by SC (75).