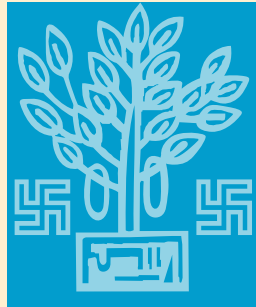




सत्यमेव जयते

**Report of the  
Comptroller and Auditor General of India  
on  
General, Social and Economic Sector  
for the year ended March 2014**



**Government of Bihar**  
*Report No. 4 of 2014*

**Report of the  
Comptroller and Auditor General of India  
on  
General, Social and Economic Sector**

**for the year ended March 2014**

**Government of Bihar**

*Report No. 4 of 2014*

## TABLE OF CONTENTS

DESCRIPTION	Reference to	
	Paragraphs	Page/ Remarks
Preface		vii
Overview		ix
<b>CHAPTER-I</b>		
<b>INTRODUCTION</b>		
Budget profile	<b>1.1</b>	1
Application of resources of the State Government	<b>1.2</b>	1
Persistent savings	<b>1.3</b>	2
Funds transferred directly to the State implementing agencies	<b>1.4</b>	2
Grants-in-aid from Government of India	<b>1.5</b>	3
Planning and conduct of audit	<b>1.6</b>	3
Lack of responsiveness of Government to Inspection Reports	<b>1.7</b>	3
Government response to significant audit observations (draft paragraphs/reviews)	<b>1.8</b>	4
Follow-up on Audit Reports	<b>1.9</b>	5
Recoveries at the instance of Audit	<b>1.10</b>	6
Status of placement of Separate Audit Reports of Autonomous Bodies in the State Assembly	<b>1.11</b>	6
<b>CHAPTER-II</b>		
<b>PERFORMANCE AUDIT</b>		
<b>ENVIRONMENT AND FOREST DEPARTMENT</b>		
Working of the Bihar State Pollution Control Board	<b>2.1</b>	7
<b>SOCIAL WELFARE DEPARTMENT</b>		
Implementation of Rajiv Gandhi Scheme for Empowerment of Adolescent Girls (RGSEAG)-SABLA	<b>2.2</b>	26
<b>ART, CULTURE AND YOUTH DEPARTMENT</b>		
Working of the Directorates of Archaeology and Museum	<b>2.3</b>	40

DESCRIPTION	Reference to	
	Paragraphs	Page/ Remarks
<b>PUBLIC HEALTH AND ENGINEERING DEPARTMENT</b>		
Implementation of Total Sanitation Campaign/Nirmal Bharat Abhiyan in Bihar	<b>2.4</b>	51
<b>ROAD CONSTRUCTION DEPARTMENT</b>		
Construction and Maintenance of State Highways in Bihar	<b>2.5</b>	66
<b>HOME DEPARTMENT</b>		
Long Paragraph on ‘Crime and Criminal Tracking Network and System –CCTNS’	<b>2.6</b>	82
<b>URBAN DEVELOPMENT AND HOUSING DEPARTMENT</b>		
Long Paragraph on ‘Patna Municipal Corporation-Solid Waste Management and Approval of Building Plans’	<b>2.7</b>	91
<b>CHAPTER-III</b>		
<b>COMPLIANCE AUDIT</b>		
<b>GENERAL SECTOR</b>		
<b>PLANNING AND DEVELOPMENT DEPARTMENT</b>		
Excess expenditure on installation of solar street lights	<b>3.1</b>	101
<b>SOCIAL SECTOR</b>		
<b>HEALTH DEPARTMENT</b>		
Fraudulent Payment	<b>3.2</b>	102
Excess payment on irregular purchase of medicines	<b>3.3</b>	103
Irregularities in purchase of medicines	<b>3.4</b>	104
<b>EDUCATION DEPARTMENT</b>		
Defalcation of Sarva Shiksha Abhiyan funds	<b>3.5</b>	106
<b>PUBLIC HEALTH ENGINEERING DEPARTMENT</b>		
Loss to the Government	<b>3.6</b>	107
<b>URBAN DEVELOPMENT AND HOUSING DEPARTMENT</b>		
Idle expenditure	<b>3.7</b>	109

DESCRIPTION		Reference to	
		Paragraphs	Page/ Remarks
<b>ECONOMIC SECTOR</b>			
<b>WATER RESOURCES DEPARTMENT</b>			
Misappropriation of Government money		<b>3.8</b>	111
Loss to the Government due to short deduction of royalty		<b>3.9</b>	112
Excess payment		<b>3.10</b>	113
Wasteful expenditure		<b>3.11</b>	114
<b>ROAD CONSTRUCTION DEPARTMENT</b>			
Additional burden on State exchequer due to non-recovery of risk and cost amount		<b>3.12</b>	115
Unfruitful expenditure on idle plant and equipment		<b>3.13</b>	116
<b>INDUSTRY DEPARTMENT</b>			
Creation of additional liability due to non imposition of risk and cost amount		<b>3.14</b>	118
<b>APPENDICES</b>			
1.1	Statement showing Outstanding Inspection Reports/ Paragraphs	<b>1.7</b>	121
1.2	Statement showing various types of irregularities in outstanding paragraphs in Inspection Reports	<b>1.7</b>	122
1.3	Statement showing status of placement of Separate Audit Reports of Autonomous Bodies in the State Assembly	<b>1.11</b>	123
2.1.1	Statement showing loss of interest	<b>2.1.7</b>	125
2.1.2	Statement showing delay in submission of water consumption reports	<b>2.1.8.1</b>	125
2.1.3	Statement showing delay in assessment of water cess	<b>2.1.8.1</b>	126
2.1.4	Statement showing non-realization of arrears of water cess	<b>2.1.8.2</b>	127
2.1.5	Statement showing delay in issue of consents	<b>2.1.9.2</b>	128
2.1.6	Statement showing status of compliance criteria adopted by the municipal authorities of the State during 2009-14	<b>2.1.12.1</b>	130
2.1.7	Statement showing list of equipment available with Central Laboratory, Patna	<b>2.1.15.2</b>	131

DESCRIPTION		Reference to	
		Paragraphs	Page/ Remarks
2.1.8	Statement showing list of equipment required for Water/waste water analysis	<b>2.1.15.2</b>	132
2.1.9	Statement showing Sanctioned strength and men-in-position of the BSPCB	<b>2.1.17</b>	135
2.2.1	Statement regarding Take Home Ration given to over-aged girls during 2011-14	<b>2.2.6.2</b>	136
2.2.2	Statement regarding Take Home Ration given to school going girls in the age group of 11 to 14 years during 2011-14	<b>2.2.6.2</b>	137
2.2.3	Statement regarding funds allotted to CDPOs in excess of actual requirement during 2013-14	<b>2.2.7</b>	138
2.3.1	Statement showing list of Museums in Bihar	<b>2.3.2</b>	139
2.3.2	Statement of protected Monuments and Archaeological sites (test checked)	<b>2.3.5</b>	140
2.3.3	Budget provisions, expenditure and savings during 2009-14	<b>2.3.6</b>	141
2.3.4	Statement of surrender and lapsed amount during the year 2009-14	<b>2.3.6</b>	142
2.3.5	Statement of Excavation proposals denied by the ASI	<b>2.3.7.2</b>	143
2.3.6	Statement of protected Monuments and Archaeological sites in the State	<b>2.3.8</b>	144
2.3.7	Statement of Sanctioned strength and men-in-position	<b>2.3.10</b>	145
2.3.8	Statement of missing information in Antiquities Register	<b>2.3.11.1</b>	146
2.4.1	Organisational set-up for implementation of the TSC/NBA	<b>2.4.2</b>	147
2.4.2	Sanctioned Strength and men-in-position as on 31 March 2014	<b>2.4.6.1</b>	148
2.4.3	Statement showing target and achievement for APL and BPL households	<b>2.4.6.4</b>	149
2.4.4	Opening balance, released amount, total available funds, expenditure and unspent balance of 13 test checked Districts in the TSC/NBA	<b>2.4.7</b>	151
2.4.5	Details of matching State share required and released during 2010-14	<b>2.4.7</b>	153
2.4.6	Details of Nirmal Status of Gram Panchayats (GPs) as of March 2014	<b>2.4.9.1</b>	154

DESCRIPTION		Reference to	
		Paragraphs	Page/ Remarks
2.4.7	Status of Community Sanitation Centres in the test checked Districts as of March 2014	2.4.9.4	155
2.4.8	Statement showing details of targets and achievements of IEC activities	2.4.10	156
2.5.1	Organisational set-up of Road Construction Department	2.5.2	157
2.6.1	Statement showing names of police districts in the State	2.6.4	158
2.6.2	Statement showing overall timeline of CCTNS Project	2.6.4	159
2.7.1	Core Municipal Functions-Every Municipality shall provide on its own or arrange to provide through any agency the following core municipal services	2.7.1	160
2.7.2	Organisational set-up of Patna Municipal Corporation	2.7.2	161
2.7.3	Statement showing non-maintenance of records/documents in the Patna Municipal Corporation	2.7.3	162
2.7.4	Statement showing diversion from the SWM fund	2.7.4.1	163
2.7.5	Statement regarding two vehicles operated by the same driver in different circles during the same period	2.7.4.5	165
2.7.6A	Statement of vehicles not owned/hired by the PMC (New Capital Circle) but fuel was provided	2.7.4.5	166
2.7.6B	Statement showing registration number of vehicles provided by the PMC (New Capital Circle)	2.7.4.5	167
2.7.7	Statement regarding hiring/fuel charges paid to vehicles, though no loaders were engaged by PMC (New Capital Circle)	2.7.4.5	168
2.7.8	Statement showing excess payments against consumption of fuel in PMC (New Capital Circle)	2.7.4.5	169
2.7.9	Statement showing double payments for same vehicle on different serial numbers in the same bill in PMC (New Capital Circle)	2.7.4.5	170
2.7.10	Detail of vehicles to which excess quantity of fuel provided	2.7.4.5	171
2.7.11	Statement showing loss of mutation fee on lease land of PRDA due to sale of these lands to developers	2.7.5.1	172
2.7.12	Statement showing floor Area Ratio sanctioned by Architect in excess of admissible limit	2.7.5.2	173
2.7.13	Statement showing plan sanctioned for construction of buildings by the Architects where Road width were less	2.7.5.2	174

DESCRIPTION		Reference to	
		Paragraphs	Page/ Remarks
2.7.14	Statement showing plans sanctioned without ensuring required Set Back	2.7.5.2	176
2.7.15	Statement showing plans sanctioned without approval of Bihar State Housing Board on its lease land	2.7.5.2	177
3.1	Statement showing details of works allotted, completed and excess expenditure incurred thereagainst (As of	3.1	178
3.2	Statement showing bill number-wise payments made to Sadar and Sub-divisional Hospital	3.2	179
3.3	Statement showing excess payment to supplier on local purchase of medicines	3.3	181
3.4	Statement showing the details of amount of advance given to the firms and supply/adjustment thereagainst	3.4	182
3.5	Statement showing details of water supply schemes in Rural and Urban areas	3.6	184
3.6	Statement showing details of refundable amount of Excise Duty by the agencies entitled for ED exemption	3.6	187
3.7	Statement showing details of refundable amount of Excise Duty by agencies entitled for ED exemption	3.6	188
3.8	Statement showing details of refundable amount of Excise Duty by the agencies entitled for ED exemption	3.6	192
3.9	Statement showing expenditure on utilised and unutilised Cast Iron Pipes	3.7	194
3.10	Statement showing details of Challans	3.8	195
3.11	Statement showing short deduction of royalty	3.9	196
3.12	Statement showing excess payments on account of incorrect method of computation of Net work value in SBD agreement	3.10	199
3.13	Statement showing creation of additional liability	3.12	203