

Annexures

Annexure-1
Statement showing particulars of up to date paid up capital, loans outstanding and Manpower as on 31 March 2012 in respect of
Government companies and Statutory corporations
(Referred to in paragraph 1.7)

(Figures in column 5 (a) to 6(d) are ₹ in crore)

Sl No	Sector and name of the company	Name of the Department	Month and year of incorporation	Paid up capitals			Loans* outstanding at the close of 2011-12			Debt Equity ratio for 2011-12 (previous year)	Manpower (No of employees as on 31-03-2012)		
				State Government	Central Government	Others	State Government	Central Government	Others			Total	
(1)	(2)	(3)	(4)	5(a)	5(b)	5(c)	5(d)	6(a)	6(b)	6(c)	6(d)	(7)	(8)
A	Working Government companies												
	AGRICULTURE AND ALLIED												
1	Uttar Pradesh (Madhya) Ganna Beej Evam Vikas Nigam Limited	Sugar Industry & Cane Development	27.08.1975	0.15	-	0.10	0.25	-	-	-	-	-	17
2	Uttar Pradesh (Paschim) Ganna Beej Evam Vikas Nigam Limited	Sugar Industry & Cane Development	27.08.1975	0.51	-	0.14	0.65	-	-	-	-	-	08
3	Uttar Pradesh Beej Vikas Nigam Limited	Agriculture	15.02.2002	1.25	-	0.67	1.92	-	-	-	-	-	370
4	Uttar Pradesh Bhumi Sudhar Nigam	Agriculture	30.03.1978	1.50	-	-	1.50	-	-	-	-	-	853
5	Uttar Pradesh Matsya Vikas Nigam Limited	Matysa & Pashudhan	27.10.1979	1.07	-	-	1.07	-	-	-	-	-	216
6	U.P. Projects Corporation Limited	Irrigation	26.05.1976	5.40	1.00	-	6.40	-	-	-	-	-	618
7	Uttar Pradesh State Agro Industrial Corporation Limited	Agriculture	29.03.1967	46.78	-	-	46.78	5.00	-	-	5.00	0.11:1 (0.11:1)	829
	Sector wise total			56.66	1.00	0.91	58.57	5.00	-	-	5.00	0.09:1 (0.09:1)	2911
	FINANCING												
8	The Pradeshia Industrial and Investment Corporation of UP Limited	Industrial Development	29.03.1972	110.58	-	25.00	135.58	155.11	-	-	155.11	1.14:1 (1.09:1)	240
9	Uttar Pradesh Alpsankhyak Vitya Avam Vikas Nigam Limited	Alpsankhyak kalyan & Waqf	17.11.1984	30.00	-	-	30.00	7.52	-	82.68	90.20	3.01:1 (3.01:1)	--
10	Uttar Pradesh Pichhara Varg Vitta Evam Vikas Nigam Limited	Pichhara Varg Kalyan	26.04.1991	12.23	-	-	12.23	-	-	36.72	36.72	3:1 2.12:1	17
11	Uttar Pradesh Scheduled Castes Finance and Development Corporation Limited	Samaj Kalyan	25.03.1975	122.00	-	107.18	229.18	-	-	69.60	69.60	0.30:1 (0.33:1)	420
12	Uttar Pradesh State Industrial Development Corporation Limited	Industrial Development	29.03.1961	24.08	-	-	24.08	1.98	-	-	1.98	0.08:1 (0.08:1)	967
	Sector wise total			298.89	-	132.18	431.07	164.61	-	189.00	353.61	0.82:1 (0.82:1)	1644

(1)	(2)	(3)	(4)	5(a)	5(b)	5(c)	5(d)	6(a)	6(b)	6(c)	6(d)	(7)	(8)
	INFRASTRUCTURE												
13	Uttar Pradesh Police Avas Nigam Limited	Home	27.03.1987	3.00	-	-	3.00	-	-	-	-	-	154
14	Uttar Pradesh Rajkiya Nirman Nigam Limited	Public Works Department	01.05.1975	1.00	-	-	1.00	-	-	-	-	-	3545
15	Uttar Pradesh Samaj Kalyan Nirman Nigam Limited	Samaj Kalyan	25.06.1976	0.15	-	-	0.15	-	-	-	-	-	581
16	Uttar Pradesh State Bridge Corporation Limited	Public works Department	09.01.1973	15.00	-	-	15.00	1.25	-	-	1.25	0.08:1 (0.17:1)	5858
	Sector wise total			19.15	-	-	19.15	1.25	-	-	1.25	0.07:1 (0.13:1)	10138
	MANUFACTURE												
17	Almora Magnesite Limited(619-B Company)		27.08.1971	-	-	2.00	2.00	-	-	0.26	0.26	0.13:1 (0.16:1)	415
18	Shreeron India Limited (Subsidiary of Uttar Pradesh Electronics Corporation Limited)	Electronics & information Technology	10.02.1979	-	-	7.22	7.22	-	-	2.63	2.63	0.36:1 (0.36:1)	10
19	UPSIC Potteries Limited (Subsidiary of Uttar Pradesh Small Industries Corporation Limited)	Laghu Udyog	27.04.1976	-	-	0.76	0.76	0.86	-	1.93	2.79	3.67:1 (3.55:1)	07
20	Uptron India Limited (Subsidiary of Uttar Pradesh Electronics Corporation Limited)	Electronics & information Technology	18.10.1974	-	-	57.93	57.93	-	-	9.70	9.70	0.17:1 (0.17:1)	-
21	Uptron Powertronics Ltd. (subsidiary of Uttar Pradesh Electronics Corporation)	Electronics and information technology	10.04.1977	-	-	4.07	4.07	-	-	5.67	5.67	1.39:1 (1.39:1)	28
22	Uttar Pradesh Drugs and Pharmaceuticals Limited	Health	-	1.10	-	-	1.10	-	-	-	-	-	290
23	Uttar Pradesh Electronics Corporation Limited.	Electronics and information technology	20.03.1974	91.54	-	-	91.54	113.16	-	-	113.16	1.24:1 (1.24:1)	35
24	Uttar Pradesh Rajiya Chini Avam Gamma Vikas Nigam Limited	Sugar Industry and cane Development	16.05.2002	553.03	-	327.00	880.03	-	-	-	-	-	20
25	Uttar Pradesh Small Industries Corporation Limited	Laghu Udhyyog	01.06.1958	5.96	-	-	5.96	6.32	-	3.92	10.24	1.72:1 (1.72:1)	-
26	Uttar Pradesh State Handloom Corporation Limited	Hathkargha evam vastra Udhyyog	09.01.1973	36.44	10.63	-	47.07	106.05	-	5.00	111.05	2.36:1 (2.36:1)	308
27	Uttar Pradesh State Leather Development and Marketing Corporation Limited	Niryat Protshahan	12.02.1974	5.74	-	-	5.74	1.91	-	-	1.91	0.33:1 (0.33:1)	2
28	Uttar Pradesh State Spinning Company Limited	Hathkargha evam vastra Udhyyog	20.08.1976	93.24	-	-	93.24	65.31	-	-	65.31	0.70:1 (0.49:1)	2479
29	Uttar Pradesh State Sugar Corporation Limited	Sugar Industry & Cane Development	26.03.1971	1103.72	-	-	1103.72	-	-	-	-	(-)	218
30	Uttar Pradesh State Yarn Company Limited (Subsidiary of Uttar Pradesh State Textile Corporation Limited)	Hathkargha evam vastra Udhyyog	20.08.1974	53.67	-	-	53.67	49.14	-	-	49.14	0.92:1 (0.78:1)	587
	Sector wise total			1944.44	10.63	398.98	2354.05	342.75	-	29.11	371.86	0.16:1 (0.15:1)	4399

(1)	(2)	(3)	(4)	5(a)	5(b)	5(c)	5(d)	6(a)	6(b)	6(c)	6(d)	(7)	(8)
31	POWER Dakshinanchal Vidyut Vitaran Nigam Limited (Subsidiary of Uttar Pradesh Power Corporation Limited)	Energy	1.05.2003	-	-	3264.14	3264.14	77.98	-	1056.35	1134.33	0.35:1 (0.24:1)	5243
32	Kampur Electricity Supply Company Limited	Energy	21.07.1999	-	-	163.15	163.15	4.04	-	273.75	277.79	1.70:1 (1.62:1)	1881
33	Madhyanchal Vidyut Vitaran Nigam Limited (Subsidiary of Uttar Pradesh Power Corporation Limited)	Energy	01.05.2003	-	-	2984.61	2984.61	-	-	663.27	663.27	0.22:1 (0.29:1)	8366
34	Paschimanchal Vidyut Vitaran Nigam Limited (Subsidiary of Uttar Pradesh Power Corporation Limited)	Energy	01.05.2003	-	-	2095.18	2095.18	-	-	802.19	802.19	0.38:1 (0.25:1)	7861
35.	Purvanchal Vidyut Vitaran Nigam Limited (Subsidiary of Uttar Pradesh Power Corporation Limited)	Energy	01.05.2003	-	-	3953.59	3953.59	-	-	109.93	109.93	0.03:1 (0.05:1)	9507
36	Sonebhadra Power Generation Company Limited	Energy	14.02.2007	-	-	0.07	0.07	-	-	-	-	--	-
37.	UCM Coal Company Limited	Energy	16.02.2008	-	-	0.16	0.16	0.25	-	0.25	0.50	3.13:1 (3.13:1)	-
38.	UPSIDC Power Company Limited (Subsidiary of Uttar Pradesh State Industrial Development Corporation Limited)	Energy	11.04.2000	-	-	0.05	0.05	-	-	-	-	-	-
39.	Uttar Pradesh Jal Vidyut Nigam Limited	Energy	15.04.1985	431.74	-	-	431.74	64.65	-	85.21	149.86	0.35:1 (0.35:1)	638
40.	Uttar Pradesh Power Corporation Limited	Energy	30.11.1999	33514.44	-	-	33514.44	-	-	17056.49	17056.49	0.51:1 (0.33:1)	-
41.	Uttar Pradesh Power Transmission Corporation Limited (Subsidiary of Uttar Pradesh Power Corporation Limited)	Energy	13.07.2006	4437.51	-	5.00	4442.51	-	-	4791.70	4791.70	1.08:1 (0.58:1)	5852
42.	Uttar Pradesh Rajya Vidyut Utpadan Nigam Limited	Energy	22.08.1980	6857.76	-	-	6857.76	219.09	-	8473.81	8692.90	1.27:1 (1.19:1)	8650
43.	Western U.P. Power Transmission Company Limited	Energy	11.09.2009	-	-	-	-	-	-	-	-	-	-
44.	South East U.P. Power Transmission Company Limited	Energy	11.09.2009	-	-	0.05	0.05	-	-	-	-	-	-
45.	Jawahar Vidyut Utpadan Nigam Limited	Energy	04.09.2009	-	-	0.05	0.05	-	-	-	-	-	1
	Sector wise total			45241.45	-	12466.05	57707.50	366.01	-	33312.95	33678.96	0.58:1 (0.43:1)	47999
46	SERVICE Abhyaranya Paripath Paryatan Limited	Tourism	20.02.2009	-	-	0.05	0.05	-	-	-	-	-	-

(1)	(2)	(3)	(4)	5(a)	5(b)	5(c)	5(d)	6(a)	6(b)	6(c)	6(d)	(7)	(8)
47	Adyavasai Paripath Paryatan Limited	Tourism	20.02.2009	-	-	0.05	0.05	-	-	-	-	-	-
48	Awadh Paryatan Limited	Tourism	20.02.2009	-	-	0.05	0.05	-	-	-	-	-	-
49	Bithpur Paripath Paryatan Ltd.	Tourism	20.02.2009	-	-	0.05	0.05	-	-	-	-	-	-
50	Braj Darshan Paripath Paryatan Limited	Tourism	20.02.2009	-	-	0.05	0.05	-	-	-	-	-	-
51	Braj Paripath Paryatan Limited	Tourism	20.02.2009	-	-	0.05	0.05	-	-	-	-	-	-
52	Bundelkhand Paripath Paryatan Limited	Tourism	20.02.2009	-	-	0.05	0.05	-	-	-	-	-	-
53	Ganga Saryu Paripath Paryatan Limited	Tourism	20.02.2009	-	-	0.05	0.05	-	-	-	-	-	-
54	Garhmukteshwar Paryatan Limited	Tourism	20.02.2009	-	-	0.05	0.05	-	-	-	-	-	-
55	Gyanodaya Paripath Paryatan Limited	Tourism	20.02.2009	-	-	0.05	0.05	-	-	-	-	-	-
56	Hasinapur Paripath Paryatan Limited	Tourism	20.02.2009	-	-	0.05	0.05	-	-	-	-	-	-
57	Hindon Paryatan Limited	Tourism	20.02.2009	-	-	0.05	0.05	-	-	-	-	-	-
58	Madhyanchal Paripath Paryatan Limited	Tourism	20.02.2009	-	-	0.05	0.05	-	-	-	-	-	-
59	Paanchal Paripath Paryatan Limited	Tourism	20.02.2009	-	-	0.05	0.05	-	-	-	-	-	-
60	Pachimanchal Paripath Paryatan Limited	Tourism	20.02.2009	-	-	0.05	0.05	-	-	-	-	-	-
61	Sangam Paripath Paryatan Limited	Tourism	20.02.2009	-	-	0.05	0.05	-	-	-	-	-	-
62	Satyadarshan Paripath Paryatan Limited	Tourism	20.02.2009	-	-	0.05	0.05	-	-	-	-	-	-
63	Shajhanpur Paripath Paryatan Limited	Tourism	20.02.2009	-	-	0.05	0.05	-	-	-	-	-	-
64	Siddhartha Paripath Paryatan Limited	Tourism	20.02.2009	-	-	0.05	0.05	-	-	-	-	-	-
65	Taj Shilp Paryatan Limited	Tourism	20.02.2009	-	-	0.05	0.05	-	-	-	-	-	-
66	Taj Virasat Paripath Paryatan Limited	Tourism	20.02.2009	-	-	0.05	0.05	-	-	-	-	-	-
67	Triveni Paripath Paryatan Limited	Tourism	20.02.2009	-	-	0.05	0.05	-	-	-	-	-	-
68	Uttar Pradesh Development Systems Corporation Limited	Electronics & information Technology	15.03.1977	1.00	-	-	1.00	--	-	-	-	-	90
69	Uttar Pradesh Export Corporation Limited	Niryat Protsahan	20.01.1996	6.34	0.90	-	7.24	7.44	-	-	7.44	1.03:1 (1.03:1)	142
70	Uttar Pradesh Food and Essential Commodities Corporation Limited	Food & Civil Supplies	22.10.1974	5.50	-	-	5.50	13.47	-	-	13.47	2.45:1 (2.45:1)	770
71	Uttar Pradesh State Tourism Development Corporation Limited	Tourism	05.08.1974	18.75	-	-	18.75	2.37	-	-	2.37	0.13:1 (0.13:1)	569
	Sector wise total			31.59	0.90	1.10	33.59	23.28	-	-	23.28	0.69:1 (0.69:1)	1571

(1)	(2)	(3)	(4)	5(a)	5(b)	5(c)	5(d)	6(a)	6(b)	6(c)	6(d)	(7)	(8)
	MISCELLANEOUS												
72	Uttar Pradesh Mahila Kalyan Nigam Limited	Mahila Kalyan	17.03.1988	4.71	0.48	-	5.19	-	-	-	-	-	22
73	Uttar Pradesh Purva Sainik Kalyan Nigam Limited	Samaj Kalyan	23.05.1989	0.43	-	-	0.43	-	-	-	-	-	130
74	Uttar Pradesh Waqf Vikas Nigam Limited	Waqf & Alpsankhyak Transport	27.04.1987	7.50	-	-	7.50	-	-	-	-	-	24
75	Lucknow City Transport Services Limited	Transport	01.02.2010	-	-	-	-	-	-	-	-	-	-
76	Meerut City Transport Services Limited	Transport	23.06.2010	-	-	-	-	-	-	-	-	-	-
77	Allahabad City Transport Services Limited	Transport	27.04.2010	-	-	-	-	-	-	-	-	-	-
78	Agra Mathura City Transport Services Limited	Transport	08.07.2010	-	-	-	-	-	-	-	-	-	-
	Sector wise total			12.64	0.48	12999.22	13.12	902.90	-	33531.06	34433.96	0.57:1 (0.42:1)	176
	Total A (All sector wise working Government companies)			47604.82	13.01	12999.22	60617.05	902.90	-	33531.06	34433.96	0.57:1 (0.42:1)	68838
B	Working Statutory Corporations												
	AGRICULTURE & ALLIED												
1	Uttar Pradesh State Warehousing Corporation	Cooperative	19.03.1958	7.79	5.58	-	13.37	-	-	-	-	-	1205
	Sector wise total			7.79	5.58	-	13.37	-	-	-	-	-	1205
	FINANCING												
2	Uttar Pradesh Financial Corporation	Industrial Development	01.11.1954	114.51	-	64.78	179.29	271.43	-	376.59	648.02	3.61:1 (3.39:1)	697
	Sector wise total			114.51	-	64.78	179.29	271.43	-	376.59	648.02	3.61:1 (3.39:1)	697
	INFRASTRUCTURE												
3	Uttar Pradesh Avas Evam Vikas Parishad	Housing and Urban Planning	03.04.1966	-	-	-	-	-	-	-	-	-	3700
4	Uttar Pradesh Jal Nigam	Urban Development	06.06.1975	-	-	-	-	98.68	-	-	98.68	-	-
	Sector wise total			-	-	-	-	98.68	-	-	98.68	-	3700
	SERVICE												
5	Uttar Pradesh State Road Transport Corporation	Transport	01.06.1972	348.63	60.01	-	408.64	-	-	270.31	270.31	0.66:1 (0.24:1)	-
6	Uttar Pradesh Government Employees Welfare Corporation	Food & Civil Supplies	05.05.1965	-	-	-	-	9.51	-	-	9.51	-	889
	Sector Wise total			348.63	60.01	-	408.64	9.51	-	270.31	279.82	0.68:1 (0.27:1)	889
	Miscellaneous												
7	Uttar Pradesh Forest Corporation**	Forest	25.11.1974	-	-	-	-	-	-	13.50	13.50	-	2531
	Sector Wise total			470.93	65.59	64.78	601.30	379.62	-	13.50	13.50	1.73:1 (1.51:1)	9022
	Total B (All Sector wise working statutory corporations)			48075.75	78.60	13064.00	61218.35	1282.52	-	34191.46	35473.98	0.58:1 (0.43:1)	77860

(1)	(2)	(3)	(4)	5(a)	5(b)	5(c)	5(d)	6(a)	6(b)	6(c)	6(d)	(7)	(8)
C	Non working Companies												
	AGRICULTURE & ALLIED												
1	Command Area Poultry Development Corporation Limited (619-B company)	Matsya & Pashudhan		-	-	0.24	0.24						
2	Uttar Pradesh (Poorva) Ganna Beej Evam Vikas Nigam Limited	Sugar Industry & Cane development	27.08.1975	0.23	-	0.08	0.31	1.69	-	-	1.69	5.45:1 (5.45:1)	19
3	Uttar Pradesh (Rohilkhand Tarai) Ganna Beej Evam Vikas Nigam Limited	Sugar Industry & Cane development	27.08.1975	0.38	-	0.33	0.71	6.55	-	-	6.55	9.23:1 (9.23:1)	-
4	Uttar Pradesh Pashudhan Udyog Nigam Limited	Matsya & Pashudhan	05.03.1975	2.10	0.63	-	2.73	0.71	-	-	0.71	0.26:1 (0.26:1)	-
5	Uttar Pradesh Poultry and Livestock Specialties Limited	Matsya & Pashudhan	07.12.1974	1.66	1.28	-	2.94	1.10	-	-	1.10	0.37:1 (0.37:1)	-
6	Uttar Pradesh State Horticultural Produce Marketing & Processing Corporation Limited	Food Processing	06.04.1977	6.41	-	0.64	7.05	1.22	-	-	1.22	0.17:1 (0.17:1)	330
	Sector wise Total			10.78	1.91	1.29	13.98	11.27	-	-	11.27	0.81:1 (0.81:1)	349
	FINANCING												
7	Uplase Financial Services Limited (Subsidiary of Uttar Pradesh Electronics Corporation Limited)	Electronics & Information Technology	05.01.1988	-	-	1.06	1.06	--	-	4.15	4.15	3.92:1 (3.92:1)	--
8	Uttar Pradesh Panchayati Raj Vitta Evam Vikas Nigam Limited	Panchayati Raj	24.04.1973	0.78	-	0.66	1.44	--	-	-	-	-	52
	Sector Wise Total			0.78	-	1.72	2.50	-	-	4.15	4.15	1.66:1 (1.66:1)	52
	INFRASTRUCTURE												
9	Uttar Pradesh Cement Corporation Limited	Industrial Development	19.03.1972	66.28	-	-	66.28	124.77	-	-	124.77	1.88:1 (1.88:1)	-
10	Uttar Pradesh State Mineral Development Corporation Limited	Industrial Development	23.03.1974	59.43	-	-	59.43	18.24	-	1.50	19.74	0.33:1 (0.33:1)	-
11	Vindhyachal Abrasives Limited (Subsidiary of Uttar Pradesh State Mineral Development Corporation Limited)	Industrial Development	05.12.1985	-	-	0.08	0.08	-	-	0.84	0.84	10.50:1 (10.50:1)	-
	Sector wise Total			125.71	-	0.08	125.79	143.01	-	2.34	145.35	1.16:1 (1.16:1)	-
	MANUFACTURE												
12	Auto Tractors Limited	Industrial Development	28.12.1972	5.63	-	1.87	7.50	0.38	-	-	0.38	0.05:1 (0.05:1)	-
13	Bhadoli Woollens Limited (Subsidiary of Uttar Pradesh State Textile Corporation Ltd.)	HatKargha & Vastra Udyog	14.06.1976	-	-	3.76	3.76	-	-	-	-	-	-
14	Chhata Sugar Company Limited (Subsidiary of Uttar Pradesh State Sugar Corporation Limited)	Sugar Industry and Cane Development	18.04.1975	-	-	81.38	81.38	-	4.00	15.65	19.65	0.24:1 (0.05:1)	07

(1)	(2)	(3)	(4)	5(a)	5(b)	5(c)	5(d)	6(a)	6(b)	6(c)	6(d)	(7)	(8)
15	Continental Float Glass Limited	Industrial Development	12.04.1985	-	-	46.24	46.24	-	-	138.85	138.85	3.00:1 (3.00:1)	-
16	Electronics and Computers (India) Limited (619-B Company)												
17	Ghatampur Sugar Company Limited (Subsidiary of Uttar Pradesh State Sugar Corporation Limited)	Sugar Industry and Cane Development	30.05.1986	-	-	147.72	147.72	-	-	10.92	10.92	0.07:1 (0.12:1)	18
18	Kanpur Components Limited (Subsidiary of Uttar Pradesh Electronics Corporation Ltd.)	Electronic & Information Technology	31.03.1978	-	-	0.05	0.05	-	-	-	-	-	-
19	Nandigani-Sihori Sugar Company Limited (Subsidiary of Uttar Pradesh State Sugar Corporation Limited)	Sugar Industry and Cane Development	18.04.1975	-	-	34.04	34.04	-	-	7.69	7.69	0.23:1 (0.11:1)	80
20	Steel and Fasteners Limited (619-B Company)		-	-	-	1.90	1.90	-	-	-	-	-	-
21	The Indian Turpentine and Rosin Company Limited	Industry Development	22.02.1974	0.19	-	0.03	0.22	5.33	-	1.88	7.21	32.77:1 (32.77:1)	-
22	Upton Sempaack Limited (Subsidiary of Uttar Pradesh Electronics Corporation Limited)	Electronic & Information Technology	23.05.1977	-	-	0.03	0.03	-	-	0.03	0.03	1:1 (1:1)	-
23	Uttar Pradesh Abscott Private Limited (Subsidiary of Uttar Pradesh Small Industries Corporation Limited)	Laghu Udyog	18.6.1972	-	-	0.05	0.05	-	-	-	-	-	-
24	Uttar Pradesh Carbide and Chemicals Limited (Subsidiary of Uttar Pradesh State Mineral Development Corporation Limited)	Industrial Development	23.04.1979	-	-	6.59	6.59	11.02	-	-	11.02	1.67:1 (1.67:1)	-
25	Uttar Pradesh Instruments Limited (Subsidiary of Uttar Pradesh State Industrial Development Corporation Limited)	Industrial Development	01.01.1975	0.09	-	1.93	2.02	5.55	-	11.49	17.04	8.44:1 (8.44:1)	259
26	Uttar Pradesh Plant Protection Appliances (Private) Limited (Subsidiary of Uttar Pradesh Small Industries Corporation Limited)	Laghu Udyog	28.6.1972	-	-	0.02	0.02	-	-	-	-	(1.50:1)	-
27	Uttar Pradesh State Brassware Corporation Limited	Niryat Protsahan	12.02.1974	5.28	0.10	-	5.38	1.94	-	-	1.94	0.36:1 (0.36:1)	-
28	Uttar Pradesh State Textile Corporation Limited	HatKargha & Vastra Udyog	02.12.1969	197.10	-	-	197.10	95.78	-	-	95.78	0.49:1 (0.47:1)	-
29	Uttar Pradesh Tyre and Tubes Limited (Subsidiary of Uttar Pradesh State Industrial Development Corporation Limited)	Industrial Development	14.01.1976	-	-	1.83	1.83	-	-	-	-	-	-
	Sector Wise Total			208.29	0.10	327.44	535.83	120.00	4.00	186.51	310.51	0.58:1 (1:1)	364

(1)	(2)	(3)	(4)	5(a)	5(b)	5(c)	5(d)	6(a)	6(b)	6(c)	6(d)	(7)	(8)
	SERVICE SECTOR												
30	Agra Mandal Vikas Nigam Limited	Bhumi Vikas & Jal Sansadhan	31.03.1976	1.00	-	-	1.00	0.05	-	-	0.05	0.05:1 (0.05:1)	
31	Allahabad Mandal Vikas Nigam Limited	Bhumi Vikas & Jal Sansadhan	31.03.1976	0.67	-	-	0.67	0.66	-	-	0.66	0.99:1 (0.99:1)	
32	Bareilly Mandal Vikas Nigam Limited	Bhumi Vikas & Jal Sansadhan	31.03.1976	1.25	-	-	1.25	-	-	-	--	-	
33	Bundelkhand Concrete Structural Limited (Subsidiary of Uttar Pradesh Bundelkhand Vikas Nigam Limited)	Bhumi Vikas & Jal Sansadhan	1986-87	-	-	0.01	0.01	-	-	-	-	-	
34	Gandak Smadesh Kshetriya Vikas Nigam Limited	Bhumi Vikas & Jal Sansadhan	1976-77	0.46	-	-	0.46	-	-	--	-	-	
35	Gorakhpur Mandal Vikas Nigam Limited	Bhumi Vikas & Jal Sansadhan	31.03.1976	0.94	-	0.32	1.26	0.88	-	-	0.88	0.70:1 (0.70:1)	
36	Lucknow Mandaliya Vikas Nigam Limited	Bhumi Vikas & Jal Sansadhan	31.03.1976	0.70	-	-	0.70	0.86	-	-	0.86	1.23:1 (1.23:1)	
37	Meerut Mandal Vikas Nigam Limited	Bhumi Vikas & Jal Sansadhan	31.03.1976	1.00	-	-	1.00	-	-	-	-	(-)	
38	Moradabad Mandal Vikas Nigam Limited	Bhumi Vikas & Jal Sansadhan	30.03.1978	0.25	-	-	0.25	0.65	-	-	0.65	2.60:1 (2.60:1)	
39	Tarai Anusuchit Janjati Vikas Nigam Limited	Samaj Kalyan	2.08.1975	0.45	-	-	0.45	1.25	-	-	1.25	2.78:1 (2.78:1)	
40	Uttar Pradesh Bundelkhand Vikas Nigam Limited	Bhumi Vikas & Jal Sansadhan	30.03.1971	1.23	-	-	1.23	0.05	-	-	0.05	0.04:1 (0.04:1)	1
41	Uttar Pradesh Chalchitra Nigam Limited	Tax and Institutional Finance	10.09.1975	8.18	-	-	8.18	2.47	-	-	2.47	0.30:1 (0.30:1)	
42	Uttar Pradesh Poorvanchal Vikas Nigam Limited	Bhumi Vikas & Jal Sansadhan	30.03.1971	1.30	-	-	1.30	0.35	-	-	0.35	0.27:1 (0.27:1)	
43	Varanasi Mandal Vikas Nigam Limited	Bhumi Vikas & Jal Sansadhan	31.03.1976	0.70	-	-	0.70	0.30	-	-	0.30	0.43:1 (0.43:1)	
	Sector wise Total			18.13	-	0.33	18.46	7.52	-	-	7.52	0.41:1 (0.41:1)	1
	Total C (All sector wise non working companies)			363.69	2.01	330.86	696.56	281.80	4.00	193.00	478.80	0.69:1 (1.02:1)	765
	Grand Total (A+B+C)			48439.44	80.61	13394.86	61914.91	1564.32	4.00	34384.46	35952.78	0.58:1 (0.43:1)	78626

Note 1: Above includes Section 619-B companies at Sr. no- A-17, C-1, 16, and 20.

Note 2: Companies at SI No. A-46 to A-67 are subsidiaries of Uttar Pradesh State Tourism Development Corporation Limited.

\$ Paid up capital includes share application money. * Loans outstanding at the close of 2011-12 represents long term loans only. ** The audit of Accounts for the periods 1999-2000 to 2007-08 was conducted by Local Audit and Audit for the year 2008-09 was entrusted to this Office as per order of the Forest Corporation dated 31 July 2010 after doing necessary amendment in the UP Forest Corporation Act, 1974.

Annexure-2

**Summarised financial results of Government companies and Statutory corporations for the latest year for which accounts were finalised
(Referred to in paragraph 1.13, 1.21 and 1.33)**

Sl No	Sector and name of the company	Period of accounts	Year in which finalised	Net Profit/Loss			Turnover	Impact of Account comments#	Paid up Capital	Accumulated Profit (+)/ Loss (-)	Capital employed@	Return on capital employed\$	Percentage return on capital employed	
				Net Profit/loss before interest and depreciation	Interest	Depreciation								Net profit/loss
(1)	(2)	(3)	(4)	5(a)	5(b)	5(c)	(5(d))	(6)	(7)	(8)	(9)	(10)	(11)	(12)
A	Working Government companies													
	AGRICULTURE AND ALLIED													
1	Uttar Pradesh (Madhya) Ganna Beej Evam Vikas Nigam Limited.	2010-11	2011-12	(-) 0.07	-	-	(-)0.07	0.20	(IL) 0.10	0.25	(-) 0.71	2.29	(-) 0.07	-
2	Uttar Pradesh (Paschim) Ganna Beej Evam Vikas Nigam Limited	2011-12	2012-13	0.38	-	-	0.38	0.71	-	0.65	0.83	1.52	0.38	25.00
3	Uttar Pradesh Beej Vikas Nigam Limited	2008-09	2011-12	28.91	5.47	0.71	22.73	269.19	-	1.92	53.36	88.37	28.20	31.91
4	Uttar Pradesh Bhumii Sudhar Nigam	2008-09	2012-13	(-) 0.03	-	0.10	(-) 0.13	1.86	-	1.50	0.23	23.59	(-) 0.13	-
5	Uttar Pradesh Matsya Vikas Nigam Limited	2006-07	2011-12	0.37	-	0.11	0.26	3.54	(DP) 0.78	1.07	-	4.90	0.26	5.31
6	U.P. Projects Corporation Limited	2009-10	2011-12	18.98	-	0.39	18.59	733.98	(IP) 29.31	6.40	68.02	74.49	18.59	24.96
7	Uttar Pradesh State Agro Industrial Corporation Limited	2007-08	2010-11	14.13	8.79	0.10	5.24	383.90	-	40.00	(-)51.68	73.68	14.03	19.04
	Sector wise total FINANCING			62.67	14.26	1.41	47.00	1393.38	-	51.79	70.05	268.84	61.26	22.79
8	The Pradeshia Industrial and Investment Corporation of UP Limited	2010-11	2011-12	11.10	6.94	0.46	3.70	37.27	(DP) 0.56	135.58	(-) 363.94	315.83	10.64	3.37
9	Uttar Pradesh Alpsankhyak Avam Vikas Nigam Limited	1995-96	2010-11	0.70	0.45	0.01	0.24	1.14	(DP) 5.29	14.23	0.12	20.94	0.69	3.30
10	Uttar Pradesh Pichhara Varg Vitta Evam Vikas Nigam Limited	2009-10	2012-13	2.07	1.67	0.01	0.39	2.43	-	12.23	7.17	66.10	2.06	3.12
11	Uttar Pradesh Scheduled Castes Finance and Development Corporation Limited	2008-09	2011-12	15.77	2.14	0.05	13.58	23.53	(DP) 0.13	102.83	56.97	313.85	15.72	5.01
12	Uttar Pradesh State Industrial Development Corporation Limited	2008-09	2011-12	73.92	-	5.58	68.34	113.34	(DP) 3.40	24.08	-	218.25	68.34	31.31
	Sector wise total			103.56	11.20	6.11	86.25	177.71	-	288.95	(-) 299.68	934.97	97.45	10.42

(1)	(2)	(3)	(4)	5(a)	5(b)	5(c)	5(d)	(6)	(7)	(8)	(9)	(10)	(11)	(12)
	INFRASTRUCTURE													
13	Uttar Pradesh Police Avas Nigam Limited	2010-11	2011-12	0.56	-	0.14	0.42	77.54	(DP) 2.65	3.00	13.26	16.16	0.42	2.60
14	Uttar Pradesh Rajkiya Nirman Nigam Limited	2009-10	2012-13	231.75	0.60	5.69	225.46	3670.58	(DP) 8.68	1.00	412.35	431.88	226.06	52.34
15	Uttar Pradesh Samaj Kalyan Nirman Nigam Limited	2010-11	2011-12	24.59	-	0.76	23.83	578.25	-	0.15	49.65	49.69	23.83	47.96
16	Uttar Pradesh State Bridge Corporation Limited	2009-10	2011-12	44.30	1.56	3.80	38.94	800.04	(DP) 13.14	15.00	68.37	95.03	40.50	42.62
	Sector wise total			301.20	2.16	10.39	288.65	5126.41	-	19.15	543.63	592.76	290.81	49.06
	MANUFACTURE													
17	Almora Magnesite Limited (619-B Company)	2011-12	2012-13	1.33	0.09	0.29	0.95	31.93	-	2.00	1.75	6.15	1.04	16.91
18.	Shreeron India Limited (Subsidiary of Uttar Pradesh Electronics Corporation Limited)	2011-12	2012-13	2.11	0.15	0.52	1.44	30.57	(DP) 2.44	7.22	1.57	12.28	1.59	12.95
19	UPSIC Potteries Limited (Subsidiary of Uttar Pradesh Small Industries Corporation Limited)	1996-97	2011-12	(-0.14)	0.59	0.02	(-0.75)	-	-	0.76	(-0.65)	(-0.23)	(-0.16)	-
20	Uptron India Limited (Subsidiary of Uttar Pradesh Electronics Corporation Limited)	1995-96	1997-98	(-1.99)	28.06	2.07	(-32.12)	97.15	-	53.16	(-196.73)	52.06	(-4.06)	-
21	Uptron Powertronics Ltd. (Subsidiary of Uttar Pradesh Electronics Corporation Limited)	2011-12	2012-13	1.50	-	0.65	0.85	25.25	(DP) 0.56	4.07	(-3.32)	8.42	0.85	10.10
22	Uttar Pradesh Drugs and Pharmaceuticals Limited	2008-09	2010-11	(-2.18)	0.21	0.25	(-2.64)	21.40	-	1.10	(-18.06)	(-5.49)	(-2.43)	-
23	Uttar Pradesh Electronics Corporation Limited.	2010-11	2011-12	0.88	-	0.10	0.78	36.30	-	87.66	1.14	124.19	0.78	0.63
24	Uttar Pradesh Rajya Chini Avam Ganna Vikas Nigam Limited	2009-10	2011-12	(-13.55)	0.01	0.25	(-13.81)	5.72	(IL) 16.89	8.44	(-862.84)	65.78	(-13.80)	-
25	Uttar Pradesh Small Industries Corporation Limited)	2003-04	2011-12	1.02	0.54	0.84	(-0.36)	15.75	(DL) 6.67	5.96	(-17.06)	8.96	0.18	2.01
26	Uttar Pradesh State Handloom Corporation Limited	1996-97	2010-11	(-7.88)	1.38	0.42	(-9.68)	29.18	(DP) 0.01	24.38	(-47.83)	31.59	(-8.30)	-
27	Uttar Pradesh State Leather Development and Marketing Corporation Limited	2000-01	2002-03	0.42	0.05	0.11	0.26	3.60	-	573.94	(-6.85)	4.81	0.31	6.44
28	Uttar Pradesh State Spinning Company Limited	2010-11	2011-12	0.60	1.50	1.25	(-2.15)	102.33	-	93.24	(-168.50)	51.50	(-0.65)	-
29	Uttar Pradesh State Sugar Corporation Limited	2009-10	2011-12	23.41	18.77	3.68	0.96	488.64	(DP) 59.85	1103.71	(-248.08)	401.73	19.73	4.91

(1)	(2)	(3)	(4)	5(a)	5(b)	5(c)	5(d)	(6)	(7)	(8)	(9)	(10)	(11)	(12)
30	Uttar Pradesh State Yam Company Limited (Subsidiary of Uttar Pradesh State Textile Corporation Limited)	2010-11	2011-12	(-0.25)	3.01	0.27	(-13.53)	34.09	(IL) 2.59	31.91	(-1154.52)	(-33.89)	(-0.52)	-
	Sector Wise total			5.28	54.36	10.72	(-59.80)	921.91	-	1997.55	(-1725.92)	727.86	(-5.44)	-
31	POWER Dakshinanchal Vidyut Vitaran Nigam Limited (Subsidiary of Uttar Pradesh Power Corporation Limited)	2008-09 (Revised)	2012-13	(-862.29)	61.51	137.58	(-1061.38)	2537.35	-	370.07	(-4814.40)	(-11623.50)	(-999.87)	-
32	Kanpur Electricity Supply Company Limited	2008-09	2011-12	(-25.00)	41.59	14.11	(-80.70)	845.86	(IL) 0.47	60.00	(-1381.30)	(-709.84)	(-39.11)	-
33	Madhyanchal Vidyut Vitaran Nigam Limited (Subsidiary of Uttar Pradesh Power Corporation Limited)	2008-09 (Revised)	2012-13	(-469.95)	140.14	95.90	(-705.99)	2206.77	-	190.85	(-3197.30)	328.76	(-565.85)	-
34	Pashchimanchal Vidyut Vitaran Nigam Limited (Subsidiary of Uttar Pradesh Power Corporation Limited)	2008-09 (Revised)	2012-13	(-345.77)	137.38	153.06	(-636.21)	4507.62	-	559.95	(-3206.74)	(-177.59)	(-498.83)	-
35	Purvanchal Vidyut Vitaran Nigam Limited (Subsidiary of Uttar Pradesh Power Corporation Limited)	2008-09	2012-13	(-971.60)	123.24	94.20	(-1189.04)	2626.81	-	460.75	(-4479.59)	(-865.12)	(-1065.80)	-
36.	Sonebhadra Power Generation Company Limited	2008-09	2011-12	-	-	-	-	-	-	0.16	(-0.07)	0.35	-	-
37.	UCM Coal Company Limited	2010-11	2011-12	-	-	-	-	-	-	0.16	-	1.11	-	-
38.	UPSIDC Power Company Limited (subsidiary of Uttar Pradesh State Industrial Development Corporation Limited)	2010-11	2011-12	(-0.02)	-	-	(-0.02)	0.02	-	0.05	(-0.20)	(-0.07)	(-0.02)	-
39.	Uttar Pradesh Jal Vidyut Nigam Limited	2009-10 (Revised)	2011-12	24.72	22.52	10.76	(-8.56)	97.44	(DL) 8.08	427.25	(-273.96)	320.69	13.96	4.35
40.	Uttar Pradesh Power Corporation Limited	2007-08	2011-12	(-3465.08)	427.31	1.16	(-3893.55)	12203.90	(IL) 2179.49	470.74	(-10087.27)	9374.12	(-3466.24)	-
41.	Uttar Pradesh Power Transmission Corporation Limited (Subsidiary Uttar Pradesh Power Corporation Limited)	2008-09	2012-13	474.82	206.69	278.26	(-10.13)	780.95	-	5.00	(-1001.21)	3495.36	196.56	5.62
42.	Uttar Pradesh Rajya Vidyut Utpadan Nigam Ltd	2010-11	2012-13	576.42	283.81	166.23	126.38	4752.30	-	6302.01	(-451.95)	1494.67	410.19	27.44
43.	Western UP Power Transmission Company Limited	2010-11	2012-13	(-0.60)	-	-	(-0.60)	-	-	0.05	(-4.24)	(-4.19)	(-0.60)	-

(1)	(2)	(3)	(4)	5(a)	5(b)	5(c)	5(d)	(6)	(7)	(8)	(9)	(10)	(11)	(12)
44.	South East UP Power Transmission Corporation Limited	Accounts not finalised	-	-	-	-	-	-	-	-	-	-	-	-
45.	Jawahar Vidyut Utpadan Nigam Limited	2009-10	2011-12	(-) 1.23	-	(-) 1.23	-	-	-	0.05	(-) 1.23	(-) 1.18	(-) 1.23	-
	SECRVICE			(-)5065.58	1444.19	951.26	(-) 7461.03	30559.02	-	8847.09	(-) 28899.46	11633.57	(-) 6016.84	-
46	Abhyaranya Paripath Paryatan Limited	2010-11	2011-12	-	-	-	-	-	-	0.05	-	0.05	-	-
47	Adyhasasai Paripath Paryatan Limited	2010-11	2011-12	-	-	-	-	-	-	0.05	-	0.05	-	-
48	Awadh Paryatan Limited	2010-11	2011-12	-	-	-	-	-	-	0.05	-	0.05	-	-
49	Bithpur Paripath Paryatan Limited	2010-11	2011-12	-	-	-	-	-	-	0.05	-	0.05	-	-
50	Braj Darshan Paripath Paryatan Limited	2010-11	2011-12	-	-	-	-	-	-	0.05	-	0.05	-	-
51	Braj Paripath Paryatan Limited	2010-11	2011-12	-	-	-	-	-	-	0.05	-	0.05	-	-
52	Bundelkhand Paripath Paryatan Limited	2010-11	2011-12	-	-	-	-	-	-	0.05	-	0.05	-	-
53	Ganga Saryu Paripath Paryatan Limited	2010-11	2011-12	-	-	-	-	-	-	0.05	-	0.05	-	-
54	Garhmukteshwar Paryatan Limited	2010-11	2011-12	-	-	-	-	-	-	0.05	-	0.05	-	-
55	Gyanodaya Paripath Paryatan Limited	2010-11	2011-12	-	-	-	-	-	-	0.05	-	0.05	-	-
56	Hastinapur Paripath Paryatan Limited	2010-11	2011-12	-	-	-	-	-	-	0.05	-	0.05	-	-
57	Hindon Paryatan Limited	2010-11	2011-12	-	-	-	-	-	-	0.05	-	0.05	-	-
58	Madyanchal Paripath Paryatan Limited	2010-11	2011-12	-	-	-	-	-	-	0.05	-	0.05	-	-
59	Paanchal Paripath Paryatan Limited	2010-11	2011-12	-	-	-	-	-	-	0.05	-	0.05	-	-
60	Pachimanchal Paripath Paryatan Limited	2010-11	2011-12	-	-	-	-	-	-	0.05	-	0.05	-	-
61	Sangam Paripath Paryatan Limited	2010-11	2011-12	-	-	-	-	-	-	0.05	-	0.05	-	-
62	Satyadarshan Paripath Paryatan Limited	2010-11	2011-12	-	-	-	-	-	-	0.05	-	0.05	-	-
63	Shajhanpur Paripath Paryatan Limited	2010-11	2011-12	-	-	-	-	-	-	0.05	-	0.05	-	-
64	Siddhartha Paripath Paryatan Limited	2010-11	2011-12	-	-	-	-	-	-	0.05	-	0.05	-	-
65	Taj Shilp Paryatan Limited	2010-11	2011-12	-	-	-	-	-	-	0.05	-	0.05	-	-
66	Taj Virasat Paripath Paryatan Limited	2010-11	2011-12	-	-	-	-	-	-	0.05	-	0.05	-	-
67	Triveni Paripath Paryatan Limited	2010-11	2011-12	-	-	-	-	-	-	0.05	-	0.05	-	-
68	Uttar Pradesh Development Systems Corporation Limited	2009-10	2011-12	0.94	-	0.05	0.89	4.29	(DP) 2.44	1.00	0.54	3.69	0.89	24.12
69	Uttar Pradesh Export Corporation Limited	2005-06	2011-12	0.08	0.02	0.07	(-)0.01	6.47	-	7.24	21.92	0.61	0.01	1.64

(1)	(2)	(3)	(4)	5(a)	5(b)	5(c)	5(d)	(6)	(7)	(8)	(9)	(10)	(11)	(12)
70	Uttar Pradesh Food and Essential Commodities Corporation Limited	2003-04	2011-12	10.38	1.99	0.19	8.20	528.90	(DP) 4.46	5.00	11.37	73.44	10.19	13.88
71	Uttar Pradesh State Tourism Development Corporation Limited	2010-11	2011-12	2.76	0.01	1.58	1.17	24.03	-	18.75	(-)13.31	13.24	1.18	8.91
	Sector wise total			14.16	2.02	1.89	10.25	563.69	-	33.09	20.52	92.08	12.27	13.33
72	MISCELLANEOUS Uttar Pradesh Mahila Kalyan Nigam Limited	2010-11	2011-12	0.97	-	0.06	0.91	2.11	(DP) 0.63	5.19	(-)0.52	8.45	0.91	10.77
73	Uttar Pradesh Purva Sainik Kalyan Nigam Limited	2008-09	2011-12	8.45	-	0.18	8.27	86.75	(DP) 1.43	0.43	46.36	63.64	8.27	13.00
74	Uttar Pradesh Waqf Vikas Nigam Limited	1998-99	2007-08	0.01	-	0.01	-	0.28	(IL) 0.002	3.50	0.02	2.11	-	-
75	Lucknow City Transport services Limited	Accounts not finalized												
76	Meerut City Transport Services Limited	Accounts not finalized												
77	Allahabad City Transport Services Limited	Accounts not finalized												
78	Agra Mathura City Transport Services limited	Accounts not finalized												
	Sector wise total			9.43	-	0.25	9.18	89.14	-	9.12	45.86	74.20	9.18	12.37
	Total A (All sector wise working Government companies)			(-)4569.28	1528.19	982.03	(-)7079.50	38831.26	-	11246.74	(-) 30245.00	14324.28	(-) 5551.31	-
B	Working Statutory Corporations													
	AGRICULTURE & ALLIED													
1	Uttar Pradesh State Warehousing Corporation	2009-10	2011-12	72.63	0.49	7.72	64.42	218.45	(IP) 7.35	11.17	-	312.80	64.91	20.75
	Sector wise total			72.63	0.49	7.72	64.42	218.45		11.17	-	312.80	64.91	20.75
	FINANCING													
2	Uttar Pradesh Financial Corporation	2010-11	2011-12	18.40	0.05	-	18.35	20.93	(DP) 9.49	179.28	(-)932.99	995.65	18.40	1.85
	Sector wise total			18.40	0.05	-	18.35	20.93		179.28	(-) 932.99	995.65	18.40	1.85
	INFRASTRUCTURE													
3	Uttar Pradesh Avas Evam Vikas Parishad	2010-11	2011-12	362.72	-	3.92	358.80	666.92	-	-	3275.04	1261.13	358.80	28.45
4	Uttar Pradesh Jal Nigam	2009-10	2012-13	91.02	40.16	0.35	50.51	536.33	-	-	(-)85.39	7913.99	90.67	1.15
	Sector wise total			453.74	40.16	4.27	409.31	1203.25	-	-	3189.65	9175.12	449.47	4.90
	SERVICE													
5	Uttar Pradesh State Road Transport Corporation	2010-11	2011-12	106.93	20.44	124.98	(-)38.49	2038.56	(IL) 87.84	369.13	(-) 934.83	(-)287.51	(-)18.05	-
6	Uttar Pradesh Government Employees Welfare Corporation	2010-11	2012-13	12.08	0.86	0.06	11.16	274.70	-	-	7.10	38.85	12.02	30.94
	Sector Wise total			119.01	21.30	125.04	(-) 27.33	2313.26	-	369.13	(-) 927.73	(-)248.66	(-)6.03	-
7	Miscellaneous Uttar Pradesh Forest Corporation	2010-11*	2012-13	126.10	-	0.93	125.17	400.31	(DP) 4.49	-	1173.95	1135.72	125.17	11.02
	Sector Wise total			126.10	-	0.93	125.17	400.31	-	-	1173.95	1135.72	125.17	11.02
	Total B (All sector wise statutory corporations)			789.88	62.00	137.96	589.92	4156.20	-	559.58	2502.88	11370.63	651.92	5.73
	Total (A+B)			(-)3779.40	1590.19	1119.99	(-) 6489.58	42987.46	-	11806.32	(-) 27742.12	25694.91	(-)4899.39	-

(0)	(2)	(3)	(4)	5(a)	5(b)	5(c)	5(d)	(6)	(7)	(8)	(9)	(10)	(11)	(12)
C	Non working Companies													
	AGRICULTURE & ALLIED													
1	Command Area Poultry Development Corporation Limited (619-B company)	1994-95	-	0.02	-	0.01	0.01	0.96	-	0.24	-	-	0.01	-
2	Uttar Pradesh (Poorva) Ganna Beej Evam Vikas Nigam Limited	2002-03 (UL from 01-07-03)	2004-05	(-0.14)	0.04	-	(-0.18)	0.04	-	0.31	(-0.55)	1.53	(-0.14)	-
3	Uttar Pradesh (Rohilkhand Tarai) Ganna Beej Evam Vikas Nigam Limited	2006-07 (UL from 01-07-03)	2008-09	0.06	1.10	0.01	(-1.05)	0.11	-	0.71	(-8.01)	3.31	0.05	1.51
4	Uttar Pradesh Pashudhan Udyog Nigam Limited	2007-08	2011-12	0.08	0.11	-	(-0.03)	0.19	-	2.79	(-8.37)	1.33	0.08	6.02
5	Uttar Pradesh Poultry and Livestock Specialities Limited	2007-08	2011-12	(-0.04)	0.16	-	(-0.20)	0.01	(IL) 0.31	0.50	(-3.65)	(-1.42)	(-0.04)	-
6	Uttar Pradesh State Horticultural Produce Marketing & Processing Corporation Limited	1984-85	1994-95	(-0.51)	0.15	0.01	(-0.67)	0.27	-	1.90	(-2.55)	80.72	(-0.52)	-
	Sector wise Total			(-0.53)	1.56	0.03	(-2.12)	1.58	-	6.45	(-23.13)	85.47	(-0.56)	-
	FINANCING													
7	Uplasee Financial Services Limited (Subsidiary of Uttar Pradesh Electronics Corporation Ltd)	1997-98	1998-99	0.37	0.54	0.23	(-0.40)	1.29	-	1.05	(-0.40)	5.34	0.14	2.62
8	Uttar Pradesh Panchayati Raj Vitta Evam Vikas Nigam Limited	1993-94	2011-12	(-0.10)	-	-	(-0.10)	0.36	-	1.39	(-0.24)	1.10	(-0.10)	-
	Sector Wise Total			0.27	0.54	0.23	(-0.50)	1.65	-	2.44	(-0.64)	6.44	0.04	0.62
	INFRASTRUCTURE													
9	Uttar Pradesh Cement Corporation Limited	1995-96	1996-97	(-20.07)	24.84	2.84	(-47.75)	113.01	-	68.28	(-425.99)	(-239.80)	(-22.91)	-
10	Uttar Pradesh State Mineral Development Corporation Limited	2009-10	2011-12	4.84	1.54	0.06	3.24	5.18	(DP) 3.19	59.43	(-76.44)	1.11	4.78	430.63
11	Vindhyachal Abrasives Limited (Subsidiary of Uttar Pradesh State Mineral Development Corporation Ltd)	1987-88 (UL from 28.11.02)	1995-96	(-0.11)	0.01	-	(-0.12)	-	-	-	(-0.11)	0.01	(-0.11)	-
	Sector wise Total			(-15.34)	26.39	2.90	(-44.63)	118.19	-	127.71	(-502.54)	(-238.68)	(-18.24)	-
	MANUFACTURE													
12	Auto Tractors Limited	1991-92	1995-96	0.37	0.26	-	0.11	6.31	-	7.50	-	11.14	0.37	3.32
13	Bhadoli Woollens Limited (Subsidiary of Uttar Pradesh State Textile Corporation Ltd)	1994-95 (UL from 20.02.96)		0.85	2.51	-	(-1.66)	0.27	-	3.76	(-11.95)	(-0.49)	0.85	-
14	Chhata Sugar Company Limited (Subsidiary of Uttar Pradesh State Sugar Corporation Limited)	2010-11	2011-12	(-0.41)	0.70	0.16	(-1.27)	0.53	-	81.38	(-95.26)	4.18	(-0.57)	-
15	Continental Float Glass Limited (Subsidiary of Uttar Pradesh State Mineral Development Corporation Ltd)	1997-98 (UL from 01-04-02)	2002-03	-	-	-	-	-	-	46.24	-	83.87	Company went into liquidation (since inception)	-

(1)	(2)	(3)	(4)	5(a)	5(b)	5(c)	5(d)	(6)	(7)	(8)	(9)	(10)	(11)	(12)
16	Electronics and Computers (India) Ltd. (619-B Company)	-	-	-	-	-	-	-	-	-	-	-	-	-
17	Ghatampur Sugar Company Limited (Subsidiary of Uttar Pradesh State Sugar Corporation Limited)	2010-11	2012-13	(-1.98)	-	(-1.98)	-	0.11	-	8.95	(-) 149.33	5.34	(-1.98)	-
18	Kampur Components Limited (Subsidiary of Uttar Pradesh Electronics Corporation Ltd.)	Under liquidation from 10-06-96	-	-	-	-	-	0.05	-	--	-	-	-	-
19	Nandganj-Sihori Sugar Company Limited (Subsidiary of Uttar Pradesh State Sugar Corporation Limited)	2010-11	2012-13	(-5.81)	-	0.09	(-5.90)	0.05	-	239.38	(-)245.18	12.82	(-5.90)	-
20	Steel and Fasteners Limited (619-B Company)	1978-79	-	-	-	-	-	0.90	-	-	-	-	-	-
21	The Indian Turpentine and Rosin Company Limited (Subsidiary of Uttar Pradesh Electronics Corporation Limited)	2009-10	2011-12	(-0.37)	0.10	0.01	(-0.48)	0.03	-	0.22	(-)32.33	(-)26.64	(-0.38)	-
22	Upron Sempack Limited (Subsidiary of Uttar Pradesh Electronics Corporation Limited)	1979-80 (UL from 10.06.96)	1983-84	(-0.01)	-	-	(-0.01)	-	-	0.03	(-)0.03	0.02	(-0.01)	-
23	Uttar Pradesh Abscott Private Limited (Subsidiary of Uttar Pradesh Small Industries Corporation Limited)	1975-76 (UL from 19-04-96)	-	(-0.01)	0.01	-	(-0.02)	-	-	0.05	-	0.12	(-0.01)	-
24	Uttar Pradesh Carbide and Chemicals Limited (Subsidiary of Uttar Pradesh State Mineral Development Corporation Ltd.)	1992-93 (UL from 19.02.94)	-	(-0.15)	5.67	0.36	(-0.18)	2.26	-	6.58	(-)35.32	(-)18.45	(-0.51)	-
25	Uttar Pradesh Instruments Limited (Subsidiary of Uttar Pradesh State Industrial Development Corporation Limited)	2001-02	2005-06	(-0.26)	0.02	0.01	(-0.29)	0.16	-	1.93	(-)38.75	0.35	(-0.27)	-
26	Uttar Pradesh Plant Protection Appliances (Private) Limited (Subsidiary of Uttar Pradesh Small Industries Corporation Limited)	1974-75 (UL from 11/2003)	1984-85	(-0.01)	-	-	(-0.01)	0.04	-	0.01	0.01	(-)0.34	(-0.01)	-
27	Uttar Pradesh State Brassware Corporation Limited	1997-98	2007-08	2.52	0.12	0.01	2.39	0.53	-	5.38	(-)6.04	3.59	2.51	69.92
28	Uttar Pradesh State Textile Corporation Limited	2010-11	2011-12	(-0.27)	6.71	0.40	(-0.38)	-	-	160.79	(-) 465.52	(-)139.98	(-0.67)	-
29	Uttar Pradesh Tyre and Tubes Limited (Subsidiary of Uttar Pradesh State Industrial Development Corporation Limited)	1992-93 (UL from 09.01.96)	-	2.10	4.27	-	(-0.17)	1.38	-	1.83	(-)9.96	(-)4.06	2.10	-
	Sector Wise Total			(-3.44)	20.37	1.04	(-24.85)	12.62	-	564.03	(-) 1089.66	(-)68.53	(-4.48)	-

(1)	(2)	(3)	(4)	5(a)	5(b)	5(c)	5(d)	(6)	(7)	(8)	(9)	(10)	(11)	(12)
	SERVICE SECTOR													
30	Agra Mandal Vikas Nigam Limited	1988-89	2007-08	(-0.08)	-	0.01	(-0.09)	3.91	-	1.00	(-0.35)	0.92	(-0.09)	-
31	Allahabad Mandal Vikas Nigam Limited	1983-84	1992-93	(-0.03)	0.01	0.07	(-0.11)	2.74	-	0.55	(-0.11)	0.99	(-0.10)	-
32	Bareilly Mandal Vikas Nigam Limited	1988-89	2011-12	(-0.22)	0.12	0.05	(-0.39)	3.33	-	1.00	(-1.52)	4.63	(-0.27)	-
33	Bundelkhand Concrete Structurals Limited (Subsidiary of Uttar Pradesh Bundelkhand Vikas Nigam Ltd.)	1986-87	1993-94	-	-	-	-	-	-	0.02	(-0.01)	0.04	-	-
34	Gandak Smadesh Kshetriya Vikas Nigam Limited	1976-77 (UL from 1976-77)	-	-	-	-	-	-	-	0.46	-	0.46	-	-
35	Gorakhpur Mandal Vikas Nigam Limited	1987-88	2011-12	(-0.15)	0.01	0.03	(-0.19)	1.30	-	1.26	(-1.52)	1.32	(-0.18)	-
36	Lucknow Mandaliya Vikas Nigam Limited	1981-82	1992-93	0.54	-	0.53	0.01	1.70	-	0.50	1.49	0.61	0.01	1.64
37	Meerut Mandal Vikas Nigam Limited	2008-09	2010-11	(-0.03)	-	-	(-0.03)	-	-	1.00	(-1.50)	(-0.01)	(-0.03)	-
38	Moradabad Mandal Vikas Nigam Limited	1991-92	2011-12	(-0.08)	0.11	-	(-0.19)	0.85	-	0.25	(-0.78)	0.12	(-0.08)	-
39	Tarai Anusuchit Janjati Vikas Nigam Limited	1982-83	1990-91	(-0.04)	-	-	(-0.04)	0.01	-	0.25	-	0.70	(-0.04)	-
40	Uttar Pradesh Bundelkhand Vikas Nigam Limited	2008-09	2010-11	0.25	-	-	0.25	0.20	-	1.23	(-1.57)	(-0.29)	0.25	-
41	Uttar Pradesh Chaichitra Nigam Limited	2009-10	2011-12	0.03	0.40	0.01	(-0.38)	0.12	(IL) 0.14	8.18	(-14.80)	(-4.14)	0.02	-
42	Uttar Pradesh Poorvanchal Vikas Nigam Limited	1987-88	1994-95	(-0.11)	-	0.03	(-0.14)	1.30	-	1.15	(-1.08)	0.19	(-0.14)	-
43	Varanasi Mandal Vikas Nigam Limited	1987-88	1993-94	(-0.02)	-	0.01	(-0.03)	1.47	-	0.70	(-0.26)	0.88	(-0.03)	-
	Sector wise Total			0.06	0.65	0.74	(-1.33)	16.93		17.55	(-22.01)	6.42	(-0.68)	
	Total C (All sector wise non working companies)			(-18.98)	49.51	4.94	(-73.43)	150.97		718.18	(-1637.98)	(-208.88)	(-23.92)	
	Grand Total (A+B+C)			(-3798.38)	1639.70	1124.93	(-6563.01)	43138.43		12524.50	(-29380.10)	25486.03	(-4923.31)	

Note: IL indicates increase in loss, DL indicates decrease in loss, IP indicates increase in profit and DP indicates decrease in profit.

Impact of accounts comments include the net impact of comments of Statutory Auditor and CAG.

@ Capital employed represents net fixed assets (including capital work in progress) plus working capital except in case of finance companies/corporations where the capital employed is worked out as a mean of aggregate of the opening and closing balances of paid up capital, free reserves, bonds, deposits, and borrowings including refinance.

\$ Return on capital employed has been worked out by adding profit and interest charged to profit and loss account.

* The audit of Accounts for the periods 1999-2000 to 2007-08 was conducted by Local Audit and Audit for the year 2008-09 has been entrusted to this Office as per order of the Corporation dated 31 July 2010 after making necessary amendment in the UP Forest Corporation Act, 1974.

Annexure-3

**Statement showing grants and subsidy received/receivable, guarantees received, waiver of dues, loans written off and loans converted in to equity during the year and guarantee commitment at the end of March 2012
(Referred to in paragraph 1.10)**

Sl No	Sector and name of the company	Equity / loans received out of budget during the year		Grants and subsidy received during the year				Guarantees received during the year and commitment at the end of the year				Waiver of dues during the year			
		Equity	Loans	Central Government	State Government	Others	Total	Received	Commitment @	Loan repayment written off	Loans converted into equity	Interest / penal interest waived	Total		
1	2	(3a)	(3b)	4(a)	4(b)	4(c)	4(d)	5(a)	5(b)	6(a)	6(b)	6(c)	6(d)		
A	Working Government companies														
1.	AGRICULTURE AND ALLIED Uttar Pradesh Bhumi Sudhar Nigam				125.03		125.03								
	Sector wise total				125.03		125.03								
	FINANCING														
2.	UP Pichehara Varg Vikas Nigam Limited		-		-		-		22.65						
3.	Uttar Pradesh Scheduled Castes Finance and Development Corporation Limited	5.00			141.85		141.85								
	Sector wise total	5.00			141.85		141.85		22.65						
	MANUFACTURE														
4.	Uttar Pradesh State Yarn Company Limited		11.85		-		-								
	Sector Wise total		11.85												
	POWER														
5.	Madyanchal Vidyut Vitaran Nigam Limited				657.98		657.98								
6.	Paschimanchal Vidyut Vitaran Nigam Limited				1031.21		1031.21								
7.	Uttar Pradesh Power Corporation Limited	3315.70			-		-	145.00	145.00						
8.	Uttar Pradesh Power Transmission Corporation Limited	409.05					-		461.56						
9.	UP Rajya Vidyut Utiapadan Nigam Limited	555.75					-	1000.00	8899.63						
	Sector wise total	4280.50			1689.19		1689.19	1145.00	9506.19						
	SERVICE														
10.	UP Development Systems Corporation Limited				2.60		2.60								
11.	Uttar Pradesh Food & Essential Commodities Corporation Limited							30.00	30.00						
	Sector wise total				2.60		2.60	30.00	30.00						

1	2	(3a)	(3b)	4(a)	4(b)	4(c)	4(d)	5(a)	5(b)	6(a)	6(b)	6(c)	6(d)
	MISCELLANEOUS												
12.	Uttar Pradesh Mahila Kalyan Nigam Limited		-	-	16.84	-	16.84	-	-	-	-	-	-
	Sector wise total				16.84		16.84						
	Total A (All sector wise working Government companies)	4285.50	11.85	-	1975.51	-	1975.51	1175.00	9558.84	-	-	-	-
B	Working Statutory Corporations												
	INFRASTRUCTURE												
1.	Uttar Pradesh Jal Nigam	-	-	-	1132.83*	-	1132.83*	-	-	-	-	-	-
	Sector wise total				1132.83*		1132.83*						
	SERVICE												
2.	Uttar Pradesh State Road Transport Corporation	40.00	-	-	-	-	-	-	-	-	-	-	-
	Sector Wise total	40.00	-	-	-	-	-	-	-	-	-	-	-
	Total B (all sector wise statutory corporations)	40.00	-	-	1132.83	-	1132.83	-	-	-	-	-	-
	Total (A+B)	4325.50	11.85	-	3108.34	-	3108.34	1175.00	9558.84	-	-	-	-
C	Non working Companies												
	MANUFACTURE												
1.	Chhata Sugar Company Limited	-	-	-	-	-	-	19.65	19.65	-	-	-	-
	Sector Wise Total							19.65	19.65	-	-	-	-
	SERVICE SECTOR												
2.	Gorakhpur Mandal Vikas Nigam Limited				0.01		0.01						
3.	UP Bundelkhand Vikas Nigam Limited				0.20		0.20						
4.	Varanasi Mandal Vikas Nigam Limited				0.26		0.26						
	Sector wise Total	-			0.47		0.47						
	Total C (All sector wise non working companies)	-			0.47	-	0.47	19.65	19.65	-	-	-	-
	Grand Total (A+B+C)	4325.50	11.85	-	3108.81	-	3108.81	1194.65	9578.49	-	-	-	-

@ Figures indicate total guarantee outstanding at the end of the year.

* It includes subsidy

Annexure-4

Statement showing investment made by the Government in the form of equity, loans, grants/subsidies to the working Government companies / Statutory corporations during the years for which Accounts have not been finalised

(Referred to in paragraph 1.22)

(₹ in crore)

Sl. No.	Name of company/corporation	Year up to which accounts finalised	Paid up capital as per latest finalised accounts	Investment made by state Government during the years for which accounts were not finalised			
				Equity	Loans	Grants	Subsidies
A. Working Government Companies							
1.	Uttar Pradesh Bhumi Sudhar Nigam	2008-09	1.50	-	-	125.03	-
2.	Uttar Pradesh Scheduled Castes Finance and Development Corporation Limited	2008-09	102.83	5.00	-	141.85	-
3.	UP State Yarn Company Limited	2010-11	31.91	-	11.85	-	-
4.	Madyanchal Vidyut Vitaran Nigam Limited (Subsidiary of Uttar Pradesh Power Corporation Limited)	2008-09 (Revised)	190.85	-	-	-	657.98
5.	Paschimanchal Vidyut Vitaran Nigam Limited (Subsidiary of Uttar Pradesh Power Corporation Limited)	2008-09 (Revised)	559.95	-	-	-	1031.21
6.	Uttar Pradesh Power Corporation Limited	2007-08	470.74	3315.70	-	-	-
7.	Uttar Pradesh Power Transmission Corporation Limited (Subsidiary of Uttar Pradesh Power Corporation Limited)	2008-09	5.00	409.05	-	-	-
8.	UP Rajya Vidyut Utpadan Nigam Limited	2010-11	6302.01	555.75	-	-	-
9.	Uttar Pradesh Development Systems Corporation Limited	2009-10	1.00	-	-	2.60	-
10.	Uttar Pradesh Mahila Kalyan Nigam	2010-11	5.19	-	-	16.84	-
	Total A		7670.98	4285.50	11.85	286.32	1689.19
B. Working Statutory Corporations							
1.	UP Jal Nigam	2009-10	-	-	-	272.18	860.65
2.	Uttar Pradesh Road Transport Corporation	2009-10	-	40.00	-	-	-
	Total B			40.00		272.18	860.65
	Grand Total (A+B)		7670.98	4325.50	11.85	558.50	2549.84

Annexure-5
Statement showing financial position of Statutory corporations
(Referred to in paragraph 1.13)

Working Statutory corporations

1. Uttar Pradesh State Road Transport Corporation

(₹ in crore)

Particulars	2008-09	2009-10	2010-11
A. Liabilities			
Capital (including capital loan and equity capital)	369.13	369.13	369.13
Borrowings:			
Government:			
Central	-	-	-
State	-	-	-
Others	239.17	258.13	243.09
Funds	23.19	8.35	8.69
Trade dues and other current liabilities (including provisions)	808.81	906.34	1012.24
Uttar Pradesh and Uttaranchal State Road Transport Corporation reorganisation settlement account	26.41	26.41	26.41
Total A	1466.71	1568.36	1659.56
B. Assets			
Gross Block	1096.27	1162.46	1189.61
Less: Depreciation	649.49	711.67	730.85
Net fixed assets	446.78	450.79	458.76
Capital work in progress (including cost of chassis)	11.56	46.41	13.13
Investments	-	-	-
Current Assets, Loans and Advances	204.08	203.60	252.84
Accumulated Losses	804.29	867.56	934.83
Total B	1466.71	1568.36	1659.83
C. Capital employed¹	(-)146.39	(-)205.54	(-)287.51

2. Uttar Pradesh Financial Corporation

(₹ in crore)

Particulars	2008-09	2009-10	2010-11
A. Liabilities			
Paid-up capital	179.28	179.28	179.28
Share application money	-	-	-
Reserve fund and other reserves and surplus	19.50	19.36	19.25
Borrowings:			
(i) Bonds and debentures	309.75	217.32	167.16
(ii) Fixed deposits	0.1	0.03	0.009
(iii) Industrial Development Bank of India and Small Industries Development Bank of India	382.28	374.94	374.84
(iv) Reserve Bank of India			
(v) Loans in lieu of share capital:			
(a) State Government	139.69	228.25	269.27
(b) National Handicapped Finance and Development Corporation	0.57	0.53	0.43
(vi) Others (including State Govt.)	5.56	-	-
Other Liabilities and Provisions	411.40	407.38	390.67
Total A	1448.13	1427.09	1400.91
B. Assets			
Cash and Bank balances	8.06	9.49	26.41
Investments	15.10	15.10	15.10
Loans and Advances	438.02	414.88	387.76
Net Fixed Assets	10.77	10.42	10.08
Other Assets	24.48	25.85	28.57
Misc. Expenditure	-	-	-
Profit and Loss Account	951.70	951.35	932.99
Total B	1448.13	1427.09	1400.91
C. Capital Employed²¹	1046.00	1008.23	995.65

¹ Capital employed represents net fixed assets (including capital work-in-progress) plus working capital.

² Capital employed represents the mean of the aggregate of opening and closing balances of paid-up capital, seed money, debentures, reserves (other than those which have been funded specifically and backed by Investment outside), bonds, deposits and borrowings (including refinance).

3. Uttar Pradesh State Warehousing Corporation

(₹ in crore)

Particulars	2007-08	2008-09	2009-10
A. Liabilities			
Paid up capital ³	13.37	13.37	13.37
Reserves and surplus	217.24	252.31	299.43
Subsidy	-	-	-
Borrowings:			
Government	-	-	-
Others	30.03	21.05	-
Trade Dues and Current Liabilities (including provisions)	56.54	56.72	74.59
Total A	317.18	343.45	387.39
B. Assets			
Gross Block	289.23	295.37	274.34
Less Deprecation	72.54	77.81	52.80
Net Fixed Assets	216.69	217.56	221.54
Capital work-in-progress	(-).02	(-).02	(-).02
Current Assets, Loans and Advances	102.51	127.91	166.67
Profit and Loss Account	-	-	-
Total B	317.18	343.45	387.39
Capital Employed⁴	260.64	286.73	312.80

4. Uttar Pradesh Forest Corporation

(₹ in crore)

Particulars	2008-09	2009-10	2010-11
A. Liabilities			
Reserve and Surplus	936.56	1052.23	1173.95
Borrowings	10.71	14.87	15.75
Current Liabilities (including provisions)	129.76	141.74	189.00
Other Liabilities	-	-	-
Total A	1077.03	1208.84	1378.70
B. Assets			
Net Fixed Assets	11.24	16.44	17.59
Current Assets, Loans and Advances	1011.77	1138.38	1307.13
Accumulated loss	-	-	-
Uttaranchal Forest Development Corporation, Dehradun. (Net assets under its possession)	53.77	53.77	53.77
Miscellaneous Expenditure	0.25	0.25	0.21
Total B	1077.03	1208.84	1378.70
C. Capital employed⁴	893.25	1013.08	1135.72

5. Uttar Pradesh Avas Evam Vikas Parishad

(₹ in crore)

Particulars	2008-09	2009-10	2010-11
A. Liabilities			
Parishad Fund	2577.66	2916.12	3275.04
Surplus	-	-	-
Borrowings	-	-	-
Deposits	215.83	121.13	137.64
Reserve for maintenance of unsold property	-	-	-
Current Liabilities (including Registration Fee)	2719.92	3242.65	3379.60
Excess of assets over liabilities	-	-	-
Total A	5513.41	6279.90	6792.28
B. Assets			
(i) Net Fixed Assets	33.50	31.96	30.31
(ii) Investments	1835.39	1753.91	2151.55
(iii) Current Assets, Loans and Advances	3644.52	4494.03	4610.42
Total B	5513.41	6279.90	6792.28
C. Capital employed⁴	958.10	1283.34	1261.13

³ Including share capital pending allotment ₹ 2.20 crore.

⁴ Capital employed represents the net fixed assets (including capital work-in-progress) plus working capital.

6. Uttar Pradesh Jal Nigam

(₹ in crore)

Particulars	2007-08	2008-09	2009-10
A. Liabilities			
Borrowings			
Loans fund			
(i) From LIC	-		
(ii) From UP Government	393.14	393.14	509.54
(iii) From Banks	-	-	-
Grants from Government	5416.22	6150.13	7626.65
Deposits		-	
Current Liabilities:			
Centage on material unconsumed	57.86	73.67	109.96
Other liabilities	3724.37	4952.03	4541.27
(i) Deposits (deposit received for project)	2403.86	3088.47	4132.16
(ii) Provision for gratuity	6.50	6.50	6.50
Project transferred from LSGED to Jal Nigam	9.50	9.47	9.49
Total A	12011.45	14673.41	16935.57
B. Assets			
Gross Block	25.65	23.49	23.51
Less: Depreciation	9.77	9.20	9.53
Net Fixed Assets	15.88	14.29	13.98
Investments	--	-	-
PF Invested	144.48	144.19	143.31
Project:			
(i) Material	469.92	725.74	862.56
(ii) Work in progress	5098.39	6329.45	7851.64
(iii) Completed rural water project maintained by UP Jal Nigam	774.46	735.04	823.17
(iv) Rural water work project cost of LSGED transferred to UP Jal Nigam	9.08	9.08	9.08
Current Assets	4613.00	5824.90	6131.37
Loans and advances	750.67	806.28	1015.07
Deficit	135.57	84.44	85.39
Total B	12011.45	14673.41	1693.57
C. Capital employed⁵	5536.22	6321.53	7913.99

⁵ Capital employed represents the net fixed assets (including capital work-in-progress) plus working capital.

Annexure-6
Statement showing working results of Statutory corporations
(Referred to in paragraph 1.13)

A. Working Statutory corporations

1. Uttar Pradesh State Road Transport Corporation

(₹ in crore)

Particulars	2008-09	2009-10	2010-11
Operating			
(a) Revenue	1260.56	1602.22	2038.56
(b) Expenditure	1381.02	1684.71	2092.45
(c) Surplus (+)/Deficit (-)	(-)120.46	(-)82.49	(-)53.89
Non operating			
(a) Revenue	153.30	54.79	35.84
(b) Expenditure	22.17	24.27	20.44
(c) Surplus (+)/Deficit (-)	131.13	30.52	15.40
Total			
(a) Revenue	1413.86	1657.01	2074.40
(b) Expenditure	1403.19	1708.98	2112.89
(c) Net Profit (+)/Loss (-)	10.67	(-)51.97	(-)38.49
Interest on Capital and Loans	22.17	24.27	20.44
Total return on Capital employed	32.84	(-)27.70	(-)18.05

2. Uttar Pradesh Financial Corporation

(₹ in crore)

Particulars	2008-09	2009-10	2010-11
1 Income			
(a) Interest on loans	25.91	14.61	20.93
(b) Other Income	2.65	1.68	7.36
(c) Interest Provision written back	-	-	-
(d) NPA Provision written back	13.09	6.51	18.58
(e) Depreciation investment written back	-	-	-
Total 1	41.65	22.80	46.87
2. Expenses			
(a) Interest on long term loan	1.39	0.48	0.05
(b) Provision for non performing assets	5.00	1.44	0.003
(c) Other expenses	23.08	20.52	28.47
(d) Loss on sale of fixed assets	1.19	-	-
Total 2	30.66	22.44	28.52
3. Profit (+)/Loss (-) before tax (1-2)	10.99	0.36	18.35
4. Other appropriations	-	-	-
5. Amount available for dividend*	-	-	-
6. Dividend paid/payable	-	-	-
7. Total return on capital employed	12.38	0.84	18.40
8. Percentage of return on capital employed	1.18	0.08	1.85

3. Uttar Pradesh State Warehousing Corporation

(₹ in crore)

Particulars	2007-08	2008-09	2009-10
1. Income:			
(a) Warehousing charges	125.91	177.50	214.37
(b) Other Income	3.45	4.16	4.35
Total 1	129.36	181.66	218.72
2. Expenses:			
(a) Establishment charges	37.79	44.14	46.86
(b) Interest	2.61	1.90	0.49
(c) Other expenses	48.81	95.80	106.95
Total 2	89.21	141.84	154.30
3. Profit (+)/Loss (-) before tax	40.15	39.82	64.42
4 Appropriations:			
(i) Payment of income tax	12.42	10.12	28.41
(ii) Provision for tax:			

* Represents profit of current year available for dividend after considering the specific reserves and provision for taxation.

Particulars	2007-08	2008-09	2009-10
(a) Income tax			
(b) Dividend tax	0.28	0.28	0.28
(iii) Profit after tax (Amount available for dividend)	27.45	29.42	35.73
(iv) Dividend proposed for the year	1.67	1.67	1.67
(v) Other appropriations	25.78	27.75	34.06
5 Profit transferred to Balance Sheet			
Total return on capital employed	42.76	41.72	64.91
Percentage of return on capital employed	16.41	14.55	20.75

4. Uttar Pradesh Forest Corporation

(₹ in crore)

Particulars	2008-09	2009-10	2010-11
1. Income:			
Sales	215.80	283.16	329.90
Other Income	55.22	57.06	69.62
Closing Stock	105.55	123.36	136.62
Total 1	376.57	463.58	536.14
2. Expenditure:			
Purchases	95.16	120.14	119.01
Other Expenses	94.99	122.22	168.60
Opening Stock	84.83	105.55	123.36
Total 2	274.98	347.91	410.97
Net Profit	101.59	115.67	125.17
Total return on capital employed	101.59	115.67	125.17
Percentage of return on capital employed	11.37	11.42	11.02

5. Uttar Pradesh Avas Evam Vikas Parishad

(₹ in crore)

Particulars	2008-09	2009-10	2010-11
1 Income:			
(a) Income from property	426.06	508.44	397.40
(b) Other Income	379.34	326.33	395.12
Total 1	805.40	834.77	792.52
2. Expenditure:			
(a) Cost of property sold	260.08	332.62	211.37
(b) Establishment	75.09	119.95	180.44
(c) Interest	-	-	-
(d) Other expenses	46.10	43.74	41.91
Total 2	381.27	496.31	433.72
3. Excess of income over expenditure	424.13	338.46	358.80
4. Total return on capital employed	424.13	338.46	358.80
5. Percentage of total return on capital employed	44.27	26.37	28.45

6. Uttar Pradesh Jal Nigam

(₹ in crore)

Particulars	2007-08	2008-09	2009-10
1. Income:			
Centage	97.97	164.34	229.10
Survey and project fee	0.28	4.20	-
Receipt from consumers for scheme maintained by Jal Nigam	23.09	23.60	25.28
Other income	6.41	19.18	22.16
Income from financing activities	34.42	43.64	30.17
Revenue grant:			
(i) From UP Government for maintenance	102.27	153.28	134.91
(ii) From Government for HRD			
Income of C&DS	41.49	69.90	92.35
Income of Nalkoop wing	1.47	2.91	2.36
Interest	-	-	-
Grant	-	-	-
Others	-	-	-
Total 1	307.41	481.05	536.33

Particulars	2007-08	2008-09	2009-10
2. Expenditure			
Establishment charges/operating expenses	187.50	237.59	235.37
Expenditure on maintenance	78.82	122.34	169.31
Interest	16.32	21.29	40.16
Other expenses	-	-	-
Depreciation	0.30	0.31	0.35
Expenditure of C&DS	22.72	31.38	39.28
Expenditure of Nalkoop Nigam	1.14	1.60	1.35
Grant to Jal Sansthan	-	-	-
Grant to Irrigation	-	-	-
Total 2	306.80	414.51	485.82
Deficit (-)/Surplus (+)	0.61	66.54	50.51
Total return on capital employed	16.92	87.83	90.67

Source: Latest finalised accounts of the PSUs

Annexure-7
Statement showing voltage-wise capacity additions planned, actual additions and shortfall during five years up to 2011-12
(Referred to in paragraph 2.1.9)

Sl. No. (1)	Description (2)	2007-08 (3)	2008-09 (4)	2009-10 (5)	2010-11 (6)	2011-12 (7)	Total (8)
765 KV Sub-Stations (Numbers)							
1	At the beginning of the year	NIL	NIL	NIL	NIL	NIL	
2	Additions Planned for the year	NIL	NIL	NIL	01	01	02
3	Actual Additions during the year	NIL	NIL	NIL	NIL	01	01
4	At the end of the year (1+3)	NIL	NIL	NIL	NIL	01	
5	Shortfall in Additions (2-3)	NIL	NIL	NIL	01	NIL	01
765 KV Transformers Capacity (MVA)							
1	At the beginning of the year	NIL	NIL	NIL	NIL	NIL	
2	Additions/ augmentation Planned for the year	NIL	NIL	NIL	2000	2000	4000
3	Actual Additions during the year	NIL	NIL	NIL	NIL	1000	1000
4	Capacity at the end of the year (1+3)	NIL	NIL	NIL	NIL	1000	
5	Shortfall in Additions/ Augmentation (2-3)	NIL	NIL	NIL	2000	1000	3000
765 KV Lines (CKM)							
1	At the beginning of the year	409	409	409	409	409	
2	Additions Planned for the year	NIL	NIL	NIL	423	428	851
3	Actual Additions during the year	NIL	NIL	NIL	NIL	1.9	1.9
4	At the end of the year (1+3)	409	409	409	409	410.9	
5	Shortfall in Additions (2-3)	NIL	NIL	NIL	423	426.1	849.1
400 KV Sub-Stations (Numbers)							
1	At the beginning of the year	14	14	14	14	14	
2	Additions Planned for the year	NIL	NIL	02	06	04	12
3	Actual Additions during the year	NIL	NIL	NIL	NIL	NIL	NIL
4	At the end of the year (1+3)	14	14	14	14	14	
5	Shortfall in Additions (2-3)	0	0	02	06	04	12
400 KV Transformers Capacity (MVA)							
1	At the beginning of the year	7930	7930	7930	8785	8785	
2	Additions/ augmentation Planned for the year	NIL	390	2000	5370	2890	10650
3	Actual Additions during the year	NIL	NIL	855	NIL	75	930
4	Capacity at the end of the year (1+3)	7930	7930	8785	8785	8860	
5	Shortfall in Additions/ Augmentation (2-3)	0	390	1145	5370	2815	9720
400 KV Lines (CKM)							
1	At the beginning of the year	4259	4259	4259	4259	4259	
2	Additions Planned for the year	NIL	225	192	769	725	1911
3	Actual Additions during the year	NIL	NIL	NIL	NIL	NIL	NIL
4	At the end of the year (1+3)	4259	4259	4259	4259	4259	
5	Shortfall in Additions (2-3)	NIL	225	192	769	725	1911
220 KV Sub-Stations (Numbers)							
1	At the beginning of the year	48	49	54	57	63	
2	Additions Planned for the year	08	08	05	27	19	67
3	Actual Additions during the year	01	05	03	06	04	19
4	At the end of the year (1+3)	49	54	57	63	67	
5	Shortfall in Additions (2-3)	07	03	02	21	15	48
220 KV Transformers Capacity (MVA)							
1	At the beginning of the year	12570	13230	14730	15850	18120	
2	Additions/ augmentation Planned for the year	2480	2810	1780	7560	5920	20550
3	Actual Additions during the year	660	1500	1120	2270	1520	7070
4	Capacity at the end of the year (1+3)	13230	14730	15850	18120	19640	
5	Shortfall in Additions/ Augmentation (2-3)	1820	1310	660	5290	4400	13480
220 KV Lines (CKM)							
1	At the beginning of the year	6669	6809	6904	6996	7387	
2	Additions Planned for the year	125	868	853	1348	1697	4891
3	Actual Additions during the year	140	95	92	391	258	976
4	At the end of the year (1+3)	6809	6904	6996	7387	7645	
5	Shortfall in Additions (2-3)	(-15)	773	761	957	1439	3915
132 KV Sub-Stations (Numbers)							
1	At the beginning of the year	214	222	242	260	269	
2	Additions Planned for the year	25	17	17	45	37	141
3	Actual Additions during the year	08	20	18	09	06	61
4	At the end of the year (1+3)	222	242	260	269	275	
5	Shortfall in Additions (2-3)	17	(-03)	(-01)	36	31	80
132 KV Transformers Capacity (MVA)							
1	At the beginning of the year	15755	17094	19057	20260	22079	
2	Additions/ augmentation Planned for the year	1500	1910	1503	3720	2720	11353
3	Actual Additions during the year	1339	1963	1203	1819	1759	8083
4	Capacity at the end of the year (1+3)	17094	19057	20260	22079	23838	
5	Shortfall in Additions/ Augmentation (2-3)	161	(-53)	300	1901	961	3270
132 KV Lines (CKM)							
1	At the beginning of the year	10282	10862	11384	11973	12419	
2	Additions Planned for the year	1275	503	540	1550	1356	5224
3	Actual Additions during the year	580	522	589	446	331	2468
4	At the end of the year (1+3)	10862	11384	11973	12419	12750	
5	Shortfall in Additions (2-3)	695	(-19)	(-49)	1104	1025	2756

Annexure-8
Statement showing details of Time and Cost overrun in construction of sub-stations
(Referred to in paragraph 2.1.11)

Sl. No.	Name of Zone	Division	Particulars	Date of approval by TWC ³⁸	Capacity (MVA)	Estimated Cost (₹ in lakh)	Scheduled Date of Start	Actual Date of Start	Scheduled Date of Completion	Actual Date of Completion	Qty executed	Actual Expenditure (₹ in lakh)	Time overrun (in months)	Cost Overrun (₹ in lakh)	Reasons for time and cost overrun
1	2	3	4	5	6	7	8	9	10	11	12	13	14	15	16
1	TW Meerut	ETD-Meerut	132/33 KV Hapur Road SS	15.09.06	2x20	962.01	09/06	09/06	09/07	01/09	2x20	819.34	16	---	SS was delayed by 16 months due to slow allotment of material and indecision of headquaters.
2	TW Meerut	ETD-Muzaffarnagar	132/33KV Jolly Road SS (By pass road)	15.09.06	2x20	590.00	09/06	09/09	06/07	01/11	2x20	547.08	43	---	The Company took 40 months in finalisation of land though it was available ab-initio.
3	TW Meerut	Do	132KV Thana Bhawan SS	06.11.04	2x20	570.90	11/04	11/04	12/05	06/09	2x20	261.41	42	---	Possession of land could be obtained in October 2006 with delay of 24 month and slow progress of allotment of material, layout, lack of coordination between civil wing transmission wing.
4	TW Meerut	ETD-I Ghaziabad	220/132KV Loni SS	25.07.06	2x100+1x40	1989.90	07/06	07/06	01/08	09/08	2x100+1x40	2260.27	08	270.37	Time overrun resulted in cost overrun.
5	TW Meerut	ETD-I Noida	220KV SS sector-129 Noida	30.08.07	2x160+2x40	5986.94	08/07	08/07	12/08	06/11	2x160+2x40	3824.75	30	---	No reasons on records
6	TW Meerut	Do	220KV SS sector-62 Noida	30.08.07	1x100+2x60	5723.00	08/07	08/07	12/08	03/09	1x100+2x60	2039.18	3	---	Do
7	TW Meerut	Do	132/33 KV SS Sector-66	25.07.06	2x40	857.74	07/06	07/06	12/06	05/07	2x40	1117.02	5	259.28	Do

³⁸ TWC stands for Transmission Works Committee

1	2	3	4	5	6	7	8	9	10	11	12	13	14	15	16
8	TW Meerut	ETD-I Moradabad	220KV Shambhal Moradabad SS	18.05.05	2x100	2134.06	05/05	05/05	11/06	05/10	2x100	2396.78	42	262.72	Delay in start of civil work and receipt of material for SS
9	TW Meerut	ETD, Bijnor	132 kV substation Kirat pur	Proposed in VIIth plan	2x40	1369	09/91	09/91	03/94	03/09	2x40	966.61	181	---	Time overrun due to delay in possession of land February 2006
10	TW Meerut	ETD II, Ghaziabad	132 KV substation Hapur-II	04/2002	2x20	1009.57	04/2002	03/04	03/04	07/09	1x40	623.47	64	---	Time run was due to delayed supply of required material from the headquarters.
11	TC, Lucknow	ETD-II Lucknow	220/33KV Gomtinagar SS	15.09.06	3x60	4008.35	09/06	09/06	10/07	12/08	3x60	3147.86	14	---	Delay in finalisation of site for SS
12	TC, Lucknow	Do	132/33 KV S/S Ram Sanehi Ghat, Barabanki	NA	1x20	404.31	N A	N A	N A	12/08	1x20	533.96	NA	129.65	No reasons on records
13	TC, Lucknow	ETD-Faizabad	220/132KV 132/33 KV Sohawal SS	11.12.01	2x100+2x40	2425.47	12/01	12/06	06/03	12/09	2x100+2x40	1691.72	78	---	No reasons on records
14	TC, Lucknow	ETD-Hardoi	132KV Chakalwansi SS, Unnao	17.01.08	2x20	923.29	01/08	03/08	01/09	02/12	1x20	696.61	37	---	No reasons on records
15	TC Lucknow	ETD-I Bareilly	132 kV SS Richha	Approved by CEA on 1990	1x20	296	11/90	11/90	1991	10/09	1x20	374.18	216	78.18	Main reason of time overrun was delay in possession of land.
16	TC Lucknow	ETD-II, Bareilly	220 kV SS Dohna	07/06	2X100 2X40	2860	07/06	12/06	12/07	10/08	2X100 2X40	3503	10	643.00	Main reason of cost overrun was non-inclusion of cost of dismantling work of residential colony in original estimate.
17	TC Lucknow	ETD-II Bareilly	132 KV SS Pooranpur	Approved by CEA on 11/90	1x20	270	11/90	11/90	11/91	01/08	1x20	205.90	193	---	Main reasons of time overrun was delayed possession of land i.e July 2004.
18	TC Lucknow	ETD I Bareilly	132 KV SS Faridpur	05.04.06	1x20 MVA	585	04/06	04/06	09/07	06/08	1x20	544.21	9	---	No reasons available on records.

1	2	3	4	5	6	7	8	9	10	11	12	13	14	15	16
19	TC Lucknow	765KV Transmission Division Unnao	765KV sub-station	05/09	2x1000	55000	05/09	03/10	03/11	01/12	1x1000	17000	10	---	No reasons available on records.
20	TE Varanasi	ETD Basti	132 kV sub-station Mehdawal	01/07	2x20	640.04	01/07	02/07	12/07	08/11	2x20	455.93	44	---	No reasons available on records.
21	TE Varanasi	Do	132 kV SS Navgarh	01/07	2x20	640.04	01/07	02/07	12/07	11/09	2x20	628.04	23	---	SS was kept back energised 11/09 and put to commercial use in 03/11 after completion of associated line
22	TE Varanasi	ETD-I Varanasi	132KV Chauri, SR Nagar (Bhadoi)	April 1998	2x20	351.60	04/98	04/98	04/99	09/08	2x20	235.95	113	---	Funds for Construction of S/S and line was provided (2001) by Government which was returned back in 2002 as SS and line could not be constructed in time.
23	TE Varanasi	ETD-Jaunpur	132KV Mariyahaun SS	05.04.06	1x20	511.39	04/06	05/07	04/07	01/09	1x20	342.40	21	---	No reasons available on records.
24	TE Varanasi	Do	132KV badalapur SS	19.09.05	1x20	343.17	09/05	10/07	09/06	01/09	1x20	184.16	28	---	No reasons available on records.
25	TE Varanasi	ETD-Azamgarh	132KV Dighar SS Ballia	25.07.06	1x20	604.00	07/06	07/06	07/07	08/09	1x20	667.30	25	63.30	No reasons available on records.
26	TE Varanasi	ETD-II Allahabad	132KV Karchhana, Allahabad	05.04.06	2x20	679.64	04/06	04/06	04/07	11/08	2x20	1085.89	19	406.25	Delayed as 11KV line was passing through the land where switchyard was to be constructed
27	TE Varanasi	Do	132KV SS Manjhanpur Kaushambi	05.04.06	1x20	401.13	04/06	04/06	04/07	09/08	1x20	669.20	17	268.07	Do

1	2	3	4	5	6	7	8	9	10	11	12	13	14	15	16
28	TE Varanasi	Do	132KV Telarganj Allahabad	SS 25.07.06	2x40	923.36	07/06	07/06	07/07	09/10	2x40	1069.00	38	145.64	Delay in possession of land as it was defence land. SS was idle for 10 months for want of feeder line.
29	TE, Varanasi	ETD-I Allahabad	132 kV Patti, Pratapgarh	SS 1999- 2000	1x20	361.51	12/2000	12/2000	12/01	03/07	1x20	310.96	63	---	Main reasons of time overrun was delayed allotment required material by headquarter
30	TE, Varanasi	ETD-II, Varanasi	132 kV Kasimabad	SS 04/2006	2x20	685	04/06	04/06	04/07	10/10	2x20	778.80	42	93.80	Delayed start of work by contractor resulted in abnormal delay.
31	T/S Agra	ETD-I Kanpur	220KV Bithoor	SS 07/2008	2x160+ 2x40	5113.00	07/08	07/08	01/10	07/11	2x160+ 2x40	5175.00	18	62.00	No reasons available on the records
32	T/S Agra	ETD-II Kanpur	220KV Kanpur South	SS 10/2009	3x60	3692.00	10/09	10/09	04/11	04/11	3x60	4665.00	---	973.00	No reasons available on the records
33	T/S Agra	Do	132KV MSKP	SS 08/08	2x40	1560.66	08/08	08/08	08/09	12/10	2x40	1943.66	16	383.00	No reasons available on the records
34	T/S Agra	ETD-I Agra	132KV Fatehabad	SS 01/07	2x40	917.00	01/07	01/07	01/08	10/08	2x40	1061.25	09	144.25	No reasons available on the records
35	T/S Agra	Do	132KV Bhimmagari	SS 04/08	2x20	906.95	04/08	04/08	04/09	05/09	2x20	532.48	01	---	No reasons available on the records
36	T/S Agra	Do	220KV Samshabad	SS 01/08	2x160	3567.13	01/08	01/08	07/09	06/10	2x160	1658.73	11	---	No reasons available on the records
37	T/S Agra	ETD-Mathura	132KV Mathura-II	SS 08/08	2x40	1126.80	08/08	08/08	09/09	01/10	2x40	687.61	04	---	No reasons available on the records
38	T/S Agra	Do	132KV Manth	SS 07/08	2x20	1008.07	07/08	07/08	07/09	05/10	2x20	236.40	10	---	No reasons available on the records
39	T/S Agra	Do	132KV Sasni	SS 07/07	2x20	866.88	07/07	07/07	07/08	08/09	2x20	303.74	13	---	No reasons available on the records
			Total of cost over run/ range of time over run in months (lowest-highest)										1 (at SI No 35) - 216 (at SI No 15)	4182.51	

Annexure-9
Statement showing details of Time and Cost overrun in construction of line
(Referred to in paragraph 2.1.11)

Sl No	Name of Zone	Division	Particulars	Date of approval by TWC ³⁸	Length of line (Km)	Estimated cost (₹ in lakh)	Scheduled Date of Start	Actual Date of Start	Scheduled Date of Completion	Actual Date of Completion	Qty executed	Actual expenditure (₹ in lakh)	Time overrun (in months)	Cost Overrun (₹ in lakh)	Reasons for time and cost overrun
1	2	3	4	5	6	7	8	9	10	11	12	13	14	15	16
1	TW Meerut	ETD- Muza farrnagar	132KV LILO of Shamli-manauta line	06.11.04	2	53.42	11/04	11/04	12/05	06/09	2	50.61	42	---	ROW problems and delay in permission of railway crossing.
2	TW Meerut	ETD-I Ghaziabad	220KV DC Loni- Muradnagar line(25Km) and 220KV SC line from DC tower of (on DC Tower) 220KV Loni Muradnagar(near 400KV S/S Muradnagar) to 400KV Murad Nagar (5 Km)	25.07.06	2x25Km +1x5Km	873.59	07/06	07/06	07/07	10/08	30.03	2001.68	15	1128.09	Time overrun due to ROW problems led to cost overrun.
3	TW Meerut	ETD-I Ghaziabad	132Kv LILO line of 132KV Mohan Nagar Meerut Road SC line at 220KV Loni	25.07.06	25	472.46 (376.8)	07/06	07/06	07/07	07/09	19.90	713.50	24	336.70	Time overrun resulted in cost overrun.
4	TW Meerut	ETD- Noida	220KV Greater Noida-Sector- 129 DC line	30.08.07	25	1232.71 (1084.78)	08/07	08/07	12/08	06/11	22	1084.39	30	---	Time overrun due to ROW problems and forest clearance.
5	TW Meerut	ETD-Noida	132KV DC Noida Sector 62- Noida line	30.08.07	01	35.40	08/07	08/07	05/08	03/09	1	40.22	10	4.82	Time overrun due to ROW problems and forest clearance.
6	TW Meerut	ETD-Noida	132KV SC Noida (220KV)- Surajpur LILO at Noida-V	25.07.06	07	234.52	07/06	07/06	12/06	05/07	07	204.44	5	---	Time overrun due to ROW problems and forest clearance.

³⁸ TWC stands for Transmission Works Committee

1	2	3	4	5	6	7	8	9	10	11	12	13	14	15	16
7	TW Meerut	ETD-I Moradabad	220KV LILO of Moradabad-NAPP	18.05.05	4	128.00 (52.48)	05/05	05/05	02/06	05/10	1.64	197.66	51	145.18	Delay due sever ROW problems
8	TW Meerut	ETD-I Moradabad	132KV Sambhal-Chandausi	18.05.05	30	384.60 (333.32)	05/05	05/05	05/06	10/10	26	481.77	53	148.45	Delay due sever ROW problems
9	TW Meerut	ETD-I Moradabad	132KV SC line from 132KV S/S Shambhal to 220KV Shambhal	18.05.05	10	128.20 (123.97)	05/05	05/05	05/06	01/11	9.67	195.08	58	71.11	Delay due sever ROW problems
10	TW Meerut	ETD-Bijnore	132 kV Roorkee-Nehaur Line	Proposed in VIIIth Plan	1	33.07	09/91	09/91	03/94	03/09	4	NA	181	---	Do
11	TW Meerut	ETD-II Ghaziabad	132 kV SC Simbhaul-Hapur II line	04/2002	20	433.62	04/2002	03/04	03/04	07/09	20	350.05	64	---	Time run was due to delayed supply of required material from the headquarters.
12	TW Meerut	ETD-II Ghaziabad	132 kV S/C Hapur I-II line	04/2002	14	Included in above	04/2002	03/04	03/04	07/09	Included in above	Included in above	64	---	Do
13	TC, Lucknow	ETD-II Gomtinagar	220KV LILO of Sarojnagar line at 220KV Gomtinagar S/S	15.09.06	15	271.00	09/06	09/06	06/07	11/08	15	432.43	17	161.43	Delay in finalisation of site for SS
14	TC, Lucknow	ETD-II Gomtinagar	LILO of 132KV barabanki-Roza Goan Chinni Mill at R S Ghat S/S	27.08.08	1.25	79.17	08/08	08/08	05/09	01/09	1.25	89.80	---	10.63	No reasons on records
15	TC, Lucknow	ETD-Faizabad	220KV LILO from Sultanpur to Gonda line	11.12.01	30	860.40 (753.71)	12/01	05/07	12/02	12/09	26.28	1287.13	78	533.42	Due to Forest clearance
16	TC, Lucknow	ETD-Hardoi	132KV SC Bangar mau-Chakalwansi	17.01.08	35	656.60 (722.26)	01/08	09/08	01/09	10/11	38.50	778.96	32	56.70	Do
17	TC Lucknow	ETD-I Bareilly	132 KV LILO line (Dohan to Richha)	Approved by CEA on 1990	2	34 (102)	11/90	11/90	1991	10/09	6	201.83	216	99.83	Main reason of cost overrun was change in length of line.
18	TC Lucknow	ETD-II Bareilly	220 KV LILO C.B. Ganj-Bareilly line	07/06	5	245	07/06	12/06	03/07	10/08	5	268.25	19	23.25	No reasons available on records.

1	2	3	4	5	6	7	8	9	10	11	12	13	14	15	16
19	TC Lucknow	ETD-II Bareilly	132 KV SC Pilibhit - Pooranpur line	Approved by CEA on 11/90	40	371 (361.73)	11/90	11/90	11/91	01/08	39	694.48	193	332.75	Main reasons of time overrun was delayed possession of land i.e July 2004 due to which cost was also escalated.
20	TE Varanasi	ETD-Basti	132 KV SC Basti-Naugarh line	01/07	30	612.93	01/07	01/07	03/08	03/11	30	623.86	36	10.93	Main reason of time overrun and cost overrun was addition requirement of 3 nos. of piles foundation of river crossing and also ROW problem.
21	TE Varanasi	ETD-I Varanasi	132KV DC line from Bhadoi to Aurai	April 1998	7.87	120.80 (115.12)	04/98	06/98	01/99	08/08	7.5	123.66	115	8.54	Do
22	TE Varanasi	ETD-Jaunpur	132KV DC LILO at SS Mariyahaun	05.04.06	10	268.80	04/06	04/06	04/07	05/08	0.2	NA	13	----	No reasons available on records.
23	TE Varanasi	ETD-Jaunpur	132 KV SC Jaunpur-Badlapur Line	19.04.06	30	384.60	04/06	10/07	04/07	03/09	24.77	26.28	23	----	No reasons available on records.
24	TE Varanasi	ETD-II Allahabad	132KV SC Ballia-Dighar Line	25.07.06	40	743.00	07/06	7/06	07/07	08/09	40	775.44	25	32.44	No reasons available on records.
25	TE Varanasi	ETD-II Allahabad	132KV SC Rewa Road - Karchhana	05.04.06	15	201.74 (321.04)	04/06	04/06	04/07	11/08	23.87	1096.09	19	775.05	No reasons were on the records
26	TE Varanasi	ETD-II Allahabad	132KV SC Sirathu-Manjhanpur	05.04.06	15	201.74 (231.60)	04/06	04/06	04/07	09/08	17.22	551.75	17	320.15	Do
27	TE Varanasi	ETD-II Allahabad	132KV DC Phoolpur Telarganj and Special River X-ing	25.07.06	35	1494.26 (1402.04)	07/06	07/06	07/07	09/10	32.84	2841.18	38	1439.14	Main reason of cost overrun was delay in construction of river crossing and increase in cost.
28	TE, Varanasi	ETD-I Allahabad	132 KV Patti-Pratapgarh line	1999-2000	30	284.70	12/2000	12/2000	12/01	11/07	30	556.13	71	271.43	Main reasons of cost overrun of line was delayed payment of pending bills of contractor causing the work to stop by more than two years.

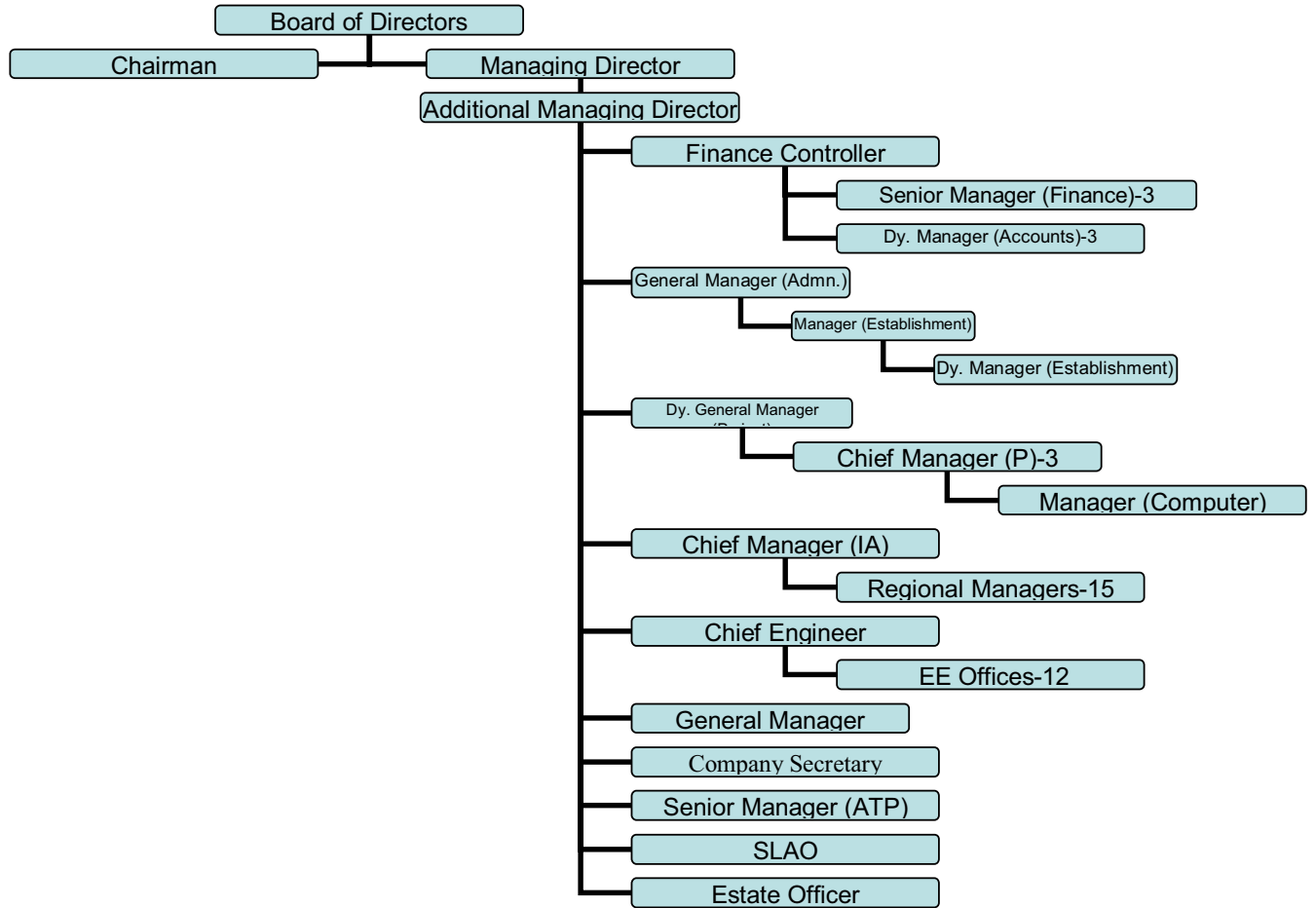
1	2	3	4	5	6	7	8	9	10	11	12	13	14	15	16
29	TS Agra	ETD-I Kanpur	LILO of 220KV DC Panki-Unnoa line	07/2008	10	500.00 (250.00)	07/08	07/08	07/09	06/11	5	302.69	24	52.69	No reasons available on the records
30	TS Agra	ETD-II Kanpur	LILO of 220KV DC Panki-Fatehpur line	10/2009	3.5	166.14	10/09	10/09	07/10	04/11	3.5	211.00	09	44.86	No reasons available on the records
31	TS Agra	ETD-II Kanpur	132KV LILo of Panki-Naubasta line	08/2008	10	323.50 (10.45)	08/08	08/08	08/09	09/10	0.323	21.00	13	10.55	No reasons available on the records
32	TS Agra	ETD-I Agra	132KV DC Agra-Fatehabad line	01/2007	23	441.00	01/07	01/07	01/08	12/08	23	741.63	11	300.63	No reasons available on the records
33	TS Agra	ETD-I Agra	132KV DC LILo Agra-Samsabad line	04/2008	08	264.56	04/08	04/08	01/09	08/09	08	167.83	07	----	No reasons available on the records
34	TS Agra	ETD-I Agra	220KV LILo Agra-Firozabad line	01/2008	18	1201.45	01/08	01/08	01/09	11/10	25	440.48	22	----	No reasons available on the records
35	TS Agra	ETD- Mathura	132KV SC tapping of Mathura Kosi line	08/2008	8	255.40	08/08	08/08	09/09	07/10	8.10	142.81	10	----	No reasons available on the records
36	TS Agra	ETD- Mathura	132KV DC LILo of 132KV Mathura Kosi line	08/2008	8	258.80	08/08	08/08	09/09	01/10	8.90	130.38	04	----	No reasons available on the records
37	TS Agra	ETD- Mathura	132KV DC Gokul - Meetai line	07/2008	25	808.75	07/08	07/08	03/09	05/10	16.80	420.25	14	----	No reasons available on the records
38	TS Agra	ETD- Mathura	132KV Mitai-Sasani line	07/2007	25	469.00	07/07	07/07	07/08	08/09	6.1	70.52	13	----	No reasons available on the records
			Total of cost over run/ range of time over run in months (lowest-highest)										4 (at SI No.36) - 216 (at SI No.17)	6318.77	

Note: Figures in Col. No 7 as shown in brackets indicated the estimated cost of length of line actually constructed. In such cases, cost overrun has been worked out by taking estimated cost vis-a-vis actual expenditure of matching length of line.

Annexure-10
Statement showing details of wrong calculation of equated price for counter offer
(Referred to in paragraph 2.1.19)

SL No	Material	Qty	Tender No	Date of opening of Part-II	Rate (₹ in lakh)	Name and Status of Firm (Within U P/Outside U P)	Qty offered to L ₁	VAT/CST/ED	VAT/CST/ED included in Rates	Name and Status of Firms (Within U P/Outside U P) for counter offer	Qty offered	VAT/CST/ED included in Rate in counter Offer	Differential Amount due to VAT/CST/ED	Amount (₹ in lakh)
1	2	3	4	5	6	7	8	9	10	11	12	13	14	15
1	40MVA T/F	67	ESD-285	13.07.10	328.82	Accurate Transformer Ltd Lucknow (Within U P)	20	VAT	₹21.32 lakh (VAT 13.5 per cent)	TARIL	10	₹ 3.40 lakh (two per cent CST)	₹ 17.21 lakh	172.10
										ABB	9	₹ 3.33 lakh	₹ 16.86 lakh	151.74
										EMCO	7	₹ 3.35 lakh	₹ 16.96 lakh	118.72
										BBL, Thane	5	₹ 3.42 lakh	₹ 17.33 lakh	86.65
										IMP, Thane	5	₹ 3.40 lakh	₹ 17.23 lakh	86.15
										ADITYA	4	₹ 3.35 lakh	₹ 16.95 lakh	67.80
										ECE	5	₹ 3.43 lakh	₹ 17.38 lakh	86.90
										EURO	2	₹ 3.39 lakh	₹ 17.16 lakh	34.32
2	ACSR Basimis Conductor	5200 KM	ETD/08-09/10	26.11.10	2.73	Ganmon India Ltd, Silwasa	2000 KM	ED/CST	₹24.39 lakh (ED-10.30 per cent) ₹ 0 (CST-NIL)	Terracon Ltd (Works at Uttarakhhand)	3200 KM	0 (ED-NIL) ₹ 2,616 (CST-one per cent)	Sub Total 24426	804.38
3	63MVA T/F	21	ESD-303	08.11.11	411.71	ECE Ltd, Haryana	02	ED/CST	₹18.75 lakh (ED-10.30 per cent) ₹4.01 lakh (CST-two per cent)	Accurate Transformer Ltd (Works at Uttarakhhand)	02	0 (ED NIL) ₹ 2.07 lakh (CST one per cent)	Sub Total ₹ 21.21 lakh	781.63
										IMP Power Ltd, Mumbai	08	0 (CST NIL)	₹ 3.56 lakh	28.48
4	63MVA T/F	17	ESD-297	23.12.10	414.50	BBL Thane	06	ED/CST	₹19.00 lakh (ED-10.30 per cent) ₹4.07 lakh (CST-two per cent)	IMP Power Ltd, Mumbai	03	₹ 18.23 lakh (ED-10.30 per cent) 0 (CST-NIL)	Sub Total ₹ 3.54 lakh	70.90
										BBL Thane	08	₹ 7.09 lakh (CST-three per cent)	₹ 3.86 lakh	10.62
5	40MVA T/F	55	ESD-241	04.10.07	400.42	Technical Associates Ltd	15	Trade Tax	₹12.73 lakh (TT-five per cent)	BBL Thane	08	₹ 7.09 lakh (CST-three per cent)	Sub Total ₹ 3.86 lakh	30.88
6	Earth wire	3011 KM	TD-359	18.11.11	0.39550	Manoharlal-Hiralal, Ghaziabad	807 KM	VAT	₹1,431 (VAT- Four per cent)	Nirmal Wire Ltd, Kolkata	1102	₹ 726 (CST-two per cent)	Sub Total ₹ 634	30.88
										UJC Udyog Kolkata	1102	₹ 726 (CST-two per cent)	₹ 634	6.99
													Sub Total	13.98
													Grand Total	1712.39

Annexure-11
Flow chart showing the organisational Set up of the
Uttar Pradesh State Industrial Development Corporation Limited
(Referred to in paragraph 2.2.2)



Annexure-12
Statement showing loss of interest on payments made to contractors
(Referred to in paragraph 2.2.20)

Sl. No.	C.B. No.	Date	Name of Contractor	Cheque No.	Date	Amount paid	Amount adjusted	Date of adjustment	Amount unadjusted	Amount of Interest @ 10 per cent up to 31 March 2012
1	2	3	4	5	6	7	8	9	10	11
1	22/2004-05	24 January 2005	Gulshan Rai Jain-II	472589	03 May 2006	5.45	0	-	5.45	3.40
2	12/2005-06	28 September 2005	A-Z Technologies	472581	21 April 2006	56.70	56.70	27 November 2007	0	9.10
3	17/2005-06	22 October 2005	R.G. Buildwell (P) Ltd.	472599	15 May 2006	47.53	47.53	12 January 2009	0	12.67
4	18/2005-06	22 October 2005	Raj Shiyama Construction (P) Ltd.	472553	24 March 2006	78.50	78.50	28 January 2009	0	22.39
5	21/2005-06	27 October 2005	Jyoti Buildtech (P) Ltd	472600	17 May 2006	200.15	0	-	200.15	117.63
6	23/2005-06	27 October 2005	Jyoti Buildtech (P) Ltd	472602	26 May 2006	55.07	0	-	55.07	32.29
7	33/2005-06	18 November 2005	Gupta Associates	472608	31 May 2006	65.09	0	-	65.09	38.00
8	01/2007-08	09 January 2006	Gupta Associates	482154	24 November 2006	16.53	16.53	11 December 2007	0	1.73
9	01/2007-08	12 April 2006	Gupta Associates	482153	24 November 2006	83.53	4.70	18 January 2008	78.83	42.74
10	04/2007-08	05 April 2007	Gupta Associates	832556	17 April 2007	21.40	21.40	20 September 2007	0	0.92
11	08/2007-08	05 April 2007	Gupta Associates	832564	26 April 2007	95.11	95.11	30 November 2007	0	5.71
12	24/2005-06	12 April 2007	Gupta Associates	832555	17 April 2007	85.46	85.46	20 September 2007	0	3.68
13	21/2006-07	23 November 2005	Kanti Prasad Mittal	472610	31 May 2006	63.45	1.48	18 January 2008	61.98	36.43
14	25/2006-07	15 November 2006	Kanti Prasad Mittal	832539	23 March 2007	78.32	78.32	18 September 2007	0	3.86
15	33/2006-07	20 December 2006	Kanti Prasad Mittal	832531	13 December 2006	62.71	62.71	25 October 2007	0	5.45
16	42/2006-07	28 March 2007	Kanti Prasad Mittal	832565	14 March 2007	26.61	26.61	16 March 2009	0	5.34
17	32/2005-06	16 December 2005	Royal Construction Co.	832522	01 March 2007	26.92	26.92	26 September 2007	0	1.14
18	04/2006-07	14 June 2006	Royal Construction Co.	482152	24 November 2006	36.80	36.80	14 January 2008	0	3.23
19	26/2006-07	27 November 2006	Royal Construction Co.	832521	01 March 2007	20.44	20.44	24 July 2008	0	3.40
20	05/2006-07	14 June 2006	Royal Construction Co.	832521	01 March 2007	21.45	21.46	24 July 2008	0	3.00
21	06/2006-07	10 July 2006	D.B Garden Traders	482199	24 January 2007	61.58	61.58	07 March 2008	0	6.88
22	15/2006-07	06 October 2006	Chetan Associates	832501	01 February 2007	35.97	35.97	17 December 2007	0	3.15
				482156	24 November 2006	26.10	26.10	04 August 2009	0	7.04
				482146	09 November 2006	70.75	43.00	06 June 2008	0	6.77
						0	27.76	10 October 2007 & 02 November 2007	0	2.62
						22.45	22.45	02 November 2007 & 14 January 2008	0	2.17
23	27/2006-07	27 November 2006	Chetan Associates	482155	24 November 2006	35.40	35.40	21 April 09	0	7.95
24	05/2007-08	12 April 2007	Chetan Associates	832558	18 January 2007	122.93	122.93	31 May 2008	0	13.61
25	07/2007-08	12 April 2007	Chetan Associates	832560	23 April 2007	50.61	50.61	18 October 2007	0	2.48
26	16/2006-07	10 October 2006	Siraj Construction Co.	832504	14 February 2007	21.02	21.02	28 January 2009	0	4.12
27	17/2006-07	30 October 2006	Indian Trading Co.	832523	01 March 2007	35.89	35.89	10 December 2008	0	6.39
28	19/2006-07	30 October 2006	Indian Trading Co.	832536	23 March 2007	27.41	27.41	10 December 2008	0	4.72
29	23/2006-07	03 November 2006	Manohar Lal & Co.	832520	01 March 2007	21.51	21.51	02 April 2008	0	2.35
				482190	23 January 2007	52.32	26.57	30 December 2008	0	5.15
30	24/2006-07	27 November 2006	S.K. Builders	482191	23 January 2007	0	25.74	30 December 2008	0	4.99
31	37/2006-07	02 January 2007	S.K. Builders	832514	15 February 2007	62.99	62.99	30 December 2008	0	12.20
32	28/2006-07	27 November 2006	M/s Paras Construction	482186	18 January 2007	52.30	52.30	23 October 2007	0	3.60
						40.50	40.50	21 April 2009	0	9.14

(₹ in lakh)

1	2	3	4	5	6	7	8	9	10	11
33	06/2007-08	12 April 2007	Paras Construction	832559	23 April 2007	51.40	51.40	20 July 2007	0	1.25
34	09/2007-08	12 April 2007	Paras Construction	832561	23 April 2007	98.40	98.40	04 October 2007	0	4.45
35	34/2006-07	02 January 2007	OP Gupta Construction (P) Ltd.	832532	14 March 2007	26.41	26.41	16 March 2009	0	5.30
36	35/2006-07	02 January 2007	OP Gupta Construction (P) Ltd.	832513	15 February 2007	62.60	62.60	21 January 2009	0	12.11
37	39/2006-07	15 February 2007	Kishore Enterprises	832537	23 March 2007	60.97	0	-	60.97	30.67
38	40/2006-07	23 February 2007	Maa Kela Enterprises	832527	12 March 2007	57.61	57.61	13 July 2007	0	1.96
39	43/2006-07	29 March 2007	Sun Grow Nursery	832566	01 May 2007	52.99	52.99	19 July 2007	0	1.16
40	21/2005-06	27 October 2005	Jyoti Buildtech (P) Ltd (Mob. Advance)		25 November 2005	188.56	152.28	13 April 2006	36.28	23.93
41	42/2006-07	28 March 2007	Kanti Prasad Mittal (Secured Advance)	832578	13 July 2007	65.18	65.18	26 September 2007 & 27 November 2007	0	1.95
Grand Total							2551.07	1987.27	563.82	540.22

Annexure-13
Statement showing unexecuted works as on 31 March 2012
(Referred to in paragraph 2.2.20)

Sl. No.	C.B. No.	Date	Name of work	Value of contract (₹ in lakh)	Schedule date of completion (with extension)	Time over run (days)	value of Executed Work (₹ in lakh)	value of un-executed Work (₹ in lakh)
1	22/2004-05	24 January 2005	Construction of Admn. Block, Guest House, Director residence at NVBQCC, Baghatpat	112.26	23 January 2006	2259	108.88	03.38
2	12/2005-06	28 September 2005	Construction of work related with infectious liquid waste water treatment plant at NVBQCC, Baghatpat	83.00	27 June 2005	2469	70.55	12.45
3	18/2005-06	22 October 2005	Construction of Road, Drain & Culvert for Group A in Residential Sector C-10 at Tronica City, Gzb.	347.01	21 April 2005	2536	277.64	69.37
4	21/2005-06	27 October 2005	Supply, Erection & Commissioning of Pumping plant and all other related works for Sump well including its O&M up to 24 months at IA, Tronica City, Gzb.	1257.09	26 October 2006	1983	826.84	430.25
5	23/2005-06	18 November 2005	Laying and jointing of Sewer line & other appurtenant works in Residential Sector C-10 at Tronica City, Gzb.	432.14	17 May 2006	2145	187.45	244.69
6	01/2006-07	12 April 2006	Construction of Tail race channel from Stilling Basin to river Yamuna for Tronica City, Gzb.	134.12	11 October 2006	1998	21.00	113.12
7	01/2007-08	05 April 2007	Construction of Roads, Drains & Culverts in C.D.F. Complex at IA Allgarh (Group-II)	252.51	04 January 2008	1548	242.78	9.73
8	08/2007-08	12 April 2007	Construction of Roads, Drains & Culverts in C.D.F. Complex at IA Allgarh (Group-I)	296.89	11 January 2008	1541	247.19	49.70
9	24/2005-06	23 November 2005	Laying and jointing of Sewer line & other appurtenant works in Residential Sector C-10 (Group-C) at Tronica City, Gzb.	348.89	22 May 2006	2140	135.02	213.87
10	39/2006-07	15 February 2007	Development of Roads, Drains & Culverts in industrial sector at growth center Dibiyapur (Group-A)	153.61	14 August 2007	1691	0	153.61
Total				3417.52			2117.55	1300.17

Annexure-14
Statement showing loss in allotment of Group Housing and Commercial Plots in Tronica City
(Referred to in Paragraph 2.2.29)

Sl. No.	Allottees Name	Plot No.	Area as per allotment letter in Sqm.	Actual area as per tracing in Sqm.	Date of Allotment	Rate of allotment	Market rate	Loss at market rate	Circle rate	Loss at circle rate
1	M/s M X S Infrastructure Pvt.Ltd.	GH/B-1	10000	12835.00	27 August 2006	3200	12000	11.29	5000	2.31
2	M/s Shyam Infrastructure (a unit of Ambika Real Estate)	GH-1/B-2	5600	6655.00	14 December 2006	3300	12000	5.80	5000	1.13
3	M/s Jantree Agro & Poultry Products Pvt.Ltd.	GH/B-5	7000	12020.90	27 September 2006	4210	12000	9.36	5000	0.95
4	M/s City Heart Developers	GH/B-6	8000	6404.20	27 September 2006	4475	12000	4.82	5000	0.34
5	M/s AMG Buildcon Pvt.Ltd.	GH-2/C-3	14000	13998.00	20 December 2006	3300	12000	12.18	5000	2.38
6	M/s Pratham Buildcon Pvt.Ltd.	GH-3/C-3	17000	17000.00	10 November 2006	3200	12000	14.96	5000	3.06
7	M/s Swameem Real Estate Pvt.Ltd.	GH/C-5	27000	24663.00	13 October 2006	4251	12000	19.11	5000	1.85
8	M/s Shardha Builders & Developers	GH/C-6	17000	15356.00	27 September 2006	4225	12000	11.94	5000	1.19
9	Sh Anil Jain	Comm C-1/A-1	800	763.00	15 December 2006	6050	15000	0.68	8000	0.15
10	M/s Aditya International	Comm C-2/A-1	600	660.00	14 December 2006	6100	15000	0.59	8000	0.13
11	M/s Mukund Developers	Comm C-3/A-1	1000	1222.00	14 December 2006	6050	15000	1.09	8000	0.24
12	M/s V.T. Construction Pvt.Ltd.	BMM /B-1	2300	2820.00	01 December 2006	6043	15000	2.53	8000	0.55
13	M/s Shree Ram Build Tech	Comm 2/B-1 (I)	680	665.00	08 January 2007	6870	15000	0.54	8000	0.08
14	M/s Rameshwar Das Infraestate Pvt.Ltd.	Comm B-2/B-2	4300	4290.00	11 December 2006	6150	15000	3.80	8000	0.79
15	Sh Rajesh Kumar Jain	Comm 2/B-2	800	1047.00	08 December 2006	5800	15000	0.96	8000	0.23
16	M/s Gaytri Construction	VMI /B-2	1500	1669.00	01 December 2006	6050	15000	1.49	8000	0.33
17	M/s Durga Infraestate Pvt.Ltd.	Multiplex /B-3	7000	9658.00	14 December 2006	6020	15000	8.67	8000	1.91
18	M/s Swameem Real Estate Pvt.Ltd.	Comm C-1/A-5&6	5000	6647.00	10 November 2006	5900	15000	6.05	8000	1.40
19	M/s Shardha Builder & Developers	Comm C-2/A-5&6	2500	2806.00	10 November 2006	5950	15000	2.54	8000	0.58
20	M/s Shristhi Builders & Developers	Comm C-3/A-5&6	6000	5495.00	17 November 2006	5800	15000	5.06	8000	1.21
21	Sh Hsrish Kumar	Comm 1/C-2 (K. E.)	800	921.00	01 August 2007	6700	15000	0.76	8000	0.12
22	M/s Akash Builders	Comm 2/C-2 (K. E.)	600	643.00	01 August 2007	6725	15000	0.53	8000	0.08
23	Sh Bhisim Tyagi	Comm 3/C-2 (K. E.)	600	800.00	01 August 2007	6810	15000	0.66	8000	0.10
24	Sh Devendra Kumar Tyagi	Comm 4/C-2 (K. E.)	1000	1227.00	01 August 2007	6815	15000	1.00	8000	0.15
25	M/s Yark International	Comm. C-5/C-2	450	441.00	02 December 2007	6500	15000	0.37	8000	0.06
26	Sh K K Ahuja	Comm2/C-7	2000	2009.00	01 April 2007	7001	15000	1.61	8000	0.20
27	M/s Gaytri Builders	Comm 3/C-7	2000	2117.00	01 August 2007	6760	15000	1.74	8000	0.26

Sl. No.	Allottees Name	Plot No.	Area as per allotment letter in Sqm.	Actual area as per tracing in Sqm.	Date of Allotment	Rate of allotment	Market rate	Loss at market rate	Circle rate	Loss at circle rate
28	Sh Rajesh Kumar Khanna	Comm1 4/C-7	900	673.00	01 August 2007	6350	15000	0.58	8000	0.11
29	M/s V. T. Construction	Comm1 5/C-7	2000	1805.00	01 August 2007	6900	15000	1.46	8000	0.20
30	Smt. Shweta Vats	NH-2/ B-1 (Res.)	500	500	23 March 2007	7220	15000	0.39	8000	0.04
31	M/s Swameem Real Estate (P) Ltd.	Comm"F"/B-1(Res.)	5550	5548.00	02 December 2007	7000	15000	4.44	8000	0.55
32	Sh Sandeep Vij	Comm1 3/B-1 (Res)	1200	1209.00	01 August 2007	6700	15000	1.00	8000	0.16
33	M/s Metro Infotech Pvt.Ltd	Comm1 4/B-1 (Res)	1800	4328.00	01 August 2007	7555	15000	3.22	8000	0.19
34	M/s Explore Buildwell Pvt. Ltd.	CF-2/Sector-11	1000	1000.00	13 March 2007	11500	15000	0.35	8000	0
35	M/s Mayank Investment Pvt.Ltd	Comm1 2/C-4 (Res)	1500	1500.00	01 November 2007	6600	15000	1.26	8000	0.21
36	M/s Ashadeep Infrastructure (P) Ltd.	Comm. 3/C-4	1500	1500.00	02 December 2007	6610	15000	1.26	8000	0.21
37	M/s R.N.P.M. Developers	Comm. 4/C-4	1500	1500.00	02 September 2007	7300	15000	1.16	8000	0.11
38	M/s M.S.X. Infocom (P) Ltd.	Comm. 5/C-4	1500	1500.00	02 December 2007	7200	15000	1.17	8000	0.12
39	M/s M.S.X. Infocom (P) Ltd.	Comm. 6/C-4	1500	1500.00	02 December 2007	7100	15000	1.19	8000	0.14
40	M/s Om Investment Pvt. Ltd.	Comm1 7/C-4	1500	1500.00	03 August 2007	7400	15000	1.14	8000	0.09
41	M/s P.K.G. Estate Pvt. Ltd.	Comm. 12A/C-4	1500	4200.00	02 December 2007	6600	15000	3.54	8000	0.59
42	M/s P.K.G. Estate Pvt. Ltd.	Comm. 14/C-4	1500		02 December 2007	6550		0	8000	0
Total								152.29		24.50

Annexure-15
Difference of Award of higher rates for power purchase
(Referred to in paragraph 3.4.5)

Contract Period	Units to be Purchased*	Rates of Lanco (₹/Kwh)	Amount (in ₹)	Amount ₹ in crore (column 4 /1000000)	Contract Period	Units to be Purchased	Rates of JAL (₹ /Kwh)	Amount (in ₹)	Amount ₹ in crore (column 9 /1000000)	Difference (in crore ₹)
30.12.12 to 31.03.13	3638784000	1.886	6862746624	686.27	8.09.13 to 31.03.14	8108160000	2.069	16775783040	1677.58	991.31
01.04.13 to 31.03.14	14436480000	1.887	27241637760	2724.16	1.04.14 to 31.03.15	14436480000	2.556	36899642880	3689.96	965.8
1.04.14 to 31.03.15	14436480000	2.039	29435982720	2943.6	01.04.15 to 31.03.16	14436480000	2.542	36697532160	3669.75	726.15
01.04.15 to 31.03.16	14436480000	2.119	30590901120	3059.09	01.04.16 to 31.03.17	14436480000	2.565	37029571200	3702.96	643.87
01.04.16 to 31.03.17	14436480000	2.203	31803565440	3180.36	01.04.17 to 31.03.18	14436480000	2.588	37361610240	3736.16	555.8
01.04.17 to 31.03.18	14436480000	2.277	32871864960	3287.19	01.04.18 to 31.03.19	14436480000	2.621	37838014080	3783.8	496.61
01.04.18 to 31.03.19	14436480000	2.355	33997910400	3399.79	01.04.19 to 31.03.20	14436480000	2.66	38401036800	3840.1	440.31
01.04.19 to 31.03.20	14436480000	2.441	35239447680	3523.94	01.04.20 to 31.03.21	14436480000	2.709	39108424320	3910.84	386.9
01.04.20 to 31.03.21	14436480000	2.533	36567603840	3656.76	01.04.21 to 31.03.22	14436480000	2.768	39960176640	3996.02	339.26
01.04.21 to 31.03.22	14436480000	2.65	38256672000	3825.67	01.04.22 to 31.03.23	14436480000	2.896	41808046080	4180.8	355.13
01.04.22 to 31.03.23	14436480000	2.759	39830248320	3983.02	01.04.23 to 31.03.24	14436480000	3.031	43756970880	4375.7	392.68
01.04.23 to 31.03.24	14436480000	2.893	41764736640	4176.47	01.04.24 to 31.03.25	14436480000	3.175	45835824000	4583.58	407.11
01.04.24 to 31.03.25	14436480000	3.018	43569296640	4356.93	01.04.25 to 31.03.26	14436480000	3.32	47929113600	4792.91	435.98
01.04.25 to 31.03.26	14436480000	3.023	43641479040	4364.15	1.04.26 to 31.03.27	14436480000	3.473	50137895040	5013.79	649.64
1.04.26 to 31.03.27	14436480000	3.186	45994625280	4599.46	01.04.27 to 31.03.28	14436480000	3.639	52534350720	5253.44	653.98
01.04.27 to 31.03.28	14436480000	3.36	48506572800	4850.66	01.04.28 to 31.03.29	14436480000	3.819	55132917120	5513.29	662.63
01.04.28 to 31.03.29	14436480000	3.545	51177321600	5117.73	01.04.29 to 31.03.30	14436480000	3.998	57717047040	5771.7	653.97
01.04.29 to 31.03.30	14436480000	3.744	54050181120	5405.02	01.04.30 to 31.03.31	14436480000	4.202	60662088960	6066.21	661.19
01.04.30 to 31.03.31	14436480000	4.025	58106832000	5810.68	01.04.31 to 31.03.32	14436480000	4.419	63794805120	6379.48	568.8
01.04.31 to 31.03.32	14436480000	4.311	62235665280	6223.57	01.04.32 to 31.03.33	14436480000	4.641	66999703680	6699.97	476.4
01.04.32 to 31.03.33	14436480000	4.588	66234570240	6623.46	01.04.33 to 31.03.34	14436480000	4.886	70536641280	7053.66	430.2
01.04.33 to 31.03.34	14436480000	4.897	70695442560	7069.54	01.4.34 to 31.03.35	14436480000	5.148	74318999040	7431.9	362.36
01.4.34 to 31.03.35	14436480000	5.207	75170751360	7517.08	01.4.35 to 31.03.36	14436480000	5.428	78361213440	7836.12	319.04
01.4.35 to 31.03.36	14436480000	5.501	79415076480	7941.51	01.4.36 to 31.03.37	14436480000	5.723	82619975040	8262	320.49
01.4.36 to 31.03.37	14436480000	5.815	83948131200	8394.81	01.4.37 to 31.03.38	14436480000	6.042	87225212160	8722.52	327.71
01.4.37 to 30.12.37	10837248000	6.106	66172236288	6617.22	01.4.38 to 08.09.38	6367872000	6.636	42257198592	4225.72	-2391.5
				123338.14					134169.96	10831.82

Note: The loss has been worked out with reference to the original agreement with JAL effective from 30 December 2012 (without considering escalation admissible under the contract). The plant is, however, yet to be installed. The loss may undergo revision with the change in periodicity of the agreement.

Annexure-16
Statement showing loss due to acceptance of rates below the
Indicative Reserve Input Rates (BST)
(Referred to in paragraph 3.6.6)

Year	Indicative BST (₹ per unit)	Negotiated rate quoted by TPL (₹ per unit)	Difference of Rate (₹ per unit)	Energy purchased (MU)	Loss of revenue (Amount: in ₹)
2010-11	1.91	1.54	0.37	2034.68	752831600
2011-12	1.96	1.55	0.41	1980.54	812021400
Sub-Total					1564853000
2012-13	2.00	1.71	0.29	1893	548970000
2013-14	2.06	1.89	0.17	1948	331160000
2014-15	2.1	2.00	0.1	2005	200500000
2015-16	2.13	2.1	0.03	2094	62820000
2016-17	2.15	2.11	0.04	2188	87520000
2017-18	2.17	2.14	0.03	2287	68610000
2018-19	2.19	2.16	0.03	2390	71700000
2019-20	2.21	2.17	0.04	2499	99960000
2020-21	2.23	2.2	0.03	2616	78480000
2021-22	2.25	2.2	0.05	2740	137000000
2022-23	2.27	2.2	0.07	2870	200900000
2023-24	2.28	2.2	0.08	3006	240480000
2024-25	2.3	2.2	0.1	3150	315000000
2025-26	2.32	2.21	0.11	3305	363550000
2026-27	2.33	2.22	0.11	3469	381590000
2027-28	2.35	2.22	0.13	3641	473330000
2028-29	2.36	2.22	0.14	3823	535220000
2029-30	2.38	2.23	0.15	4015	602250000
Grand Total					6363893000

Annexure-17

Statement showing loss of revenue due to unjustified changes in ATR and allowing lower benefit of increase in Tariff (Referred to in paragraph 3.6.8)

(Figures in column 2 to 6 and 9 to 12 are rates per unit in ₹)

Month	Computation by Audit taking Base year ATR of ₹ 3.98 per unit and with increase of ₹ 0.51 per unit as first Tariff increase					Computation in billing taking Base year ATR of ₹ 4.59 per unit and with increase of ₹ 0.26 per unit in first ATR							
	ATR	Base year ATR	TIR	Input Rate	Effective Rate	Energy drawn (MU)	Bill amount (₹ in crore)	Base year ATR	TIR	Input Rate	Effective Rate	Energy drawn (MU)	Bill amount (₹ in crore)
1	2	3	4 (3/2)	5	6 (4x5)	7	8 (6x7)	9	10 (2/9)	11	12 (10x11)	13 (12x13)	14 (12x13)
1.4.10 to 14.4.10	4.22	3.98	1.06	1.54	1.63	79.50	12.96	3.98	1.06	1.54	1.63	79.50	12.96
15.4.10 to 30.4.10	4.81	3.98	1.21	1.54+0.51	2.48	89.52	22.20	4.59	1.05	1.80*	1.89	89.52	16.92
May 2010	4.77	3.98	1.20	1.54+0.51	2.46	188.174	46.29	4.59	1.04	1.80	1.87	188.174	35.19
June 2010	4.77	3.98	1.20	1.54+0.51	2.46	189.113	46.52	4.59	1.04	1.80	1.88	189.113	35.55
July 2010	4.79	3.98	1.20	1.54+0.51	2.46	199.198	49.00	4.59	1.04	1.80	1.88	199.198	37.45
Aug 2010	4.83	3.98	1.21	1.54+0.51	2.48	187.164	46.42	4.59	1.05	1.80	1.87	187.164	35.37
Sep 2010	4.84	3.98	1.22	1.54+0.51	2.50	174.19	43.55	4.59	1.05	1.80	1.90	174.19	33.10
Oct 2010	4.83	3.98	1.21	1.54+0.51	2.48	163.463	40.54	4.59	1.05	1.80	1.89	163.463	30.89
Nov 2010	4.82	3.98	1.21	1.54+0.51	2.48	140.941	34.95	4.59	1.05	1.80	1.89	140.941	26.64
Dec 2010	4.79	3.98	1.20	1.54+0.51	2.46	150.333	36.98	4.59	1.04	1.80	1.88	150.333	28.26
Jan 2011	4.85	3.98	1.22	1.54+0.51	2.50	166.063	41.52	4.59	1.06	1.80	1.90	166.063	31.55
Feb 2011	5.07	3.98	1.27	1.54+0.51	2.60	142.32	37.00	4.59	1.11	1.80	1.99	142.32	28.32
Mar 2011	4.79	3.98	1.25	1.54+0.51	2.56	164.695	42.16	4.59	1.08	1.80	1.95	164.695	32.12
2011-12	4.85	3.98	1.22	1.55+0.51	2.51	1980.54	497.12	4.59	1.06	1.55+0.26	1.92	1980.54	380.26
Sub-total for the year 2010-11 & 2011-12 as per actual billing							997.21						764.58
2012-13	4.85	3.98	1.22	1.71+0.51	2.71	1893	513.00	4.59	1.06	1.71+0.26	2.09	1893	395.04
2013-14	4.85	3.98	1.22	1.89+0.51	2.93	1948	570.76	4.59	1.06	1.89+0.26	2.28	1948	444.14
2014-15	4.85	3.98	1.22	2.00+0.51	3.06	2005	613.53	4.59	1.06	2.00+0.26	2.40	2005	481.20
2015-16	4.85	3.98	1.22	2.1+0.51	3.18	2094	665.89	4.59	1.06	2.1+0.26	2.50	2094	523.50
2016-17	4.85	3.98	1.22	2.11+0.51	3.20	2188	700.16	4.59	1.06	2.11+0.26	2.51	2188	549.19
2017-18	4.85	3.98	1.22	2.14+0.51	3.23	2287	738.70	4.59	1.06	2.14+0.26	2.54	2287	580.90
2018-19	4.85	3.98	1.22	2.16+0.51	3.26	2390	779.14	4.59	1.06	2.16+0.26	2.57	2390	614.23
2019-20	4.85	3.98	1.22	2.17+0.51	3.27	2499	817.17	4.59	1.06	2.17+0.26	2.58	2499	644.74
2020-21	4.85	3.98	1.22	2.2+0.51	3.31	2616	865.90	4.59	1.06	2.2+0.26	2.61	2616	682.78
2021-22	4.85	3.98	1.22	2.20+0.51	3.31	2740	906.94	4.59	1.06	2.20+0.26	2.61	2740	715.14
2022-23	4.85	3.98	1.22	2.20+0.51	3.31	2870	949.97	4.59	1.06	2.20+0.26	2.61	2870	749.07
2023-24	4.85	3.98	1.22	2.20+0.51	3.31	3006	994.99	4.59	1.06	2.20+0.26	2.61	3006	784.57
2024-25	4.85	3.98	1.22	2.20+0.51	3.31	3150	1042.65	4.59	1.06	2.20+0.26	2.61	3150	822.15
2025-26	4.85	3.98	1.22	2.21+0.51	3.32	3305	1097.26	4.59	1.06	2.21+0.26	2.62	3305	865.91
2026-27	4.85	3.98	1.22	2.22+0.51	3.33	3469	1155.18	4.59	1.06	2.22+0.26	2.63	3469	912.34
2027-28	4.85	3.98	1.22	2.20+0.51	3.33	3641	1212.45	4.59	1.06	2.22+0.26	2.63	3641	957.58
2028-29	4.85	3.98	1.22	2.22+0.51	3.33	3823	1273.06	4.59	1.06	2.22+0.26	2.63	3823	1005.45
2029-30	4.85	3.98	1.22	2.23+0.51	3.34	4015	1341.01	4.59	1.06	2.23+0.26	2.64	4015	1059.96
Sub-total for the remaining 18 years as per projection of Consultant							16237.76						12788.49
Grand Total							17234.97						13553.07

Summary of computation of revenue losses for 20 years at the present level of Input Energy

Computation by Audit taking Base year ATR of ₹ 3.98 per unit and with increase of ₹ 0.51 per unit in first ATR	For remaining 18 years	Total
₹ 997.21	₹ 16237.76	₹ 17234.97
Less: Computation in billing taking Base year ATR of ₹ 4.59 per unit and with increase of ₹ 0.26 per unit in first ATR	₹ 764.58	₹ 13553.07
Revenue loss	₹ 232.63	₹ 3449.27

* (Input Rate quoted by TPL: ₹ 1.54 + Increase in ATR: ₹ 0.26 = ₹ 1.80).

Annexure-18
Statement showing frequent tendering done by DVVNL in procurement of materials
(Referred to in paragraph 3.11.2)

Sl. No.	Item	Particulars of First Tender		Particulars of subsequent Tender		Rate increase in per cent	Rate increase (₹)	Excess Expenditure (₹)	
		Tender No. & Date	Quantity	Rate (₹)	Tender No. & Date				Quantity
1	2	3	4	5	6	7	8	9	
1	G.I.Wire 3.15mm/10SWG	DVVNL-MM/647-2011,09.3.11	125 MT	50770	DVVNL-MM/711-2011,02.7.11	270 MT	52627.70	1857.70	501579.00
2	G.I.Wire 4.00mm/8SWG	DVVNL-MM/652-2011,08.3.11	150 MT	50260	DVVNL-MM/710-2011,01.7.11	430 MT	52627.70	2367.70	1018111.00
3	G.I.Wire 5mm/6SWG	DVVNL-MM/651-2011,09.3.11	150 MT	50211	DVVNL-MM/709-2011,01.7.11	675 MT	52627.70	2416.70	1631272.50
4	11KV VTYPE Steel Cross Arm	DVVNL-MM/643-2011,08.3.11	100000 No.	408.19	DVVNL-MM/712-2011,01.7.11	93000 No.	421.91	13.72	1275960.00
				Sub Total					4426922.50
5	63 KVA T/F	DVVNL-MM/333-2008,16.8.08	700 No.	75110.00	DVVNL-MM/403-2008,30.9.08	1200 No.	82610.00	7500.00	9000000.00
6	10 MVA T/F	DVVNL-MM/319-2008,08.7.08	10 No.	4735751	DVVNL-MM/397-2008,09.9.08	50 No.	4898000	162249.00	8112450.00
				Sub Total					17112450.00
				Grand Total					21539372.50

Sources: Tender files of DVVNL

Annexure-19
Statement showing excess expenditure due to procurement at higher rates
(Referred to in paragraph 3.11.3)

Sl.No	Tender No and Date	Material	L-1 rate (₹)	Quantity	Other Discoms/ Pole Manufacturing Units rate (₹)	Reasons for low rate	Difference (₹)	Excess Expenditure (₹)
1	2	3	4	5	6	7	8 (4-6)	9 (5 X 8)
1	PVVNL-MT/685(vs)/11-12 Dated.02.7.2011	8.5 mtr PCC poles	1702.50 (August 2011)	200000	1634.40 (August 2011)	Rate of poles manufactured in own unit	68.10	13620000
2	PVVNL-MT/261(s)/08-09 Dated.02.02.2009	Meters	1089.26 (August 2008)	50000	997.28 (August 2008)	Rate received by MVVNL	91.98	4599000
3	DVVNL/MM/479-2009 Dated.23.5.2009	8.5 mtr PCC poles	1656.40 (June 2009)	74800	1554.95 (August 2010)	Rates received by MVVNL	101.45	7588460
Total								25807460

Sources: Tender files of DVVNL & PVVNL

Annexure-20
Statement showing loss due to repair of transformer at higher package rates during the year 2006-07 to 2010-11 by PVVNL, Meerut & DVVNL, Agra
(Referred to in paragraph 3.11.7)

PVVNL	Capacity of transformers in KVA										Total (Nos.)
	25	63	100	160	250	400	630	1000			
Ghaziabad	9062	6230	3795	269	522	643	135	17			20673
Moradabad	9287	5103	3040	303	994	966	249	11			19953
Saharanpur	11289	6871	4393	121	285	449	112	21			23541
Meerut	5850	4295	3155	128	411	515	83	14			14451
DVVNL											78618
Agra	12976	8449	4772	490	1469	1693	180	30			30059
Aligarh	1959	975	510	60	148	187	25	5			3869
Kanpur	6941	4312	1754	103	538	575	39	0			14262
Jhansi	6798	6145	2254	292	664	776	90	9			17028
Total Transformers repaired	64162	42380	23673	1766	5031	5804	913	107			143836
Capacity wise HV/LV coils used in repair of Transformer in KG (Average)	23.35	43.8	60.89	79.8	105.65	220.63	322.55	456.7			
Total HV/LV Coils used in repair of transformer (in KG)	1498182.7	1856244	1441449	140926.8	531525.15	1280536.52	294488.15	48866.9			
Total Wt of Aluminium HV/LV leg coils	5468327.62	(25 KVA to 250 KVA)									
Total Wt of Copper HV/LV leg coils	1623891.57	(400 KVA to 1000 KVA)									
Package rate of Aluminium/Market rate in ₹ per KG	229.33/111.20										
Package rate of Copper/Market rate in ₹ Per Kg	321.88/154.69										
Loss in repair of transformer by Aluminium HV/LV Leg coils	645973541.80	(229.33-111.2 X 5468327.62)									
Loss in repair of transformer by Copper HV/LV Leg coils	271498431.60	(321.88-154.69 X 1623891.57)									
Total Loss in ₹	917471973.40										

Source: Stage Inspection Report provided by DVVNL.

Annexure-21

**Statement showing royalty payable on quantity of surplus earth generated vis-à-vis actual quantity of pipes laid, bedding and manhole constructed, (as on 31 March 2012)
(Referred to in paragraph 3.12.1)**

Sl. No.	Name of the Division	Name of the scheme	Name of the sewerage work	As per Bond				As per actual executed quantity				Amount of royalty due on surplus earth but not paid (at the rate of ₹ 9/ cum on Col.17)	Value of earth not realised by way of sale of surplus earth					
				Pipes (in m)	Quantity of manholes	Bedding	Disposal of surplus earth	Rate for disposal of surplus earth (in ₹)	Amount payable for disposal of surplus earth (in ₹)	Surplus earth to be generated (as worked out by Audit)	Pipes laid (in m)			Quantity of manholes (in no.)	Bedding (in cum)	Disposal of surplus earth (in cum)	Amount paid on disposal of surplus earth	Surplus earth generated (as worked out by Audit)
1	2	3	4	5	6	7	8	9	10	11	12	13	14	15	16	17	18	19
Sewerage Works																		
A. Works where separate provision for disposal is made (three works)																		
(i) Works where short provision for disposal of surplus earth has been made (two works)																		
1	PM-IV, GPCU, Lko	JNNURM	Distric III, Part-II	355500	16496	59733	42256	208.69	8818405	104730	110486	4326	14263	21825	4554659	26837	241533	1730987
2	GPCU Kampur	JNNURM	Imer old Area (Part-I)	70437	984	13713	12830	100 to 200	2195100	130070	54951	942	11869	31432	4552969	101639	914751	6555716
	Sub Total (two works)			425937	17480	73446	55086		11013505	234800	165437	5268	26132	53257	9107628	128476	1156284	8286702
(ii) Works where excess provision for disposal of surplus earth has been made (one work)																		
3	GPCU Varanasi	JNNURM	Trans Varana	142601	4243	82866	287598	184.66	53108019	188566	88351	2316	not stated separately	not stated separately	included in compo-site rate	112507	1012563	7256702
	Total of above 3 works			568538	21723	156312	342684	185	64121524	423366	253788	7584	26132	53257	9107628	240983	2168847	15543404
B. Works where separate provision for disposal has not been made in contracts (five works)																		
4	GPCU Varanasi	GAP-2	Relieving Trunk sewer	5280	not stated separately	not stated separately	not stated separately			14576	5051	not stated separately	not stated separately	not stated separately		13071	117639	843079.5
5	GPCU, Allahabad	JNNURM	Distric D	140094	not stated separately	not stated separately	not stated separately			28144	87370	not stated separately	not stated separately	not stated separately		12157	109413	784126.5
6		NGRBA	Distric E	109378	not stated separately	not stated separately	not stated separately			11685	12991	not stated separately	not stated separately	not stated separately		1112	10008	71724
7		NGRBA	Distric A	9240	not stated separately	not stated separately	not stated separately			5296	2832	not stated separately	not stated separately	not stated separately		1149	10341	74110.5
8		NGRBA	Distric B & E	13123	not stated separately	not stated separately	not stated separately			16568	7303	not stated separately	not stated separately	not stated separately		1816	16344	117132
	Total of 5 works			271835						61693	110496					16234	146106	1047093
	Grand Total (8 Sewerage Works)			845653	21723	156312	342684	185	64121524	499635	369335	7584	26132	53257	9107628	270288	2432592	17433576

Annexure-22
Statement showing paragraphs/Performance Audit for which replies were not received
(Referred to in paragraph 3.15.1)

Sl. No	Name of Department	2006-07		2007-08		2008-09		2009-10		2010-11	
		No. of para in Audit Report	No. of para for which reply not received	No. of para in Audit Report	No. of para for which reply not received	No. of para in Audit Report	No. of para for which reply not received	No. of para in Audit Report	No. of para for which reply not received	No. of para in Audit Report	No. of para for which reply not received
1.	Energy (Power)	14	12	17	10	13	12	7	5	4	4
2.	Transport	5	4	2	--	1	1	--	--	2	2
3.	Co-operative	--	--	1	--	--	--	--	--	--	--
4.	Samaj Kalyan	--	--	--	--	2	1	--	--	--	--
5.	Agriculture	3	1	1	1	--	--	1	1	--	--
6.	Vastra Udyog	--	--	--	--	--	--	1	1	--	--
7.	Industrial Development	2	2	1	--	3	3	--	--	2	2
8.	Public Works	2	2	3	3	1	1	2	2	--	--
9.	Small Industries	2	2	--	--	--	--	--	--	--	--
10.	Sugar Industry and Cane Development	--	--	1	--	--	--	--	--	1	--
11.	Urban Development	1	--	--	--	1	1	2	1	--	--
12.	Housing and Urban Planning	3	3	2	2	1	--	--	--	2	2 [∞]
13.	Irrigation	--	--	--	--	--	--	1	-	2	2
14.	Matsya Avam Pashudhan	--	--	--	--	1	1	--	--	--	--
15.	Electronics & IT	--	--	--	--	--	--	--	--	--	--
16.	Public Enterprises [*]	1	--	--	--	2 [*]	--	--	--	--	--
17.	Food and civil supplies	1	--	--	--	--	--	--	--	--	--
18.	Minerals and Mining	3	--	5	--	2	2	2 [*]	2	3	3
19.	Forest	--	--	--	--	--	--	--	--	1	1
Total		37	26	33	16	27	22	16	12	16	15

[∞] This includes a para on non-recovery of trade tax/VAT on two entities under two different departments (Uttar Pradesh Avam Evam Vikas Parishad: Housing and Urban Planning Department and Uttar Pradesh Industrial Development Corporation Limited: Minerals and Mining Department). Hence, it is counted as one para.

^{*} In the group of Public Enterprises, there were three and thirteen departments in respect of which General paras were issued during 2006-07 and 2008-09 respectively.

^{*} This relates to 13 departments including department of Niryat Protsahan, Tax and Institutional Finance, Forest, Panchayati Raj, Pichra Varg Kalyan and Tourism not appearing in column of name of department.

Annexure-23

Statement showing persistent irregularities pertaining to Government Companies appeared in the Reports of the Comptroller & Auditor General of India (Commercial) - Government of Uttar Pradesh (Referred to in paragraph 3.15.3)

Year of Audit Report	Paragraph No.	Money Value (₹ in crore)	Gist of Persistent Irregularities	Actionable points/action to be taken	Details of actions taken
1. Power Sector Companies					
1997-98	3C.10.2(a)	2.37	Non-discontinuance of cheque facility after dishonour of cheques and non-disconnection of supply of electricity leading to accumulation of arrears.	Responsibility was required to be fixed on officials for not taking appropriate action.	Total dues against the consumer could not be recovered due to stay order of the court. The UPSEB/Company did not fix responsibility on any official for accumulation of dues.
1998-99	3A.6.2.3	8.99	-----do-----	-----do-----	Management's reply and further action were awaited.
	3A.6.2.6	16.66	-----do-----	-----do-----	-----do-----
1999-2000	4A.14	11.45	-----do-----	-----do-----	-----do-----
	4A.17	0.99	-----do-----	-----do-----	Management intimated the action taken for recovery of dues. Further action for recovery of balance amount of ₹ 0.99 crore was awaited. UPSEB did not fix responsibility on any official.
2001-02	3A.10	0.55	-----do-----	-----do-----	Management's reply and further action were awaited.
	3A.12	0.18	-----do-----	-----do-----	-----do-----
2002-03	2.2.25	0.79	-----do-----	-----do-----	-----do-----
2003-04	2.3.16	16.10	-----do-----	-----do-----	Management stated that action would be taken.
	3.11	0.51	-----do-----	-----do-----	Management stated that RC is pending in court.
2005-06	4.17	0.46	-----do-----	-----do-----	Management reply and further action is awaited.
1997-98	3C.12.1	61.39	Excessive damage of transformers (damage of transformers in excess of norm of 2 per cent) resulting in extra financial burden on repair	Examination for ascertaining reasons of excessive damage and adherence of schedule of preventive maintenance were required.	As remedial measures, Management issued instructions from time to time to zonal offices to reduce excessive damage of transformers and intimated that UPSEB was increasing the capacity of existing transformers and establishing new sub-station. The details of impact of remedial measures leading to reduction in damage of transformers were awaited.
1999-2000	3B.6.2	325.28	-----do-----	-----do-----	-----do-----
2002-03	2.2.21	0.43	-----do-----	-----do-----	Management's reply and further action were awaited.
1998-99	3A.5.17	3.17	Short billing and irregular waiver of minimum consumption guarantee/late payment surcharge.	Responsibility was required to be fixed in the cases of gross negligence on the part of official and where company sustained loss.	-----do-----
1999-2000	4A.13(a)	0.23	-----do-----	-----do-----	Government had directed to adjust the amount of outstanding dues from the loan of State Government to UPPCL. Intimation regarding adjustment of dues of UPPCL with the Government loan was awaited.
	4A.26	0.10	-----do-----	-----do-----	Management's reply and further action were awaited.
2001-02	3A.19	0.49	-----do-----	-----do-----	No responsibility was fixed by the Management so far.
2002-03	2.2.21	0.52	-----do-----	-----do-----	Management's reply and further action were awaited.

Year of Audit Report	Paragraph No.	Money Value (₹ in crore)	Gist of Persistent Irregularities	Actionable points/action to be taken	Details of actions taken
2004-05	3.3	171.15	-----do-----	-----do----- -	No responsibility was fixed by the Management so far.
2005-06	2.2.15	1.32	-----do-----	-----do----- -	Management stated that due to large number of consumers, billing in stipulated time is not possible.
2003-04	3.9	8.22	Irregular waiver of penalty for peak hour violation	Responsibility was required to be fixed in the cases of gross negligence on the part of official and where company sustained loss.	Management's reply and further action were awaited.
	3.13	0.44	-----do-----	-----do----- -	-----do-----
	3.18	0.18	-----do-----	-----do----- -	No responsibility was fixed by the Management so far.
2004-05	3.10	0.36	-----do-----	-----do----- -	Management's reply and further action were awaited.
2003-04	3.14	0.79	Non-levy of penalty for peak hour violation/ non-application of rate for unrestricted supply	Responsibility was required to be fixed on officials for not taking appropriate action.	-----do-----
	3.15	0.47	-----do-----	-----do----- -	-----do-----
	3.16	1.24	-----do-----	-----do----- -	-----do-----
2004-05	3.13	0.19	-----do-----	-----do----- -	-----do-----
1998-99	3A.6.2.1	68.95	Payment of monthly bills in instalments and waiver of late payment surcharge	Responsibility was required to be fixed on official violating the procedures of revenue collection.	Management replied that the instalment payment were allowed to consumers due to bad financial position of the consumers as a result of recession in the industry, after obtaining permission of competent authority/committee. UPPCL was taking action for recovery of balance amount of dues from consumer. Outcome of the action was awaited
2000-01	4A.22	2.80	-----do-----	-----do----- -	Management replied that the consumer was an important company of erstwhile KESA, decision taken by KESA had been adopted by the Corporation and recovery was made as per the decision of KESA.
2003-04	3.12	0.27	Short billing due to incorrect application of tariff.	Responsibility was required to be fixed on officials for not ensuring billing on the applicable tariff.	Management's reply and further action were awaited.
2004-05	3.7	1.12	-----do-----	-----do----- -	Management's reply and further action were awaited.
2005-06	4.25	0.10	-----do-----	-----do----- -	Management stated that bills of differential amount of ₹ 1.12 crore have been issued to the consumer. However, the recovery was awaited.
2006-07	4.15	1.53	-----do-----	-----do----- -	Bills were raised by the division but recovery was awaited.
2007-08	3.12	0.11	-----do-----	-----do----- -	The Management stated that the bill for difference amount has been raised. The recovery was however awaited.

Year of Audit Report	Paragraph No.	Money Value (₹ in crore)	Gist of Persistent Irregularities	Actionable points/action to be taken	Details of actions taken
	3.17	0.81	-----do-----	-----do----- -	The Management stated that the bill for difference amount has been raised. The recovery was however awaited.
	3.18	0.25	-----do-----	-----do----- -	The Management stated that the bill for difference amount has been raised. The recovery was however awaited.
2008-09	4.17	0.12	-----do-----	-----do----- -	Management's reply was awaited.
	4.9	7.43	-----do-----	The Management was required to strengthen the Internal control system to avoid such lapses in future.	Management's reply was awaited.
2008-09	2.1.21	134.39	Excess consumption of coal.	The Management was required to take up measures to check loss of coal in transit, delay in unloading rakes, reduce consumption of coal and timely completion of R&M activities..	Management stated that units were very old and quality of coal was poor leading to consumption of excess coal and efforts were being made to reduce the consumption.
2009-10	2.2.34	1082.51	-----do-----	-----do----- -	Management stated that excess consumption of coal was due to poor quality of coal and non-completion of R&M activities.
	Total	1935.41			
2. U.P. State Sugar Corporation Ltd.					
1999-2000	4A.8	0.51	Improper storage leading to damage of sugar and consequential loss	Remedial action was required to be taken to avoid recurrence of loss due to improper storage.	Management stated that sugar became wet due to unavoidable circumstances and no official was responsible for it.
2000-01	4A.5	0.83	-----do-----	-----do----- -	Government/Management explained that Sugar Directorate did not issue release order according to stock and sugar became wet due to excessive carryover of stock for longer period.
2002-03	3.1.6	1.19	-----do-----	-----do----- -	Management's reply was awaited
	Total	2.53			
Uttar Pradesh State Agro Industrial Corporation Limited					
2001-02	2A.3.2.1	2.06	Sub-standard procurement of GI pipes for hand pumps	Management was required to adhere the prescribed procedure and standard of quality in procurement of materials.	Management stated that clarification have been sought from suppliers and Bureau of Indian Standard after which necessary action would be taken.
2009-10	2.1.10	3.26	-----do-----	-----do----- -	Management stated that orders to field units have been issued not to accept sub-standard supplies and from 2007-08 supply orders of more than 10 MT were being placed.
2001-02	2A.3.3.1	0.69	Excess cost on consumption of casing pipes.	The Management was required to prepare estimates of installation of hand pumps as per the norm.	Management stated that the matter was being investigated.

Year of Audit Report	Paragraph No.	Money Value (₹ in crore)	Gist of Persistent Irregularities	Actionable points/action to be taken	Details of actions taken
2009-10	2.1.12	0.40	-----do-----	-----do-----	Management stated that in future estimates for installation of hand pumps would be modified on written information of the Divisional Engineers.
2001-02	2A.3.3.2	3.93	Charging of excessive margin on installation of hand pumps.	The Management was required to strengthen the internal control system to avoid such lapses in future.	Management stated that cost estimates were approved by the Government.
2009-10	2.1.13	5.73	-----do-----	The Management was required to streamline the internal control mechanism to avoid such lapses in future	Management stated that the Company was preparing estimates as were being prepared by Uttar Pradesh Jal Nigam.
	Total	16.07			

Annexure-24

Statement showing persistent irregularities pertaining to Statutory corporations appeared in the Reports of the Comptroller & Auditor General of India (Commercial), Government of Uttar Pradesh (Referred to in paragraph 3.15.3)

Year of Audit Report	Paragraph No.	Money Value (₹ in crore)	Gist of Persistent Irregularities	Actionable points/action to be taken	Details of actions taken
1. Uttar Pradesh Financial Corporation					
1997-98	3A.7.2.1	2.39	Faulty appraisal of proposal for sanction of loan where units were not viable from beginning leading to loss or non-recovery of the amount of loan.	Responsibility was required to be fixed on officials who appraised the proposal for sanction of loan besides strengthening of appraisal system and procedure.	Corporation could recover ₹ 36.32 lakh only from the Directors of the assisted unit and issued Personal Recovery Certificate (PRC) for recovery of balance amount. Responsibility was not fixed on any official.
	3A.7.2.3	1.66	-----do-----	-----do----- -	Corporation could recover ₹ 28.53 lakh only from the Promoters. For recovery of balance amount PRC was issued. Responsibility was not fixed on any official.
1999-2000	4B.2	1.30	-----do-----	-----do----- -	Corporation recovered ₹11.54 lakh by sale of assets. Corporation issued Recovery Certificate (RC)/ Personal recovery certificate (PRC) for recovery of dues against Directors and guarantors. Responsibility was not fixed on any official.
	4B.7	1.39	-----do-----	-----do----- -	Corporation could recover ₹ 25.15 lakh only through sale of assets of assisted unit. PRC have been issued. Responsibility was not fixed on any official
2002-03	3.2.2	11.68	-----do-----	-----do----- -	No recovery could be made. RC has been issued.
	3.2.3	7.09	-----do-----	-----do----- -	Corporation recovered ₹ 44.13 lakh. PRC has been issued.
	3.2.4	4.85	-----do-----	-----do----- -	Corporation approved OTS of ₹ 1.95 crore against which ₹ 1.45 crore had been deposited so far.
2004-05	3.16	5.65	-----do-----	-----do----- -	Management's reply and further action were awaited.
1997-98	3A.8.2.1	2.82	Non-observance of pre-disbursement conditions leading to loss due to recovery of loans becoming impossible.	Responsibility was required to be fixed on officials who failed to ensure pre-disbursement conditions besides the strengthening of system and procedure for disbursement of loan.	Corporation could recover ₹ 75 lakh only under One Time Settlement (OTS) decision.
	3A.8.2.2	1.75	-----do-----	-----do----- -	Corporation could recover ₹ 74.60 lakh (including ₹ 32.75 lakh against OTS of ₹ 51.10 lakh). Responsibility was not fixed on any official so far.
	3A.8.2.3	1.36	-----do-----	-----do----- -	Corporation recovered ₹ 12 lakh through sale of assets. Corporation issued PRC and recovered ₹ 70.50 lakh from one promoter against PRC. Responsibility was not fixed on any official.

Year of Audit Report	Paragraph No.	Money Value (₹ in crore)	Gist of Persistent Irregularities	Actionable points/action to be taken	Details of actions taken
	3A.8.2.4	2.14	-----do-----	-----do-----	Corporation could not recover the dues. Responsibility was not fixed on any official so far.
2003-04	3.21	2.21	-----do-----	-----do-----	Corporation could not recover the dues and further action was awaited.
2004-05	3.15	13.59	-----do-----	-----do-----	Management's reply and further action were awaited.
1999-2000	4B.6	0.56	Loss due to disbursement of loan on irregular legal documentation/forged documents.	Strengthening of procedure for fool proof verification/independent checking of documents were required.	Corporation approved OTS of ₹ 62.74 lakh against which borrower deposited ₹ 31.30 lakh so far.
2000-01	4B.3	4.44	-----do-----	-----do-----	Corporation could recover only nominal amount from the promoters. PRC has been issued.
	4B.5	0.97	-----do-----	-----do-----	Corporation could recover ₹ 28.80 lakh only. PRC was issued against promoters and guarantors.
	4B.6	0.62	-----do-----	-----do-----	Corporation could not recover any amount from the promoter. Further action was awaited.
2002-03	3.2.6	4.50	-----do-----	-----do-----	Corporation recovered ₹ 1.46 crore. RC has been issued. Management did not indicate any remedial action to avoid recurrence of such incidence.
2003-04	3.22	2.06	Loss due to delay in taking over possession of the unit.	Responsibility was required to be fixed on officials for delay in taking over the possession of the unit.	Management's reply and further action were awaited.
2004-05	3.18	10.79	-----do-----	-----do-----	-----do-----
2005-06	4.30	11.64	-----do-----	-----do-----	Possession was not taken to avoid huge security expenses.
	Total	95.46			
2. Uttar Pradesh State Road Transport Corporation					
1997-98	4B.2	0.32	Avoidable payment of damages on belated deposit of EPF.	Timely payment of EPF was required to ensure avoiding incidence of damages on delayed deposits	Management's reply was awaited
1998-99	4B.1	0.19	-----do-----	-----do-----	Management intimated that the amount of damages was adjusted in the wake of stay order of the court.
2000-01	4B.2	0.27	-----do-----	-----do-----	Management informed that a work plan had been prepared for deposit of tax. Further action was awaited
	Total	0.78			

Annexure-25
Statement showing the department-wise outstanding Inspection Reports
(Referred to in paragraph 3.15.4)

Sl. No.	Name of Department	No. of PSUs	No. of outstanding IRs	No. of outstanding Paragraphs	Year from which paragraphs outstanding
1.	Agriculture	3	13	56	2005-06
2.	Matsya and Pashudhan	1	6	29	2004-05
3.	Sugar Industry and Cane Development	5	34	95	--do--
4.	Irrigation	1	7	42	--do--
5.	Small Industries	1	7	53	--do--
6.	Industrial Development	3	56	351	--do--
7.	Export Promotion	2	12	75	--do--
8.	Hathkargha & Vastra Udyog	3	13	35	--do--
9.	Electronics & IT	4	17	45	--do--
10.	Public Works	2	324	1102	--do--
11.	Samaj Kalyan	3	11	37	2006-07
12.	Mahila Kalyan	1	1	5	2011-12
13.	Home	1	4	7	2004-05
14.	Food and Civil Supplies	2	12	54	2005-06
15.	Tourism	1	5	9	2007-08
16.	Waqf Avam Alpsankhyak	2	8	30	2004-05
17.	Transport	1	81	461	--do--
18.	Co-operative	1	7	45	--do--
19.	Forest	1	21	73	--do--
20.	Energy	13	1599	6347	--do--
21.	Health	1	2	4	2005-06
22.	Housing and Urban Planning	2	851	2887	2004-05
	Total	54	3091	11842	

Source: Progress register of AIRs.

Annexure-26

Statement showing the department-wise draft paragraphs/Performance Audit replies to which were awaited (Referred to in paragraph 3.15.4)

Sl. No.	Name of Department	No of draft paragraphs	No of Performance Audit	Period of issue
1.	Energy	8	1	April 2012 to August 2012
2.	Cooperative	1	--	June 2012
3.	Urban Development	3	--	June 2012 and July 2012
4.	Irrigation	3*	--	--do--
6.	Industrial Development	--	1	September 2012
Total		14	2	

* This includes a para on Excess expenditure on procurement of cement under two departments (U.P. Projects Corporation Limited: Irrigation Department and Uttar Pradesh Jal Nigam: Urban Development Department). This para is included at Sl. No. 3 hence, counted as two paragraphs.