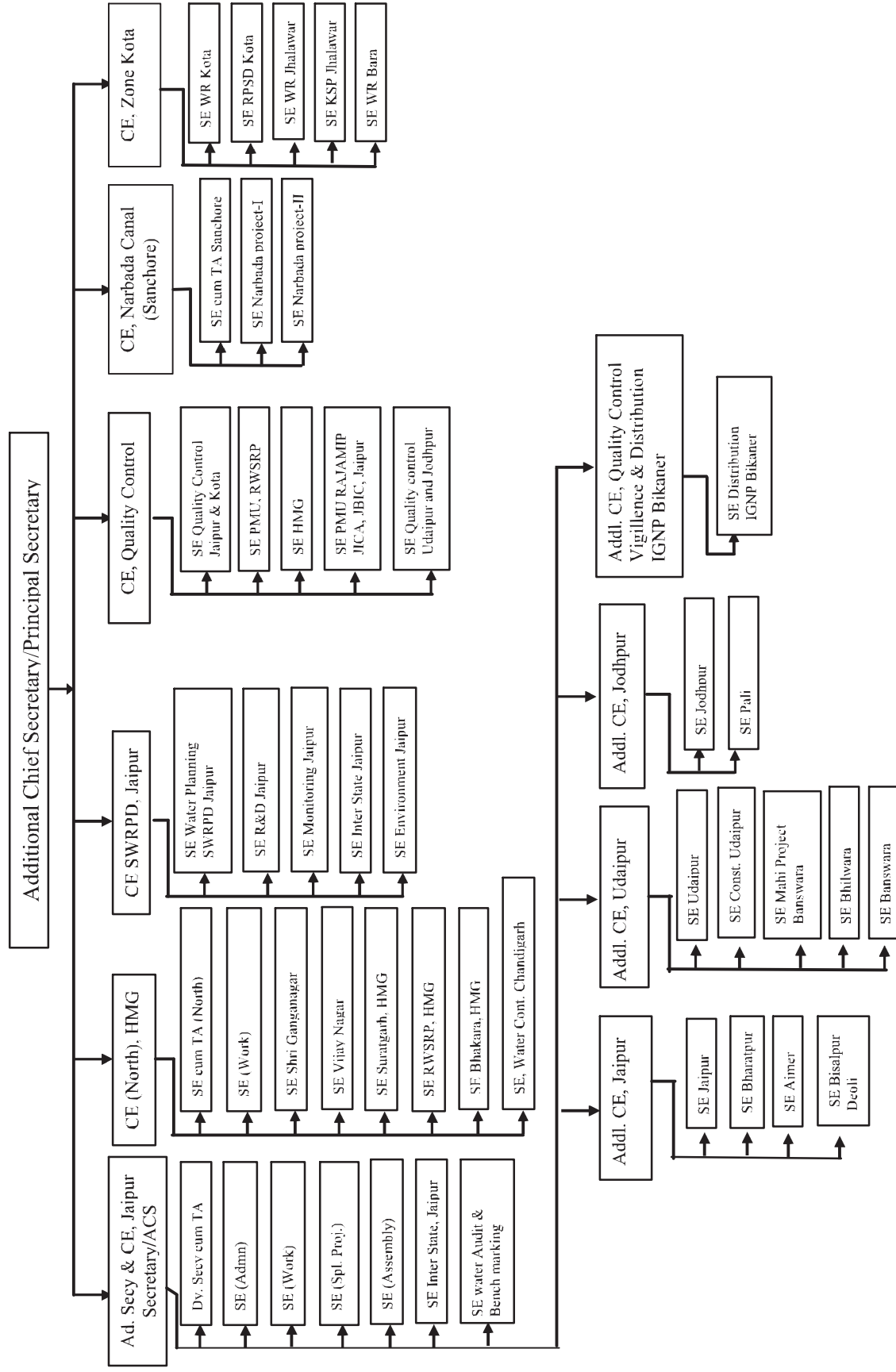


Appendices

Appendix 2.1 (Refer paragraph 2.1.2: page 8) (Organisational set-up as on 1.1.2012)



Appendix 2.2

(Refer paragraph 2.1.6.1; page 10)

Details of MIPs/Feeder which remained incomplete due to non acquisition/clearance of land from forest

(₹ in crore)											
S. No.	Name of Division	Name of MIP	A&F original issued	Revised A&F	Date/Year of awarding work	Stipulated date/year of completion	Actual date of completion	Expenditure incurred	Cost overrun due to delay/non acquisition/clearance of land	Status of MIP's as on 31 March 2012	
1.	EE B&RC Division Mahi Project, Bansvara	Bhukha Bhai Sangwara Canal 8to 20.11 km	27 December 2004 ₹ 26.16	-	2005-06	2006-2007	Incomplete	₹ 27.37	₹ 1.21 (actual cost overrun will be worked out after completion of work)	Work in progress	
2.	EE WRD Kota	Takli Irrigation cum water supply project	July 2006 ₹ 51.81	July 2011 ₹ 131.44	29 June 2007 ₹ 25.25	8 July 2010	Incomplete	₹ 8.50 (March 2012)	₹ 79.63	Work incomplete due to protest made by cultivators as land award was issued to them in piecemeal	
3.	EE WRD Chittorgarh	Sudari Feeder	13 December 2007 ₹ 0.55	-	17 May 2008 ₹ 0.60	27 September 2008	Incomplete	₹ 0.38 (August 2010)	-	Due to land dispute work remained incomplete	
Total									80.84		

Appendix 2.3

(Refer paragraph 2.1.6.2; page 10)

Year-wise details of rainfall, expected water receipt and actual water receipt in the MIPs

S. No.	Name of the project	Nearest rain gauge station	Storage capacity (in mcf)	Cultivable Command Area	Actual date of completion	Total expenditure incurred (₹ in lakh)	Average water runoff per square mile (In mcf)	Catchment area (In sq miles)	Average rainfall as per DPR (in mm)	Details of rainfall measured, expected water receipt and actual water receipt in the MIP				Reasons of non/short receipt/retention of water in dam	
										Year	Average rainfall during the year (in mm)	Expected water receipt in the MIP (mcf)	Actual water receipt in the MIP (mcf)		
1	2	3	4	5	6	7	8	9	10	11	12	13	14	15	
1.	Karoj MIP, Sikar	Udaipurwati	24.36	155.99 hectare	30.06.2004	85.89	5.35	4.60	457.20	2008	484	21.165	-	Due to low intensity of rainfall in catchment area	
										2009	187	1.173	-		
											2010	750	24.36 (max)	-	
											2011	596	24.36 (max)	-	
											2012	511	24.36 (max)	-	
2.	Fatehpura MIP, Sikar	Kotputli	51.96	265.99 hectare	31.03.2006	111.74	4.601	10.30	556.81	2008	897	51.96 (max)	-	Due to low intensity of rainfall in catchment area	
										2009	318	17.365	-		
											2010	816	51.96 (max)	-	
											2011	659	51.96 (max)	-	
											2012	638	51.96 (max)	-	
3.	Sawaipura MIP, Sikar	Danta Ramgadh	13.23	136.90 hectare	30.06.2004	45.64	4.01	3.30	450	2008	380	9.852	-	Due to low intensity of rainfall in catchment area	
										2009	298	5.196	-		
											2010	489	13.23 (max)	-	
											2011	467	13.23 (max)	-	
											2012	638	13.23 (max)	-	

Audit Report (Economic Sector) for the year ended 31 March 2012

1.	2.	3.	4.	5.	6.	7.	8.	9.	10.	11.	12.	13.	14.	15.		
4.	Bhairon Sagar, Media MIP, Bhiwara	Jahazpur	22.72	93 hectare	16.8.2007 (dam) & 31.5.2008 (canal)	67.90	14.364	2.45	711	2008	473	15.14	-	The site selection was wrong and low intensity of rainfall in catchment area.		
5.	Parwati Sagar MIP, Bhiwara	Jahazpur	18.54	72.87 hectare	29.03.2009 (Dam) & 31.12.2007 (Canal)	100.51	14.38	1.30	699	2009	324	18.54 (max)	02	Low intensity of rainfall in catchment area		
6.	Kailash Nagar MIP, Sumerpur (Pali)	Ora dam	67	374 hectare	01.08.2003	177.97	8.842	6.37	558.80	2008	335	13.84	-	Due to low intensity of rainfall in catchment area of dam		
7.	Karwara MIP, Jalore	Bhimmal	8.35	58 hectare	02.06.2004	22.14	2.457	2	381	2008	383	4.914	1.63	No reasons were intimated by the EE		
8.	Anka MIP, Alwar	Thangazi Tehsil	50.46	326 hectare	06.09.2004 (Dam) & 13.07.2006 (Canal)	136.17	10.51	4.8	635	2008	1060	50.46 (max)	7.00	Due to low intensity of rainfall in catchment area of dam		

1.	2.	3.	4.	5.	6.	7.	8.	9.	10.	11.	12.	13.	14.	15.
										2010	824	50.46 (max)	6.72	
										2011	770	50.46 (max)	4.10	
										2012	731	50.46 (max)	Nil	
9.	Nembaheri MIP, Alwar	Tapukara (Tijara)	43.88	458.10 hectare	21.1.2003 (Dum) 29.4.2006 (Canal)	136.93	8.154	5.5	609.60	2009	319	10.33	-	Due to short rainfall and absorption of water in land
										2010	495	29.17	-	
										2011	415	18.56	-	
										2012	490	25.30	5.40	
10.	Kot MIP, Pali	Bali	101.11	527.29 hectare	13.2.2009	220.48	4.916	21	584.20	2009	265	10.47	16.10	Irregular rainfall in catchment area of dam
										2010	796	101.11 (max)	26.11	
										2011	843	101.11 (max)	48.80	
										2012	653	101.11 (max)	11.05	
11.	Barfoot MIP, Sirohi	Sirohi	53.91	637.45 hectare	10.07.2008	408.41	8.56	13.38	584.20	2009	278	15.55	-	Due to not sufficient rainfall and interception of catchment area by construction of antecuts
										2010	787.70	53.91 (max)	11.41	
										2011	749	53.91 (max)	28.94	
										2012	741	53.91 (max)	8.36	
12.	Sali ki Dhani, Pali	Pali	54.68	112.40 hectare	31.7.2002	49.84	3.27	48.10	457.20	2008	200	18.76	-	Due to scattered rain in catchment area of dam.
										2009	166	7.50	-	
										2010	404	54.68 (max)	-	
										2011	508	54.68 (max)	-	
										2012	653	54.68 (max)	12.358	

Audit Report (Economic Sector) for the year ended 31 March 2012

1.	2.	3.	4.	5.	6.	7.	8.	9.	10.	11.	12.	13.	14.	15.
13.	Santru MIP, Jalore	Ranwara	18.50	71.34 hectare	2.6.2004	19.78	4.601	4.50	482.60	2008	467.6	18.06	1.407	Reasons were not investigated by the department
										2009	229	2.47	-	
										2010	1225	18.50 (max)	-	
										2011	820	18.50 (max)	-	
										2012	503	18.50 (max)	-	
14.	Talawara MIP, Jhalawar	Manohartha ana	26.24	140.11 hectare	15.5.2003 (Dam) & 2.11.2005 (Canal)	65.49	26.24	1.200	838.20	2008	691.00	17.23	3.50	Seepage of water from dam's wall and water slip away under-ground way both side at outlet sluice gate.
										2009	629.00	14.35	4.20	
										2010	514.00	8.36	3.82	
										2011	1461.00	24.73	3.00	
										2012	987	26.24 (max)	3.284	
15.	Taika Khera Chawli canal div-Jhalawar	Pachpathar	56.61	279.25 hectare	4.12.2004 & 1.10.2003	157.78	21.18	2.12	810	2008	633.20	25.36	4.41	Due to low intensity of rainfall in the catchment area.
										2009	554	18.74	-	
										2010	468	11.34	-	
										2011	101.5	56.20	21.18	
										2012	842.02	48.109	14.126	
16.	Pharaswali Dhani MIP, Sikar	Udaipurw at 28 km from site	37.84	345.24 hectare	25.3.2011	281.61	4.68	9.59	450	2010	750	37.84 (max)	8.76	Due to low intensity of rainfall in catchment area
										2011	596	37.84 (max)	Dead Storage level	
										2012	511	37.84 (max)	-	
		Total		4053.93 hectare		2088.28 i.e. 20.88 crore								

1. 25.4 mm=1inch 2.Average water run off per square mile in mcf taken as per strange's table, as per classification of catchment area.

Appendix 2.4

(Refer paragraph 2.1.7.5; page 18)

Statement showing details of compensation not recovered/levied from contractor due to non-completion of work under clause 2 and 3 of agreement

S. No.	Name of Division	Name of work	Name of Contractor	A&F sanction no. and date	Work order Amount	Stipulated date of		Amount of work completed	Compensation levied/to be levied		Amount Recovered	Amount to be recovered
						Commencement	Completion		Under clause 2	Under clause 3		
1.	EE WR Dn Udaipur	Construction of Maadri Dam with link tunnel between main Dam and main tunnel under Dewas stage-II project Teh. Girwa (Udaipur)	M/s Jaimata work Engineer and construction	1544-48/19.11.2005 ₹ 139.26 crore Revised-787/30.10.2007 ₹ 379.10 crore	10.61 crore	2.9.2006	01.03.2008	2.58	0.71	5.98	0.09	6.60
2.	EE WR Dn Chittorgarh	Restoration and rehabilitation of head work of canal system of potoliya, ustrol and Rajpuriya MIP	M/s Vijay construction company	553/20.7.2005 ₹ 612.29 crore	0.63 crore	06.1.2011	05.01.2013	0.08	0.06	0.37	0.02	0.41
3.	EE WR Dn Udaipur	Construction of Akodara Dam under Dewas Stage-II	M/s Shri Niwasa Construction Limited (SCL Infrotech Limited)	100/29.08.2005 ₹ 139.26 crore	33.62 crore	19.3.2007	18.3.2009	14.23	3.36	-	-	3.36
4.	EE WR Dn Dausa	Construction of Myla kua detention Dam	M/s Gurdeep Singh Chandi and company	3161-67/15.7.2011 ₹ 4.61 crore	3.87 crore	18.12.2010	17.6.2011	2.78	0.11	-	-	0.11

Audit Report (Economic Sector) for the year ended 31 March 2012

S. No.	Name of Division	Name of work	Name of Contractor	A&F sanction no. and date	Work order Amount	Stipulated date of		Amount of work completed	Compensation levied/to be levied		Amount Recovered	Amount to be recovered
						Commencement	Completion		Under clause 2	Under clause 3		
5.	EE NCP Dn-I, Sanchore	Supply, laying, jointing, testing and commissioning of destination between HDPE pipe with electrically operated motors.	M/s Jain Irrigation System Limited	1469/17.8.2010 ₹ 2481.49 crore	11.13 crore	23.12.2010	22.12.2011	3.49	1.11	-	-	1.11
6.	EE WRD Dn Dungarpur	Raising of height of Lodisar Tank	M/s Shri Niwasa Construction Limited (SCL Infrotech Limited)	₹ 8.70 crore Revised- ₹ 13.68 crore	2.95 crore	9.9.2008	8.7.2009	1.05	0.19	0.37	0.11	0.45
Total											12.04	

Appendix 2.5

(Refer paragraph 2.1.10.1; page 23)

Summarised position of actual expenditure vis-à-vis original/supplementary provision during 2009-12

(₹ in crore)

Head Account	Year	Original	*Final Estimate	Actual Expenditure	Saving (-)/ Excess (+)	Percentage of Savings/ Excess
Revenue 2700	2009-10	872.49	870.93	862.96	(-) 9.53	1.03
	2010-11	907.78	956.83	948.50	(+) 40.72	4.48
	2011-12	989.34	1014.68	1009.02	(+) 19.68	1.99
2701	2009-10	283.84	268.67	266.34	(-) 17.50	6.17
	2010-11	291.77	280.73	272.44	(-) 19.33	6.63
	2011-12	315.59	295.42	291.02	(-) 24.57	7.73
2702	2009-10	69.34	63.05	67.24	(-) 2.10	3.03
	2010-11	77.98	71.64	68.84	(-) 9.14	11.72
	2011-12	136.94	82.70	86.99	(-) 49.45	36.11
Total		3945.07	3904.65	3873.35		
Capital 4700	2009-10	710.66	619.72	619.12	(-) 91.54	12.88
	2010-11	624.08	491.45	489.04	(-) 135.04	21.64
	2011-12	585.24	459.52	462.71	(-) 122.53	20.94
4701	2009-10	55.03	61.79	58.66	(+) 3.63	6.60
	2010-11	51.94	133.59	121.72	(+) 69.78	13.43
	2011-12	59.40	55.57	36.98	(-) 22.72	38.06
4702	2009-10	185.99	98.04	88.48	(-) 97.51	52.43
	2010-11	205.28	113.72	89.09	(-) 116.19	56.60
	2011-12	104.85	84.51	79.05	(-) 25.80	24.61
4711	2009-10	2.15	1.82	1.77	(-) 0.38	17.67
	2010-11	2.15	1.93	1.93	(-) 0.22	10.23
	2011-12	1.73	1.82	1.52	(-) 0.21	12.14
Total		2588.80	2123.48	2050.07		

*Including supplementary grant/re-appropriation and surrender.

Source: Appropriation Accounts

Appendix 2.6

(Refer paragraph 2.1.10.3; page 24)

Statement showing the non-recovery of excess expenditure on deposit works.

				(₹ in lakh)
S.No.	Name of Division	Month & Year of transaction	Particulars	Amount
1	EE, WR, Dn. Kota	10/2002	Swarn Jayanti Gram Swarojgar Yojana (SGSY)	61.56
		9/2004	MPLAD	0.26
2	EE, WR, Dn.II, Chhabra	-	Sahariya development scheme	4.45
		-	MPLAD, fund Anta	1.47
		-	MPLAD, Chhipa barrod	0.55
		-	SGSY	18.99
		-	MADA Yojana, Anicut, Amli and Musenmatad	3.00
		-	Parwan Canal Lift	0.1
3	EE, WR, Dn. Mertacity	1/12	BDO, Degana (NREGA)	4.93
		10/11	BDO, Mertacity (NREGA)	4.88
		11/11	BDO, Parbatsar (NREGA)	0.12
		7/11	BDO, Riyanbari (NREGA)	0.29
		9/11	BDO, Kuchamancity (NREGA)	1.13
		6/10	RSMML, Udaipur	0.76
		4/09	BDO, Kolayat (NREGA)	0.12
4	EE, WR, Dn. Udaipur	-	JRY	22.38
		-	EAS	7.60
5	EE WR Dn Jaipur	-	Famine relief, MP LAD, MADA, MLA, JDA etc.	68.70
Total				201.29 i.e. 2.01 crore

Source: Information provided by the department.

Appendix 2.7

(Refer paragraph 2.1.10.5; page 25)

Statement showing non-reconciliation of cheques and challans

(₹ in lakh)

S.No.	Name of Division	Reconciliation with Treasury up to	Difference amount of Cheque	Difference amount of Challan
1.	EE WR Dn II Hanumangarh	1/2012	6.33	0.43
2.	EE WR Dn Suratgarh	1/2012	2.54	(-)0.009
3.	EE WR DN Rawatsar	2/2012	0.20	1.01
4.	EE WR Dn Kota	1/2012	22.86	(-)9.53
5.	EE WR CCP Dn Jhalawar	2/2012	(-)1.14	7.21
6.	EE WR Dn II Chhabra	9/2011	311.07	0.24
7.	EE WR Dn Mertacity	3/2012	(-)3.86	1.14
8.	EE WR NCP Dn I Sanchore	2/2012	16.39	-
9.	EE WR SKAP Dn Dungarpur	2/2012	14.30	2.47
10.	EE WR Dn Chittorgarh	1/2012	17.60	13.85
11.	EE WR Dn Dausa	1/2012	14.94	(-)1.11
12.	EE WR Dn Karauli	2/2012	5.85	(-)0.36
13.	EE WR Dn Dungarpur	12/2011	64.53	5.56
14.	EE WR Dn Jodhpur	3/2012	42.55	8.93
15.	EE WR Dn Jaipur	6/2011	120.43	3.87
16.	EE WR Dn Udaipur	1/2012	139.66	5.48
Total			774.25 i.e. 7.74 crore	39.181 i.e. 0.39 crore

Source: Information provided by the department.

Appendix 2.8

(Refer paragraph 2.1.10.6; page 26)

Statement showing the details of outstanding Miscellaneous P W Advance and Imprest

(₹ in lakh)

S.No.	Name of Division	Imprest/Temp. Advance	Misc. P W Advance
1	EE WR Dn Rawatsar	-	12.64
2	EE WR Dn II Hanumangarh	-	12.84
3	EE WR Dn Suratgarh	-	28.50
4	EE WR Dn Dungarpur	-	6.16
5	EE WR Dn Sikar	0.17	-
6	EE WR Dn II Chhabra	-	0.83
7	EE WR Dn Dausa	7.98	-
8	EE WR Dn Karauli	(T A) 6.13	17.98
Total		14.28	78.95
		i.e. 0.93 crore	

Source: Information provided by the department.

Appendix 2.9

(Refer paragraph 2.1.10.7; page 26)

Statement showing non-recovery of monthly rent from Government servants

S.No	Name of Officers/ Officials S/Sh	Name of office	Period	Amount (₹)
1	Jaipal Singh, Postman	Sub Post Office Suratgarh	1/1977 to 6/2002	10733.00
2	Shyam Sunder, PA	Do	1/2011 to 2/2012	2590.00
3	M.L. Bissa, Postman	Do	9/1991 to 3/2005	18419.00
4	M.C. Kapoor, Postman	Do	8/1991 to 6/1997	8023.00
5	Ram Avtar, Labour	M.E.S.	1/1996 to 12/2002	10164.00
6	S.R. Choudhary	Do	8/1991 to 6/1997	9801.00
7	Munshi Lal Sharma, Jen	B.S.N.L.	9/2002 to 12/2006	16620.00
8	Ram Shakal, labour	Do	10/1995 to 3/2005	10146.00
9	Bhanwar Singh, Labour	Do	1/1990 to 3/2005	16020.00
10	Rishi Kumar, Labour	Do	1/1994 to 7/1999	8194.00
11	Tulsi Ram, Labour	Do	8/1990 to 6/1998	11590.00
12	Ramdhan Maurya, Labour	Do	2/1995 to 6/1997	8023.00
13	Daulat Singh Beldar	Sub Div. Suratgarh	9/2002 to 3/2003	45225.00
14	Sahab Ram, Beldar	Do	12/2009 to 2/2012	26325.00
15	Ganga Ram, Patwari	Sub Div. Pilibanga	4/2003 to 3/2008	77760.00
16	Tikuram, Class IV	G.F.C. Div.	8/2004 to 2/2012	63450.00
17	Balveer Singh, Class IV	C.A.D.	4/2008 to 2/2012	10387.00
18	Banwari Lal O.A.	W.R. Div. Rawatsar	4/2009 to 2/2012	45360.00
19	Smt.Mariyamma, A.N.M.	Govt. Hospital Suratgarh	8/2003 to 3/2007	57024.00
20	Nasib Chand, MPW	Do	11/2002 to 3/2008	43875.00
21	Gopi Chand, Chowkidar	C.A.D.	4/2009 to 2/2012	23625.00
22	Ramji Lal, Class IV	Govt. Hospital Suratgarh	3/2003 to 3/2008	41175.00
23	Vikram Singh, L.D.C.	Education Deptt.	4/2009 to 3/2011	6840.00
Total				571369.00 i.e. 5.71 lakh

Source: Information provided by the department.

Appendix 2.10

(Refer paragraph 2.1.10.10; page 28)

Statement showing non-recovery of water charges from PHED

(₹ in lakh)

S.No.	Name of Division	Outstanding from PHED			
		31/3/2009	31/3/2010	31/3/2011	31/3/2012
1.	EE WR DnII Hanumangarh	-	-	-	12.87
2.	EE WR Dn Suratgarh	4.07	7.86	6.38	4.72
3.	EE WR Dn Rawatsar	-	-	-	11.21
4.	EE WR Dn Udaipur	-	-	-	25.15
5.	EE WR Dn Mertacity	-	-	-	0.10
6.	EE WR Dn Dungarpur	-	-	-	2.06
7.	EE WR Dn Karauli	0.36	0.18	0.39	0.17
8.	EE WR Dn Chittorgarh				21.38
Total					77.66

Source: Information provided by the department.

Appendix 3.1

(Refer paragraph 3.2.1 page 33)

Statement showing road lying incomplete due to proposing alignment of roads through private/forest land										
S. No.	Name of circle / office	Name of AR Road	Administrative and Financial sanction		Disputed length of road	Expenditure incurred (₹ in lakh)	Reasons for dispute	Stoppage the work	Technical estimate (₹ in lakh)	
			Month & years	Amount (₹ in lakh)						length (in Km)
1	ACE, PWD, Jodhpur (RIDF-XV)	Upgradation of Baori to Kelawa	May 2009	81.12	880 m (2/345 to 3/225)	III Final ₹ 48.18 21.05.2010 (7.1.2010)	Alignment passing through private land	3.9.2009	EE,PWD, Dist Jodhpur TS/SE/ Jodhpur 261 /18.6.09 ₹ 80.87	
2	SE, PWD, Pali 4/10 to 3/11 (PMGSY) upgradation	Upgradation Bijapur to Korwa Fanta road	February 2009	422.97	4700 m (8/300 to 11/200 & 15/800 to 17/600)	V final ₹148.75 (24.3.2010)	Alignment passing through forest land	25.6.2009	EE,PWD Bali TS/ACE ,PWD Jodhpur 144/7.2.2009	
3	SE, PWD circle Jalore 4/05 to 3/11 PMGSY (new road)	AR Bhadwal to Kailash nagar	July 2007	63.17	300m (3/400 to 3/700)	VII-final (27.5.2008) ₹ 51.26	Alignment passing through Private area	28.4.2008 revenue track	EE,PWD Bhinmal TS/SE /PWD Jalore 53/24.7.2007 ₹ 63.17	
4	SE, PWD circle Jalore 4/05 to 3/11 PMGSY (new road)	AR Sanchore Bakhasar road km-20 to Godaron ki Dhani	February 2008	125.36	1400m (6/500 to 7/900)	IX R,B, WIP ₹ 95.32	Alignment passing through Private area	25.7.2008 revenue track	EE,PWD Sanchore TS by SE PWD Jalore 73 /16.2.2008 ₹ 102.02	
	Total			692.62 i.e. 6.93 crore	7280 m	₹ 343..51 lakh i.e. 3.44 crore				