

Annexures

Annexure – 1

Statement showing particulars of up to date paid-up capital, loans outstanding and manpower as on 31 March 2012 in respect of Government

Companies and Statutory Corporation

(Referred to in paragraph 1.8)

(Figures in column 5 (a) to 6 (d) are ₹ in lakh)

Sl. No.	Sector & Name of the Company	Name of the Department	Month and year of incorporation	Paid-up Capital [†]			Loans outstanding at the close of 2011-12			Debt equity ratio for 2011-12 (Previous year)	Manpower (No. of employees) (as on 31.3.2012)		
				State Government	Central Government	Others	Total	State Government	Central Government			Others	Total
(1)	(2)	(3)	(4)	5 (a)	5 (b)	5 (c)	5 (d)	6 (a)	6 (b)	6 (c)	6 (d)	(7)	(8)
A. Working Government Companies													
AGRICULTURE & ALLIED													
1.	Jharkhand State Forest Development Corporation Limited	Forest & Environment	27.3.2002	5.00	-	-	5.00	-	-	-	-	-	328
2.	Jharkhand Hill Area Lift Irrigation Corporation Limited	Water Resources	22.3.2002	500.00	-	-	500.00	525.00	-	-	525.00	1.05:1	236
Sector wise total				505.00	-	-	505.00	525.00	-	-	525.00	1.04:1	564
INFRASTRUCTURE													
3.	Jharkhand Industrial Infrastructure Development Corporation Limited	Industry	15.12.2004	900.00	-	-	900.00	-	-	-	-	-	10
4.	Jharkhand Police Housing Corporation Limited	Home	13.03.2002	200.00	-	-	200.00	-	-	-	-	-	70
5.	Greater Ranchi Development Agency Limited	Urban Development	23.01.2003	2500.00 (2450.00)	-	-	2500.00 (2450.00)	-	-	-	-	-	12
Sector wise total				3600.00 (2450.00)	-	-	3600.00 (2450.00)	-	-	-	-	-	92
MANUFACTURING													
6.	Jharkhand Silk Textile and Handicraft Development Corporation Limited (JHARCKRAFT)	Industry	23.08.2006	950.00	-	-	950.00	-	-	725.00	725.00	0.76:1	255
7.	Jharkhand State Mineral Development Corporation Limited	Mines & Geology	07.05.2002	200.00	-	-	200.00	-	-	-	-	-	398
Sector wise total				1150.00	-	-	1150.00	-	-	725.00	725.00	0.63:1	653
POWER													
8.	Tenughat Vidyut Nigam Limited	Energy	26.11.1987	10500.00	-	-	10500.00	66500.00	-	-	66500.00	6.33:1	633

Audit Report on Public Sector Undertakings (General, Social, Economic and Revenue Sectors) for the year ended 31 March 2012

Sl. No.	Sector & Name of the Company	Name of the Department	Month and year of incorporation	Paid-up Capital [§]			Loans outstanding at the close of 2011-12				Debt equity ratio for 2011-12 (Previous year)	Manpower (No. of employees) (as on 31.3.2012)	
				State Government	Central Government	Others	Total	State Government	Central Government	Others			Total
(1)	(2)	(3)	(4)	5 (a)	5 (b)	5 (c)	5 (d)	6 (a)	6 (b)	6 (c)	6 (d)	(7)	(8)
9.	Karanpura Energy Limited	Energy	19.09.2008	-	-	5.00	5.00	-	-	1195.75	1195.75	239.15:1	*
Sector wise total				10500.00	-	5.00	10505.00	66500.00	-	1195.75	67695.75	6.44:1	633
SERVICES													
10.	Jharkhand Tourism Development Corporation Limited	Tourism	22.3.2002	250.00 (100.00)	-	-	250.00 (100.00)	-	-	-	-	-	92
11.	Jharkhand State Beverages Corporation Limited	Excise & Prohibition	26.11.2010	500.00 (300.00)	-	-	500.00 (300.00)	-	-	-	-	-	2
12.	Jharkhand State Food and Civil Supplies Corporation Limited	Public Distribution & Consumer Affairs	18.06.2010	500.00	-	-	500.00	33796.00	-	13000.00	46796.00	93.59:1	272
Sector wise total				1250.00 (400.00)	-	-	1250.00 (400.00)	33796.00	-	13000.00	46796.00	37.44:1	366
Total A (All sector wise working Government companies) (Share Application Money)				17005.00 (2850.00)	-	5.00	17010.00 (2850.00)	100821.00	-	14920.75	115741.75	6.80:1	2308
B. Working Statutory corporations													
POWER													
1.	Jharkhand State Electricity Board	Energy	20.3.2001	-	-	-	-	469419.00	-	17069.00	486488.00	-	5280
Sector wise total				-	-	-	-	469419.00	-	17069.00	486488.00	-	5280
Total B (All sector wise working Statutory corporations)				-	-	-	-	469419.00	-	17069.00	486488.00	-	5280
Grand Total (A + B) (Share Application Money)				17005.00 (2850.00)	-	5.00	17010.00 (2850.00)	570240.00	-	31989.75	602229.75	35.40:1	7588
C. Non working Government companies				-	-	-	-	-	-	-	-	-	-
D. Non working Statutory corporations				-	-	-	-	-	-	-	-	-	-
Grand Total (A + B + C + D) (Share Application Money)				17005.00 (2850.00)	-	5.00	17010.00 (2850.00)	570240.00	-	31989.75	602229.75	35.40:1	7588

The figures appearing in brackets in col. 5(a) & 5(d) represent Share Application Money.

[§] Paid-up capital includes Share Application Money.

* The affairs of the company are managed by the officials of the JSEB.

Source: Data furnished by Government companies/Statutory corporation.

Annexure – 2

Summarised financial results of Government companies and Statutory corporation for the latest year for which accounts were finalised

(Referred to in paragraph 1.15)

(Figures in column 5 (a) to (11) are ₹ in lakh)

Sl. No.	Sector & Name of the Company	Period of Accounts	Year in which finalised	Net Profit/ Loss before Interest & Depreciation		Net Profit/ Interest	Depreciation	Net Profit/ Loss	Turnover	Impact of Accounts Comments [#]	Paid up Capital	Accumulated Profit (+)/ Loss (-)	Capital employed [®]	Return on capital employed ^{\$}	Percentage return on capital employed
				5 (a)	5 (b)										
A. Working Government Companies															
AGRICULTURE & ALLIED															
1.	Jharkhand State Forest Development Corporation Limited	2010-11	2011-12	400.21	-	10.93	389.28	5845.76	-	5.00	1027.53	1027.58	389.28	37.88	
2.	Jharkhand Hill Area Lift Irrigation Corporation Limited	2008-09	2010-11	(-1.78)	-	0.82	(-2.60)	160.65	-	500.00	(-906.74)	118.26	(-2.60)	-	
Sector wise total				398.43	-	11.75	386.68	6006.41	-	505.00	120.79	1145.84	386.68	33.75	
INFRASTRUCTURE															
3.	Jharkhand Industrial Infrastructure Development Corporation Limited	2008-09	2011-12	(-13.62)	-	3.87	(-17.49)	4.36	-	500.00	77.96	609.06	(-17.49)	-	
4.	Jharkhand Police Housing Corporation Limited	2010-11	2011-12	323.76	-	5.84	317.92	313.44	-	200.00	1385.26	1583.00	317.92	20.08	
5.	Greater Ranchi Development Agency Limited	2005-06	2009-10**	-	-	-	-	-	-	-	-	-	-	-	
Sector wise total				310.14	-	9.71	300.43	317.80	-	700.00	1463.22	2192.06	300.43	13.71	
MANUFACTURING															
6.	Jharkhand Silk Textile and Handicraft Development Corporation Limited (JHARCRAFT)	2010-11	2012-13	85.70	12.74	47.82	25.14	1280.09	7.72	800.00	29.76	2343.41	37.88	1.62	

Audit Report on Public Sector Undertakings (General, Social, Economic and Revenue Sectors) for the year ended 31 March 2012

Sl. No.	Sector & Name of the Company	Period of Accounts	Year in which finalised	Net Profit (+)/ Loss (-)			Turnover	Impact of Accounts Comments#	Paid up Capital	Accumulated Profit (+)/ Loss (-)	Capital employed®	Return on capital employed\$	Percentage return on capital employed
				Net Profit/ Loss before Interest & Depreciation	Interest	Depreciation							
(1)	(2)	(3)	(4)	5 (a)	5 (b)	5 (c)	(6)	(7)	(8)	(9)	(10)	(11)	(12)
7.	Jharkhand State Mineral Development Corporation Limited ¹	2006-07	2012-13	1567.97	-	18.10	5195.33	-	200.00	6429.45	8703.04	1549.87	17.81
POWER				1653.67	12.74	65.92	6475.42	7.72	1000.00	6459.21	11046.45	1587.75	14.37
8.	Tenughat Vidyut Nigam Limited ¹	1995-96	2012-13	(-487.23)	8152.82	19.30	-	-	10000.00	(-38686.73)	87032.14	(-506.53)	-
9.	Karampura Energy Limited	\$\$	-	-	-	-	-	-	-	-	-	-	-
SECTOR WISE TOTAL				(-487.23)	8152.82	19.30	-	-	10000.00	(-38686.73)	87032.14	(-506.53)	-
SERVICES													
10.	Jharkhand Tourism Development Corporation Limited	2004-05	2012-13	15.61	-	4.19	103.38	1.47	50.00	44.30	93.67	11.42	12.19
11.	Jharkhand State Beverages Corporation Limited	\$\$	-	-	-	-	-	-	-	-	-	-	-
12.	Jharkhand State Food and Civil Supplies Corporation Limited	\$\$	-	-	-	-	-	-	-	-	-	-	-
Sector wise total				15.61	-	4.19	103.38	1.47	50.00	44.30	93.67	11.42	12.19
Total A (All sector wise working Government companies)				1890.62	8165.56	110.87	12903.01	9.19	12255.00	(-30599.21)	101510.16	1779.75	-
B. Working Statutory Corporations													
Power													
1.	Jharkhand State Electricity Board	2010-11	2011-12	(-27577.91)	39606.01	5098.54	201069.03	10799.00	-	(-607911.90)	315756.00	(-32676.59)	-
Sector wise total				(-27577.91)	39606.01	5098.54	201069.03	10799.00	-	(-607911.90)	315756.00	(-32676.59)	-

Sl. No.	Sector & Name of the Company	Period of Accounts	Year in which finalised	Net Profit (+)/ Loss (-)			Turnover	Impact of Accounts Comments#	Paid up Capital	Accumulated Profit (+)/ Loss (-)	Capital employed®	Return on capital employed\$	Percentage return on capital employed
				Net Profit/ Loss before Interest & Depreciation	Net Profit/ Interest	Depreciation							
(1)	(2)	(3)	(4)	5 (a)	5 (b)	5 (c)	(6)	(7)	(8)	(9)	(10)	(11)	(12)
Total B (All sector wise working Statutory corporations)				(-)27577,91	39606,01	5098,54	201069,03	10799,00	-	(-)607911,90	315756,00	(-)32676,59	-
Grand Total (A + B)				(-)25687,29	47771,57	5209,41	213972,04	10808,19	12255,00	(-)638511,11	417266,16	(-)30896,84	

Note: There is no non-working Government Company/Statutory Corporation in the State of Jharkhand.

Impact of accounts comments include the net impact of comments of Statutory Auditors and CAG and is denoted by (+) increase in profit/ decrease in losses and (-) decrease in profit/ increase in losses.

® Capital employed represents net fixed assets (including capital works-in-progress) plus working capital except in case of finance companies/ corporations where the capital employed is worked out as a mean of aggregate of the opening and closing balances of paid up capital, free reserves, bonds, deposits and borrowings (including refinance).

\$ Return on capital employed has been worked out by adding profit and interest charged to profit and loss account.

** As no financial activities carried out during the financial year 2005-06, no Profit & Loss A/c prepared by the company.

\$\$ The company has not submitted first accounts so far.

1 Supplementary audit of accounts of TVNL (1994-95 & 1995-96) and JSMD (2006-07) are in progress.

Annexure – 3

Statement showing equity, loans, grants and subsidy received/receivable, guarantees received, waiver of dues, loans written off and loans converted into equity during the year and guarantee commitment at the end of March 2012
(Referred to in paragraph 1.11)

(Figures in column 3 (a) to 6 (d) are ₹ in lakh)

Sl. No.	Sector & Name of the Company	Equity/loans received out of budget during the year		Grants and subsidy received during the year				Guarantees received during the year and commitment at the end of the year		Waiver of dues during the year			
		Equity	Loans	Central Government	State Government	Others	Total	Received	Commitment	Loans repayment written off	Loans converted into equity	Interest/penal interest waived	Total
(1)	(2)	3 (a)	3 (b)	4 (a)	4 (b)	4 (c)	4 (d)	5 (a)	5 (b)	6 (a)	6 (b)	6 (c)	6 (d)
A. Working Government Companies													
INFRASTRUCTURE													
1.	GRDA	1300.00	-	-	-	-	-	-	-	-	-	-	-
Sector wise total		1300.00	-	-	-	-	-	-	-	-	-	-	-
MANUFACTURING													
2.	JHARCRAFT	150.00	-	-	-	-	-	-	-	-	-	-	-
Sector wise total		150.00	-	-	-	-	-	-	-	-	-	-	-
SERVICES													
3.	JTDC	100.00	-	-	-	-	-	-	-	-	-	-	-
4.	JSBCL	500.00	-	-	-	-	-	-	-	-	-	-	-
5.	JFCSCL	-	24396.00	-	-	-	-	-	-	-	-	-	-
Sector wise total		600.00	24396.00	-	-	-	-	-	-	-	-	-	-
Total A (All sector wise working Government companies)		2050.00	24396.00	-	-	-	-	-	-	-	-	-	-
B. Working Statutory corporations													
Power													
1.	JSEB	-	16495.00	-	75000.00	-	75000.00	-	-	-	-	-	-
Sector wise total		-	16495.00	-	75000.00	-	75000.00	-	-	-	-	-	-
Total B (All sector wise working Statutory corporations)		-	16495.00	-	75000.00	-	75000.00	-	-	-	-	-	-
Grand Total (A + B)		2050.00	40891.00	-	75000.00	-	75000.00	-	-	-	-	-	-

Source: Data furnished by Government companies/Statutory corporation.

Annexure – 4

Statement showing investments made by State Government in PSUs whose accounts are in arrears

(Referred to in paragraph 1.23)

(₹ in lakh)

Sl No.	Name of PSU	Year upto which accounts finalised	Paid up capital as per latest finalised accounts	Period during which accounts are in arrears	Investment made by State Government during the years for which accounts are in arrears			
					Equity	Loan	Grant	Others
Working Companies/Corporations								
A. Government companies								
1.	Jharkhand Hill Area Lift Irrigation Corporation Limited	2008-09	500.00	2009-10	-	-	180.00	-
				2010-11 to 2011-12	-	-	-	-
2.	Jharkhand Police Housing Corporation Limited	2010-11	200.00	2011-12	-	-	-	-
3.	Jharkhand Tourism Development Corporation Limited	2004-05	50.00	2005-06	25.00	-	-	-
				2006-07	-	-	-	-
				2007-08	-	-	-	-
				2008-09	-	-	-	-
				2009-10	25.00	-	-	-
				2010-11	50.00	-	-	-
				2011-12	100.00	-	-	-
4.	Jharkhand State Forest Development Corporation Limited	2010-11	5.00	2011-12	-	-	-	-
5.	Jharkhand State Mineral Development Corporation Limited	2006-07	200.00	2007-08 to 2011-12	-	-	-	-
6.	Jharkhand Industrial Infrastructure Development Corporation Limited	2008-09	500.00	2007-08	100.00	-	-	-
				2008-09	100.00	-	-	-
				2009-10	100.00	-	-	-
				2010-11	100.00	-	-	-
				2011-12	-	-	-	-
7.	Greater Ranchi Development Agency Limited	2005-06	-	2005-06	50.00	-	-	-
				2006-07	-	-	-	-
				2007-08	110.00	-	-	-
				2008-09	940.00	-	-	-
				2009-10	100.00	-	-	-
				2010-11	-	-	-	-
				2011-12	1300.00	-	-	-
8.	Tenughat Vidyut Nigam Limited	1995-96	10000.00	1995-96 to 2000-01	-	-	-	-
				2001-02	-	1500.00	-	-
				2002-03	-	1500.00	-	-
				2003-04	-	-	-	-
				2004-05	-	500.00	-	-
				2005-06	500.00	1400.00	-	-
				2006-07	-	800.00	-	-
				2007-08 to 2011-12	-	-	-	-
9.	Jharkhand Silk and Handicraft Development Corporation Limited	2010-11	800.00	2011-12	150.00	-	-	-

*Audit Report on Public Sector Undertakings (General, Social, Economic and Revenue Sectors)
for the year ended 31 March 2012*

Sl No.	Name of PSU	Year upto which accounts finalised	Paid up capital as per latest finalised accounts	Period during which accounts are in arrears	Investment made by State Government during the years for which accounts are in arrears			
					Equity	Loan	Grant	Others
10.	Karanpura Energy Limited	-	-	2008-09 to 2011-12	-	-	-	-
11.	Jharkhand State Beverages Corporation Limited	-	-	2010-11	-	-	-	-
				2011-12	500.00	-	-	-
12.	Jharkhand State Food and Civil Supplies Corporation Limited	-	-	2010-11	500.00	9400.00	-	-
				2011-12	-	24396.00	-	-
Total (A)		-	-		4750.00	42596.00	180.00	-
B Statutory corporation								
1.	Jharkhand State Electricity Board	2010-11	-	2011-12	-	16495.00	75000.00	-
Total(B)					-	16495.00	75000.00	-
Total (A)+(B)			11255.00		4750.00	59091.00	75180.00	-

Source: Data furnished by Government companies/Statutory corporation.

Annexure – 5

Statement showing financial position of Statutory corporation

(Referred to in paragraph 1.15)

(Amount: ₹ in crore)

JHARKHAND STATE ELECTRICITY BOARD			
Particulars	2008-09	2009-10	2010-11
A. Assets			
Gross Block	1938.42	1982.01	2351.60
Less: Depreciation	1014.76	1064.55	1115.61
Net Fixed Assets	923.66	917.46	1235.99
Capital Expenditure in progress	1515.15	1815.03	1813.99
Assets not in use	2.29	2.29	2.29
Investment	108.11	162.10	200.27
Total Current Assets	4274.24	4013.19	4740.45
Deficit	4649.72	5356.29	6079.12
Total A	11473.17	12266.36	14072.11
B. Liabilities			
Borrowings for working Capital	-	73.92	218.98
Payment due on capital liabilities	3559.90	3745.38	4481.13
Capital liabilities	231.62	264.39	210.10
Funds from State Government	3219.91	3005.93	2958.65
Contributions, Grants and Subsidies	1396.20	1494.91	1570.38
Total Current liabilities	3065.54	3681.83	4632.87
Total B	11473.17	12266.36	14072.11
C. Capital Employed*	3647.51	3063.85	3157.56

* Capital employed represents net fixed assets (including Capital Expenditure-in-Progress) plus working capital.

Annexure – 6

Statement of working results of Statutory corporation

(Referred to in paragraph 1.15)

(Amount: ₹ in crore)

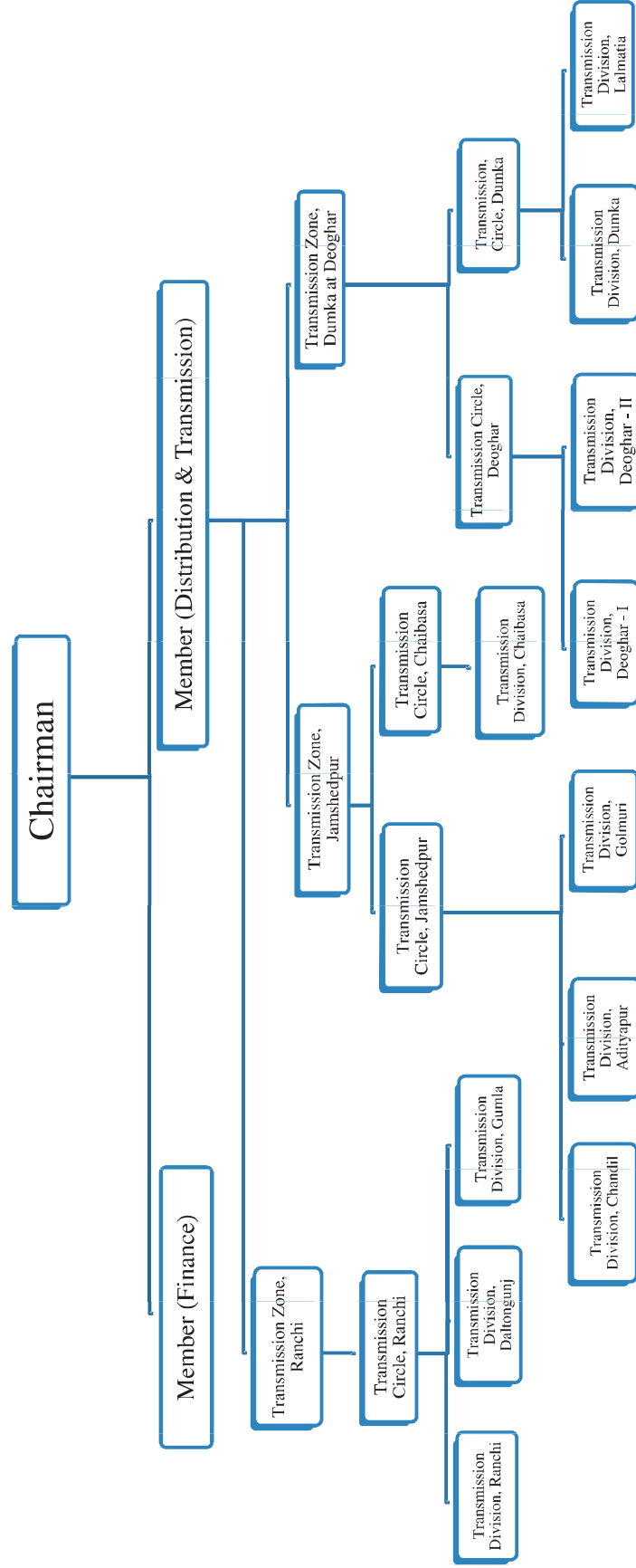
Jharkhand State Electricity Board					
Sl. No.		Particulars	2008-09	2009-10	2010-11
1.	a.	Revenue Receipts	1584.91	1634.37	2010.69
	b.	Revenue Subsidies and Grants, Other income	365.08	701.44	652.85
	c.	Total	1949.99	2335.81	2663.54
2.		Revenue expenditure (net of expenses capitalised including write off of intangible assets but excluding depreciation and interest)	2444.79	2385.22	3036.58
3.		Gross surplus (+)/ deficit (-) for the year (Dr.)	(-) 494.80	(-) 49.41	(-) 373.04
4.		Adjustment relating to previous year (Dr.)	(-) 47.98	(-) 147.44	97.26
5.		Final gross surplus (+)/deficit (-) for the year (3+4)	(-) 542.78	(-) 196.85	(-) 275.78
6.		Appropriation			
	A)	Depreciation	48.40	49.79	50.99
	B)	Interest on Capital / Loans	559.13	609.75	554.67
	C)	Interest on the other Loans, Advances etc.	-	-	-
	D)	Total Interest on Loans (B+C)	559.13	609.75	554.67
	E)	Less Interest Capitalised	102.08	149.82	158.61
	F)	Net Interest charged to revenue (D-E)	457.05	459.93	396.06
7.		Surplus (+) Deficit (-) before account of subsidy from State Government (5-6A-6F-1b) (grant only)	(-) 1128.24	(-) 1106.57	(-) 1172.83
8.		Net surplus (+) Deficit (-) (5-6A-6F)	(-) 1048.24	(-) 706.57	(-) 722.83
9.		Total return on capital employed * (8+6F)	(-) 591.19	(-) 246.64	(-) 326.76
10.		Percentage of return on capital employed	-	-	-

* Total return on capital employed represents net surplus/deficit plus total interest charged to profit and loss account (less interest capitalised).

Annexure – 7

Organisational Chart of the Board

(Referred to in paragraph 2.2)



Annexure- 8

Statement showing voltage-wise capacity additions planned, actual additions and shortfall during five years up to 2011-12

(Referred to in paragraph 2.12)

Sl.No.	Description	2007-08	2008-09	2009-10	2010-11	2011-12
(1)	(2)	(3)	(4)	(5)	(6)	(7)
400 kV Sub-Stations (Numbers)						
1	At the beginning of the year	0	0	0	0	0
2	Additions Planned for the year	0	0	0	1	5
3	Actual Additions during the year	0	0	0	0	0
4	At the end of the year (1+3)	0	0	0	0	0
5	Shortfall in Additions (2-3)	0	0	0	1	5
400 kV Transformers Capacity (MVA)						
1	At the beginning of the year	0	0	0	0	0
2	Additions/ augmentation Planned for the year	0	0	0	630	3150
3	Actual Additions during the year	0	0	0	0	0
4	Capacity at the end of the year (1+3)	0	0	0	0	0
5	Shortfall in Additions/ Augmentation (2-3)	0	0	0	630	3150
400 kV Lines (Ckm)						
1	At the beginning of the year	180	180	180	180	180
2	Additions Planned for the year	0	0	0	100	1570
3	Actual Additions during the year	0	0	0	0	0
4	At the end of the year (1+3)	180	180	180	180	180
5	Shortfall in Additions (2-3)	0	0	0	100	1570
220 kV Sub-Stations (Numbers)						
1	At the beginning of the year	2	3	3	3	3
2	Additions Planned for the year	1	0	1	5	3
3	Actual Additions during the year	1	0	0	0	0
4	At the end of the year (1+3)	3	3	3	3	3
5	Shortfall in Additions (2-3)	0	0	1	5	3
220 kV Transformers Capacity (MVA)						
1	At the beginning of the year	750	1050	1050	1050	1050
2	Additions/ augmentation Planned for the year	300	0	300	1500	900
3	Actual Additions during the year	300	0	0	0	0
4	Capacity at the end of the year (1+3)	1050	1050	1050	1050	1050
5	Shortfall in Additions/ Augmentation (2-3)	0	0	300	1500	900

220 kV Lines (Ckm)						
1	At the beginning of the year	783	903	903	903	903
2	Additions Planned for the year	120	0	407	1654	100
3	Actual Additions during the year	120	0	0	0	0
4	At the end of the year (1+3)	903	903	903	903	903
5	Shortfall in Additions (2-3)	0	0	407	1654	100
132 kV Sub-Station (Numbers)						
1	At the beginning of the year	17	18	22	26	26
2	Additions Planned for the year	1	4	5	18	4
3	Actual Additions during the year	1	4	4	0	0
4	At the end of the year (1+3)	18	22	26	26	26
5	Shortfall in Additions (2-3)	0	0	1	18	4
132 kV Transformers Capacity (MVA)						
1	At the beginning of the year	1338	1438	1828	2198	2208
2	Additions/ augmentation Planned for the year	100	390	470	2210	400
3	Actual additions ¹ / augmentation during the year	100	390	370	10	10
4	Capacity at the end of the year (1+3)	1438	1828	2198	2208	2218
5	Shortfall in Additions/ Augmentation (2-3)	0	0	100	2200	390
132 kV Lines (Ckm)						
1	At the beginning of the year	1159	1252	1301	1301	1441
2	Additions Planned for the year	93	135	130	2046	480
3	Actual Additions during the year	93	49	0	140	0
4	At the end of the year (1+3)	1252	1301	1301	1441	1441
5	Shortfall in Additions (2-3)	0	86	130	1906	480

¹ It includes GSSs at Daltonganj, Latehar and Kanke having capacity of 100 MVA each constructed in October 2007, January 2009 and December 2009 respectively, but not charged so far (November 2012).

Annexure-9

List of the State Public Sector Undertakings and their Paid-up capital in Jharkhand

(Referred to in paragraph 3.4.1)

Sl. No	Name of the Company	Paid up Capital as on 31 March 2012 (₹ in crore)
1.	Jharkhand Hill Area Lift Irrigation Corporation Limited (JHALCO)	5.00
2.	Jharkhand Industrial Infrastructure Development Corporation Limited (JIIDCO)	9.00
3.	Jharkhand Silk Textile and Handicraft Development Corporation Limited (JHARCRAFT)	9.50
4.	Tenughat Vidyut Nigam Limited (TVNL)	105.00
5.	Jharkhand Police Housing Corporation Limited (JPHCL)	2.00
6.	Jharkhand Tourism Development Corporation Limited (JTDC)	2.50
7.	Jharkhand State Forest Development Corporation Limited (JSFDC)	0.05
8.	Greater Ranchi Development Agency Limited (GRDA)	25.00
9.	Jharkhand State Mineral Development Corporation Limited (JSMDC)	2.00
10.	Karanpura Energy Limited (KEL)	0.05
11.	Jharkhand State Beverages Corporation Limited (JSBCL)	5.00*
12.	Jharkhand State Food & Civil Supplies Corporation Limited (JSFCSCL)	5.00 [#]

Corporate Governance of the Companies at Sl. No. 1 to 9 are covered under the paragraph

* Date of incorporation – 26.11.2010

Date of incorporation – 18.06.2010

Annexure -10

Details of violations of section 285 of Companies Act, 1956 by the Companies during April 2007 to March 2012

(Referred to in paragraph 3.4.2)

Sl. No.	Name of the Company	Quarter during which no meeting of Board of Director held	Number of times Sec. 285 violated	Maximum time gap between two meetings of the Board
1.	Jharkhand Hill Area Lift Irrigation Corporation Limited (JHALCO)^	Oct – Dec 2007, Jan – Mar 2008, Jul – Sep 2008, Oct – Dec 2008, Apr – Jun 2009, Oct – Dec 2009, Jan – Mar 2010	7	11 months 3 days
2.	Jharkhand Industrial Infrastructure Development Corporation Limited (JIIDCO)	July-Sep 2007, Jan –Mar 2008, Apr - Jun 2008, Jul – Sep 2008, Oct – Dec 2008, Jan – Mar 2009, Apr - Jun 2009, Oct –Dec 2009, Jan – Mar 2010, Jul – Sep 2010, Oct – Dec 2010, Jan – Mar 2011, Jul – Sep 2011, Oct – Dec 2011, Jan – Mar 2012	15	21 months 20 days
3.	Jharkhand Silk Textile and Handicraft Development Corporation Limited (JHARCRAFT)	Apr – Jun 2007,Jan – Mar 2008, Apr – Jun 2008,Oct – Dec 2008, Jan – Mar 2009,Oct – Dec 2009, Apr – Jun 2011, Oct – Dec 2011	8	7 months 3 days
4.	Tenughat Vidyut Nigam Limited (TVNL)	Apr- Jun 2007, Jul – Sep 2007, Jul – Sep 2008, Oct – Dec 2008, Jan – Mar 2009, Jul – Sep 2009, Oct – Dec 2009, Jan – Mar 2010, Oct – Dec 2010, Jan – Mar 2012	10	15 months 21 days
5.	Jharkhand Police Housing Corporation Limited (JPHCL)	Jul – Sep 2007, Oct – Dec 2007, Jan – Mar 2009, Oct – Dec 2009, Jan – Mar 2010, Oct – Dec 2010, Jan – Mar 2011, Apr – June 2011, Oct – Dec 2011, Jan – Mar 2012	10	10 months 2 days
6.	Jharkhand Tourism Development Corporation Limited (JTDC)	Oct – Dec 2007, Jul – Sep 2008, Oct – Dec 2008, Jan – Mar 2009, Oct – Dec 2009, Jan – Mar 2010, Jul – Sep 2010, Oct – Dec 2010, Jan – Mar 2011, Apr – Jun 2011, Jul – Sep 2011, Oct – Dec 2011	12	18 months 5 days
7.	Jharkhand State Forest Development Corporation Limited (JSFDC)	Oct – Dec 2007, Jan – Mar 2009, Apr – Jun 2009, Jan – Mar 2010, Jan – Mar 2011	5	8 months 5 days
8.	Jharkhand State Mineral Development Corporation Limited (JSMDC)	Jan-Mar 2007, Jul-Sep 2007, Oct – Dec 2007, Jan-Mar 2008, Apr- Jun 2008, Jul – Sep 2008, Oct-Dec 2008, Jan – Mar 2009, Apr- Jun 2009, Oct – Dec 2009, Apr- Jun 2010.	11	25 months 05 days

9.	Greater Ranchi Development Agency Limited (GRDA)	Apr- Jun 2007, Jul-Sep 2007, Oct – Dec 2007, Jan-Mar 2008, Oct-Dec 2008, Apr- Jun 2009 Jul-Sep 2009, Oct – Dec 2009, Jan-Mar 2010, Apr- Jun 2010, Oct-Dec 2010, Jan-Mar 2011, Sep-Dec 2011	13	19 months 23 days
----	--	--	----	-------------------

^ Information based on Board Minutes Register maintained in by the respective Company.

Annexure-11

Statement showing attendance of the Directors in the Board meetings during their tenure
for the period April 2007 to March 2012

(Referred to in paragraph 3.4.2)

Sl. No.	Name of the Company	Name of the Director	Number of meetings	
			Held during his tenure	Attended
1.	Jharkhand Industrial Infrastructure Development Corporation Limited (JIIDCO)	A. K. Basu	4	1
		Mukhtiar Singh	4	1
		Smt. Rajbala Verma	2	Nil
2.	Jharkhand Tourism Development Corporation Limited (JTDC)	Amitabh Choudhary	1	Nil
		K.S. Meena	1	Nil
3.	Jharkhand Silk Textile and Handicraft Development Corporation Limited (JHARCRAFT)	Smt. Rajbala Verma	6	2
		Mukhtiar Singh	2	1
4.	Jharkhand Police Housing Corporation Limited (JPHCL)	Smt. Rajbala Verma	10	3
		Mukhtiar Singh	2	1
		Sudhir Tripathi	6	2
		Surya Dev Prasad	4	1
		Yogeshwar Mochi	2	1
		Sukhdeo Singh	5	3
		G.S. Rath	3	1
5.	Tenughat Vidyut Nigam Limited (TVNL)	The Directors attended all the meetings of Board during their tenure		
6.	Jharkhand State Forest Development Corporation Limited (JSFDC)	R.K. Zutsi	2	1
		Sudhir Mahto	6	1
		Sudesh Mahto	6	1
		A.K. Chugh	1	Nil
		Smt. Rajbala Verma	9	1
		Sukhdeo Singh	8	2
7.	Jharkhand Hill Area Lift Irrigation Corporation Limited (JHALCO)	Information was not received		
8.	Jharkhand State Mineral Development Corporation Limited (JSMDC)	Secretary Dept. of Finance	4	Nil
		R.S. Poddar	2	1
		Smt. Rajbala Verma	3	Nil
		S.K. Chaudhary	3	Nil
		K.K. Khandelwal	1	Nil
		A.K.Sarkar	9	4
		A.P.Singh	8	1
9.	Greater Ranchi Development Agency Limited (GRDA)	Ashok Kumar Singh	3	2
		Nitin Kullkarni	5	3
		Sukhdeo Singh	6	3
		L. Khiantge	3	2

Annexure – 12

Details of Managing Directors for whose tenure was less than a year

(Referred to in paragraph 3.4.2)

Sl. No.	Name of the Company	Name of Managing Directors	Tenure	Period
1.	Tenughat Vidyut Nigam Limited (TVNL)	S. N. Choudhury	25.09.2010 to 18.10.2010	23 days
2.	Jharkhand Police Housing Corporation Limited (JPHCL)	H.K. Mishra	24.02.2009 to 21.12.2009	9 months 28 days
3.	Jharkhand Tourism Development Corporation Limited (JTDC)	Abraham Rowna	11.05.2009 to 07.12.2009	6 months 27 days
		Nilima Kerketta	08.12.2009 to 10.06.2010	7 months 2 days
4.	Jharkhand State Mineral Development Corporation Limited (JSMDC)	Bhagwan Prasad	04.08.2009 to 07.06.2010	10 months 3 days
5.	Greater Ranchi Development Agency Limited (GRDA)	Arun Kumar Singh	01.01.2008 to 03.11.2008	11 months 2 days
		Arun Kumar Singh	23.10.2009 to 15.04.2010	5 months 22 days
		P.K. Jajoria	15.04.2010 to 06.04.2011	11 months 21 days

Annexure-13

Details of delay in filing Annual Return by the companies with Registrar of Companies under Section 159 of the Companies Act, 1956.

(Referred to in paragraph 3.4.3)

Sl. No.	Name of the company	Annual Return for the year	Date of filing Annual Return	Delay in filing Annual Return	Annual Return not filed in the years
1.	Jharkhand Hill Area Lift Irrigation Corporation Limited (JHALCO)	2006-07	10.03.2008	3 months (app)	2007-08 2008-09 2009-10 2010-11
2.	Jharkhand Industrial Infrastructure Development Corporation (JIIDCO)	2006-07	24.07.2010	2 years and 8 months (app)	2009-10, 2010-11
		2007-08	08.07.2011	2 years and 7 months (app)	
		2008-09	08.07.2011	1 year and 7 months (app)	
3.	Jharkhand Silk Textile and Handicraft Development Corporation Limited (JHARCRAFT)	2006-07	03.09.2010	2 years and 9 months (app)	2010-11
		2007-08	03.09.2010	1 year and 9 months (app)	
		2008-09	12.07.2011	1 year and 7 months (app)	
		2009-10	12.07.2011	7 months (app)	
		2010-11	30.10.2011	No delay	
4.	Tenughat Vidyut Nigam Limited (TVNL)	Annual Returns have not been filed from 1993-94.			
5.	Jharkhand Police Housing Corporation Limited (JPHCL)	2006-07	18.02.2009	1 year and 3 months (app)	-
		2007-08	21.01.2009	01 month 24 days	
		2008-09	31.01.2011	1 year and 02 months (app)	
		2009-10	12.03.2011	01 month 17 days	
		2010-11	22.03.2012	03 months 23 days	
6.	Jharkhand Tourism Development Corporation Limited (JTDC)	2006-07	Not filed	Not filed	2006-07, 2008-09, 2009-10, 2010-11.
		2007-08	27.11.2008	20 days	
7.	Jharkhand State Forest Development Corporation Limited (JSFDC)	2006-07	12.03.2011	3 years and 3 months (app)	-
		2007-08	12.03.2011	2 years and 4 months (app)	
		2008-09	12.03.2011	1 year and 4 months (app)	

		2009-10	12.03.2011	4 months (app)	
		2010-11	07.11.2011	No delay	
8.	Jharkhand State Mineral Development Corporation Limited (JSMDC)	Annual Return was not filed till date			Since incorporation (incorporated on 7.05.2002)
9.	Greater Ranchi Development Agency Limited (GRDA)	2007-08	23.09.2011	3 years and 9 months 23 days	--
		2008-09	23.09.2011	2 years and 9 months 23 days	
		2009-10	23.09.2011	1 year and 9 months 23 days	
		2010-11	23.09.2011	2 months	

Annexure-14

Details of Annual Accounts filed by the companies with ROC u/s 220 of the Companies Act, 1956

(Referred to in paragraph 3.4.3)

Sl. No.	Name of the Company	Annual Accounts for the year	Date of filing Annual Accounts	Delay in filing Annual Accounts	Annual Accounts not filed in the years
1.	Jharkhand Hill Area Lift Irrigation Corporation Limited (JHALCO)	Balance Sheet and Profit and loss Accounts have not been filed since 2004-05.			
2.	Jharkhand Industrial Infrastructure Development Corporation Limited (JIIDCO)	2006-07	24.07.2010	2 years and 9 months (app)	2009-10 and 2010-11
		2007-08	08.07.2011	2 years and 9 months (app)	
		2008-09	08.07.2011	1 year and 8 months (app)	
3.	Jharkhand Silk Textile and Handicraft Development Corporation Limited (JHARCRAFT)	2006-07	07.07.2011	3 years and 7 months (app)	2010-11
		2007-08	08.07.2011	2 years and 7 months (app)	
		2008-09	12.07.2011	1 year and 7 months (app)	
		2009-10	12.07.2011	7 months (app)	
4.	Tenughat Vidyut Nigam Limited (TVNL)	Balance Sheet and Profit and loss Accounts have not been filed from 1993-94.			
5.	Jharkhand Police Housing Corporation Limited (JPHCL)	2006-07	18.02.2009	1 year and 04 months (app)	
		2007-08	21.01.2009	2 months 24 days	
		2008-09	31.01.2011	1 year and 03 months (app)	
		2009-10	12.03.2011	1 month 17 days	
		2010-11	22.03.2012	4 months 23 days	
6.	Jharkhand Tourism Development Corporation Limited (JTDC)	2006-07	Not filed	Not filed	2006-07, 2008-09, 2009-10 and 2010-11.
		2007-08	27.11.2008	1 month 20 days	
7.	Jharkhand State Forest Development Corporation Limited (JSFDC)	2006-07	28.02.2012	4 years and 4 months (app)	2010-11
		2007-08	28.02.2012	3 years and 4 months (app)	
		2008-09	17.03.2011	2 years and 5 months (app)	
		2009-10	07.11.2011	1 year (app)	

8.	Jharkhand State Mineral Development Corporation Limited (JSMDC)	Balance Sheet and Profit and loss Accounts have not been filed from incorporation (7 May 2002).
9.	Greater Ranchi Development Agency Limited (GRDA)	Balance Sheet and Profit and loss Accounts have not been filed from incorporation (23 January 2003).

Annexure-15

Details of Annual General Meetings held by the Companies

(Referred to in paragraph 3.4.4)

Sl. No.	Name of the Company	Sl. No. of AGM	Financial Year	Date of AGM	AGM not held for the years
1.	Jharkhand Hill Area Lift Irrigation Corporation Limited (JHALCO)	5 th	2006-07	28.09.2007	2010-11
		6 th	2007-08	24.09.2008	
		7 th	2008-09	02.02.2010	
		8 th	2009-10	27.09.2010	
2.	Jharkhand Industrial Infrastructure Development Corporation (JIIDCO)	1 st	2006-07	26.08.2009	2007, 2008, 2009, 2010 and 2011.
		2 nd	2007-08	16.04.2010	
		3 rd	2008-09	13.06.2011	
		4 th	2009-10	13.06.2011	
3.	Jharkhand Silk Textile and Handicraft Development Corporation Limited (JHARCRAFT)	1 st	2006-07	29.09.2007	2009 and 2010
		1 st Adjourned	2006-07	23.09.2008	
		2 nd	2007-08	26.09.2008	
		3 rd	2008-09	20.06.2011	
		4 th	2009-10	20.06.2011	
		5 th	2010-11	24.09.2011	
4.	Tenughat Vidyut Nigam Limited (TVNL)	No AGM was held			
5.	Jharkhand Police Housing Corporation Limited (JPHCL)	5 th	2006-07	28.09.2007	AGMs were held regularly
		5 th Adjourned	2006-07	08.08.2008	
		6 th	2007-08	27.09.2008	
		6 th Adjourned	2007-08	19.12.2008	
		7 th	2008-09	16.09.2009	
		7 th Adjourned	2008-09	25.09.2009	
		8 th	2009-10	25.09.2010	
		8 th Adjourned	2009-10	05.08.2011	
		9 th	2010-11	29.09.2011	
6.	Jharkhand Tourism Development Corporation Limited (JTDC)	1 st	2002-03	18.09.2003	2007, 2010 and 2011
		1 st Adjourned	2002-03	28.04.2008	
		2 nd	2003-04	12.08.2004	
		2 nd Adjourned	2003-04	29.06.2009	
		3 rd	2004-05	Not Held	
		4 th	2005-06	25.09.2006	
		5 th	2006-07	28.04.2008	
		6 th	2007-08	29.09.2008	
		7 th	2008-09	07.09.2009	
7.	Jharkhand State Forest Development Corporation	5 th	2006-07	28.09.2007	AGMs were held regularly
		6 th	2007-08	25.09.2008	

	Limited (JSFDC)	7 th	2008-09	10.09.2009	
		8 th	2009-10	20.09.2010	
		9 th	2010-11	29.09.2011	
8.	Jharkhand State Mineral Development Corporation Limited (JSMDC)	1 st	2002-03	02.02.2012	2006-07, 2007-08, 2008-09, 2009-10 and 2010-11
		2 nd	2003-04	02.02.2012	
		3 rd	2004-05	02.02.2012	
		4 th	2005-06	23-06-2012	
9.	Greater Ranchi Development Agency Limited (GRDA)	1 st to 5 th	2003-04 to 2007-08	26-06-2008	2007 and 2009
		6 th	2008-09	30-09-2010	
		7 th	2009-10	30-09-2010	
		8 th	2010-11	27-09-2011	

Annexure-16

Statement showing paragraphs/Performance Audits for which replies were not received

(Referred to in paragraph-3.6.1)

Sl. No.	Name of Department	2007-08		2008-09		2009-10		2010-11	
		No. of paras in Audit Report	No. of paras for which replies were not received	No. of paras in Audit Report	No. of paras for which replies were not received	No. of paras in Audit Report	No. of paras for which replies were not received	No. of paras in Audit Report	No. of paras for which replies were not received
1.	Energy	7	7	4	4	6	6	2	2
2.	Forest & Environment	-	-	1	1	-	-	-	-
3.	Home	1	1	-	-	1	1	1	1
4.	Mines & Geology	1	-	-	-	-	-	1	1
	Total	9	8	5	5	7	7	4	4

Annexure-17

Statement of department-wise outstanding Inspection Reports (IRs)

(Referred to in paragraph-3.6.3)

Sl. No.	Name of Department	No. of PSUs	No. of outstanding IRs	No. of outstanding paragraphs	Year from which paragraphs outstanding
1.	Energy	2	287	1119	2005-06
2.	Forest & Environment	1	23	76	2006-07
3.	Mines and Geology	1	4	18	2010-11
4.	Tourism	1	10	38	2007-08
5.	Industry	2	5	21	2007-08
6.	Home	1	13	63	2006-07
7.	Water Resources	1	13	41	2006-07
8.	Urban Development	1	2	12	2009-10
Total		10	357	1388	

Annexure-18

Statement of department-wise draft paragraphs replies to which were awaited

(Referred to in paragraph-3.6.3)

Sl. No.	Name of Department	No. of draft paragraphs	Period of issue
1.	Energy	2	June 2012 to July 2012
2.	Forest & Environment	1	May 2012
3.	Home	1	May 2012
4.	Energy, Forest & Environment, Home, Industry, Tourism and Water Resources	1	July 2012
	Total	5	-