



Annual Review Report

on

Working of Public Works Divisions

(Public Works,
Public Health Engineering,
Water Resources, and
Minor Irrigation Departments)

Manipur State

2020-21



Principal Accountant General (A&E)
Manipur, Imphal

PREFACE

The Annual Review on working of the Public Works Divisions is prepared as per instruction contained in Para 8.54 of C.A.G M.S.O. (A&E) irregularities/deficiencies noticed in maintenance and submission of accounts and in the functioning of the Public Works, Public Health Engineering, Water Resources and Minor Irrigation Divisions in the State of Manipur.

The review includes audit observations noticed during local audit. There is a scope for improvement in the upkeep, maintenance, and submission of accounts by the State PW Divisions. The State Government need to take urgent steps to remove the deficiencies/irregularities pointed out in this Review.

I hope this Annual Review for the year 2020-21 will help improve the functioning of these departments and the divisions to ensure better quality in preparation, maintenance and timely submission of Monthly Accounts to the Accountant General.

(John K. Sellate)
Principal Accountant General (A&E)

Imphal

Date:

1. Introduction

The Annual Review on the working of Public Works Divisions comprising of four Departments, Public Works (PWD), Public Health Engineering (PHED), Water Resources(WRD) and Minor Irrigation (MID), has been prepared with the objective of presenting the status of maintenance of initial and subsidiary accounts and the rendition of Monthly Accounts by Divisions to the Accountant General.

The review aims to highlight in general, the non-adherence of codes and rules by various units working under the PWD. The accounting transactions of PWD include receipt and payment under various relevant heads. There is an established accounting procedure prescribed for PWD under which compiled accounts are submitted to the O/o. The Principal Accountant General (A&E), Manipur. The financial, accounting and administrative rules and procedures to be followed by the PWD have been elaborated in Departmental Financial Rules, Manipur Financial Rules, Account Code Vol.-III and Manuals of the Department. Any deviation from these rules and procedures by the PWD authorities affects the entire process of financial accountability. It is, therefore, essential to ensure that the Departments exercise essential controls with necessary checks and balances in place and have the requisite internal control structure.

The Review has been divided into two parts. Part-A includes the irregularities/defects and omissions noticed during the checking of Monthly Accounts and Part-B include irregularities, objections and shortcomings noticed during Central Audit and local Audit of Public Works Divisions.

2. Public Works Divisions

The number of divisions in the PWD, PHED, WRD and MID during 2020-21 were as under:

Sl. No.	Name of Department	No. of Divisions			
		At the commencement of 2020-21	Created during 2020-21	Abolished during 2020-21	At the close of 2020-21
1	PWD	33	-	-	33
2	PHED	25	-	-	25
3	WRD	20	-	-	20
4	MID	5	-	-	5
	Total	83	-	-	83

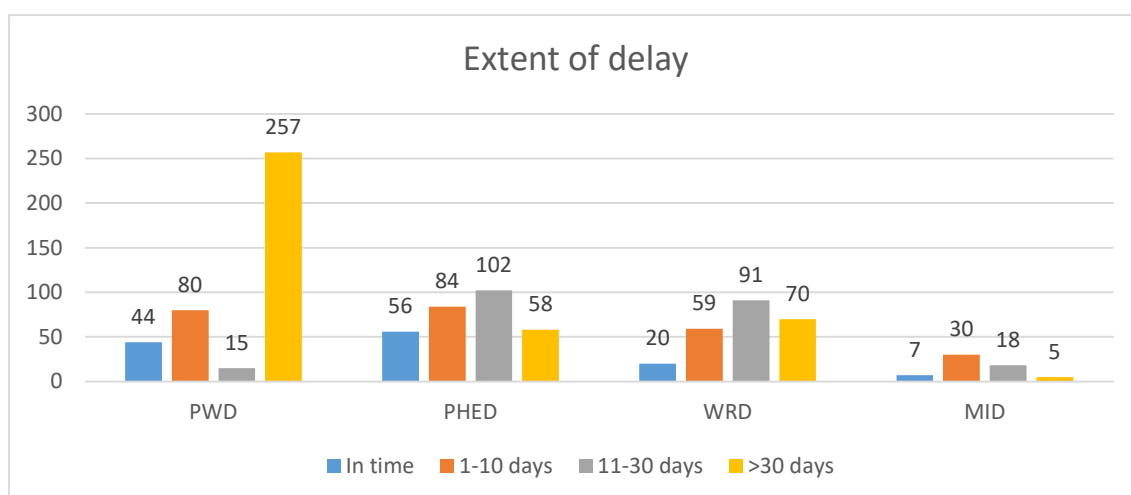
PART – A (ACCOUNTS)

1. Delay in submission of Monthly Accounts.

Monthly Accounts of the divisions should reach the office of the Accountant General (A&E) not later than 10th of the following month to which they relate. However, during the course of review it was noticed that 869 (87.25 per cent) accounts out of 996 accounts were not received within the due dates, thereby causing delay in compilation and consolidation of the accounts of the State as whole. Statements showing the extent of delay in number of days are enclosed in **Annexure – A to D**. Following table shows the status of receipt of accounts:

Sl. No.	Name of Department	Total no. of accounts to be received	No. of accounts received in time	No. of accounts delayed	Range of delay (Days)
1	PWD	396	44	352	1-84
2	PHED	300	56	244	1-60
3	WRD	240	20	220	1-142
4	MID	60	7	53	1-42
	Total	996	127	869	1-142

1.1 Extent of Delay in submission of Monthly Accounts by Divisions



As such, urgent action needs to be initiated from the highest level to ensure timely submission of the Monthly Accounts by the Divisions so as to enable this office to prepare the Monthly Civil Accounts and in turn submit to the State Government in time.

2. Schedule of Misc. Public Work Advances

In terms of Para 13.4.1 of Central Public Works Accounts Code, transactions recorded under the head “Miscellaneous Public Works Advances” are divided into four classes:

- (a) Sales on credit.
- (b) Expenditure incurred on Deposit Works in excess of deposits received.
- (c) Losses, retrenchments, errors, etc.
- (d) Other items.

In terms of Para 22.4.16, a Schedule of Misc. Public Works Advances in CPWA Form 70 should be prepared and furnished along with the monthly account, month after month, so long as there are balances outstanding under the accounts concerned. This schedule should be restricted to the items affected during the month. Besides, a list of items outstanding for more than six months is required to be furnished to the Accountant General (A&E), Manipur half yearly with Monthly Accounts of September and March. However, none of the divisions rendered the Schedule of Misc. Public Works Advances along with the Monthly Accounts as per codal provisions.

Appropriate action may be initiated to ensure furnishing the Schedules of Misc. Public Works Advances along with divisional accounts.

3. Cash Settlement Suspense Accounts (CSSA)

There was no transaction under Major Head “8658-107-Cash Settlement Suspense Account” during the year 2020-21. However, there was an outstanding balance of `47.19 crore (Dr.) as on 31st March, 2021. The concerned Departments may take necessary steps to clear the balances.

4. Non-submission of Schedule of Reconciliation of Cheques & Remittances (CPWA Form-51)

Divisional Officer has to submit Reconciliation Statement in Form 51 indicating the differences between the cheques issued and remittances made by the Division on one hand and cheques encashed and remittances accounted for by the bank. The Divisional Officer should also prepare and furnish list of cheques issued but not cashed and remittances made but not accounted for during the month as well as cheques issued and remittances made during the previous months accounted for in the bank scroll during the month on hand along with the Monthly Account. However, none of the divisions are submitting Reconciliation Statements in Form - 51 during the period under report.

The Departmental Heads should issue instructions to all the concerned Divisions having cheque-drawing authority to prepare Form 51 - Schedule of Reconciliation of Cheques and Remittances (Format-**Annexure E**) along with Monthly Accounts.

5. Position of Reconciliation:

This office had issued the Tentative Calendar for reconciliation of Departmental figures with the Principal Accountant General (A&E) figures on a quarterly basis. Necessary instructions may be issued to the Chief Controlling Officer to ensure quarterly reconciliation of expenditure booked by this office and to send reconciliation certificates promptly so that differences, if any, noticed by the Department could be rectified before the completion of the financial year. Statements showing the position of reconciliation for the year 2020-21 are as follows:-

Reconciliation status of Expenditure and Receipt (Department wise):

Department	Expenditure	Receipt
	(in percentage)	(in percentage)
PWD	100	100
PHED	100	100
WRD	60.41	94.62
MID	100	100
Total Percentage	90.10	98.66

6. Irregularities in the preparation of Monthly Accounts.

The Monthly Account should be prepared in Form 80 for presentation (with all supporting registers, schedules, vouchers, etc.) to the Divisional Officer and submission to the Accountant General (A&E), Manipur. It should be supported with the following documents:-

- (a) Cash Balance Report in Form 5.
- (b) Schedule of Revenue realized in Form 46A.
- (c) Schedule of Works Expenditure in Form 64.
- (d) Classified Abstract of Expenditure in Form 74, etc.
- (e) Schedule Deposit of Works in Form 65.
- (f) Schedule of Deposits in Form 79.

It was observed that the documents mentioned above were not enclosed in most of the accounts submitted. The Divisions may be instructed to mandatorily ensure inclusion of the required forms in their Monthly Accounts.

Part – B (AUDIT)

Irregularities Noticed During Audit of Public Works Divisions

The result of audit for the year 2020-21 revealed that maintenance of initial records of accounts and functioning of the Divisions was not satisfactory and irregularities continued to persist despite having been pointed out in the Inspection Reports during the local Audit.

Statement 1

Important Irregularities noticed during local audit of PWD

Cases of defalcation and losses which are pending finalization as on 31.03.2021.

Sl. No.	Department	Year	Name of the office	Amount (in lakh)	Brief description of the cases	Present position
1	PWD	2010-11	EE, Building Division-II	292.00	Outstanding house rent	Pending settlement
2				0.68	Excess billing	-do-
3			EE, Building Division-III	42.19	Avoidable expenditure	-do-
4				EE, Sadar Hills	17.17	Avoidable expenditure
5	WRD & MID	2010-11	EE, FCD-II	10.72	Avoidable expenditure	-do-
6	PWD	2011-12	EE, Bishnupur	22.61	Undue benefit to contractor	-do-
7			EE, Bridge Division	97.29	Undue benefit to contractor	-do-
8			EE, Building Divn.-III	135.00	Undue benefit to contractor	-do-
9	WRD & MID	2011-12	EE, DBD-I	38.19	Avoidable expenditure	-do-
10			EE, FCD-IV	17.06	Avoidable expenditure	-do-
11	PHED	2011-12	EE, Ukhrul	25.62	Fraudulent payment on fictitious transportation	-do-
12				24.99	Undue benefit to contractor	-do-
13				18.25	Extra avoidable expenditure on purchase of pipes at	-do-
14	WRD & MID	2012-13	EE, DBD-I	5.18	Undue benefit to contractor	-do-
15	PWD	2013-14	EE, Imphal East	90.24	Undue benefit to contractor	-do-
16			EE, BD-I	173.00	Undue benefit to contractor	-do-
17				46.13	Non-deduction of Labour Cess	-do-
18			EE, Bridge Division	28.48	Undue benefit to contractor	-do-
19			EE, BD-II	14.42	Avoidable expenditure	-do-
20			EE, Bishnupur	61.19	Undue benefit to contractor	-do-

21			EE, Imphal West	14.48	Undue benefit to contractor	-do-		
22	WRD & MID	2013-14	EE, KSID	19.85	Undue benefit to contractor	-do-		
23			EE, TPD-II	205.59	Avoidable expenditure	-do-		
24	PHED	2013-14	EE, Senapati	98.45	Avoidable extra expenditure	-do-		
25	PWD	2014-15	EE, NEC-II	2.87	Less deduction of Labour Cess	-do-		
26			EE, Imphal East	13.48	Undue benefit to contractor	-do-		
27				31.46	Avoidable expenditure on purchase of bitumen	-do-		
28			EE, Sadar Hills	5.78	Short deduction of sales tax	-do-		
29			EE, Highway South	17.32	Avoidable expenditure on purchase of bitumen	-do-		
30				12.64	Short recovery of cost of bitumen	-do-		
31			EE, Chandel	8.57	Undue benefit to contractor due to double payment for surface preparation	-do-		
32			EE, NH-II	1.94	Non deduction of	-do-		
33			EE, Bridge Division	16.82	Undue benefit to contractor	-do-		
34				30.94	Short deduction of VAT/Sales tax and	-do-		
35			EE, Jiribam	5.27	Undue benefit to contractor due to short recovery of cost of bitumen	-do-		
36			EE, Senapati	21.26	Undue benefit to contractor due to short recovery of cost of bitumen	-do-		
37			PHED	2014-15	EE, Drainage & Sewerage	450.00	Avoidable expenditure	-do-
38					EE, Imphal West	257.74	Undue benefit to contractor	-do-
39	PWD	2015-16	EE, Mechanical-I	23.20	Loss of Road Roller	-do-		
40			EE, CCpur	2.08	Undue benefit to contractor	-do-		
41			EE, Bridge Division	34.21	Undue benefit to contractor	-do-		
42				13.30	Short deduction of Sales tax and Labour Cess	-do-		
43	PHED	2015-16	EE, Imphal West	9.68	Extra expenditure	-do-		
44			EE, WSMD-II	44.09	Avoidable expenditure	-do-		
45			EE, Water supply Division-VIII,	160.00	Suspected misappropriation	-do-		
46			EE, Thoubal	53.50	Suspected misappropriation	-do-		
47			EE, Drainage & Sewerage	661.00	Avoidable expenditure	-do-		
48	PWD	2016-17	EE, Highway South	21.68	Undue benefit to contractor	-do-		
49			EE, NEC-II	100.59	Wasteful expenditure	-do-		
50			EE, Ukhrul	84.12	Undue benefit to contractor	-do-		
51			EE, Mechanical-I	1468.00	Outstanding hiring charge of machineries	-do-		
52	WRD & MID	2016-17	EE, FCD-I	6.31	Avoidable expenditure	-do-		

53			EE, TPD-II	12.38	Avoidable expenditure	-do-
54	PHED	2016-17	EE, Chandel	12.83	Avoidable expenditure on water supply work	-do-
55	PWD	2017-18	EE, Jiribam	44.49	Avoidable expenditure	-do-
56			EE, MQCD	36.77	Undue benefit to contractor	-do-
57				29.30	Avoidable expenditure	-do-
58			EE, Mechanical-I	808.00	Non-return of machineries	-do-
59			EE, Chandel	6.57	Avoidable expenditure	-do-
60			EE, Tamenglong	66.74	Undue benefit to contractor	-do-
61			EE, NH-III	57.01	Undue benefit to contractor	-do-
62				44.63	Avoidable expenditure	-do-
63			EE, Highway South	33.69	Undue benefit to contractor	-do-
64			EE, Senapati	11.92	Undue benefit to contractor	-do-
65			EE, Building-III	29.63	Avoidable expenditure	-do-
66			EE, Sadar Hills	57.64	Avoidable expenditure	-do-
67			EE, NH-I	55.28	Avoidable expenditure	-do-
68			PWD	2018-19	EE, NH-II	11.23
69	WRD	2018-19	EE, KSID	18.38	Avoidable expenditure towards payment of surcharge on Electricity	-do-
70			EE, QCMD	4.00	Undue benefit to contractor due to non-consideration of nearest quarry	-do-
71			EE, DBD-II	34.25	Overpayment to contractor due to double payment for banking work of canal	-do-
72				163.00	Extra expenditure due to extension of items of work in excess of the approved	-do-
73				12.67	Unauthorized expenditure due to execution of item of work not included in the	-do-
74			EE, DBD-I	125.00	Short deduction of VAT & Labour Cess	-do-
75				234.00	Avoidable expenditure on transportation of cement &	-do-
76				278.00	Extra expenditure due to execution of items of work in excess of the approved quantities.	-do-
77				8.13	Wasteful expenditure	-do-
78			EE, IMD-II	459.00	Unproductive expenditure on day labourers drawn on Muster Rolls and work charged establishment	-do-
79				1.71	Avoidable expenditure on Electric consumption	-do-

80			EE, FCD-I	7.84	Extra expenditure due to incorrect adoption of rates	-do-
81			EE, TPD-II	55.07	Unproductive expenditure on day labourers drawn on Muster Rolls and work charged establishment	-do-
82			EE, FCD-II	27.66	Extra expenditure due to award of work at rate higher than the justified/reasonable	-do-
83				9.90	Undue benefit to contractor due to inclusion for carriage of cement	-do-
84			EE, FCD-III	15.57	Extra expenditure due to incorrect analysis of rates	-do-
85				19.75	Excess payment to contractor due to non-deduction of agency charges and consequently resulting in loss of Govt. Revenue	-do-
86				245.72	Non-clearance of contractors liabilities and diversion of NABARD loan towards VAT and Agency	-do-
87				113.00	Unproductive expenditure on day labourers drawn on Muster Rolls and work charged establishment	-do-
88				4792.00	Undue financial benefit to contractor due to irregular payment of cost escalation compiled with non-levy of liquidated damages for delay in completion of works	-do-
89			10.13	Undue benefits to contractors due to short recovery of cost of cement	-do-	
90			14.92	Extra expenditure due to execution of work in excess of the approved quantities	-do-	
91			72.46	Unproductive expenditure on wages of Muster Rolls and Pay and Allowances of	-do-	
92	PWD	2019-20	EE, EAP	578.00	Non-utilisation of excavated hard rock	-do-
93				159.39	Irregular payment of compensation of `64.61 lakh for forest trees and `94.78 lakh for agriculture crops	-do-

94				18.69	Undue benefit to contractor due to incorrect application	-do-
95			Chief Engineer	411.53	Irregular inclusion of	-do-
96			Addl. Chief Engineer-I	1.96	Adoption of longer lead resulting in inflation of TS amount	-do-
97			Addl. Chief Engineer-III	13.16	Inflated estimates due to incorrect analysis of rate	-do-
98			SE-III	13.32	Inflated Estimates due to incorrect analysis of rate	-do-
99			SE-II	19.76	Inflated estimates due to incorrect analysis of rates	-do-
100			EE, Noney	14.44	Non-recovery of amount of compensation for delay in completion of works	-do-
101			EE, Pherzawl	28.11	Non recovery of amount of compensation for delay in completion of work	-do-
102			EE, Imphal West	453.00	Undue financial benefit to contractors due to incorrect analysis of rates	-do-
103				19.51	Diversion of fund	-do-
104			EE, Bridge	57.92	Delay in completion of works and non-recovery of compensation for delay in completion	-do-
105			EE, Thoubal	31.35	Extra expenditure due to incorrect analysis	-do-
106				47.95	Unproductive expenditure on day labourers drawn on Muster Rolls	-do-
107			EE, MQCD	603.00	Non-completion of the work of setting up of IT-SEZ Building & non-recovery of compensation for delay	-do-
108			EE, Building Divn. No-I	60.81	Undue benefit to the Contractor due to less deduction of Sale Tax/VAT & Labour Cess	-do-
109			EE, Churachandpur	20.78	Avoidable expenditure due to non-adoption of nearest quarry	-do-
110			EE, NEC-II	127.10	Improvement of Bishnupur Nungba Road	-do-
111	PHED	2019-20	EE, WSMD-I	1408.00	Non-realisation of outstanding water charges	-do-

112			EE, Drainage & Sewerage Division	819.00	Delay in commissioning of sewerage project resulting in avoidable expenditure on consultancy charge	-do-
113			EE, Water Supply PCD	332.54	Non-realisation of water rent	-do-
114			EE, WSMD-II	281.00	Non-realisation of outstanding water charges	-do-
115			EE, Kakching	120.00	Non-functional schemes rendering the expenditure unfruitful	-do-
116	WRD	2020-21	EE, Electrical & Mechanical Division	98.80	Compensation for delay in completion of works	-do-
				9.82	Irregular execution of work resulting in undue benefit to the contractor	-do-
117	PWD	2020-21	EE, Electrical Division-II	20.75	Avoidable expenditure	-do-
118			EE, Building Division-II	577.00	Outstanding rent on Govt. Quarters	-do-
119				39.54	Short collection of Quarter rent from Central Government Employees	-do-

Statement 2

Statement of objections regarding Public Works Divisions upto 2020-21

Sl. No.	Department	Name of the Divisions	Objections	
			Items no.	Amount (in lakh)
2010-11				
1	PWD	EE, Ukhrul	4	44.68
2		EE, Building Division-I	3	137.60
3		EE, Bishnupur	5	189.74
4		EE, NH-I	3	63.06
5		EE, Thoubal	3	540.30
6		EE, Senapati	6	2419.19
7		EE, Building Division-II	8	563.48
8		EE, Building Division-III	4	54.22
9		EE, Sadar Hills	5	38.93
10	PHED	EE, Imphal East	3	122.45
11		EE, WSM-I	2	66.86
12		EE, Store Division	3	72.33
13		EE, Imphal West	4	353.31
14		EE, Bishnupur	2	1.64
15	WRD & MID	EE, DBD-I	2	272.01
16		EE, FCD-III	4	39.19
17		EE, FCD-I	5	288.08
18		EE, FCD-II	2	593.88
2011-12				
19	PWD	EE, Imphal East	5	4164.14
20		EE, Chandel	3	43.11
21		EE, NH-I	1	18.30
22		EE, Bishnupur	3	40.37
23		EE, Imphal West	3	38.11
24	PHED	EE, Drainage & Sewerage	3	104.47
25		EE, Ukhrul	5	178.58
26		EE, Churachandpur	1	21.41
27		EE, Chandel	4	468.01
28	WRD & MID	EE, TPD-I	4	2365.00
29		EE, KSI	1	69.55
30		EE, TPD-II	3	350.00
31		Assistant Engineer, Minor Irrigation	2	0
32		EE, DBD-I	2	74.02
2012-13				
33	PWD	EE, Bridge Division	3	317.31
34		EE, Building Division-II	1	1600.00
35		EE, Building Division-III	4	508.11
36		EE, Tamenglong	4	148.81
37		EE, CCpur	3	77.95
38	PHED	EE, Project Constn.	3	3.68

39		EE, Imphal West	1	304.64
40		EE, IPD	3	602.42
41		EE, Thoubal	5	0
42	WRD & MID	EE, MID-I	3	43.00
43		EE, Task Force, Thoubal Multi-purpose Project	1	0
44		EE, TPD-I	1	504.99
45		EE, TPD-II	1	80.87
46		EE, FCD-I	2	1791.08
47		EE, FCD-II	2	0
48		EE, DBD-I	2	74.02
49		EE, MID-IV	4	85.35
50		EE, DBD-II	3	6.19
51		EE, FCD-IV	3	129.10
52		EE, Khuga Headwork Divn.	6	332.01
53		EE, TPD-IV	4	131.67
54		EE, MID-II	6	4471.86
55		EE, MID-I	4	95.19
56		EE, FCD-III	7	485.76
57	EE, MID-III	12	210.94	
2013-14				
58	PWD	EE, Imphal East	4	174.09
59		EE, Building Division-I	4	602.13
60		EE, Mechanical-II	2	13.32
61		EE, Bridge Division	3	28.48
62		EE, Building Division-II	2	5.39
63		EE, Sadar Hills	3	42.43
64		EE, Thoubal	4	46.08
65		EE, Bishnupur	4	73.37
66		EE, Highway South	1	0
67		EE, Imphal West	3	16.29
68		EE, Bridge Division	9	420.86
69		EE, Electrical Division-III	11	371.62
70		EE, Road Task Force	2	5.72
71		EE, Electrical Division-II	10	3447.71
72		PHED	EE, Jiribam	4
73	EE, Imphal West		3	216.40
74	EE, Mechanical & Electrical		1	120.00
75	EE, Drainage & Sewerage		6	638.51
76	EE, WSSD		5	88.30
77	EE, WSMD-II		4	265.00
78	EE, Thoubal		6	0
79	EE, Imphal East		10	28.55
80	EE, PCD		10	156.05
81	EE, Chandel		10	52.04
82	EE, Senapati		8	359.96
83	EE, Ukhrul		10	183.57
84	EE, Bishnupur		4	16.78
85	WRD	EE, MID-IV	11	19632.81

86	&MID	EE, TPD-IV	1	0
87		EE, MID-I	8	1.78
88		EE, KSI	2	19.85
89		EE, FCD-III	11	4430.04
90		EE, Khuga Headwork Div	4	50.58
91		EE, DBD-II	2	20.11
2014-15				
92	PWD	EE, Building Division-I	8	0
93		EE, NEC-II	6	2.87
94		EE, NH-III	8	77.59
95		EE, Imphal West	5	35.59
96		EE, Ukhrul	4	395.70
97		EE, Imphal East	9	46.94
98		EE, Bishnupur	6	514.52
99		EE, Thoubal	1	0
100		EE, Sadar Hills	5	54.23
101		EE, Highway South	12	1938.94
102		EE, Tamenglong	5	0.81
103		EE, CCpur	5	88.65
104		EE, NH-I	6	554.39
105		EE, Chandel	10	42.89
106		EE, Building Division-I	2	0
107		EE, NH-II	10	170.23
108		EE, Bridge Division	8	195.55
109		EE, Jiribam	7	5.27
110		EE, Senapati	8	921.57
111		PHED	EE, WSMD-I	4
112	EE, D&SD		5	585.25
113	EE, WSMD-II		7	0.21
114	EE, Imphal West		5	342.41
115	EE, Tamenglong		8	7.80
116	EE, CCpur		6	20.93
117	EE, Imphal East		6	1.66
118	EE, WSMD-I		3	0
119	EE, Mechanical & Electrical		3	94.54
120	EE, Monitoring & Evaluation Division		4	27.65
121	WRD & MID	EE, MID-I	7	1477.52
122		EE, FCD-IV	6	244.96
123		EE, Khuga Canal Divn.-I	8	147.69
124		EE, TPD-II	6	248.36
125		EE, FCD-I	4	713.46
126		EE, FCD-IV	5	21.26
127		EE, Khuga Canal Divn.-I	9	119.97
128		EE, FCD-II	1	31.84
129		EE, TPD-I	15	1705.00
130		EE, QC&MD	3	74.90
131		EE, MID-II	4	13.27
132		EE, MID-IV	3	0

133		EE, Electrical & Mechanical Divn.	9	2292.00	
2015-16					
134	PWD	EE, Imphal West	3	491.93	
135		EE, NEC-II	7	38.12	
136		EE, Senapati	9	124.04	
137		EE, Bishnupur	3	33.28	
138		EE, Ukhrul	5	38.64	
139		EE, Thoubal	4	9.98	
140		EE, Mechanical-I	4	23.20	
141		EE, Building Divn.-I	1	0	
142		EE, Building Divn.-III	2	73.70	
143		EE, Highway Divn.-I	5	53.16	
144		EE, CCpur	5	20.35	
145		EE, Bridge	4	118.56	
146		PHED	EE, Investigation, Planning & Design	4	0
147			EE, Project Construction Divn.	7	195.23
148	EE, Imphal West		9	75.28	
149	EE, WSMD-II		5	281.04	
150	EE, WSD-VIII, Senapati		10	674.30	
151	EE, Bishnupur		2	0.95	
152	EE, Thoubal		7	381.39	
153	EE, D&SD		8	3578.92	
154	EE, WSMD-I		5	608.60	
155	EE, CCpur		9	56.22	
156	WRD & MID	EE, DBD-I	6	375.34	
157		Chief Engineer, IFCD	2	7.58	
158		Engineer Assistant, MI Circle	4	4.02	
159		EE, FCD-III	5	8.19	
160		EE, Khuga Canal Divn.-I	5	293.21	
161		EE, FCD-I	2	0	
162		EE, MID-I	3	74.76	
163		EE, MID-III	2	408.83	
164		EE, FCD-IV	4	57.86	
165		EE, TPD-I	6	83.51	
166		EE, TPD-II	5	455.74	
167		EE, Irrigation Maintenance-II	7	11.36	
2016-17					
168	PWD	EE, Highway Divn.-II	4	7024.85	
169		EE, Jiribam	4	15.15	
170		EE, M&QCD	3	4.86	
171		EE, Highway South	11	272.44	
172		EE, Thoubal	8	106.21	
173		EE, NEC-II	7	787.15	
174		EE, Ukhrul	10	93.77	
175		EE, Mechanical Divn.-I	5	1472.62	
176		EE, Bishnupur	8	9.74	
177		EE, IW	6	987.17	
178		EE, Building Divn.-III	7	177.63	
179		EE, Highway Divn.-I	4	0	

180		EE, Bridge Divn.-I	10	19874.70	
181	PHED	EE, Ukhrul	6	150.52	
182		EE, Mechanical & Electrical	4	46.21	
183		EE, Tamenglong	8	116.55	
184		EE, WSMD-II	9	81.65	
185		EE, Imphal East	10	170.39	
186		EE, Chandel	8	1046.00	
187		EE, PCD	6	559.52	
188		EE, Bishnupur	8	598.45	
189		EE, Investigation, Planning & Design	5	0	
190		EE, Senapati	5	59.78	
191		EE, Imphal West	8	5.56	
192		EE, Drainage & Sewerage	6	1161.95	
193		EE, CCpur	9	75.66	
194		EE, WSMD-I	9	824.56	
195		EE, WSD-II, Thoubal	4	101.00	
196		WRD & MID	EE, Irrigation Maintenance-II	7	11.36
197			SE, Flood Maintenance Circle	5	0
198			EE, MID-II	4	14.90
199			Chief Engineer, IFCD	4	0
200	EE, Khuga Canal Divn.-I		3	206.16	
201	EE, FCD-III		5	26.70	
202	EE, FCD-IV		4	0	
203	EE, MID-I		3	465.00	
204	EE, FCD-I		6	183.85	
205	EE, TPD-II		11	297.37	
2017-18					
206	PWD	Addl. Chief Engineer-III	4	1.40	
207		Addl. Chief Engineer-I	4	0	
208		Superintending Engineer-I	7	0	
209		Addl. Chief Engineer-II	2	0	
210		Chief Engineer (Building)	3	0	
211		Chief Engineer	6	5.78	
212		EE, Mechanical Divn.-II	4	0	
213		Superintending Engineer-II	4	0	
214		EE, Jiribam	9	99.77	
215		EE, IE	11	24.83	
216		EE, M&QCD	6	87.80	
217		EE, Mechanical Divn.-I	6	876.90	
218		EE, Chandel	9	12.88	
219		Superintending Engineer, Electrical	6	7.23	
220		EE, Store Divn.	6	38.63	
221		EE, Tamenglong	10	363.37	
222		Superintending Engineer, NH Circle	3	0	
223		EE, NH-III	8	232.67	
224		EE, Building-I	8	5385.05	
225		EE, Highway South	9	48.57	
226	EE, Building-II	10	482.29		

227		Superintending Engineer-III	6	0
228		EE, Senapati	7	91.24
229		EE, Electrical-III	6	5.78
230		EE, Electrical-I	7	0
231		EE, CCpur	7	46.68
232		EE, Electrical-II	5	0
233		EE, Building-III	8	367.89
234		EE, Ukhrul	9	35.19
235		EE, IW	5	66.39
236		EE, Bridge	8	61.59
237		EE, Thoubal	7	151.33
238		EE, NEC-II	5	92.75
239		EE, NH-III	9	174.74
240		EE, Sadar Hills	13	148.65
241		EE, Bishnupur	10	91.47
242		EE, NH-I	10	55.28
2018-19				
243	PWD	Addl. CE-III	4	1.40
244		Commissioner (Works)	2	0
245		Addl. CE-I	4	0
246		SE-I	7	0
247		Addl. CE-II	2	0
248		Chief Engineer (Building)	3	0
249		Chief Engineer	6	5.78
250		EE, Mechanical-II	4	0
251		SE-II	2	0
252		EE, Jiribam	7	5.49
253		EE, IE	8	7.95
254		EE, MQCD	3	6.87
255		EE, Mechanical-I	2	66.90
256		EE, Chandel	8	12.88
257		SE, Electrical	6	7.23
258		EE, Store	4	0
259		EE, Tamenglong	5	1.11
260		SE, National Highway Circle	2	0
261		EE, NH-III	5	50.66
262		EE, Building Divn-I	7	1082.05
263		EE, Highway South	7	14.88
264		EE, Building Divn.-II	8	5.59
265		SE-III	4	0
266		EE, Senapati	4	59.34
267		EE, Electrical-III	4	5.78
268		EE, Electrical-I	4	0
269		EE, CCpur	5	3.43
270		EE, Electrical-II	2	0
271		EE, Building Divn.-III	4	0
272		EE, Imphal West	2	0
273		EE, Bridge Divn.	6	0
274		EE, Thoubal	4	0

275		EE, NEC-II	5	92.73
276		EE, NH	6	1.40
277		EE, Sadar Hills	10	40.07
278		EE, Bishnupur	9	91.47
279		EE, NH-I	8	0
280	WRD & MID	Chief Engineer, WRD	4	0
281		SE, Thoubal Circle-I	1	6.69
282		SE, Khuga Project Circle	4	596.00
283		Addl. CE-I	3	0
284		SE, Irrigation Circle-I	1	0
285		EE, KSID	4	591.38
286		Addl. CE-II	1	0
287		EE, Project Store Divn.	3	641.00
288		SE, Irrigation Circle-II	3	0
289		EE, FCD-IV	7	0
290		EE, QC&MD	5	4.00
291		Chief Engineer, MID	3	0.87
292		EE, MID-II	6	0
293		EE, MID-IV	7	0
294		EE, MID-III	7	0
295		EE, DBD-II	6	321.72
296		EE, DBD-I	9	665.23
297		EE, Irrigation Maintenance Divn.-II	11	470.41
298		EE, FCD-I	6	39.13
299		EE, MI Divn.-I	1	0
300		EE, TPD-IV	13	281.92
301		EE, TPD-II	8	310.67
302		EE, FCD-II	4	37.56
303		EE, FCD-III	7	433.84
304		EE, TPD-I	6	4889.51
2019-20				
305	PWD	EE, NH-II	6	11.23
306		PD, EAP	6	162.17
307		Chief Engineer	4	411.53
308		Addl. Chief Engineer-I	2	1.96
309		Addl. Chief Engineer-II	1	0
310		Addl. Chief Engineer-III	3	13.16
311		EE TPL Divn.	3	14.64
312		SE NHC	1	0
313		SE-III	2	13.32
314		SE-II	3	19.76
315		EE, Noney	5	15.90
316		EE, Pherzawl	6	36.54
317		EE, Kakching	5	115.85
318		EE, Ukhrul	5	26.23
319		EE, Imphal West	9	44.24
320		EE, Bridge	8	743.85
321		EE Highway South	8	123.55
322		EE Thoubal	8	87.35
323		EE MQC	5	781.56
324		EE Building - I	2	0

325		EE Churachandpur	6	24.19
326		EE Kamjong	3	0
327		EE NEC-II	6	314.5
328		Superintending Engineer-I	5	1.69
329	PHED	SE, Urban Circle	2	0
330		Addl. CE	2	0
331		EE, WSMD-I	8	1481.14
332		SE, Rural Circle-I	1	0
333		EE, Drainage & Sewerage	9	1247.19
334		EE, Water Supply Project Construction	7	415.99
335		EE, WSD-II	8	433.00
336		EE, Thoubal	10	25.00
337		Chief Engineer	3	0
338		EE, Kakching	7	215.95
339		EE, Chandel	7	0
340		EE, Tengnoupal	7	124.41
341		EE, Store Divn.	4	241.70
2020-21				
342	PWD	EE, Electrical Division –III	8	46.37
343		EE, Electrical Division –II	10	35.35
344		SE, National Highway Circle	1	0
345		EE, Sadar Hills	7	27.97
346		EE, Senapati	8	17.06
347		Superintending Engineer, Electrical	4	1.06
348		Project Director, Externally Aided	5	868
349		EE, Electrical Division –I	7	13.32
350		EE, Building Division – II	6	616.54
351		Executive Engineer, BD-II	5	0
352		WRD	SE- Irrigation Circle-I	2
353	CE-WRD		4	0
354	EE-FCD-I		6	0
355	EE-Irrigation Investigation Divn.		11	39.34
356	SE-Flood Management Circle		3	0
357	SE-Khuga Project Circle		2	0
358	EE-TPD-IV		7	16.7
359	EE-Task Force Divn.		9	211.28
360	EE-Khuga Canal Divn.-I		5	83.38
361	EE-Electrical & Mechanical Divn.		11	1139.10

Statement-3

List of Divisions from which even first reply is due on the Inspection Reports issued upto 31.03.2021

Sl. No.	Department	Name of the Divisions	Reference to IR	Paras	
2010-11					
1	PWD	EE, Bridge Division	OA-II/IR/1-40(W)/EE-BD/PWD/2010-11	9	
2	WRD	EE, FCD-III	OA-II/IR/6-5(W)/EE-FCD-III/IFCD/10-11	4	
3		EE, FCD-I	OA-II/IR/5-8(W)/EE-FCD-I/2010-11	4	
2011-12					
4	WRD & MID	EE, FCD-IV	OA-II/IR/2-34(W)/EE-FCD-IV/IFCD/11-12	3	
5		EE, Khuga Headwork	OA-II/IR/5-23(W)/EE-KHD/2010-11	6	
6		EE, MID-II	OA-II/IR/5-20(W)/EE-MID-II/11-12	6	
7		EE, MID-I	OA-II/IR/5-20(W)/EE-MID-I/2012-13	4	
2012-13					
8	PWD	EE, Building Divn.-III	OA-II/IR/1-26(W)/BD-III/PWD/12-13	4	
9		EE, Road Task Force	OA-II/IR/1-76(W)/EE-RTF/DIV-I/2012-13	2	
10	WRD & MID	EE, FCD-III	OA-II/IR/2-64(W)/EE-FCD-III/2012-13	7	
11		EE, MID-III	OA-II/IR/2-269(W)/EE-MID-III/10-11	12	
2013-14					
12	PWD	EE, Imphal East	OA-II/IR/1-44(W)/EE-IED/PWD/2012-13	4	
13		EE, ED-III	OA-II/IR/1-68(W)/ED-III/Khoyathong/2013-	11	
14		EE, ED-II	OA-II/IR/1-67(W)/ED-II/Khoyathong/2013-	10	
15	WRD & MID	EE, MID-III	OA-II/IR/2-69(W)/EE-MID-III/13-14	11	
16		EE, MID-I	OA-II/IR/2-55(W)/EE-MID-I/IFCD/2009-10	8	
17		EE, FCD-III	OA-II/2-77(W)/EE-FCD-III/13-14	11	
18		EE, Khuga Headwork	OA-II/IR/2-81(W)/EE-KHD/CCPUR/13-14	4	
2014-15					
19	PWD	EE, Building Divn.-II	OA-II/IR/1-95(W)/BD-II/Khoyathong/13-14	8	
20		EE, NEC-II	OA-II/IR/1-102(W)/EE-NEC-II/14-15	6	
21		EE, Sadar Hills	OA-II/IR/1-109(W)/EE Sadar hills/PWD/14-	5	
22		EE, Highway South	OA-II/IR/1-120(W)/EE/HWS/PWD/14-15	12	
23		EE, Tamenglong	OA-II/IR/1-124(W)/EE-PWD/TML/14-15	5	
24		EE, Highway Divn.-I	OA-II/IR/1-119(W)/EE-NH-I/PWD/14-15	7	
25		EE, Chandel	PAG(Au)/LAG-I/1/EE/CDL/PWD/14-15	10	
26		EE, Highway Divn-II	PAG(Au)/LAG-I/1/EE-NH-II/PWD/14-15	10	
27		EE, Bridge Division	PAG(Au)/LAG-I/1/EE-BD/PWD/14-15	10	
28		WRD & MID	EE, MID-I		7
29			EE, FCD-IV	OA-II/IR/3-99(W)/EE-FCD-IV/BPR/2013-	5
30			EE, Khuga Canal-I	OA-II/IR/2-92(W)/EE-KCD-I/CCPUR/13-14	8
31			EE, TPD-II		6
32	EE, TPD-I		OA-II/IR/3-103(W)/EE-TPD-	15	
33	EE, MID-II		OA-II/IR/3-112(W)/EE-MI-II/2014-15	4	
34	EE, MID-IV		OA-II/IR/3-123(W)/EE-MID-IV/14-15	3	

35		EE, Electrical & Mechanical Divn.	OA-II/IR/3-122(W)/EE-M&ED/IFCD/14-15	9
2015-16				
36	WRD & MID	EE, DBD-I	PAG(Au)/LAG-I/5/EE-DBD-I/IFCD/2013-	6
37		Chief Engineer, IFCD	PAG(Au)/LAG-I/5-14/CE-IFCD/2015-16	2
38		Engineer Assistant, MI Circle	PAG(Au)/LAG-I/5-19/EA-MIC/IFCD/15-16	4
39		EE, FCD-III	PAG(Au)/LAG-I/5-20/EE-FCD-III/TBL/IFCD/15-16	5
40		EE, Khuga Canal-I	PAG(Au)/LAG-I/5-15/EE-KCD-I/15-16	5
41		EE, FCD-I	PAG(Au)/LAG-I/5-38/EE-FCD-I/2015-16	2
42		EE, MID-I	PAG(Au)/LAG-I/5-37/EE-MID-I/2015-16	4
43		EE, MID-III	PAG(Au)/LAG-I/5-49/EE-MID-III/2015-16	2
44		EE, FCD-IV	PAG(Au)/LAG-I/5-47/EE-FCD-IV/BPR/15-	4
45		EE, TPD-I	PAG(Au)/LAG-I/5-53/EE-TPD-I/2014-15	6
46		EE, TPD-II	PAG(Au)/LAG-I/5-54/EE-TPD-II/2014-15	4
47		EE, Irrigation Maintenance-II	PAG(Au)/LAG-VI/2-1/IR/EE-IMD-II/2015-16	7
2016-17				
48	PWD	EE, Ukhru	LAG-V/IR/2-13/EE-Ukl DIV/PWD/2016-17	10
49		EE, Mechanical-I	LAG-V/IR/2-14/EE-MDI/PWD/2016-17	5
50		EE, Building-III	LAG-V/IR/2-15/EE-BD-III/PWD/2016-17	7
51		EE, Bridge Divn.		10
52	WRD & MID	EE, Irrigation Maintenance-II	PAG(Au)/LAG-VI/2-1/IR/EE-IMD-II/2015-16	7
53		EE, MID-III	AG(Au)/LAG-VI/1-20/MID-III/2016-17	4
54		Chief Engineer, IFCD	PAG(Au)/AMG-II/LAG-VI/IR/CE-IFCD/1-7/2016-17	4
55		EE, Khuga Canal Divn.-I	AG(Au)/ES/1-26/EE-KCD-I/CCPUR/2016-17	3
56		EE, FCD-III	AG(Au)/ES/1-29/EE-IFCD(TBL)2016-17	5
57		EE, FCD-IV	AG(Au)/ES/1-39/EE-FCD-IV/BPR/2016-17	4
58		EE, MID-I	PAG(Au)/AMG-II/LAG-VI/EE-MID-I/2016-	3
59		EE, FCD-I	AG(Au)/ES/1-32/EE-FCD-I/IFCD/2016-17	6
60		EE, TPD-II	AG(Au)/ES/1-33/EE-TPD-I/IFCD/2016-17	11
2017-18				
61	PWD	Addl. CE-III	AG(Au)/ES/3-51/ACE-III/PWD/2017-18	4
62		Addl. CE-I	AG(Au)/ES/3-50/ACE-I/PWD/2017-18	4
63		SE-I	AG(Au)/ES/3-55/SE-I/PWD/2017-18	7
64		Addl. CE-II	AG(Au)/ES/3-43/ACE-II/2016-17	2
65		Chief Engineer, Building	AG(Au)/ES/3-53/CE-BD/PWD/2017-18	3
66		EE, Mechanical-II	AG(Au)/ES/3-68/EE-MID-II/2017-18	4
67		SE-II	AG(Au)/ES/3-57/PWD/2017-18	4
68		EE, Jiribam	AG(Au)/ES/3-70/EE-Jiri/PWD/2017-18	9
69		EE, M&QCD	AG(Au)/ES/3-69/EE-MQCD/PWD/2017-18	6
70		EE, MD-I	AG(Au)/ES/3-70/EE-MD-I/2017-18	6
71		EE, Chandel	AG(Au)/ES/3-76/EE-CDL/PWD/2017-18	9
72		SE, Electrical	AG(Au)/ES/3-59/SE(Electrical)/pwd/2017-	6

73		EE, Store	AG(Au)/ES/3-68/EE/Store/PWD/2017-18	6
74		EE, Tamenglong	AG(Au)/ES/3-72/EE-TML/PWD/2017-18	10
75		SE, National Highway Circle	AG(Au)/ES/3-80/SE-NHC/PWD/2017-18	3
76		EE, NH-III	AG(Au)/ES/3-89/EE-NH-III/PWD/2017-18	8
77		EE, Building-I	AG(Au)/ES/3-90/EE/BD-I/PWD/2017-18	8
78		EE, Highway South	AG(Au)/ES/3-77/EE-HSD/PWD/2017-18	9
79		EE, Building-II	AG(Au)/ES/3-91/EE-BD-II/PWD/2017-18	10
80		SE-III	AG(Au)/ES/3-58/SE-III/PWD/2017-18	6
81		EE, Senapati	AG(Au)/ES/3-76/EE-SPT/PWD/2017-18	7
82		EE, Electrical-III	AG(Au)/ES/3-94/EE/ED-I/PWD/2017-18	6
83		EE, Electrical-I	AG(Au)/ES/3-93/EE/ED-I/PWD/2017-18	7
84		EE, Building-III	AG(Au)/ES/3-106/EE-BD-III/PWD/2017-18	8
85		EE, Imphal West	AG(Au)/ES/EE-IW/PWD/2017-18	5
86		EE, Bridge Divn.	AG(Au)/ES/3-92/EE-BD/2017-18	8
87		EE, NEC-II	AG(Au)/ES/3-113/EE-NEC-II/PWD/2017-	5
88		EE, NH-III	AG(Au)/ES/3-111/EE-NH-III/PWD/2017-18	9
89		EE, Sadar Hills	AG(Au)/ES/3-115/EE-Sadar	13
90		EE, Bishnupur	AG(Au)/ES/3-114/EE-BPR/PWD/2017-18	10
91		EE, NH-I		10
2018-19				
92	PWD	EE, NH-II	PAG(Au)/ES/3-44/EE, NH Div-	6
93		PD, EAP	PAG(Au)/ES/3-65/PD-EAP/PWD/2018-19	11
94		Chief Engineer	PAG(Au)/ES/3-61/CE/PWD/2019-20	5
95		Addl. CE-I	PAG(Au)/ES/3-62/Addl.CE-I/2019-20	2
96		Addl. CE-II	PAG(Au)/ES/3-62/Addl.CE-II/2019-20	3
97	WRD & MID	Chief Engineer	PAG(Au)/ES/1-33/CE/WRD/2018-19	4
98		SE FMC	PAG(Au)/ES/1-35/SE/FMC/2018-19	3
99		SE Thoubal Circle-I	PAG(Au)/ES/1-32/SE/TBL-I/2018-19	1
100		SE Khuga Project	PAG(Au)/ES/1-34/SE-KPC/WRD/2018-19	3
101		Addl. CE-I	PAG(Au)/ES/1-38/Addl. CE-I/WRD/2018-	3
102		EE Khuga Spillway & Intake Divn.	PAG(Au)/ES/1-39/EE-Khuga SQ.1 Div/2018-19	3
103		Addl. CE-II	PAG(Au)/ES/1-40/Addl.CE-II/WRD/2018-	1
104		EE FCD-IV	PAG(Au)/ES/1-44/EE FC Div-IV/BPR-WRD/2018-19	7
105		EE MQCD	PAG(Au)/ES/1-42/EE-QCMD/WRD/2018-	5
106		CE MID	PAG(Au)/ES/1-50/CE-MID/2018-19	3
107		EE MID-II	PAG(Au)/ES/1-51/EE/MID-II/2018-19	6
108		EE MID-III	PAG(Au)/ES/1-53/EE-MID-III/2018-19	7
109		EE DBD-I	PAG(Au)/ES/1-56/EE-DB-Div-	9
110		EE Irrigation Maintenance Divn.-II	PAG(Au)/ES/1-55/EE-IM-Div-II/WRD/2018-19	11
111		EE FCD-I	PAG(Au)/ES/1-60/EE-FCD-I/WRD/2018-19	6
112		EE, TPD-IV	PAG(Au)/ES/1-59/EE-TPD-IV/WRD/2018-	13
113		EE, FCD-II	PAG(Au)/ES/1-63/EE-FCD-II/2018-19	4
114		EE, FCD-III	PAG(Au)/ES/1-79/EE. FC & D. Divn-III/2018-19	5
2019-20				
115	PWD	Addl CE-II	No.PAG(Au)/ES/3-70/AddlCE-II/PWD/2019-20	1

116		EE, TPL Divn.	No.PAG(Au)/ES/3-85/EE.TPL-Div-PWD/PWD/2019-20	3
117		SE-II	No. PAG(Au)/ES/3-81/SE-II/PWD/2019-20	3
118		EE, Noney	No. PAG(Au)/ES/2-104/EE-NoneyDiv.PWD/2019-20	
119		EE, Pherzawl	No.PAG(Au)/ES/3-107/EE-Pherzawl Div.PWD/2019-20	6
120		EE, Kakching		5
121		EE, Imphal West	No. PAG(Au)/ES/3-114/EE-IW,PWD/2019-20	10
122		EE, Highway South	No.PAG(Au)/ES/3-141/EE Hy.S.Div.PWD/2019-20	8
123		EE, CCpur	No. PAG(Au)/ES/3-81/SE-II/PWD/2019-20	6
124		EE, NEC-II	No. PAG(Au)/ES/3-113/EE-NEC-	6
125	PHED	EE, WSMD-II	No.PAG(AU)/ES/2-76/EE.WSMDivn-I/PHED/2019-20	8
126		EE, Tengnoupal	No.PAG(AU)/ES/2-111/EE.WSMDivn-	7
127		EE, Store Divn.	No.PAG(AU)/ES/2-125/EE.WSMDivn-	4
128		EE, WSMD-I	No.PAG(AU)/ES/2-72/EE.WSMDivn-	8
129		EE, Chandel	No.PAG(AU)/ES/2-105/EE.WSMDivn-	7
130		EE, Drainage & Sewerage Divn.	No.PAG(AU)/ES/2-75/EE.WSMDivn-I/PHED/2019-20	9
2020-21				
131	PWD	EE, Elect-III	No. No.PAG(Au)/ ES/3-152/EE,ElecDiv-III/2020-21/	8
132		EE, Elect-II	No. PAG(AU)/ES/3-150/PWD-EleDiv-II/2019-20/	10
133		SE National Highway Circle	PAG(Au)/ES/3-201/SE,NHC,PWD/2020-21	1
134		EE, Sadar Hills Divn.	PAG(Au)/ES/3-180/EE,SHD-PWD/2020-21	7
135		EE, Senapati Divn.	PAG(AU)/ES/3-200/EE,SPT DIVISION,PWD/2020-21	8
136		SE, Electrical Circle	PAG(Au)/ES/3-193/SE,ElectricalCircle,PWD/2020-21	4
137		Project Director, Externally Aided	PAG(Au)/ES/3-161/PD,EAP/PWD/2020-21	5
138		Executive Engineer, Electrical Division -I	PAG(Au)/ES/3-164/EE,ElecDiv-I/PWD/2020-21	7
139		Executive Engineer, Building Division-II	PAG(Au)/ES/3-158/EE,Bul-Div-II,PWD/2020-21	6
140		Executive Engineer, Building Division-III	PAG(Au)/ES/3-195/EE,BD-III	5
141	WRD	SE- Irrigation Circle-I	PAG(Au)/ES/1-55/SE. IC-I/WRD/2020-21	2
142		C.E.-WRD	PAG(Au)/ES/1-154/CE. WRD/2020-21	4
143		EE-IID-WRD	PAG(Au)/ES/1-153/EE.-IRRI. INV. DIVWRD/ 2020-21	11
144		EE-TPD-IV	PAG(Au)/ES/1-166/EE,TPD-IV/WRD/2020-21	7
145		EE-Task Force Divn.	PAG(Au)/ES/1-166/EE. TPD-IV/WRD/2020-21	10

Statement 4

Details of Inspection Reports outstanding as on 31.3.2021 (Public Works Divisions)

Year	Department	No. of Inspection Reports	No. of paras
2010-11	PWD	9	36
	WRD	4	11
	PHED	4	11
2011-12	PWD	5	16
	WRD	5	11
	PHED	4	13
2012-13	PWD	5	22
	WRD	4	12
	PHED	4	13
2013-14	PWD	14	74
	WRD	21	97
	PHED	12	79
2014-15	PWD	19	128
	WRD	15	91
	PHED	11	76
2015-16	PWD	13	57
	WRD	10	39
	PHED	7	40
2016-17	PWD	14	92
	WRD	9	42
	PHED	18	139
2017-18	PWD	38	258
	WRD	0	0
	PHED	0	0
2018-19	PWD	1	6
	WRD	25	132
	PHED	0	0
2019-20	PWD	23	116
	WRD	0	0
	PHED	13	78
2020-21	PWD	10	65
	WRD	9	50
	PHED	0	0
Total		326	1804

Annexure – A

Delay in submission of Monthly Accounts for the year 2020-21 in respect of PWD (in days)

Sl. No.	Name of the Divisions	Apr-20	May-20	Jun-20	Jul-20	Aug-20	Sep-20	Oct-20	Nov-20	Dec-20	Jan-21	Feb-21	Mar-21	Average Delay
1	E.E., Senapati Division	30	7	3	78	47	17	0	28	38	7	29	65	29.08
2	E.E., Tamenglong Division	52	21	13	23	12	2	0	5	5	2	7	19	13.42
3	E.E., Ukhrul Division	30	7	10	49	18	25	3	11	23	2	7	58	20.25
4	E.E., Chandel Division	64	33	10	63	32	2	0	20	5	29	26	65	29.08
5	E.E., Churachandpur Division	64	33	3	43	12	2	9	20	29	33	12	52	26.00
6	E.E., Bishnupur Division	38	7	3	71	40	30	0	5	71	23	1	12	25.08
7	E.E., Thoubal Division	64	84	54	49	18	17	3	28	23	23	12	19	32.83
8	E.E., Jiribam Division	30	7	3	43	12	10	0	5	5	0	1	11	10.58
9	E.E., Imphal East Division	74	43	13	41	0	34	27	32	18	7	7	58	29.50
10	E.E., Imphal West Division	30	7	3	23	0	2	0	5	5	0	1	11	7.25
11	E.E., Building Division-I	47	16	3	23	0	17	3	11	5	2	7	54	15.67
12	E.E., Building Division-II	52	21	3	23	12	10	3	26	12	20	29	11	18.50
13	E.E., Building Division-III	30	7	13	23	12	10	3	26	12	20	29	11	16.33
14	E.E., National Highway Div-I	30	7	3	23	0	2	0	11	5	0	1	12	7.83
15	E.E., National Highway Div-II	30	7	3	30	0	2	9	5	12	2	7	12	9.92
16	E.E., National Highway Div-III	30	14	10	30	12	2	0	11	26	0	1	12	12.33
17	E.E., Electrical Division-I	38	7	10	30	0	17	0	5	18	2	1	12	11.67
18	E.E., Electrical Div-II	64	43	3	30	0	10	3	11	12	7	7	12	16.83
19	E.E., Electrical Div-III	30	7	10	30	0	10	0	5	5	0	26	16	11.58
20	E.E., Mechanical Div-I	30	21	10	30	0	10	0	5	5	20	1	6	11.50
21	E.E., Mechanical Div-II	30	7	3	43	12	2	0	5	12	2	1	0	9.75

Sl. No.	Name of the Divisions	Apr-20	May-20	Jun-20	Jul-20	Aug-20	Sep-20	Oct-20	Nov-20	Dec-20	Jan-21	Feb-21	Mar-21	Average Delay
22	E.E.,Sadar Hills Division	74	43	13	30	0	17	0	26	23	7	7	58	24.83
23	E.E., Bridge Division	30	21	3	49	18	30	3	11	18	7	7	16	17.75
24	E.E., Store Division	30	7	10	23	0	10	0	18	5	0	1	0	8.66
25	E.E., Highway South Division	45	14	10	30	0	10	0	18	12	0	1	0	11.66
26	E.E., Monitoring & Quality Control Division	52	21	3	23	0	2	0	5	5	2	7	6	10.5
27	E.E., North Eastern Council Division-II	45	14	61	43	55	25	0	26	5	20	29	58	31.75
28	Project Director (EAP)	45	14	13	43	12	10	9	5	5	2	1	11	14.16
29	E.E.,Kamjong Division	38	7	3	23	12	2	0	5	5	0	1	16	9.33
30	E.E.,Pherzawl Division	30	7	3	23	12	2	0	5	5	2	7	16	9.33
31	E.E., Tengenoupal Division	30	7	3	43	12	10	0	5	5	29	1	16	13.41
32	E.E.,Kakching Division	64	84	54	30	55	40	9	32	12	7	12	19	34.83
33	E.E.,Noney Division	38	7	61	30	0	25	0	18	12	7	12	16	18.83
	No. of Accounts received in time	0	0	0	0	14	0	12	0	0	9	0	3	38
	No. of Accounts delayed	33	33	33	33	19	33	21	33	33	24	33	30	358

Annexure – B

Delay in submission of Monthly Accounts for the year 2020-21 in respect of PHED (in days)

Sl. No.	Name of the Divisions	Apr-20	May-20	Jun-20	Jul-20	Aug-20	Sep-20	Oct-20	Nov-20	Dec-20	Jan-21	Feb-21	Mar-21	Average Delay
1	E.E.,Thoubal Division	30	5	10	27	55	30	4	19	31	7	36	20	22.83
2	E.E.,Bishnupur Division	41	5	10	2	34	9	2	19	30	7	25	17	16.75
3	E.E., Churachandpur Division	37	6	51	22	56	30	21	2	29	14	36	46	29.17
4	E.E.,Ukhrul Division	37	6	45	14	28	30	21	4	41	1	20	18	22.08
5	E.E.,Tamenglong Division	18	8	7	9	28	6	22	12	29	12	32	18	16.75
6	E.E.,Senapati Division	60	29	42	43	55	39	44	21	32	16	32	47	38.33
7	E.E., Chandel Division	19	6	52	21	9	31	9	12	18	8	2	14	16.75
8	E.E., Imphal East Division	21	6	52	11	34	10	2	35	35	14	39	47	25.05
9	E.E., Imphal West Division	37	6	17	6	46	22	8	17	23	33	30	18	21.91
10	E.E., W/S Maintenance Division I	17	59	17	36	12	2	8	17	18	11	13	16	18.83
11	E.E., W/S Project Construction Div.	10	59	17	7	11	10	8	17	11	6	13	10	14.91
12	E.E.,Inves. Plg. & Design Div.	10	7	3	38	7	6	8	17	10	6	8	16	11.33
13	E.E., Mechanical and Electrical Div.	24	16	3	35	12	2	1	17	10	1	8	11	11.66
14	E.E., W/S Store Division	24	16	5	18	7	3	1	17	02	1	8	11	9.42
15	E.E., W/S Drainage &Sewerage Div.	24	16	5	11	4	6	1	17	02	1	1	11	8.25
16	E.E., W/S Maintenance Division II	23	21	17	49	28	25	1	24	28	22	29	34	25.08
17	E.E., Monitoring and Evaluation Div.	12	21	17	30	5	10	20	24	28	1	29	11	17.33
18	E.E.,Kangpokpi Division	8	27	17	15	32	26	13	4	32	12	21	24	19.25

Sl. No.	Name of the Divisions	Apr-20	May-20	Jun-20	Jul-20	Aug-20	Sep-20	Oct-20	Nov-20	Dec-20	Jan-21	Feb-21	Mar-21	Average Delay
19	E.E.,Jiribam Division	50	14	5	31	63	33	23	4	5	12	35	18	24.42
20	E.E., Tengnoupal Division	57	26	5	13	39	24	14	4	23	13	26	16	21.67
21	E.E.,Pherzawl Division	57	26	42	14	29	24	14	4	11	1	20	18	21.67
22	E.E.,Kakching Division	23	26	4	14	28	18	16	4	31	12	35	19	19.17
23	E.E., Kamjong Division	9	5	4	15	34	16	16	4	32	12	32	24	16.92
24	E.E.,Noney Division	33	5	35	4	42	17	9	4	32	23	13	18	19.58
25	E.E., Communication &Capacity Development Unit	16	5	5	31	31	4	7	8	29	22	21	47	18.83
	No. of Accounts received in time	0	0	0	0	0	0	0	0	0	0	0	0	0
	No. of Accounts delayed	25	25	25	25	25	25	25	25	25	25	25	25	300

Annexure – C

Delay in submission of Monthly Accounts for the year 2020-21 in respect of WRD (in days)

Sl. No.	Name of the Divisions	Apr-20	May-20	Jun-20	Jul-20	Aug-20	Sep-20	Oct-20	Nov-20	Dec-20	Jan-21	Feb-21	Mar-21	Average Delay
1	E.E.,DolaithabiBarrage Construction-I	28	21	11	0	2	16	2	0	8	0	6	0	7.83
2	E.E.,DolaithabiBarrage Construction-II	0	14	2	0	1	18	2	0	0	0	6	0	3.58
3	E.E.,Thoubal Project Division-I	22	21	32	24	5	1	3	90	80	70	60	30	36.50
4	E.E.,Thoubal Project Division-II	56	46	36	26	7	2	4	92	82	72	62	32	43.08
5	E.E.,Thoubal Project Division-IV	142	132	122	112	32	7	31	4	86	76	66	46	71.33
6	E.E., Task Force Division	22	21	20	16	14	22	6	9	62	52	42	32	26.50
7	E.E.,Thoubal Project Division-VI	23	24	25	6	12	23	2	4	62	52	42	32	25.58
8	E.E., Project Store Division	41	131	121	111	101	50	1	81	71	61	51	31	70.92
9	E.E., Electrical & Mechanical Division	141	24	26	3	0	8	15	33	23	13	30	30	28.83
10	E.E., Flood Control and Drainage Div-I	21	26	33	4	17	19	21	20	9	32	12	16	19.17
11	E.E., Flood Control and Drainage Div-II	24	15	17	9	0	14	3	5	4	16	10	13	10.83
12	E.E., Flood Control and Drainage Div-III	21	19	21	0	13	23	14	2	17	7	10	11	13.17
13	E.E., Flood Control and Drainage Div-IV	26	6	13	21	3	0	15	12	2	0	6	10	9.50
14	E.E.,Khuga Head Works	8	7	23	30	4	5	0	13	2	2	7	5	8.83
15	E.E.,Khuga Canal Division-I	26	21	26	27	0	14	6	34	24	14	16	16	18.67
16	E.E.,Khuga Canal Division-II	52	19	0	21	17	6	9	8	0	0	2	14	12.33
17	E.E., Khuga Spillway and Intake Division	8	21	6	18	2	4	7	49	39	7	12	16	15.75
18	E.E., Quality Control and Monitoring Div	8	4	0	6	16	21	4	4	2	0	6	15	7.17
19	E.E., Irrigation Investigation Division	63	53	31	23	17	16	14	13	12	0	6	13	21.75
20	E.E., Irrigation Maintenance Division-II	32	31	25	16	23	11	16	24	32	36	26	19	24.25
	No. of Accounts received in time	1	0	2	3	3	1	1	2	2	6	0	2	23
	No. of Accounts delayed	19	20	18	17	17	19	19	18	18	14	20	18	217

Annexure – D

Delay in submission of Monthly Accounts for the year 2020-21 in respect of MID (in days)

Sl. No.	Name of the Divisions	Apr-20	May-20	Jun-20	Jul-20	Aug-20	Sep-20	Oct-20	Nov-20	Dec-20	Jan-21	Feb-21	Mar-21	Average Delay
1	E.E., Minor Irrigation Division -I	42	12	13	10	11	6	0	5	0	1	1	5	8.83
2	E.E., Minor Irrigation Division -II	42	15	11	15	11	6	2	11	25	16	1	6	13.42
3	E.E., Minor Irrigation Division -III	42	12	3	10	11	6	0	5	25	0	1	5	10.00
4	E.E., Minor Irrigation Division -IV	42	12	3	10	11	6	0	5	12	12	9	5	10.58
5	E.E., Engineering Assistant Division	42	12	3	10	11	6	0	5	0	1	1	5	8.00
	No. of Accounts received in time	0	0	0	0	0	0	4	0	2	1	0	0	7
	No. of Accounts delayed	5	5	5	5	5	5	1	5	3	4	5	5	53

Annexure E

FORM 51	
SCHEDULE OF MONTHLY RECONCILIATION WITHBRANCH OFBANK FOR THE MONTH	
Part – I Cash Remitted and acknowledged	
	Bank (Rs.)
1. Opening balance brought over as per line 5 of last month's memo	
2. Cash etc. remitted during the month	
3. TOTAL	
4. Amounts acknowledged by Bank as per monthly statement (Receipt Scrolls)	
5. Difference (line 3 minus 4) as explained below. Closing Balance	

PART – II – Cheques Issued And Paid	
	Bank (Rs.)
1. Opening balance brought over as per line 5 of previous month's memo	
2. Cheques issued during the month	
3. TOTAL	
4. Cheques cashed as per bank's Payment Scroll.	
5. Difference (line 3 minus 4) as detailed below Closing Balance	

Analysis of the closing balance as per line 5 Details of Closing Balance (Part – I)				
	Date on which remitted to bank	No. and date of challan	Amount Rs.	Reasons for the outstanding balance

Details of Closing Balance (Part – II)								
PARTICULARS OF CHEQUES		Amount	PARTICULARS OF CHEQUES		Amount	PARTICULARS OF CHEQUES		Amount
Uncashed	Cheque	Total Uncashed Cheque						
		<i>Deduct—</i> Total of cashed Cheques as per last column						
		Net difference						