



# Annual Review Report

on

## Working of Public Works Divisions

(Public Works,  
Public Health Engineering,  
Water Resources, and  
Minor Irrigation Departments)

## Manipur State

2019-20



**Principal Accountant General (A&E)**  
**Manipur, Imphal**

## **PREFACE**

The Annual Review on working of the Public Works Divisions is prepared as per instruction contained in Para 8.54 of C.A.G M.S.O (A&E) irregularities / deficiencies noticed in maintenance and submission of accounts and in the functioning of the Public Works, Public Health Engineering, Water Resources and Minor Irrigation Divisions in the State of Manipur.

The review includes audit observations noticed during local audit. There is a scope for improvement in the upkeep, maintenance, and submission of accounts by the State PW Divisions. The State Government need to take urgent steps to remove the deficiencies/irregularities pointed out in this Review.

I hope this Annual Review for the year 2019-20 will help improve the functioning of these departments and the divisions to ensure better quality in preparation, maintenance and timely submission of Monthly Accounts to the Accountant General.

**(John K. Sellate)**  
**Principal Accountant General (A&E)**

**Imphal**

**Date:**

## 1. Introduction

The Annual Review on the working of Public Works Divisions comprising of four Departments, Public Works (PWD), Public Health Engineering (PHED), Water Resources(WRD) and Minor Irrigation (MID),has been prepared with the objective of presenting the status of maintenance of initial and subsidiary accounts and the rendition of Monthly Accounts by Divisions to the Accountant General.

The review aims to highlight in general, the non-adherence of codes and rules by various units working under the PWD. The accounting transactions of PWD include receipt and payment under various relevant heads. There is an established accounting procedure prescribed for PWD under which compiled accounts are submitted to the O/o. The Principal Accountant General (A&E), Manipur. The financial, accounting and administrative rules and procedures to be followed by the PWD have been elaborated in Departmental Financial Rules, Manipur Financial Rules, Account Code Vol.-III and Manuals of the Department. Any deviation from these rules and procedures by the PWD authorities affects the entire process of financial accountability. It is, therefore, essential to ensure that the Departments exercise essential controls with necessary checks and balances in place and have the requisite internal control structure.

The Review has been divided into two parts. Part-A includes the irregularities/defects and omissions noticed during the checking of Monthly Accounts, and Part - B includes irregularities, objections and shortcomings noticed during Central Audit and local Audit of Public Works Divisions.

## 2. Public Works Divisions

The number of divisions in the PWD, PHED, WRD and MID during 2019-20 were as under:

| Sl. No. | Name of Department | No. of Divisions               |                        |                          |                         |
|---------|--------------------|--------------------------------|------------------------|--------------------------|-------------------------|
|         |                    | At the commencement of 2019-20 | Created during 2019-20 | Abolished during 2019-20 | At the close of 2019-20 |
| 1       | PWD                | 33                             | -                      | -                        | 33                      |
| 2       | PHED               | 25                             | -                      | -                        | 25                      |
| 3       | WRD                | 20                             | -                      | -                        | 20                      |
| 4       | MID                | 5                              | -                      | -                        | 5                       |
|         | <b>Total</b>       | <b>83</b>                      | <b>-</b>               | <b>-</b>                 | <b>83</b>               |

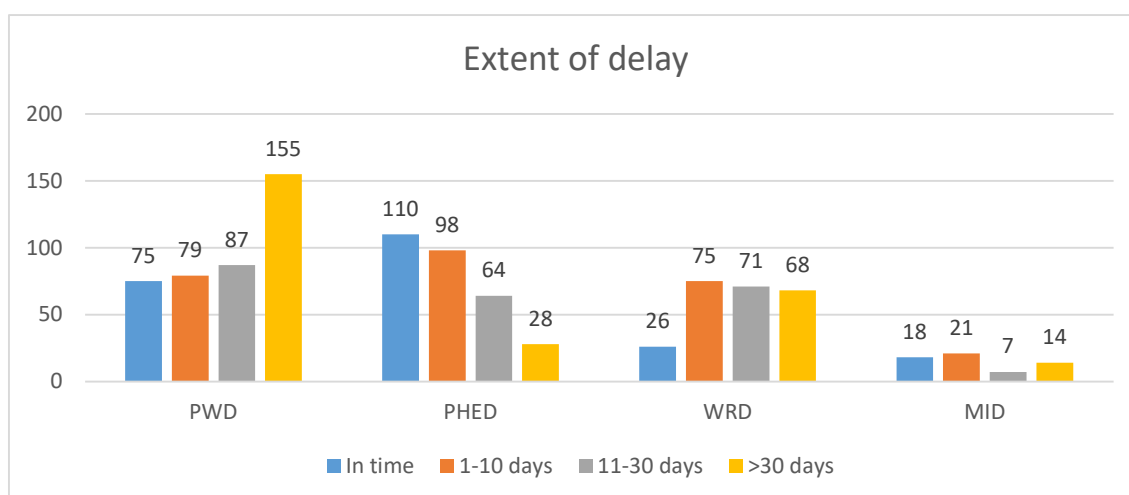
## PART – A (ACCOUNTS)

### 1. Delay in submission of Monthly Accounts.

Monthly Accounts of the divisions should reach the office of the Accountant General (A&E) not later than 10<sup>th</sup> of the following month to which they relate. However, during the course of review it was noticed that 767(77 per cent) accounts out of 996 accounts were not received within the due dates thereby causing delay in compilation and consolidation of the accounts of the State as whole. Statements showing the extent of delay in number of days are enclosed in **Annexure – A to D**. Following table shows the status of receipt of accounts.

| Sl. No. | Name of Department | Total no. of accounts to be received | No. of accounts received in time | No. of accounts delayed | Range of delay (Days) |
|---------|--------------------|--------------------------------------|----------------------------------|-------------------------|-----------------------|
| 1       | PWD                | 396                                  | 75                               | 321                     | 1-83                  |
| 2       | PHED               | 300                                  | 110                              | 190                     | 1-50                  |
| 3       | WRD                | 240                                  | 26                               | 214                     | 1-116                 |
| 4       | MID                | 60                                   | 18                               | 42                      | 4-67                  |
|         | <b>Total</b>       | <b>996</b>                           | <b>229</b>                       | <b>767</b>              | <b>1-116</b>          |

#### 1.1 Extent of Delay in submission of Monthly Accounts by Divisions



As such, urgent action needs to be initiated from the highest level to ensure timely submission of the Monthly Accounts by the Divisions so as to enable this office to prepare the Monthly Civil Accounts and in turn submit to the State Government in time.

## **2. Schedule of Misc. Public Work Advances**

In terms of Para 13.4.1 of Central Public Works Accounts Code, transactions recorded under the head “Miscellaneous Public Works Advances” are divided into four classes:

- (a) Sales on credit.
- (b) Expenditure incurred on Deposit Works in excess of deposits received.
- (c) Losses, retrenchments, errors, etc.
- (d) Other items.

In terms of Para 22.4.16, a Schedule of Misc. Public Works Advances in CPWA Form 70 should be prepared and furnished along with the monthly account, month after month, so long as there are balances outstanding under the accounts concerned. This schedule should be restricted to the items affected during the month. Besides, a list of items outstanding for more than six months is required to be furnished to Accountant General (A&E), Manipur half yearly with Monthly Accounts of September and March. However, none of the divisions rendered the Schedule of Misc. Public Works Advances along with the Monthly Accounts as per codal provisions.

Appropriate action may be initiated to ensure furnishing the Schedules of Misc. Public Works Advances of along with divisional accounts.

## **3. Cash Settlement Suspense Accounts (CSSA)**

There was no transaction under Major Head “8658-107-Cash Settlement Suspense Account” during the year 2019-20. However, there was an outstanding balance of `47.19 crore (Dr.) as on 31<sup>st</sup> March, 2020. The concerned Departments may take necessary steps to clear the balances.

## **4. Non-submission of Schedule of Reconciliation of Cheques & Remittances (CPWA Form-51)**

Divisional Officer has to submit Reconciliation Statement in Form 51 indicating the differences between the cheques issued and remittances made by the Division on one hand and cheques encashed and remittances accounted for by the bank. The Divisional Officer should also prepare and furnish list of cheques issued but not cashed and remittances made but not accounted for during the month as well as cheques issued and remittances made during the previous months accounted for in the bank scroll during the month on hand along with the Monthly Account. However, none of the divisions are submitting Reconciliation Statements in Form - 51 during the period under report.

The Departmental Heads should issue instructions to all the concerned Divisions having cheque-drawing authority to prepare Form -51 - Schedule of Reconciliation of Cheques and Remittances (Format-Annexure E) alongwith Monthly Accounts.

## 5. Position of Reconciliation:

This office had issued the Tentative Calendar for reconciliation of Departmental figures with the Principal Accountant General (A&E) figures on a quarterly basis. Necessary instructions may be issued to the Chief Controlling Officer to ensure quarterly reconciliation of expenditure booked by this office and to send reconciliation certificates promptly so that differences, if any, noticed by the Department could be rectified before the completion of the financial year. Statements showing the position of reconciliation for the year 2019-20 are as follows:-

### Reconciliation status of Expenditure and Receipt (Department wise):

| Department              | Expenditure     | Receipt         |
|-------------------------|-----------------|-----------------|
|                         | (in percentage) | (in percentage) |
| PWD                     | 90.64           | 89.53           |
| PHED                    | 100.00          | 100.00          |
| WRD                     | 92.47           | 77.12           |
| MID                     | 100.00          | 100.00          |
| <b>Total Percentage</b> | <b>95.78</b>    | <b>91.66</b>    |

## 6. Irregularities in the preparation of Monthly Accounts.

The Monthly Account should be prepared in Form 80 for presentation (with all supporting registers, schedules, vouchers, etc.) to the Divisional Officer and submission to the Accountant General (A&E), Manipur. It should be supported with the following documents:

- (a) Cash Balance Report in Form 5.
- (b) Schedule of Revenue realized in Form 46A.
- (c) Schedule of Works Expenditure in Form 64.
- (d) Classified Abstract of Expenditure in Form 74, etc.
- (e) Schedule Deposit of Works in Form 65.
- (f) Schedule of Deposits in Form 79.

It was observed that the documents mentioned above were not enclosed in most of the accounts submitted. The Divisions may be instructed to mandatorily ensure inclusion of the required forms in their Monthly Accounts.

## Part – B (AUDIT)

### Irregularities Noticed During Audit of Public Works Divisions

The result of audit for the year 2019-20 revealed that maintenance of initial records of accounts and functioning of the Divisions was not satisfactory and irregularities continued to persist despite having been pointed out in the Inspection Reports during the local Audit.

#### Statement 1

#### Important Irregularities noticed during local audit of PWD

#### Cases of defalcation and losses which are pending finalization as on 31.03.2020.

| Sl. No. | Department | Year    | Name of the office        | Amount (₹ in lakh) | Brief description of the cases                  | Present position   |
|---------|------------|---------|---------------------------|--------------------|---|--------------------|
| 1       | PWD        | 2010-11 | EE, Building Division-II  | 292.00             | Outstanding house rent                          | Pending settlement |
| 2       |            |         |                           | 0.68               | Excess billing                                  | -do-               |
| 3       |            |         | EE, Building Division-III | 42.19              | Avoidable expenditure                           | -do-               |
| 4       |            |         | EE, Sadar Hill            | 17.17              | Avoidable expenditure                           | -do-               |
| 5       | WRD & MID  | 2010-11 | EE, FCD-II                | 10.72              | Avoidable expenditure                           | -do-               |
| 6       | PWD        | 2011-12 | EE, Bishnupur             | 22.61              | Undue benefit to contractor                     | -do-               |
| 7       |            |         | EE, Bridge                | 97.29              | Undue benefit to contractor                     | -do-               |
| 8       |            |         | EE, Building Divn-III     | 135.00             | Undue benefit to contractor                     | -do-               |
| 9       | WRD & MID  | 2011-12 | EE, DBD-I                 | 38.19              | Avoidable expenditure                           | -do-               |
| 10      |            |         | EE, FCD-IV                | 17.06              | Avoidable expenditure                           | -do-               |
| 11      | PHED       | 2011-12 | EE, Ukhrul                | 25.62              | Fraudulent payment on fictitious transportation | -do-               |
| 12      |            |         |                           | 24.99              | Undue benefit to contractor                     | -do-               |
| 13      |            |         |                           | 18.25              | Extra avoidable expenditure on purchase         | -do-               |
| 14      | WRD & MID  | 2012-13 | EE, DBD-I                 | 5.18               | Undue benefit to contractor                     | -do-               |
| 15      | PWD        | 2013-14 | EE, ImphalEast            | 90.24              | Undue benefit to contractor                     | -do-               |
| 16      |            |         | EE, BD-I                  | 173.00             | Undue benefit to contractor                     | -do-               |
| 17      |            |         |                           | 46.13              | Non-deduction of                                | -do-               |
| 18      |            |         | EE, Bridge Division       | 28.48              | Undue benefit to contractor                     | -do-               |
| 19      |            |         | EE, BD-II                 | 14.42              | Avoidable expenditure                           | -do-               |
| 20      |            |         | EE, Bishnupur             | 61.19              | Undue benefit to contractor                     | -do-               |
| 21      |            |         | EE, Imphal                | 14.48              | Undue benefit to contractor                     | -do-               |
| 22      | WRD & MID  | 2013-14 | EE, KSID                  | 19.85              | Undue benefit to contractor                     | -do-               |

|    |      |         |                         |         |   |                  |                       |      |
|----|------|---------|-------------------------|---------|---|------------------|-----------------------|------|
| 23 |      |         | EE, TPD-II              | 205.59  | Avoidable expenditure   | -do-             |                       |      |
| 24 | PHED | 2013-14 | EE, Senapati            | 98.45   | Avoidable extra   | -do-             |                       |      |
| 25 | PWD  | 2014-15 | EE, NEC-II              | 2.87    | Less deduction of   | -do-             |                       |      |
| 26 |      |         | EE, Imphal East         | 13.48   | Undue benefit to  | -do-             |                       |      |
| 27 |      |         |                         | 31.46   | Avoidable expenditure on purchase of bitumen                  | -do-             |                       |      |
| 28 |      |         | EE, Sadar Hill          | 5.78    | Short deduction of sales                                      | -do-             |                       |      |
| 29 |      |         | EE, Highway South       | 17.32   | Avoidable expenditure on purchase of bitumen                  | -do-             |                       |      |
| 30 |      |         |                         | 12.64   | Short recovery of cost of bitumen                             | -do-             |                       |      |
| 31 |      |         | EE, Chandel             | 8.57    | Undue benefit to contractor due to double payment for surface | -do-             |                       |      |
| 32 |      |         | EE, NH-II               | 1.94    | Non deduction of  | -do-             |                       |      |
| 33 |      |         | EE, Bridge Division     | 16.82   | Undue benefit to contractor                                   | -do-             |                       |      |
| 34 |      |         |                         | 30.94   | Short deduction of VAT/Sales tax and                          | -do-             |                       |      |
| 35 |      |         | EE, Jiribam             | 5.27    | Undue benefit to contractor due to short recovery of cost of  | -do-             |                       |      |
| 36 |      |         | EE, Senapati            | 21.26   | Undue benefit to contractor due to short recovery of cost of  | -do-             |                       |      |
| 37 |      |         | PHED                    | 2014-15 | EE, Drainage & Sewerage                                       | 450.00           | Avoidable expenditure | -do- |
| 38 |      |         | EE, IW                  |         | 257.74  | Undue benefit to | -do-                  |      |
| 39 | PWD  | 2015-16 | EE, Mechanical-         | 23.20   | Loss of Road Roller   | -do-             |                       |      |
| 40 |      |         | EE, CCpur               | 2.08    | Undue benefit to  | -do-             |                       |      |
| 41 |      |         | EE, Bridge Division     | 34.21   | Undue benefit to  | -do-             |                       |      |
| 42 |      |         |                         | 13.30   | Short deduction of Sales tax and Labour cess                  | -do-             |                       |      |
| 43 | PHED | 2015-16 | EE, IW                  | 9.68    | Extra expenditure   | -do-             |                       |      |
| 44 |      |         | EE, WSMD-II             | 44.09   | Avoidable expenditure   | -do-             |                       |      |
| 45 |      |         | EE, Senapati            | 160.00  | Suspected misappropriation                                    | -do-             |                       |      |
| 46 |      |         | EE, Thoubal             | 53.50   | Suspected misappropriation                                    | -do-             |                       |      |
| 47 |      |         | EE, Sewerage & Drainage | 661.00  | Avoidable expenditure   | -do-             |                       |      |
| 48 | PWD  | 2016-17 | EE, Highway South       | 21.68   | Undue benefit to contractor                                   | -do-             |                       |      |
| 49 |      |         | EE, NEC-II              | 100.59  | Wasteful expenditure  | -do-             |                       |      |
| 50 |      |         | EE, Ukhrul              | 84.12   | Undue benefit to  | -do-             |                       |      |
| 51 |      |         | EE, Mechanical-I        | 1468.00 | Outstanding hiring charge of machineries                      | -do-             |                       |      |



|    |           |         |                   |         |   |       |
|----|-----------|---------|-------------------|---------|---|-------|
| 52 | WRD & MID | 2016-17 | EE, FCD-I         | 6.31    | Avoidable expenditure   | -do-  |
| 53 |           |         | EE, TPD-II        | 12.38   | Avoidable expenditure   | -do-  |
| 54 | PHED      | 2016-17 | EE, Chandel       | 12.83   | Avoidable expenditure   | -do-  |
| 55 | PWD       | 2017-18 | EE, Jiribam       | 44.49   | Avoidable expenditure   | -do-  |
| 56 |           |         | EE, M&QCD         | 36.77   | Undue benefit to contractor   | -do-  |
| 57 |           |         |                   | 29.30   | Avoidable expenditure   | -do-  |
| 58 |           |         | EE, Mechanical-   | 808.00  | Non-return of   | -do-  |
| 59 |           |         | EE, Chandel       | 6.57    | Avoidable expenditure   | -do-  |
| 60 |           |         | EE, Tamenglong    | 66.74   | Undue benefit to contractor   | -do-  |
| 61 |           |         | EE, NH-III        | 57.01   | Undue benefit to contractor   | -do-  |
| 62 |           |         |                   | 44.63   | Avoidable expenditure   | -do-  |
| 63 |           |         | EE, Highway South | 33.69   | Undue benefit to contractor   | -do-  |
| 64 |           |         | EE, Senapati      | 11.92   | Undue benefit to contractor   | -do-  |
| 65 |           |         | EE, Building-III  | 29.63   | Avoidable expenditure   | -do-  |
| 66 |           |         | EE, Sadar Hill    | 57.64   | Avoidable expenditure   | -do-  |
| 67 |           |         | EE, NH-I          | 55.28   | Avoidable expenditure   | -do-  |
| 68 |           |         | PWD               | 2018-19 | EE, NH-II   | 11.23 |
| 69 | WRD       | 2018-19 | EE, KSID          | 18.38   | Avoidable expenditure towards payment of surcharge on Electricity                         | -do-  |
| 70 |           |         | EE, QCMD          | 4.00    | Undue benefit to contractor due to non-consideration of nearest                           | -do-  |
| 71 |           |         | EE, DBD-II        | 34.25   | Overpayment to contractor due to double payment for banking                               | -do-  |
| 72 |           |         |                   | 163.00  | Extra expenditure due to extension of items of work in excess of the                      | -do-  |
| 73 |           |         |                   | 12.67   | Unauthorized expenditure due to execution of item of                                      | -do-  |
| 74 |           |         | EE, DBD-I         | 125.00  | Short deduction of VAT & labour cess  | -do-  |
| 75 |           |         |                   | 234.00  | Avoidable expenditure on transportation of  | -do-  |
| 76 |           |         |                   | 278.00  | Extra expenditure due to execution of items of work in excess of the approved quantities. | -do-  |
| 77 |           |         |                   | 8.13    | Wasteful expenditure  | -do-  |

|    |  |  |             |         |   |      |
|----|--|--|-------------|---------|---|------|
| 78 |  |  | EE, IMD-II  | 459.00  | Unproductive expenditure on day labourers drawn on Muster Rolls and work  | -do- |
| 79 |  |  |             | 1.71    | Avoidable expenditure on Electric consumption   | -do- |
| 80 |  |  | EE, FCD-I   | 7.84    | Extra expenditure due to incorrect adoption of  | -do- |
| 81 |  |  | EE, TPD-II  | 55.07   | Unproductive expenditure on day labourers drawn on Muster Rolls and work  | -do- |
| 82 |  |  | EE, FCD-II  | 27.66   | Extra expenditure due to award of work at rate higher than the  | -do- |
| 83 |  |  |             | 9.90    | Undue benefit to contractor due to inclusion for carriage of  | -do- |
| 84 |  |  | EE, FCD-III | 15.57   | Extra expenditure due to incorrect analysis of rates  | -do- |
| 85 |  |  |             | 19.75   | Excess payment to contractor due to non-deduction of agency charges and consequently resulting in   | -do- |
| 86 |  |  |             | 245.72  | Non-clearance of contractors liabilities and diversion of NABARD loan towards VAT and   | -do- |
| 87 |  |  |             | 113.00  | Unproductive expenditure on day labourers drawn on Muster Rolls and work  | -do- |
| 88 |  |  | EE, TPD-I   | 4792.00 | Undue financial benefit to contractor due to irregular payment of cost escalation compiled with non-levy of liquidated damages for delay in | -do- |
| 89 |  |  |             | 10.13   | Undue benefits to contractors due to short recovery of cost of  | -do- |
| 90 |  |  |             | 14.92   | Extra expenditure due to execution of work in excess of the approved  | -do- |
| 91 |  |  |             | 72.46   | Unproductive expenditure on wages of Muster Rolls and Pay   | -do- |

|     |                         |         |                          |         |   |       |
|-----|-------------------------|---------|--------------------------|---------|---|-------|
| 92  | PWD                     | 2019-20 | EE, EAP                  | 578.00  | Non-utilisation of excavated hard rock  | -do-  |
| 93  |                         |         |                          | 159.39  | Irregular payment of compensation of ` 64.61 lakh for forest trees and ` 94.78 lakh for agriculture crops | -do-  |
| 94  |                         |         |                          | 18.69   | Undue benefit to  | -do-  |
| 95  |                         |         | Chief Engineer           | 411.53  | Irregular inclusion of Agency charge in the   | -do-  |
| 96  |                         |         | Addl. Chief Engineer-I   | 1.96    | Adoption of longer lead resulting in inflation of <del>TC amount</del>                                    | -do-  |
| 97  |                         |         | Addl. Chief Engineer-III | 13.16   | Inflated estimates due to incorrect analysis of rate  | -do-  |
| 98  |                         |         | SE-III                   | 13.32   | Inflated Estimates due to incorrect analysis of rate  | -do-  |
| 99  |                         |         | SE-II                    | 19.76   | Inflated estimates due to incorrect analysis of rates   | -do-  |
| 100 |                         |         | EE, Noney                | 14.44   | Non-recovery of amount of compensation for delay in completion of   | -do-  |
| 101 |                         |         | EE, Pherzawl             | 28.11   | Non recovery of amount of compensation for delay in completion of   | -do-  |
| 102 |                         |         | EE, Imphal West          | 453.00  | Undue financial benefit to contractors due to incorrect analysis of rates                                 | -do-  |
| 103 |                         |         |                          | 19.51   | Diversion of fund   | -do-  |
| 104 |                         |         | EE, Bridge               | 57.92   | Delay in completion of works and non-recovery of compensation for delay in completion                     | -do-  |
| 105 |                         |         | EE, Thoubal              | 31.35   | Extra expenditure due to incorrect analysis   | -do-  |
| 106 |                         |         |                          | 47.95   | Unproductive expenditure on day labourers drawn on  | -do-  |
| 107 |                         |         | EE, MQCD                 | 603.00  | Non-completion of the work of setting up of IT-SEZ Building & non-recovery of compensation for delay      | -do-  |
| 108 |                         |         | PHED                     | 2019-20 | EE, WSMD-I  | 14.08 |
| 109 | EE, Drainage & Sewerage | 8.19    |                          |         | Avoidable expenditure   | -do-  |
| 110 | EE, Water Supply PCD    | 332.54  |                          |         | Non-realisation of water rent   | -do-  |

|            |  |  |              |        |   |      |
|------------|--|--|--------------|--------|---|------|
| <b>111</b> |  |  | EE, WSMD-II  | 281.00 | Non-realisation of<br>outstanding water                           | -do- |
| <b>112</b> |  |  | EE, Kakching | 120.00 | Non-functional schemes<br>rendering the<br>expenditure unfruitful | -do- |

## Statement 2

### Statement of objections regarding Public Works Divisions upto 2019-20

| Sl. No.        | Department | Name of divisions                    | Objections |                   |
|----------------|------------|--------------------------------------|------------|-------------------|
|                |            |                                      | Items no.  | Amount ( in lakh) |
| <b>2010-11</b> |            |                                      |            |                   |
| 1              | PWD        | EE, Ukhrol                           | 4          | 44.68             |
| 2              |            | EE, Building Division-I              | 3          | 137.60            |
| 3              |            | EE, Bishnupur                        | 5          | 189.74            |
| 4              |            | EE, NH-I                             | 3          | 63.06             |
| 5              |            | EE, Thoubal                          | 3          | 540.30            |
| 6              |            | EE, Senapati                         | 6          | 2419.19           |
| 7              |            | EE, Building Division-II             | 8          | 563.48            |
| 8              |            | EE, Building Division-III            | 4          | 54.22             |
| 9              |            | EE, Sadar Hill                       | 5          | 38.93             |
| 10             | PHED       | EE, IE                               | 3          | 121.64            |
| 11             |            | EE, WSM-I                            | 2          | 66.86             |
| 12             |            | EE, Store Division                   | 3          | 72.33             |
| 13             |            | EE, IW                               | 4          | 353.31            |
| 14             |            | EE, Bishnupur                        | 2          | 1.61              |
| 15             | WRD & MID  | EE, DBD-I                            | 2          | 272.01            |
| 16             |            | EE, FCD-III                          | 4          | 39.19             |
| 17             |            | EE, FCD-I                            | 4          | 18.82             |
| 18             |            | EE, FCD-II                           | 2          | 593.88            |
| <b>2011-12</b> |            |                                      |            |                   |
| 19             | PWD        | EE, IE                               | 5          | 4164.14           |
| 20             |            | EE, Chandel                          | 3          | 43.11             |
| 21             |            | EE, NH-I                             | 1          | 18.30             |
| 22             |            | EE, Bishnupur                        | 3          | 40.37             |
| 23             |            | EE, IW                               | 3          | 38.11             |
| 24             | PHED       | EE, Drainage & Sewerage              | 3          | 104.47            |
| 25             |            | EE, Ukhrol                           | 5          | 185.45            |
| 26             |            | EE, Churachandpur                    | 1          | 21.41             |
| 27             |            | EE, Chandel                          | 4          | 468.01            |
| 28             | WRD & MID  | EE, TPD-I                            | 4          | 2365.00           |
| 29             |            | EE, KSI                              | 2          | 101.07            |
| 30             |            | EE, TPD-II                           | 3          | 350.00            |
| 31             |            | Assistant Engineer, Minor Irrigation | 2          | 0                 |
| 32             |            | EE, DBD-I                            | 2          | 74.02             |
| <b>2012-13</b> |            |                                      |            |                   |
| 33             | PWD        | EE, Bridge Division                  | 3          | 317.31            |
| 34             |            | EE, Building Division-II             | 1          | 1600.00           |
| 35             |            | EE, Building Division-III            | 4          | 508.11            |
| 36             |            | EE, Tamenglong                       | 4          | 148.81            |
| 37             |            | EE, CCpur                            | 3          | 77.95             |
| 38             | PHED       | EE, Project Constn.                  | 3          | 3.68              |
| 39             |            | EE, IW                               | 1          | 304.64            |

|                |           |   |    |          |
|----------------|-----------|---|----|----------|
| 40             |           | EE, IPD                                       | 3  | 413.60   |
| 41             |           | EE, Thoubal                                   | 5  | 0        |
| 42             | WRD & MID | EE, MID-I                                     | 3  | 43.00    |
| 43             |           | EE, Task Force, Thoubal Multi-purpose Project | 1  | 0        |
| 44             |           | EE, TPD-I                                     | 1  | 82.32    |
| 45             |           | EE, TPD-II                                    | 1  | 80.87    |
| 46             |           | EE, FCD-I                                     | 2  | 1791.08  |
| 47             |           | EE, FCD-II                                    | 2  | 0        |
| 48             |           | EE, DBD-I                                     | 2  | 5.18     |
| 49             |           | EE, MID-IV                                    | 4  | 85.35    |
| 50             |           | EE, DBD-II                                    | 3  | 6.19     |
| 51             |           | EE, FCD-IV                                    | 3  | 129.10   |
| 52             |           | EE, Khuga Headwork Divn.                      | 6  | 332.01   |
| 53             |           | EE, TPD-IV                                    | 4  | 131.67   |
| 54             |           | EE, MID-II                                    | 6  | 4471.86  |
| 55             |           | EE, MID-I                                     | 4  | 95.19    |
| 56             |           | EE, FCD-III                                   | 7  | 485.76   |
| 57             |           | EE, MID-III                                   | 12 | 210.94   |
| <b>2013-14</b> |           |   |    |          |
| 58             | PWD       | EE, IE  | 4  | 174.09   |
| 59             |           | EE, Building Division-I                       | 4  | 602.13   |
| 60             |           | EE, Mechanical-II                             | 2  | 13.32    |
| 61             |           | EE, Bridge Division                           | 3  | 28.48    |
| 62             |           | EE, Building Division-II                      | 2  | 5.39     |
| 63             |           | EE, Sadar Hill                                | 3  | 42.43    |
| 64             |           | EE, Thoubal                                   | 4  | 46.08    |
| 65             |           | EE, Bishnupur                                 | 4  | 73.37    |
| 66             |           | EE, Highway South                             | 1  | 0        |
| 67             |           | EE, IW  | 3  | 16.29    |
| 68             |           | EE, Bridge Division                           | 9  | 420.86   |
| 69             |           | EE, Electrical Division-III                   | 11 | 371.62   |
| 70             |           | EE, Road Task Force                           | 2  | 5.72     |
| 71             |           | EE, Electrical Division-II                    | 10 | 3447.71  |
| 72             | PHED      | EE, Jiribam                                   | 4  | 311.32   |
| 73             |           | EE, IW  | 3  | 215.82   |
| 74             |           | EE, Mechanical & Electrical                   | 1  | 120.00   |
| 75             |           | EE, Drainage & Sewerage                       | 6  | 638.51   |
| 76             |           | EE, WSSD                                      | 5  | 88.30    |
| 77             |           | EE, WSMD-II                                   | 4  | 265.00   |
| 78             |           | EE, Thoubal                                   | 6  | 0        |
| 79             |           | EE, IE  | 10 | 28.55    |
| 80             |           | EE, PCD                                       | 10 | 156.05   |
| 81             |           | EE, Chandel                                   | 10 | 52.04    |
| 82             |           | EE, Senapati                                  | 8  | 259.96   |
| 83             |           | EE, Ukhrul                                    | 10 | 183.57   |
| 84             |           | EE, Bishnupur                                 | 4  | 16.78    |
| 85             | WRD & MID | EE, MID-IV                                    | 11 | 19632.81 |

|                |           |                             |    |         |
|----------------|-----------|-----------------------------|----|---------|
| 86             |           | EE, TPD-IV                  | 1  | 0       |
| 87             |           | EE, MID-I                   | 8  | 1.78    |
| 88             |           | EE, KSI                     | 2  | 19.85   |
| 89             |           | EE, FCD-III                 | 11 | 4430.04 |
| 90             |           | EE, Khuga Headwork Divn     | 4  | 50.58   |
| 91             |           | EE, DBD-II                  | 2  | 20.11   |
| <b>2014-15</b> |           |                             |    |         |
| 92             | PWD       | EE, Building Division-I     | 8  | 0       |
| 93             |           | EE, NEC-II                  | 6  | 2.87    |
| 94             |           | EE, NH-III                  | 8  | 77.59   |
| 95             |           | EE, IW                      | 5  | 35.59   |
| 96             |           | EE, Ukhrul                  | 4  | 395.70  |
| 97             |           | EE, IE                      | 9  | 46.94   |
| 98             |           | EE, Bishnupur               | 6  | 514.52  |
| 99             |           | EE, Thoubal                 | 1  | 0       |
| 100            |           | EE, Sadar Hills             | 5  | 54.23   |
| 101            |           | EE, Highway South           | 12 | 1938.94 |
| 102            |           | EE, Tamenglong              | 5  | 0.81    |
| 103            |           | EE, CCpur                   | 5  | 88.65   |
| 104            |           | EE, NH-I                    | 6  | 554.39  |
| 105            |           | EE, Chandel                 | 10 | 42.89   |
| 106            |           | EE, Building Division-I     | 2  | 0       |
| 107            |           | EE, NH-II                   | 10 | 170.23  |
| 108            |           | EE, Bridge Division         | 8  | 195.55  |
| 109            |           | EE, Jiribam                 | 7  | 5.27    |
| 110            |           | EE, Senapati                | 8  | 921.57  |
| 111            | PHED      | EE, WSMD-I                  | 4  | 139.00  |
| 112            |           | EE, D&SD                    | 5  | 585.25  |
| 113            |           | EE, WSMD-II                 | 7  | 0.21    |
| 114            |           | EE, IW                      | 5  | 342.41  |
| 115            |           | EE, Tamenglong              | 8  | 7.80    |
| 116            |           | EE, CCpur                   | 6  | 20.93   |
| 117            |           | EE, IE                      | 6  | 1.66    |
| 118            |           | EE, WSMD-I                  | 3  | 0       |
| 119            |           | EE, Mechanical & Electrical | 3  | 112.54  |
| 120            |           | EE, M&QCD                   | 4  | 27.65   |
| 121            | WRD & MID | EE, MID-I                   | 7  | 1477.52 |
| 122            |           | EE, FCD-IV                  | 6  | 244.96  |
| 123            |           | EE, Khuga Canal Divn-I      | 8  | 147.69  |
| 124            |           | EE, TPD-II                  | 6  | 248.36  |
| 125            |           | EE, FCD-I                   | 4  | 713.46  |
| 126            |           | EE, FCD-IV                  | 5  | 21.26   |
| 127            |           | EE, Khuga Canal Divn-I      | 9  | 119.97  |
| 128            |           | EE, FCD-II                  | 1  | 31.84   |
| 129            |           | EE, TPD-I                   | 15 | 1705.00 |
| 130            |           | EE, QC&MD                   | 3  | 74.90   |
| 131            |           | EE, MID-II                  | 4  | 13.27   |
| 132            |           | EE, MID-IV                  | 3  | 0       |

|                |               |                                   |                                      |         |        |
|----------------|---------------|-----------------------------------|--------------------------------------|---------|--------|
| 133            |               | EE, Electrical & Mechanical Divn. | 9                                    | 2292.00 |        |
| <b>2015-16</b> |               |                                   |                                      |         |        |
| 134            | PWD           | EE, ImphalWest                    | 3                                    | 491.93  |        |
| 135            |               | EE, NEC-II                        | 7                                    | 38.12   |        |
| 136            |               | EE, Senapati                      | 9                                    | 124.04  |        |
| 137            |               | EE, Bishnupur                     | 3                                    | 33.28   |        |
| 138            |               | EE, Ukhrul                        | 5                                    | 38.64   |        |
| 139            |               | EE, Thoubal                       | 4                                    | 9.98    |        |
| 140            |               | EE, Mechanical-I                  | 4                                    | 23.20   |        |
| 141            |               | EE, Building Div-I                | 1                                    | 0       |        |
| 142            |               | EE, Building Div-III              | 2                                    | 73.70   |        |
| 143            |               | EE, Highway Div-I                 | 5                                    | 53.16   |        |
| 144            |               | EE, CCpur                         | 5                                    | 20.35   |        |
| 145            |               | EE, Bridge                        | 4                                    | 118.56  |        |
| 146            |               | PHED                              | EE, Investigation, Planning & Design | 4       | 0      |
| 147            |               |                                   | EE, Project Construction Divn        | 7       | 195.23 |
| 148            | EE, IW        |                                   | 9                                    | 75.28   |        |
| 149            | EE, WSMD-II   |                                   | 5                                    | 281.04  |        |
| 150            | EE, Senapati  |                                   | 10                                   | 674.30  |        |
| 151            | EE, Bishnupur |                                   | 2                                    | 0.95    |        |
| 152            | EE, Thoubal   |                                   | 7                                    | 381.39  |        |
| 153            | EE, D&SD      |                                   | 8                                    | 3578.92 |        |
| 154            | EE, WSMD-I    |                                   | 5                                    | 608.60  |        |
| 155            | EE, CCpur     |                                   | 9                                    | 56.22   |        |
| 156            | WRD & MID     | EE, DBD-I                         | 6                                    | 375.34  |        |
| 157            |               | Chief Engineer, IFCD              | 2                                    | 7.58    |        |
| 158            |               | Engineer Assistant, MI Circle     | 4                                    | 4.02    |        |
| 159            |               | EE, FCD-III                       | 5                                    | 8.19    |        |
| 160            |               | EE, Khuga Canal Div-I             | 5                                    | 293.21  |        |
| 161            |               | EE, FCD-I                         | 2                                    | 0       |        |
| 162            |               | EE, MID-I                         | 3                                    | 74.76   |        |
| 163            |               | EE, MID-III                       | 2                                    | 408.83  |        |
| 164            |               | EE, FCD-IV                        | 4                                    | 57.86   |        |
| 165            |               | EE, TPD-I                         | 6                                    | 83.51   |        |
| 166            |               | EE, TPD-II                        | 5                                    | 455.74  |        |
| 167            |               | EE, Irrigation Maintenance-II     | 7                                    | 11.36   |        |
| <b>2016-17</b> |               |                                   |                                      |         |        |
| 168            | PWD           | EE, Highway Div-II                | 4                                    | 7024.85 |        |
| 169            |               | EE, Jiribam                       | 4                                    | 15.15   |        |
| 170            |               | EE, M&QCD                         | 3                                    | 4.86    |        |
| 171            |               | EE, Highway South                 | 11                                   | 272.44  |        |
| 172            |               | EE, Thoubal                       | 8                                    | 106.21  |        |
| 173            |               | EE, NEC-II                        | 7                                    | 787.15  |        |
| 174            |               | EE, Ukhrul                        | 10                                   | 93.77   |        |
| 175            |               | EE, Mechanical Divn-I             | 5                                    | 1472.62 |        |
| 176            |               | EE, Bishnupur                     | 8                                    | 9.74    |        |
| 177            |               | EE, IW                            | 6                                    | 987.17  |        |



|                |                       |                                     |                               |          |       |
|----------------|-----------------------|-------------------------------------|-------------------------------|----------|-------|
| 178            |                       | EE, Building Div-III                | 7                             | 177.63   |       |
| 179            |                       | EE, Highway Div-I                   | 4                             | 0        |       |
| 180            |                       | EE, Bridge Div-I                    | 10                            | 19874.70 |       |
| 181            | PHED                  | EE, Ukhrul                          | 6                             | 150.52   |       |
| 182            |                       | EE, Mechanical & Electrical         | 4                             | 46.21    |       |
| 183            |                       | EE, Tamenglong                      | 8                             | 116.55   |       |
| 184            |                       | EE, WSMD-II                         | 9                             | 81.65    |       |
| 185            |                       | EE, IE                              | 10                            | 170.39   |       |
| 186            |                       | EE, Chandel                         | 8                             | 1046.00  |       |
| 187            |                       | EE, PCD                             | 6                             | 559.52   |       |
| 188            |                       | EE, Bishnupur                       | 8                             | 598.45   |       |
| 189            |                       | EE, Investigation, Planning &       | 5                             | 0        |       |
| 190            |                       | EE, Senapati                        | 5                             | 59.78    |       |
| 191            |                       | EE, IW                              | 8                             | 5.56     |       |
| 192            |                       | EE, Drainage & Sewerage             | 6                             | 1161.95  |       |
| 193            |                       | EE, CCpur                           | 9                             | 75.66    |       |
| 194            |                       | EE, WSMD-I                          | 9                             | 824.56   |       |
| 195            |                       | EE, Thoubal                         | 4                             | 101.00   |       |
| 196            |                       | WRD & MID                           | EE, Irrigation Maintenance-II | 7        | 11.36 |
| 197            |                       |                                     | SE, Flood Maintenance Circle  | 5        | 0     |
| 198            | EE, MID-II            |                                     | 4                             | 14.90    |       |
| 199            | Chief Engineer, IFCD  |                                     | 4                             | 0        |       |
| 200            | EE, Khuga Canal Div-I |                                     | 3                             | 206.16   |       |
| 201            | EE, FCD-III           |                                     | 5                             | 26.70    |       |
| 202            | EE, FCD-IV            |                                     | 4                             | 0        |       |
| 203            | EE, MID-I             |                                     | 3                             | 465.00   |       |
| 204            | EE, FCD-I             |                                     | 6                             | 183.85   |       |
| 205            | EE, TPD-II            |                                     | 11                            | 297.37   |       |
| <b>2017-18</b> |                       |                                     |                               |          |       |
| 206            | PWD                   | Addl. Chief Engineer-III            | 4                             | 1.40     |       |
| 207            |                       | Addl. Chief Engineer-I              | 4                             | 0        |       |
| 208            |                       | Superintending Engineer-I           | 7                             | 0        |       |
| 209            |                       | Addl. Chief Engineer-II             | 2                             | 0        |       |
| 210            |                       | Chief Engineer (Building)           | 3                             | 0        |       |
| 211            |                       | Chief Engineer                      | 6                             | 5.78     |       |
| 212            |                       | EE, Mechanical Divn-II              | 4                             | 0        |       |
| 213            |                       | Superintending Engineer-II          | 4                             | 0        |       |
| 214            |                       | EE, Jiribam                         | 9                             | 99.77    |       |
| 215            |                       | EE, IE                              | 11                            | 24.83    |       |
| 216            |                       | EE, M&QCD                           | 6                             | 87.80    |       |
| 217            |                       | EE, Mechanical Div-I                | 6                             | 876.90   |       |
| 218            |                       | EE, Chandel                         | 9                             | 12.88    |       |
| 219            |                       | Superintending Engineer, Electrical | 6                             | 7.23     |       |
| 220            |                       | EE, Store Divn                      | 6                             | 38.63    |       |
| 221            |                       | EE, Tamenglong                      | 10                            | 363.37   |       |
| 222            |                       | Superintending Engineer, NH Circle  | 3                             | 0        |       |
| 223            | EE, NH-III            | 8                                   | 232.67                        |          |       |

|                |     |                             |    |         |
|----------------|-----|-----------------------------|----|---------|
| 224            |     | EE, Building-I              | 8  | 5385.05 |
| 225            |     | EE, Highway South           | 9  | 48.57   |
| 226            |     | EE, Building-II             | 10 | 482.29  |
| 227            |     | Superintending Engineer-III | 6  | 0       |
| 228            |     | EE, Senapati                | 7  | 91.24   |
| 229            |     | EE, Electrical-III          | 6  | 5.78    |
| 230            |     | EE, Electrical-I            | 7  | 0       |
| 231            |     | EE, CCpur                   | 7  | 46.68   |
| 232            |     | EE, Electrical-II           | 5  | 0       |
| 233            |     | EE, Building-III            | 8  | 367.89  |
| 234            |     | EE, Ukhrul                  | 9  | 35.19   |
| 235            |     | EE, IW                      | 5  | 66.39   |
| 236            |     | EE, Bridge                  | 8  | 61.59   |
| 237            |     | EE, Thoubal                 | 7  | 151.33  |
| 238            |     | EE, NEC-II                  | 5  | 92.75   |
| 239            |     | EE, NH-III                  | 9  | 174.74  |
| 240            |     | EE, Sadar Hills             | 13 | 148.65  |
| 241            |     | EE, Bishnupur               | 10 | 91.47   |
| 242            |     | EE, NH-I                    | 10 | 55.28   |
| <b>2018-19</b> |     |                             |    |         |
| 243            | PWD | Addl. CE-III                | 4  | 1.40    |
| 244            |     | Commissioner (Works)        | 2  | 0       |
| 245            |     | Addl. CE-I                  | 4  | 0       |
| 246            |     | SE-I                        | 7  | 0       |
| 247            |     | Addl. CE-II                 | 2  | 0       |
| 248            |     | Chief Engineer (Building)   | 3  | 0       |
| 249            |     | Chief Engineer              | 6  | 5.78    |
| 250            |     | EE, Mechanical-II           | 4  | 0       |
| 251            |     | SE-II                       | 2  | 0       |
| 252            |     | EE, Jiribam                 | 7  | 5.49    |
| 253            |     | EE, IE                      | 8  | 7.95    |
| 254            |     | EE, MQCD                    | 3  | 6.87    |
| 255            |     | EE, Mechanical-I            | 2  | 66.90   |
| 256            |     | EE, Chandel                 | 8  | 12.88   |
| 257            |     | SE, Electrical              | 6  | 7.23    |
| 258            |     | EE, Store                   | 4  | 0       |
| 259            |     | EE, Tamenglong              | 5  | 1.11    |
| 260            |     | SE, National Highway Circle | 2  | 0       |
| 261            |     | EE, NH-III                  | 5  | 50.66   |
| 262            |     | EE, Building Divn-I         | 7  | 1082.05 |
| 263            |     | EE, Highway South           | 7  | 14.88   |
| 264            |     | EE, Building Divn-II        | 8  | 5.59    |
| 265            |     | SE-III                      | 4  | 0       |
| 266            |     | EE, Senapati                | 4  | 59.34   |
| 267            |     | EE, Electrical-III          | 4  | 5.78    |
| 268            |     | EE, Electrical-I            | 4  | 0       |
| 269            |     | EE, CCpur                   | 5  | 3.43    |
| 270            |     | EE, Electrical-II           | 2  | 0       |
| 271            |     | EE, Building Div-III        | 4  | 0       |

|                |                                     |                          |                     |         |
|----------------|-------------------------------------|--------------------------|---------------------|---------|
| 272            |                                     | EE, ImphalWest           | 2                   | 0       |
| 273            |                                     | EE, Bridge Divn          | 6                   | 0       |
| 274            |                                     | EE, Thoubal              | 4                   | 0       |
| 275            |                                     | EE, NEC-II               | 5                   | 92.73   |
| 276            |                                     | EE, NH                   | 6                   | 1.40    |
| 277            |                                     | EE, Sadar Hills          | 10                  | 40.07   |
| 278            |                                     | EE, Bishnupur            | 9                   | 91.47   |
| 279            |                                     | EE, NH-I                 | 8                   | 0       |
| 280            | PHED                                | SE, Urban Circle         | 2                   | 0       |
| 281            |                                     | Addl. CE                 | 2                   | 0       |
| 282            |                                     | EE, WSMD-I               | 8                   | 1481.14 |
| 283            |                                     | SE, Rural Circle-I       | 3                   | 0       |
| 284            |                                     | EE, Drainage & Sewerage  | 9                   | 1247.19 |
| 285            |                                     | EE, Water Supply Project | 7                   | 415.99  |
| 286            |                                     | WRD & MID                | Chief Engineer, WRD | 4       |
| 287            | SE, Flood Management Circle         |                          | 3                   | 0       |
| 288            | SE, Thoubal Circle-I                |                          | 1                   | 6.69    |
| 289            | SE, Khuga Project Circle            |                          | 4                   | 596.00  |
| 290            | Addl. CE-I                          |                          | 3                   | 0       |
| 291            | SE, Irrigation Circle-I             |                          | 1                   | 0       |
| 292            | EE, KSID                            |                          | 4                   | 591.38  |
| 293            | Addl. CE-II                         |                          | 1                   | 0       |
| 294            | EE, Project Store Divn              |                          | 3                   | 641.00  |
| 295            | SE, Irrigation Circle-II            |                          | 3                   | 0       |
| 296            | EE, FCD-IV                          |                          | 7                   | 0       |
| 297            | EE, QC&MD                           |                          | 5                   | 4.00    |
| 298            | Chief Engineer, MID                 |                          | 3                   | 0.87    |
| 299            | EE, MID-II                          |                          | 6                   | 0       |
| 300            | EE, MID-IV                          |                          | 7                   | 0       |
| 301            | EE, MID-III                         |                          | 7                   | 0       |
| 302            | EE, DBD-II                          |                          | 6                   | 321.72  |
| 303            | EE, DBD-I                           |                          | 9                   | 665.23  |
| 304            | EE, Irrigation Maintenance Divn.-II |                          | 11                  | 470.41  |
| 305            | EE, FCD-I                           |                          | 6                   | 39.13   |
| 306            | EE, MI Divn.-I                      |                          | 1                   | 0       |
| 307            | EE, TPD-IV                          |                          | 13                  | 281.92  |
| 308            | EE, TPD-II                          |                          | 8                   | 310.67  |
| 309            | EE, FCD-II                          | 4                        | 37.56               |         |
| 310            | EE, FCD-III                         | 7                        | 433.84              |         |
| 311            | EE, TPD-I                           | 6                        | 4889.51             |         |
| <b>2019-20</b> |                                     |                          |                     |         |
| 312            | PWD                                 | EE, NH-II                | 6                   | 11.23   |
| 313            |                                     | PD, EAP                  | 6                   | 162.17  |
| 314            |                                     | Chief Engineer           | 5                   | 411.53  |
| 315            |                                     | Addl. Chief Engineer-I   | 2                   | 1.96    |
| 316            |                                     | Addl. Chief Engineer-II  | 1                   | 0       |
| 317            |                                     | Addl. Chief Engineer-III | 3                   | 13.16   |
| 318            |                                     | EE TPL Divn.             | 3                   | 14.64   |
| 319            |                                     | SE NHC                   | 1                   | 0       |

|            |      |                      |    |        |
|------------|------|----------------------|----|--------|
| <b>320</b> |      | SE-III               | 2  | 13.32  |
| <b>321</b> |      | SE-II                | 3  | 19.76  |
| <b>322</b> |      | EE, Noney            | 5  | 15.90  |
| <b>323</b> |      | EE, Pherzawl         | 6  | 36.54  |
| <b>324</b> |      | EE, Kakching         | 5  | 115.85 |
| <b>325</b> |      | EE, Ukhrul           | 4  | 26.23  |
| <b>326</b> |      | EE, Imphal West      | 10 | 44.24  |
| <b>327</b> | PHED | EE, Water Supply PCD | 7  | 415.99 |
| <b>328</b> |      | EE, WSD-II           | 8  | 433.00 |
| <b>329</b> |      | EE, Thoubal          | 10 | 25.00  |
| <b>330</b> |      | Chief Engineer       | 3  | 0      |
| <b>331</b> |      | EE, Kakching         | 7  | 215.95 |
| <b>332</b> |      | EE, Chandel          | 7  | 0      |
| <b>333</b> |      | EE, Tengnoupal       | 7  | 124.41 |
| <b>334</b> |      | EE, Store Divn.      | 4  | 241.70 |

### Statement-3

**List of Divisions from which even first reply is due to the Inspection Report issued upto 31.03.2020**

| Sl. No.        | Department | Name of divisions    | Reference to IR                                 | Paras                                |   |
|----------------|------------|----------------------|---|--------------------------------------|---|
| <b>2010-11</b> |            |                      |   |                                      |   |
| 1              | PWD        | EE, Bridge Division  | OA-II/IR/1-40(W)/EE-BD/PWD/2010-11              | 9                                    |   |
| 2              | WRD        | EE, FCD-III          | OA-II/IR/6-5(W)/EE-FCD-III/IFCD/10-11           | 4                                    |   |
| 3              |            | EE, FCD-I            | OA-II/IR/5-8(W)/EE-FCD-I/2010-11                | 4                                    |   |
| <b>2011-12</b> |            |                      |   |                                      |   |
| 4              | WRD & MID  | EE, FCD-IV           | OA-II/IR/2-34(W)/EE-FCD-IV/IFCD/11-12           | 3                                    |   |
| 5              |            | EE, Khuga            | OA-II/IR/5-23(W)/EE-KHD/2010-11                 | 6                                    |   |
| 6              |            | EE, MID-II           | OA-II/IR/5-20(W)/EE-MID-II/11-12                | 6                                    |   |
| 7              |            | EE, MID-I            | OA-II/IR/5-20(W)/EE-MID-I/2012-13               | 4                                    |   |
| <b>2012-13</b> |            |                      |   |                                      |   |
| 8              | PWD        | EE, Building Div-III | OA-II/IR/1-26(W)/BD-III/PWD/12-13               | 4                                    |   |
| 9              |            | EE, Road Task Force  | OA-II/IR/1-76(W)/EE-RTF/DIV-I/2012-13           | 2                                    |   |
| 10             | WRD & MID  | EE, FCD-III          | OA-II/IR/2-64(W)/EE-FCD-III/2012-13             | 7                                    |   |
| 11             |            | EE, MID-III          | OA-II/IR/2-269(W)/EE-MID-III/10-11              | 12                                   |   |
| <b>2013-14</b> |            |                      |   |                                      |   |
| 12             | PWD        | EE, ImphalEast       | OA-II/IR/1-44(W)/EE-IED/PWD/2012-13             | 4                                    |   |
| 13             |            | EE, ED-III           | OA-II/IR/1-68(W)/ED-                            | 11                                   |   |
| 14             |            | EE, ED-II            | OA-II/IR/1-67(W)/ED-II/Khoyathong/2013-14       | 10                                   |   |
| 15             | WRD & MID  | EE, MID-III          | OA-II/IR/2-69(W)/EE-MID-III/13-14               | 11                                   |   |
| 16             |            | EE, MID-I            | OA-II/IR/2-55(W)/EE-MID-I/IFCD/2009-            | 8                                    |   |
| 17             |            | EE, FCD-III          | OA-II/2-77(W)/EE-FCD-III/13-14                  | 11                                   |   |
| 18             |            | EE, Khuga            | OA-II/IR/2-81(W)/EE-KHD/CCPUR/13-14             | 4                                    |   |
| 19             |            | EE, FCD-IV           |   | 6                                    |   |
| <b>2014-15</b> |            |                      |   |                                      |   |
| 20             | PWD        | EE, Building Divn-II | OA-II/IR/1-95(W)/BD-II/Khoyathong/13-14         | 8                                    |   |
| 21             |            | EE, NEC-II           | OA-II/IR/1-102(W)/EE-NEC-II/14-15               | 6                                    |   |
| 22             |            | EE, Sadar Hills      | OA-II/IR-1-109(W)/EE, Sadar Hills/<br>PWD/14-15 | 5                                    |   |
| 23             |            | EE, Highway South    | OA-II/IR/1-120(W)/EE/HWS/PWD/14-15              | 12                                   |   |
| 24             |            | EE, Tamenglong       | OA-II/IR/1-124(W)/EE-PWD/TML/14-15              | 5                                    |   |
| 25             |            | EE, Highway Div-I    | OA-II/IR/1-119(W)/EE-NH-I/PWD/14-15             | 7                                    |   |
| 26             |            | EE, Chandel          | PAG(Au)/LAG-I/1/EE/CDL/PWD/14-15                | 10                                   |   |
| 27             |            | EE, Highway Divn-II  | PAG(Au)/LAG-I/1/EE-NH-II/PWD/14-15              | 10                                   |   |
| 28             |            | EE, Bridge Division  | PAG(Au)/LAG-I/1/EE-BD/PWD/14-15                 | 10                                   |   |
| 29             |            | WRD & MID            | EE, MID-I                                       |                                      | 7 |
| 30             |            |                      | EE, FCD-IV                                      | OA-II/IR/3-99(W)/EE-FCD-IV/BPR/2013- | 5 |
| 31             |            |                      | EE, Khuga Canal-I                               | OA-II/IR/2-92(W)/EE-KCD-I/CCPUR/13-  | 8 |
| 32             |            |                      | EE, TPD-II                                      |                                      | 6 |
| 33             | EE, TPD-I  |                      | OA-II/IR/3-103(W)/EE-TPD-                       | 15                                   |   |

|                |           |                                   |  |    |
|----------------|-----------|-----------------------------------|--|----|
| 34             |           | EE, QC&MD                         |  | 3  |
| 35             |           | EE, MID-II                        | OA-II/IR/3-112(W)/EE-MI-II/2014-15           | 4  |
| 36             |           | EE, MID-IV                        | OA-II/IR/3-123(W)/EE-MID-IV/14-15            | 3  |
| 37             |           | EE, Electrical & Mechanical Divn. | OA-II/IR/3-122(W)/EE-M&ED/IFCD/14-15         | 9  |
| <b>2015-16</b> |           |                                   |  |    |
| 38             | WRD & MID | EE, DBD-I                         | PAG(Au)/LAG-I/5/EE-DBD-I/IFCD/2013-14        | 6  |
| 39             |           | Chief Engineer,                   | PAG(Au)/LAG-I/5-14/CE-IFCD/2015-16           | 2  |
| 40             |           | Engineer Assistant,               | PAG(Au)/LAG-I/5-19/EA-MIC/IFCD/15-16         | 4  |
| 41             |           | EE, FCD-III                       | PAG(Au)/LAG-I/5-20/EE-FCD-III/TBL/IFCD/15-16 | 5  |
| 42             |           | EE, Khuga Canal-I                 | PAG(Au)/LAG-I/5-15/EE-KCD-I/15-16            | 5  |
| 43             |           | EE, FCD-I                         | PAG(Au)/LAG-I/5-38/EE-FCD-I/2015-16          | 2  |
| 44             |           | EE, MID-I                         | PAG(Au)/LAG-I/5-37/EE-MID-I/2015-16          | 4  |
| 45             |           | EE, MID-III                       | PAG(Au)/LAG-I/5-49/EE-MID-III/2015-16        | 2  |
| 46             |           | EE, FCD-IV                        | PAG(Au)/LAG-I/5-47/EE-FCD-IV/BPR/15-16       | 4  |
| 47             |           | EE, TPD-I                         | PAG(Au)/LAG-I/5-53/EE-TPD-I/2014-15          | 6  |
| 48             |           | EE, TPD-II                        | PAG(Au)/LAG-I/5-54/EE-TPD-II/2014-15         | 4  |
| 49             |           | EE, Irrigation Maintenance-II     | PAG(Au)/LAG-VI/2-1/IR/EE-IMD-II/2015-16      | 7  |
| <b>2016-17</b> |           |                                   |  |    |
| 50             | PWD       | EE, Ukhrul                        | LAG-V/IR/2-13/EE-Ukl DIV/PWD/2016-17         | 10 |
| 51             |           | EE, Mechanical-I                  | LAG-V/IR/2-14/EE-MDI/PWD/2016-17             | 5  |
| 52             |           | EE, Building-III                  | LAG-V/IR/2-15/EE-BD-III/PWD/2016-17          | 7  |
| 53             |           | EE, Bridge Divn                   |  | 10 |
| 54             | WRD & MID | EE, Irrigation Maintenance-II     | PAG(Au)/LAG-VI/2-1/IR/EE-IMD-II/2015-16      | 7  |
| 55             |           | SE, Flood Management Circle       | PAG(Au)/AMG-II/LAG-VI/1-8/2016-17            | 5  |
| 56             |           | EE, MID-III                       | AG(Au)/LAG-VI/1-20/MID-III/2016-17           | 4  |
| 57             |           | Chief Engineer, IFCD              | PAG(Au)/AMG-II/LAG-VI/IR/CE-IFCD/1-7/2016-17 | 4  |
| 58             |           | EE, Khuga Canal Din-I             | AG(Au)/ES/1-26/EE-KCD-I/CCPUR/2016-17        | 3  |
| 59             |           | EE, FCD-III                       | AG(Au)/ES/1-29/EE-IFCD(TBL)2016-17           | 5  |
| 60             |           | EE, FCD-IV                        | AG(Au)/ES/1-39/EE-FCD-IV/BPR/2016-17         | 4  |
| 61             |           | EE, MID-I                         | PAG(Au)/AMG-II/LAG-VI/EE-MID-                | 3  |
| 62             |           | EE, FCD-I                         | AG(Au)/ES/1-32/EE-FCD-I/IFCD/2016-17         | 6  |
| 63             |           | EE, TPD-II                        | AG(Au)/ES/1-33/EE-TPD-I/IFCD/2016-17         | 11 |
| <b>2017-18</b> |           |                                   |  |    |
| 64             | PWD       | Addl. CE-III                      | AG(Au)/ES/3-51/ACE-III/PWD/2017-18           | 4  |
| 65             |           | Addl. CE-I                        | AG(Au)/ES/3-50/ACE-I/PWD/2017-18             | 4  |
| 66             |           | SE-I                              | AG(Au)/ES/3-55/SE-I/PWD/2017-18              | 7  |
| 67             |           | Addl. CE-II                       | AG(Au)/ES/3-43/ACE-II/2016-17                | 2  |
| 68             |           | Chief Engineer,                   | AG(Au)/ES/3-53/CE-BD/PWD/2017-18             | 3  |

|                |           |                                  |  |           |
|----------------|-----------|----------------------------------|--|-----------|
| 69             |           | EE, Mechanical-II                | AG(Au)/ES/3-68/EE-MID-II/2017-18             | 4         |
| 70             |           | SE-II                            | AG(Au)/ES/3-57/PWD/2017-18                   | 4         |
| 71             |           | EE, Jiribam                      | AG(Au)/ES/3-70/EE-Jiri/PWD/2017-18           | 9         |
| 72             |           | EE, M&QCD                        | AG(Au)/ES/3-69/EE-MQCD/PWD/2017-18           | 6         |
| 73             |           | EE, MD-I                         | AG(Au)/ES/3-70/EE-MD-I/2017-18               | 6         |
| 74             |           | EE, Chandel                      | AG(Au)/ES/3-76/EE-CDL/PWD/2017-18            | 9         |
| 75             |           | SE, Electrical                   | AG(Au)/ES/3-59/SE(Electrical)/pwd/2017-      | 6         |
| 76             |           | EE, Store                        | AG(Au)/ES/3-68/EE/Store/PWD/2017-18          | 6         |
| 77             |           | EE, Tamenglong                   | AG(Au)/ES/3-72/EE-TML/PWD/2017-18            | 10        |
| 78             |           | SE, National Highway Circle      | AG(Au)/ES/3-80/SE-NHC/PWD/2017-18            | 3         |
| 79             |           | EE, NH-III                       | AG(Au)/ES/3-89/EE-NH-III/PWD/2017-18         | 8         |
| 80             |           | EE, Building-I                   | AG(Au)/ES/3-90/EE/BD-I/PWD/2017-18           | 8         |
| 81             |           | EE, Highway South                | AG(Au)/ES/3-77/EE-HSD/PWD/2017-18            | 9         |
| 82             |           | EE, Building-II                  | AG(Au)/ES/3-91/EE-BD-II/PWD/2017-18          | 10        |
| 83             |           | SE-III                           | AG(Au)/ES/3-58/SE-III/PWD/2017-18            | 6         |
| 84             |           | EE, Senapati                     | AG(Au)/ES/3-76/EE-SPT/PWD/2017-18            | 7         |
| 85             |           | EE, Electrical-III               | AG(Au)/ES/3-94/EE/ED-I/PWD/2017-18           | 6         |
| 86             |           | EE, Electical-I                  | AG(Au)/ES/3-93/EE/ED-I/PWD/2017-18           | 7         |
| 87             |           | EE, Building-III                 | AG(Au)/ES/3-106/EE-BD-III/PWD/2017-          | 8         |
| 88             |           | EE, ImphalWest                   | AG(Au)/ES/EE-IW/PWD/2017-18                  | 5         |
| 89             |           | EE, Bridge Divn                  | AG(Au)/ES/3-92/EE-BD/2017-18                 | 8         |
| 90             |           | EE, NEC-II                       | AG(Au)/ES/3-113/EE-NEC-II/PWD/2017-          | 5         |
| 91             |           | EE, NH-III                       | AG(Au)/ES/3-111/EE-NH-III/PWD/2017-          | 9         |
| 92             |           | EE, Sadar Hills                  | AG(Au)/ES/3-115/EE-Sadar                     | 13        |
| 93             |           | EE, Bishnupur                    | AG(Au)/ES/3-114/EE-BPR/PWD/2017-18           | 10        |
| 94             |           | EE, NH-I                         |  | 10        |
| <b>2018-19</b> |           |                                  |  |           |
| 95             | PWD       | EE, NH-II                        | PAG(Au)/ES/3-44/EE, NH Div-                  | 6         |
| 96             |           | PD, EAP                          | PAG(Au)/ES/3-65/PD-EAP/PWD/2018-19           | 11        |
| 97             |           | Chief Engineer                   | PAG(Au)/ES/3-61/CE/PWD/2019-20               | 5         |
| 98             |           | Addl. CE-I                       | PAG(Au)/ES/3-62/Addl.CE-I/2019-20            | 2         |
| 99             |           | Addl. CE-II                      | PAG(Au)/ES/3-62/Addl.CE-II/2019-20           | 3         |
| 100            | WRD & MID | Chief Engineer                   | PAG(Au)/ES/1-33/CE/WRD/2018-19               | 4         |
|                |           | SE FMC                           | PAG(Au)/ES/1-35/SE/FMC/2018-19               | 3         |
|                |           | SE Thoubal Circle-I              | PAG(Au)/ES/1-32/SE/TBL-I/2018-19             | 1         |
|                |           | SE Khuga Project                 | PAG(Au)/ES/1-34/SE-KPC/WRD/2018-19           | 3         |
|                |           | Addl. CE-I                       | PAG(Au)/ES/1-38/Addl. CE-I/WRD/2018-19       | 3         |
|                |           | EE Khuga Spillway & Intake Divn. | PAG(Au)/ES/1-39/EE-Khuga Div/2018-19         | SQ.1<br>3 |
|                |           | Addl. CE-II                      | PAG(Au)/ES/1-40/Addl. CE-II/WRD/2018-19      | 1         |
|                |           | EE FCD-IV                        | PAG(Au)/ES/1-44/EE FC Div-IV/BPR-WRD/2018-19 | 7         |
|                |           | EE MQCD                          | PAG(Au)/ES/1-42/EE-QCMD/WRD/2018-            | 5         |

|                |             |                                    |   |    |
|----------------|-------------|------------------------------------|---|----|
|                |             | CE MID                             | PAG(Au)/ES/1-50/CE-MID /2018-19                 | 3  |
|                |             | EE MID-II                          | PAG(Au)/ES/1-51/EE/MID-II/2018-19               | 6  |
|                |             | EE MID-IV                          | PAG(Au)/ES/1-54/EE-MID-IV/2018-19               | 7  |
|                |             | EE MID-III                         | PAG(Au)/ES/1-53/EE-MID-III/2018-19              | 7  |
|                |             | EE DBD-I                           | PAG(Au)/ES/1-56/EE-DB-Div-I/WRD/2018-19         | 9  |
|                |             | EE Irrigation Maintenance Divn.-II | PAG(Au)/ES/1-55/EE-IM-Div-II/WRD/2018-19        | 11 |
|                |             | EE FCD-I                           | PAG(Au)/ES/1-60/EE-FCD-I/WRD/2018-              | 6  |
|                |             | EE, TPD-IV                         | PAG(Au)/ES/1-59/EE-TPD-IV/WRD/2018-19           | 13 |
|                |             | EE, FCD-II                         | PAG(Au)/ES/1-63/EE-FCD-II/2018-19               | 4  |
|                |             | EE, FCD-III                        | PAG(Au)/ES/1-79/EE. FC & D. Divn-III/2018-19    | 5  |
| <b>2019-20</b> |             |                                    |   |    |
| <b>101</b>     | <b>PWD</b>  | Addl CE-II                         | No.PAG(Au)/ES/3-70/Addl CE-II/PWD/2019-20       | 1  |
|                |             | EE, TPL Divn.                      | No.PAG(Au)/ES/3-85/EE.TPL-Div-PWD/PWD/2019-20   | 3  |
|                |             | SE-II                              | No.PAG(Au)/ES/3-81/SE-II/PWD/2019-20            | 3  |
|                |             | EE, Noney                          | No.PAG(Au)/ES/2-104/EE-NoneyDiv,PWD/2019-20     |    |
|                |             | EE, Pherzawl                       | No.PAG(Au)/ES/3-107/EE-Pherzawl Div.PWD/2019-20 | 6  |
|                |             | EE, Kakching                       |   | 5  |
|                |             | EE, Imphal West                    | No.PAG(Au)/ES/3-114/EE-IW,PWD/2019-20           | 10 |
|                |             | EE, Highway South                  | No. PAG(Au)/ES/3-141/EE Hy.S.Div.PWD/2019-20    | 8  |
|                |             | EE, CCpur                          | No.PAG(Au)/ES/3-81/SE-II/PWD/2019-20            | 6  |
|                |             | EE, NEC-II                         | No.PAG(Au)/ES/3-113/EE-NEC-II/PWD/2019-20       | 6  |
| <b>102</b>     | <b>PHED</b> | EE, WSMD-II                        | No.PAG(AU)/ES/2-76/EE.WSMDivn-I/PHED/2019-20    | 8  |
|                |             | EE, Tengnoupal                     | No.PAG(AU)/ES/2-111/EE.WSM Divn-                | 7  |
|                |             | EE, Store Divn.                    | No.PAG(AU)/ES/2-125/EE.WSM Divn-                | 4  |
|                |             | EE, WSMD-I                         | No.PAG(AU)/ES/2-72/EE.WSM Divn-I/PHED/2019-20   | 8  |
|                |             | EE, Chandel                        | No.PAG(AU)/ES/2-105/EE.WSM Divn-I/PHED/2019-20  | 7  |
|                |             | EE, Drainage & Sewerage Divn.      | No.PAG(AU)/ES/2-75/EE.WSM Divn-I/PHED/2019-20   | 9  |



### Statement 4

#### Details of Inspection Reports outstanding as on 31.3.2020 (Public Works Divisions)

| Year         | Department | No. of Inspection Reports | No. of Paras |
|--------------|------------|---------------------------|--------------|
| 2010-11      | PWD        | 9                         | 36           |
|              | WRD        | 4                         | 11           |
|              | PHED       | 4                         | 11           |
| 2011-12      | PWD        | 5                         | 16           |
|              | WRD        | 5                         | 11           |
|              | PHED       | 4                         | 13           |
| 2012-13      | PWD        | 5                         | 22           |
|              | WRD        | 3                         | 5            |
|              | PHED       | 4                         | 13           |
| 2013-14      | PWD        | 14                        | 74           |
|              | WRD        | 21                        | 97           |
|              | PHED       | 12                        | 79           |
| 2014-15      | PWD        | 19                        | 128          |
|              | WRD        | 15                        | 91           |
|              | PHED       | 11                        | 76           |
| 2015-16      | PWD        | 13                        | 57           |
|              | WRD        | 10                        | 39           |
|              | PHED       | 7                         | 40           |
| 2016-17      | PWD        | 14                        | 92           |
|              | WRD        | 9                         | 45           |
|              | PHED       | 18                        | 139          |
| 2017-18      | PWD        | 38                        | 258          |
|              | WRD        | 0                         | 0            |
|              | PHED       | 0                         | 0            |
| 2018-19      | PWD        | 1                         | 6            |
|              | WRD        | 26                        | 136          |
|              | PHED       | 0                         | 0            |
| 2019-20      | PWD        | 16                        | 70           |
|              | WRD        | 0                         | 0            |
|              | PHED       | 13                        | 78           |
| <b>Total</b> |            | <b>300</b>                | <b>1643</b>  |

**Annexure – A**

Delay in submission of Monthly Accounts for the year 2019-20 in respect of PWD (in days)

| Sl. No. | Name of the Divisions         | Apr-19 | May-19 | Jun-19 | Jul-19 | Aug-19 | Sep-19 | Oct-19 | Nov-19 | Dec-19 | Jan-20 | Feb-20 | Mar-20 | Avg. Delay |
|---------|-------------------------------|--------|--------|--------|--------|--------|--------|--------|--------|--------|--------|--------|--------|------------|
| 1       | E.E. Senapati Division        | 38     | 7      | 9      | 11     | 13     | 7      | 24     | 8      | 3      | 2      | 7      | 56     | 15.42      |
| 2       | E.E.Tamenglong Division       | 12     | 7      | 0      | 0      | 3      | 7      | 8      | 1      | 7      | 11     | 7      | 75     | 11.50      |
| 3       | E.E.Ukhrul Division           | 17     | 0      | 2      | 11     | 9      | 4      | 12     | 1      | 7      | 7      | 0      | 60     | 10.83      |
| 4       | E.E.Chandel Division          | 11     | 7      | 9      | 18     | 3      | 7      | 1      | 8      | 3      | 2      | 50     | 82     | 16.75      |
| 5       | E.E.Churachandpur Division    | 11     | 0      | 0      | 0      | 3      | 25     | 1      | 1      | 3      | 7      | 7      | 82     | 11.67      |
| 6       | E.E.Bishnupur Division        | 11     | 7      | 0      | 11     | 3      | 0      | 8      | 8      | 3      | 11     | 57     | 56     | 14.58      |
| 7       | E.E. Thoubal Division         | 31     | 7      | 9      | 18     | 9      | 0      | 8      | 1      | 7      | 2      | 7      | 80     | 14.92      |
| 8       | E.E. Jiribam Division         | 17     | 0      | 0      | 0      | 3      | 0      | 12     | 1      | 3      | 2      | 0      | 46     | 7.00       |
| 9       | E.E. Imphal East Division     | 38     | 14     | 2      | 11     | 3      | 0      | 8      | 1      | 11     | 11     | 9      | 80     | 15.67      |
| 10      | E.E. Imphal West Division     | 11     | 0      | 0      | 0      | 3      | 0      | 1      | 0      | 3      | 2      | 0      | 39     | 4.92       |
| 11      | E.E. Building Division I      | 11     | 0      | 0      | 0      | 9      | 7      | 18     | 0      | 3      | 2      | 9      | 46     | 8.75       |
| 12      | E.E. Building Division II     | 17     | 7      | 2      | 0      | 9      | 4      | 1      | 0      | 7      | 11     | 57     | 44     | 13.25      |
| 13      | E.E. Building Division III    | 31     | 0      | 2      | 11     | 14     | 4      | 8      | 38     | 7      | 21     | 50     | 35     | 18.42      |
| 14      | E.E. National Highway Div I   | 11     | 0      | 0      | 0      | 13     | 0      | 8      | 1      | 3      | 2      | 0      | 52     | 7.50       |
| 15      | E.E. National Highway Div II  | 45     | 14     | 2      | 11     | 3      | 7      | 1      | 1      | 14     | 11     | 7      | 46     | 13.50      |
| 16      | E.E. National Highway Div III | 11     | 28     | 2      | 0      | 13     | 0      | 8      | 8      | 3      | 2      | 7      | 56     | 11.50      |
| 17      | E.E. Electrical Division I    | 11     | 0      | 2      | 20     | 9      | 25     | 8      | 13     | 12     | 11     | 57     | 46     | 17.83      |
| 18      | E.E. Electrical Div II        | 11     | 7      | 9      | 0      | 3      | 4      | 12     | 8      | 3      | 2      | 7      | 35     | 8.42       |
| 19      | E.E. Electrical Div III       | 11     | 0      | 0      | 0      | 3      | 7      | 8      | 0      | 3      | 7      | 7      | 26     | 6.00       |
| 20      | E.E. Mechanical Div I         | 11     | 0      | 0      | 0      | 3      | 0      | 1      | 8      | 3      | 2      | 0      | 35     | 5.25       |
| 21      | E.E. Mechanical Div II        | 11     | 0      | 0      | 0      | 3      | 4      | 1      | 1      | 3      | 2      | 7      | 39     | 5.92       |

| Sl. No. | Name of the Divisions                   | Apr-19    | May-19    | Jun-19    | Jul-19    | Aug-19    | Sep-19    | Oct-19    | Nov-19    | Dec-19    | Jan-20    | Feb-20    | Mar-20    | Avg. Delay |
|---------|---|-----------|-----------|-----------|-----------|-----------|-----------|-----------|-----------|-----------|-----------|-----------|-----------|------------|
| 22      | E.E. Sadar Hills Division               | 31        | 0         | 9         | 11        | 16        | 0         | 8         | 1         | 3         | 11        | 66        | 82        | 19.83      |
| 23      | E.E. Bridge Division                    | 38        | 14        | 9         | 16        | 14        | 4         | 12        | 8         | 12        | 7         | 50        | 39        | 18.58      |
| 24      | E.E. Store Division                     | 11        | 7         | 9         | 0         | 16        | 0         | 8         | 1         | 7         | 2         | 0         | 52        | 9.42       |
| 25      | E.E. Highway South Division             | 11        | 0         | 0         | 0         | 9         | 0         | 12        | 1         | 12        | 21        | 7         | 68        | 11.75      |
| 26      | E.E. Monitoring & Quality Control Div   | 11        | 7         | 9         | 11        | 9         | 7         | 1         | 1         | 3         | 2         | 7         | 35        | 8.58       |
| 27      | E.E. North Eastern Council Div. II      | 17        | 0         | 9         | 32        | 13        | 25        | 12        | 8         | 7         | 7         | 50        | 39        | 18.25      |
| 28      | Project Director (EAP)                  | 17        | 14        | 0         | 18        | 3         | 25        | 8         | 8         | 14        | 7         | 50        | 26        | 15.83      |
| 29      | E.E. Kamjong Division                   | 11        | 7         | 0         | 0         | 3         | 0         | 1         | 0         | 3         | 2         | 0         | 35        | 5.17       |
| 30      | E.E. Pherzawl Division                  | 11        | 0         | 0         | 0         | 3         | 0         | 1         | 0         | 7         | 2         | 50        | 52        | 10.50      |
| 31      | E.E. Tengenupal Division                | 11        | 0         | 2         | 18        | 3         | 7         | 1         | 1         | 7         | 2         | 0         | 52        | 8.67       |
| 32      | E.E. Kakching Division                  | 11        | 0         | 2         | 0         | 3         | 7         | 18        | 8         | 12        | 2         | 7         | 66        | 11.33      |
| 33      | E.E. Noney Division                     | 11        | 28        | 0         | 11        | 3         | 4         | 18        | 13        | 3         | 7         | 50        | 56        | 17.00      |
|         | <b>No. of Accounts received in time</b> | <b>0</b>  | <b>16</b> | <b>15</b> | <b>17</b> | <b>0</b>  | <b>13</b> | <b>0</b>  | <b>6</b>  | <b>0</b>  | <b>0</b>  | <b>8</b>  | <b>0</b>  | <b>75</b>  |
|         | <b>No. of Accounts delayed</b>          | <b>33</b> | <b>17</b> | <b>18</b> | <b>16</b> | <b>33</b> | <b>20</b> | <b>33</b> | <b>27</b> | <b>33</b> | <b>33</b> | <b>25</b> | <b>33</b> | <b>321</b> |

**Annexure – B**

**Delay in submission of Monthly Accounts for the year 2019-20 in respect of PHED (in days)**

| <b>Sl. No.</b> | <b>Name of the Divisions</b>        | <b>Apr-19</b> | <b>May-19</b> | <b>Jun-19</b> | <b>Jul-19</b> | <b>Aug-19</b> | <b>Sep-19</b> | <b>Oct-19</b> | <b>Nov-19</b> | <b>Dec-19</b> | <b>Jan-20</b> | <b>Feb-20</b> | <b>Mar-20</b> | <b>Avg. Delay</b> |
|----------------|-------------------------------------|---------------|---------------|---------------|---------------|---------------|---------------|---------------|---------------|---------------|---------------|---------------|---------------|-------------------|
| <b>1</b>       | E.E. Thoubal Division               | 0             | 0             | 0             | 19            | 7             | 0             | 4             | 1             | 0             | 17            | 0             | 39            | <b>7.25</b>       |
| <b>2</b>       | E.E. Bishnupur Division             | 0             | 0             | 0             | 0             | 0             | 0             | 1             | 1             | 0             | 9             | 8             | 28            | <b>3.92</b>       |
| <b>3</b>       | E.E. Churachandpur Division         | 21            | 14            | 0             | 10            | 1             | 0             | 1             | 3             | 0             | 8             | 44            | 40            | <b>11.83</b>      |
| <b>4</b>       | E.E. Ukhrul Division                | 0             | 0             | 0             | 4             | 3             | 0             | 0             | 7             | 0             | 17            | 0             | 18            | <b>4.08</b>       |
| <b>5</b>       | E.E. Tamenglong Division            | 10            | 0             | 0             | 9             | 6             | 66            | 13            | 13            | 4             | 9             | 10            | 42            | <b>14.33</b>      |
| <b>6</b>       | E.E. Senapati Division              | 20            | 2             | 16            | 17            | 0             | 26            | 11            | 23            | 14            | 13            | 47            | 25            | <b>17.83</b>      |
| <b>7</b>       | E.E. Chandel Division               | 3             | 0             | 7             | 0             | 7             | 0             | 0             | 3             | 0             | 0             | 9             | 20            | <b>4.08</b>       |
| <b>8</b>       | E.E. Imphal East Division           | 10            | 21            | 9             | 16            | 9             | 7             | 12            | 17            | 5             | 31            | 42            | 47            | <b>18.83</b>      |
| <b>9</b>       | E.E. Imphal West Division           | 0             | 0             | 0             | 19            | 2             | 26            | 3             | 0             | 4             | 43            | 13            | 39            | <b>12.42</b>      |
| <b>10</b>      | E.E. W/S Maintenance Division I     | 20            | 2             | 19            | 9             | 2             | 0             | 0             | 17            | 7             | 0             | 0             | 26            | <b>8.50</b>       |
| <b>11</b>      | E.E. W/S Project Construction Div.  | 0             | 0             | 0             | 10            | 1             | 0             | 4             | 6             | 3             | 9             | 6             | 10            | <b>7.17</b>       |
| <b>12</b>      | E.E. Inves. Plg. & Design Div.      | 0             | 3             | 6             | 10            | 2             | 4             | 10            | 14            | 10            | 17            | 8             | 13            | <b>4.33</b>       |
| <b>13</b>      | E.E. Mechanical and Electrical Div. | 10            | 0             | 0             | 0             | 13            | 0             | 0             | 13            | 4             | 0             | 0             | 34            | <b>9.83</b>       |
| <b>14</b>      | E.E. W/S Store Division             | 4             | 0             | 0             | 0             | 0             | 0             | 0             | 0             | 0             | 0             | 0             | 14            | <b>4.50</b>       |
| <b>15</b>      | E.E. W/S Drainage & Sewerage Div.   | 11            | 0             | 15            | 10            | 0             | 0             | 50            | 30            | 23            | 0             | 47            | 18            | <b>1.83</b>       |
| <b>16</b>      | E.E. W/S Maintenance Division II    | 0             | 0             | 6             | 24            | 1             | 27            | 8             | 1             | 3             | 3             | 9             | 41            | <b>18.92</b>      |
| <b>17</b>      | E.E. Monitoring and Evaluation Div. | 5             | 0             | 8             | 10            | 0             | 0             | 0             | 0             | 3             | 25            | 8             | 19            | <b>8.42</b>       |
| <b>18</b>      | E.E. Kangpokpi Division             | 33            | 3             | 8             | 19            | 0             | 0             | 29            | 7             | 7             | 17            | 13            | 24            | <b>6.92</b>       |

| Sl. No. | Name of the Divisions                    | Apr-19    | May-19    | Jun-19    | Jul-19    | Aug-19    | Sep-19    | Oct-19    | Nov-19    | Dec-19    | Jan-20    | Feb-20    | Mar-20    | Avg. Delay |
|---------|--|-----------|-----------|-----------|-----------|-----------|-----------|-----------|-----------|-----------|-----------|-----------|-----------|------------|
| 19      | E.E. Jiribam Division                    | 20        | 2         | 19        | 9         | 2         | 0         | 0         | 17        | 7         | 0         | 0         | 38        | 14.83      |
| 20      | E.E. Tegnoupal Division                  | 0         | 0         | 0         | 10        | 1         | 0         | 4         | 6         | 3         | 9         | 6         | 18        | 13.17      |
| 21      | E.E. Pherzawl Division                   | 0         | 0         | 0         | 4         | 3         | 0         | 0         | 7         | 0         | 17        | 0         | 18        | 4.08       |
| 22      | E.E. Kakching Division                   | 0         | 0         | 0         | 0         | 10        | 0         | 0         | 0         | 0         | 1         | 0         | 25        | 4.08       |
| 23      | E.E. Kamjong Division                    | 0         | 0         | 8         | 17        | 1         | 6         | 8         | 23        | 0         | 33        | 42        | 40        | 13.58      |
| 24      | E.E. Noney Division                      | 10        | 1         | 6         | 19        | 7         | 0         | 12        | 13        | 11        | 37        | 43        | 46        | 16.58      |
| 25      | E.E. CCDU                                | 18        | 18        | 7         | 0         | 13        | 4         | 3         | 13        | 5         | 37        | 7         | 26        | 14.25      |
|         | <b>No. of Accounts received in time</b>  | <b>10</b> | <b>17</b> | <b>12</b> | <b>7</b>  | <b>7</b>  | <b>16</b> | <b>8</b>  | <b>4</b>  | <b>10</b> | <b>6</b>  | <b>8</b>  | <b>0</b>  | <b>105</b> |
|         | <b>No. of Accounts received in delay</b> | <b>15</b> | <b>8</b>  | <b>13</b> | <b>18</b> | <b>18</b> | <b>9</b>  | <b>17</b> | <b>21</b> | <b>15</b> | <b>19</b> | <b>17</b> | <b>25</b> | <b>195</b> |

### Annexure – C

Delay in submission of Monthly Accounts for the year 2019-20 in respect of WRD (in days)

| Sl. No. | Name of the Divisions                    | Apr-19    | May-19    | Jun-19    | Jul-19    | Aug-19    | Sep-19    | Oct-19    | Nov-19    | Dec-19    | Jan-20    | Feb-20    | Mar-20    | Avg. Delay |
|---------|--|-----------|-----------|-----------|-----------|-----------|-----------|-----------|-----------|-----------|-----------|-----------|-----------|------------|
| 1       | E.E. Dolaithabi Barrage Construction-I   | 59        | 29        | 21        | 20        | 9         | 38        | 3         | 13        | 3         | 1         | 64        | 42        | 25.42      |
| 2       | E.E. Dolaithabi Barrage Construction-II  | 7         | 3         | 0         | 0         | 1         | 0         | 3         | 1         | 4         | 1         | 0         | 25        | 3.75       |
| 3       | E.E. Thoubal Project Division-I          | 24        | 29        | 26        | 16        | 9         | 1         | 3         | 1         | 4         | 0         | 55        | 26        | 16.17      |
| 4       | E.E. Thoubal Project Division-II         | 24        | 0         | 21        | 0         | 1         | 0         | 15        | 17        | 3         | 82        | 52        | 22        | 19.75      |
| 5       | E.E. Thoubal Project Division-IV         | 59        | 29        | 50        | 20        | 14        | 45        | 15        | 75        | 45        | 102       | 82        | 52        | 49.00      |
| 6       | E.E. Task Force Division                 | 47        | 17        | 21        | 19        | 1         | 6         | 8         | 20        | 19        | 38        | 55        | 58        | 25.75      |
| 7       | E.E. Thoubal Project Division-VI         | 17        | 29        | 0         | 0         | 1         | 6         | 8         | 17        | 10        | 40        | 10        | 52        | 15.83      |
| 8       | E.E. Project Store Division              | 17        | 8         | 21        | 12        | 9         | 0         | 5         | 10        | 13        | 14        | 7         | 60        | 14.67      |
| 9       | E.E. Electrical & Mechanical Division    | 54        | 33        | 62        | 47        | 17        | 48        | 18        | 35        | 65        | 35        | 7         | 58        | 44.08      |
| 10      | E.E. Flood Control and Drainage Div-I    | 52        | 21        | 19        | 6         | 17        | 34        | 91        | 78        | 48        | 78        | 48        | 32        | 43.67      |
| 11      | E.E. Flood Control and Drainage Div-II   | 32        | 59        | 29        | 0         | 13        | 30        | 40        | 10        | 23        | 15        | 64        | 79        | 32.83      |
| 12      | E.E. Flood Control and Drainage Div-III  | 17        | 10        | 6         | 20        | 10        | 15        | 23        | 0         | 19        | 2         | 7         | 58        | 15.58      |
| 13      | E.E. Flood Control and Drainage Div-IV   | 32        | 23        | 22        | 20        | 13        | 11        | 8         | 10        | 14        | 2         | 50        | 58        | 21.92      |
| 14      | E.E. Khuga Head Works                    | 6         | 8         | 0         | 19        | 9         | 0         | 3         | 1         | 68        | 38        | 8         | 59        | 18.25      |
| 15      | E.E. Khuga Canal Division-I              | 6         | 6         | 21        | 0         | 0         | 0         | 8         | 0         | 3         | 10        | 3         | 37        | 7.83       |
| 16      | E.E. Khuga Canal Division-II             | 88        | 57        | 27        | 20        | 13        | 13        | 8         | 41        | 11        | 116       | 86        | 56        | 44.67      |
| 17      | E.E. Khuga Spillway and Intake Div.      | 6         | 14        | 0         | 0         | 0         | 0         | 0         | 1         | 7         | 3         | 55        | 37        | 10.25      |
| 18      | E.E. Quality Control and Monitoring Div  | 17        | 8         | 8         | 6         | 0         | 0         | 5         | 40        | 10        | 37        | 55        | 56        | 20.17      |
| 19      | E.E. Irrigation Investigation Division   | 6         | 29        | 0         | 12        | 1         | 6         | 3         | 1         | 3         | 1         | 55        | 26        | 11.92      |
| 20      | E.E. Irrigation Maintenance Division-II  | 16        | 14        | 21        | 12        | 1         | 24        | 8         | 13        | 10        | 10        | 55        | 74        | 21.50      |
|         | <b>No. of Accounts received in time</b>  | <b>0</b>  | <b>1</b>  | <b>5</b>  | <b>6</b>  | <b>3</b>  | <b>7</b>  | <b>1</b>  | <b>2</b>  | <b>0</b>  | <b>1</b>  | <b>1</b>  | <b>0</b>  | <b>27</b>  |
|         | <b>No. of Accounts received in delay</b> | <b>20</b> | <b>19</b> | <b>15</b> | <b>14</b> | <b>17</b> | <b>13</b> | <b>19</b> | <b>18</b> | <b>20</b> | <b>19</b> | <b>19</b> | <b>20</b> | <b>213</b> |

**Annexure – D**

Delay in submission of Monthly Accounts for the year 2019-20 in respect of MID (in days)

| Sl. No. | Name of the Divisions                    | Apr-19   | May-19   | Jun-19   | Jul-19   | Aug-19   | Sep-19   | Oct-19   | Nov-19   | Dec-19   | Jan-20   | Feb-20   | Mar-20   | Avg. Delay |
|---------|--|----------|----------|----------|----------|----------|----------|----------|----------|----------|----------|----------|----------|------------|
| 1       | E.E. Minor Irrigation Div.-I             | 17       | 0        | 35       | 4        | 0        | 0        | 0        | 9        | 10       | 7        | 48       | 58       | 15.67      |
| 2       | E.E. Minor Irrigation Div.-II            | 13       | 11       | 27       | 20       | 0        | 0        | 0        | 9        | 10       | 10       | 48       | 67       | 17.92      |
| 3       | E.E. Minor Irrigation Div.-III           | 13       | 0        | 35       | 4        | 0        | 0        | 0        | 9        | 10       | 10       | 48       | 66       | 16.25      |
| 4       | E.E. Minor Irrigation Div.-IV            | 10       | 11       | 35       | 4        | 0        | 0        | 0        | 9        | 10       | 10       | 48       | 58       | 16.25      |
| 5       | E.E. Engineering Assistant Div.          | 4        | 0        | 37       | 4        | 0        | 0        | 0        | 9        | 10       | 10       | 48       | 58       | 15.00      |
|         | <b>No. of Accounts received in time</b>  | <b>0</b> | <b>3</b> | <b>0</b> | <b>0</b> | <b>5</b> | <b>5</b> | <b>5</b> | <b>0</b> | <b>0</b> | <b>0</b> | <b>0</b> | <b>0</b> | <b>18</b>  |
|         | <b>No. of Accounts received in delay</b> | <b>5</b> | <b>2</b> | <b>5</b> | <b>5</b> | <b>0</b> | <b>0</b> | <b>0</b> | <b>5</b> | <b>5</b> | <b>5</b> | <b>5</b> | <b>5</b> | <b>42</b>  |

## Annexure E

| <b>FORM 51</b>  |            |
|---|------------|
| <b>SCHEDULE OF MONTHLY RECONCILIATION<br/>WITH .....BRANCH OF<br/>.....BANK<br/>FOR THE MONTH .....</b> |            |
| <b>Part – I Cash Remitted and acknowledged</b>  |            |
|   | Bank (Rs.) |
| 1. Opening balance brought over as per line 5 of last month's memo                                      |            |
| 2. Cash etc. remitted during the month  |            |
| 3. TOTAL  |            |
| 4. Amounts acknowledged by Bank as per monthly statement (Receipt Scrolls)                              |            |
| 5. Difference (line 3 minus 4) as explained below. Closing Balance                                      |            |

| <b>PART – II – Cheques Issued And Paid</b>                             |            |
|--|------------|
|  | Bank (Rs.) |
| 1. Opening balance brought over as per line 5 of previous month's memo |            |
| 2. Cheques issued during the month                                     |            |
| 3. TOTAL   |            |
| 4. Cheques cashed as per bank's Payment Scroll.                        |            |
| 5. Difference (line 3 minus 4) as detailed below Closing Balance       |            |

| Analysis of the closing balance as per line 5<br><b>Details of Closing Balance (Part – I)</b> |                                |                         |            |                                     |
|---|--------------------------------|-------------------------|------------|-------------------------------------|
|   | Date on which remitted to bank | No. and date of challan | Amount Rs. | Reasons for the outstanding balance |
|   |                                |                         |            |                                     |
|   |                                |                         |            |                                     |

| <b>Details of Closing Balance (Part – II)</b> |        |  |                        |  |        |                        |  |        |
|---|--------|--|------------------------|--|--------|------------------------|--|--------|
| PARTICULARS OF CHEQUES                        |        | Amount   | PARTICULARS OF CHEQUES |  | Amount | PARTICULARS OF CHEQUES |  | Amount |
| Uncashed                                      | Cheque | Total<br>Uncashed<br>Cheque  |                        |  |        |                        |  |        |
|   |        | <i>Deduct—</i><br>Total of<br>cashed<br>Cheques<br>as per last<br>column |                        |  |        |                        |  |        |
|   |        | Net<br>difference  |                        |  |        |                        |  |        |